

homematic 

homematic IP
HmIP-HCU1 Home
Control Unit



homematic IP HmIP-HCU1 Home Control Unit Instruction Manual

[Home](#) » [Homematic IP](#) » homematic IP HmIP-HCU1 Home Control Unit Instruction Manual 

Contents

- [1 homematic IP HmIP-HCU1 Home Control Unit](#)
- [2 Product Information](#)
- [3 Package contents](#)
- [4 Hazard information](#)
- [5 Function and device overview](#)
- [6 Installation](#)
- [7 Start-up](#)
- [8 Troubleshooting](#)
- [9 Status LEDs](#)
- [10 Restoring factory settings](#)
- [11 Technical specifications](#)
- [12 Documents / Resources](#)
 - [12.1 References](#)
- [13 Related Posts](#)

homematic 

homematic IP HmIP-HCU1 Home Control Unit



Specifications

- Product Name: Home Control Unit
- Model Numbers: HmIP-HCU1, HmIP-HCU1-A
- Languages: DE, EN, FR, ES, IT, NL

Product Information

The Home Control Unit is a smart home control device that allows users to manage and control various smart home devices.

Installation and Setup

Mounting

During installation, ensure that the Home Control Unit is placed at least 50 cm away from the router for LAN installation.

LAN Installation

For LAN installation, connect the Home Control Unit to the router using a network cable.

Wi-Fi Installation

For Wi-Fi installation, follow the instructions provided in the manual for wireless setup.

Getting Started

1. **Home Control Unit Setup:** Follow the steps outlined in section 7.1 of the manual to set up the Home Control Unit.

2. **LAN Initialization:** Refer to section 7.2 for instructions on initializing the LAN connection.
3. **Wi-Fi Initialization:** Section 7.3 provides details on setting up Wi-Fi connection.
4. **HCUweb:** Explore features and functionalities using HCUweb as described in section 7.4.
5. **Operation and Configuration:** Learn how to operate and configure the device in section 7.6.

FAQ

1. Q: Can I control multiple smart home devices with the Home Control Unit?

A: Yes, the Home Control Unit allows you to manage and control various smart home devices within your home.

2. Q: Where can I find technical support or updates for the Home Control Unit?

A: You can find technical documents and updates on the official website at www.homematic-ip.com.

Documentation © 2024 eQ-3 AG, Germany

All rights reserved. Translation from the original version in German. This manual may not be reproduced in any format, either in whole or in part, nor may it be duplicated or edited by electronic, mechanical or chemical means, without the written consent of the publisher. Typographical and printing errors cannot be excluded. However, the information contained in this manual is reviewed on a regular basis and any necessary corrections will be implemented in the next edition. We accept no liability for technical or typographical errors or the consequences thereof. All trademarks and industrial property rights are acknowledged. Changes in line with technical progress may be made without prior notice.

160336 (web) | Version 1.0 (08/2024)

Package contents

- 1x Homematic
- IP Home Control Unit
- 1x Wall mount
- 1x USB stick
- 1x Plug-in mains adapter
- 1x Network cable
- 3x Screws
- 2x Plugs
- 1x Operating manual

Information about this manual

Please read this manual carefully before operating your Homematic IP components. Keep the manual so you can refer to it at a later date if you need to. If you hand over the device to other persons for use, please hand over this manual as well.

Symbols used:



- **Important!** This indicates a hazard.



- **Note.** This section contains important additional information!

Hazard information

- We do not assume any liability for damage to property or personal injury caused by improper use or the failure to observe the hazard information. In such cases, all warranty claims are void. We accept no liability for any consequential damage.
- Do not use the device if there are signs of damage to the housing, control elements or connecting sockets, for example, or if it demonstrates a malfunction. If you have any doubts, please have the device checked by an expert.
- Do not open the device. It does not contain any parts that need to be maintained by the user. In the event of an error, please have the device checked by an expert.
- For safety and licensing reasons (CE), unauthorised changes and/or modifications to the device are not permitted.
- The device may only be operated indoors and must be protected from the effects of moisture, vibrations, solar or other methods of heat radiation, cold and mechanical loads.
- The device is not a toy: do not allow children to play with it. Do not leave packaging material lying around. Plastic films/bags, pieces of polystyrene, etc., can be dangerous in the hands of a child.
- For the power supply, only use the original power supply unit (5.1 VDC/2600 mA) delivered with the device.
- The device may only be connected to an easily accessible power socket outlet. The mains plug must be pulled out if a hazard occurs.
- When selecting the installation location, check for electrical wires and power supply cables.
- Always lay cables in such a way that they do not become a risk to people and domestic animals.
- The device is only suitable for use in residential environments.
- Using the device for any purpose other than that described in this operating manual does not fall within the scope of intended use and will invalidate any warranty or liability.

Homematic IP – smart living, simply comfortable

With Homematic IP, you can install your smart home solution in just a few steps. The Homematic IP Home Control Unit is the central element of the Homematic IP smart home system and communicates using the Homematic IP radio protocol. All devices of the Homematic IP system can be set up and controlled conveniently and individually with a smartphone or tablet using the Homematic IP app. For experts, configuration over a web user interface (HCUweb) is also possible. The range of functions in your system varies, depending on the type of components installed. For further information, please refer to the Homematic IP user guide. All current technical documents and updates can be found at www.homematic-ip.com.

Function and device overview


The Smart Home central control unit for everyone: from first-time Smart-Homers to professionals – the Homematic IP Home Control Unit connects all the devices in the Smart Home and enables convenient control using the app, either over the cloud or locally. The futureproof central control unit is the ideal solution for customised energy management, local data storage, measurement data logging and flexible extension options.


Device overview:

- (A) System button (top LED)
- (B) Status LEDs

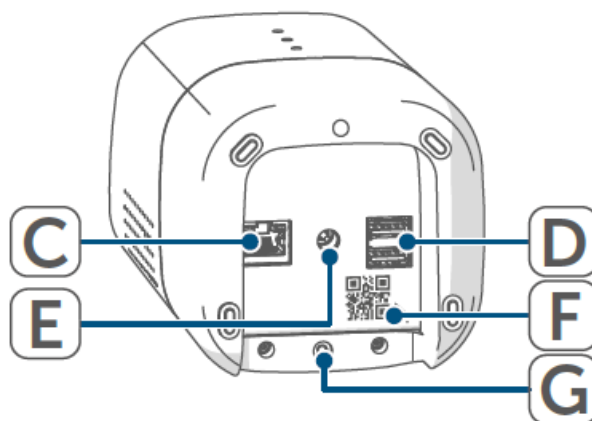
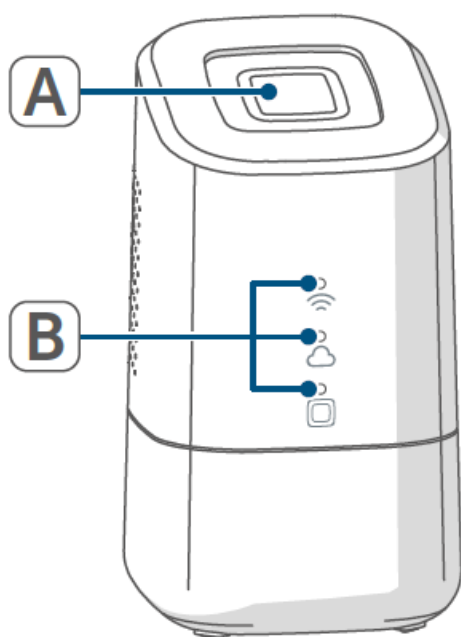


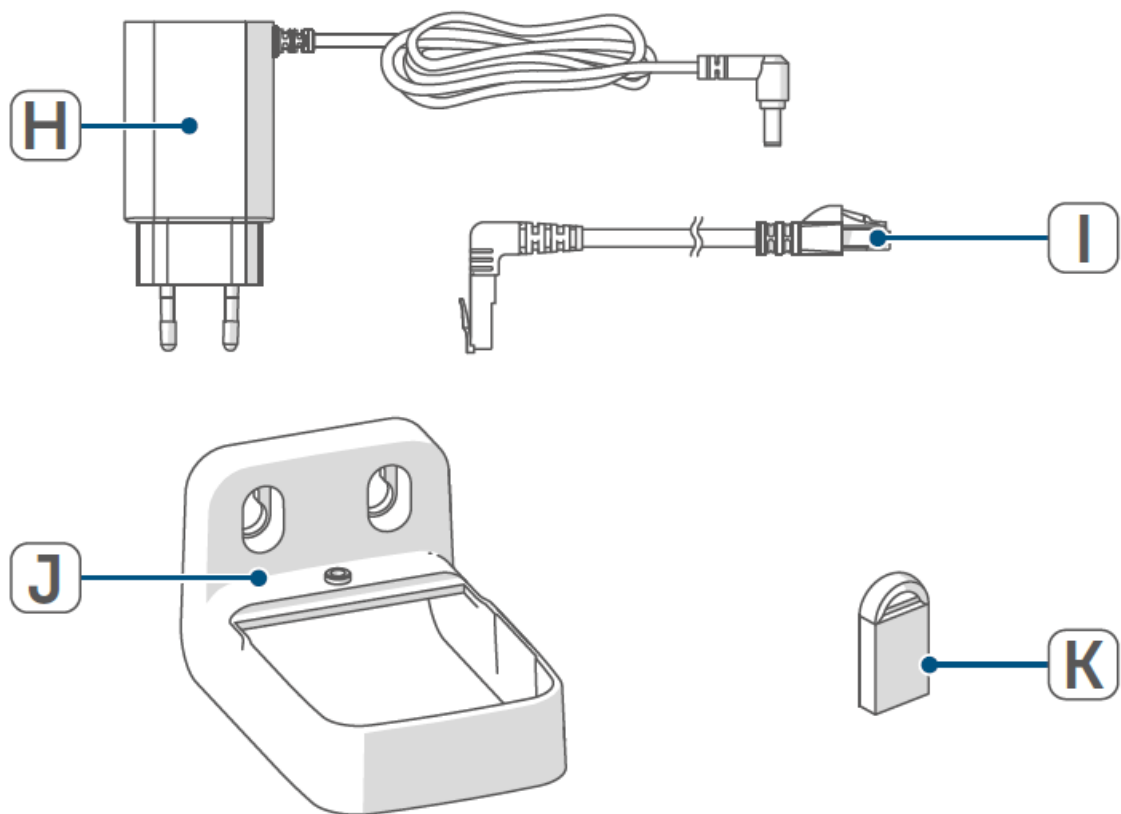
Internet available

 Cloud access available

 Homematic IP function

- (C) Interface: Network cable
- (D) Interface: USB
- (E) Interface: Plug-in mains adapter
- (F) QR code and device number (SGTIN)
- (G) Bore holes for wall mount
- (H) Plug-in mains adapter
- (I) Network cable
- (J) Wall mount
- (K) USB stick





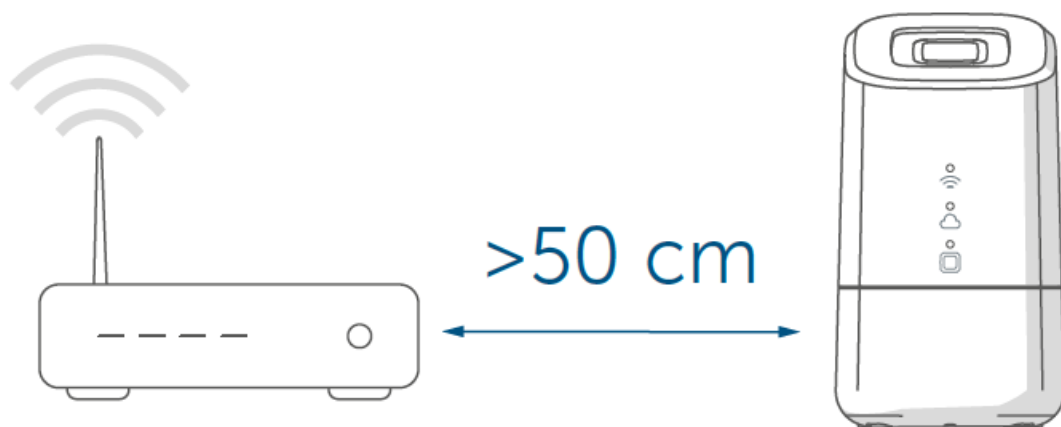
Installation

Please choose your desired mounting location or set-up location before starting up the device. Depending on the preferred installation (LAN or WiFi), there are different requirements, which are described below.

- You can set up the Home Control Unit free-standing or mount it using the supplied wall mount.
- During LAN installation, the Home Control Unit is connected to the router via a network cable.
- During WiFi installation, the Home Control Unit is connected to the router via WiFi.

LAN installation

- If LAN installation is preferred, a socket outlet for the power supply and the LAN connection to the router must be available at the installation location.
- Make sure that the Home Control Unit is installed or mounted 50 cm away from the router if a LAN installation is preferred.



WiFi installation

- If WiFi installation is preferred, a power socket and sufficient WiFi reception must be available at the installation location.
- Make sure that the Home Control Unit is installed or mounted >1 m away from the router if a WiFi installation is preferred.

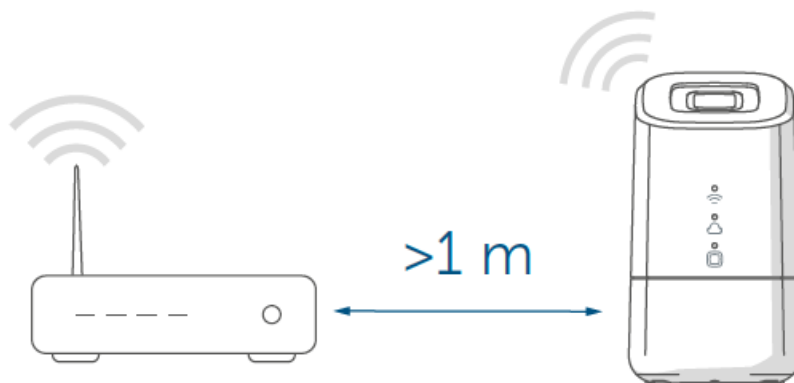


Figure 3

- A Installation (without wall mount)
- B Installation with wall mount

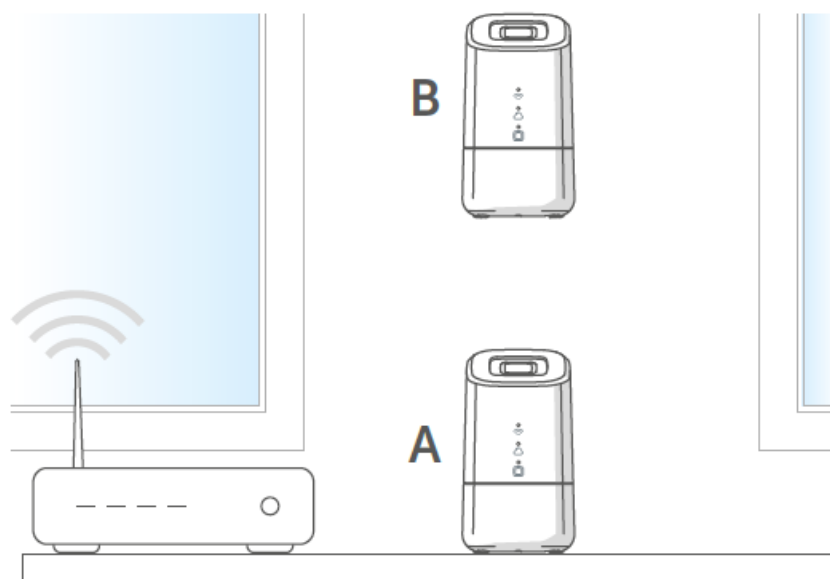


Figure 4

Follow the steps below to install the wall mount.

- Mark the drill holes at a distance of 30 mm and drill the holes for the dowels supplied.

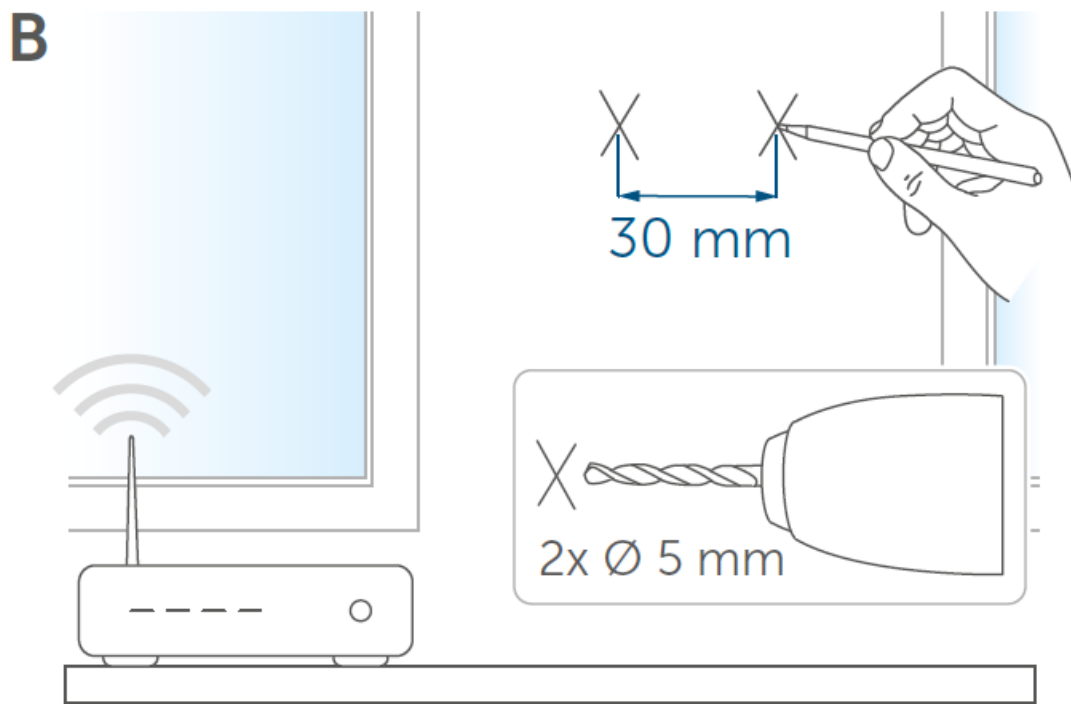


Figure 5

- Mount the wall mount.

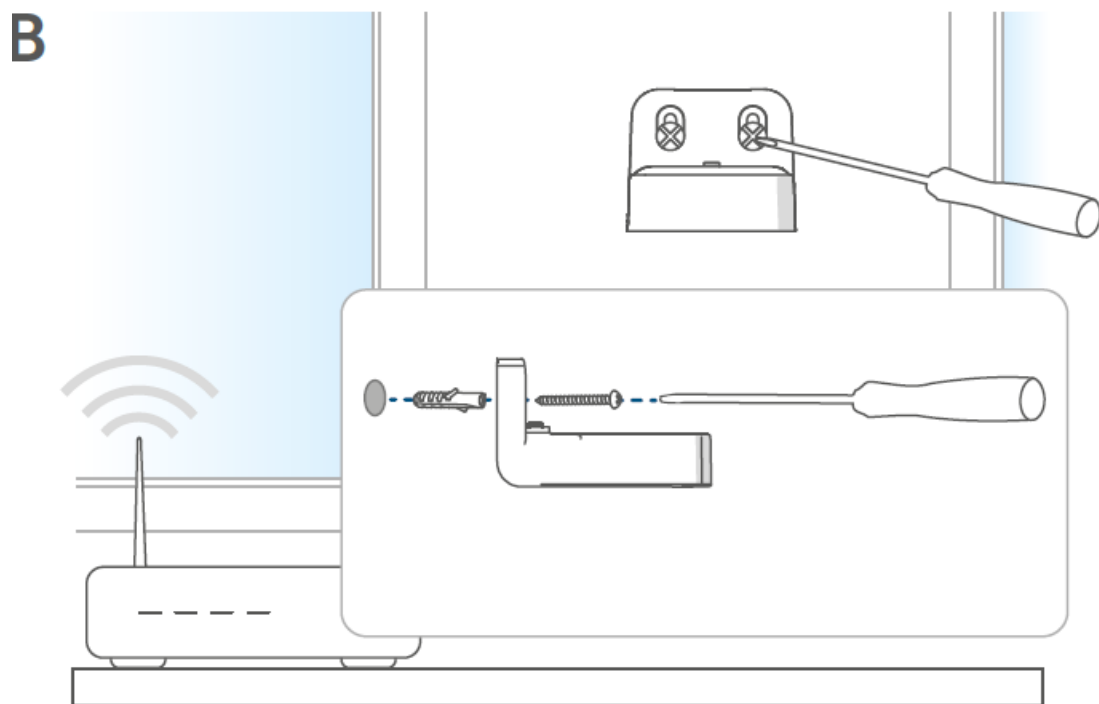


Figure 6

- Screw the wall mount to the Home Control Unit.

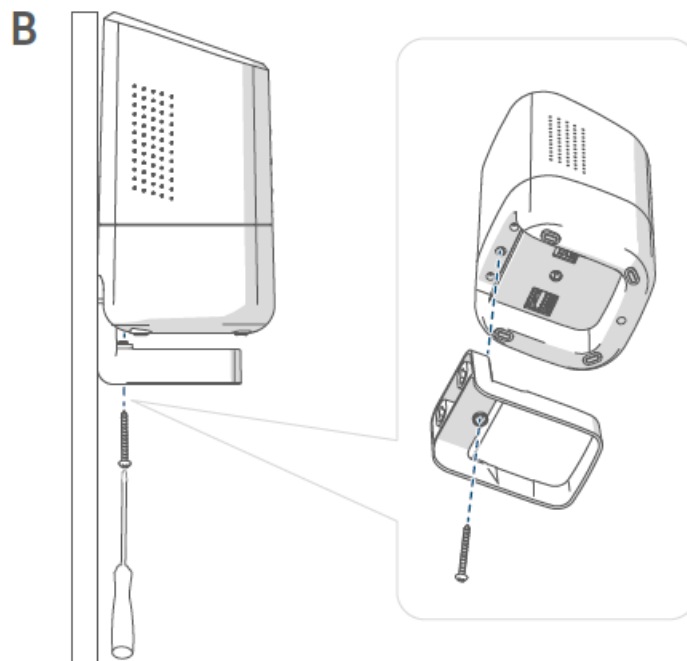


Figure 7

Start-up

This chapter describes how to set up your Homematic IP system step by step. First install the Homematic IP app on your end device and set up your Home Control Unit as described in the following section. Once your Home Control Unit has been set up successfully, you can add and integrate new Homematic IP devices to your system.

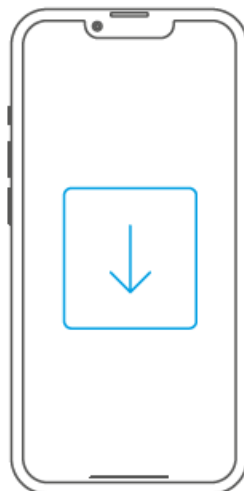
Setting up the Home Control Unit

The Homematic IP app is available for iOS and Android and can be downloaded for free from the Apple App Store and the Google Play store.

- Please download the Homematic IP app from the Apple App Store or the Google Play store and install it on your end device.



iOS



Android

Figure 8

- Start the app.
- Scan the QR code (F) on the underside of the Home Control Unit or on the enclosed sticker. Alternatively, you

can enter the device number (SGTIN) of the Home Control Unit manually in the app.

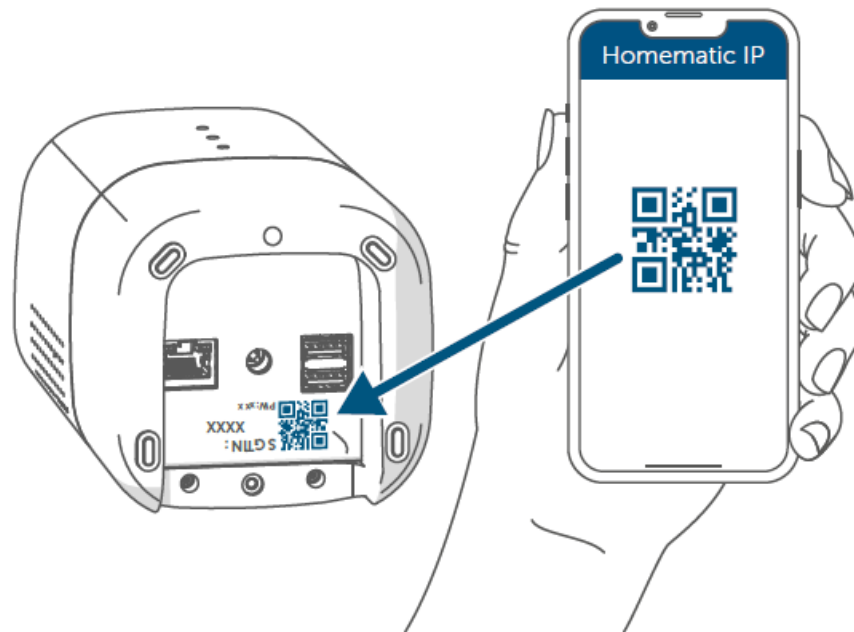


Figure 9

- Follow the installation steps in the Homematic IP app.

LAN start-up

The Home Control Unit is initially only searched for in the home network. If the end device to be registered is not in the same network as the Home Control Unit, you must first press the system button (the top LED lights up purple). Follow the instructions in the pairing wizard. For safety reasons, the authorisation is valid for 5 minutes at a time.

- Select LAN start-up during the installation process.



Figure 10

- Connect the Home Control Unit with the router using the supplied network cable (I). Provide power supply for

the device using the supplied plug-in mains adapter (H).

Ensure that the USB stick is inserted.

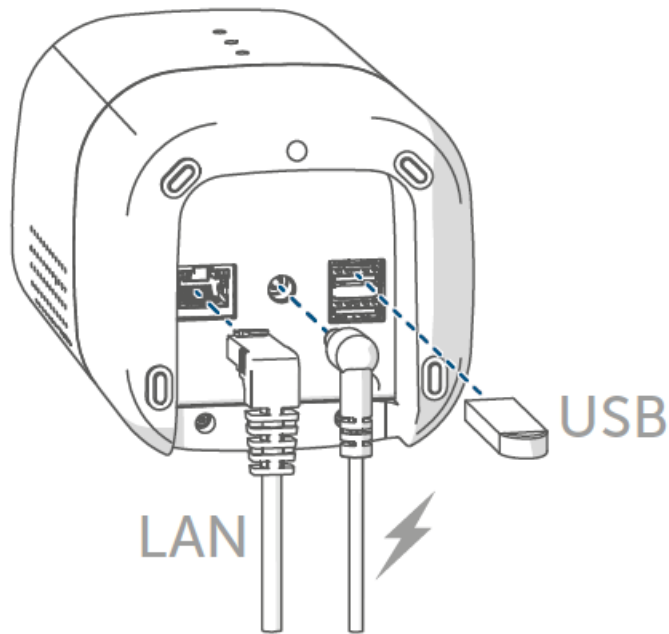


Figure 11

- Wait until the top LED of your Home Control Unit is switched off.

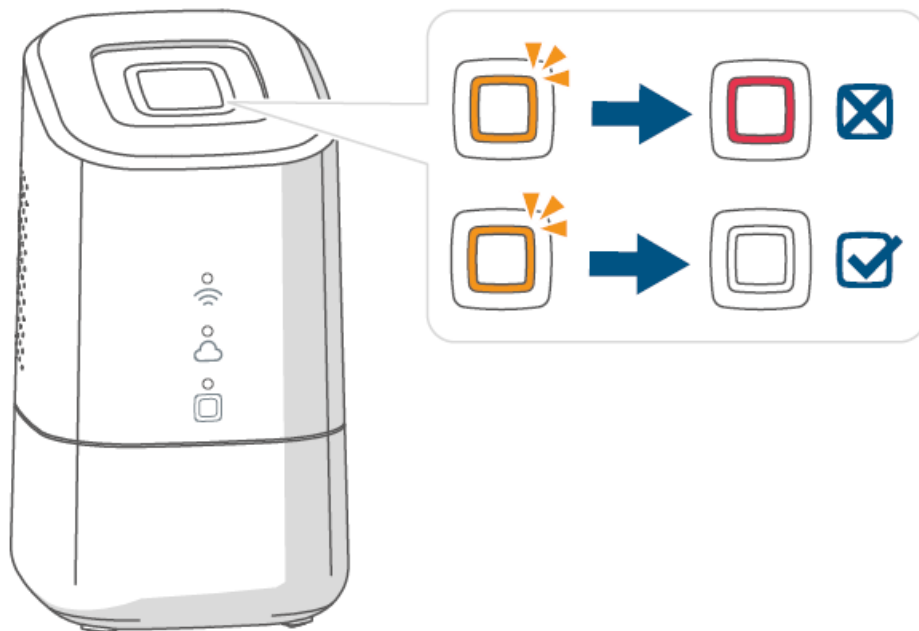


Figure 12

If the top LED lights up differently see „8.3 Error codes and flashing sequences“ on page 29 or follow the instructions in the app.

- Wait until all three status LEDs on your Home Control Unit light up blue continuously.

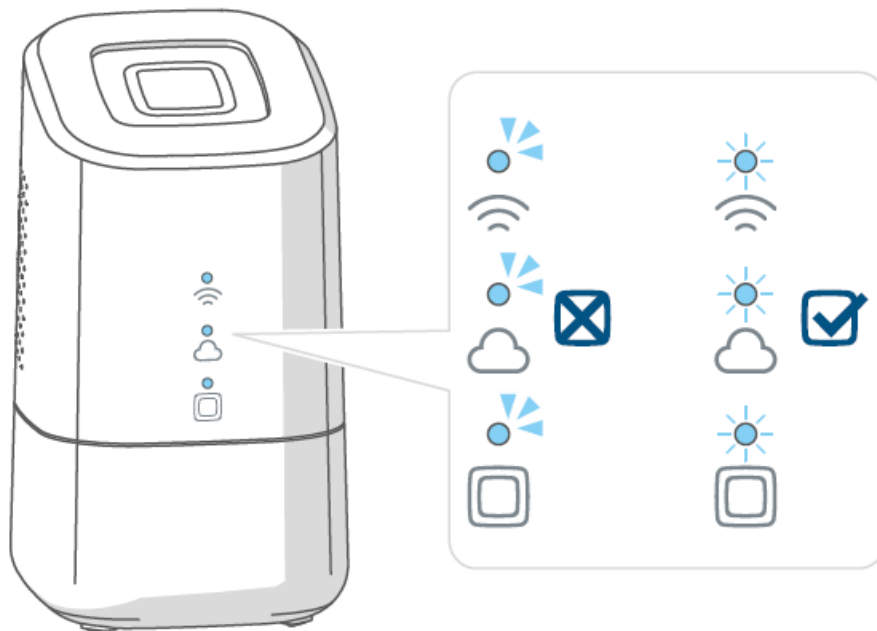


Figure 13

If the top LED lights up differently see „8.3 Error codes and flashing sequences“ on page 29 or follow the instructions in the app.

- Confirm the installation procedure by pressing the system button once.

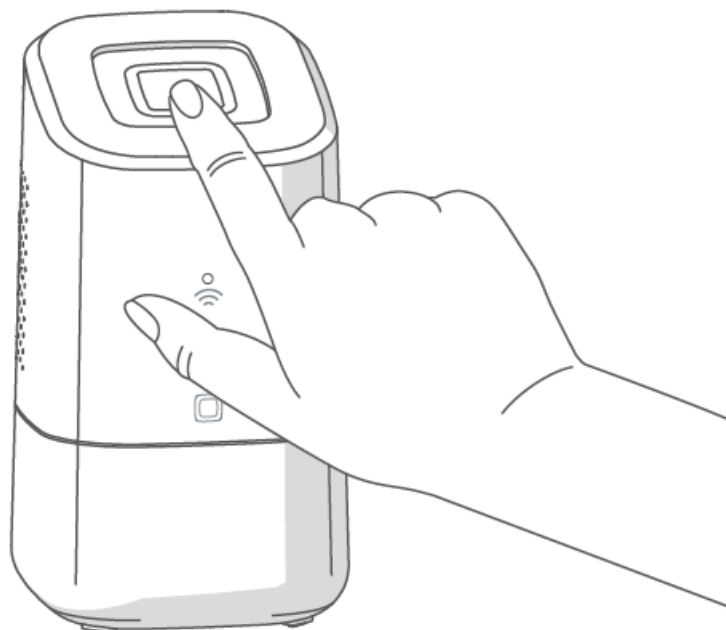


Figure 14

- Complete the installation steps in the Homematic IP app.
- The Home Control Unit is now set up and ready for use.

WLAN start-up

- Select WLAN start-up during the installation process.



Figure 15

- Connect the Home Control Unit to the power supply using the supplied plug-in mains adapter (H).

Ensure that the USB stick is inserted.

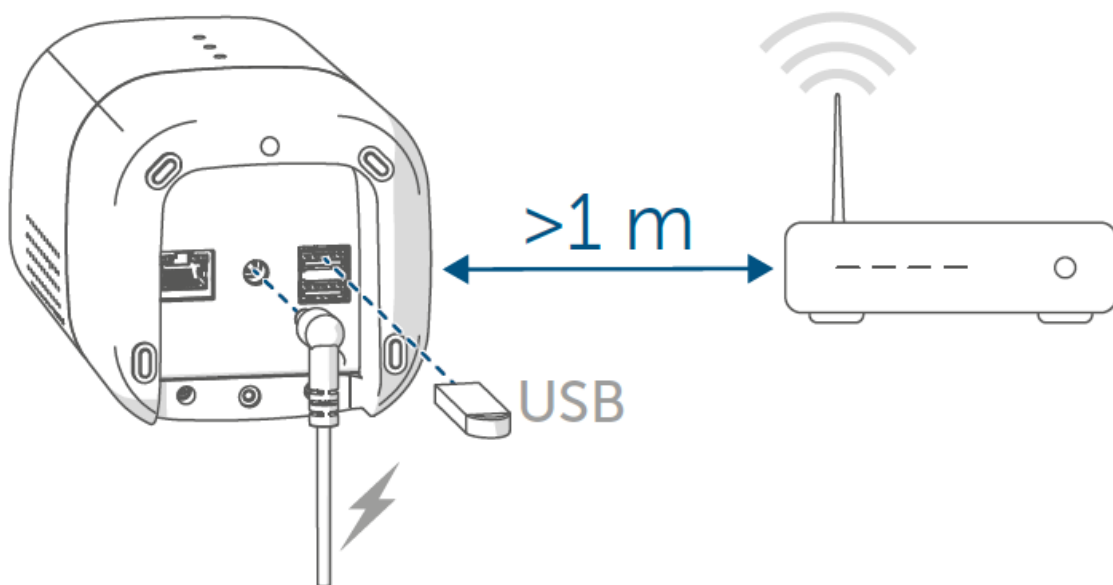


Figure 16

- Wait until the top LED of your Home Control Unit is switched off.

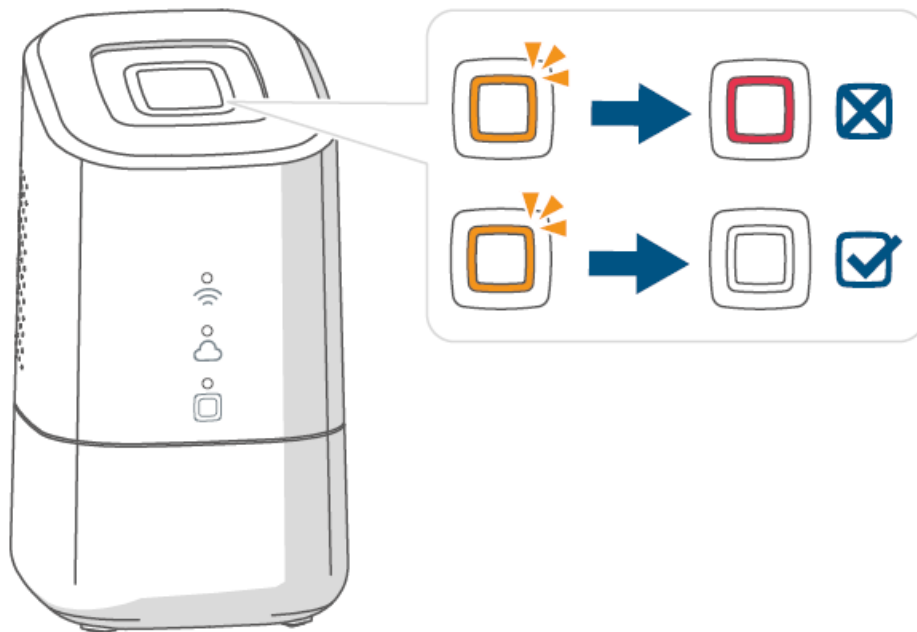


Figure 17

- Wait until the Homematic IP function LED () lights up blue continuously.

If the top LED lights up differently see „8.3 Error codes and flashing sequences“ on page 29 or follow the instructions in the app.

- Connect your end device to the WiFi hotspot of the Home Control Unit. Enter the password printed on the sticker under the SGTIN.

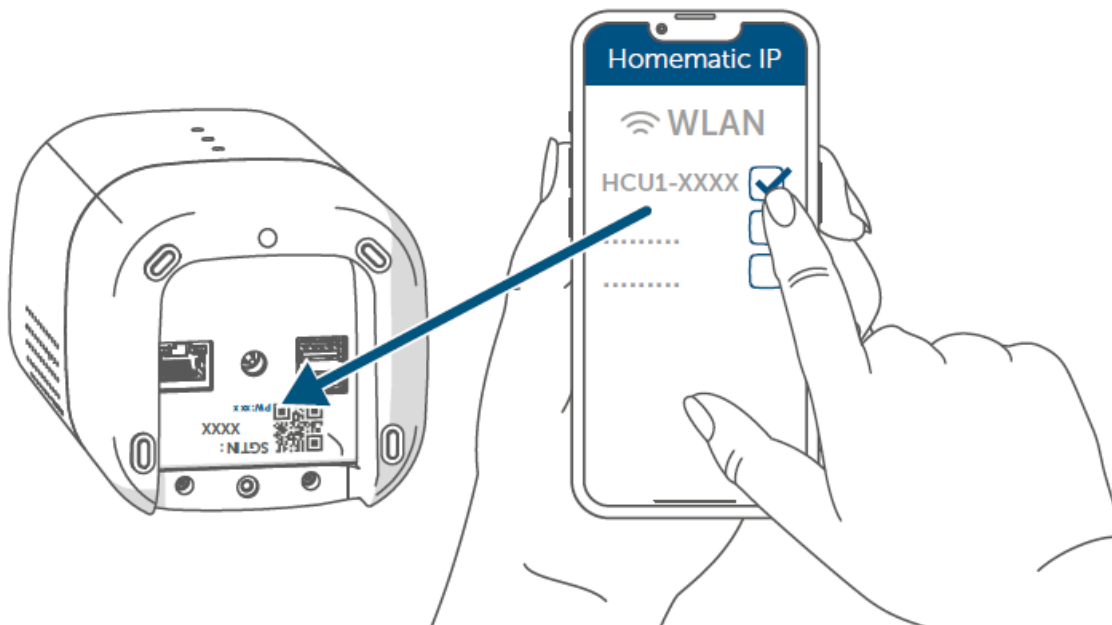
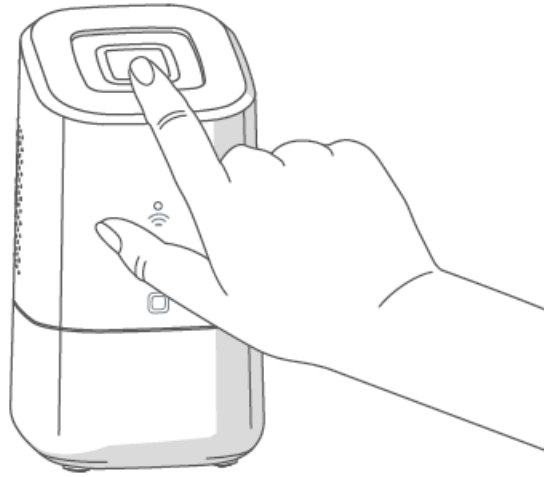


Figure 18

If the WiFi hotspot of the Home Control Unit is not displayed, you can activate it by pressing the system button three times. The top LED lights up white.

- Confirm the installation procedure by pressing the system button once.



- Select your home network and enter your password.



Figure 20

- Reconnect your end device to your home network.

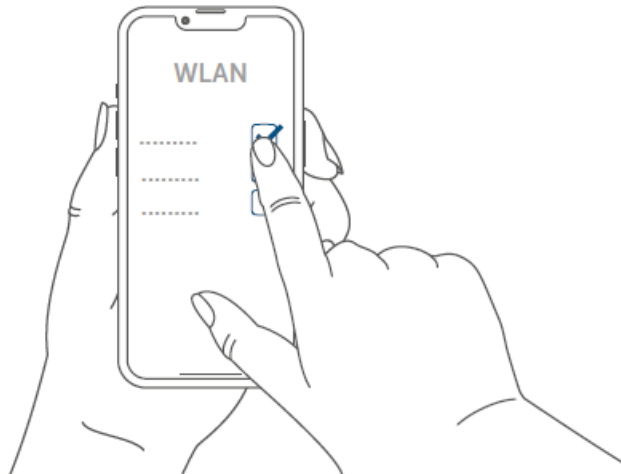


Figure 21

- Wait until all three status LEDs on your Home Control Unit light up blue continuously.



Figure 22

- If the top LED lights up differently see „8.3 Error codes and flashing sequences“ on page 29 or follow the instructions in the app.
- Complete the installation steps in the Homematic IP app.
- The Home Control Unit is now set up and ready for use.

HCUweb

You can use the “HCUweb” web service to make special network settings for the Home Control Unit or to link partner solutions.

HCUweb can only be accessed via the local network and not via the Internet.

The HCUweb features the following settings and functions:

- Network settings (DNS / static IP) for connection via network cable and WLAN
- Backups
- USB memory management
- Plug-in management
- Update configuration
- Display of system information
- Configuration online/offline mode
- Activate the USB stick in the HCU- web interface to be able to use the backup function, measurement data acquisition and plug-ins.
- The HCUweb is not a programming interface and does not replace the Homematic IP app.

You can access HCUweb in the local network at: <https://hcu1-XXXX.local> (XXXX describes the last four digits of the SGTIN). The SGTIN can be found on the under-side of the Home Control Unit (→ see figure).

You can also access the HCUweb via the IP address of the Home Control Unit.

You can use your router or the “NetFinder” add-on software to find out the IP address.

First steps: Pairing devices and adding rooms

As soon as your Homematic IP Home Control Unit and the Homematic IP app are ready for use, you can add additional Homematic IP devices and allocate them in the app to different rooms.

- Tap on the main menu symbol "... More" at the bottom right of the home screen, and then on "Pair device".
- Establish the power supply of the Homematic IP device you want to add to activate the pairing mode. For further information, please refer to the operating manual of the corresponding device.
- Follow the instructions of the app step by step.
- Select the desired solution for your device.
- In the app, give the device a name and create a new room or allocate the device to an existing room.

Please define the device names very carefully to avoid assignment errors when using various devices of the same type. You can change the device and room names at any time.

Operation and configuration

Once you have successfully paired your Homematic IP device and added rooms, you can conveniently control and configure your Homematic IP system. You will find more detailed information on operating the app and configuring the Homematic IP system in the Homematic IP User Guide (available in the Downloads area of our website www.homematic-ip.com).

Troubleshooting

Command not confirmed

If at least one receiver does not confirm a command, this may be caused by radio interference (see „11 General information about radio operation“ on page 31).

The error will be displayed in the app and may be caused by the following:

- Receiver cannot be reached
- Receiver is unable to execute the command (load failure, mechanical blockade, etc.)
- Receiver is defective

Duty cycle




The duty cycle is a legally regulated limit of the transmission time of devices in the 868 MHz range. The aim of this regulation is to safeguard the operation of all devices working in the 868 MHz range. In the 868 MHz frequency range we use, the maximum transmission time of any device is 1% of an hour (i.e. 36 seconds in an hour). Devices must cease transmission when they reach the 1% limit until this time restriction ends. Homematic IP devices are designed and produced with 100% conformity to this regulation. During normal operation, the duty cycle is not usually reached. However, repeated and radio-intensive pairing processes mean that it may be reached in isolated instances during start-up or initial installation of a system. If the duty cycle limit is exceeded, the device may stop working for a brief period. The device starts working correctly again after a short period (max. 1 hour).























Error codes and flashing sequences

Top LED

Flashing code	Meaning	Solution
Switched off	The Home Control Unit does not start.	Check that the power supply is ensured.
Flickering orange light	The Home Control Unit starts.	Wait until the top LED stops flickering orange.
Fast orange flashing	Preliminary stage for re-setting the factory settings	Press and hold the system button again for 4 seconds until the top LED lights up green.
1x long green light	Reset confirmed	You can continue operation.
1x long red light	Reset failed	Please try again.
Permanent red light	An error or alarm has occurred in your smart home that has not yet been acknowledged.	Acknowledge the error or alarm by pressing the system button (only if not used user-specifically).
User-defined	You can display selected functions using a customer-specific flashing or lighting behaviour with the top LED.	Customer-specific
Permanent purple light (5 min.)	After starting up the Home Control Unit, a remote pairing mode can be activated by simply pressing the system button.	(see „7.2 LAN start-up“ on page 23)

Status LEDs

Legend	
	The LED is off.
	The LED flashes.
	The LED lights up continuously.

Flashing code			Meaning	Solution
				
			The Home Control Unit starts.	No action required.
			The Home Control Unit cannot connect to the Internet and there is no connection to the cloud.	Check your internet connection. <ul style="list-style-type: none"> • Is the network cable plugged in? • Is the WiFi activated on your router? • Is the Internet LED on the router lit?
	–		The Home Control Unit can connect to the internet.	No action required.
			The connection to the cloud is deactivated. The Home Control Unit is in offline mode.	No action required.
			There is no connection to the cloud. The internet connection is OK.	Check your network settings. Try again later.
			The connection to the cloud is OK.	No action required.
–	–		There is a device error in the Homematic IP system. The top LED lights up red at the same time.	Restart the Home Control Unit.
–	–		The Homematic IP system is OK.	No action required.

Restoring factory settings

Resetting the Home Control Unit resets the entire Homematic IP installation. Afterwards, the factory state of your individual Homematic IP devices must be restored to enable them to be paired again.

Resetting the Home Control Unit

To restore the factory settings of the Home Control Unit, proceed as follows:

- Disconnect the Home Control Unit from the power supply by unplugging the mains adapter.
- Plug the mains adapter back in.
- Wait until the top LED is switched off and the status LEDs light up.
- Now press the system button for 5 seconds until the top LED flashes orange quickly.
- Release the system button.
- Press the system button again for 5 seconds until the top LED starts flashing green quickly. If the LED lights up red, please try again.

- Release the system button to conclude the procedure.

The device will perform a restart and the Home Control Unit is reset.

This process must be carried out within 5 minutes of starting the Home Control Unit.

Maintenance and cleaning

The device does not require you to carry out any maintenance. Leave any maintenance or repair to a specialist. Clean the device using a soft, clean, dry and lint-free cloth. Dampen the cloth a little with lukewarm water to remove more stubborn marks. Do not use any detergents containing solvents, as they could corrode the plastic housing and label.

General information about radio operation

Radio transmission is performed on a non-exclusive transmission path, which means that there is a possibility of interference occurring. Interference can also be caused by switching operations, electrical motors or defective electrical devices. The transmission range within buildings can differ significantly from that available in open space. Besides the transmitting power and the reception characteristics of the receiver, environmental factors such as humidity in the vicinity play an important role, as do on-site structural/screening conditions.

eQ-3 AG, Maiburger Straße 29, 26789 Leer, Germany hereby declares that the radio equipment type Homematic IP HmIP-HCU1, HmIP-HCU1-A is compliant with Directive 2014/53/EU. The full text of the EU declaration of conformity can be found at: www.homematic-ip.com

Disposal

Instructions for disposal



This symbol means that the device must not be disposed of as household waste, general waste, or in a yellow bin or a yellow bag. For the protection of health and the environment, you must take the product and all electronic parts included in the scope of delivery to a municipal collection point for old electrical and electronic equipment to ensure their correct disposal. Distributors of electrical and electronic equipment must also take back obsolete equipment free of charge. By disposing of it separately, you are making a valuable contribution to the reuse, recycling and other methods of recovery of old devices. Please also remember that you, the end user, are responsible for deleting personal data on any used electrical and electronic equipment before disposing of it.

Information about conformity



The CE mark is a free trademark that is intended exclusively for the authorities and does not imply any assurance of properties.



For technical support, please contact your retailer.

Technical specifications

- Device short description: HmIP-HCU1, HmIP-HCU1-A
- Supply voltage
- Plug-in mains adapter (input): 100 V-240 V/50 Hz
- Power consumption – plug-in mains adapter (max.): 13.0 W
- Supply voltage: 5.1 VDC (SELV)
- Current consumption: max. 2600 mA
- Power consumption in standby: 2.0 W
- Protection rating: IP20

- Ambient temperature: 5 to 40°C
- Dimensions (W x H x D): 96 x 173 x 96 mm
- Weight: 510 g
- Radio frequency band: 868.0-868.6 MHz
869.4-869.65 MHz
- Maximum radiated power: 10 dBm max.
- Receiver category: SRD category 2
- Typical range in open space: 400 m
- USB interface: 2x USB host port
(use only for USB stick)
- Duty cycle: < 1 % per h / < 10 % per h
- Network: 10/100 MBit/s, Auto-MDIX
- WiFi: 2.4 GHz (1-11) (802.11b,g,n / 150 MBit/s)
5.0 GHz (36-48) (802.11n,ac / max. 433 MBit/s)
- Maximum radiated power WLAN: 16 dBm

Subject to modifications.



Manufacturer's authorised representative:

eQ-3

eQ-3 AG

Maiburger Straße 29

26789 Leer / GERMANY

www.eQ-3.de

Documents / Resources

	<p>homematic IP HmIP-HCU1 Home Control Unit [pdf] Instruction Manual</p> <p>HmIP-HCU1, HmIP-HCU1-A, HmIP-HCU1 Home Control Unit, HmIP-HCU1, Home Control Unit, Control Unit, Unit</p>
--	---

References

- [User Manual](#)

[Manuals+](#), [Privacy Policy](#)

This website is an independent publication and is neither affiliated with nor endorsed by any of the trademark owners. The "Bluetooth®" word mark and logos are registered trademarks owned by Bluetooth SIG, Inc. The "Wi-Fi®" word mark and logos are registered trademarks owned by the Wi-Fi Alliance. Any use of these marks on this website does not imply any affiliation with or endorsement.