
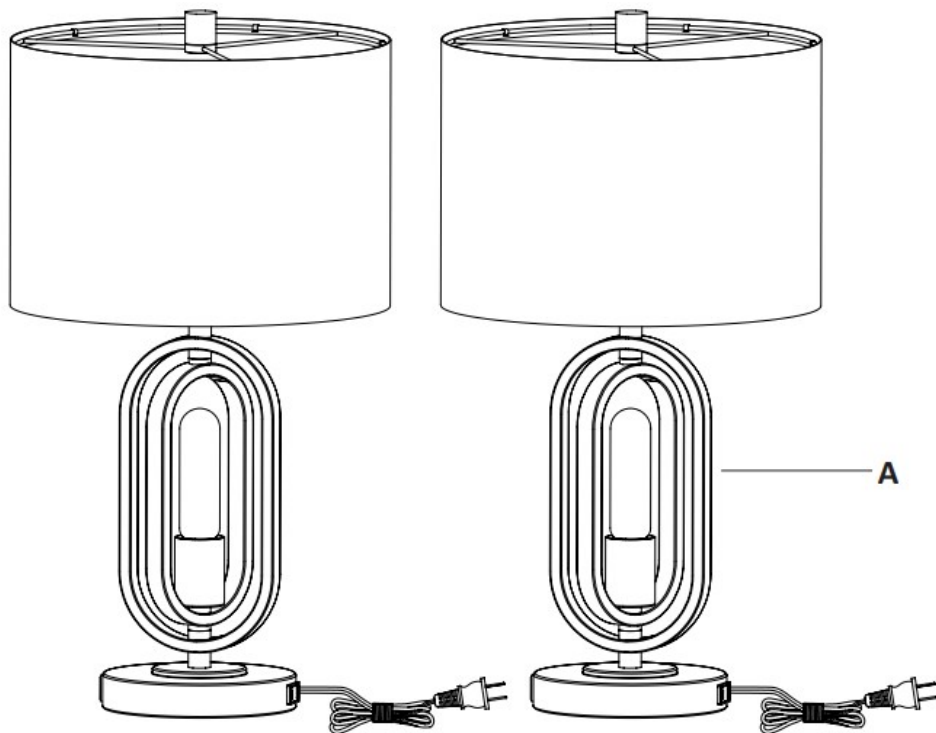




HOMELUX 21152 Table Lamp Set of 2 User Manual

[Home](#) » [HOMELUX](#) » HOMELUX 21152 Table Lamp Set of 2 User Manual 

HOMELUX 21152 Table Lamp Set of 2 User Manual



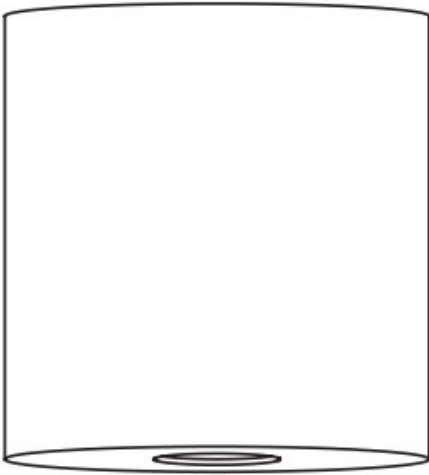
Contents

- 1 Hardware
- 2 IMPORTANT SAFETY INFORMATION
- 3 PREPARATION
- 4 ASSEMBLY
 - 4.1 SHADE ASSEMBLY
 - 4.2 LAMP ASSEMBLY
- 5 FCC STATEMENT
- 6 CLEANING
- 7 TROUBLESHOOTING
- 8 Documents / Resources
- 9 Related Posts

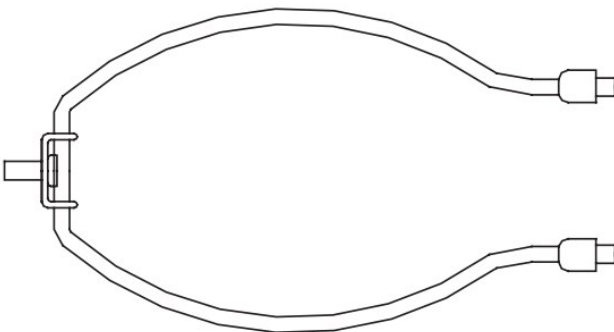
Hardware

(Parts are not to scale)

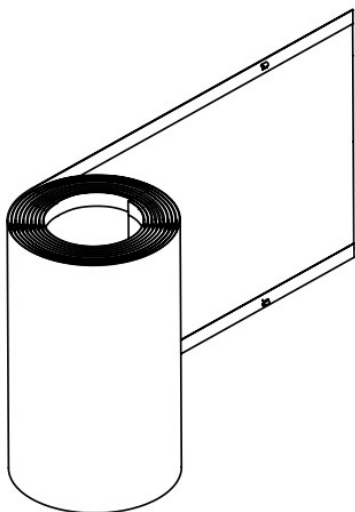
- H1 Finial (Pre-assembled to harp (H2)) 2 pcs



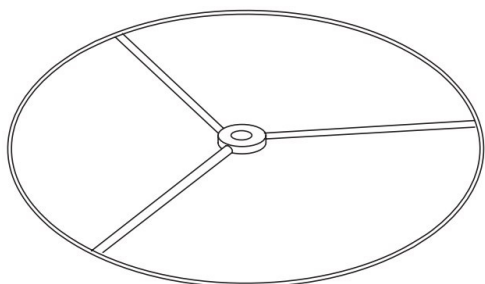
- H2 Harp 2 pcs



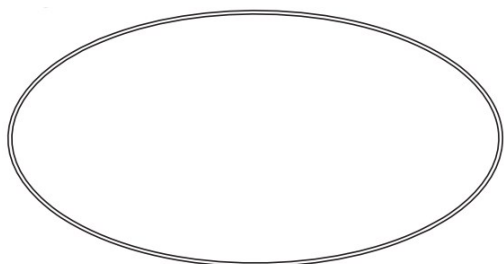
- H3 Shade panel 2 pcs



- H4 Top ring 2 pcs



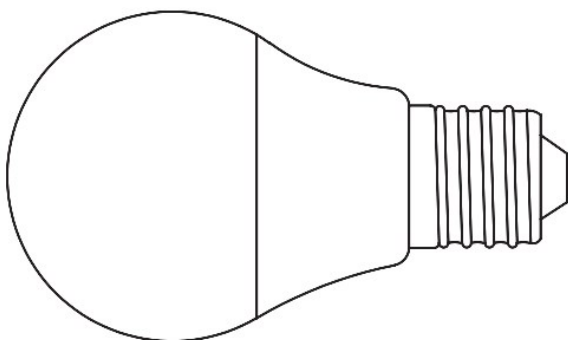
- H5 Bottom ring 2 pcs



- H6 5W LED bulb 2 pcs



- H7 9W LED bulb 2 pcs



THIS MANUAL CONTAINS IMPORTANT SAFETY INFORMATION. PLEASE READ AND KEEP FOR FUTURE REFERENCE.

IMPORTANT SAFETY INFORMATION

- This lamp is for indoor use only. The lamp should not be used near water. Never immerse the lamp in water or other liquids.
- Never cover the lamp with any object including cloth or paper as this is a fire hazard.
- Do not handle the bulb immediately after the light is turned off as it will be hot.
- This portable lamp has a polarized plug (one blade is wider than the other) as a safety feature to reduce the risk of electric shock. This plug will fit into a polarized outlet only one way. If the plug does not fit fully into the outlet, reverse the plug. If it still does not fit, contact a qualified electrician. Never use with an extension cord unless plug can be fully inserted. Do not alter the plug.

PREPARATION

- Before beginning assembly, installation or operation of product, make sure all parts are present. Compare parts with package contents list and diagram on previous page. If any part is missing or damaged, do not attempt to assemble, install or operate the product. Contact customer service for replacement parts

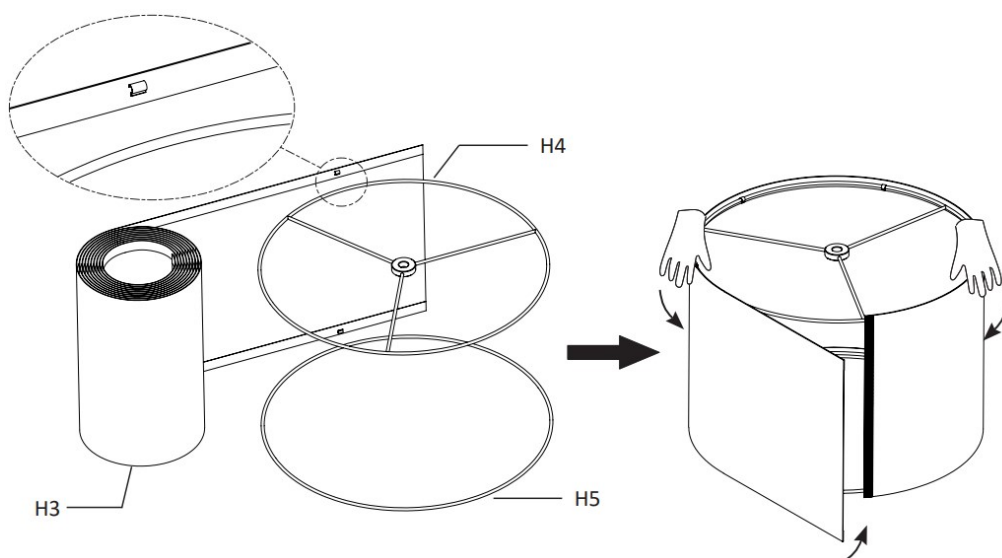
ASSEMBLY

SHADE ASSEMBLY

Assembling the shade

- Place the shade panel (H3) and top ring (H4) and bottom ring (H5) from the box.
- Attach the top ring (H4) and the bottom ring (H5) to clips on the shade panel (H3) securely into the clips.
- Attach the shade panel (H3) together by velcro.
- Repeat this step for the second shade.

NOTE: Push and pull the shade panel (H3) to be tight before attach it together by velcro.

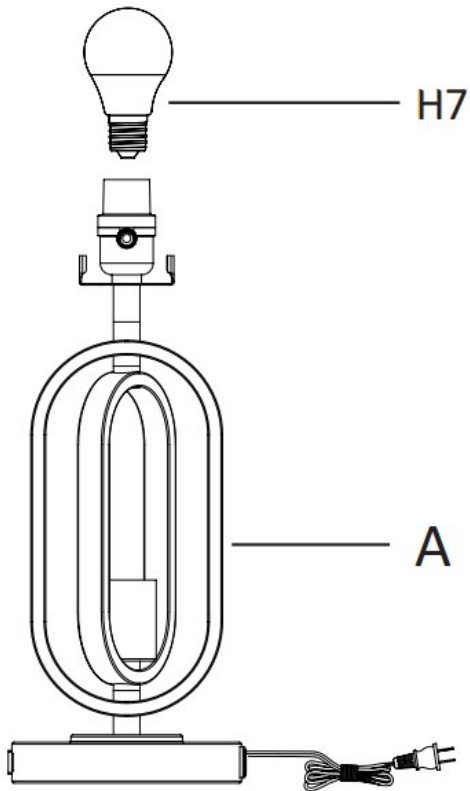


LAMP ASSEMBLY

Installing the upper light bulb

- Install the light bulb (H7) into the socket of the top of the fixture body (A). Use one MAX 10W medium base (E26) self-ballasted LED bulb (9 W medium base (E26) self-ballasted LED bulb (H7) included).

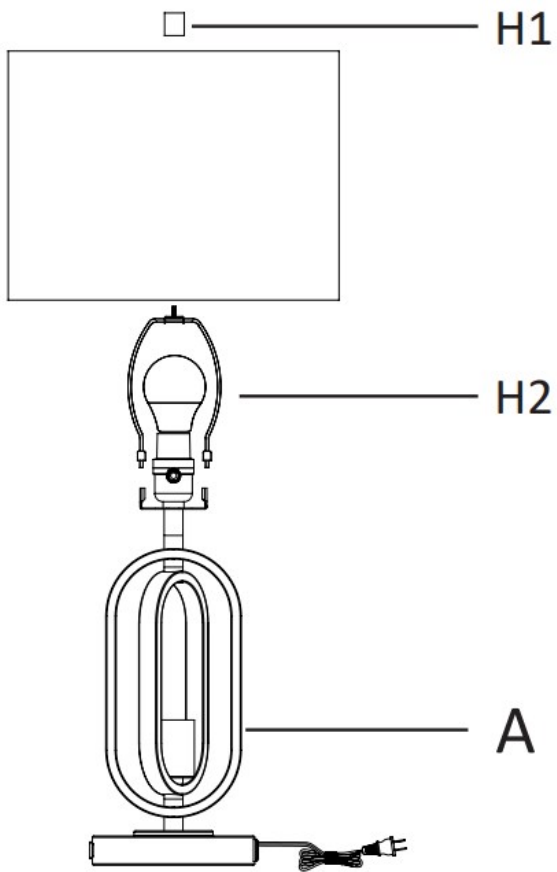
NOTE: You can also use one MAX 60W medium base (E26) type “A” bulb. Do not exceed the recommended wattage.



Assembling the harp and the shade

- Insert the harp (H2) prongs into the saddle of the socket assembly (H8) and slide the retaining covers over joints to secure the harp.
- Unscrew the finial (H1) from the harp (H2).
- Place the shade assembly onto the harp (H2) and secure with the finial (H1).

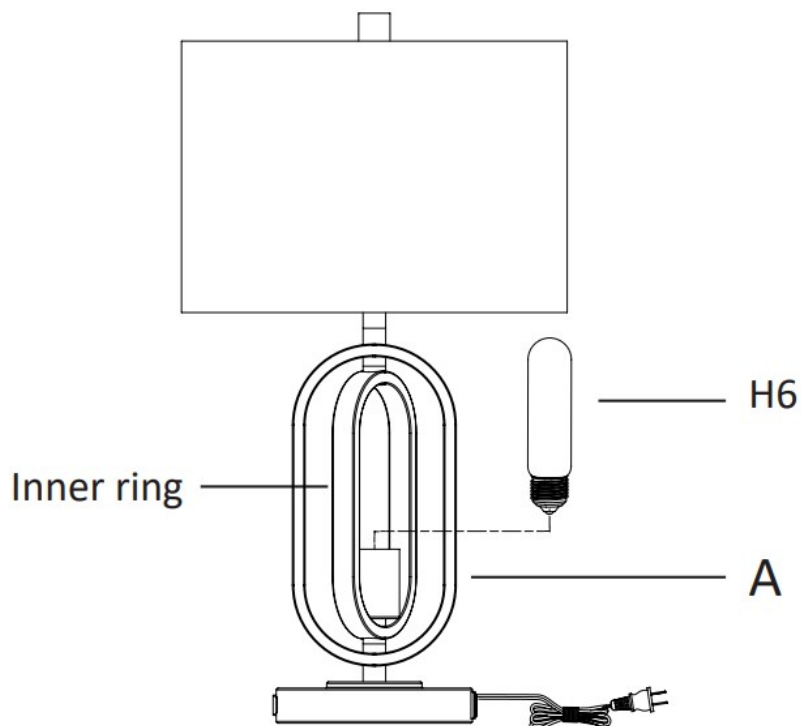
NOTE: Grasp the finial (H1) to adjust the shade assembly to level if shade is skewed.



Installing the night light

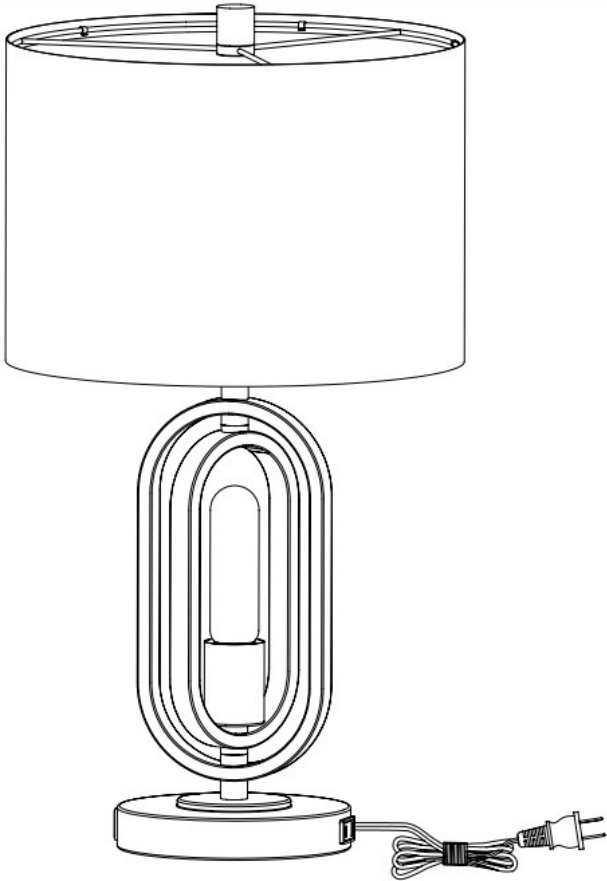
- Install the light bulb (H6) into the socket of the bottom of the fixture body (A). Use one MAX 9W medium base (E26) self-ballasted LED bulb (5W medium base (E26) self-ballasted LED bulb (H6) included).
- Adjust the inner ring to the desired position.

NOTE: You can also use one MAX 40W medium base (E26) type “T” bulb. Do not exceed the recommended wattage.



Assembling the second lamp

- Repeat steps 1 – 3 for the second lamp.



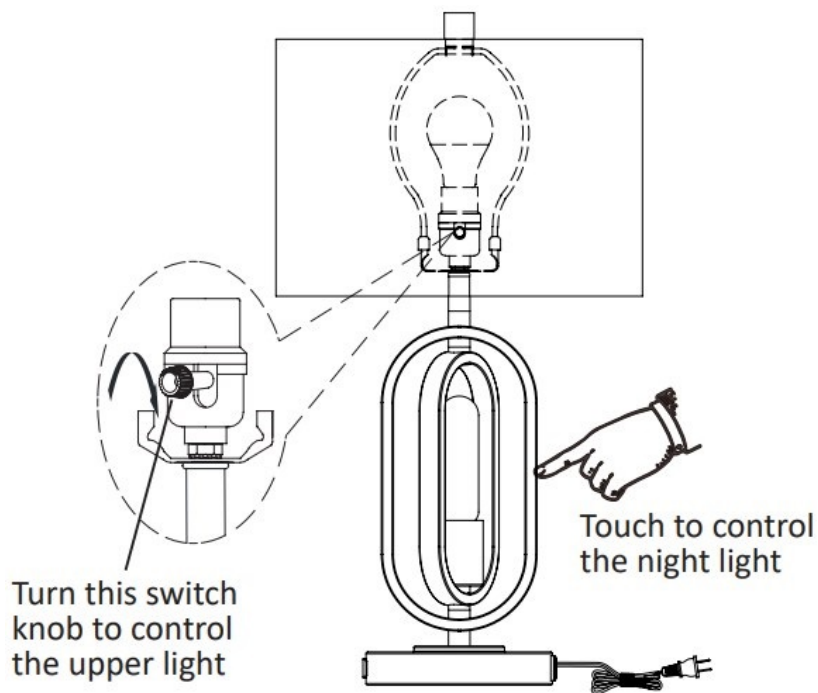
Using the table lamp

- Plug into the wall outlet, turn on the switch and enjoy.

Upper light – Turn clockwise of the top switch to ON/ OFF the upper light.

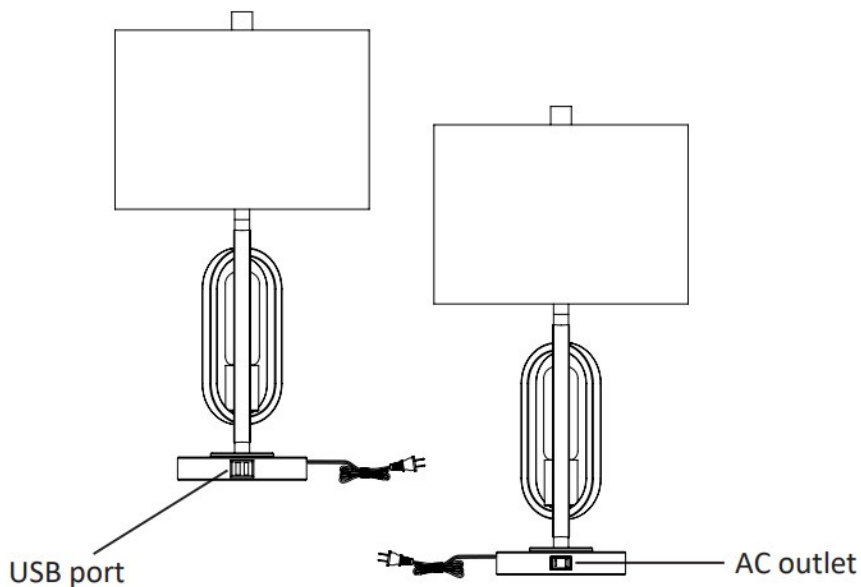
Night light – Touch the fixture body to control the night light, it will operate:

- ON
- LOW LIGHT
- MEDIUM LIGHT
- HIGH LIGHT
- OFF



Using the USB port and AC outlet

- On one side of the base, there is an AC outlet for you to connect any electronic or electrical device of your choice.
- On other side of the base, there is a built in Dual USB (type A port and one type C port) for you to connect a charging cable (not included) (powers phones, tablets & more).
- The built-in USB port type A and type C rating: 5Vdc, 2.1A



FCC STATEMENT

Homelux Designs LLC.

Model: 21152

Address: 8605 SANTA MONICA BLVD #79525 WEST HOLLYWOOD, CALIFORNIA 90069-4109, USA

Telephone: 323-908-8554

This device complies with part 15 of the FCC Rules. Operation is subject to the following two conditions:

1. This device may not cause harmful interference, and
2. This device must accept any interference received, including interference that may cause undesired operation.

CAUTION: Any changes or modifications not expressly approved by the party responsible for compliance could void the user's authority to operate the equipment.

Note: This equipment has been tested and found to comply with the limits for a Class B digital device, pursuant to part 15 of the FCC Rules. These limits are designed to provide reasonable protection against harmful interference in a residential installation. This equipment generates, uses and can radiate radio frequency energy and, if not installed and used in accordance with the instructions, may cause harmful interference to radio communications. However, there is no guarantee that interference will not occur in a particular installation. If this equipment does cause harmful interference to radio or television reception, which can be determined by turning the equipment off and on, the user is encouraged to try to correct the interference by one or more of the following measures:

- Reorient or relocate the receiving antenna.
Increase the separation between the equipment and the receiver.
- Connect the equipment into an outlet on a circuit different from that to which the receiver is connected.
- Consult the dealer or an experienced radio / TV technician for help

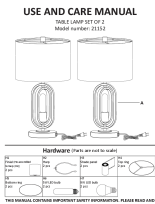
CLEANING

- Do not use any cleaners with chemicals, solvents, or harsh abrasives. Use only a dry, soft cloth to dust or wipe carefully.
- To clean the fixture, pull the plug from the wall outlet. Use a dry or slightly dampened, clean cloth to wipe the exterior surface of the fixture.

TROUBLESHOOTING

- The light does not come on at all:
 - **a)** Ensure the power supply is turned on.
 - **b)** Ensure the cord is plugged into an outlet.
 - **c)** Ensure the circuit breaker is set in the "ON" position.
- Fuse blows or circuit trips when light is turned on.
 - **a)** Check for crossed wires, ensure wiring is correct

Documents / Resources

	<p>HOMELUX 21152 Table Lamp Set of 2 [pdf] User Manual 21152, Table Lamp Set of 2, 21152 Table Lamp Set of 2, 21152 Table Lamp Set, Table Lamp Set, Lamp Set</p>
---	--