

Homelite LR4400 Generator



Homelite LR4400 Generator Owner's Manual

[Home](#) » [Homelite](#) » Homelite LR4400 Generator Owner's Manual 

Contents

- 1 Homelite LR4400 Generator
- 2 Product Information
- 3 Product Usage Instructions
- 4 SYMBOL DEFINITIONS
- 5 SAFETY PRECAUTIONS
- 6 SAFETY INSTRUCTIONS
- 7 PREPARING FOR USE
- 8 OPERATION
- 9 MAINTENANCE
- 10 TROUBLE SHOOTING
- 11 HOME I TE PRODUCT. LIMITED WARRANTY
- 12 PRODUCT INFORMATION
- 13 Documents / Resources
 - 13.1 References

Homelite®

Homelite LR4400 Generator



Product Information

Specifications:

- **Model:** [Model Name]
- **Dimensions:** [Dimensions]
- **Weight:** [Weight]
- **Power Source:** [Power Source]
- **Colour:** [Color]

Description:

The [Product Name] is a versatile and innovative device designed for [product's main purpose]. It is equipped with state-of-the-art technology to provide users with a seamless experience. Whether you are a professional or a casual user, this product offers a wide range of features and functionalities to meet your needs.

Main Features:

- [Feature 1]: [Description of feature 1]
- [Feature 2]: [Description of feature 2]
- [Feature 3]: [Description of feature 3]

Included Accessories:

- [Accessory 1]

- [Accessory 2]
- [Accessory 3]

Product Usage Instructions

Section 1: Setup and Installation

To begin using the [Product Name], follow these steps:

1. Unbox the product and ensure all the included accessories are present.
2. Read the user manual carefully for any specific instructions related to setup.
3. Connect the device to a power source using the provided cable.
4. Follow the on-screen prompts to complete the initial setup process.

Section 2: Basic Operation

Once the setup is complete, you can start using the [Product Name] with the following steps:

1. Power on the device by pressing the power button located on the [specific location].
2. Wait for the device to boot up and display the main menu on the screen.
3. Use the [specific controls/buttons] to navigate through the menu options.
4. Select your desired function or feature by pressing the corresponding button or icon.
5. Follow any on-screen instructions or prompts to proceed with your selected function.

FAQ (Frequently Asked Questions)

Q: How do I update the firmware of the [Product Name]?

A: To update the firmware of the [Product Name], please follow these steps:

1. Visit our official website and navigate to the "Downloads" section.
2. Locate the firmware update file for your specific model and download it.
3. Transfer the firmware update file to a USB drive.
4. Connect the USB drive to the [Product Name] using the provided USB port.
5. Access the device's settings menu and navigate to the "Firmware Update" option.
6. Select the firmware update file from the USB drive and follow the on-screen instructions to initiate the update process.


Q: Can I use the [Product Name] with other devices?


A: Yes, the [Product Name] is compatible with a wide range of devices such as smartphones, tablets, and computers. It supports various connectivity options like Bluetooth, Wi-Fi, and USB for seamless integration with other devices.

Q: How long does the battery of the [Product Name] last?

A: The battery life of the [Product Name] may vary depending on usage and settings. On average, it can last up to [battery life] on a single charge.

SYMBOL DEFINITIONS

-  Warning, Danger Caution

-  Read all Safety, Operating and maintenance instructions.

Thank you for buying this new HOMELITE® Generator! Homelite provides a wide range of Lawn and Garden, Forestry and Construction Equipment products which meet the needs of both the consumer and commercial markets. HOMELITE products are warranted and are serviced by a large network of servicing dealers. FOR CUSTOMER ASSISTANCE FOR THE LOCATION OF YOUR NEAREST HOMELITE SERVICING DEALER IN THE UNITED STATES, PUERTO RICO, AND THE VIRGIN ISLANDS, CALL 1-800-242-4672.

SAFETY PRECAUTIONS

- If this generator is used for emergency standby service it will be necessary to install a manual transfer switch between the electric utility's meter and the building's distribution panel. The transfer switch isolates the generator and load from the utility power line, thus avoiding any danger of electricity being fed back to the utility lines.
The installation should be done by a licensed electrician.
- Never operate the machine in an explosive atmosphere, near combustible materials or where ventilation is not sufficient to carry away exhaust fumes. Exhaust fumes can cause serious injury or death.
- When starting the machine, be sure that nothing is in a position to be hit by the operators hand or arm.
- Be sure the switch on electric power tools is in the "OFF" position before plugging them into the machine.

FOLLOW THESE INSTRUCTIONS TO REDUCE THE RISK OF INJURY

- This generator is equipped with a grounding terminal for your protection. Always complete the ground path from the generator to an external ground source as instructed in the section labeled "Grounding the Generator."
- Keep the immediate area free of all bystanders.
- Be sure each person who operates this machine is properly instructed in its safe operation.
- Do not operate this machine or any electrical tool in any area where water or similar materials constitute an electrical hazard to the operator. Do not operate on wet surfaces or in the rain.
- Always be sure that the machine is on secure footing so that it cannot slide or shift around, endangering workers.
- Avoid contacting the hot exhaust manifold, muffler or cylinder. Keep clear of all rotating parts.
- Unless the tool or appliance is double insulated, ground it. Tools and appliances which have 3 prong plugs must be plugged into extension cords and electrical receptacles with 3 holes. Before operating any electrical item, be sure it is in good repair

MAINTENANCE

- Use HOMELITE genuine replacement parts. Failure to do so may cause poor fit and injury.
- Never operate machine with any guard removed.
- Shut off the engine and disconnect the spark plug wire before working on any part of this machine.
- Always keep the machine and all associated equipment clean properly serviced and maintained.

REFUELING (DO NOT SMOKE!)

- Observe all safety regulations for the safe handling of fuel.
 - Handle fuel in safety containers.
 - If container does not have a spout, use a funnel.
 - Do not refill fuel tank while the engine is running.
 - Fill the tank only on an area of bare ground. While filling the tank, keep heat, sparks and open flame away.
- Carefully clean up any spilled fuel before starting engine.

SAFETY INSTRUCTIONS

GROUND FAULT CIRCUIT INTERRUPTER

For additional protection against the hazards of electrical shock from defective attachments such as tools, cords and cables, consider the use of a GFCI (Ground Fault Circuit Interrupter). The GFCI is a device that interrupts electricity from either utility or a generator by means of a special type of circuit breaker if a fault to ground occurs.

EXAMPLE: If a person is in contact with the ground and touches a defective tool or bare wire from a damaged cord set, he may receive an electrical shock. The GFCI would sense this shock and interrupt the electrical supply before the person is seriously injured. A GFCI can be used with generators that have the neutral wire internally grounded to the frame and the frame properly grounded to the earth. The GFCI will not work on generators that do not have the neutral grounded to the frame. Homelite generators have neutral wire around to frame

WARNING The GFCI may not function unless the generator is properly grounded. Follow the correct grounding procedure specified below,

NOTE: Situations exist where the GFCI will not afford any protection against the hazards of electrical shock.

EXAMPLE: If a person touches two or more conductors from a damaged cord set and is not in direct contact with the ground, he may receive a shock. Since there is no path to ground for a current to flow through, the GFCI will not operate and serious injury may result.

The GFCI is merely an added safety precaution. There are no substitutes for good safety precautions, correct electrical practices and proper maintenance of cords, electrical equipment and connections.

GROUNDING THE GENERATOR

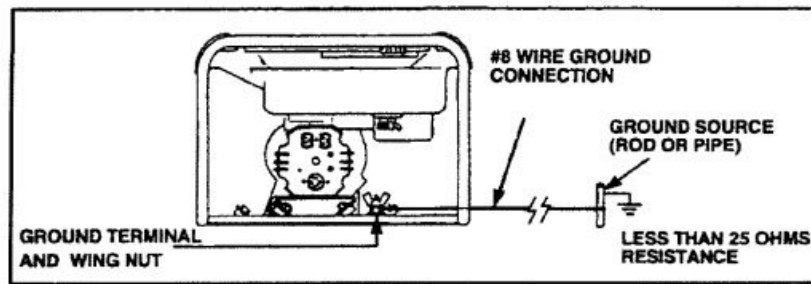
The wing nut and ground terminal on the frame must always be used to connect the generator to a suitable ground source. The ground path should be made with #8 size wire. Connect the terminal of the ground wire between the lock washer and the wing nut, and tighten the wing nut fully. Connect the other end of the wire securely to a suitable ground source. The National Electric Code contains several practical ways in which to establish a good ground source. Examples given below illustrate a few of the ways in which a good ground source may be established.

A metal underground water pipe in direct contact with the earth for at least 10 feet can be used as a grounding source. If an underground pipe is unavailable, an 8 foot length of pipe or rod may be used as the ground source. The pipe should be 3/4 inch trade size or larger and the outer surface must be noncorrosive. If a steel or iron rod is used it should be at least 5/8 inch diameter and if a nonferrous rod is used it should be at least 1/2 inch diameter and be listed as material for grounding. Drive the rod or pipe to a depth of 8 feet. If a rock bottom is encountered less than 4 feet down, bury the rod or pipe in a trench. All electrical tools and appliances operated from this generator, must be properly grounded by use of a third wire or be "Double Insulated".

It is recommended that:

1. Use electrical devices with 3 prong power cords.
2. Use an extension cord with a 3 hole receptacle and a 3 prong plug at opposite ends to ensure continuity of the ground protection from the generator to appliance.

We strongly recommend that all applicable Federal, State and local regulations relating to grounding specifications be checked and adhered to.



LINE TRANSFER SWITCH

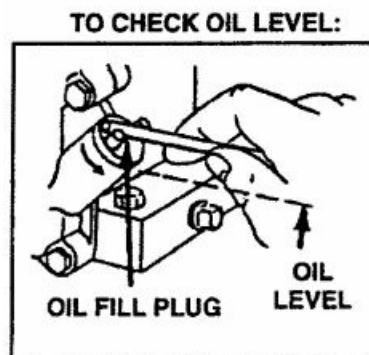
If this generator is used for standby service, it must have a transfer switch between the utility power service and the generator. The transfer switch not only prevents the utility power from feeding into the generator, but it also prevents the generator from feeding out into the utility company's lines. This is intended to protect a serviceman who may be working on a damaged line. THIS INSTALLATION SHOULD BE DONE BY A LICENSED ELECTRICIAN AND ALL LOCAL CODES MUST BE FOLLOWED.

PREPARING FOR USE

• ENGINE OIL

CAUTION This engine crankcase is not filled with oil at the factory, so be sure to fill it before operating the engine.

NOTE When checking the oil be sure the engine is level. Always use a high quality detergent oil with an API classification of SE or SF. See engine manual for specific recommendations on SAE viscosity grade, oil capacities and oil change intervals.



This engine is equipped with a "Low Oil" shut-off system for engine

• FUELING

Do not mix oil with gasoline.

RECOMMENDED FUEL: Use any gasoline intended for automotive use. For normal use, purchase fuel that can be used in 30 days. This will assure fuel freshness and volatility tailored to the season. Consult engine operating and maintenance instructions for use of oxygenated fuels.

We recommend stabilization of fuel with an anti-oxidant fuel stabilizer, such as STA-BIL, a product of Gold Eagle Co., Chicago, IL 60632. Unstabilized fuel will stay fresh for only up to three months and should not be used after that time.

WHEN FILLING TANK:

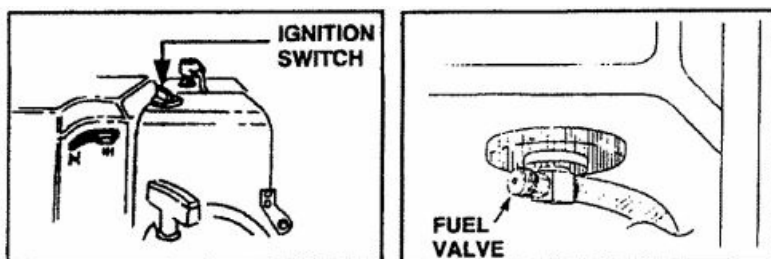
1. Clean area around fuel cap and loosen cap slowly. Rest the cap on a clean surface.
2. Carefully put fuel into the tank, filling to approximately 1/4 inch (5mm) of the top. Avoid spillage.
3. Immediately replace cap and hand tighten. Wipe up any fuel spillage.

DO NOT OPERATE ENGINE IF GASOLINE IS SPILLED. AVOID CREATING ANY IGNITION UNTIL THE GASOLINE HAS EVAPO- RATED.

STARTING AND STOPPING

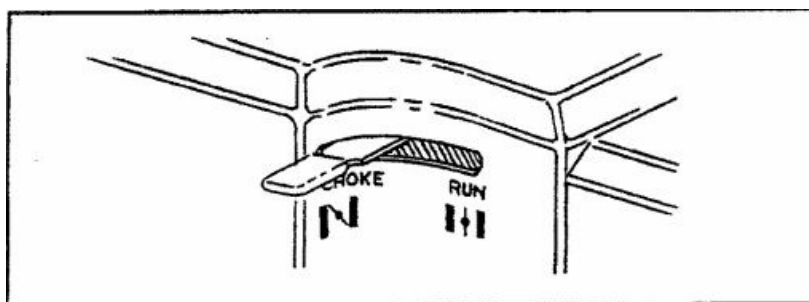
Check engine oil before starting

1. Turn ignition switch to "ON" (1).
2. Turn the fuel valve counterclockwise to open (located under fuel tank).



NOTE: If the engine is warm, set choke to "RUN" position.

3. Set choke to the "CHOKE" position.



4. Grasp starter grip and pull slowly until starter engages, then rapidly to overcome compression and start engine.
5. When engine starts, gradually move choke to "RUN" position. Allow engine to warm up before applying a load.

TO STOP: Turn ignition switch to "OFF" (O).

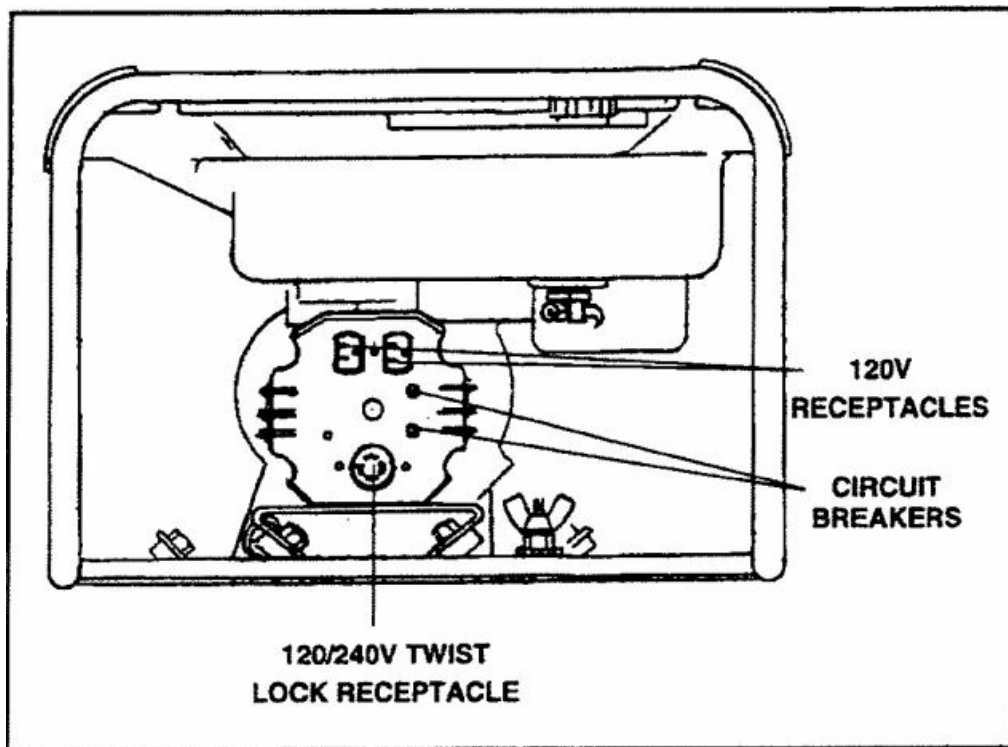
OPERATION

MODEL	LR4400	RATED VOLTAGE (AC)	120/240 VOLTS
ENGINE	BRIGGS & STRATTON, 8 H.P.	VOLTAGE REG.	INHERENT
WATTS (AC) CONTINUOUS	4000 WATTS	FREQUENCY	60 Hz
WATTS (AC) INTERMITTENT	4400 WATTS	RUN TIME HRS./TANK OF FUEL	6.0 HOURS
RATED AMPERAGE	33.3/16.6	FUEL TANK CAPACITY	5 GALLONS (US) 19 LITERS

NOTE Unit ratings are established based on operation at standard conditions of 60° F and at sea level. The performance of the generator must be de-rated for temperature and altitude by 1% for every 10° F above 60° F and 3.5% for every 1000 feet above sea level. Due to the operational characteristics of the thermal type circuit breaker, the power available from the generator will decrease slightly with a corresponding increase in ambient temperature.

Due to continuing product improvements, specifications are subject to change without notice.

DO NOT ALLOW CHILDREN OR UNTRAINED INDIVIDUALS TO USE THIS UNIT.



LOAD APPLICATION

The continuous duty rating should not be exceeded for long periods of time. Always be sure that the voltage, amperage and frequency requirements of the equipment to be used can be satisfied by the generator. To avoid damage, the generator should not be operated at the intermittent rating for more than 10 minutes out of every hour.

CONTROL PANEL

The generator is equipped with one 120 volt 15 amp, parallel slot, U- ground, NEMA 5-15R duplex receptacle and one 120/240 volt, 20amp, twist lock receptacle, NEMA L14-20R. Simultaneous loading of the 120 and 240 volt circuits should not exceed the continuous duty rating of the generator. The circuit breaker protects against severe overloads or short circuits. If the circuit breaker trips, the cause should be determined and corrected prior to continuing use. NEVER EXCEED THE RATING OF A RECEPTACLE.

CABLE SIZE

Equipment damage can result from low voltage. Therefore, to prevent excessive voltage drop between the generator and the equipment, the cable should be of adequate gauge for the length used. The cable selection chart gives the maximum cable length for various gauges of wire which can adequately carry the loads shown.

CURRENT IN AMPERES	LOAD IN WATTS		MAXIMUM ALLOWABLE CABLE LENGTH				
	AT 120 VOLTS	AT 240 VOLTS	#8 WIRE	#10 WIRE	#12 WIRE	#14 WIRE	#16 WIRE
2.5	300	600		1000 ft.	600 ft.	375 ft.	250 ft.
5	600	1200		500	300	200	125
7.5	900	1800		350	200	125	100
10	1200	2400		250	150	100	50
15	1800	3600		150	100	65	
20	2400	4800	175 ft.	125	75	50	
25	3000	6000	150	100	60		
30	3600	7200	125	65			
40	4800	9600	90				

ELECTRIC MOTOR LOADS

It is characteristic of common electric motors in normal operation to draw up to six times their running current while starting. This table may be of assistance in determining the proper equipment to be used so as to avoid equipment damage. It is important to note that the equipment should be fair to start or apart no being used. compared to the rated output of the generator.

Motor Size (H.P.)	Running Watts	Watts Required to Start Motor		
		Repulsion Induction	Capacitor	Split Phase
1/8	275	600	850	1200
1/6	275	600	850	2050
1/4	400	850	1050	2400
1/3	450	975	1350	2700
1/2	600	1300	1800	3600
3/4	850	1900	2600	-
1	1100	2500	3300	-

MAINTENANCE

• ENGINE:

See Engine Manual for Maintenance Procedures. The engine for this generator is governed to operate at speeds close to 3600 RPM (60 Hz) throughout the operating load range. The no load speed (before a load is applied) will be just a bit higher than the load speed and is normally set to 3750 RPM.

WARNING Do not tamper with the governor mechanism, change the setting experimentally, or push the throttle open in an attempt to generate more electrical current; equipment damage may result.

Governor speed adjustment should be made only by an experienced serviceman.

• GENERATOR:

- Keep all air vents clear.
- Keep clean.
- Periodically check all fasteners and tighten.

STORAGE

When the generator is not used for a long period, it should be stored properly. Before storing, proceed as follows:

1. Drain the fuel tank completely.
2. Start the engine and allow it to run until fuel in the carburetor and fuel lines have been used.
3. Remove the spark plug and put 3 to 5 cc of oil into the spark plug hole in the cylinder head.
4. Install the spark plug and slowly pull the starter handle a few times to distribute the oil.
5. Retighten all bolts and nuts.
6. Clean the exterior surface of the generator and apply a rust inhibitor.
7. Store the generator in a dry, well ventilated place.

TROUBLE SHOOTING

NOTE: Servicing generators may require use of specialized tools and electronic equipment. If these solutions do not solve the problem contact your authorized servicing dealer.

PROBLEM: Engine will not start:

1. Is the engine switch ON?
2. Is there fuel in the tank?
3. Is there spark at the spark plug?
 - **A)** Remove the spark plug cap. Clean any dirt from around the plug base, then remove the spark plug.
 - **B)** Install the spark plug in the plug cap.
 - **C)** Turn the engine switch on.

- **D)** Grounding the electrode to any engine ground, pull the recoil starter to see if sparks jump across the gap.
 - **E)** If there is no spark, replace the plug.
 - **F)** With new plug installed repeat "D" above.
 - **G)** If okay, reinstall plug and start engine according to instructions. If not consult a Servicing Dealer.
 - **H)** If engine still does not start, take it to a Servicing Dealer.
4. Is there adequate oil in the engine crankcase? This engine is equipped with a low oil shut off system. If oil levels are inadequate, the OIL-GARD® light will flash while the starter rope is pulled.

PROBLEM: The generator has no output.

1. Reset circuit breakers
2. Check cord sets and extension cords.
3. Consult Servicing Dealer.

HOMELITE PRODUCT. LIMITED WARRANTY

Homelite warrants to the original retail purchaser that this Homelite Product is free from defects in material and workmanship and agrees to repair or replace at Homelite's discretion any defective Product free of charge within these periods from the date of purchase:

- One year, if the Product is used for personal, family, or household use;
- 90 days, if the Product is used for any other purpose, such as commercial or rental use.

This warranty is not transferable and does not cover damage resulting from other than defects in material or workmanship, or damage caused by unreasonable use, including the failure to provide reasonable and necessary maintenance. In addition, this warranty does not cover general check-ups on electrical equipment, tune-ups on gasoline engines or replacement of non-defective parts (such as electrical brushes, cables, plugs, spark plugs, filters, starter ropes, etc.) that may wear and need to be replaced with reasonable use within the warranty period or which may require replacement in connection with normal maintenance. This warranty applies only to products sold within the United States of America, the District of Columbia, Canada, Mexico, the Commonwealth of Puerto Rico, the Virgin Islands, the Guamanian Canal Zone or American Samoa.

SAVE YOUR SALES SLIP

Proof of purchase in the form of your dated sales receipt, cash register slip, etc. showing the serial number and the model of your Product will be required before our dealers can perform warranty service on the Product. You must at your own expense arrange to deliver or ship the Product for warranty repairs and arrange for pickup or return of the Product after repairs have been made. This warranty does not apply to any trade accessory, engine or electric motor which is separately warranted by another manufacturer and not manufactured by Homelite.

THIS LIMITED WARRANTY IS INSTEAD OF ALL OTHER EXPRESS WARRANTIES. ANY IMPLIED WARRANTY OF FITNESS FOR A PARTICULAR PURPOSE, MERCHANTABILITY OR OTHERWISE, APPLICABLE TO THIS PRODUCT, SHALL BE LIMITED IN DURATION TO THE DURATION OF THIS LIMITED WARRANTY, HOMELITE SHALL NOT BE LIABLE FOR ANY SPECIAL, INCIDENTAL OR CONSEQUENTIAL DAMAGES.

SOME STATES DO NOT ALLOW LIMITATIONS ON HOW LONG AN IMPLIED WARRANTY LASTS, SO THE ABOVE LIMITATION MAY NOT APPLY TO YOU. SOME STATES DO NOT ALLOW THE EXCLUSION OR LIMITATION OF INCIDENTAL OR CONSEQUENTIAL DAMAGES, SO THE ABOVE LIMITATION OF LIABILITY MAY NOT APPLY TO YOU.

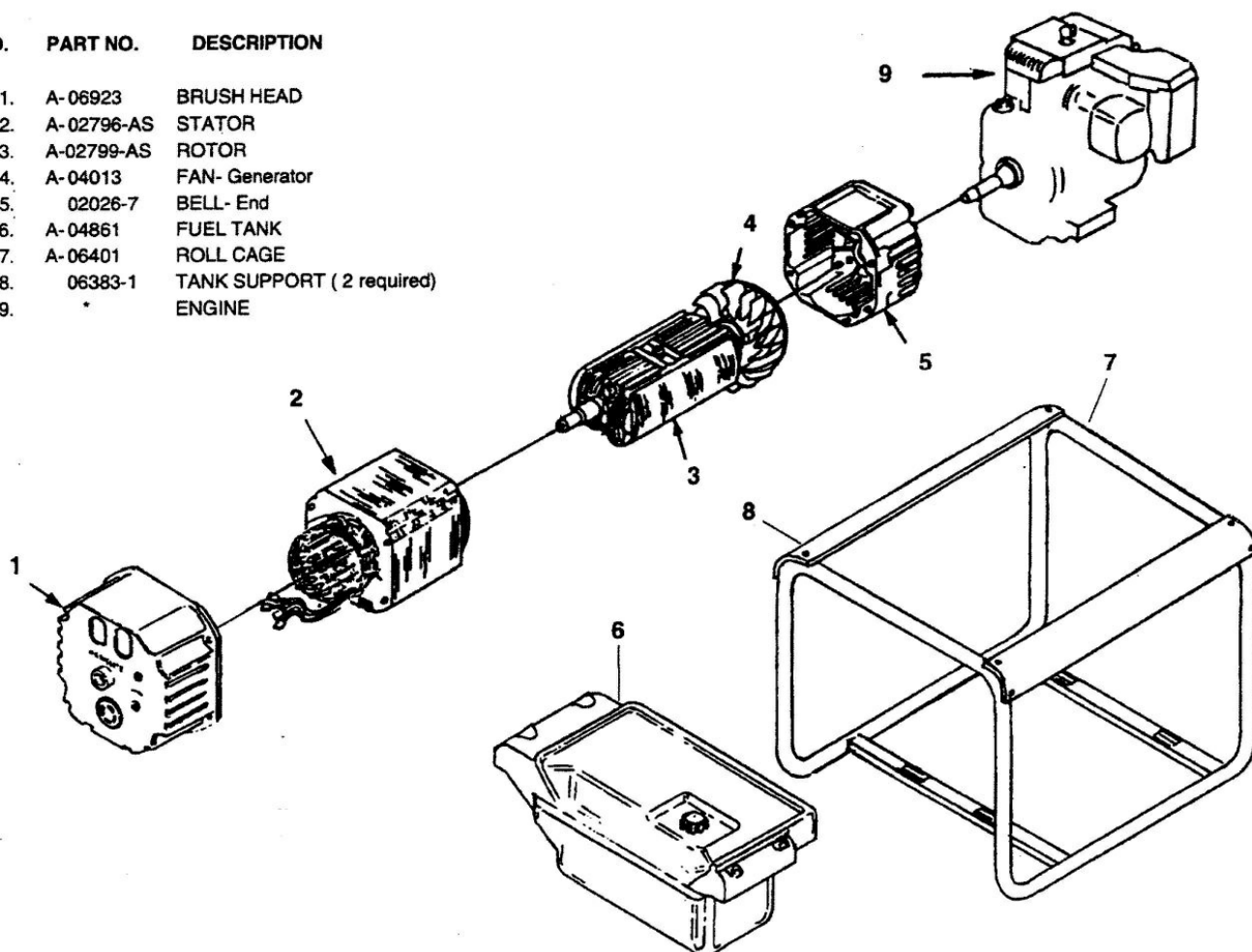
HOW TO OBTAIN WARRANTY SERVICE

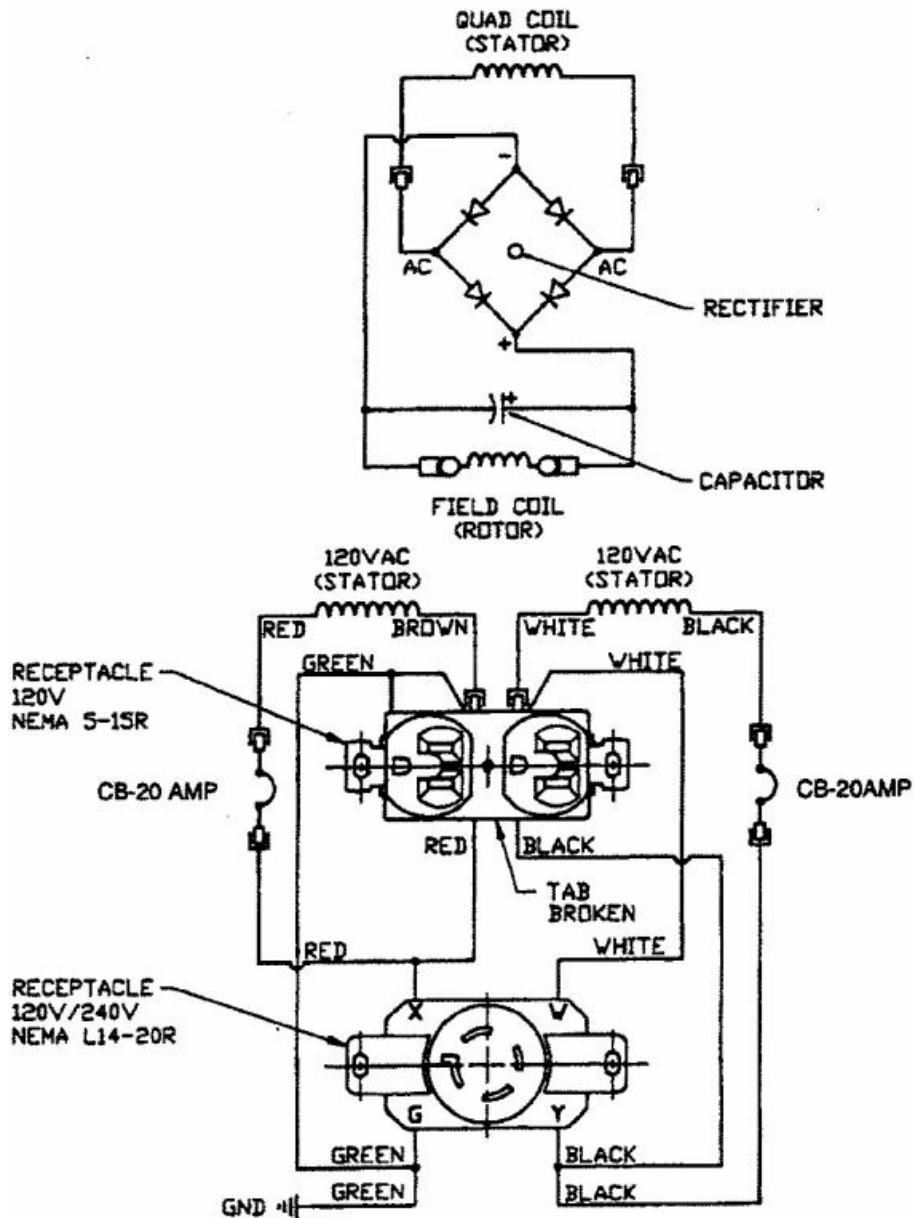
Warranty service can be obtained from a Homelite dealer authorized to make warranty repairs. If you need warranty service, check first with the Homelite dealer from whom you purchased the Product, or call the following number for the name and location of the nearest dealer providing warranty service: 1-800-242-4672 – United States, Puerto Rico, and Virgin Islands. In Canada, you may also obtain this information from our Sales Office: HOMELITE CANADA, 1850 55TH AVENUE, LACHINE, QUEBEC, CANADA H8T-305 or call 1-514-636- 5900. FOR WARRANTY SERVICE INFORMATION OUTSIDE THE USA AND CANADA, PLEASE CONTACT YOUR LOCAL HOMELITE DEALER. Homelite will not make any reimbursements for warranty service, except to Homelite dealers authorized to make warranty repairs. You must present your sales receipt when making any claim for warranty service.

This warranty gives you specific legal rights, and you may also have other rights which vary from state to state. This product is certified in Canada to comply with radio interference standards. Replace spark plug with resistor spark plug only. This warranty is given by Homelite, Post Office Box 7047, Charlotte, North Carolina 28241. An extended warranty is available for most Homelite products. Contact an authorized Homelite servicing dealer.

PRODUCT INFORMATION

NO.	PART NO.	DESCRIPTION
1.	A-06923	BRUSH HEAD
2.	A-02796-AS	STATOR
3.	A-02799-AS	ROTOR
4.	A-04013	FAN- Generator
5.	02026-7	BELL- End
6.	A-04861	FUEL TANK
7.	A-06401	ROLL CAGE
8.	06383-1	TANK SUPPORT (2 required)
9.	*	ENGINE





For Engine replacement parts locate the engine brand name, model number, and type number and consult the appropriate dealer in your area.

Documents / Resources



[Homelite LR4400 Generator \[pdf\] Owner's Manual](#)
LR4400, LR4400 Generator, Generator

References

-  [Manual-Hub.com](https://www.manual-hub.com) - Free PDF manuals!
- [User Manual](#)

Manuals+. Privacy Policy

This website is an independent publication and is neither affiliated with nor endorsed by any of the trademark owners. The "Bluetooth®" word mark and logos are registered trademarks owned by Bluetooth SIG, Inc. The "Wi-Fi®" word mark and logos are registered trademarks owned by the Wi-Fi Alliance. Any use of these marks on this website does not imply any affiliation with or endorsement.