




hOmeLabs HME010694N Nugget Ice Maker Instruction Manual

[Home](#) » [homelabs](#) » hOmeLabs HME010694N Nugget Ice Maker Instruction Manual 

Contents

- 1 hOmeLabs HME010694N Nugget Ice Maker
- 2 Product Usage Instructions
- 3 Important safety instructions
- 4 Parts Overview
- 5 Operation
- 6 Cleaning and Maintenance
- 7 Specifications
- 8 Troubleshooting
- 9 Warranty
- 10 Manufacturing Information
- 11 Documents / Resources
 - 11.1 References



hOmeLabs HME010694N Nugget Ice Maker



Specifications

- **Product:** Nugget Ice Maker
- Compact and Portable
- **SKU:** HME010694N

Product Usage Instructions

Before First Use

To prevent any internal damage, it is very important to keep the unit upright throughout its journey. Please leave it standing upright and outside the box for 24 HOURS before plugging it in.

In the event this product malfunctions, or you believe it is defective, please contact Customer Service at homelabs.com/help or help@homelabs.com and hold onto the defective product (pending further instruction). A defective product should be clearly marked or stored where it cannot be used by mistake. Failure to keep the product in its original quality from the time of receipt may impede hOmeLabs's ability to correct any legitimate problem and may limit the extent to which hOmeLabs may provide recourse.

Running the Cleaning Program

We recommend running the cleaning program prior to making ice for the first time. This cleaning process will take about 20 minutes. Please refer to Page 8 of the user manual for detailed instructions on running the cleaning program.

Table of Contents

Congratulations on bringing home your new appliance! Don't forget to register your product at homelabs.com/reg for updates, coupons, and other relevant information. Although greatly appreciated, product registration is not required to activate any warranty.

Important Safety Instructions

WARNING: SAVE THESE INSTRUCTIONS. For Household Use Only.

Parts Overview

- Metal Housing
- Control Panel
- Ice Drawer Handle
- Transparent Window
- View stored ice level
- Ice Drawer
- Water Tank
- Drip Tray
- Drainpipe
- Cooling Vents
- Hot Air Outlet
- Water Drain Cap
- Power Cord

Operation

Control Panel Indicators

- WATER
- ICE
- SHORTAGE POWER FULL
- BUTTONS
- ICE CLEAN LIGHT

Preparing Before Use

1. Remove the exterior and interior packaging and check if all the accessories are included. If any part is missing, please contact Customer Service.
2. Clean the interior with warm water, diluted detergent, and a soft cloth. See the Cleaning and Maintenance section on Page 11 of the user manual for detailed instructions.
3. Place your Ice Maker on a dry, flat, and sturdy surface. Leave a clearance of 6 inches (15 cm) on each side of the Ice Maker for proper ventilation.
4. Allow 24 hours for the refrigerant fluid to settle down before plugging in your Ice Maker.
5. Discard the first few batches of ice when using this appliance for the first time or after an extended period of time.
6. The power plug must be easily accessible to prevent damage to your appliance top's appearance.

Filling the Water Tank

The Water Tank is located under the Ice Drawer.

1. Remove the Ice Drawer and pour 0.58 gallon (2.2 liters) of potable water into the Water Tank.
2. Slide in the Ice Drawer.

3. Put the Drip Tray in position.

Starting the Cleaning Program

It is highly recommended to run the cleaning program before first use (or when the unit has been unused for an extended period). This cleaning process will take about 20 minutes. Refer to the user manual for detailed instructions on starting the cleaning program.

FAQ

- **Q: Do I need to register my product to activate the warranty?**
 - A: Product registration is not required to activate any warranty, but it is recommended for updates, coupons, and other relevant information.
- **Q: How long does the cleaning program take?**
 - A: The cleaning program takes about 20 minutes.

Nugget Ice Maker

Compact and Portable

SKU: HME010694N

Thank you for purchasing our appliance. Please be sure to read the entirety of this user manual carefully prior to using this appliance. If you have any questions regarding the use of this product, please contact Customer Service at homelabs.com/help or help@homelabs.com.

Before First Use

To prevent any internal damage, it is very important to keep the unit upright throughout its journey. Please leave it standing upright and outside the box for 24 HOURS before plugging it in.

In the event this product malfunctions, or you believe it is defective, please contact Customer Service at homelabs.com/help or help@homelabs.com and hold onto the defective product (pending further instruction). A defective product should be clearly marked or stored where it cannot be used by mistake. Failure to keep the product in its original quality from the time of receipt may impede hOmeLabs's ability to correct any legitimate problem and may limit the extent to which hOmeLabs may provide recourse.

Before First Use

We recommend running the cleaning program (See > Page 8) prior to making ice for the first time.

- **Congratulations** on bringing home your new appliance!
- Don't forget to register your product at homelabs.com/reg for updates, coupons, and other relevant information.
- Although greatly appreciated, product registration is not required to activate any warranty.

Important safety instructions

When using electrical appliances, basic safety precautions should be followed to reduce the risk of fire, electrical shock, and injury to persons or property. Read all instructions before using this appliance.

- Do not use appliance for anything other than its intended use.
- Do not operate this or any other appliance with a damaged cord. Leave a space of at least 6 inches around the appliance.

- If the supply cord is damaged, it must be replaced by the manufacturer or a similarly qualified person in order to avoid potential safety hazards.
- This appliance has to be positioned so that the plug is accessible after installation or assembly.
- Connect to properly grounded outlets only. No other appliance should be plugged into the same outlet. Be sure that the plug is fully inserted into the receptacle. Do not run the Power Cord over carpeting or other heat insulators.
- Do not cover the cord. Keep the cord away from high traffic areas. Do not submerge in water.
- We do not recommend the use of an extension cord as it may overheat and become a fire hazard. If you have to use an extension cord, use No. 14 AWG minimum size and rated no less than 1875 Watts.
- Unplug the appliance before any cleaning, repairing or servicing. Always grasp the power plug to remove it from the wall outlet. Do not pull on the power cord itself.
- Exercise caution and provide supervision when this appliance is used in the presence of children.
- Do not use the appliance outdoors. Place the appliance away from direct sunlight.
- Only use water to make ice.
- Do not clean the appliance with flammable fluids. The fumes can create a fire hazard or cause an explosion.
- Do not let this appliance tip over.
- If the appliance is brought inside from the cold, please let it warm to room temperature before plugging it in.
- To avoid hazards due to instability, the appliance must be placed on a flat surface. This appliance is not intended for use by persons (including children) with reduced physical, sensory or mental capabilities, or lack of experience and knowledge, unless they have been given supervision or instruction concerning use of the appliance by a person responsible for their safety. Children should be supervised to ensure that they do not play with the appliance.

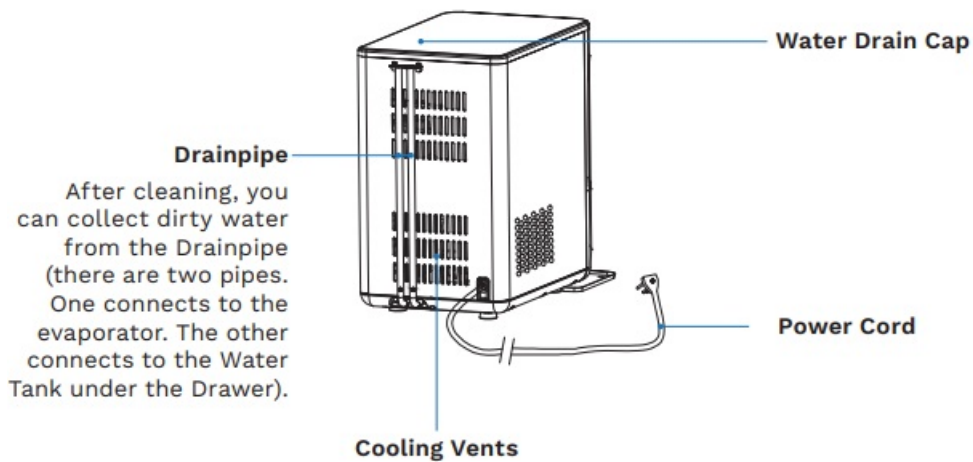
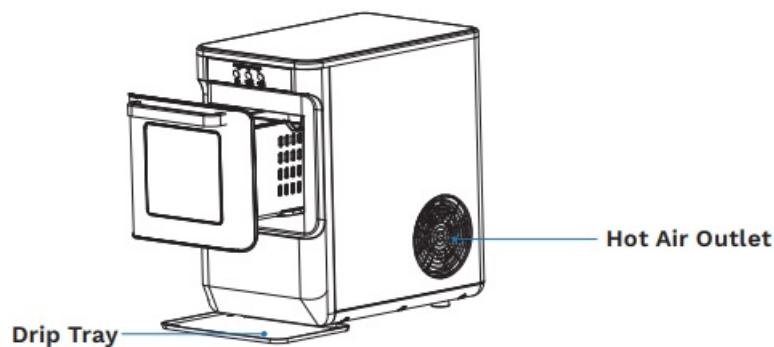
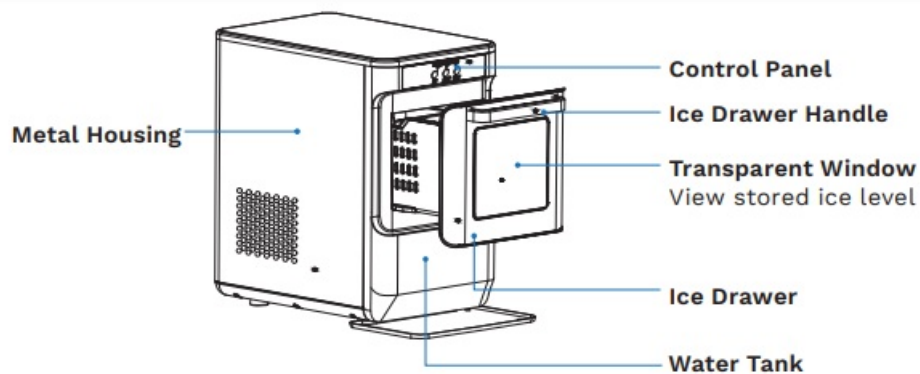
WARNING

- This appliance should be properly grounded for your safety. The Power Cord of this appliance is equipped with a grounding plug which mates with standard grounding wall outlets to minimize the possibility of electrical shock.
- Improper use of the grounded plug can increase the risk of electrical shock.
- If the Power Cord is damaged, please contact Customer Service.
- Plug your appliance into an exclusive, properly installed, grounding wall outlet.
- Do not damage the grounding means of the plug under any circumstances. Any questions concerning power and/or grounding should be directed toward a certified electrician.
- This appliance requires a standard 110–120 V, 60 Hz electrical outlet with good grounding means.

SAVE THESE INSTRUCTIONS

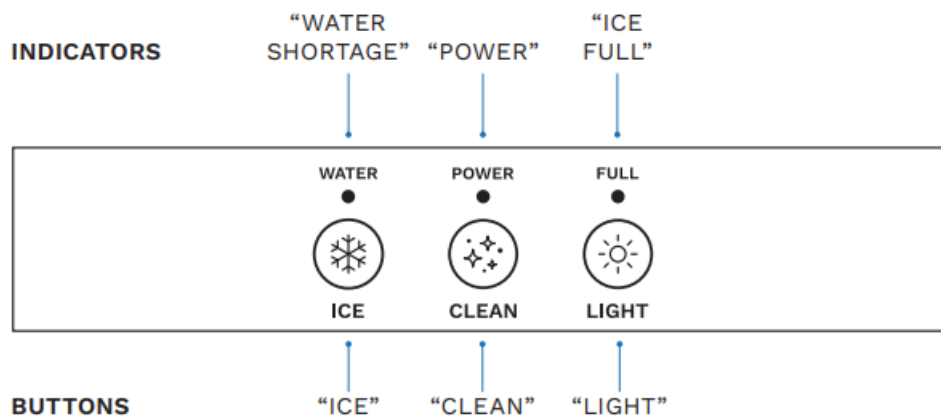
For Household Use Only

Parts Overview



Operation

CONTROL PANEL



PREPARING BEFORE USE

1. Remove the exterior and interior packaging and check if all the accessories are included. If any part is missing, please contact Customer Service.
2. Clean the interior with warm water, diluted detergent, and a soft cloth. See the “Cleaning and Maintenance” > Page 11.
3. Place your Ice Maker on a dry, flat, and sturdy surface. Leave a clearance of 6 inches (15 cm) on each side of the Ice Maker for proper ventilation.
4. Allow 24 hours for the refrigerant fluid to settle down before plugging in your Ice Maker.
5. Discard the first few batches of ice when using this appliance for the first time or after an extended period of time.
6. The power plug must be easily accessible.

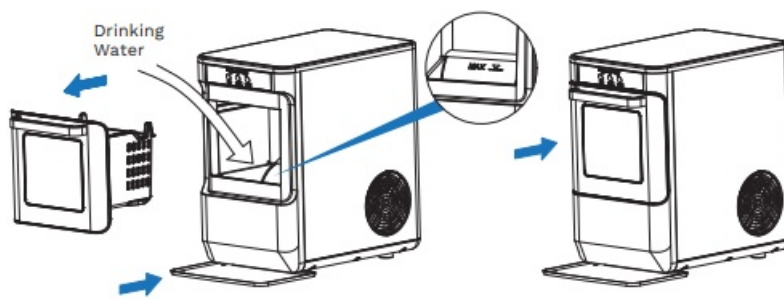
NOTE

- The Ice Maker should be far from direct sunlight and other sources of heat (e.g.: stove, furnace, or radiator).
- Some types of under-cabinet lamps can be hot enough to cause damage to your appliance top's appearance.

FILLING THE WATER TANK

The Water Tank is under the Ice Drawer.

1. Remove the Ice Drawer and pour 0.58 gallon (2.2 liters) potable water into the Water Tank. Slide in the Ice Drawer.
2. Put the Drip Tray in position.



IMPORTANT NOTE

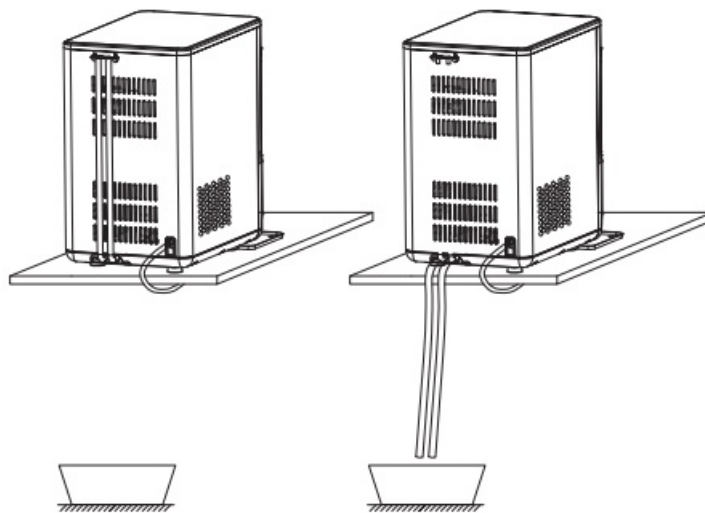
- Use filtered water for better tasting ice and less scale buildup in the Ice Maker.
- For consistently clean and fresh ice, change the water in the tank every 24 hours. Before storing or non-use for an extended period of time, drain the water from the tank and wipe it dry.
- To avoid damage to this Ice Maker, fill the Water Tank with room temperature or cooler water. Do not use hot or boiling water.
- Monitor the water level in the tank and replenish the water periodically. When the Water Tank has insufficient water, the “Water Shortage” indicator will light up and the unit enters standby mode. After replenishing water, touch the “ICE” button twice to start the ice making. If you prefer, wait 15 minutes, the Ice Maker will resume to work automatically.

STARTING THE CLEANING PROGRAM

It is highly recommended to run the cleaning program before first use (or when the unit has been unused for an

extended period). This cleaning process will take about 20 minutes.

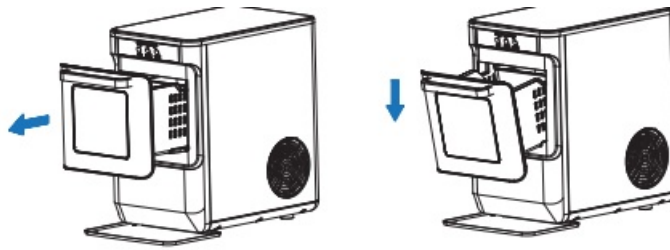
1. Plug in the Power Cord. The "POWER" indicator will light up.
2. Check the Drainpipe behind the unit. Ensure the Water Drain Cap is inserted into the Drainpipe or the appliance will not work properly.
3. Touch the "CLEAN" button. "CLEAN" indicator will light up and flash after 5 seconds.
 - It will take at least 20 minutes to run the cleaning program. To stop the program, just touch the "CLEAN" button again.
4. After the cleaning program is complete, move the unit to the edge of the surface while making sure that the appliance is stable. Place a bowl or container under the appliance. Release the Drainpipe from the back of the unit and pull out the plug from the Drainpipe. This will cause the water in the tank under the Drawer and the evaporator to drain into the water container. Reinsert the Drainpipe plug and replace the Drainpipe.



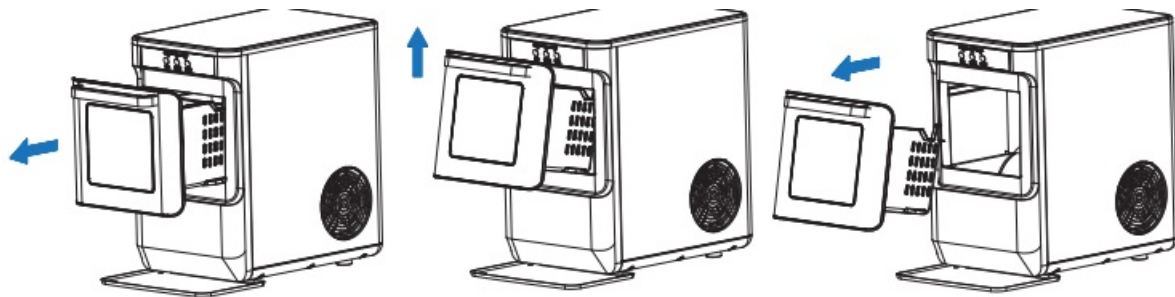
HOW TO MAKE AND USE ICE

1. Before starting, check the Drainpipe behind the Ice Maker. Ensure the Water Drain Cap is properly inserted into the Drainpipe.
2. Touch the "ICE" button. The "ICE" indicator will light up. After 5 seconds, the unit will start flashing and begin making ice. If you touch the "ICE" button again, the unit will stop making ice. You can check the ice quantity in the Ice Drawer through the Transparent Window.
3. When the Ice Drawer is full, the "ICE FULL" indicator will light up and the unit will stop making ice automatically.
4. While the Ice Maker is on, check the water level periodically. When the "WATER SHORTAGE" indicator lights up, fill the Water Tank.
5. **To Open the Ice Drawer:** Hold the handle gently and pull it out horizontally until the back of the Drawer contacts the front panel, then gently push it down. The Drawer will hang at a slight angle.
6. **To Close the Ice Drawer:** Reverse the process. Hold the handle and place the Drawer horizontally, then gently push it in place.

•



To Remove / Reload the Drawer: Hold the handle gently then pull the Drawer outwards horizontally until the back of the Drawer contacts the front panel. Gently lift the Drawer up at an angle (as shown) and pull it out. To reload the Drawer, reverse the steps. Tilt the Drawer in the same direction at an angle (as shown). Put the back of the Drawer into the unit's front panel, slowly flatten the Drawer, then gently push it in place.



LIGHT ON/OFF

Touch the "LIGHT" button to illuminate the Ice Drawer interior. To turn off the light, touch the "LIGHT" button again.

NOTE

- Always use the scoop to remove the ice from the machine. Do not use your hands to remove the ice to avoid contamination.
- To maintain a clean and sanitary unit, do not return ice into the Ice Maker once it has been removed.

ATTENTION

Empty the Drawer and Water Tank before turning the unit off, otherwise the water may overflow.

COMMON OPERATING NOISES

Your new Ice Maker may make unfamiliar sounds. Most of these sounds are normal. Hard surfaces like the floor, walls, and countertops can amplify these sounds.

Here are the sounds you may hear and their potential source

- **WHIR** – When the appliance is first turned on, you may notice the condenser fan spinning.
- **BUZZ** – When the water pump first turns on, it may be dry and slightly noisy. Once it is filled with water, the noise reduces significantly.
- **RATTLE** – Rattling noises may be produced from the flow of the refrigerant.
 - These noises should reduce significantly once the refrigerant system has stabilized.
- **GURGLE** – When the refrigerant system shuts off, there may be a brief gurgle as the refrigerant stops flowing.
- **HUM** – The compressor is a motor. It produces a low hum when running.
- **CLICK** – As nugget ice is produced, it drops into the Ice Drawer. You will hear the loudest sounds when the first nuggets impact with the empty ice bin. As the bin fills, this noise reduces significantly.

Cleaning and Maintenance

- To keep your ice tasting fresh and your Ice Maker looking great, clean your Ice Maker regularly.
- Unplug the unit before cleaning or maintenance.

Ice Drawer

Remove the Ice Drawer. Clean the interior with diluted detergent, warm water, and a soft cloth.

Ice Scoop

Clean regularly with warm, soapy water. Dry the scoop before use.

Exterior and Interior

- Remove the Water Drain Cap on the back. Drain out any water in the Drainpipes.
- Use room temperature water and mild detergent with a soft cloth to clean the interior of the Ice Maker. Rinse with water. Run 3 cycles of ice with new water and discard the ice each time.
- Dry the interior and exterior with a soft cloth.

NOTE: Do not immerse Ice Maker.

Cooling Fan

Regularly check the cooling fan for dirt or dust buildup. With the power OFF, use a soft, dry brush to gently remove buildup from the outside of the fan cover.

Cooling Vents

- Regularly check the Cooling Vents for dirt or dust buildup.
- With the power OFF, use a soft, dry brush to gently remove buildup from the vents.

Collect Dirty Water

After clearing the Drainpipes, you can collect dirty water for other uses (it is non-potable). (See visual in Parts Overview > Page 6)

1. Remove the Drain Cap from the Drainpipe on the back of the appliance.
2. To collect dirty water, empty the Water Tank under the Ice Drawer.
3. Reinsert the Drain Cap and then the Drainpipe.
4. Wash the Water Tank and reinsert it.

Storage Requirements

If the unit will remain unused for an extended period, dump any remaining ice, and drain all the water from the Water Tank. Completely dry the Ice Drawer and Water Tank. Once dry, reinsert them into the appliance. Store the Ice Maker upright in a dry, well-ventilated location.

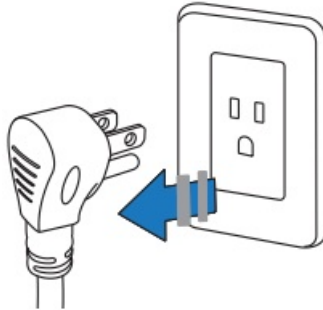
Specifications

- **Vesicant:** C₅H₁₀

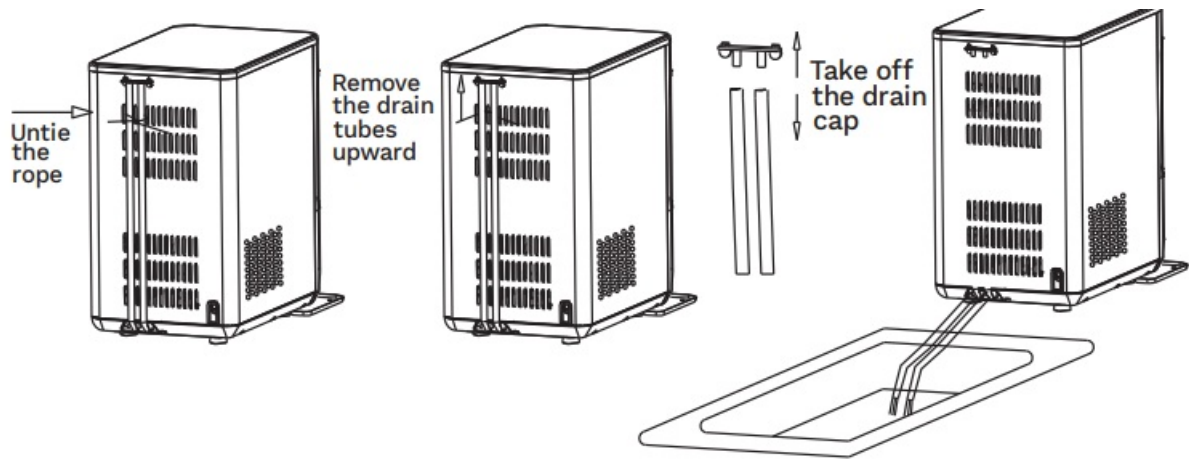
- **Voltage/Current:** 115 V~ 60 Hz, 2.7 A
- **Net Weight:** 33.73 lb
- **Dimensions:** L 16.1 × W 9.8 × H 16.5 in

Daily Cleaning

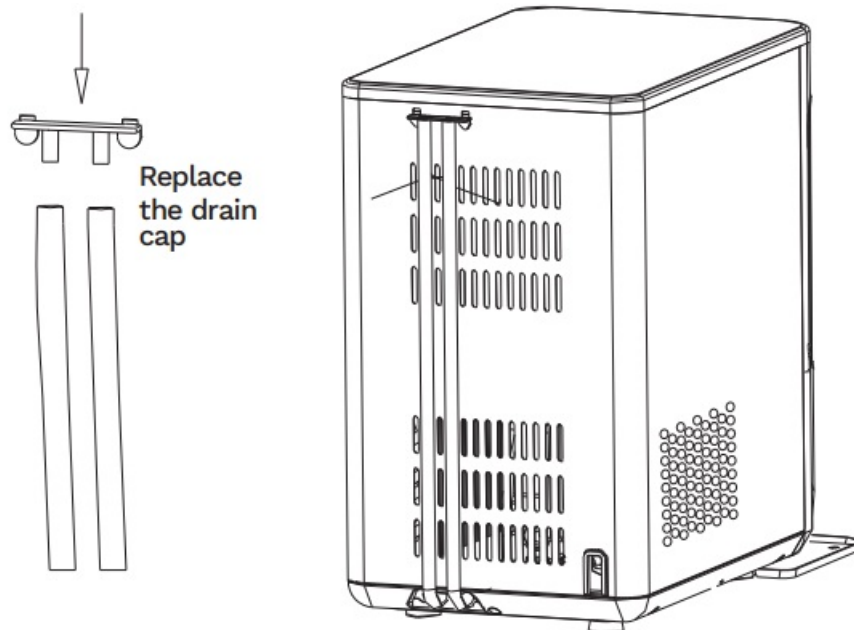
1. Unplug the Nugget Ice Maker.



2. Take off the drain cap and drain out the water to a sink. See the figure below.



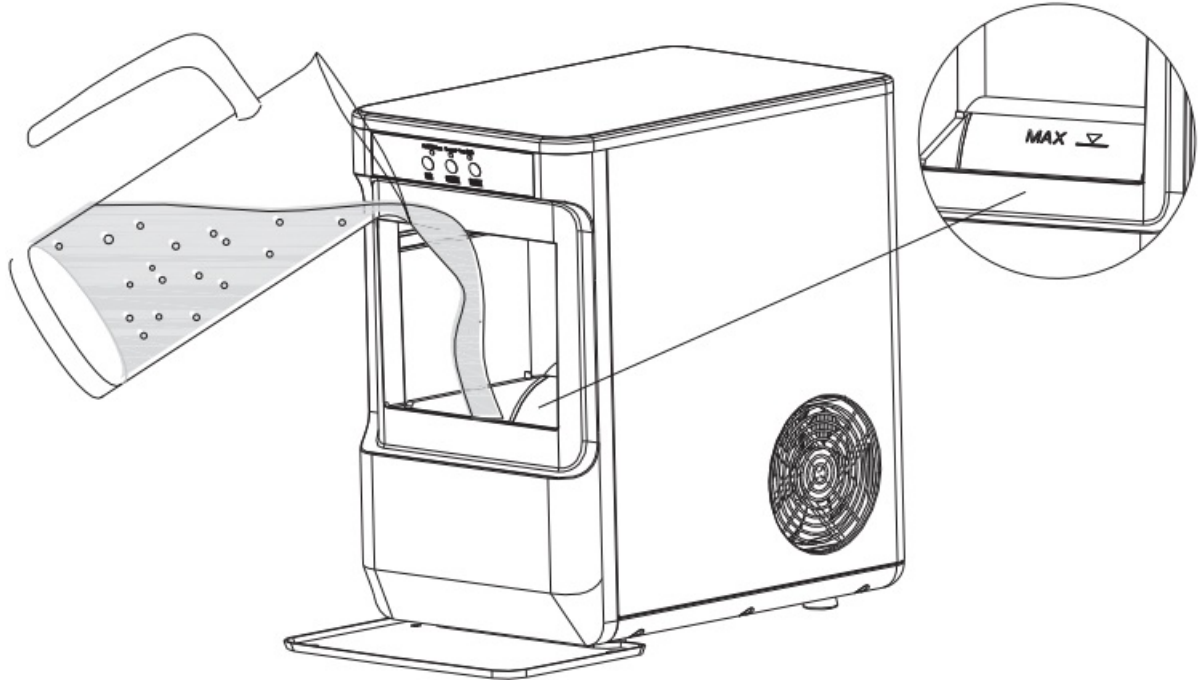
3. Replace the drain cap. See the figure below.



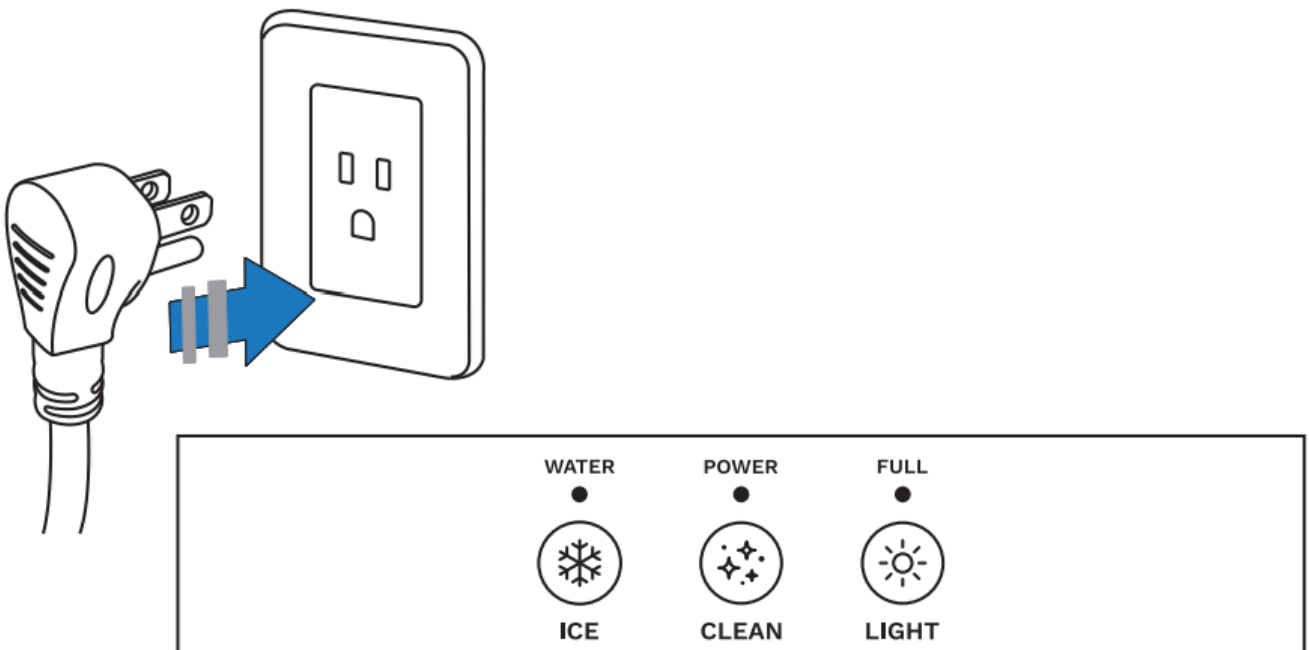
4. Mix cleaning solution by diluting one teaspoon of household bleach with five cups of water for daily cleaning.



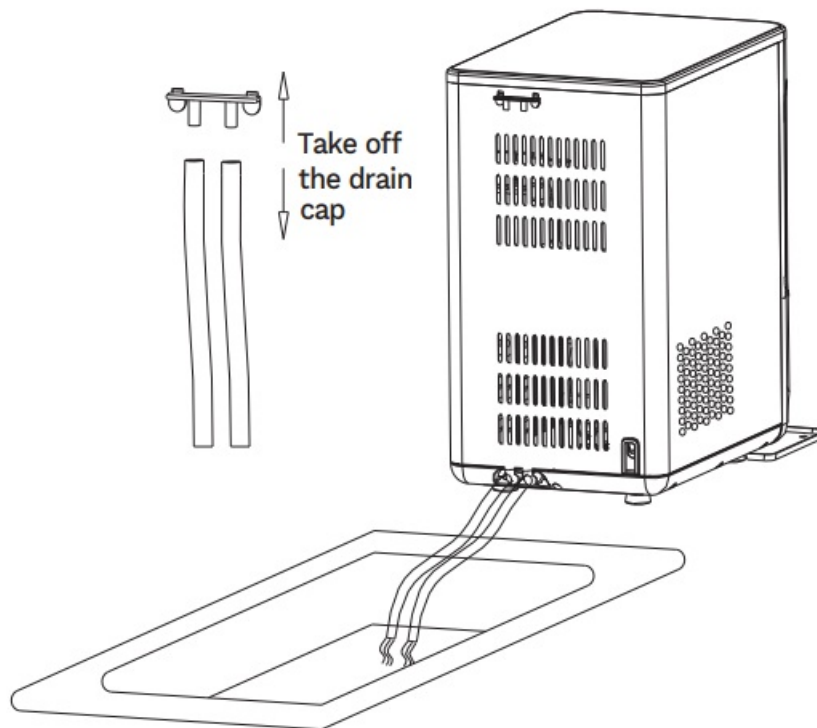
5. Pour the solution into the water reservoir, up to the “MAX” water level. See the figure below.



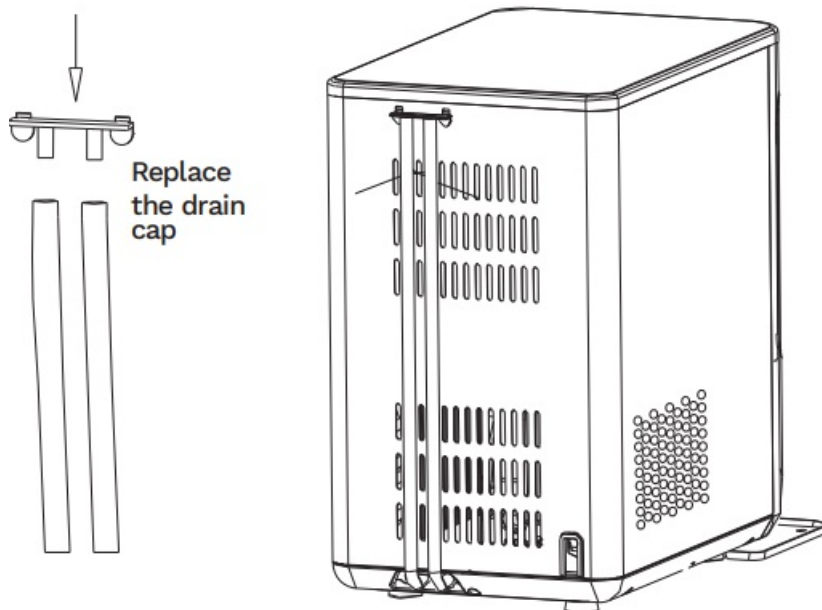
6. Plug in the Nugget Ice Maker and press the “Clean” button to initiate the cleaning process (20 mins). See the figure below.



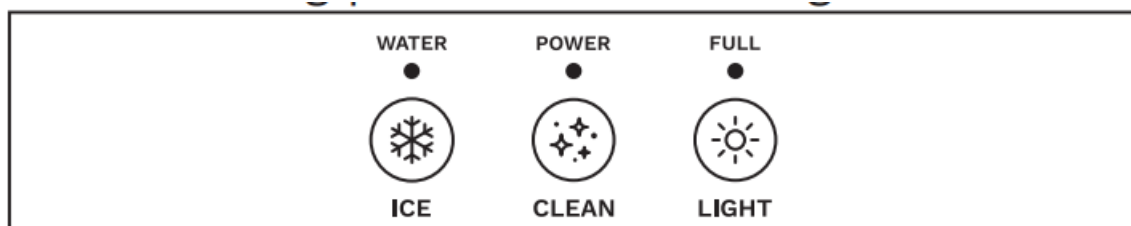
7. When the “cleaning” indicator lights turns off, take off the drain cap and drain out the water to a sink.



8. Repeat steps 5 through 7 with fresh water for two more cycles to rinse the inside.
9. Replace the drain cap. See the figure below.

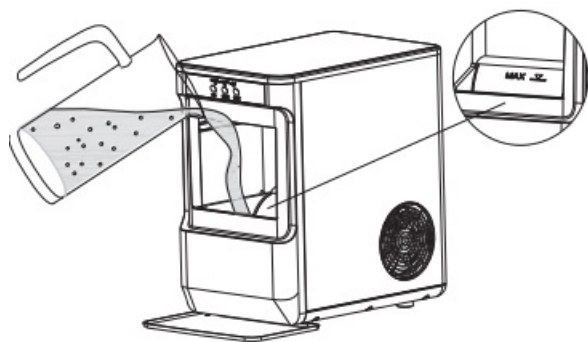


10. When completed, fill the unit with fresh water and press the “Ice” button to start ice making process. See the figure below.

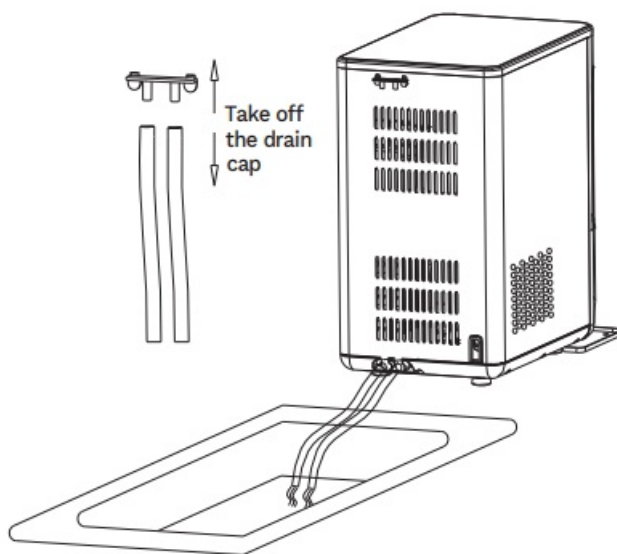


Monthly Cleaning

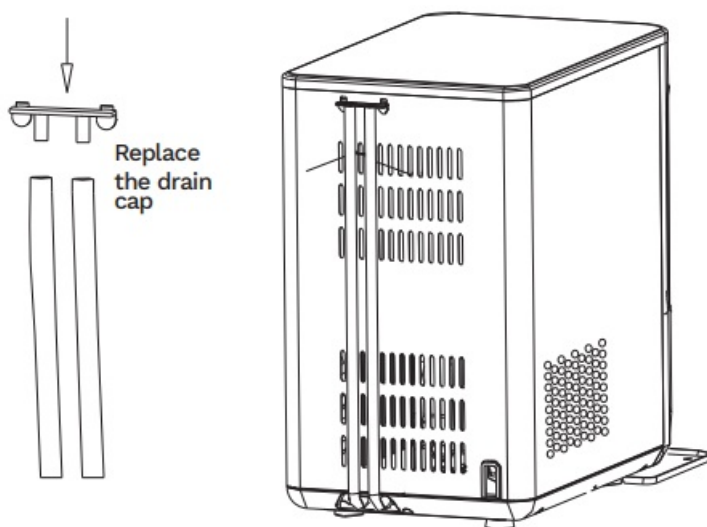
1. To remove mineral deposits, use white vinegar instead of bleach-water solution used for daily cleaning.
2. Fill the water reservoir halfway with distilled white vinegar.



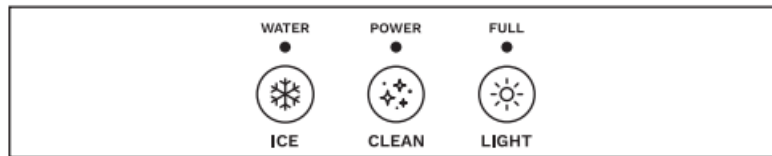
3. Plug in the Nugget Ice Maker and press the “Clean” button to initiate the cleaning process. Let the cleaning process run for approximately five (5) minutes. After 5 minutes, unplug the appliance and leave the white vinegar in the unit for over 12 hours.
4. After 12 h period take off the drain cap and drain the vinegar in to a sink.



5. Repeat steps 5 through 7 with fresh water for two more cycles to rinse the inside.
6. Replace the drain cap. See the figure below.



7. When completed, fill the unit with fresh water and press the “Ice” button to start ice making process. See the figure below.



Troubleshooting

PROBLEM	POSSIBLE CAUSE	SOLUTION
No ice cubes inside	There is an obstruction inside the appliance	Remove the obstruction inside, or clean the interior surface of the Drawer. Unplug the unit and restart it.
“LIGHT” and “ICE” icons flashing	The ambient temperature or water temperature in the inner tank is too high	Run the Ice Maker below 90°F and pour colder water into the tank.
	Refrigerant liquid leakage	Touch the “ICE” button twice to restart the ice making program then wait for 50 minutes. If this problem reoccurs, contact Customer Service.
	Cover motor is broken	
	The cooling system pipe is blocked	
Slow ice production	Hot Air Outlet has been blocked	Hot Air Outlet must be guaranteed to have more than 5.9 inches of clearance for ventilation.
	Water temperature in inner tank is too high	Water temperature should be between 45–90°F.
	Malfunctioning refrigeration system	Contact Customer Service.
Water leakage	Drain Cap is not in place	Put the Drain Cap in place.
	Loose pipe joint	Contact Customer Service.
	The seal has reached the end of its service life	Contact Customer Service.

Mold	Various causes	<ul style="list-style-type: none"> • If you notice mold or other residue buildup on the Ice Maker, turn the unit off then give it a thorough cleaning. • Use room temperature water and mild detergent with a soft cloth to clean all interior surfaces, rinse with water, then run 3 cycles of ice making with new water each time, discarding the ice. • Ideally, use a professional ice machine descaler and sanitizing solution, while following the manufacturer's specific instructions for use. • If the water, scoop, ice machine, and immediate environment are kept clean and hygienic, mold formation should be avoided.
The water indicator flashes when the water tank is filled	The Ice Maker is started before being filled with water	Touch the "ICE" button twice to restart the appliance.

Warranty

hOmeLabs offers a limited one-year warranty ("warranty period") on all of our products purchased new and unused from hOmeLabs, LLC or an authorized reseller, with an original proof of purchase and where a defect has arisen, wholly or substantially, as a result of faulty manufacturing, parts, or workmanship during the one-year warranty period. The warranty does not apply where damage is caused by other factors, including, but without limitation to:

- normal wear and tear;
- abuse, mishandling, accident, or failure to follow operating instructions;
- exposure to liquid or infiltration of foreign particles;
- servicing or modifications of the product other than by hOmeLabs;
- commercial or non-household use.

The hOmeLabs warranty covers all costs related to restoring the proven defective product through repair or replacement of any defective part and necessary labor so that it conforms to its original specifications. A replacement product may be provided instead of repairing a defective product. hOmeLabs's exclusive obligation under this warranty is limited to such repair or replacement.

A receipt indicating the purchase date is required for any claim, so please keep all receipts in a safe place. We recommend that you register your product on our **website: homelabs.com/reg**. Although greatly appreciated, the product registration is not required to activate any warranty and product registration does not eliminate the need for the original proof of purchase. The warranty becomes void if attempts at repair are made by non-authorized third parties and/or if spare parts, other than those provided by hOmeLabs, are used. You may also arrange for service after the warranty expires at an additional cost.

These are our general terms for warranty service, but we always urge our customers to reach out to us with any issue, regardless of warranty terms. If you have an issue with a hOmeLabs product, please contact Customer Service at homelabs.com/help or help@homelabs.com.

This warranty gives you specific legal rights, and you may have other legal rights which vary from state to state,

province to province, or country to country. The customer may assert any such rights at their sole discretion.

Manufacturing Information

This manual covers all items with these model numbers

- HME010694N
- **SKU:** HME010694N
- **Rated Voltage/Frequency:** 115 V~ 60 Hz

WARNING

Keep all plastic bags away from children.

Contact Us

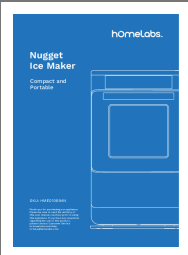
- **CHAT WITH US** homelabs.com/help
- **EMAIL US** help@homelabs.com

For Household Use Only


Distributed by hOmeLabs™, LLC 350 Springfield Avenue, Suite #200, Summit, NJ 07901

- help@homelabs.com
- homelabs.com/help
- All rights reserved, hOmeLabs™.
- Made in China.

Documents / Resources

	<p>hOmeLabs HME010694N Nugget Ice Maker [pdf] Instruction Manual HME010694N Nugget Ice Maker, HME010694N, Nugget Ice Maker, Ice Maker, Maker</p>
---	--

References

-  [Support – hOmeLabs](#)
- [User Manual](#)