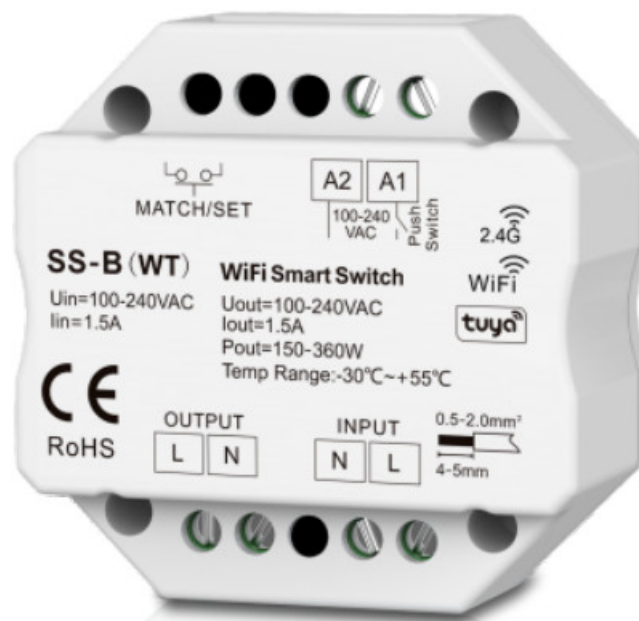


## HOMECLLOUD SK-SSB WiFi and RF Smart AC Switch User Manual

[Home](#) » [HOMECLLOUD](#) » HOMECLLOUD SK-SSB WiFi and RF Smart AC Switch User Manual 



### SK-SSB WiFi and RF Smart AC Switch User Manual



CE RoHS emc LVD

Homcloud APP cloud control/Voice control/RF AC Switch/Push on off/Wall junction box mounting

## Contents

### [1 Features](#)

### [2 Technical Parameters](#)

### [3 Mechanical Structures and Installations](#)

### [4 System wiring](#)

### [5 Homcloud App Download and registration](#)

### [6 Documents / Resources](#)

### [7 Related Posts](#)

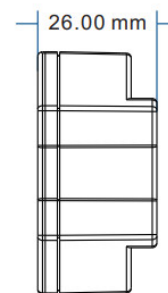
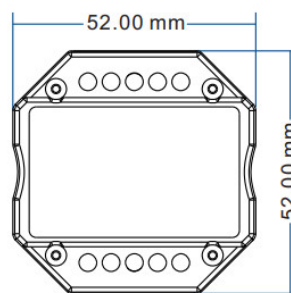
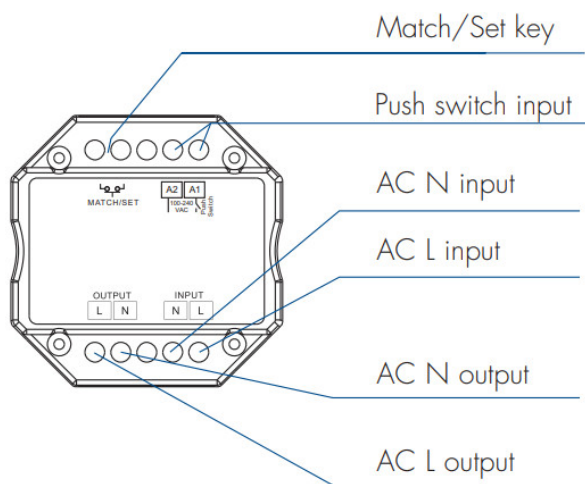
## Features

- WiFi + RF + AC push smart switch, without dimming function.
- To switch single color LED lamps, traditional incandescent and halogen lights.
- Homcloud/Smart Life APP cloud control, support on/off, delay turn on/off light and timer run function.
- Voice control, support Amazon&Google smart speaker.
- Compatibility with RF 2.4G dimming remote control.
- Each module /controller can also work as a WiFi-RF converter, then use Homcloud/Smart Life APP to control one or more RF switches or controllers synchronously.
- Connect with external push switch optional.
- Easy to be placed in a standard wall junction box behind a push switch.
- Overheat / Overload protection, recover automatically.

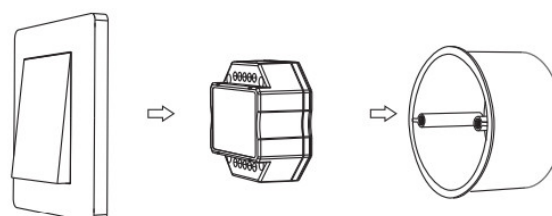
## Technical Parameters

<b>Input and Output</b>	
Input voltage	AC100-240V
Output voltage	AC100-240V
Output current	Max 1.5A
Output power	150-360W
Input signal	Tuya APP + RF + Push switch
RF Control distance	30m(Barrier-free space)
<b>Environment</b>	
Operation temperature	Ta: -30 O C ~ +55 O C
Case temperature (Max.)	T c: +85 C
IP rating	IP20
<b>Safety and EMC</b>	
EMC standard (EMC)	ETSI EN 301 489-1 V2.2.3 ETSI EN 301 489-17 V3.2.4
Safety standard(LVD)	EN 62368-1:2020+A11:2020
Radio Equipment(RED)	ETSI EN 300 328 V2.2.2
Certification	CE,EMC,LVD,RED
<b>Emission</b>	
Max Transmitting power	<20dBm
<b>Weight</b>	
Gross weight	0.041kg
Net weight	0.051kg

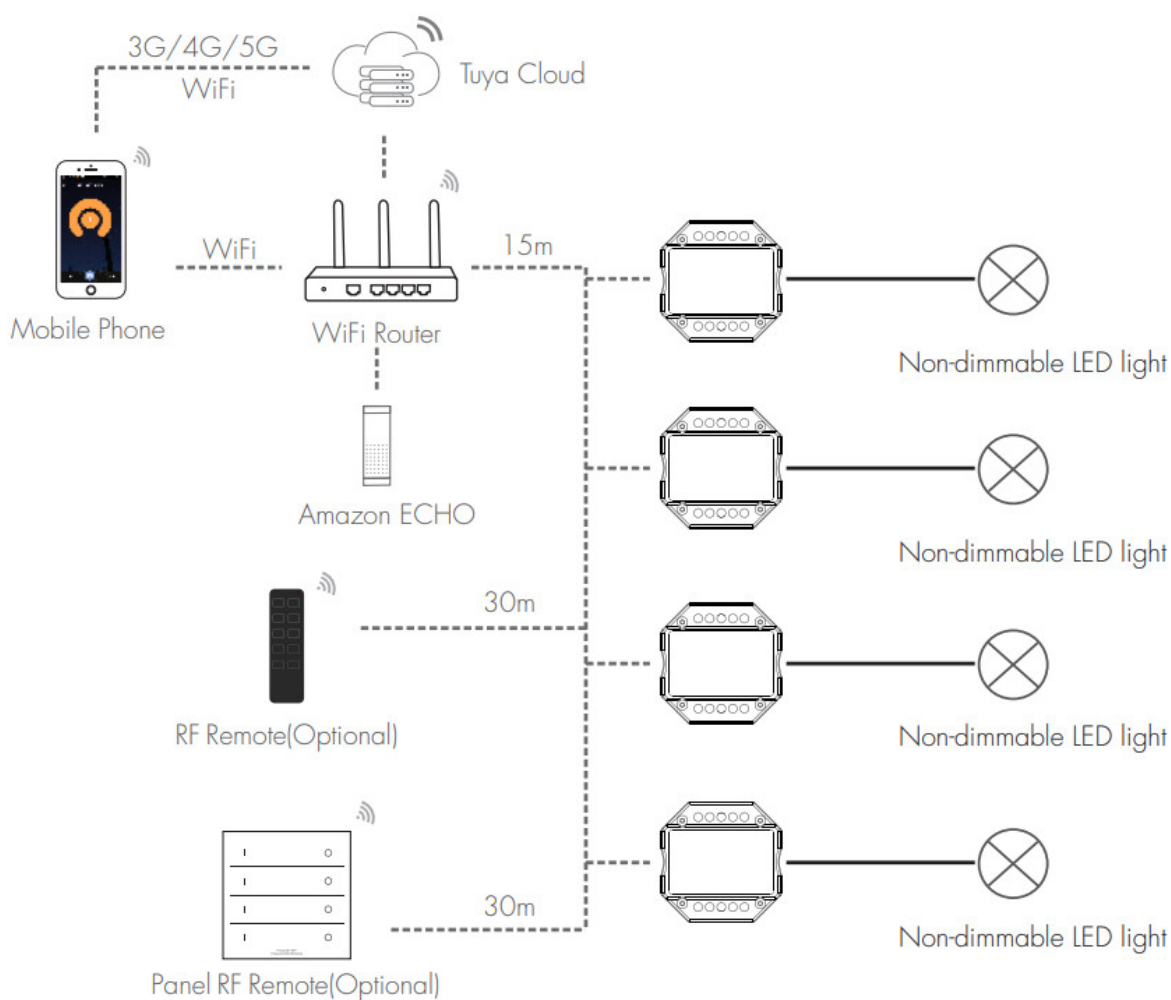
## Mechanical Structures and Installations



Typical Wall Junction Box Mounting



## System wiring



**Wired connection**

**Wireless connection**

**Note**

1. The above distance is measured in a spacious (no obstacle) environment, Please refer to the actual test

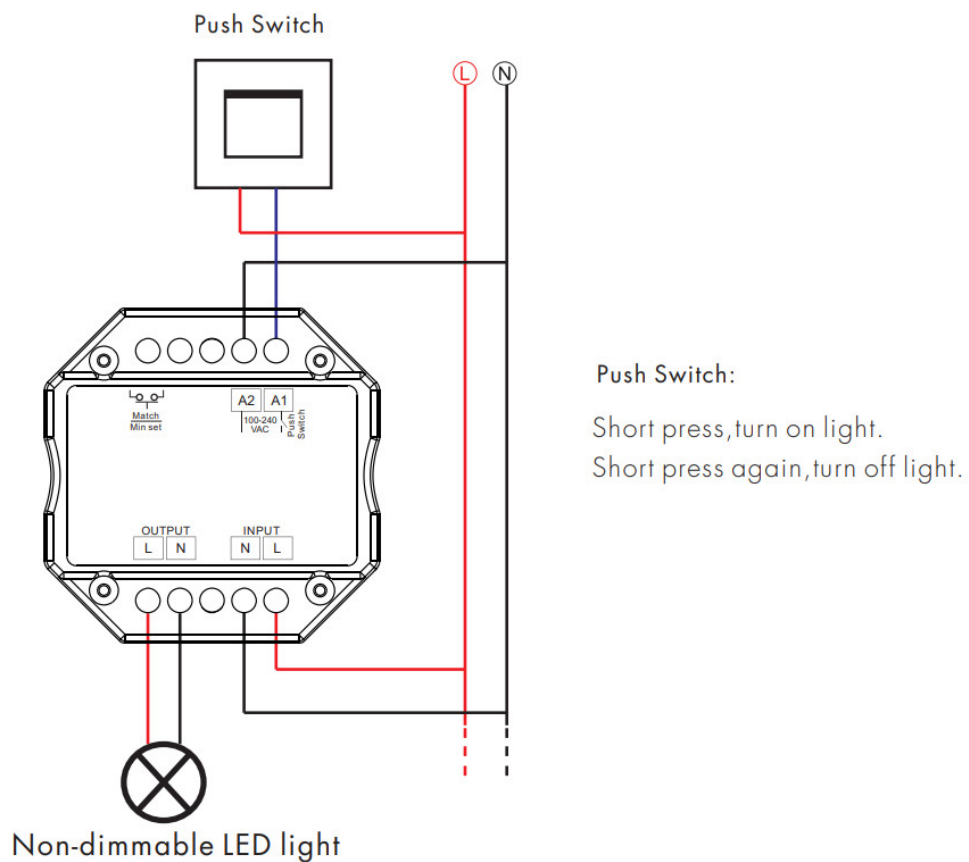
distance before installation.

2. Please check if the WiFi router net is in the 2.4G band, the 5G band is not available, and do not hide your router network.
3. Please keep the distance between wifi devices and router close, and check the WiFi signals.

### Wiring diagram

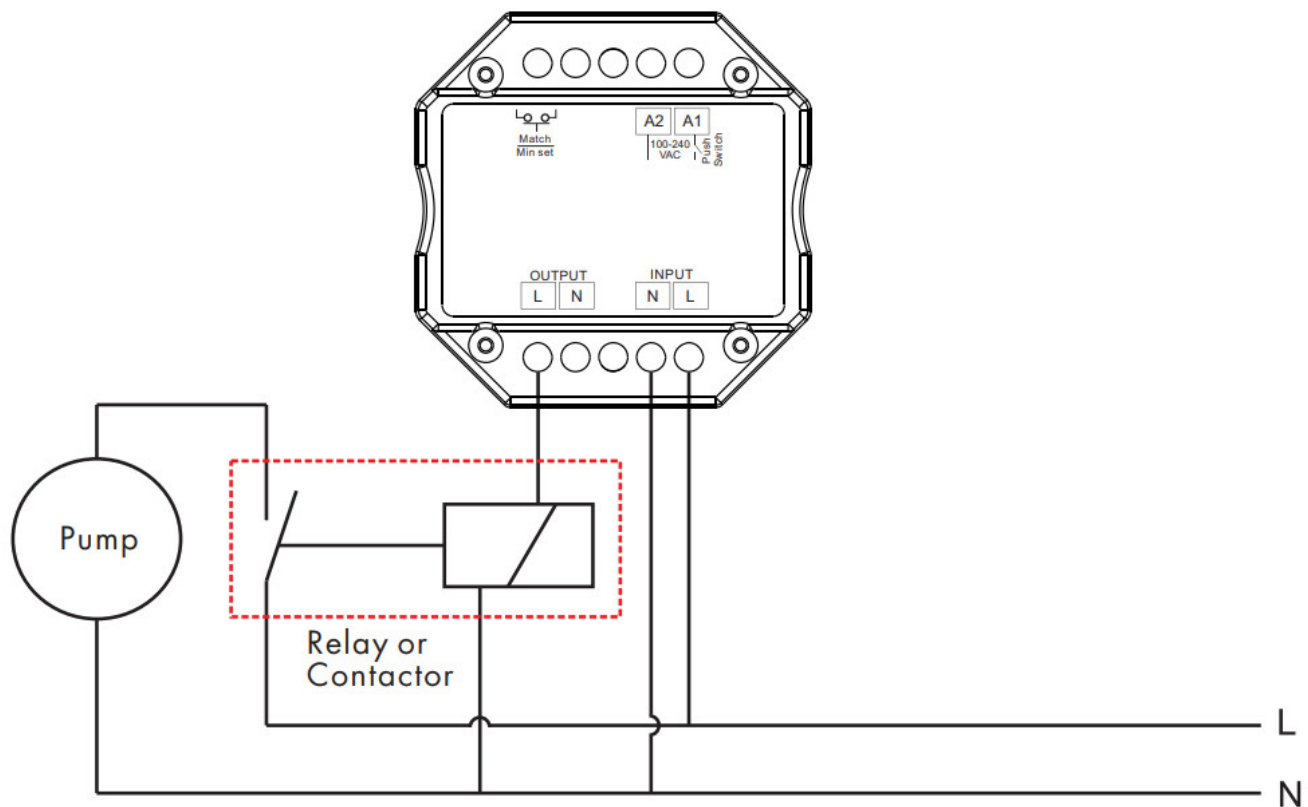
**Caution:** Please carefully ensure all wire connections and polarities are correct and secure before applying power, otherwise this controller will be damaged.

- Please contact a professional technician to install the product according to the drawings and instructions.
- Keep out of the reach of children and away from water, dump or a wet environment.
- Check the ratings given in the instructions and on the product to make sure it is suitable for your application.
- The installer must be a trained experienced service technician or electrician.
- Do not disassemble open or repair the product.



### Note:

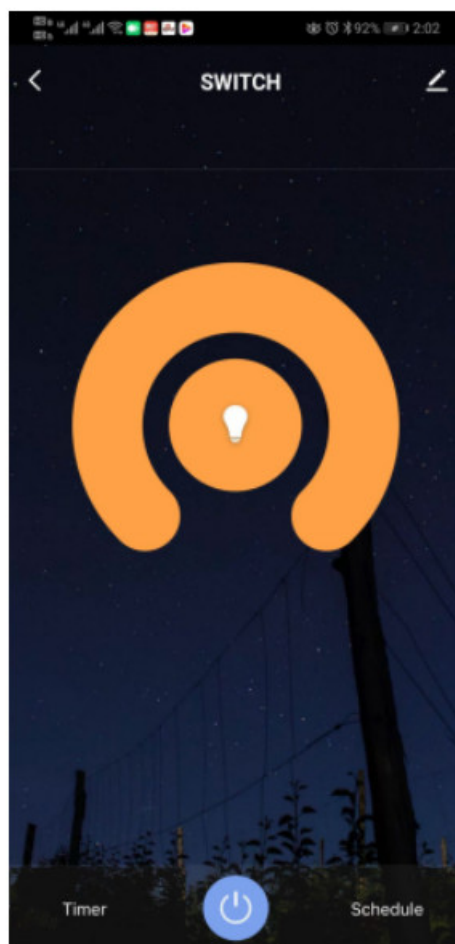
An additional AC relay or contactor is needed when the total input current of the load (such as a pump) is higher than 1.5A.



## Homcloud App Download and registration

Download Homcloud App from App Store or Google Play and register a new Account.  
Important: our App only supports 2.4GHz Wi-Fi networks IEEE 802.11 b/g/n

## Homcloud APP Network connection and operation



## CONFIGURATION:

1. Press and hold the Match/Set key for 2s, or push twice Match/Set key fastly until the blue LED indicator flash fastly. (EZ Mode)  
1b) if point 1 fails, use AP Mode: Press and hold the Match/Set key for 5s: Clear the previous network connection, enter AP config mode, the blue LED indicator flash slowly. (AP Mode)
2. Open the Homcloud App and press "Add Device" or "+" in the upper right corner to add the device and select the correct device to start the pairing process.
3. Follow the instructions on the App, giving all the confirmations needed.
4. Choose the Name and house position if you wish, then start using the device.

### Homcloud Switch module match RF remote control (Optional)

An end users can choose the suitable match/delete ways. Two options are offered for selection:

#### Use the controller's Match key

##### Match:

Short press the match key of the controller/wifi module and immediately press the on/off key (single zone remote) or zone key (multiple zones remote) on the remote.

##### Delete:

Press and hold the match key of the controller/module for 15s to delete all matches, The light blinks 5 times means all matched remotes were deleted.

#### Use Power Restart

##### Match:

Switch off the power of the controller/wifi module, then switch on the power, and repeat again, Immediately short press the on/off key (single zone remote) or zone key (multiple zones remote) 3 times on the remote. The light blinks 3 times means the match is successful.

##### Delete:

Switch off the power of the controller/wifi module then switch on the power, and repeat again, Immediately short press the on/off key (single zone remote) or zone key (multiple zones remote) 5 times on the remote. The light blinks 5 times means all matched remotes were deleted.

### Homcloud Switch module work as a WiFi-RF converter to match other RF switch or controller

The end users can choose suitable match/delete ways. Two options are offered for selection:

#### Use the controller's Match key

##### Match:

Short press the match key of the controller, and immediately press on/off key on the Homcloud/Smart Life APP. The LED indicator fast flash a few times means the match is successful.

##### Delete:

Press and hold the match key of the controller for 10s, The LED indicator fast flash a few times means the match was deleted.

#### Use Power Restart

##### Match:

Switch off the power of the controller, then switch on the power, repeat again, An immediately short press on/off key 3 times on the Homcloud/Smart Life APP. The light blinks 3 times means the match is successful.

##### Delete:

Switch off the power of the controller, then switch on the power, repeat again, An immediately short press on/off key 5 times on the Homcloud/Smart Life APP. The light blinks 5 times means the match was deleted.

### Light on/off fade time

Switch off the power, then switch on power, repeat again.

Immediately short-press match key 3 times, the light on/off time will change between 3s and 0.5s.

### Integration with Alexa and Google

Download and install Google Home or Amazon Alexa App and control your devices with your voice, with smart speakers or directly with your smartphone.

IMPORTANT:if you want to link the home cloud App to Google Home or to the Amazon Alexa App, you need to select "SMART LIFE" App between the list of Google Home Partners or Amazon Alexa Skills.

After that passage, the user will be automatically directed to the Homcloud App.

There is NO NEED to download the Smart Life App, only the Homcloud App is needed.

### Declaration of Conformity

Hereby, Life365 Italy S.p.A. declares that this wireless device complies with the essential requirements and other related provisions of Directive 2014/53 / EU of the European Parliament and of the Council. The declaration can be consulted on the website [www.homcloud.com/doc](http://www.homcloud.com/doc).

"Homcloud" is a registered trademark of Life365 Italy S.p.A.

Imported by Life365 Italy S.P.A. – European General Agency

Viale Roma 49/a 47122 Forlì Italy –

**Made in China**

### Environmental information

This product may contain substances that can be harmful to the environment and human health if it is not disposed of properly.

We, therefore, provide you with the following information to avoid the release of these substances and to improve the use of natural resources. Electric and electronic equipment must not be disposed of with normal urban waste but must be sent to separate collections for their correct treatment. The crossed-out bid symbol, affixed to the product and on this page reminds you of the need to dispose of, it and reminds the product of to end of its life. In this way, it is possible to avoid a non-specific treatment of the substances contained in these products or improper use of parts of them which can lead to harmful consequences for the environment and human health. It also contributes to the recovery, recycling, and reuse of many of the materials contained in these products. For this purpose, the manufacturers and distributors of electrical and electronic equipment organize appropriate collection and disposal systems for the equipment. At the end of the product's life, turn to your appliance for information on how to collect it. When purchasing this product, your device will also inform you of the possibility of returning a device for free at the end of its life provided that it is of an equivalent type and performs the same functions as the purchased product or, if the dimensions are not greater than 25 cm, the EEE can be returned without the obligation to purchase the equivalent product. Disposal of the product in a different way from what is described above will be subject to the penalties provided for by the national legislation in force in the country where it is disposed of. We also recommend that you take other measures favorable to the environment: recycle the internal and external packaging with which the product is supplied and properly dispose of used batteries (only if contained in the product). With the help, it is possible to reduce the number of natural resources used for the construction of electrical and electronic equipment, to minimize the use of discharged resources for the disposal of products, and to improve the quality of life by avoiding substances that reduce the environment.


### CUSTOMER SERVICE

If you need help scan the QR code below and message us on WhatsApp.





## Documents / Resources

	<p><b><a href="#">HOMECLLOUD SK-SSB WiFi and RF Smart AC Switch</a></b> [pdf] User Manual SK-SSB, WiFi and RF Smart AC Switch, SK-SSB WiFi and RF Smart AC Switch, WiFi and RF, Smart AC Switch, Switch</p>
---	---

[Manuals+](#).