



home TF 311 Table Fan Instruction Manual

[Home](#) » [home](#) » home TF 311 Table Fan Instruction Manual 

Contents

- 1 [home TF 311 Table Fan](#)
- 2 [STRUCTURE](#)
- 3 [IMPORTANT SAFETY INSTRUCTIONS](#)
- 4 [ASSEMBLY OF THE DEVICE](#)
- 5 [CLEANING](#)
- 6 [TROUBLESHOOTING](#)
- 7 [DISPOSAL](#)
- 8 [FEATURES](#)
- 9 [THE FAN OPERATION](#)
- 10 [TECHNICAL SPECIFICATION](#)
- 11 [Documents / Resources](#)
- 12 [Related Posts](#)

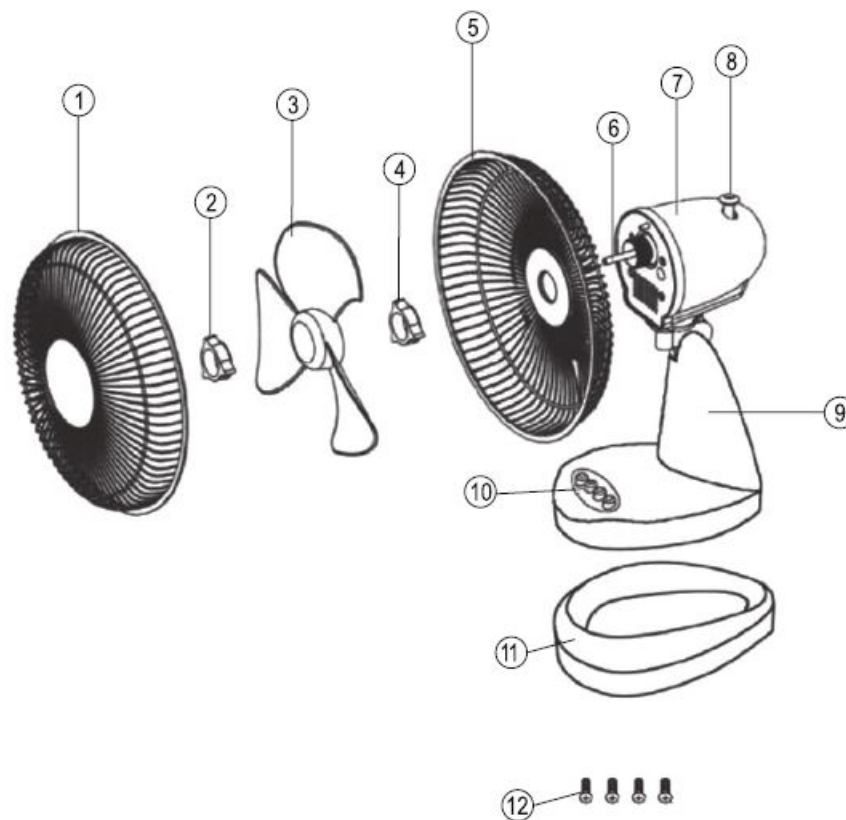


home TF 311 Table Fan



STRUCTURE

1. Front part of the grid
2. Blade fastening nut
3. Fan blade
4. Grid fastening nut
5. Rear part of the grid
6. Motor axle
7. Motor
8. Switch of oscillation
9. Stand
10. Speed level switches
11. Base
12. Screws



IMPORTANT SAFETY INSTRUCTIONS

READ THE INSTRUCTION MANUAL CAREFULLY BEFORE USE AND RETAIN IT FOR LATER REFERENCE!

WARNINGS

1. Before using the product for the first time, please read the instructions for use below and retain them. The original instructions were written in the Hungarian language.
2. This appliance may only be used by persons with impaired physical, sensory, or mental capabilities, or lacking in experience or knowledge, as well as children from the age of 8 if they are under supervision or have been given instruction concerning the use of the appliance and they have understood the hazards associated with use. Children should not be allowed to play with the unit. Children may only clean or perform user maintenance on the appliance under supervision.
3. Make sure that the appliance has not been damaged in transit!
4. The appliance must not be used with programmable timers, timer switches, or stand-alone remote-controlled systems that can automatically turn the unit on because any covering or improper location of the unit can cause an accident.
5. Do not use in locations where flammable vapors or explosive dust may be present. Do not use near-flammable materials or in potentially explosive atmospheres!
6. Operate only under constant supervision!
7. Do not operate unattended in the presence of children!
8. Only for indoor use, in a dry place. Protect from humidity (e.g. bathrooms, swimming pools)!
9. It is PROHIBITED to use the unit near bathtubs, basins, showers, swimming pools, or saunas!
10. It is prohibited to use the appliance in motor vehicles or in confined spaces (<5 m²) such as elevators!
11. When not planning to use the unit for an extended period of time, switch it off then remove the power plug from the outlet!

12. Always remove power from the appliance before relocating it!
13. Only move it by using the carrying handle!
14. If any irregular operation is detected (e.g., unusual noise or burnt odor from the unit), immediately switch it off and remove the power plug!
15. Make sure that no foreign objects or liquid can enter the appliance through the openings.
16. Protect from dust, humidity, sunlight, and direct heat radiation.
17. Power off the unit by unplugging it from the electric outlet before cleaning!
18. Always power off the fan before removing or fastening back the protective grid, by unplugging it from the electric outlet!
19. Never touch the unit or the power cable with wet hands!
20. The appliance may only be connected to 230 v / 50 Hz electric wall outlets!
21. Unwind the power cable completely!
22. Do not lead the power cable over the appliance!
23. Do not lead the power cable under carpets, doormats, etc.!
24. The appliance should be located so as to allow easy access and removal of the power plug!
25. Lead the power cable so as to prevent it from being pulled out accidentally or tripped over!
26. The actual instruction manual can be downloaded from the www.somogyi.hu website.
27. We don't take the responsibility for printing errors and apologize if there are any.
28. The unit is intended for household use. No industrial use is permitted!

Caution:

Risk of electric shock!

- Do not attempt to disassemble or modify the unit or its accessories. In case any part is damaged, immediately power off the unit and seek the assistance of a specialist.
- In the event that the power cable should become damaged, it should only be replaced by the manufacturer, its service facility, or similarly qualified personnel.

ASSEMBLY OF THE DEVICE

1. Fasten the base (11) with 4 pcs screws to the stand (9).
2. Place the rear part of the grid (5) onto the motor so as to get the carrying handle facing upwards.
3. After that fasten the grid fixing nut (4).
4. Push the blade (3) to the motor axle (6), and then fix it with the nut (2).
5. Hang the front part of the grid onto the rear part (4), fix it with the clasps, and then fasten it with a screw at the bottom.

CLEANING

In order to ensure optimum functioning, the unit may require cleaning at least once a month, depending on the manner of use and degree of contamination.

1. Prior to cleaning switch off and power off the unit by unplugging it from the electric outlet!

2. **Attention!** Remove the front part of the grid when the fan is not under power!
3. Use a slightly moistened cloth to clean the unit's exterior. Do not use any aggressive cleaners. Avoid getting water inside and on the electric components of the appliance!
4. Attention! Put back and fasten the protective grid to the fan, when it is not under power!
5. Only reinstall the fan afterward!

TROUBLESHOOTING

Malfunction	Possible solution
The fan doesn't turn on.	Check the power supply. Check the switches.
The fan does not oscillate.	Check the switch of oscillation.

DISPOSAL

Waste equipment must be collected and disposed of separately from household waste A because it may contain components hazardous to the environment or health. Used or waste equipment may be dropped off free of charge at the point of sale, or at any distributor which sells equipment of identical nature and function. Dispose of products at a facility specializing in the collection of electronic waste. By doing so, you will protect the environment as well as the health of others and yourself. If you have any questions, contact the local waste management organization. We shall undertake the tasks pertinent to the manufacturer as prescribed in the relevant regulations and shall bear any associated costs arising.

FEATURES

Nominal blade diameter: 30 cm

- adjustable output (3 stages)
- fixed standing or oscillation (90°)
- the controllable dip angle of the head
- dense grid
- white

THE FAN OPERATION

The fan can be switched on and the target speed stage can be adjusted with 1, 2, or 3 speed-level switches (10). By pushing down the switch of oscillation (8), oscillation can be switched on, by pulling it up, it can be switched off. You can switch off the fan with 0 buttons. The dip angle of the head can be adjusted simply, there's no need to loosen or fasten any screws.

TECHNICAL SPECIFICATION

- power supply: 230 V – I 50 Hz / 40 W
- protection class: 11.

- maximum fan• air mass volume: $F = 31,58 \text{ 111'}/\text{min}$
- fan input power: $P = 36,32 \text{ W}$
- service value: $SV = 0,87 \text{ (111'}/\text{min)}/\text{W}$
- power consumption during standby position: $P_{ss} = 0 \text{ W}$
- noise level: $l_{wA} = 54,3 \text{ dB(A)}$
- maximum air speed: $c = 2,437 \text{ m/sec}$
- service value standard: IEC 60879:2019 (corr. 1992)
- blade diameter: 30 cm
- ventilator height: 47 cm
- ventilator weight: 1, 7 kg

Producer

Distributor: SOMOGYI ELEKTRONIC SLOVENSKO s. r. o.


UL gen. Klapku 77, 945 01 Komamo, SK• Tel.: +421/0/35 7902400 • www.somogyi.sk.

Distribuito: S.C. SOMOGYI ELEKTRONIC S.R.L.

J12/2014/13.06.2006 C.U.I.: RO 18761195 Cluj-Napoca, judeul Cluj, Romania, Str. Prof. Dr. Gheorghe Marinescu, nr. 2, Cod postal: 400337

Tel.: +40 264 406 488, Fax: +40 264 406 489 • www.somogyi.ro.

Documents / Resources

 <p>home TF 311</p> <p>Seznamte sa s novým produktom značky home TF 311 príručku na použitie príručku na použitie príručku na použitie príručku na použitie príručku na použitie</p> <p>home</p>	<p>home TF 311 Table Fan [pdf] Instruction Manual</p> <p>TF 311 Table Fan, TF 311, Table Fan, Fan</p>
---	---