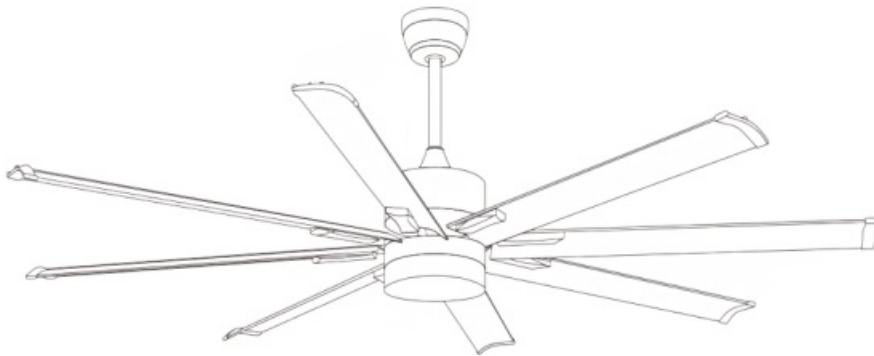


Home Depot F869 Propeller Ceiling Fan Instruction Manual

[Home](#) » [HOME DEPOT](#) » Home Depot F869 Propeller Ceiling Fan Instruction Manual 

Home Depot F869 Propeller Ceiling Fan





Read these instructions carefully and keep them for future reference


Contents


- 1 Safety Information
- 2 Ceiling fan installation process
- 3 Tools Needed
- 4 BEFORE YOU START
- 5 Installation of the hanging bracket (suspension part)
- 6 Install the hanging part of the ceiling fan.
- 7 Assembly – Hanging the Fan
- 8 Assembly – Attaching the Fan Blades
- 9 Assembly-Attaching the cover
- 10 Function Instruction of Emitter
- 11 Change Downrod (OPT)
- 12 Product problems you encountered
- 13 Documents / Resources
 - 13.1 References


Safety Information


 **WARNING:** TO reduce the risk of personal injury, do not bend the blade brackets (also referred to as flanges) during assembly or after installation. Do not insert objects in the path of the blades.

 **WARNING:** Remove the rubber motor stops on the bottom of the fan before installing the blades or testing the motor.

 **WARNING:** To reduce the risk of fire or electric shock, do not use this fan with any solid-state speed control device.

 **WARNING:** To avoid possible electrical shock, turn the electricity off at the main fuse box before wiring. If you feel you do not have enough electrical wiring knowledge or experience, contact a licensed electrician.

 **WARNING:** Electrical diagrams are for reference only. Optional use of any light kit shall be UL-listed and marked suitable for use with this fan.

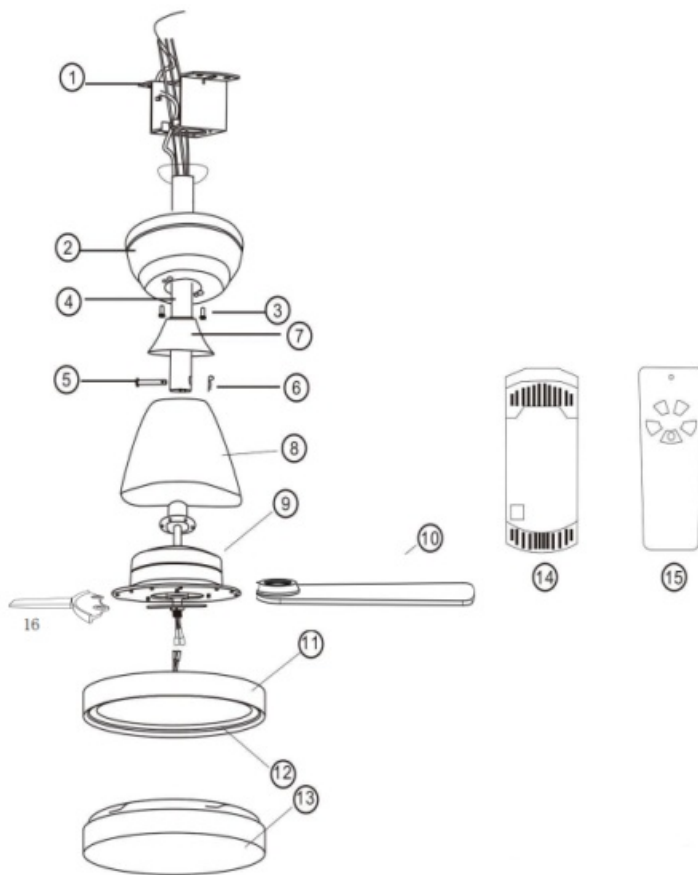
 **WARNING:** To reduce the risk of fire, electric shock, or personal injury. mount to outlet box marked "Acceptable for fan support of 35 lbs. (15.9 kg) or less." and use the screws provided with the outlet box.

Ceiling fan installation process

Pre-installation

1. Mounting Bracket
2. Canopy
3. Canopy Screws
4. Downrod
 - (Short rod 10cm)
 - (Long pole 20cm)

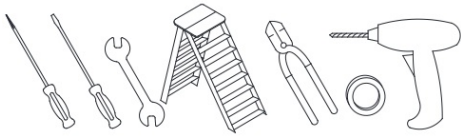
5. Cross pin
6. Cotter pin
7. Yoke cover
8. Motor house
9. Motor
10. Blade
11. Lamp panel
12. LED
13. Lampshade
14. Receiver
15. Remote control
16. Leaf fork



Tools Needed

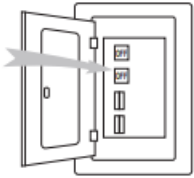
You may need the tools below:

- Screwdrivers
- Wrench
- Ladder
- Wire Strippers
- Insulation Tape
- Power drill

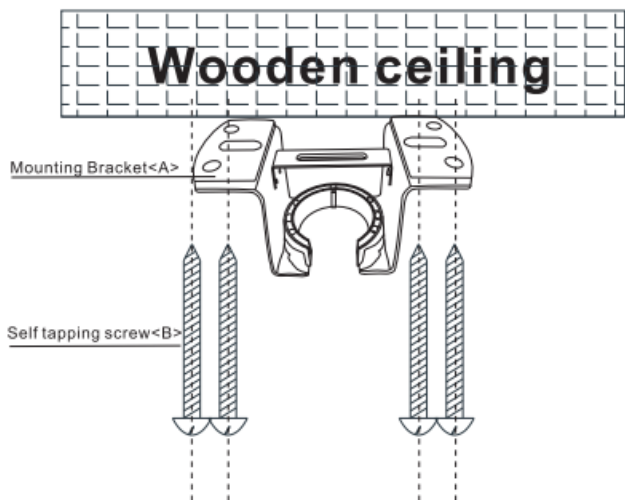


BEFORE YOU START

Contact a licensed electrician if you are not good at performing electrical work. It's the licensed electrician who installs the fan, if required by the local code. Do not use the fan with a dimmer switch. Turn off power at breaker.



Installation of the hanging bracket (suspension part)



For wooden ceiling, use wood screw to drill on the wooden beam or the “junction box” to fix the hanging bracket (selection is made according to actual requirements of the customers).

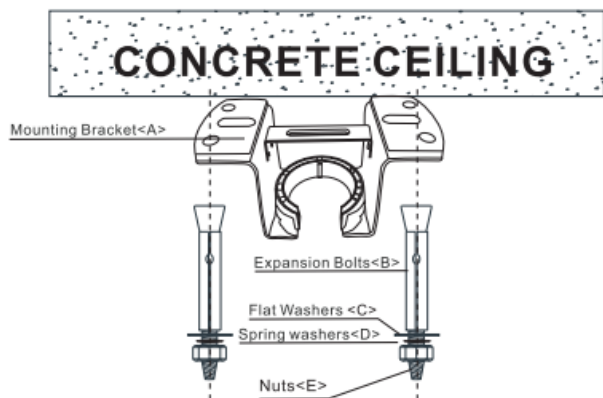
STEP 1A-WOODEN CEILING

SWITCH OFF THE ELECTRICAL MAINS AT THE CIRCUIT BREAKER FUSE BOX.

1. Use the Mounting Bracket (A) as a guide, mark the spots where the 4 Self Tapping Screws (B) will be drilled.
2. Remove the Mounting Bracket (A), drill 4 holes for 3MM diameter, install the mounting bracket onto wooden ceiling with the 4 Self Tapping Screws (B),

⚠ IMPORTANT: SCREWS MUST BE TIGHTENED TILL SNUG

⚠ Note: According to the ceiling of different materials, use different screws to fix the hanging bracket. Don't fix the hanging bracket on the wood ceiling less than 12MM to prevent danger caused by loosening of screws. After the hanging bracket is completed, ensure that it can withstand the tension test of more than 68KG for safety.



For concrete ceiling, use the percussion bit with diameter 8mm to drill holes according to the length of expansion screws. Then use the attached expansion screws to fix the hanging bracket onto the ceiling (selection is made according to actual requirements of the customers).

STEP 2A-CONCRETE CEILING

SWITCH OFF THE ELECTRICAL MAINS AT THE CIRCUIT BREAKER FUSE BOX.


1. Use the Mounting Bracket (A) as a guide, mark the spots where the 4 Expansion Bolts (B) will be drilled.
2. Remove the Mounting Bracket (A), drill 4 holes and insert 4 Expansion Bolts (2) into the concrete ceiling, install the mounting bracket and secure with Flat Washers (C), Spring Washers (D) and Nuts (E).

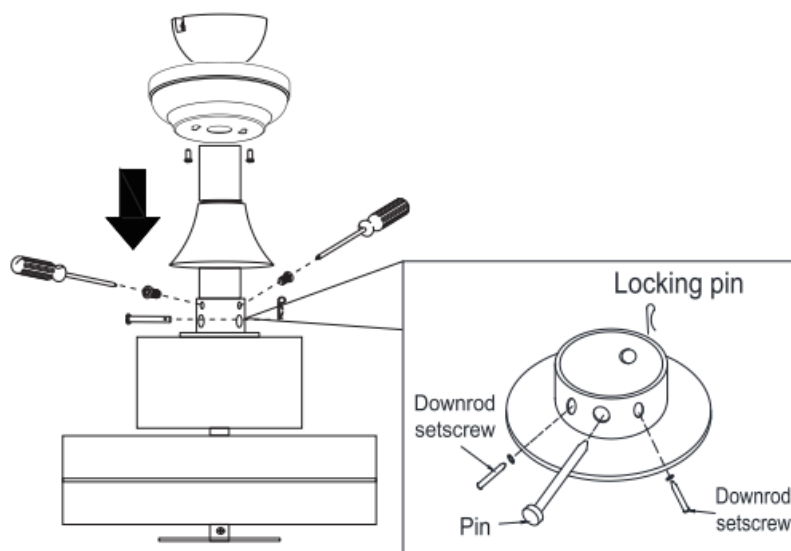
IMPORTANT: SCREWS & NUTS MUST BE

 **TIGHTENED TILL SNUG**

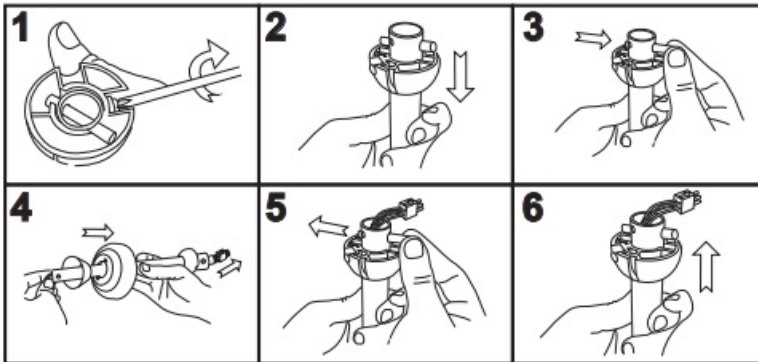
Install the hanging part of the ceiling fan.

install downrod assembly

 Phillips screwdriver



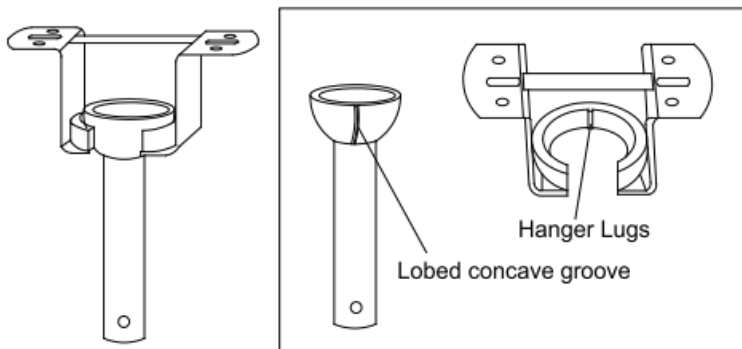
1. Thread the suspender through the suspended clock and coupling cover.
2. Then insert the tail of the suspender from the lifting head of the motor.
3. After the lateral pin is threaded out from the suspended head position, insert R type pin.
4. Tighten the lifting head screws.
5. Hang the fan of the hanging pipe into the hanger.



Assembly – Hanging the Fan

Mount Fan to Bracket

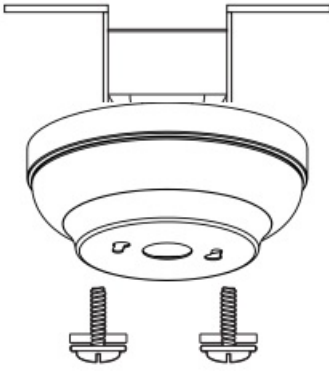
Lift the fan assembly onto the mounting bracket. Ensure the registration slot of the hanger ball is positioned on the stopper of the mounting bracket to prevent the fan from rotating when in operation.



Tips: Seek the help of another person to hold the stepladder and hang the fan body for you.

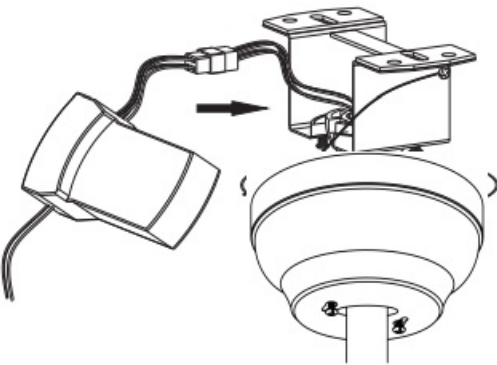
Preparing for mounting

1. Remove the mounting bracket from the canopy by loosening the two canopy screws located in the L shaped slots.
2. Remove and save the two canopy screws in the round holes. This will enable you to remove the mounting bracket



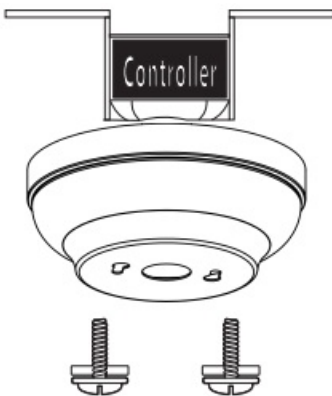
Install remote control

1. Carefully push the canopy to the bottom of the mounting bracket, make two sliding holes aligned to the two prominent screws on the mounting bracket, and then turn clockwise until tight.
2. Push the canopy ring to the bottom of the canopy, slide the inner holes aligned to the two prominent screws on the mounting bracket again, and turn the canopy ring clockwise until tight.



Preparing for mounting

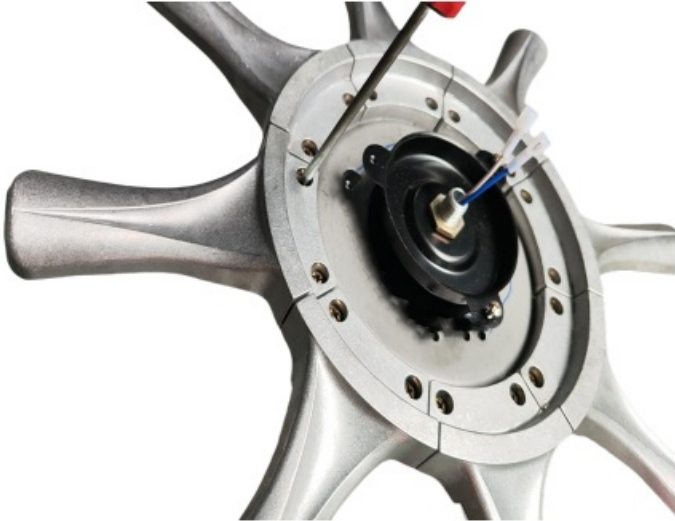
1. Remove the mounting bracket from the canopy by loosening the two canopy screws located in the L shaped slots.
2. Remove and save the two canopy screws in the round holes. This will enable you to remove the mounting bracket



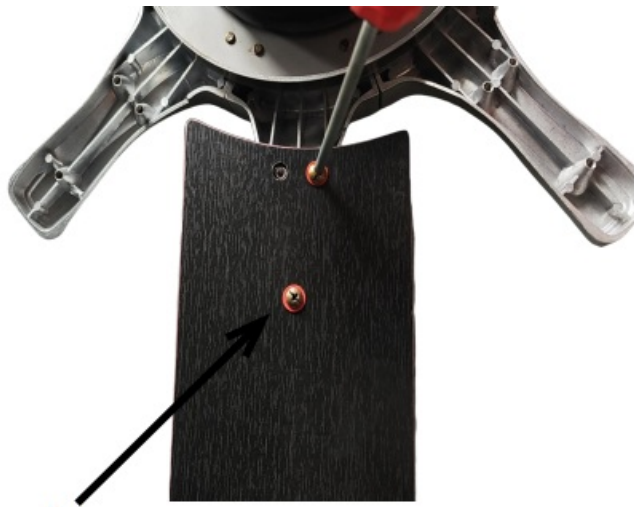
Assembly – Attaching the Fan Blades

Fastening the blade to the motor

1. Install Leaf fork onto the motor



2. . Install the fan blades and fix them to A with screws



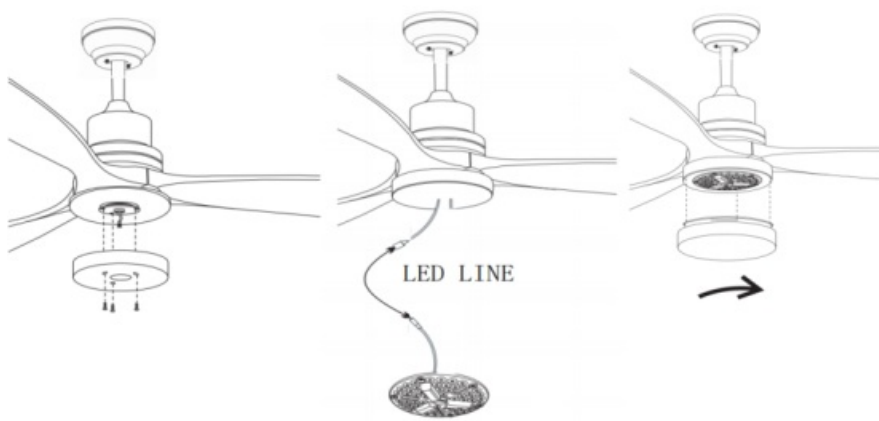
Be careful to put on
the gasket

Fasten the Blade to the fan-motor assembly by inserting the alignment post into the slot on the bottom of the motor and tightening the pre-installed Blade screws.
Repeat this step for the remaining blade assemblies.

Assembly-Attaching the cover

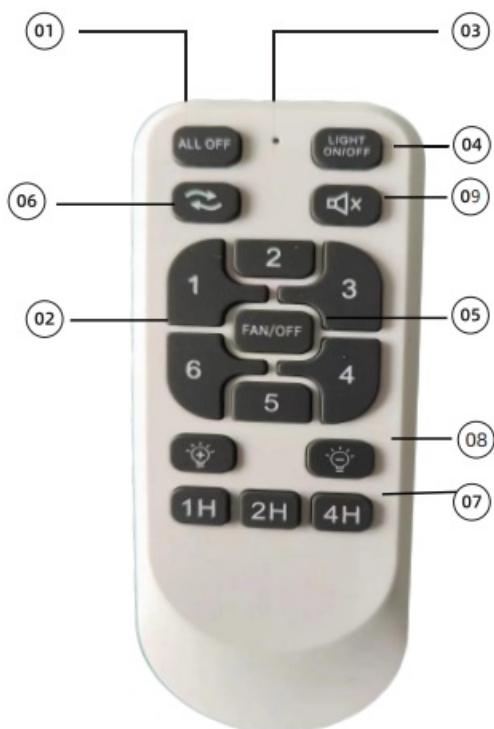
1. Remove 3 mounting screws from the light kit.
2. Find the Molex connector from the motor and the Molex connector from the light kit. Slide them together.
3. Install the motor' s junction box with 3 screws and tighten light kit.
4. Carefully install the glass shade into the main body and turn it clockwise to lock.

WARNING : Take care not to over tighten when installing the glass shade.



Function Instruction of Emitter

1. Turn off all Loads
2. Fan Speed Control
3. LED Indicator Light
4. Turn On the Light (no light Not Applicable)
5. Fan Off (Include Wind Speed and Lights)
6. Fan Forward and Counter Rotation Control
7. Fan Timing Control
8. Brightness adjustment
9. BEE sound ON/OFF

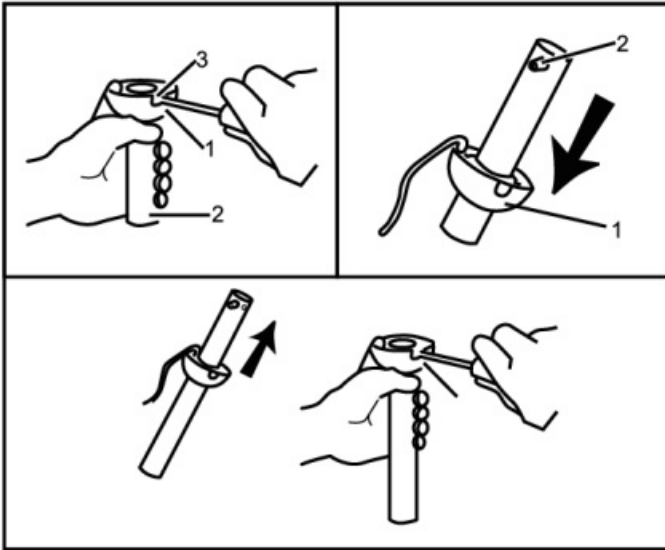


Change Downrod (OPT)

The Ceiling Fan comes with 5inches and 10inches downrod which is preassembled and attached ti the hanger ball, one longer 10inches downrod is also included for higher ceilings. If you need a different downrod length, please follow these steps:

1. Loosen the hanger ball from ball from downrod by removing set screw.

2. Slide downrod ball off of downrod and remove pin
3. Re-install pin into extended downrod, and slide downrod ball up to the top of the downrod
4. Re-install set screw to secure ball to downrod



Product problems you encountered

Dear buyer

Thank you for your support and choice. You have the opportunity to register your product for a 12-month warranty. To register for warranty service, please contact our after-sales email and enter the order number or provide a screenshot; we will immediately register the information for your product and activate the order number. From the date of purchase to the next 12 months, if you encounter any product problems during the use of the product, you can contact our after-sales mailbox, and we can replace and reissue new accessories and new ceiling fans for free. This makes it easier for us to contact and register product issues later. If you have any questions about the topics below, please contact our after-sales team and provide your order number along with your name, phone number, and specific shipping address.

Product Problem:


* Ceiling fan Shaking:

1. Check whether the cam ball is tightened with screws
2. Check whether the lifting head screws are tightened
3. Check whether the three fan blades are evenly distributed (see whether the gap between the fan blades is the same size)
4. Check whether there is a balance patch in the black package, Can be used to adjust the balance of fan blades.

*** Shade Damage/Blade Damage:**

Please contact our after-sales team and send pictures or video feedback to check the damage of the product, please contact our after-sales team and provide your order number, your name, phone number, and specific shipping address. Accessory issues: including screw kits, remotes, controllers missing or unavailable, please contact our after-sales team with your order number and your name, phone, and specific shipping address.

Documents / Resources

	<p>Home Depot F869 Propeller Ceiling Fan [pdf] Instruction Manual F869-8-72TY, 31f2755d-7fa4-46bd-91e2-794037dd1f30, F869 Propeller Ceiling Fan, Propeller Ceiling Fan, Ceiling Fan</p>
--	---

References

- [User Manual](#)

Manuals+, Privacy Policy

This website is an independent publication and is neither affiliated with nor endorsed by any of the trademark owners. The "Bluetooth®" word mark and logos are registered trademarks owned by Bluetooth SIG, Inc. The "Wi-Fi®" word mark and logos are registered trademarks owned by the Wi-Fi Alliance. Any use of these marks on this website does not imply any affiliation with or endorsement.