


**Rollator
Walker**



HOMCOM Rollator Walker Instruction Manual

[Home](#) » [HOMCOM](#) » HOMCOM Rollator Walker Instruction Manual 

Contents

- [1 HOMCOM Rollator Walker](#)
- [2 Product Usage Instructions](#)
- [3 Maintenance](#)
- [4 PARTS](#)
- [5 ASSEMBLY INSTRUCTION](#)
- [6 Documents / Resources](#)
 - [6.1 References](#)



HOMCOM Rollator Walker



Product Information

This product is a versatile assembly kit designed for multiple purposes. It includes various screws, bolts, and parts for easy assembly and installation.

Specifications

- Model: IN240400075V01_GL_713-034V01
- Country: US_CA
- Language: English (EN), Spanish (ES), Italian (IT)

Product Usage Instructions

Step 1: Sorting Parts

Before starting the assembly, carefully sort all parts to ensure you have everything needed for the installation.

Step 2: Following Language Instructions

Refer to the instructions in the language of your choice (EN,ES, IT) for clear guidance on the assembly process.

Step 3: Assembly Process

Connect the parts according to the provided diagrams. Do not tighten the bolts fully until all parts are connected to avoid misalignment.

IMPORTANT, RETAIN FOR FUTURE REFERENCE: READ CAREFULLY.

Maintenance

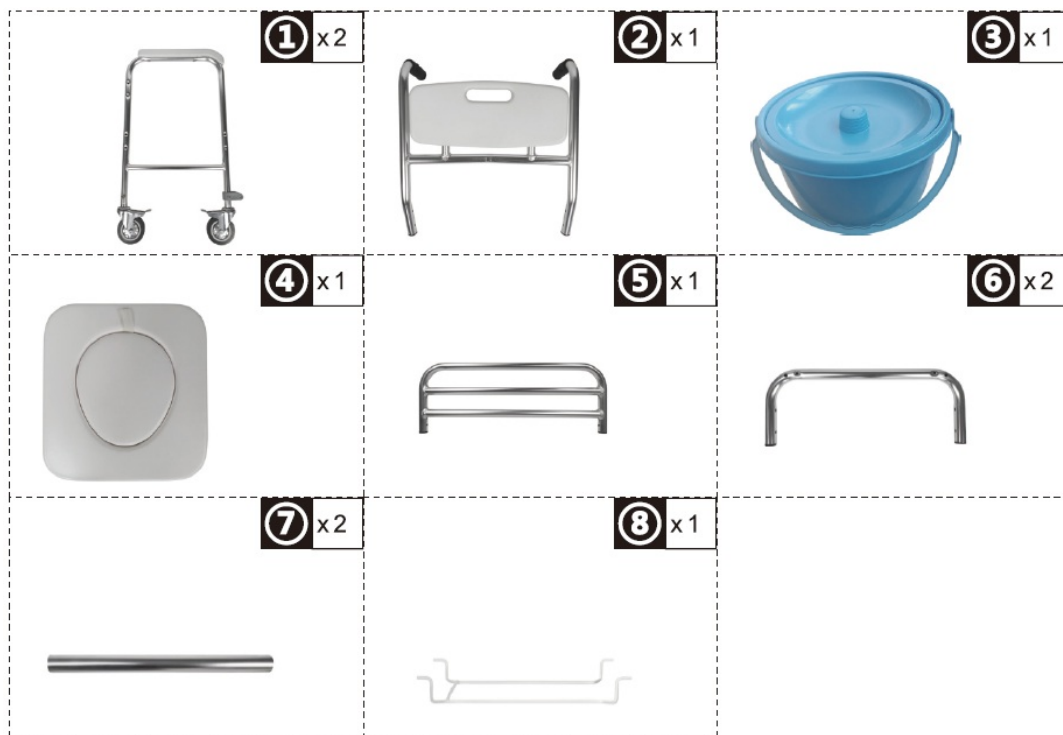
1. The exterior of this rollator walker should be cleaned periodically with a soft damp cloth. Do not use abrasive cleaners or caustic chemicals.
2. Check the parts for any looseness, wear, or damage periodically. If any problems are found, correct them before using them.

3. If haven't used it for a long time, please store it in a cool, dry and safe place.

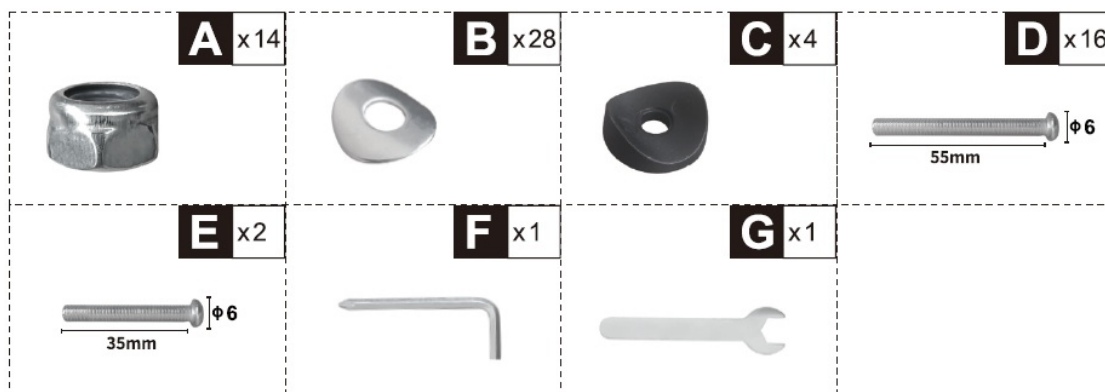
Warning

1. Before using, make sure the rollator is fully opened.
2. Checking the brakes and seat are locked, seat part especially.
3. The brakes must be locked before using the seat.
4. Max loading weight is 150kg

PARTS



HARDWARE



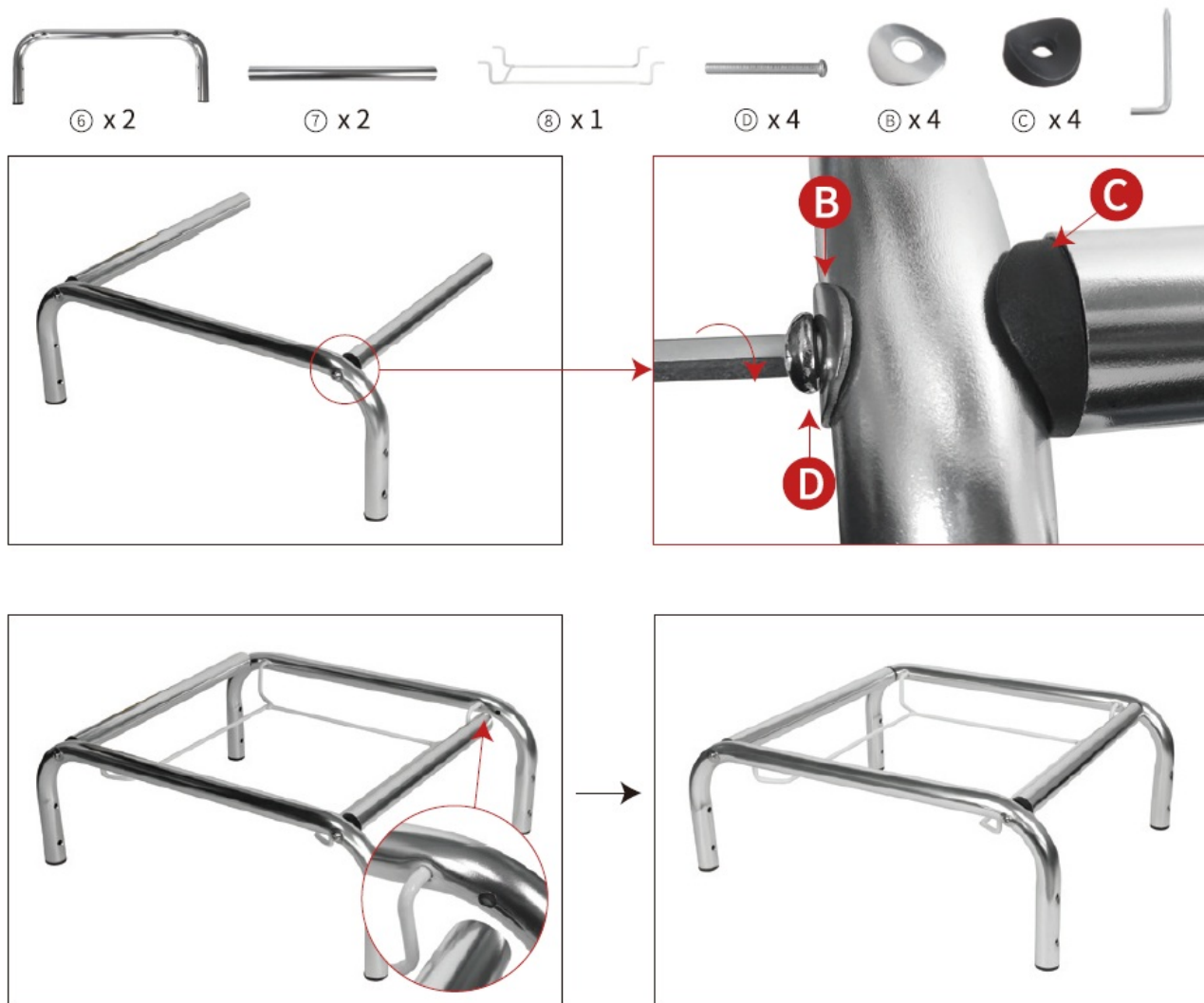
NOTE

Do not confuse similar screws Do not tighten bolts fully until all parts are connected!

ASSEMBLY INSTRUCTION

STEP 1

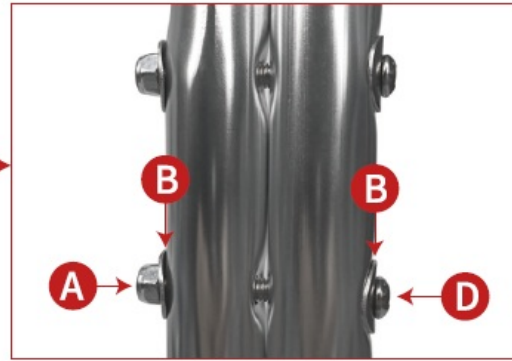
Bucket Hanging Bracket (8) into ALUMINUM FRAME (6), following Previous step again.



STEP 2

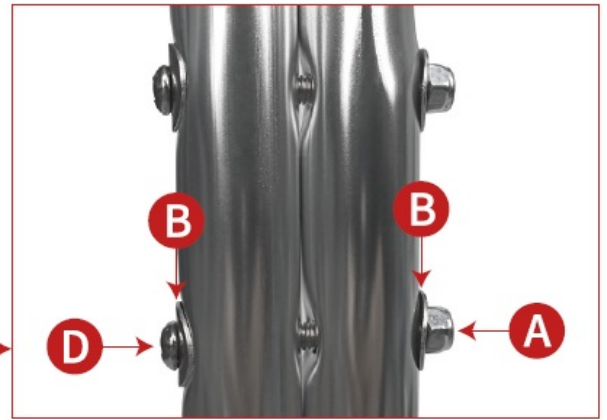
Joint two ARMRESTS (1) to ALUMINUM FRAME (6), with 1PC SCREW (D) ,2PCS METAL GASKETS (B) and 1PC SCREW NUT (A) in one hole of each side (each side has two holes).

Notes: Please make sure the semi-closed bracket face front to avoid bucket falling down.



STEP 3

Joint two ARMRESTS (1) or BACKREST WITH HANDLES (2), with 1PC SCREW (D), 2PCS METAL GASKETS (B) and 1PC SCREW NUT (A) in one hole of each side (each side has two holes).



Nut facing outside

STEP 4

Put BUCKET (3) on the BUCKET HANGING BRACKET (8).

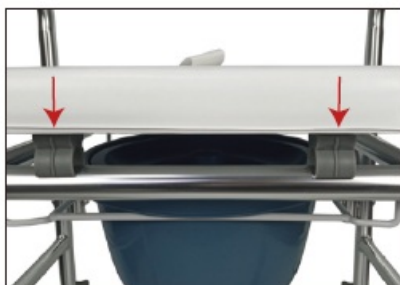


STEP 5

Put PADDED SEAT (4). jointing ALUMINUM FRAME (6) to two buckles.



④ x 1



STEP 6

Put PEDAL (5) on the anchor of ARMRESTS (1), align with the hole, insert the screw and install the nut on the other side



⑤ x 1



⑥ x 2



⑦ x 2



Frequently Asked Questions (FAQ)

Q: Can I use this product for outdoor installations?

A: Yes, this product is suitable for both indoor and outdoor use. Ensure proper maintenance for outdoor installations to prevent rusting.

Q: Are additional tools required for assembly?

A: Basic tools like a screwdriver may be needed for assembly. Refer to the manual for specific tool requirements based on your assembly needs.

If you have any questions, please contact our customer care center.

Our contact details are below:

001-[877-644-9366](tel:877-644-9366)

customerservice@aosom.com

Imported by Aosom LLC

27150 SW Kinsman Rd Wilsonville, OR 97070 USA

MADE IN CHINA

If you have any questions, please contact our customer care center.

Our contact details are below:

[416-792-6088](tel:416-792-6088)

customerservice@aosom.ca

Imported by Aosom Canada Inc.

7270 Woodbine Avenue, Unit 307, Markham, Ontario Canada L3R 4B9

MADE IN CHINA

If you have any questions, please contact our customer care center.


Our contact details are below:

0044-[800-240-4004](tel:800-240-4004)
enquiries@mhstar.co.uk

IMPORTER ADDRESS:

MH STAR UK LTD
Unit 27, Perivale Park,Horsenden lane South
Perivale, UB6 7RH
MADE IN CHINA

Documents / Resources

	<p>HOMCOM Rollator Walker [pdf] Instruction Manual GL_713-034V01, GL_713, IN240400075V01 Rollator Walker, IN240400075V01, Rollator Walker, Walker</p>
---	---

References

- [User Manual](#)

Manuals+, Privacy Policy

This website is an independent publication and is neither affiliated with nor endorsed by any of the trademark owners. The "Bluetooth®" word mark and logos are registered trademarks owned by Bluetooth SIG, Inc. The "Wi-Fi®" word mark and logos are registered trademarks owned by the Wi-Fi Alliance. Any use of these marks on this website does not imply any affiliation with or endorsement.