

HOMCOM 924-085V00 3 Drawer Storage Unit Table



HOMCOM 924-085V00 3 Drawer Storage Unit Table Instruction Manual

[Home](#) » [HOMCOM](#) » HOMCOM 924-085V00 3 Drawer Storage Unit Table Instruction Manual 

Contents

- 1 HOMCOM 924-085V00 3 Drawer Storage Unit Table
- 2 Product Information
- 3 Product Usage Instructions
- 4 USING CAM LOCK AND QUICKFIT
- 5 PARTS
- 6 HARDWARE
- 7 Assembly Instruction
- 8 FAQ
- 9 Documents / Resources
 - 9.1 References



HOMCOM 924-085V00 3 Drawer Storage Unit Table



Product Information

Specifications

- **Model:** IN231200360V01_GL
- **Part Number:** 924-085V00
- **Size:** 15mm x 9mm
- **Weight:** A 40 3*14
- **Colour:** Black

Product Usage Instructions

Installation

1. Prepare the area where you want to install the product.
2. Ensure the surface is clean and dry.
3. Peel off the adhesive backing of the product.
4. Carefully place the product on the desired surface and press firmly to secure it in place.

Operation

1. To turn the product on, press the power button located on the side.
2. Use the control panel to adjust settings as needed.
3. For advanced features, refer to the user manual for detailed instructions.

Maintenance

1. Clean the product regularly with a soft, damp cloth.
2. Avoid using harsh chemicals or abrasive materials that may damage the product.
3. Keep the product away from direct sunlight or extreme temperatures.

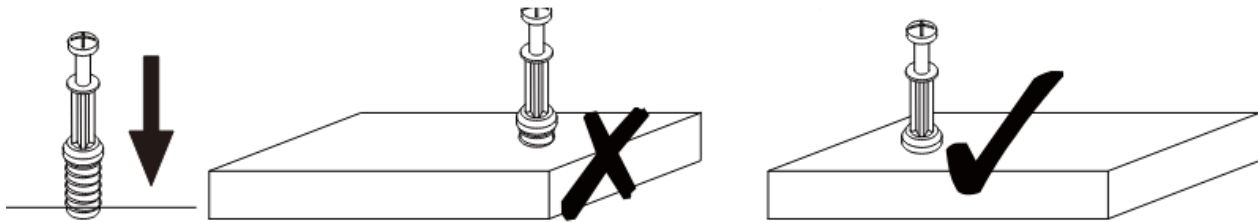
IMPORTANT. RETAIN FOR FUTURE REFERENCE: READ CAREFULLY.

Dear customer,

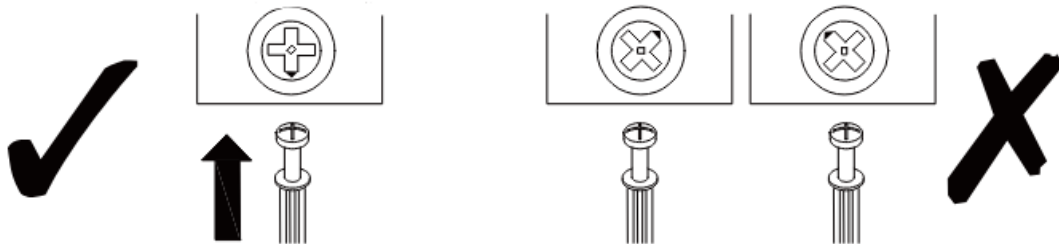
Thank you for purchasing this product. So that your appliance serves you well, please read all the instructions in this user's manual. If you have any questions, please contact our customer care center,

USING CAM LOCK AND QUICKFIT

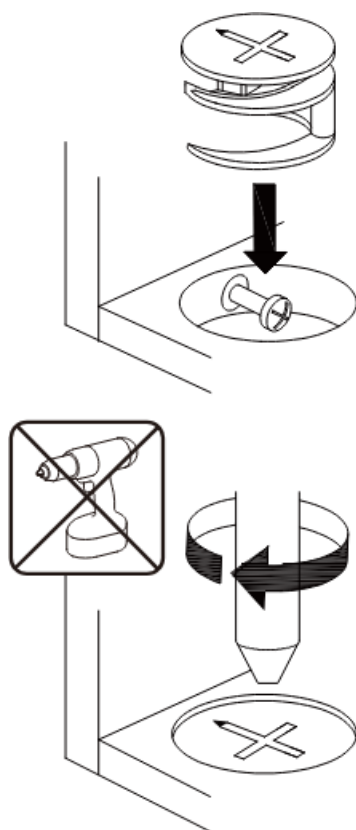
QUICKFIT: Tighten quickfit until shoulder is flush with panel. Do not overtighten or undertighten.



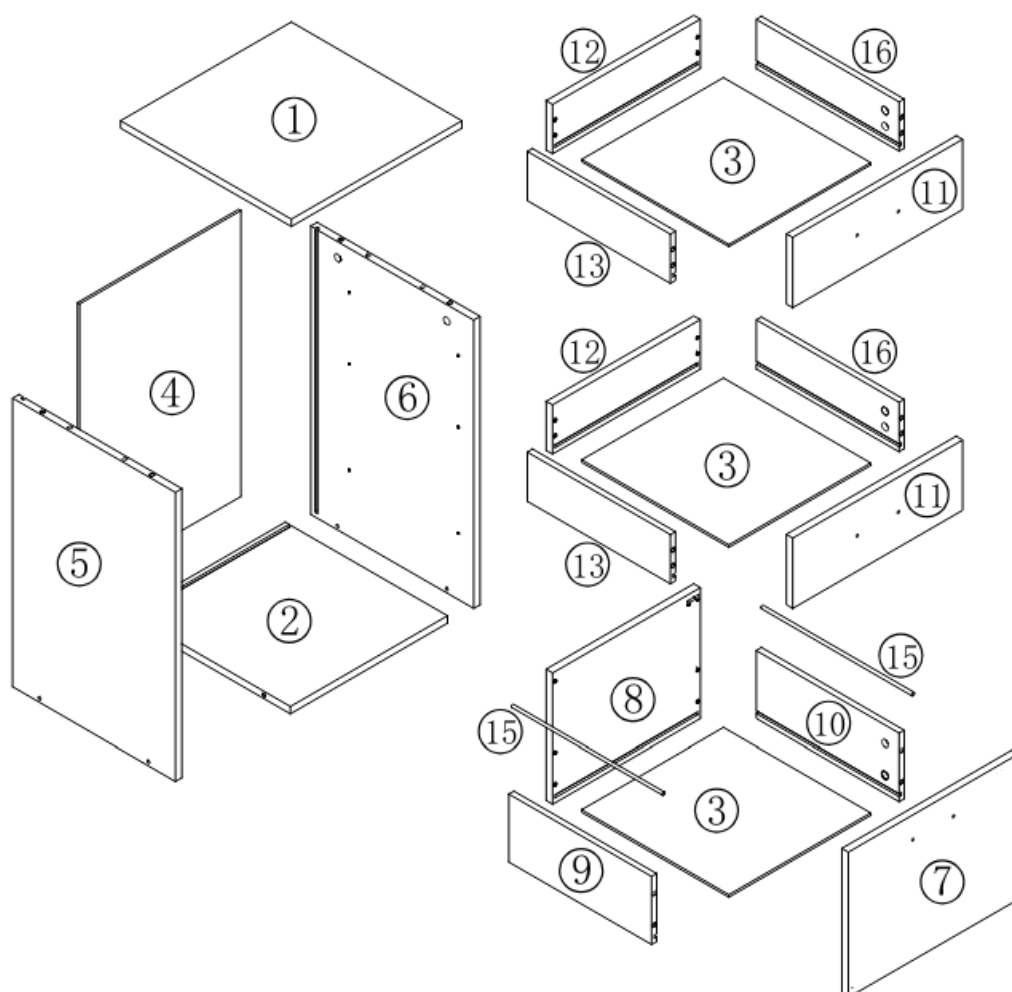
CAM LOCK: When fitting cam lock, ensure starting position is correct before you insert connecting quickfit.

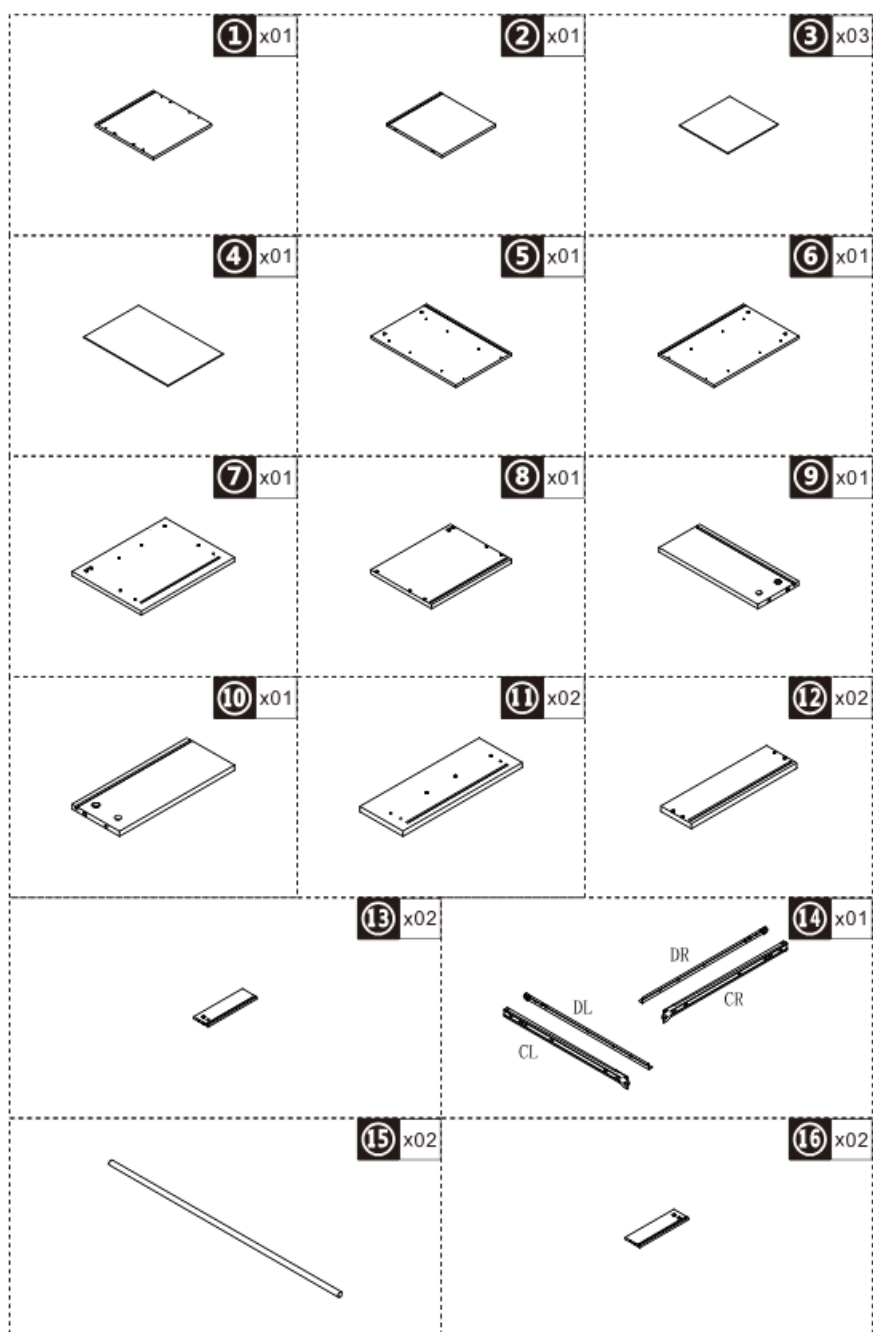


Quickfit head should be in the centre of the cam lock when the two panels are joined. Cam lock should be inserted before quickfit.

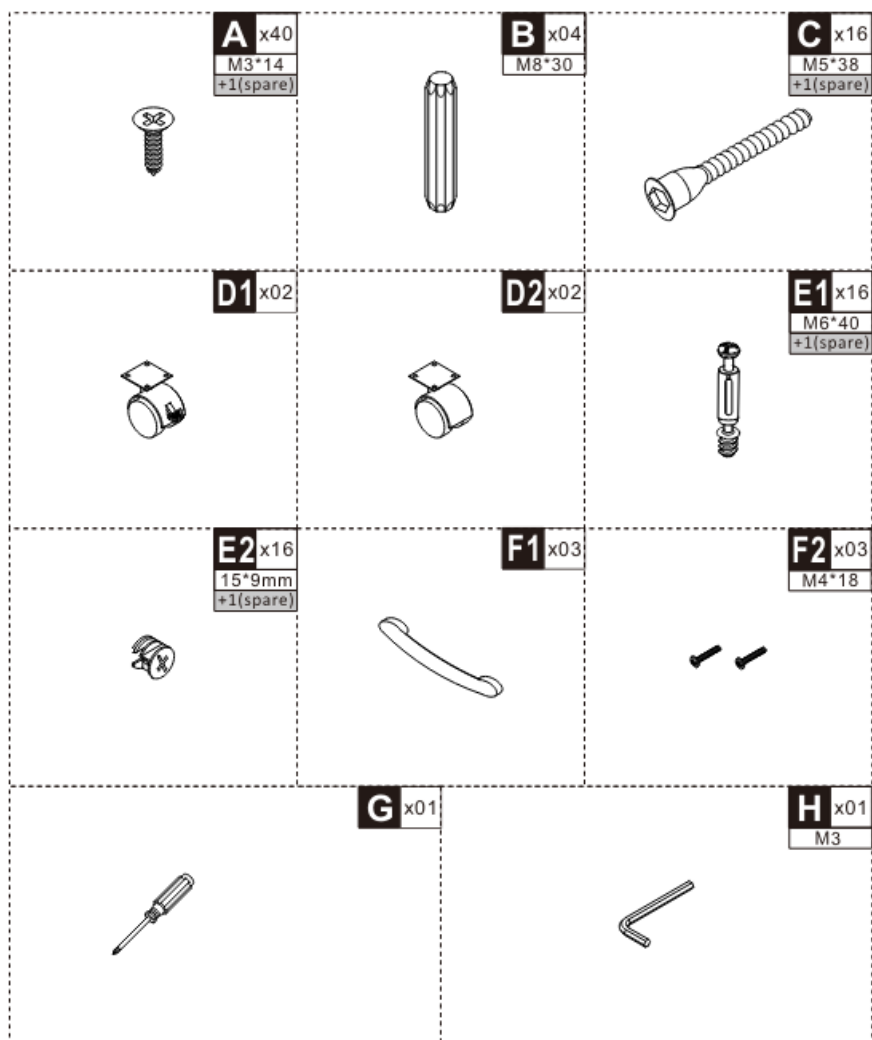


PARTS





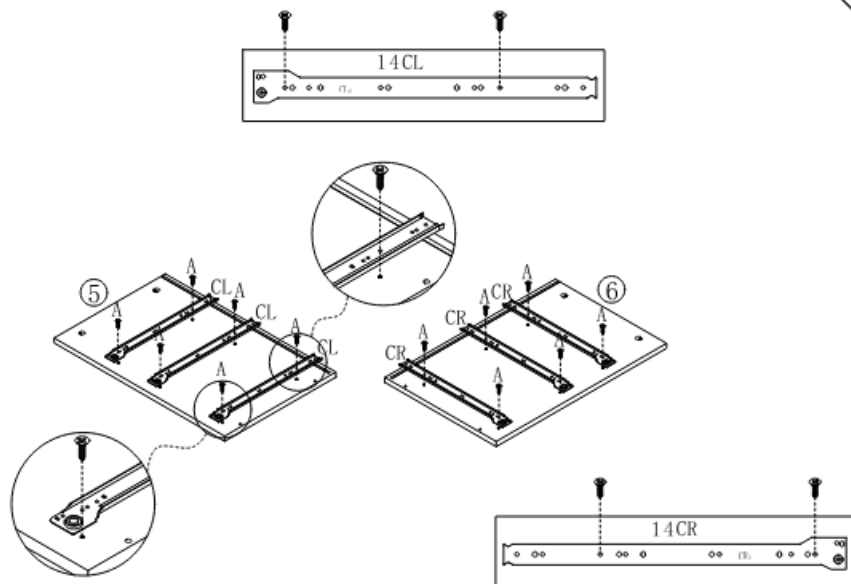
HARDWARE



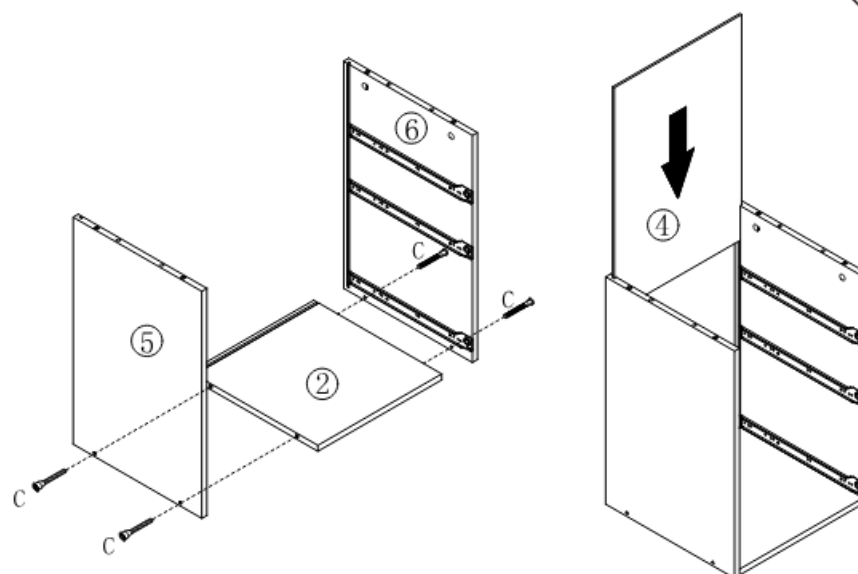
NOTE: Do not confuse similar screws.

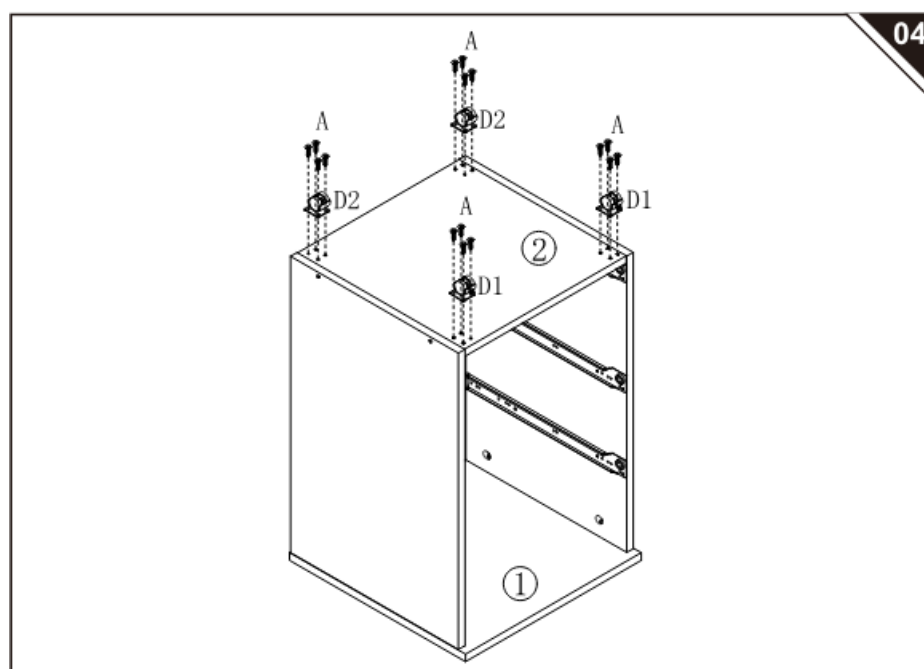
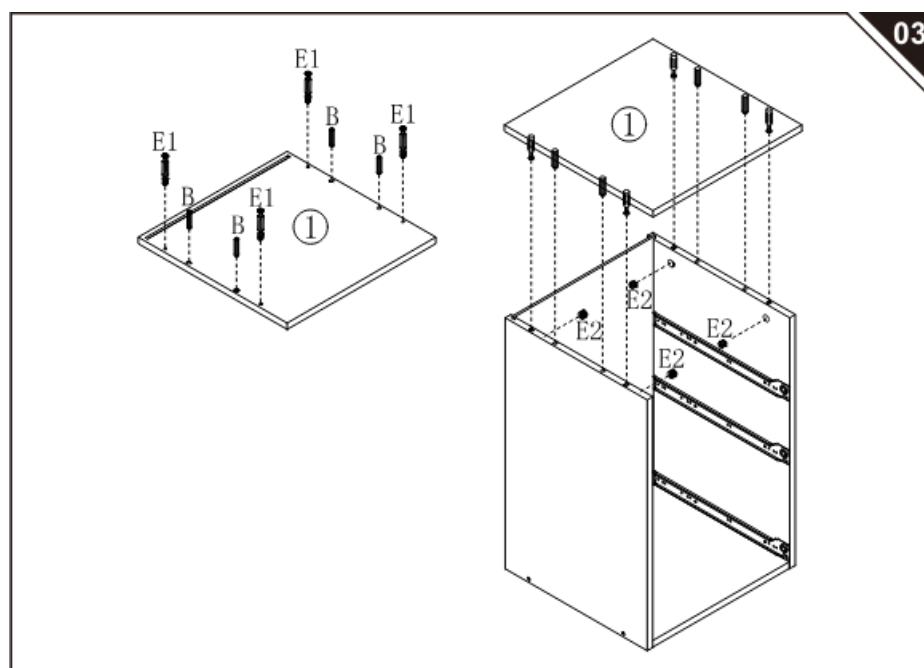
Assembly Instruction

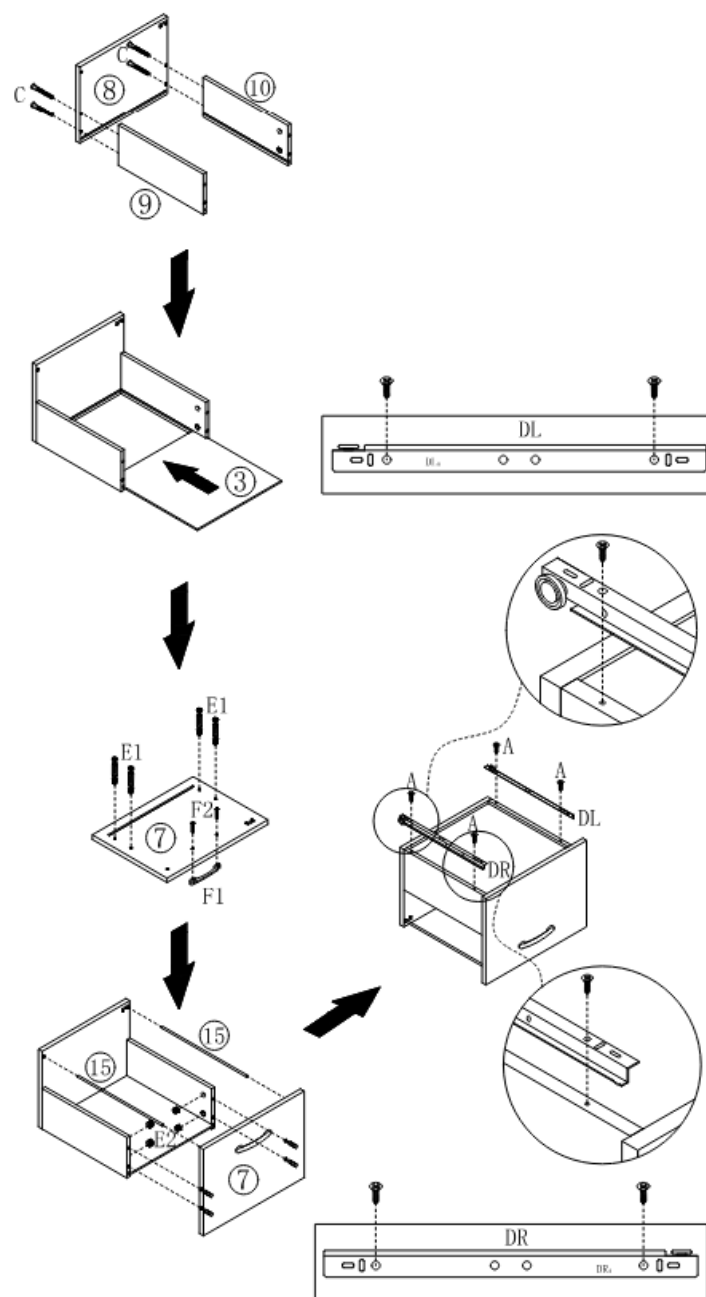
01

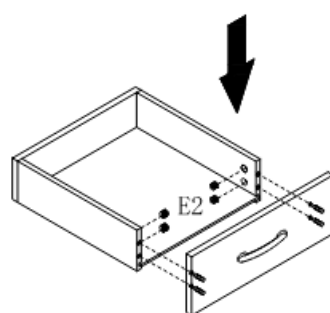
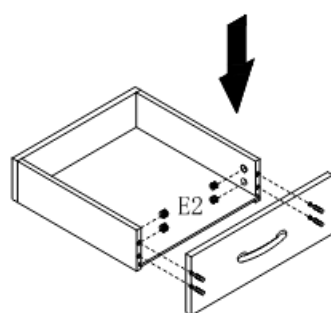
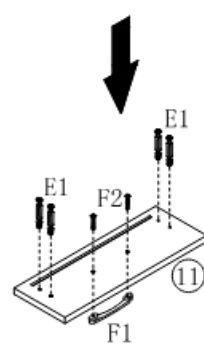
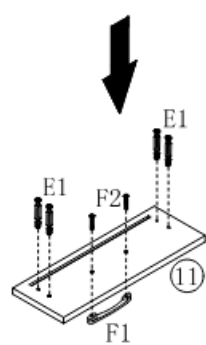
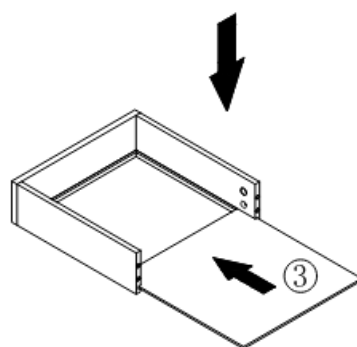
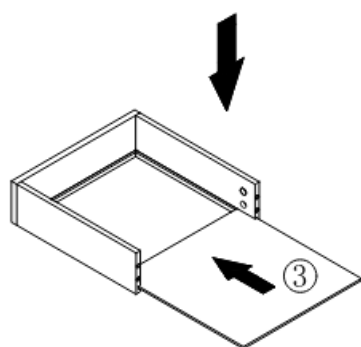
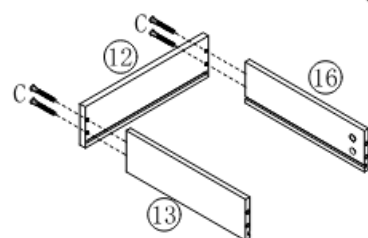
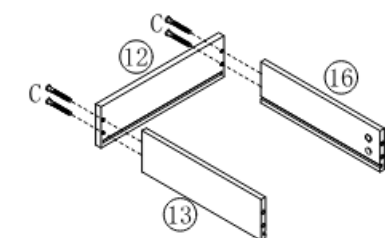


02

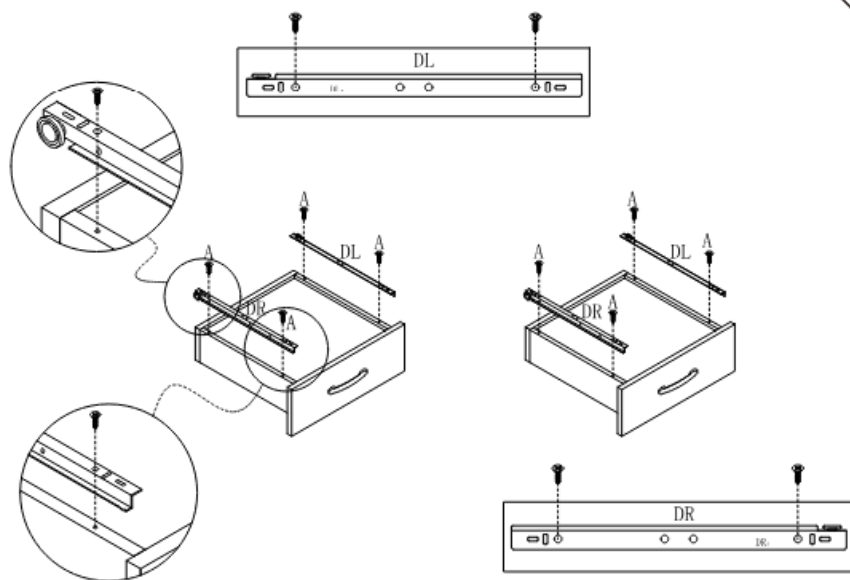




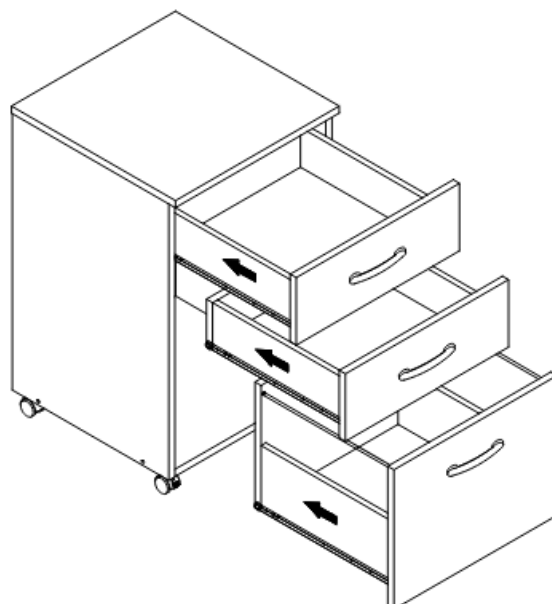


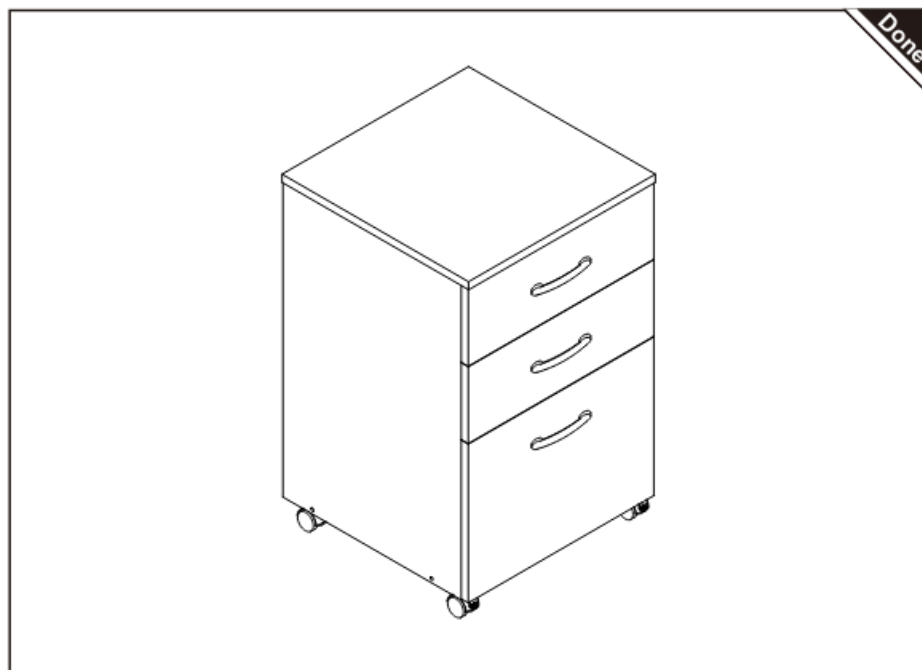
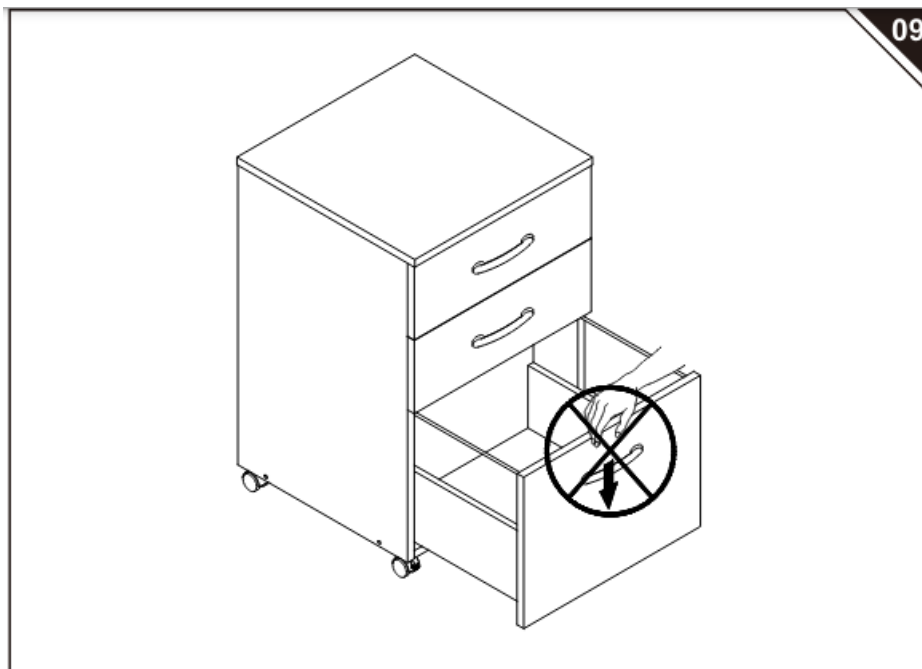


07



08





Imported by Aosom LLC

27150 SW Kinsman Rd Wilsonville, OR 97070 USA

MADE IN CHINA

FAQ

Q: How do I reset the product if it stops working?

A: To reset the product, locate the reset button on the back and press it using a small pin or paper clip.


Q: Can I use this product outdoors?

A: This product is designed for indoor use only. Avoid exposing it to moisture or extreme weather conditions.

Q: What should I do if the product emits a strange odor?

A: If you notice any unusual odors coming from the product, unplug it immediately and contact customer support for assistance.

Documents / Resources

	<p>HOMCOM 924-085V00 3 Drawer Storage Unit Table [pdf] Instruction Manual</p> <p>924-085V00 3 Drawer Storage Unit Table, 3 Drawer Storage Unit Table, Storage Unit Table, Unit Table, Table</p>
---	---

References

- [User Manual](#)

[Manuals+](#), [Privacy Policy](#)

This website is an independent publication and is neither affiliated with nor endorsed by any of the trademark owners. The "Bluetooth®" word mark and logos are registered trademarks owned by Bluetooth SIG, Inc. The "Wi-Fi®" word mark and logos are registered trademarks owned by the Wi-Fi Alliance. Any use of these marks on this website does not imply any affiliation with or endorsement.