

HOMCOM 836-092 Computer Desk Office Table



HOMCOM 836-092 Computer Desk Office Table Installation Guide

[Home](#) » [HOMCOM](#) » HOMCOM 836-092 Computer Desk Office Table Installation Guide 

Contents

- [1 HOMCOM 836-092 Computer Desk Office Table](#)
- [2 Product Information](#)
- [3 Product Usage Instructions](#)
- [4 PRE-FIX DRAWER RUNNER INSTRUCTIONS](#)
- [5 PARTS](#)
- [6 Installation](#)
- [7 Documents / Resources](#)
 - [7.1 References](#)
- [8 Related Posts](#)



HOMCOM 836-092 Computer Desk Office Table



Product Information

This product is a versatile home appliance designed to make your daily tasks easier and more efficient. With a sleek design and advanced features, it is suitable for a variety of uses in the kitchen.

Specifications

- Model: IN231100385V01_GL_836
- Dimensions: 18 x 7 x 38 inches
- Weight: 2 AA
- Power: 8
- Color: White

Product Usage Instructions

Setup

1. Unbox the product carefully and ensure all parts are included.
2. Place the appliance on a flat, stable surface in your desired location.
3. Connect the power cord to a suitable power outlet.

Operation

1. Turn on the appliance using the power button located on the control panel.
2. Select the desired settings using the intuitive interface.
3. Follow the specific instructions for the task you wish to perform (e.g., cooking, blending).

Cleaning and Maintenance

1. Always unplug the appliance before cleaning.
2. Use a damp cloth with mild detergent to wipe the exterior surfaces.
3. Refer to the user manual for specific maintenance instructions to ensure product longevity.

FAQs

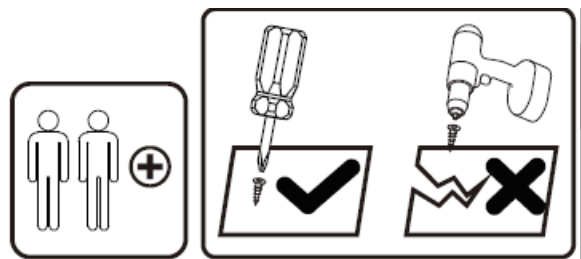
• Q: How do I troubleshoot if the appliance is not working?

A: Check the power source, ensure all connections are secure, and refer to the troubleshooting section in the user manual for further guidance.

• Q: Can this product be used for both hot and cold food preparation?

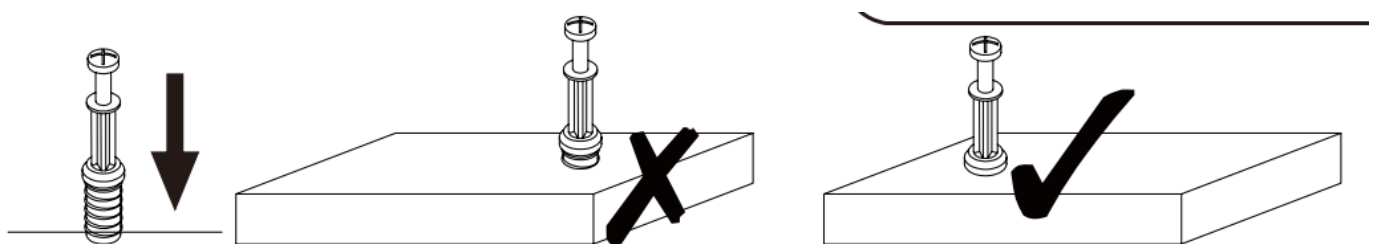
A: Yes, this product is designed to handle both hot and cold food preparation tasks. Ensure proper cleaning between uses for hygiene.

Tools

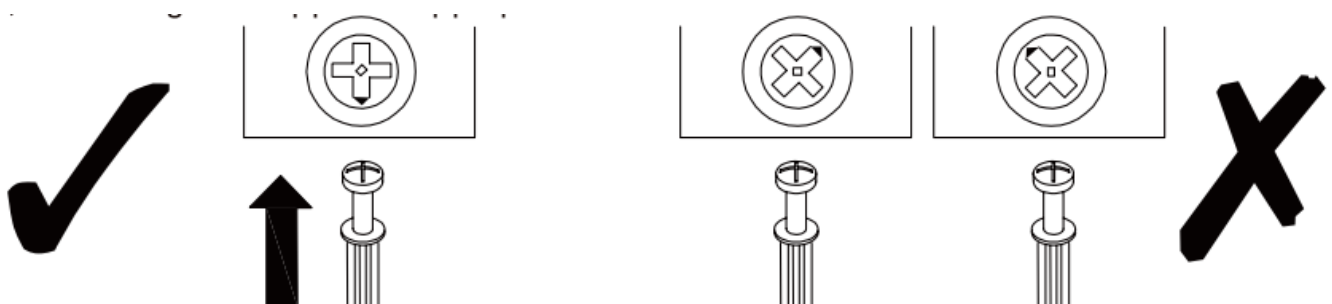


IMPORTANT, RETAIN FOR FUTURE REFERENCE: READ CAREFULLY.

USING CAM LOCK AND QUICKFIT

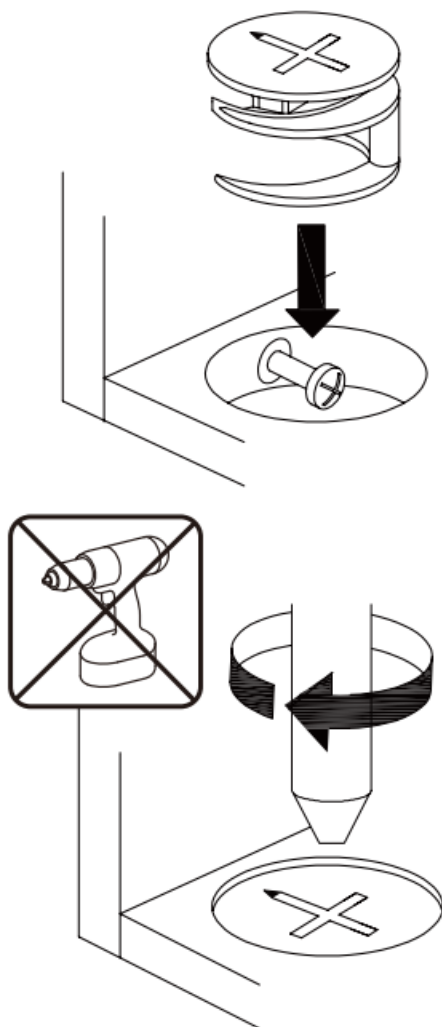


QUICK FIT: Tighten quickfit until shoulder is flush with panel. Do not overtighten or undertighten.



CAM LOCK:When fitting cam lock, ensure starting position is correct before you insert connecting quickfit.

Quickfit head should be in the centre of the cam lock when the two panels are joined.
Cam lock should be inserted before quickfit.

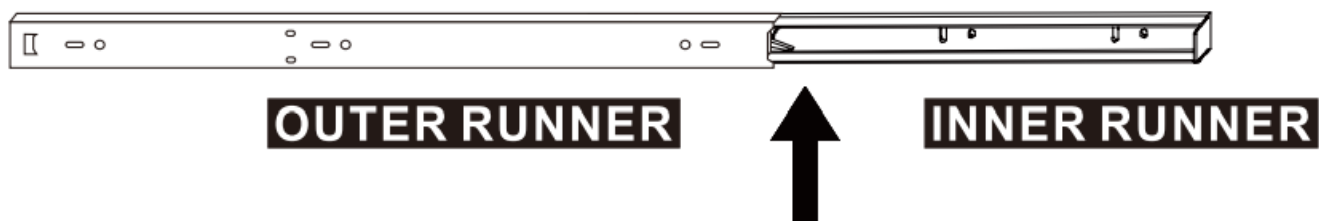


PRE-FIX DRAWER RUNNER INSTRUCTIONS

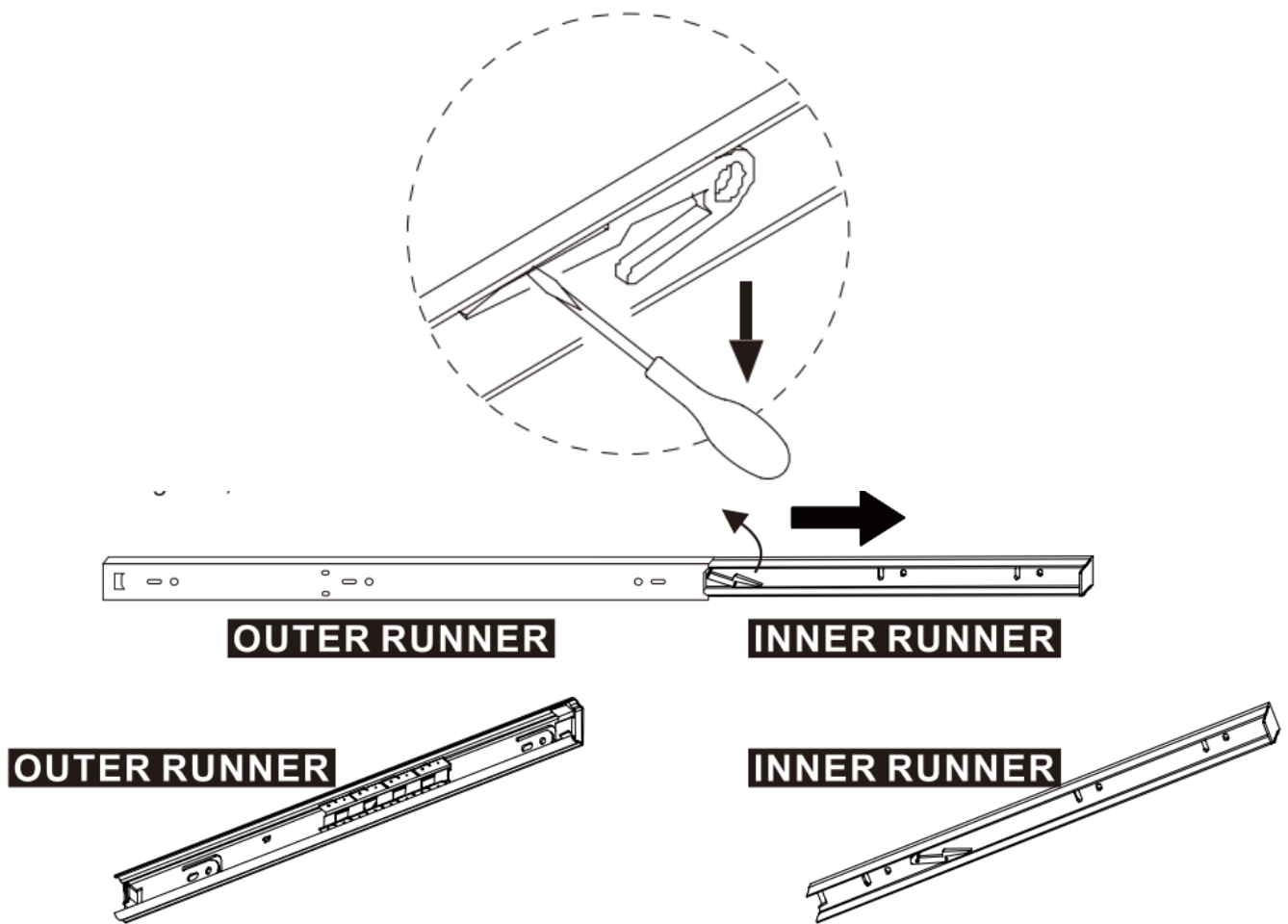
NOTE: Pull inner and outer drawer runners apart before fixing them to panels.



Slide drawer runners apart until the drawer lock can be seen, as shown.

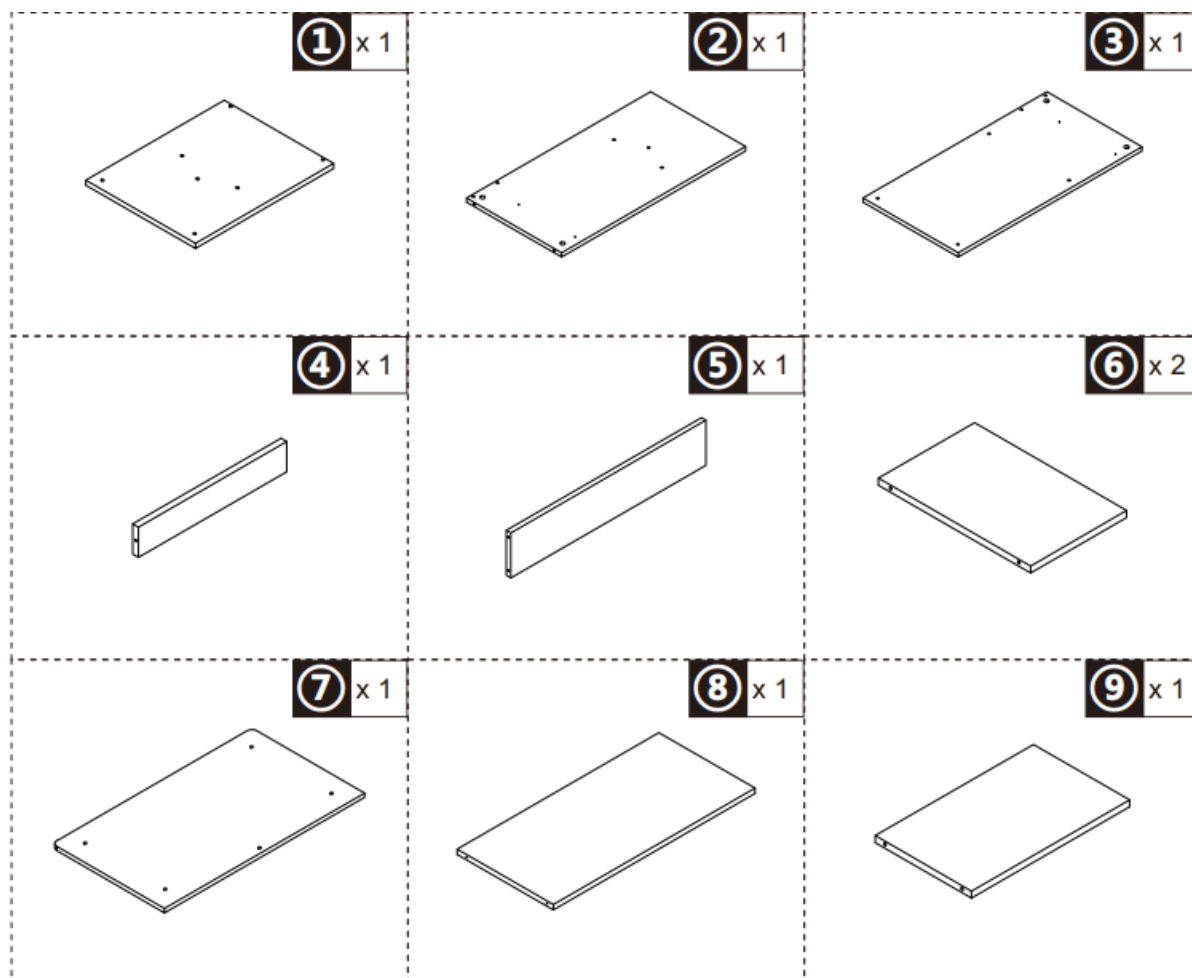


Press and hold the drawer runner lock and then continue to slide drawer runners apart, as shown.

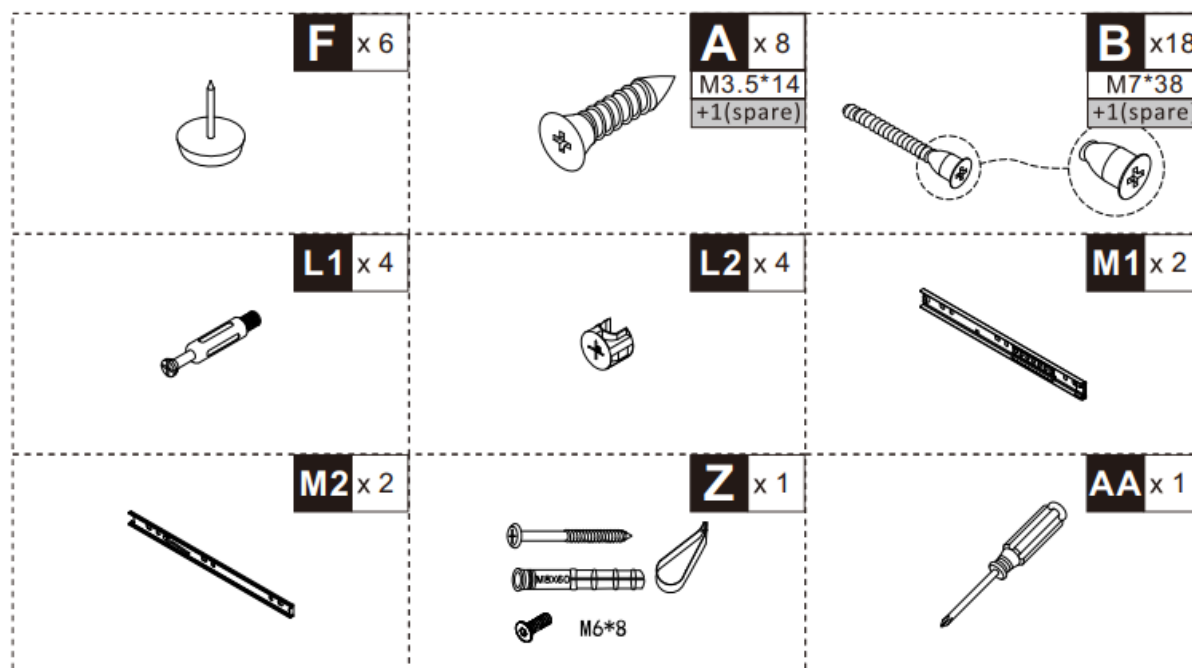


Your inner and outer drawer runners are ready to be fixed to panels.

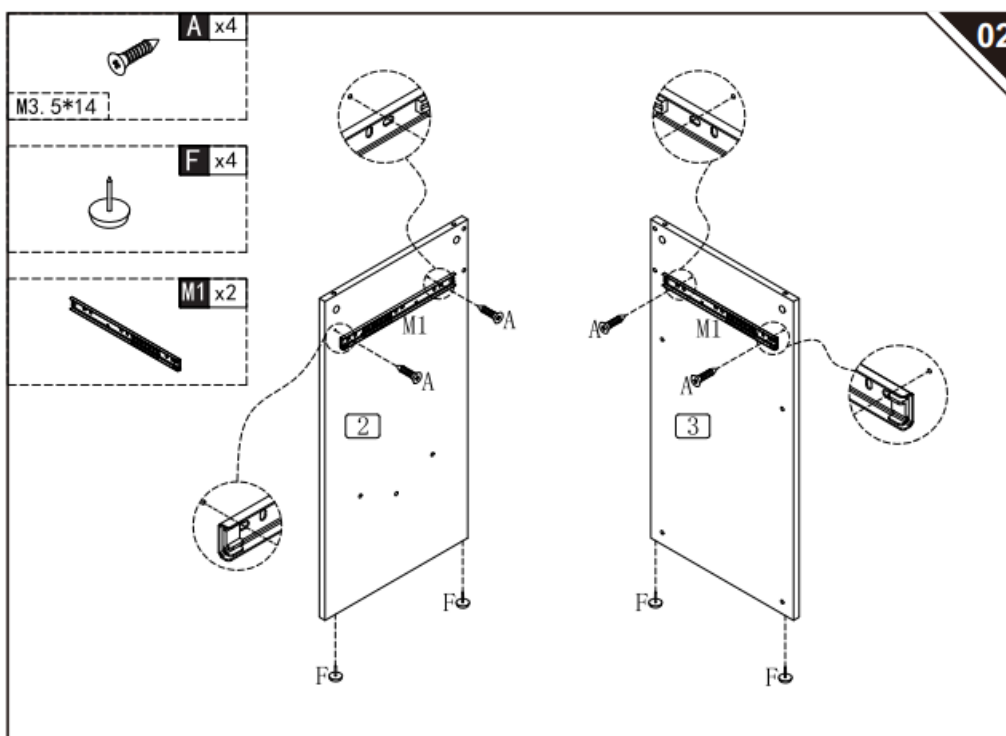
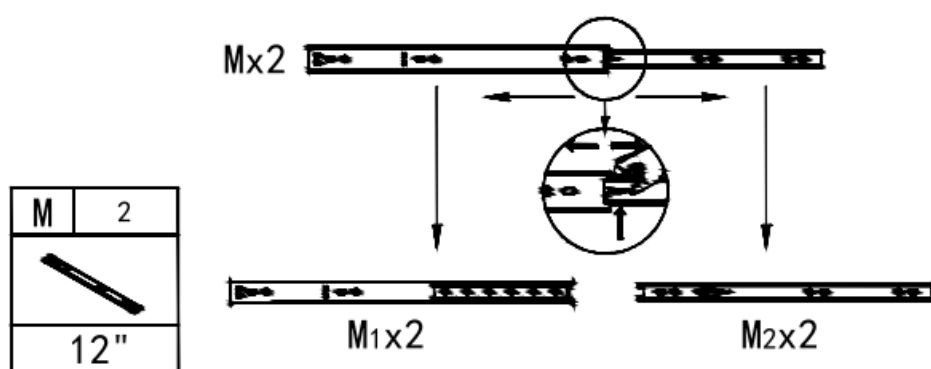
PARTS

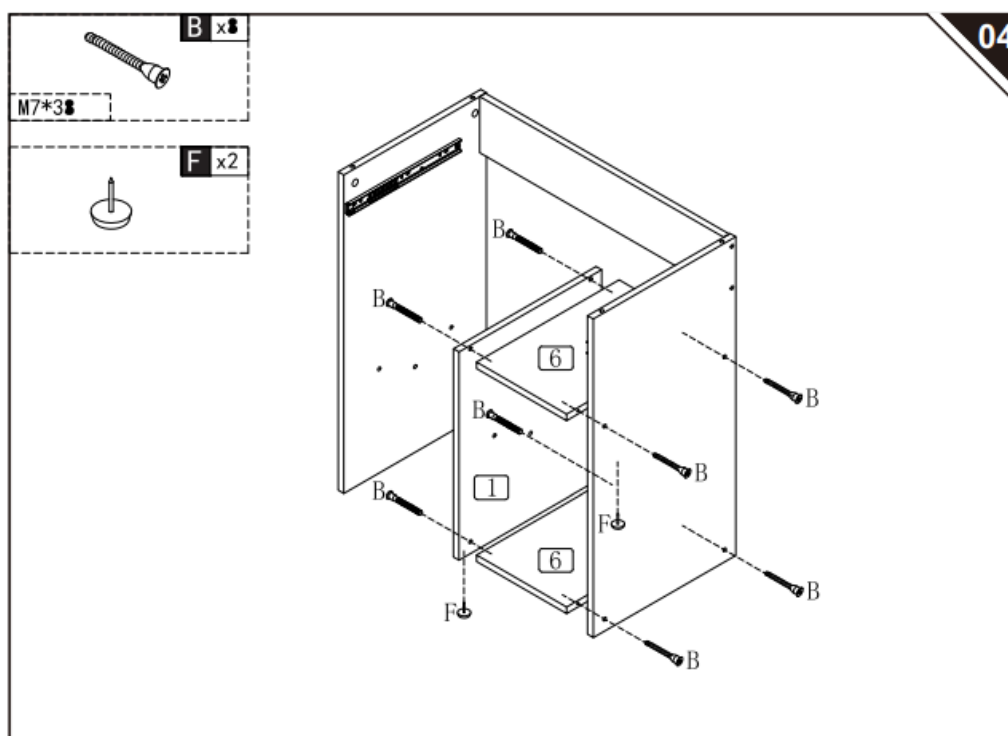
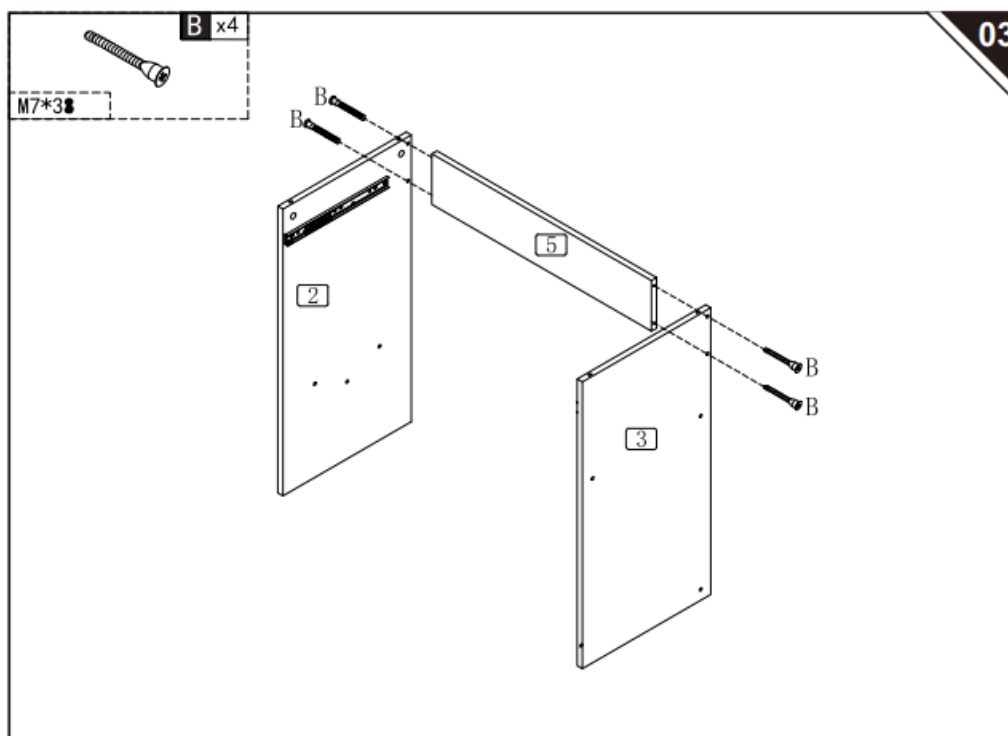


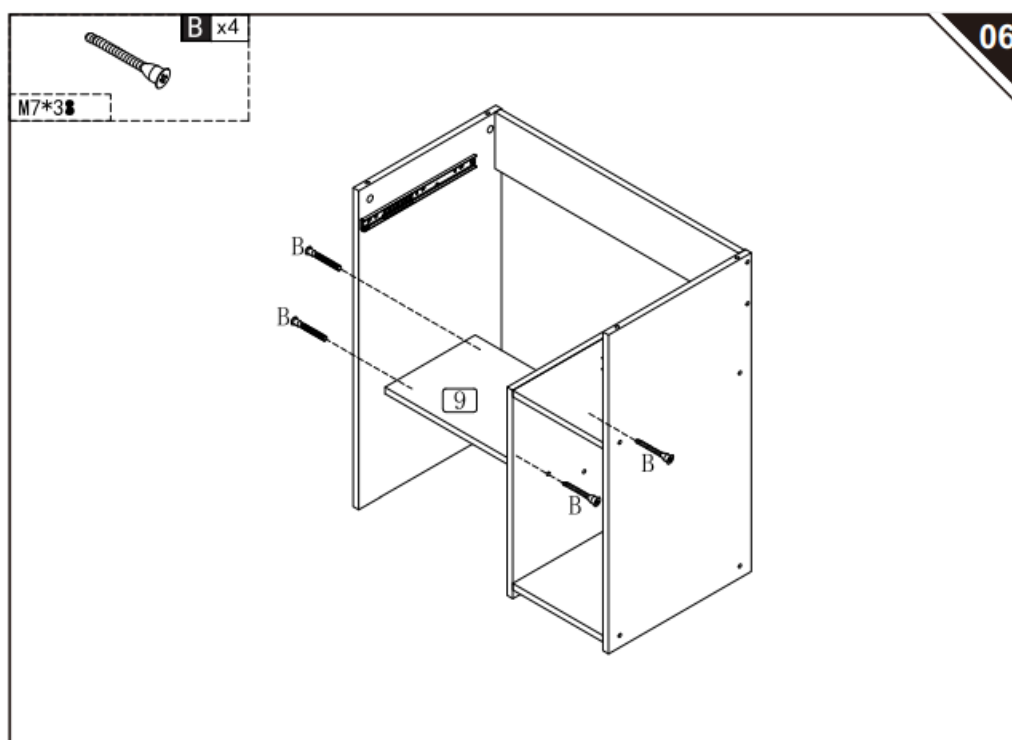
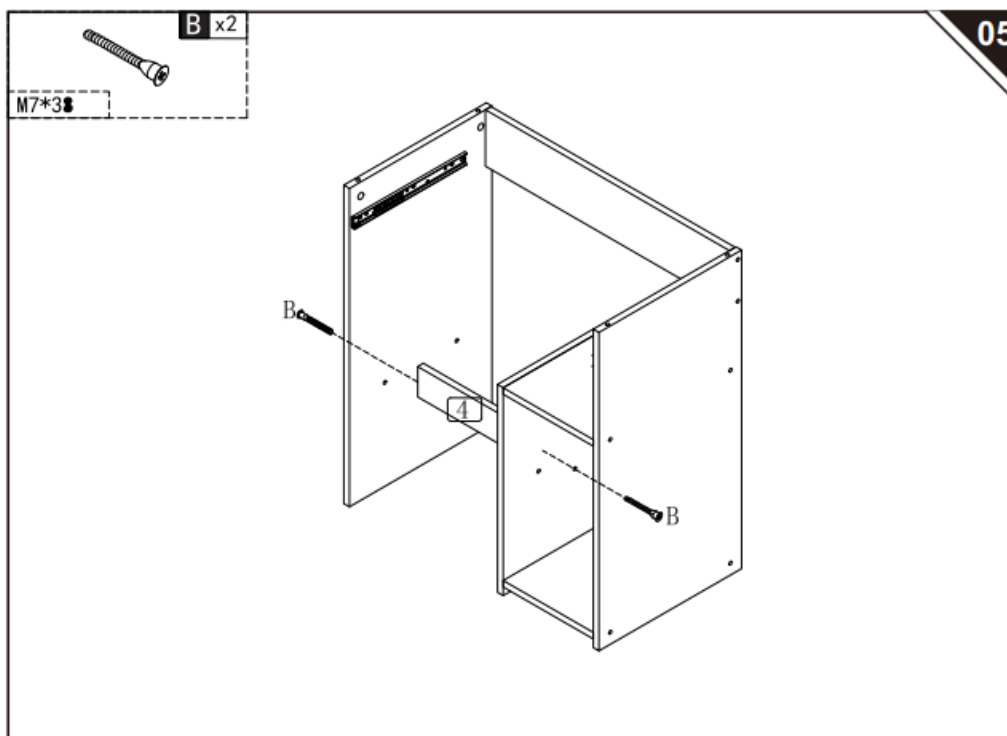
HARDWARE

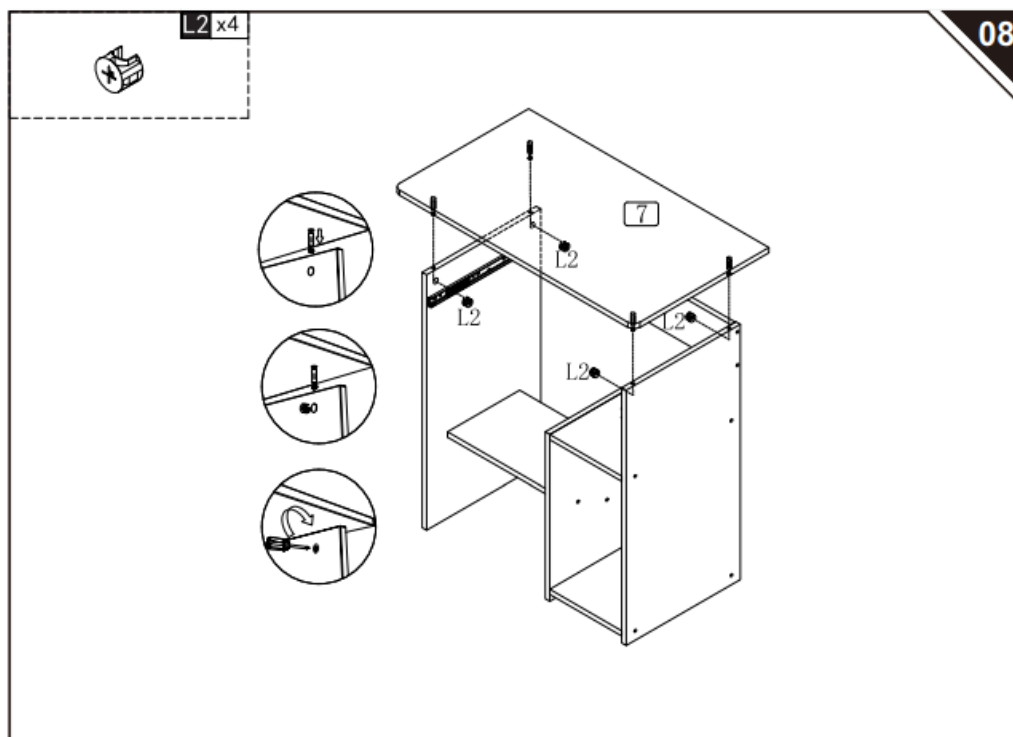
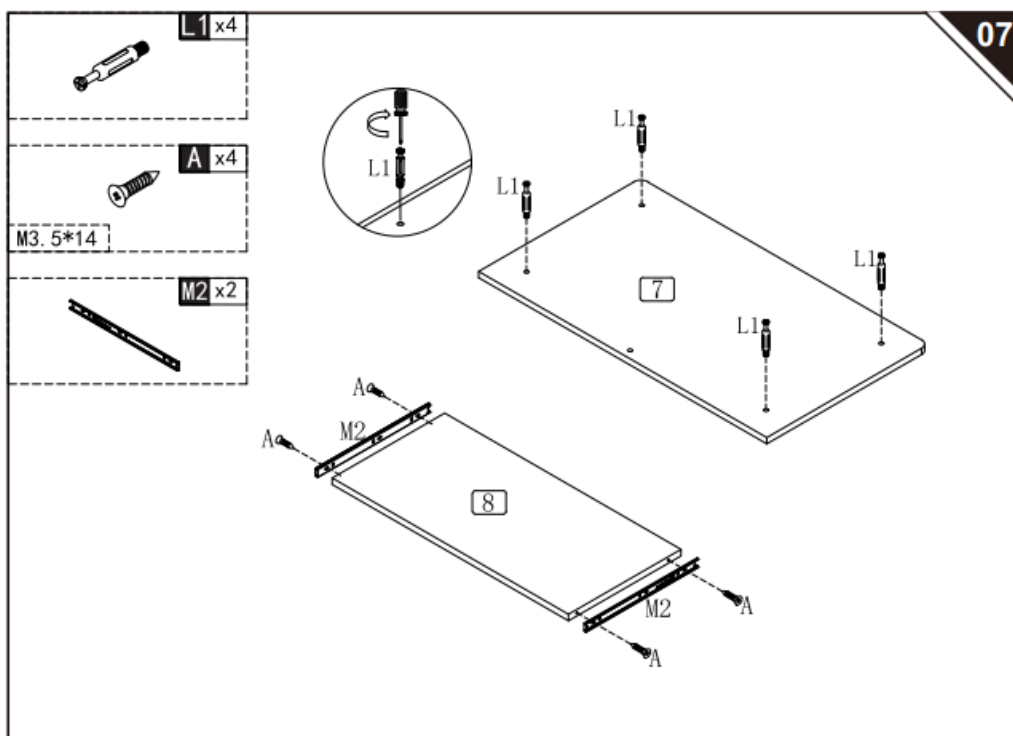


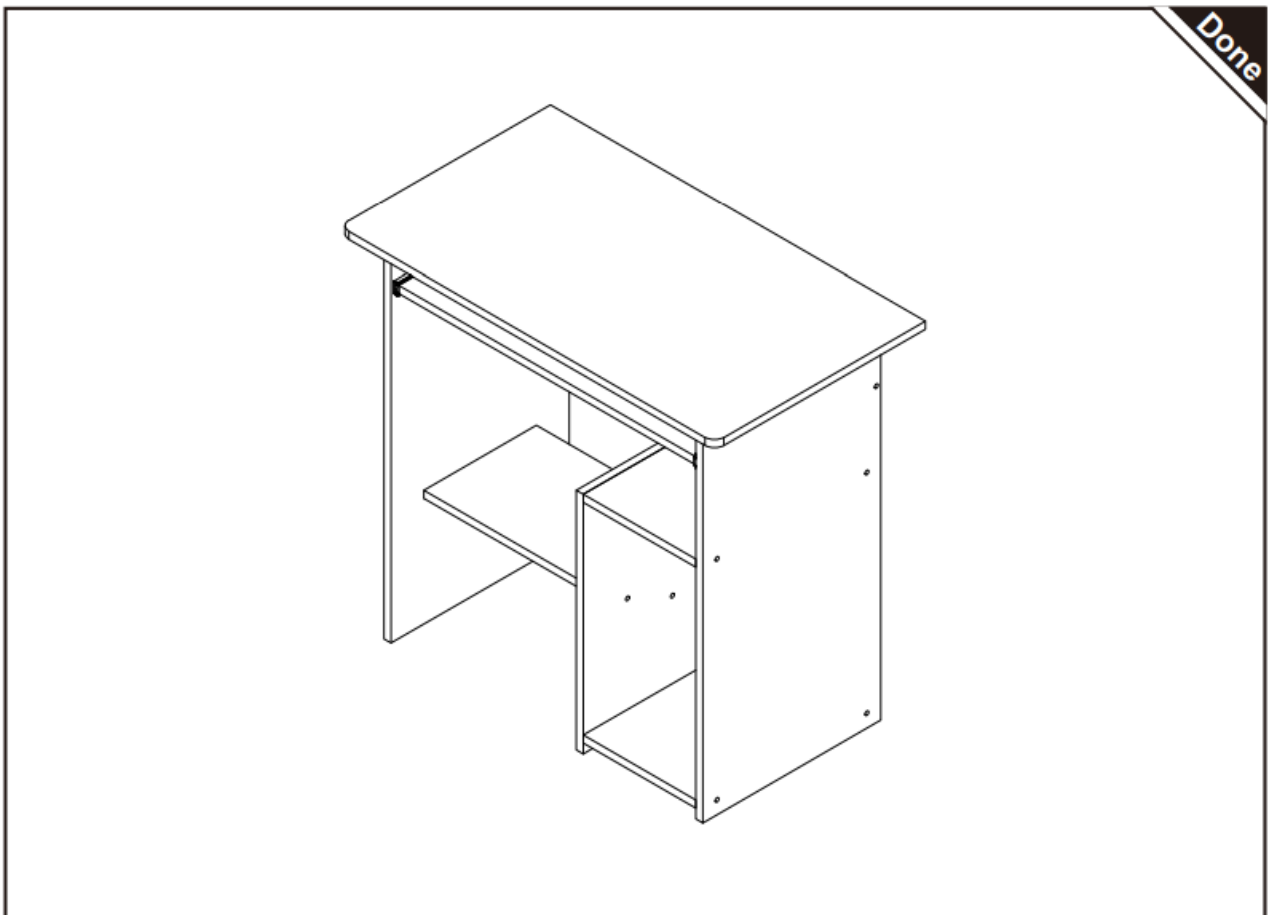
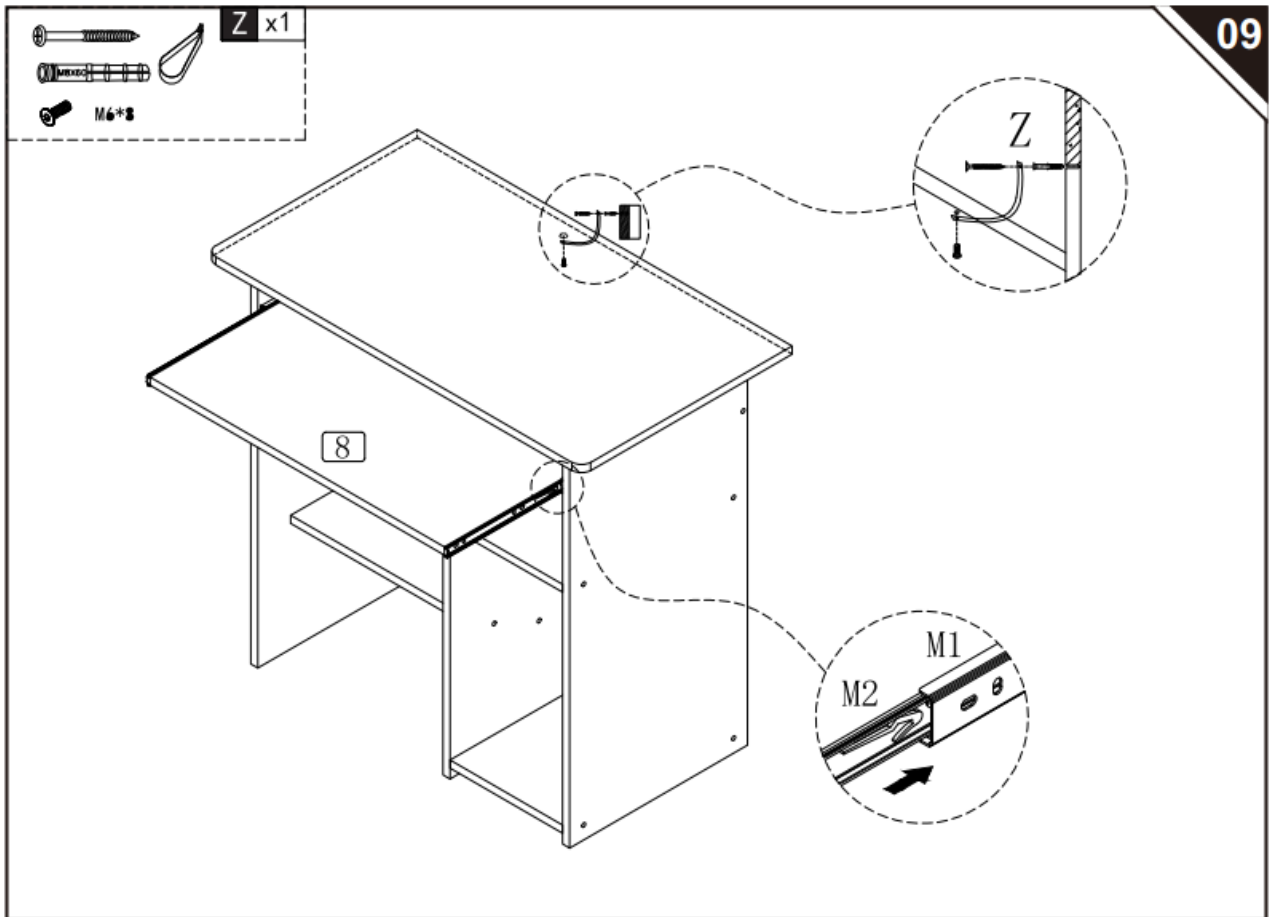
Installation












If you have any questions, please contact our customer care center. Our contact details are below: 0044- [800-240-4004](tel:8002404004) enquiries@mhstar.co.uk

IMPORTER ADDRESS: MH STAR UK LTD Unit 27, Perivale Park, Horsenden lane South Perivale, UB6 7RH
MADE IN CHINA

Documents / Resources

	<p>HOMCOM 836-092 Computer Desk Office Table [pdf] Installation Guide 836-092, 836-092 Computer Desk Office Table, Computer Desk Office Table, Desk Office Table , Office Table, Table</p>
---	--

References

- [User Manual](#)

Manuals+, Privacy Policy

This website is an independent publication and is neither affiliated with nor endorsed by any of the trademark owners. The "Bluetooth®" word mark and logos are registered trademarks owned by Bluetooth SIG, Inc. The "Wi-Fi®" word mark and logos are registered trademarks owned by the Wi-Fi Alliance. Any use of these marks on this website does not imply any affiliation with or endorsement.