



HOMCOM 831-597V00 Button Down Bench Design Instruction Manual

[Home](#) » [HOMCOM](#) » HOMCOM 831-597V00 Button Down Bench Design Instruction Manual 

Contents

- [1 HOMCOM 831-597V00 Button Down Bench Design](#)
- [2 Product Information](#)
- [3 Product Usage Instructions](#)
- [4 Maintenance](#)
- [5 Documents / Resources](#)
 - [5.1 References](#)
- [6 Related Posts](#)



HOMCOM 831-597V00 Button Down Bench Design



Specifications

- Model: IN230300170V01_GL
- Manual Version: INcac026_UK_FR_ES_DE_IT_831-597V00
- Supported Regions: US, CA

Product Information

The product is designed to assist in assembly tasks by providing clear instructions and guidelines for connecting parts securely. It includes different components labeled with alphanumeric characters for easy identification. The manual emphasizes the importance of not confusing similar screws and advises against fully tightening bolts until all parts are properly connected to avoid misalignment.

Product Usage Instructions

Assembly Guidelines

Follow the alphanumeric labeling on the components to ensure correct assembly.

Screw Handling

Avoid confusing similar screws to prevent incorrect installations.

Bolts Tightening

Do not fully tighten bolts until all parts are connected to maintain balance and alignment.

Balancing

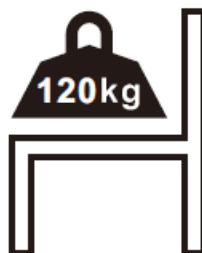
Ensure that the product is balanced during assembly to prevent instability.

FAQ

- **Q: Why is it important not to confuse similar screws?**
 - A: Confusing similar screws can lead to incorrect assembly, affecting the stability and functionality of the product. Always double-check the labeling before installation.

IN230300170V01_GL



INcac026_UK_FR_ES_DE_IT_831-597V00



IMPORTANT, RETAIN FOR FUTURE REFERENCE: READ CAREFULLY.

Dear customer,
Thank you for purchasing this product. So that your appliance serves you well, please read all the instructions in

this user's manual. If you have any questions, please contact our customer care center, Our contact details are below

Country	 Phone	 Email
us	001- 877-644-9366	customerservice@aosom.com
CA	416-792-6088	customerservice@aosom.ca
UK	0044- 800-240-4004	enquiries@mhstar.co.uk
DE	0049-0(40)-88307530	service@aosom.de
FR	0033-1-84166106	aosom@mhfrance.fr
ES	0034-931294512	atencioncliente@aosom.es
PT	0034-931294512	info@aosom.pt
IT	0039-02494 71447	clienti@aosom.it

IMPORTANT, RETAIN FOR FUTURE REFERENCE: READ CAREFULLY.

Only for domestic use

Instructions for use

- Put the chair stably on a flat floor.
- Stay away from open flames.
- Avoid the overload at the chair.

Precautions before assembly

- Prepare a clean and dry mounting area.
- Verify that the product is not damaged.
- Check that none of the pieces are missing.

Maintenance

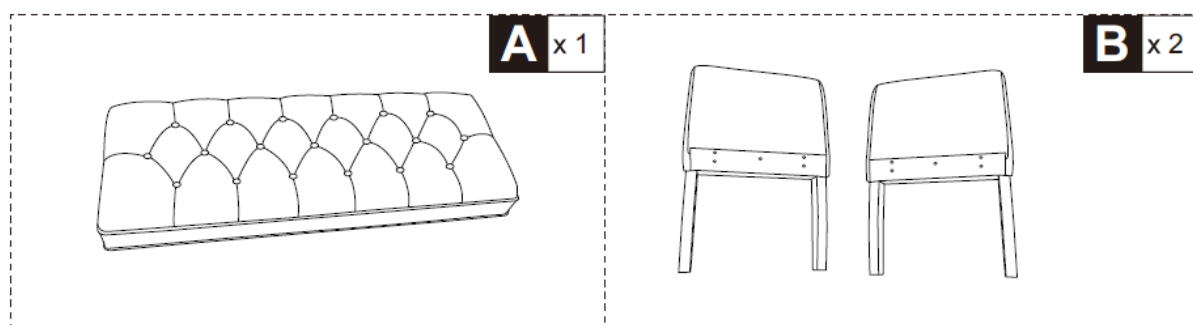
- Clean with a soft fabric.
- Check the seating regularly.

Storage conditions

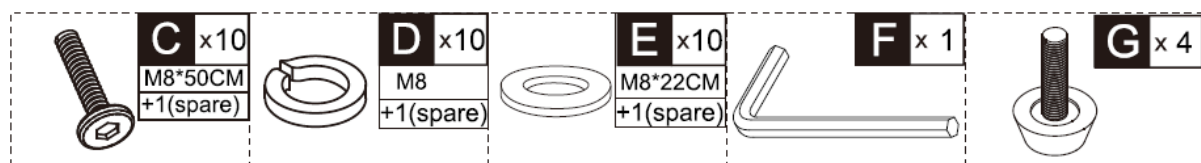
The fabric should be stored completely dry, in a clean and dry place to avoid the risks of mold.

- Beware of crushing and cutting hazards during assembly.
- The manufacturer declines all responsibility in case of damages due to a bad installation or withering.
- If the seating is fitted with powered seat height adjustments, only trained personnel may replace or repair those components.

PARTS

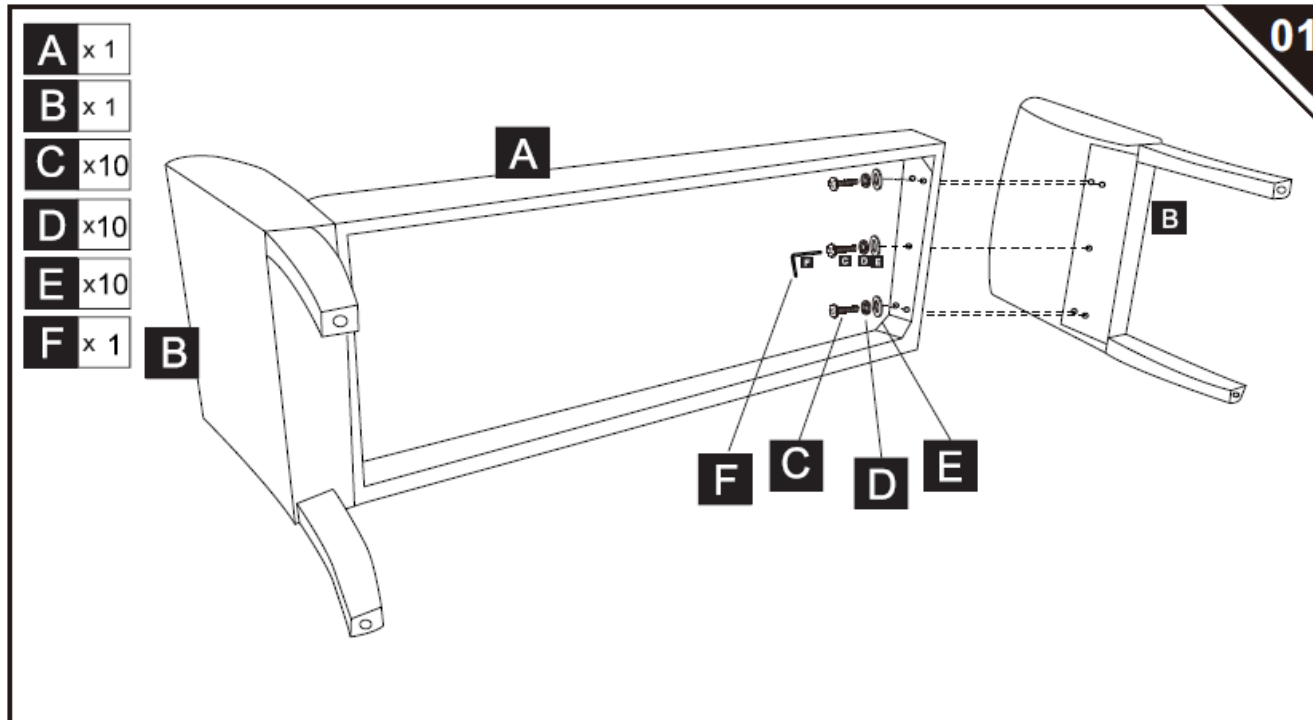


HARDWARE



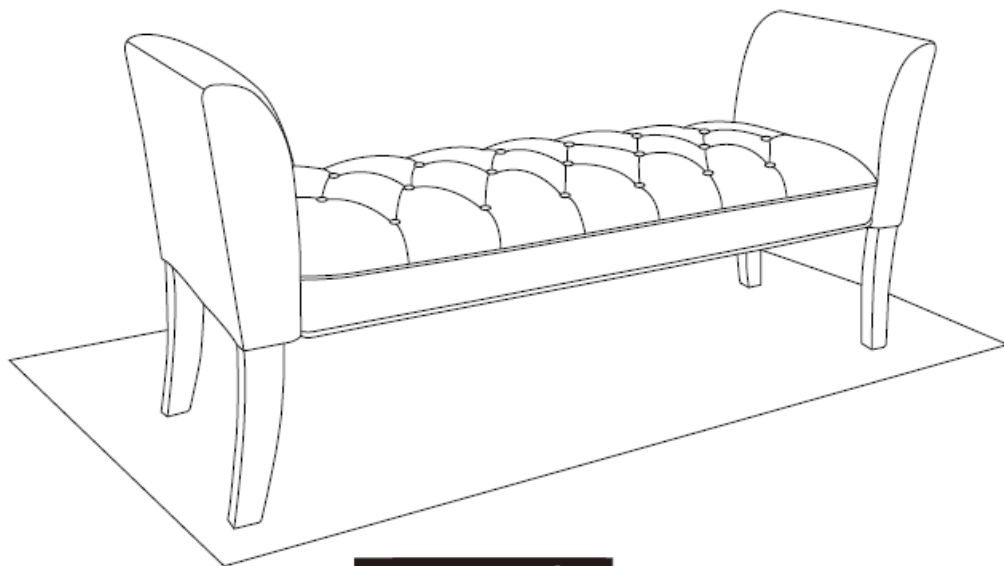
Do not confuse similar screws. Do not tighten bolts fully until all parts are connected!

01

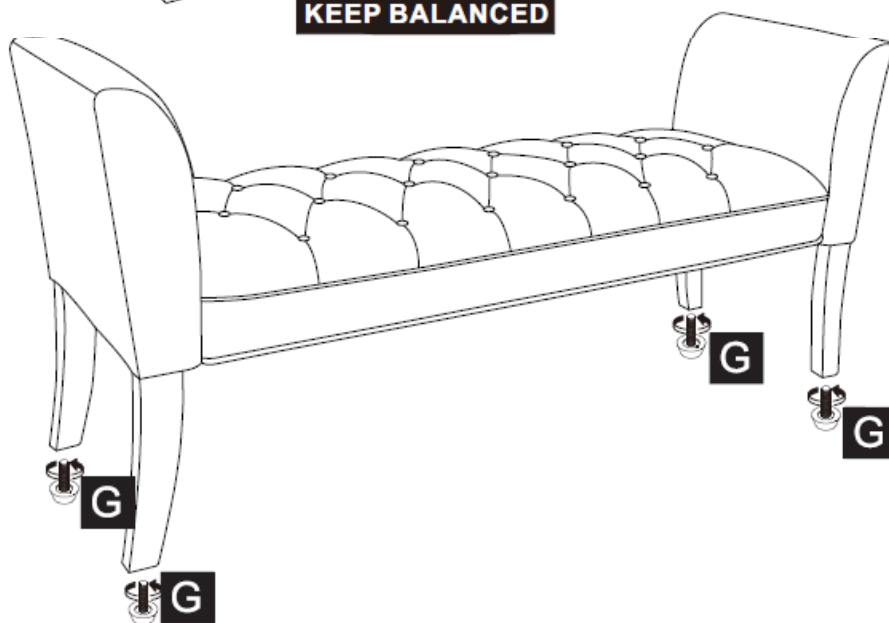


G x 4

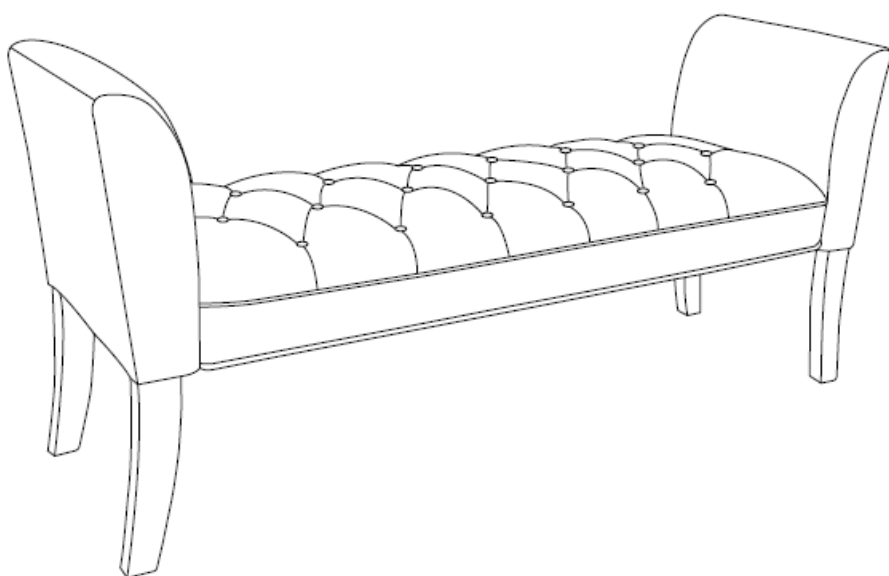
02



KEEP BALANCED




Done



- Imported by Aosom
- LLC 27150 SW Kinsman Rd Wilsonville, OR 97070

- USA
- MADE IN CHINA

Documents / Resources

	<p>HOMCOM 831-597V00 Button Down Bench Design [pdf] Instruction Manual 831-597V00, 120, 831-597V00 Button Down Bench Design, 831-597V00, Button Down Bench Design, Down Bench Design, Bench Design, Design</p>
---	---

References

- [User Manual](#)

[Manuals+](#), [Privacy Policy](#)

This website is an independent publication and is neither affiliated with nor endorsed by any of the trademark owners. The "Bluetooth®" word mark and logos are registered trademarks owned by Bluetooth SIG, Inc. The "Wi-Fi®" word mark and logos are registered trademarks owned by the Wi-Fi Alliance. Any use of these marks on this website does not imply any affiliation with or endorsement.