



HOMECLOUD SP-SW3R 3 Gang WiFi Smart Switch User Manual

[Home](#) » [HOMECLOUD](#) » HOMECLOUD SP-SW3R 3 Gang WiFi Smart Switch User Manual 

Contents

- [1 HOMECLOUD SP-SW3R 3 Gang WiFi Smart Switch](#)
- [2 WIRING DIAGRAMS](#)
 - [2.1 General wiring connections to support one/two/three gang switches](#)
 - [2.2 INSTALL APP AND REGISTER AN ACCOUNT](#)
- [3 FAQ](#)
- [4 Documents / Resources](#)
- [5 Related Posts](#)



HOMECLOUD SP-SW3R 3 Gang WiFi Smart Switch



1. PRODUCT REVIEW

Turn your DUMB switches Smart and control them from anywhere in the world. The Smart Wi-Fi Switch module supports up to three gang switches in one-way and two-way wiring system and turns any traditional switch control into smart and wireless control while keeping traditional manual control intact.

Control connected loads and lights from anywhere using Wi-Fi, an internet connection and the Homcloud Smart app; that is all you need, no hub required.

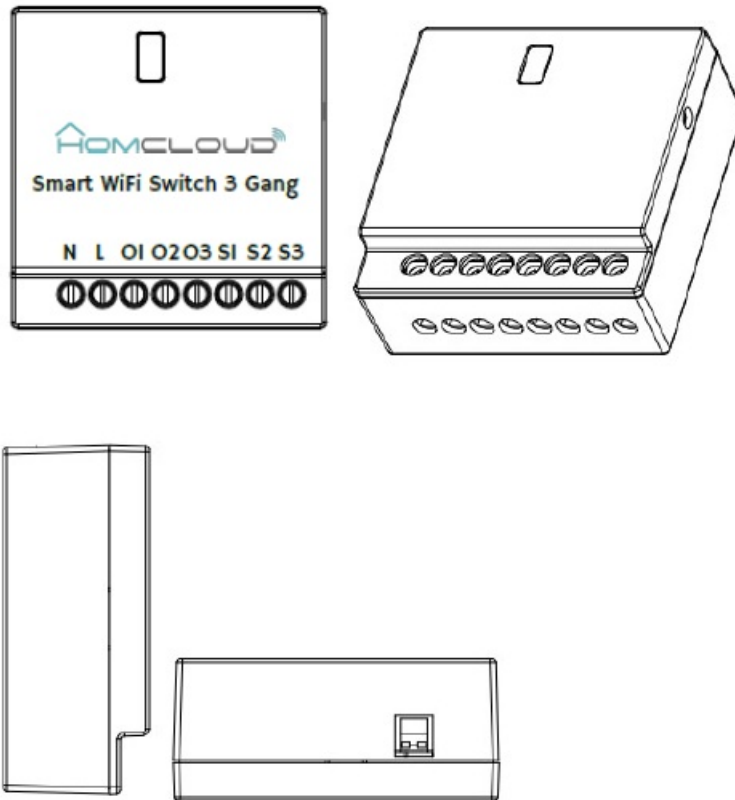
Simplify control of your home – schedule lights and connected loads to turn on/off at specific times or based on sunrise/sunset, easily group smart devices into rooms, and create scenes to activate multiple lights or switches at once.

2. PRODUCT FEATURES

- Works with 802.11 b/g/n 2.4GHz wireless network (no hub required);
- Wi-Fi network configuration with EZ (Smart Config) and AP(Access Point) mode;
- Supports up to 3-gang switches using DIP switch;
- Supports Max load up to 230V/10A
- Use Switch 1 to configure Wi-Fi network
- Supports OTA upgrade
- Supports device sharing with family;
- CE certified;
- Works with Amazon Alexa, Google Home and IFTTT;
- **CAUTION:**
 - DO NOT TOUCH ANY CABLE WHEN THE ELECTRIC CURRENT IS ACTIVE
 - DO NOT WET OR KEEP HUMIDITY AND SOURCES CLOSE
 - MAXIMUM TOTAL CURRENT 10 A. DO NOT EXCEED THE RECOMMENDED LIMITS.
 - MAXIMUM POWER 2300 W. DO NOT EXCEED THE RECOMMENDED LIMITS.
 - KEEP OUT OF REACH OF CHILDREN
 - USE ONLY IN THE INDOOR ENVIRONMENT
 - INSTALLATION OF THE DEVICE MUST BE CARRIED OUT BY A PROFESSIONAL INSTALLER OR ELECTRICIAN

3. PRODUCT DESCRIPTION

Illustration of the 3 gang switch and its components:



- **N:** Neutral Wire input port
- **L:** Live Wire input port
- **O1:** Live Wire output port 1, Light input port 1
- **O2:** Live Wire output port 2, Light input port 2
- **O3:** Live Wire output port 3, Light input port 3
- **S1:** Live Wire input port 1, Switch control output 1
- **S2:** Live Wire input port 2, Switch control output 2
- **S3:** Live Wire input port 3, Switch control output 3
- **Button:** Switching EZ mode (Light bulb flashing quickly) / AP mode (Light bulb flashing slowly) by long press and hold the button for 5 seconds.

3 Gang Switch Configuration

Switch 1 connections are always enabled and by default Switch 2 and Switch 3 connections are also enabled. To enable or disable Switches 2 and 3 connections, please use the DIP Switch settings as shown below

DIP switch configuration

DIP Switch		Wall Switch	
D1	D2	Switch 2 Connections	Switch 3 Connections
1	1	Enabled	Enabled
1	0	Enabled	Disabled
0	0	Disabled	Disable
0	1	Disabled	Enabled

Remark

1. Dial up is 1 and dial down is 0;
2. To configure two way switching, use only wall switch 1, light 1 and wall switch 2, light 2. Wall switch 3 and lights 3 must be disabled.
3. If you want to control the Shadow, please config the DIP switch as D1 = 1, D2 = 0;

4. PRODUCT SPECIFICATIONS

Power supply	230VAC 50Hz – 10A – 2300W
Wireless frequency	2.4GHz ~ 2.484GHz
Network protocol	IEEE802.11 b/g/n
Encryption type	WEP/TKIP/AES,WPS
Antenna	External FPC antenna
Transmitting power	802.11b:17dBm±2dBm@1Mbps 802.11g:15dBm±2dBm@54Mbps 802.11n:13dBm±2dBm@MCS7_HT20
Receiving sensitivity	802.11b:-91dBm@11Mbps 8%PER 802.11g:-75dBm@54Mbps 10%PER 802.11n:-72dBm@MCS7_HT20 10%PER
Vector error EVM	802.11b:≤35% 802.11g:-28dBm max. 802.11n:-28dBm max.@MCS7_HT20
Working temperature	-10 ~ +40°C
Storage temperature	-20 ~ +60°C
Relative humidity	8% ~ 80%

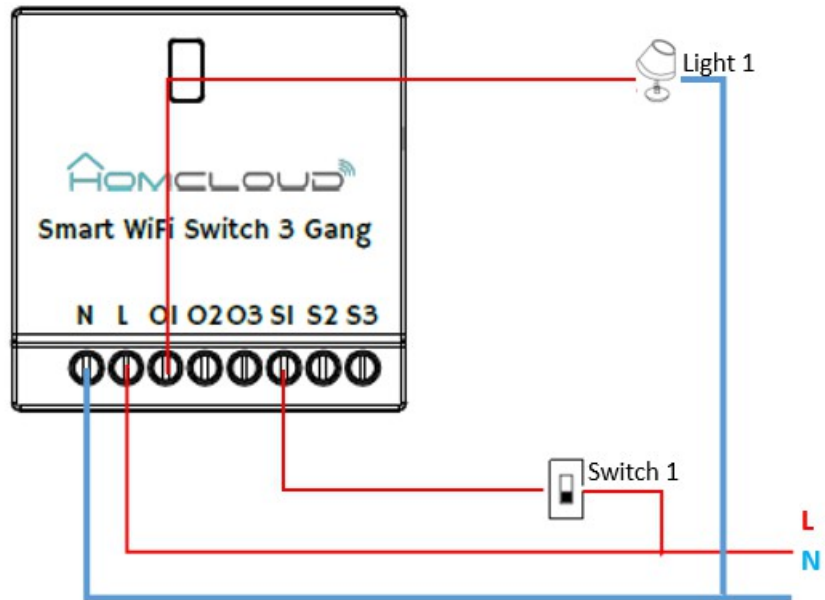
WIRING DIAGRAMS

General wiring connections to support one/two/three gang switches

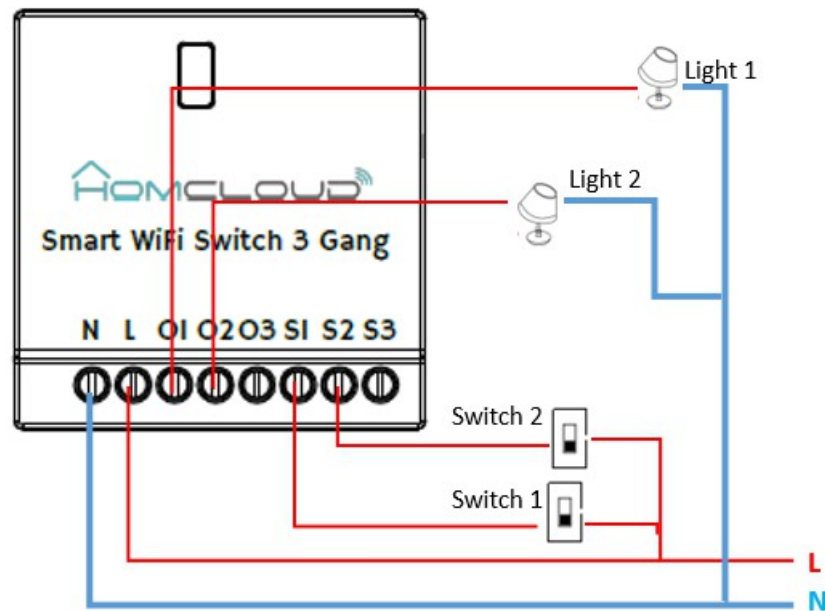
Note: Please disconnect the power before operation Remark:

- Below blue wire is neutral wire(N)
- The red wire is live wire(L)

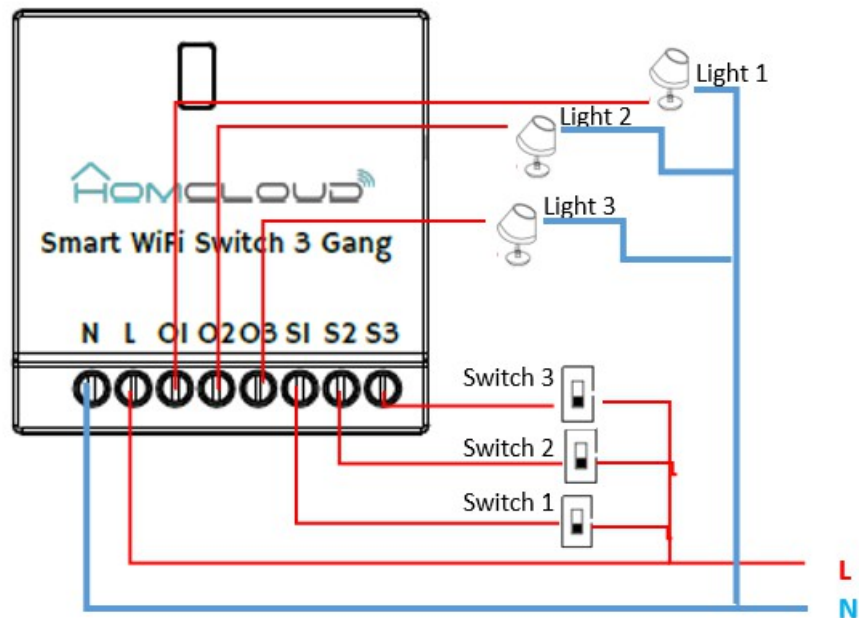
1. Wiring diagram of one way switch:



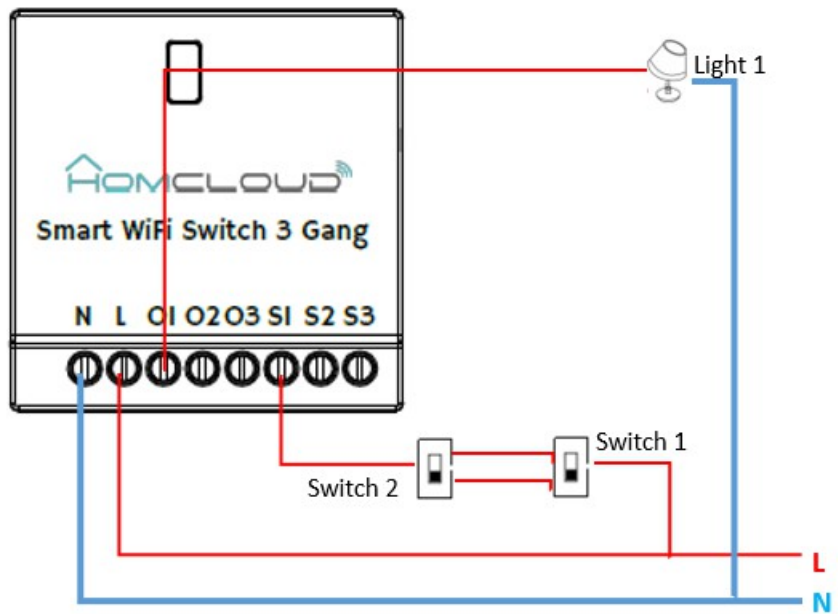
2. Wiring diagram of two way switch:



Remark: The connection of two-way switch is only valid in the above connection mode, and access to O3/S3 is invalid



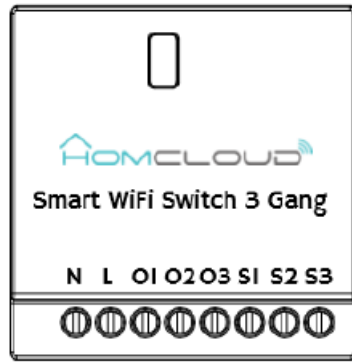
3. Wiring diagram of three way switch:



4. Wiring diagram of single pole dual control switches as Traveler system

Remarks: Two way and three way switch connecting into dual control switch, please refer to one way switch connecting way shown as below.

5. Wiring diagram of AC powered Motor curtain – WITH BOTTON



Remarks:

- The output O1 and O2 are connected to the AC powered curtain, one is for the Line to move forward and another is for the Line to move backward. This wiring can be exchanged according to the running motor direction: forward or backward.
- Warning: Only support the AC power Motor curtain, not support the DC powered Motor Curtain.

INSTALL APP AND REGISTER AN ACCOUNT

1. Scan the following QR code to download Homcloud APP for Android and iOS System. Or you can search and download the APP named as 'Homcloud' from Apple store and Google Play.



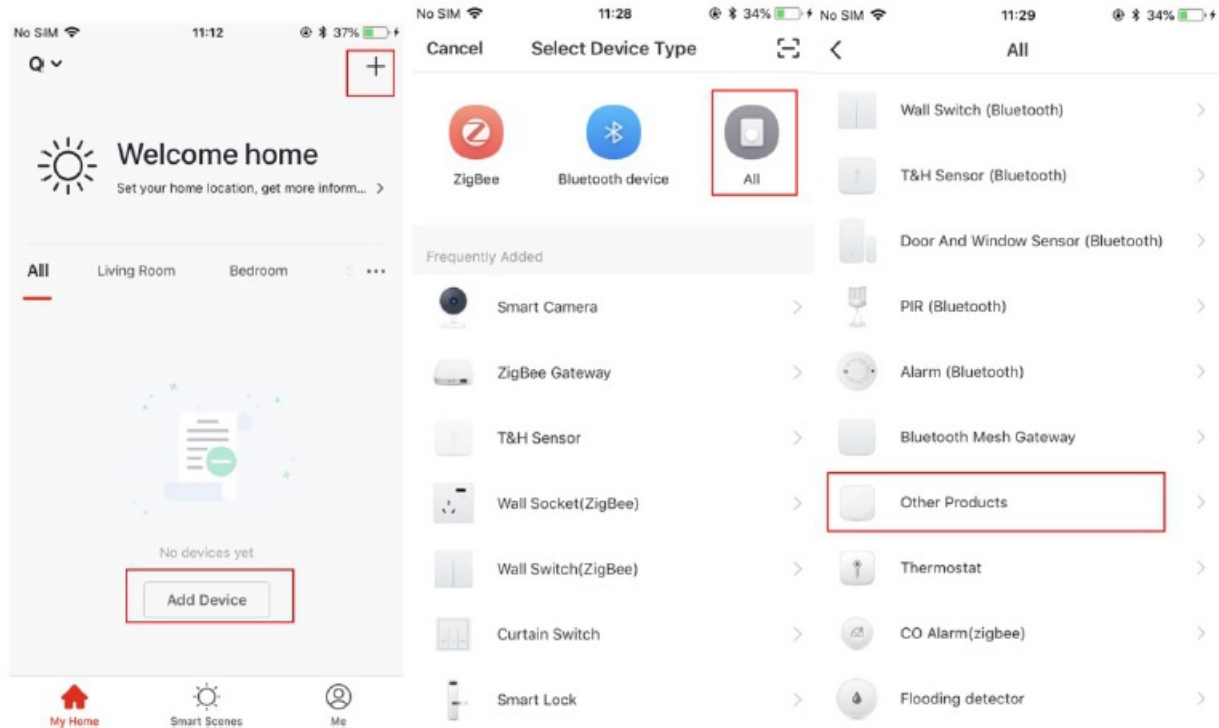
2. Launch the APP and register an account with your email address or mobile number then login;

ADD OR REMOVE DEVICE IN HOMCLOUD APP ACCOUNT

1. Wiring connections and adding power to device Refer sections Part 3: PRODUCT DESCRIPTION -DIP switch configuration and Part 5: Wiring diagrams.
2. Once the device is powered on, it can be set to network configuration mode in two ways
 1. Toggle the Switch1 in wall switch 3 times (on-off as one toggle) . It will enter EZ or AP network configuration mode
 2. Long press and hold the button on the Wi-Fi device for 5s, it will enter EZ or AP network configuration mode
 3. To identify EZ or AP mode – connect a bulb as shown in section 5.1 Or pay attention to the click sound from the device.
 - EZ Mode: The connected light bulb 1 will be flashing quickly. OR Fast click sound.
 - AP Mode: The connected light bulb 1 will be flashing slowly. OR slow click sound.
 - Toggle between EZ/AP Mode: Long press and hold the button on the SP-SW3R Wi-Fi device

for 5s. Please pay attention to electrical safety directions before this operation. To prevent electric shock, do not touch the RF wire terminal and antenna body.

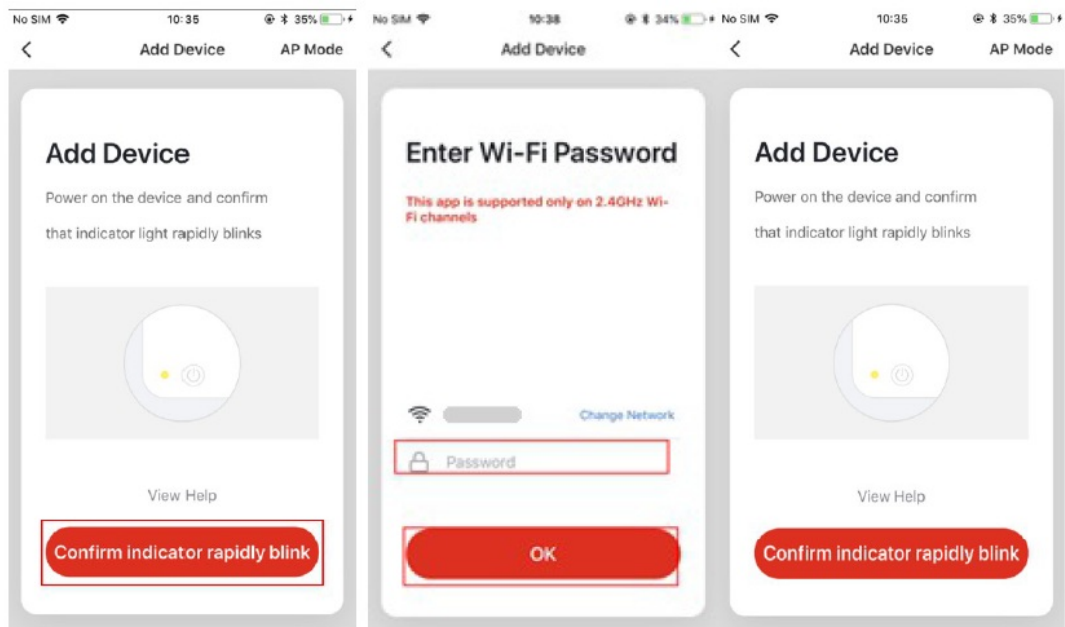
3. Launch the Homcloud APP and login, Click Add Devices -> All -> 'Other product' to start pairing the device.



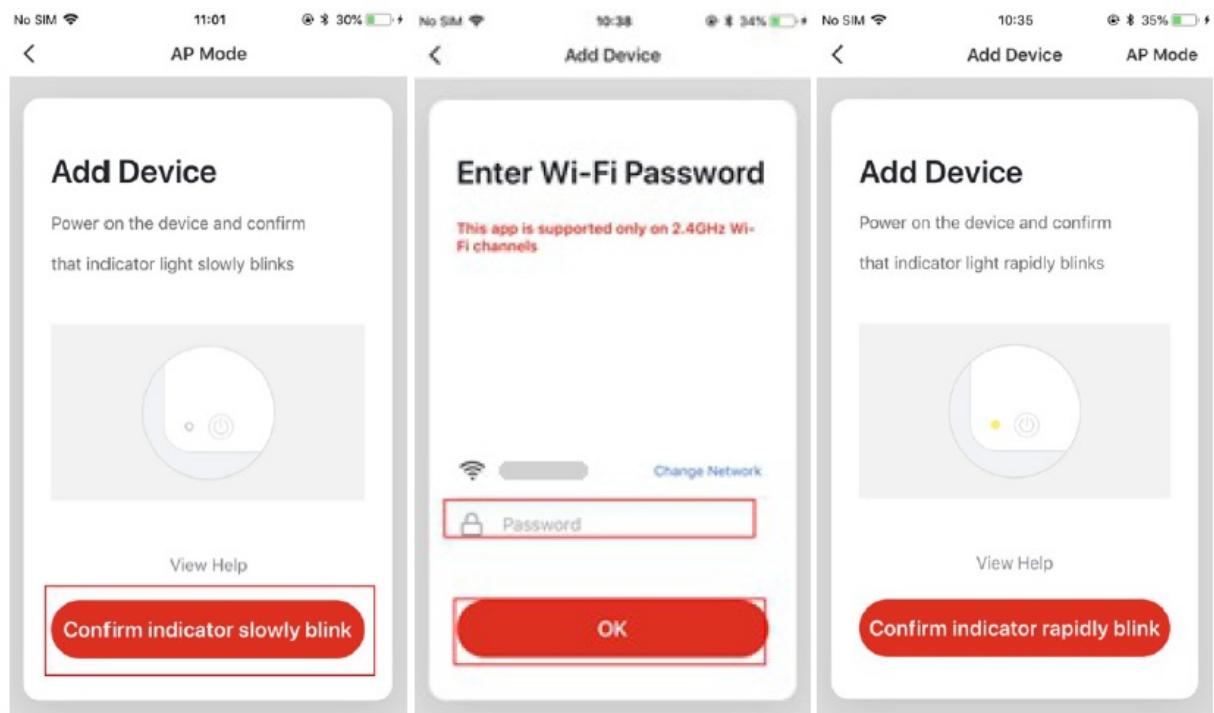
4. When in EZ or AP configuration mode, enter the Wi-Fi SSID and password of the Wi-Fi network that the device is going to work with, then wait for 60 seconds for pairing to finish and device is ready;
5. Follow the on App prompts to change the device name and set sharing with family.
6. Tap on the device to access the switch UI. Here you can turn ON/OFF or set schedules and timer.

Note:

- Make sure that the device and APP work in same Wi-Fi configuration mode and network, both in EZ mode or in AP mode.
- When EZ mode doesn't work in a particular Wi-Fi network, AP mode must be used to pair.
(FOLLOW THE BELOW STEPS ONLY IF EZ MODE FAILED)
- EZ mode: make sure your APP is connected to an internet connection and device and APP both are in EZ mode. Then enter the Wi-Fi network password to finish the device pairing. If you want to change the Wi-Fi network, please check the "Change network";

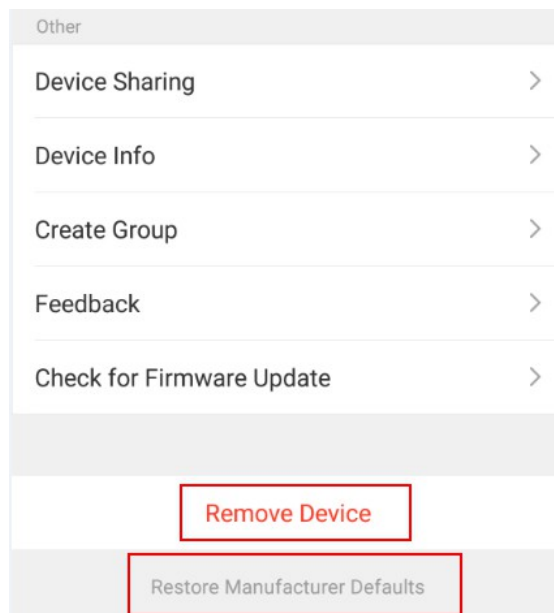


- AP mode: Click AP Mode, make sure your APP is internet available .And device and APP both work in AP mode. Confirm to input the SSID and Password of Wi-Fi network, then select the Device AP name with SmartLife-xxxx in Wi-Fi list then back to App to finish the device adding.



Remove device

1. Click "Remove Device" to remove this device from your account; click "Restore manufacturer Defaults" to remove the device from your account and clear the history record.

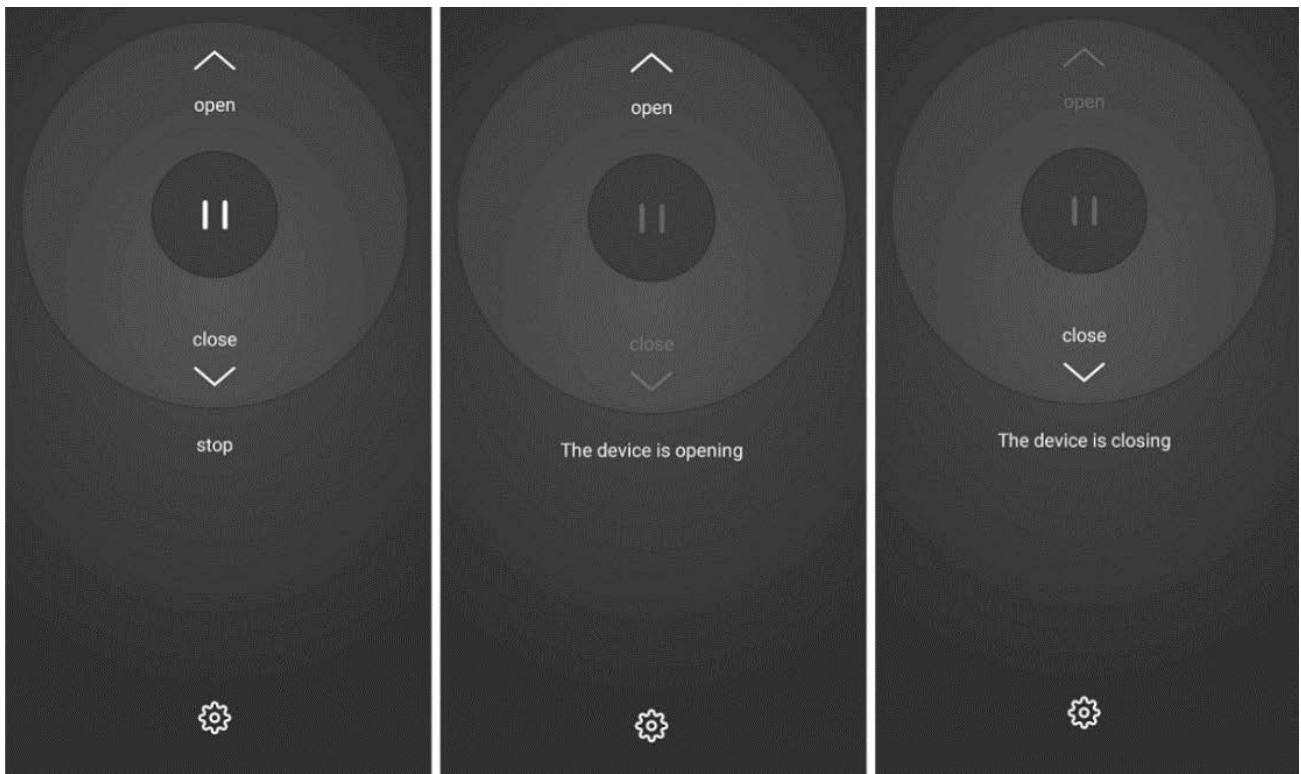


8. Switch UI for one/two/switch lights control



Shadow control UI

- The button is connected to the Homcloud module and access the bidirectional control between the wall button and the app in the phone. Press the wall button connected to S1 once (up or down) to open /close the roller shutter / curtain etc. Same system with the button connected to S2 to open / close roller shutters / curtains.
- Click the Open, Close or Stop(II) to control the shadow operation in App UI.



- In App, Click the Setting Button->Motor reversal to select the forward or back to change the S1 or S2 connection direction. Forward mean S1 ON is open, S1 OFF is TO stop open.

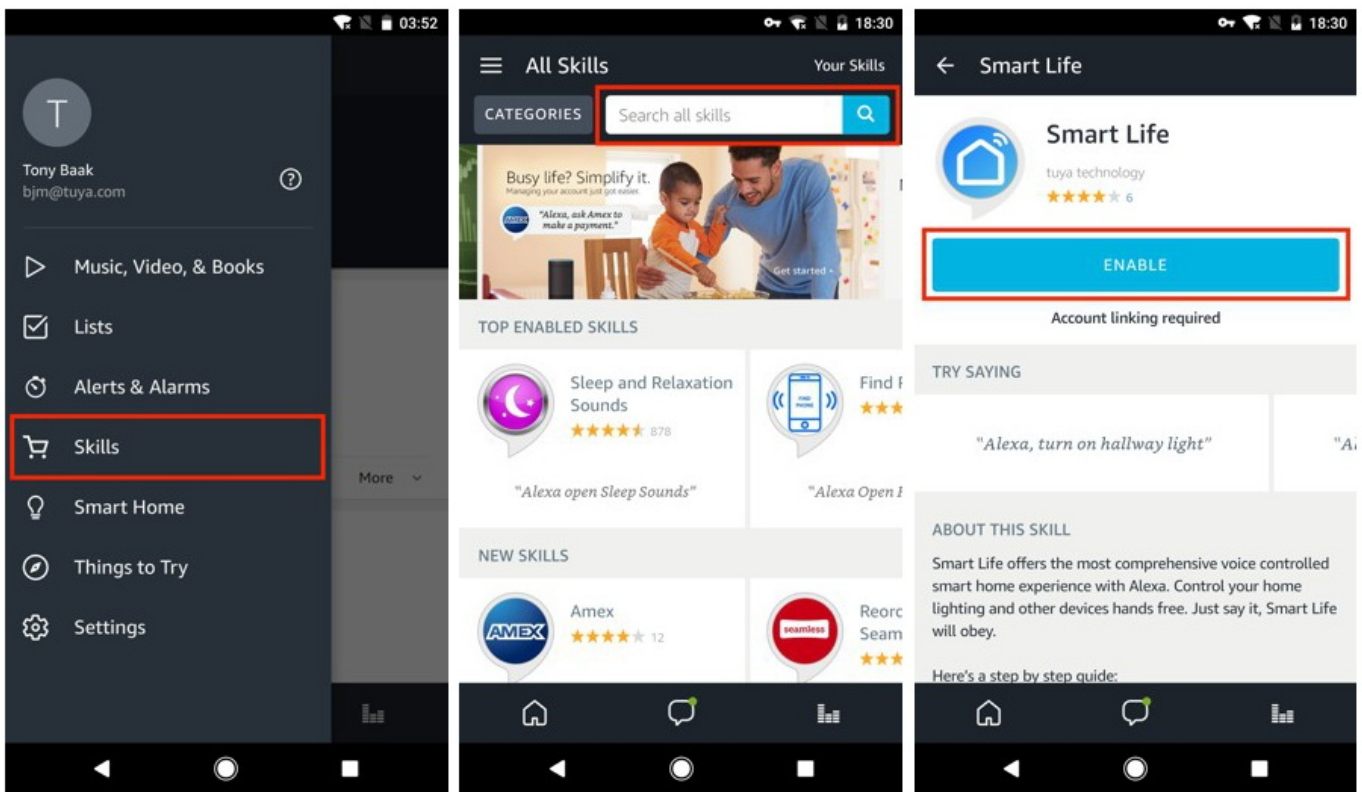
9. QUICK GUIDE OF USING AMAZON ALEXA TO GET THE DEVICE STATE

Before using Echo to control your smart devices, please make sure that the following conditions are met:

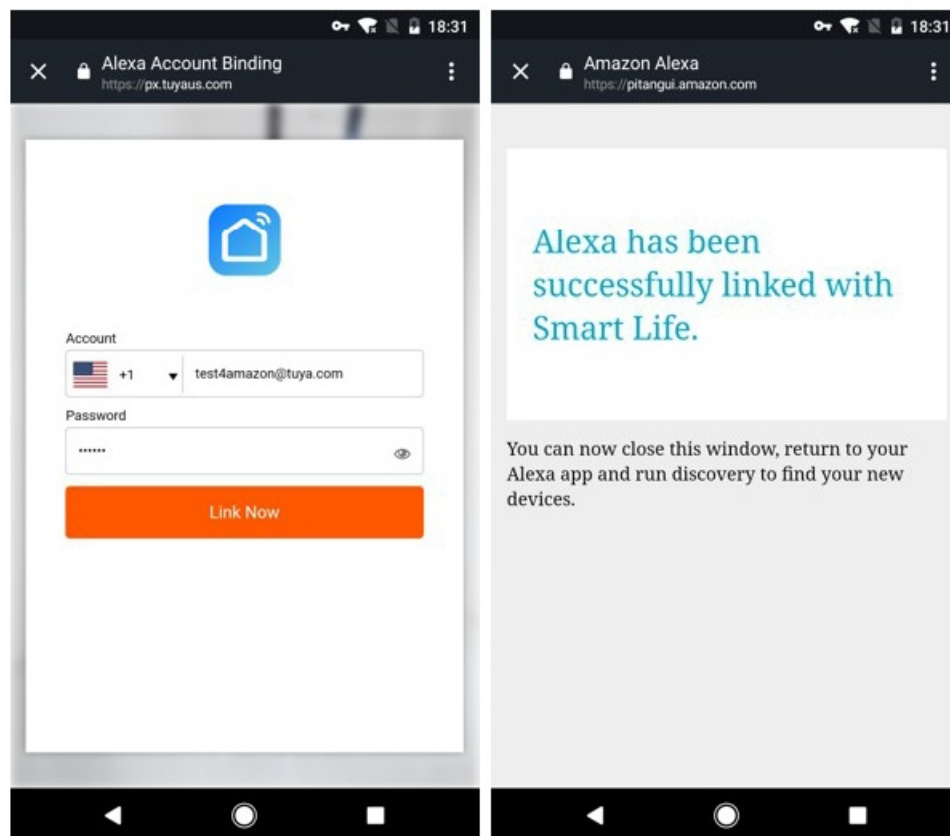
- I Stable Wi-Fi network which could access to Amazon server;
- I An Alexa device, such as Echo, Echo Tap, or Echo Dot;
- I An Amazon Alexa account. Please refer the Alexa guideline to get the Alexa account done;
- I Homcloud APP and a registered account.
- I At least one device is added in your Homcloud account.
- I The name of device is easily recognized by Alexa, such as “living room light”, or “bed room light”

1. Login your Alexa Account on PC or Mobile Phone
2. Link your Homcloud account to Alexa account (Mobile Phone as sample)

1. Tap “Skills” in the hamburger menu, then search “SmartLife”. Select ” SmartLife ” and tap “ENABLE” to



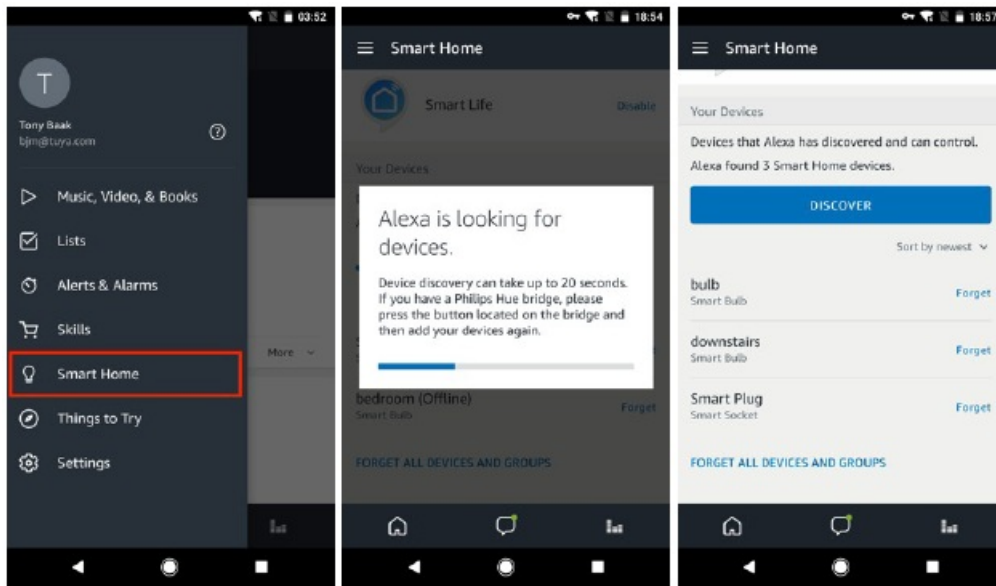
- You will be redirected to the account link page. Type in your APP account and password, don't forget to select the country/region where your account belongs to. Then tap "Link Now" to link your account to Alexa account. The country/region, the account, and the password must match with the exact content when you registered the account. When "Alexa has been successfully linked with SmartLife " shows up, tap on the top left corner.



Discover the Smart device

Alexa devices need to discover the Smart device. You can say "Alexa, discover devices" to Alexa devices. Alexa

devices will discover devices which have already been added in your device account. You can also tap “DISCOVER” in Skill to discover the smart devices. Discovered devices will be shown in the list.



Note:

- When you change the device's name on App account, the re-discovery has to be done before you control them by voice.
- If the Alexa device cannot find this 3R switch added in your linked account, please disable the “Smart Life” skill, enable skill again, link the APP account to Alexa account, and discover the devices again.

Voice control your devices

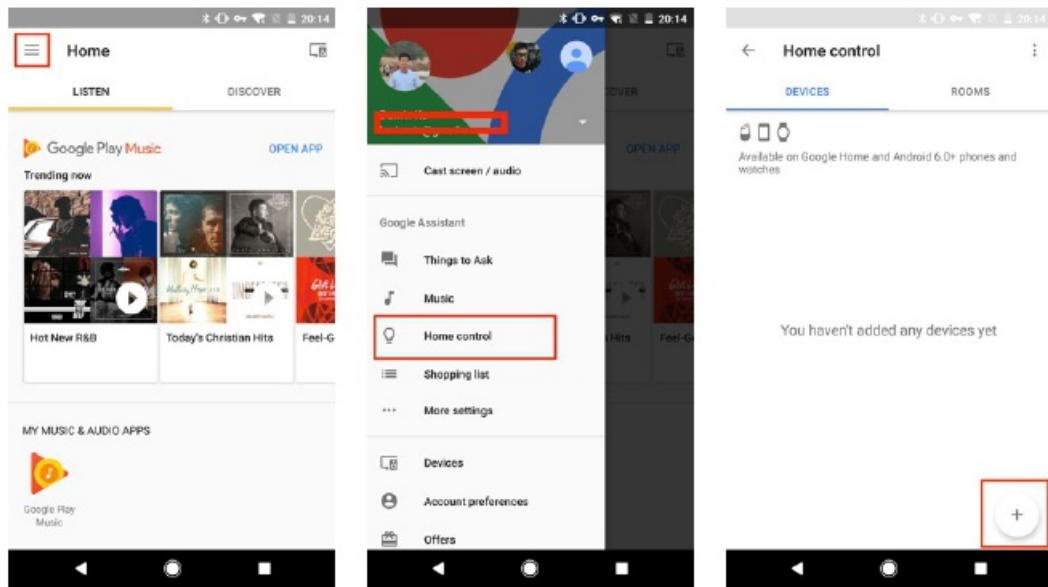
Now you can control your smart devices through Echo. Here below is an example of how to voice control the device “living room light “with Echo:

- Alexa, turn on living room light
- Alexa, turn off living room light

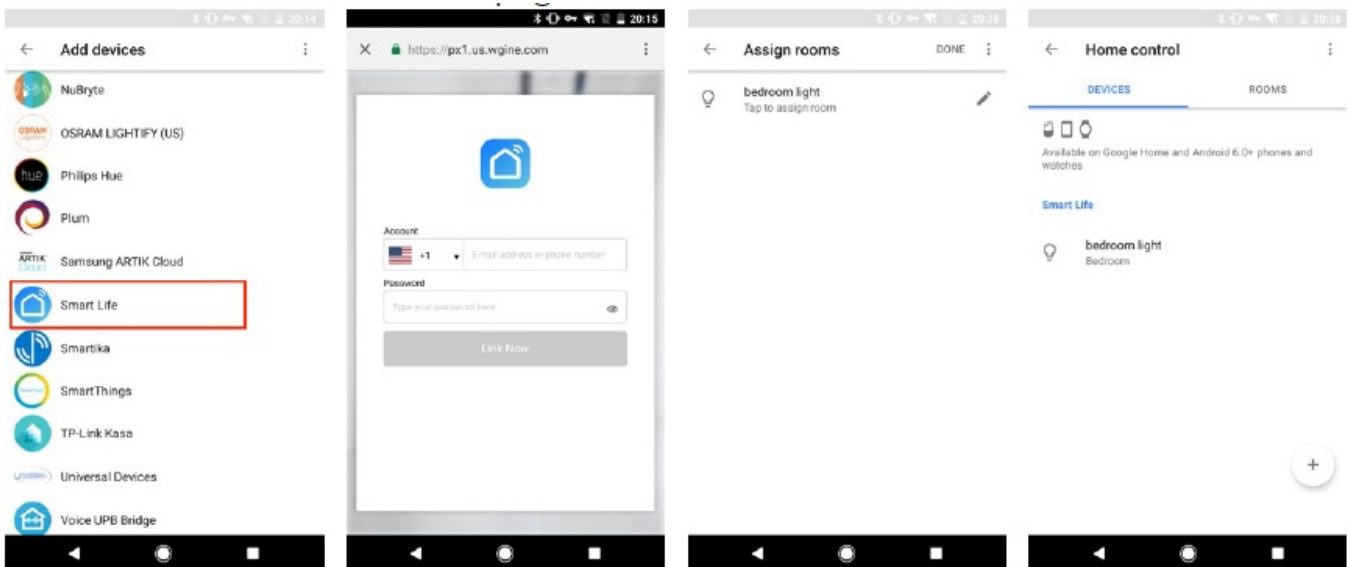
QUICK GUIDE OF USING GOOGLE HOME TO GET THE DEVICE STATE

- Before using Google Home to control your devices, make sure the following conditions are met:
- A Google Home device, or Android phone with Google Assistant.
- Latest Google Home app and Latest Google app (Android only)
- A Google Home account.
- The device display language must be set to English US.
- At least one smart device is added in your Smart Life account.
- The name of device is easily recognized by Google Home, such as “living room light”, or “bed room light”.

1. Login your Google Home Account on Mobile Phone
2. Link your Homcloud account to Google Home account (Mobile Phone as sample)
 1. Tap “Home Control” in the hamburger menu on the Google Home app's home page, then tap “+”.



2. Find “Smart Life” in the list. In the new window, select your device account’s region, type your device account and password, and then tap “Link Now”. After you assign rooms for devices, your devices will be listed in the Home Control page.



Voice control your devices

Now you can control your smart devices through Google Home. Here below is an example of how to voice control the device “living room light” with Google Assistant:

- Ok Google, turn the living room light on?
- Ok Google, turn the living room light off?

QUICK GUIDE OF SETTING IFTTT APPLET WITH SMART SWITCH AS TRIGGER

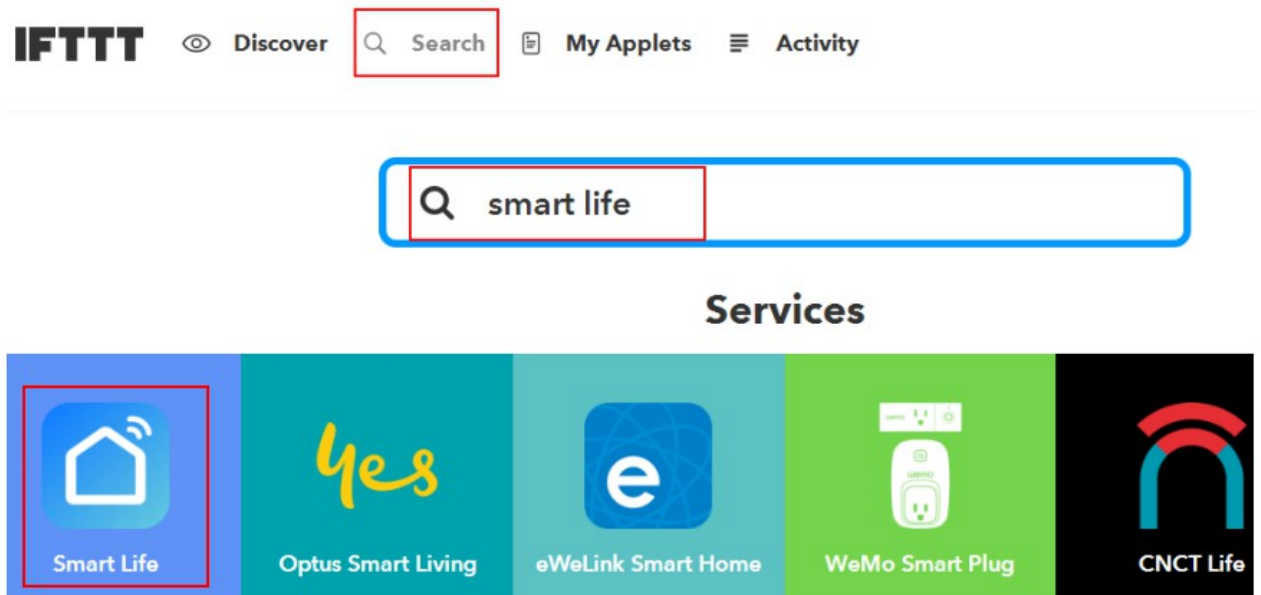
Before using IFTTT to get this device state, make sure the following conditions ready:

- An IFTTT account;
- At least one smart device is added in your account;

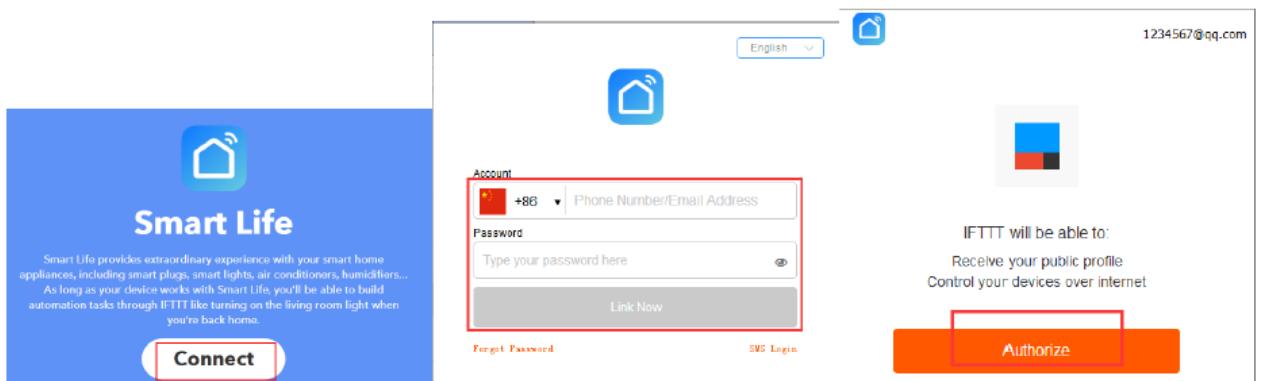
1. Login your IFTTT account on PC or on Mobile Phone APP;

2. Link your account to IFTTT account (PC as sample)

1. Search in IFTTT website for “Smart Life”, and then click “Smart Life” service

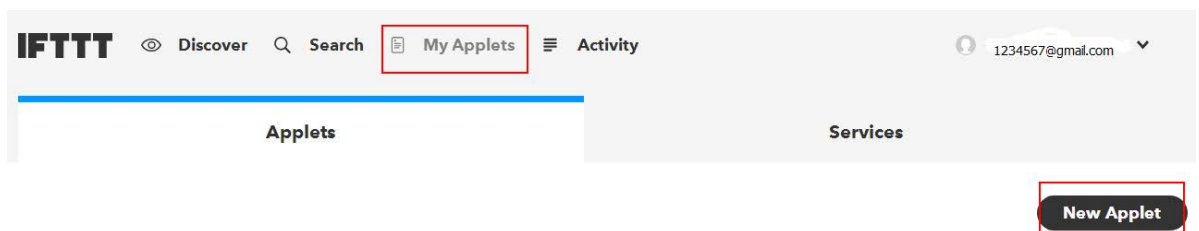


2. Select “Connect”, then a Device App account information is required to input: account and password and Select your device account’s region. After the successful linked with your device account, click the “Authorize” to finish the account link;



3. Setup the IFTTT applet

1. From My Applets, click New Applet to create a new Applet.



2. Create a trigger

Click “this” to determine a trigger. You can search for “smart life” to choose a Smart life Trigger. As listed, the smart switch supports “Turned on” and “Turned off” actions. Choose one of as a trigger, for example, “Turned on”

Choose a service

Step 1 of 6

Smart Life

Complete trigger fields

Step 2 of 6

Device or group is turned on

This trigger fires when the specified device/group is turned on.

Which device/group?

3R-Switch-Module

Create trigger

3. Create an Action

Click “that” to link to an Action. An “Email” action is used as a sample to send your email while the 3R-Switch-Module is on.

Choose action service

Step 3 of 6

Email

Email Digest

Choose action

Step 4 of 6

Send me an email

This Action will send you an HTML based email. Images and links are supported.

Complete action fields

Step 5 of 6

Send me an email

This Action will send you an HTML based email. Images and links are supported.

Subject

DeviceName was turned on
TriggeredAt

Add ingredient

Body

DeviceName was turned on
TriggeredAt

Add ingredient

Create action

Review and finish

Step 6 of 6

If 3R-Switch-Module is turned on, then Send me an email at 94081665.com@gmail.com

by 94081665com

83/140

works with

Receive notifications when this Applet runs

Finish

For example: “IF 3R-Switch-Module is turned on, then send me an email at xxxxxxx@gmail.com” is created as an IFTTT applet.

FAQ

Q: The device fails to be added in account?

A:

1. Make sure the Wi-Fi network is 802.11 b/g/n 2.4GHz;
2. Make sure the device works with APP in same Wi-Fi Configuration mode: EZ or AP;
3. Make sure the input SSID and password of the Wi-Fi network are correct;
4. Make sure Wi-Fi internet connection is working fine;
5. Make sure the device is powered on;


Q: The device does not work with Alexa or Google Home?

A:

1. Make sure the device is added in your Device APP;
2. Make sure your device is linked to Alexa or Google Home account;
3. Make sure your Alexa devices or Google Home devices are working fine;
4. Make sure the device is working fine in Device APP;

Imported by: Life365 Italy S.p.A. – European General Agency
Viale Roma 49/a, 47122 Forlì, Italy – Made in China

Documents / Resources

	<p>HOMCLOUD SP-SW3R 3 Gang WiFi Smart Switch [pdf] User Manual SP-SW3R, 3 Gang WiFi Smart Switch, SP-SW3R 3 Gang WiFi Smart Switch, WiFi Smart Switch, Smart Switch, Switch</p>
---	---