




HOMECLOUD QS-WIFI-S04-3C 3-Gang Wi-Fi Switch Module Instruction Manual

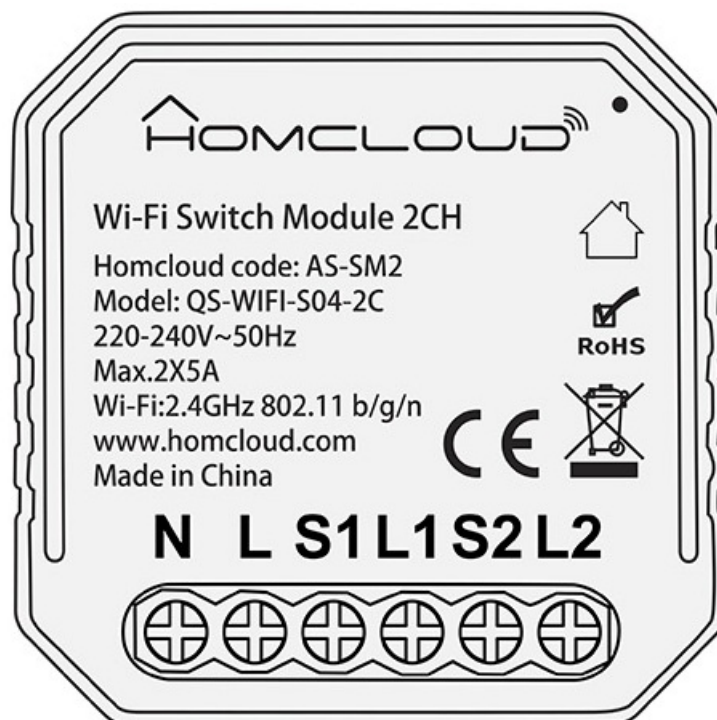
[Home](#) » [HOMECLOUD](#) » HOMECLOUD QS-WIFI-S04-3C 3-Gang Wi-Fi Switch Module Instruction Manual 

Contents

- [1 HOMECLOUD QS-WIFI-S04-3C 3-Gang Wi-Fi Switch Module](#)
- [2 EASY&QUICK CONFIGURATION](#)
- [3 TECHNICAL SPECIFICATIONS](#)
- [4 MAIN FEATURES](#)
- [5 INSTALLATION](#)
- [6 WIRING DIAGRAMS](#)
- [7 DOWNLOAD AND REGISTRATION](#)
- [8 CONFIGURATION](#)
- [9 INTEGRATION WITH GOOGLE HOME AND AMAZON ALEXA](#)
- [10 FAQ](#)
- [11 Documents / Resources](#)
 - [11.1 References](#)
- [12 Related Posts](#)

homecloud

HOMECLOUD QS-WIFI-S04-3C 3-Gang Wi-Fi Switch Module



Hereby, Life365 Italy S.p.A., declares that this wireless device complies with the essential requirements and other related provisions of Directive 2014/53/EU of the European Parliament and of the Council. The declaration can be consulted on the website www.homcloud.com/doc.

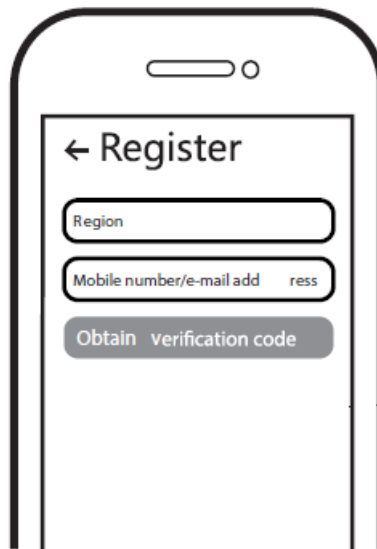
“Homcloud” is a registered trademark of Life365 Italy S.p.A.

EASY&QUICK CONFIGURATION

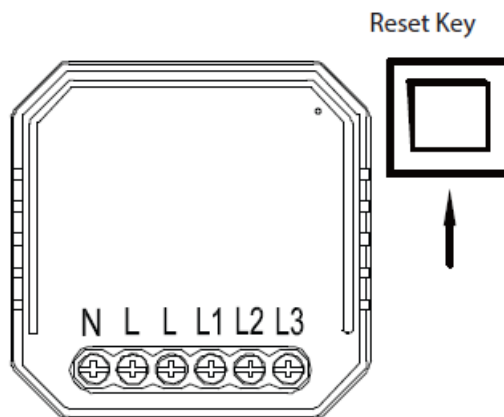


- IOS APP / Android APP

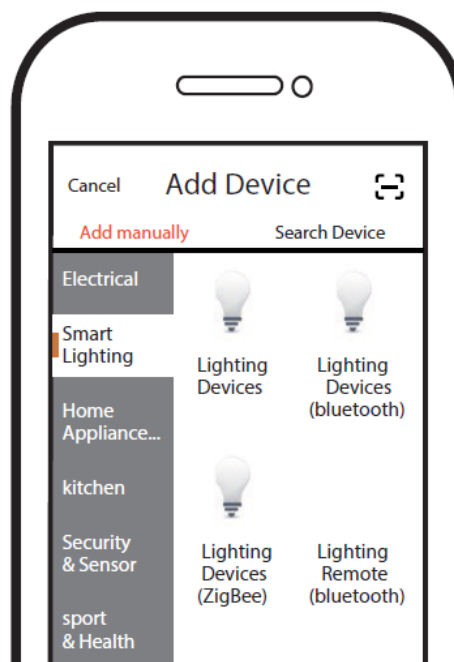
1. Scan the QR code to download HOMECLOUD App, or you can also search the keyword “HOMECLOUD” at App Store or Google Play to download App.



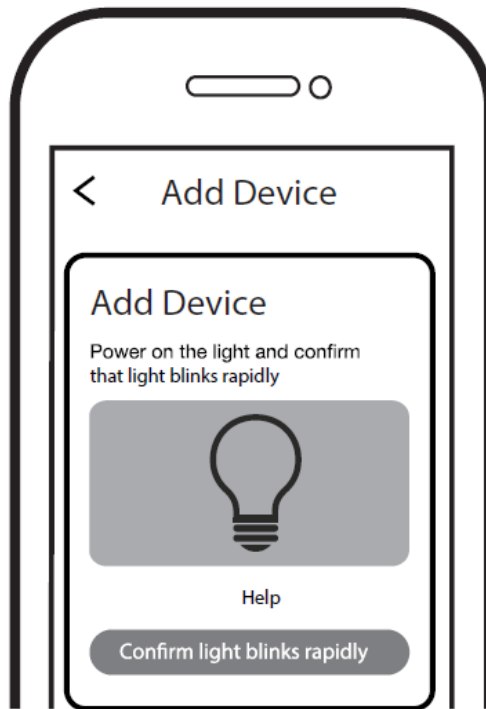
2. Log in or register your account with your mobile number or e-mail address. Type in the verification code sent to your mobile or mailbox, then set your login password.



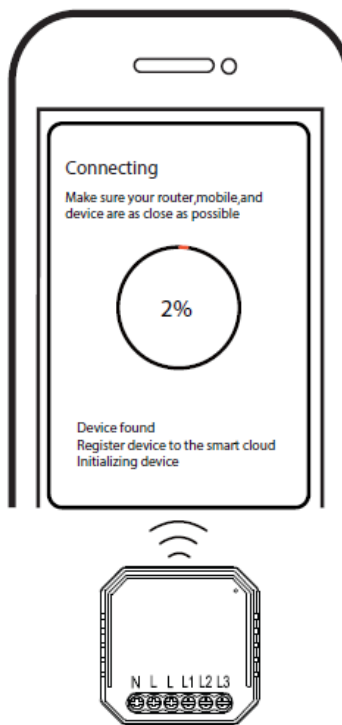
3. Click “Create Family” to enter into the APP. After the wiring of the switch module is done, press the traditional switch to turn ON/OFF cycle for 5 times (keep time interval not too short) or press the reset key for about 10s until the indicator light on the module flash quickly for pairing mode, if the indicator light flashes slowly.pls, repeat the above procedures.



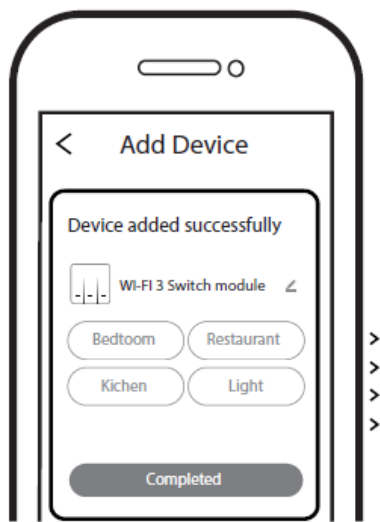
4. Open the APP, selecting “+” on the top right to add a device. Choose the type of device, for example, “Smart Lighting”, and select the correct device type.



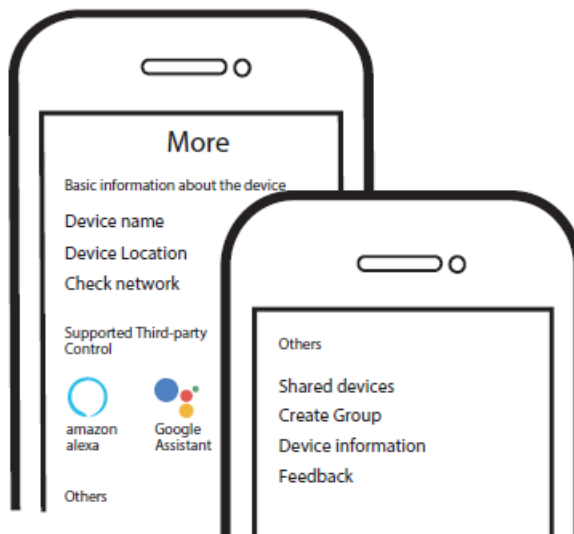
5. Make sure your smartphone and Wi-Fi switch module is under the same Wi-Fi network at a 2.4GHz connection. Confirm when the indicator light flashes quickly for pairing mode.



6. The pairing will take about 10-120 seconds to complete depending on your network condition.



7. When pairing is done, the Wi-Fi switch will be shown on the App.

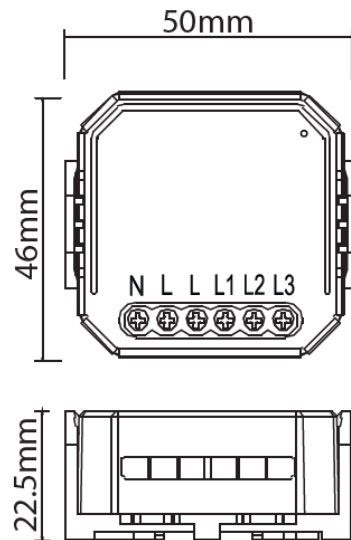


8. Connect to amazon alexa or Google Assistant for voice control, or share the devices with your families or friends.

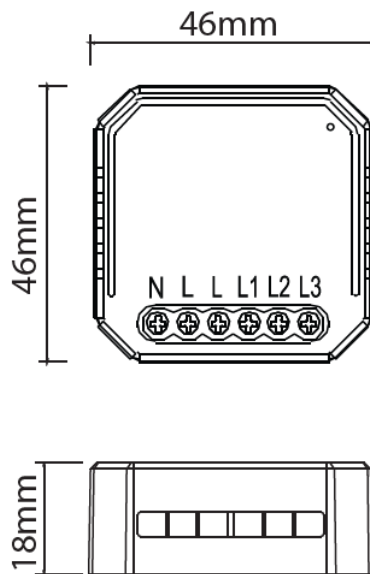
TECHNICAL SPECIFICATIONS

| | |
|-------------------|---------------------------------|
| Product type | 3 Gang Wi-Fi Switch Module |
| Voltage | 100-240V AC 50-60Hz |
| Current | 3x5A |
| Max. load | 3x1150W / 3x150W for LED lamp |
| WiFi frequency | 2.4GHz – 2.4835GHz WIFI |
| Operation temp. | -10°C – +40°C |
| Case temp. | Tc: +80°C (Max.) |
| Operation range | ≤ 200 m |
| Dims (WxDxH) | 46x46x18mm(without clip) |
| IP rating | IP20 |
| Max trasm. power: | 19,91dBm (Max Antennagain 3dBi) |

with mounting clip



without mounting clip



MAIN FEATURES

The Wi-Fi 16A switch module is designed to transform your traditional wall switches into Wi-Fi switches that allows the connected device to be controlled via smartphone as well as traditional switches on the wall.

Notes

1. Both the adjustment on App and the switch on the wall can overwrite each other, the last adjustment remains in memory.
2. The App control is synchronized with the manual switch.
3. For both single-way and two-way switches. Neutral wire required – Metal faceplate not supported.

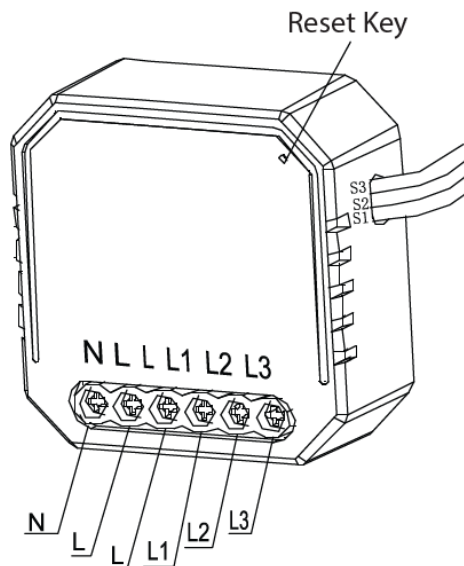
Important: Our App only supports 2.4 GHz Wi-Fi networks, IEEE 802.11 b/g/n(for configuration both device and mobile phone need to be connected at the same Wi-Fi network).

INSTALLATION

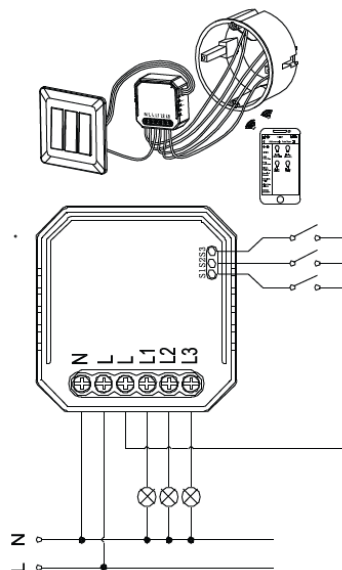
Warnings

1. Installation must be carried out by a qualified electrician in accordance with local regulations.
2. Keep the device out of reach of children.
3. Keep the device away from water, damp or hot environments.
4. Install the device away from strong signal sources such as microwave ovens that may cause signal interruption resulting to abnormal operation of the device.
5. Obstruction by concrete walls or metallic materials may reduce the effective operation range of the device and should be avoided.
6. Do NOT attempt to disassemble repair or modify the device.

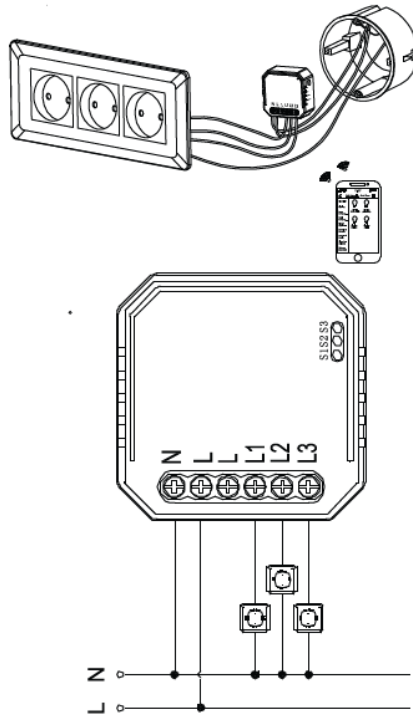
WIRING DIAGRAMS



1. Used to the normal switch



2. Used to the socket



DOWNLOAD AND REGISTRATION

(if you have got already HomCloud App on your mobile and an Account go to Configuration).

- Download HomCloud App from App Store or Google Play or scan QR code below.



- Enter the register/login interface and register with your country area code and phone number/email address.
- Wait a few minutes for the verification code (by email or text message) and enter it where required along with a password. (between 6 and 20 numbers and letters)

CONFIGURATION

- Connect your mobile device to a 2.4 GHz Wi-Fi Network and launch HomCloud App.
- See "Wiring instructions" if you haven't done it yet.
- Press the traditional switches (connected to the Wi-Fi 3gang switch module) ON-OFF-ON-OFF for at least 5 times (one time per second) or until the indicator light on the module flash quickly (If you wait more than 120 sec you need to repeat this passage). or Press the reset key for at least 10 sec until the indicator light on the module flashes.
- Keep smartphone close to the switch you want to configure (approx 30cm) and tap on the HomCloud homepage "add device" or the icon "+". After that tap "Wi-Fi switch module" on devices list.
- Confirm on App module indicator light flashing.
- Insert or confirm Wi-Fi network name and password.
- Wait for configuration successfully then tap "Done".

- Rename the device and choose the room name if you wish to.

INTEGRATION WITH GOOGLE HOME AND AMAZON ALEXA

Download and install Google Home or Amazon Alexa App for mobile and control your devices with your voice with Smart Speakers or directly with your smartphone.

Important: If you want to link HomCloud App to Google Home or Alexa App you need to select “Smart Life” App between the list of Google Home or Alexa partners. (after that passage the user will be automatically direct to HomCloud App).

NO NEED to download Smart Life App.

Please visit www.homcloud.com/config for support

FAQ

Q1: Which products can I control with the device?

You can control all type of lights, and electrical products in accordance with the device specifications.

Q2: What happens if the wifi goes off?

You can still control the device connected the module with your traditional switch and once Wi-Fi is active again the device connected to module will connect automatically to your Wi-Fi network.

Q3: What should I do if I change the Wi-Fi network or change the password?

You can connect the module to the Wi-Fi network according to the App User Manual.


Q4: How do reset the device?

Press the traditional switches (connected to the Wi-Fi gang switch module) ON-OFF-ON-OFF for at least 5 times (one time per second) or Power on/off the device for 5 times until the indicator light on the module flash quickly.

Please visit www.homcloud.com for more information.

Imported by: Life365 Italy S.p.A. – European General Agency Viale Roma 49/a, 47122 Forlì, Italy- Made in China

Documents / Resources

| | |
|---|--|
|  | HOMCLOUD QS-WIFI-S04-3C 3-Gang Wi-Fi Switch Module [pdf] Instruction Manual QS-WIFI-S04-3C, 3-Gang Wi-Fi Switch Module, QS-WIFI-S04-3C 3-Gang Wi-Fi Switch Module |
|---|--|

References

- [Home - Homcloud](#)
- [Supporto - Homcloud](#)
- [Doc - Homcloud](#)

