



## Holybro PM06 V2 Power Module for Controller Instructions

[Home](#) » [Holybro](#) » Holybro PM06 V2 Power Module for Controller Instructions 

### Holybro PM06 V2 Power Module for Controller Instructions



### Spec

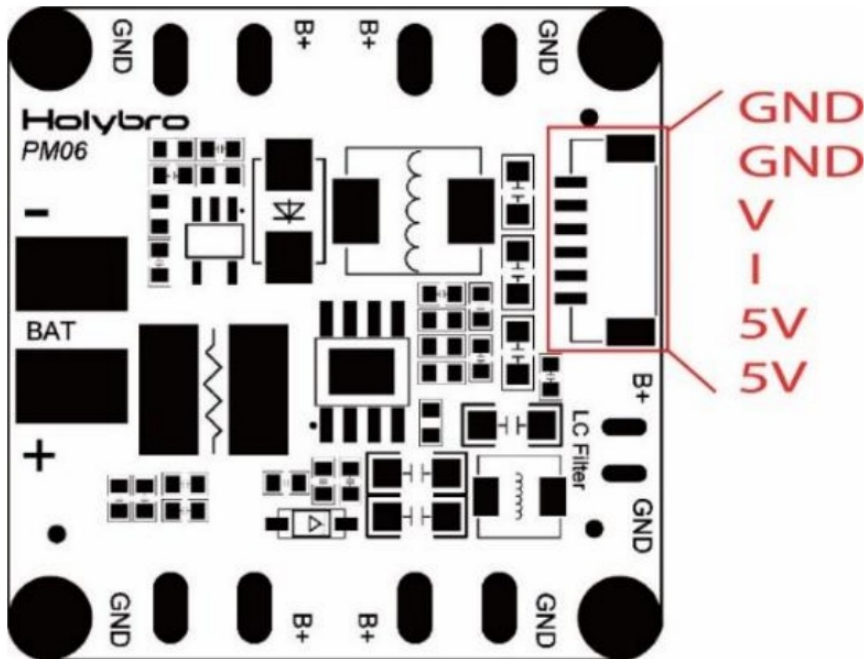
**Power Module Rated current:** 60A  
**Power Module Max current:** 120A(<60S)  
**UBEC output Current:** 3A Max  
**UBEC Input Voltage:** 7~42V 10S LiPo  
**UBEC maximum power consumption:** 18W  
**Power output:** DC 5.1V~5.3V

**Dimensions:** 35x35x5mm

**Mounting hole:** 30.5mm\*30.5mm

**Weight:** 24g

## PIN MAP

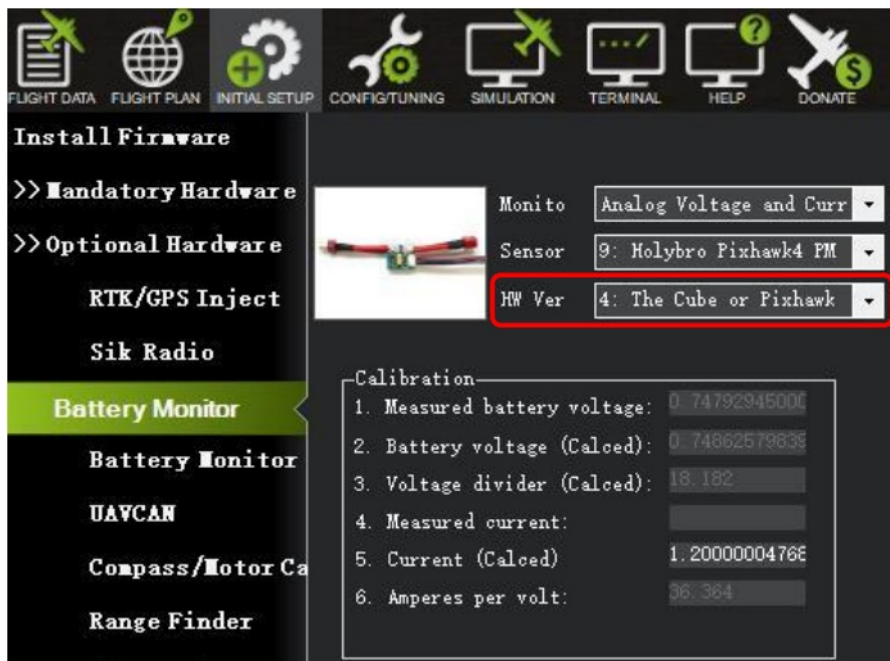


**Make the PM06 show the quantity of electric charge of your battery**

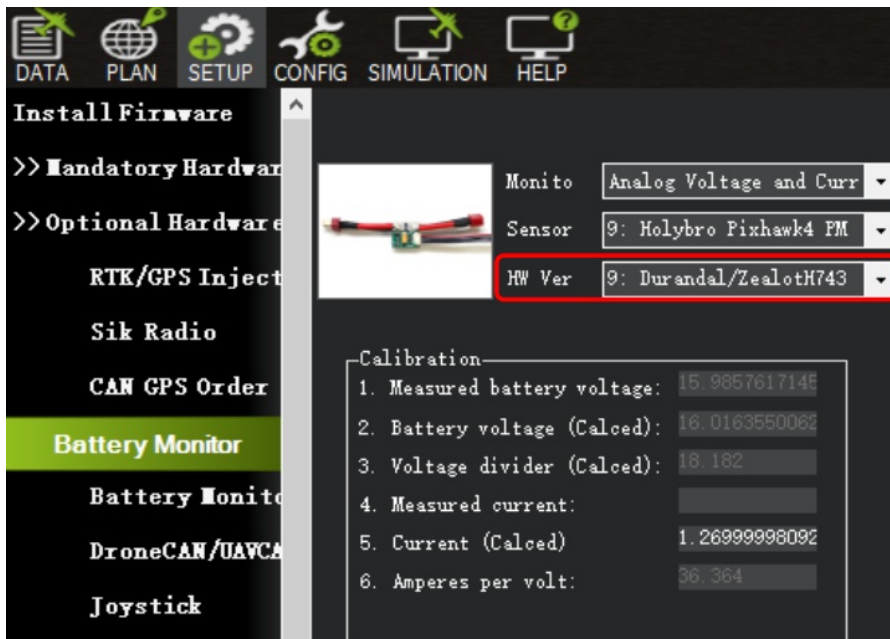
**Mission Planner setup:**

1. Connect PM06 to the battery, also connect it to Mission Planner via USB.
2. Click "INITIAL SETUP" and come to the menu "Battery Monitor".
3. Make "Monito" into "Analog Voltage and Current".
4. Make "Sensor" into "9: Holybro Pixhawk4 PM".
5. Make "HW Ver: "The Cube or Pixhawk" pixhawk4,pixhawk4mini,pix32v5,pix32 " \* "HW Ver: Durandal Durandal " \*
6. Input "18.182" into Voltage divider (Calced).
7. Input "36.364" into "Amperes per volt".
8. Disconnect and reconnect it to finish the setting up. "Measured battery voltage" shows the current quantity of electric charge of the battery.

※HW Ver: "The Cube or Pixhawk" pixhawk4,pixhawk4mini,pix32v5,pix32



※HW Ver: Durandal Durandal .Or you can designate it in the Full Parameter List



The XT60 plug and 12AWG wire that PM06 comes with is rated for 30A continuous current and 60A instantaneous current (<1 minute). If a higher current is being used, the plug type and wire size should be changed accordingly. The specifications and models are as follows:

Plug specification	wire size	Rated current: (4 hours, temperature rise <60 degrees)	Max current: (1 minute, temperature rise <60 degrees)
XT60	12AWG	30A	60A
XT90	10AWG	45A	90A
XT120	8AWG	60A	120A

**Package Include**

- 1x PM06 board
- 1x 80mm XT60 connector wire (installed)
- 1x Electrolytic capacitor: 220uF 63V(installed)
- 1x JST GH 6pin cable
- 1x JST SH 6pin cable


## Contents

### 1 Documents / Resources


#### 1.1 References

### 2 Related Posts

## Documents / Resources

	<p><a href="#">Holybro PM06 V2 Power Module for Controller</a> [pdf] Instructions PM06 V2, PM06 V2 Power Module for Controller, Power Module for Controller, Module for Controller, Power Module</p>
--	--

## References

-  [Holybro - Build your drone from here](#)