



# HOLMAN WX8 8 Station WiFi Irrigation Controller User Guide

[Home](#) » [Holman](#) » HOLMAN WX8 8 Station WiFi Irrigation Controller User Guide 

## Contents

- [1 HOLMAN WX8 8 Station WiFi Irrigation Controller](#)
- [2 Key Features](#)
- [3 Resources](#)
- [4 3 Year Replacement Guarantee](#)
- [5 Third Party Rain Sensors](#)
- [6 Pump Connection](#)
- [7 Troubleshooting](#)
- [8 Documents / Resources](#)
- [9 Related Posts](#)





## Key Features

- 8 watering ZONES
- 3 START times where ZONES can be allocated to each START. In addition, Holman Home provides the ability to setup TAP-TO-RUN watering scenes and AUTOMATION watering scenes for your STARTS and ZONES
- 7-day watering schedule
- Permanent memory
- Real time clock
- Inbuilt transformer
- Outdoor housing with lid
- No electrician required for installation
- Compatible with master valve or pump relay
- Rain sensor capable input
- Compatible with EVIE Sensor (sold separately)
- Manual operations: SYSTEM TEST, SINGLE ZONE or MANUAL START; A, B or C
- Smartphone operation
- 2.4GHz Wi-Fi compatible

## Mobile Device System Requirements

Android 4.4.2 and above or,  
iOS 12.0 and above,

- **2.4GHz Wi-Fi CONNECTION**

via your smartphone with Holman Home

- **Voice command enabled**

with Amazon Alexa and Google Assistant

## **Resources**

For additional resources, please visit [www.holmanindustries.com.au/wx8-wifi-irrigation-controller](http://www.holmanindustries.com.au/wx8-wifi-irrigation-controller)

Your WX8 is designed to be operated via your device with the Holman Home app. Without this, your WX8 will have limited functions

Always ensure you are running the latest version of Holman Home on your device to avoid limiting its functions

## **3 Year Replacement Guarantee**

Holman offers a 3 year replacement guarantee with this product.

In Australia our goods come with guarantees that cannot be excluded under the Australian Consumer Law. You are entitled to a replacement or refund for a major failure and compensation for any other reasonably foreseeable loss or damage.

You are also entitled to have the goods repaired or replaced if the goods fail to be of acceptable quality and the failure does not amount to a major failure.

As well as your statutory rights referred to above and any other rights and remedies you have under any other laws relating to your Holman product, we also provide you with a Holman guarantee.

Holman guarantees this product against defects caused by faulty workmanship and materials for 3 years domestic use from the date of purchase. During this guarantee period Holman will replace any defective product. Packaging and instructions may not be replaced unless faulty.

In the event of a product being replaced during the guarantee period, the guarantee on the replacement product will expire 3 years from the purchase date of the original product, not 3 years from the date of replacement.

To the extent permitted by law, this Holman Replacement Guarantee excludes liability for consequential loss or any other loss or damage caused to property of persons arising from any cause whatsoever. It also excludes defects caused by the product not being used in accordance with instructions, accidental damage, misuse, or being tampered with by unauthorised persons, excludes normal wear and tear and does not cover the cost of claiming under the warranty or transporting the goods to and from the place of purchase.

Should you suspect your product may be defective and need some clarification or advice please contact us directly:

1300 716 188

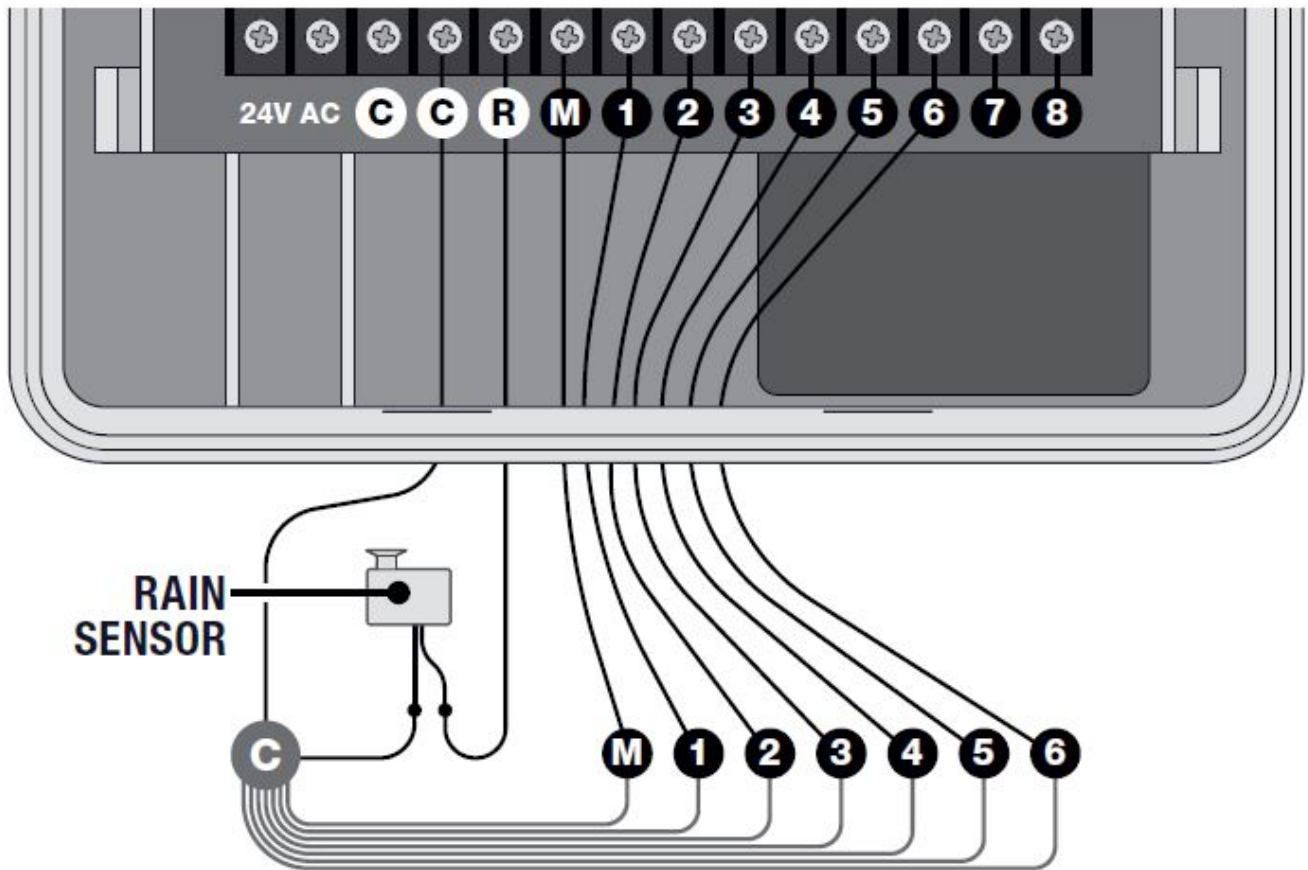
[services@holmanindustries.com.au](mailto:services@holmanindustries.com.au)

11 Walters Drive, Osborne Park 6017 WA

If you are certain your product is defective and is covered by the terms of this warranty, you will need to present your defective product and your purchase receipt as proof of purchase to the place you purchased it from, where the retailer will replace the product for you on our behalf.

## **Third Party Rain Sensors**

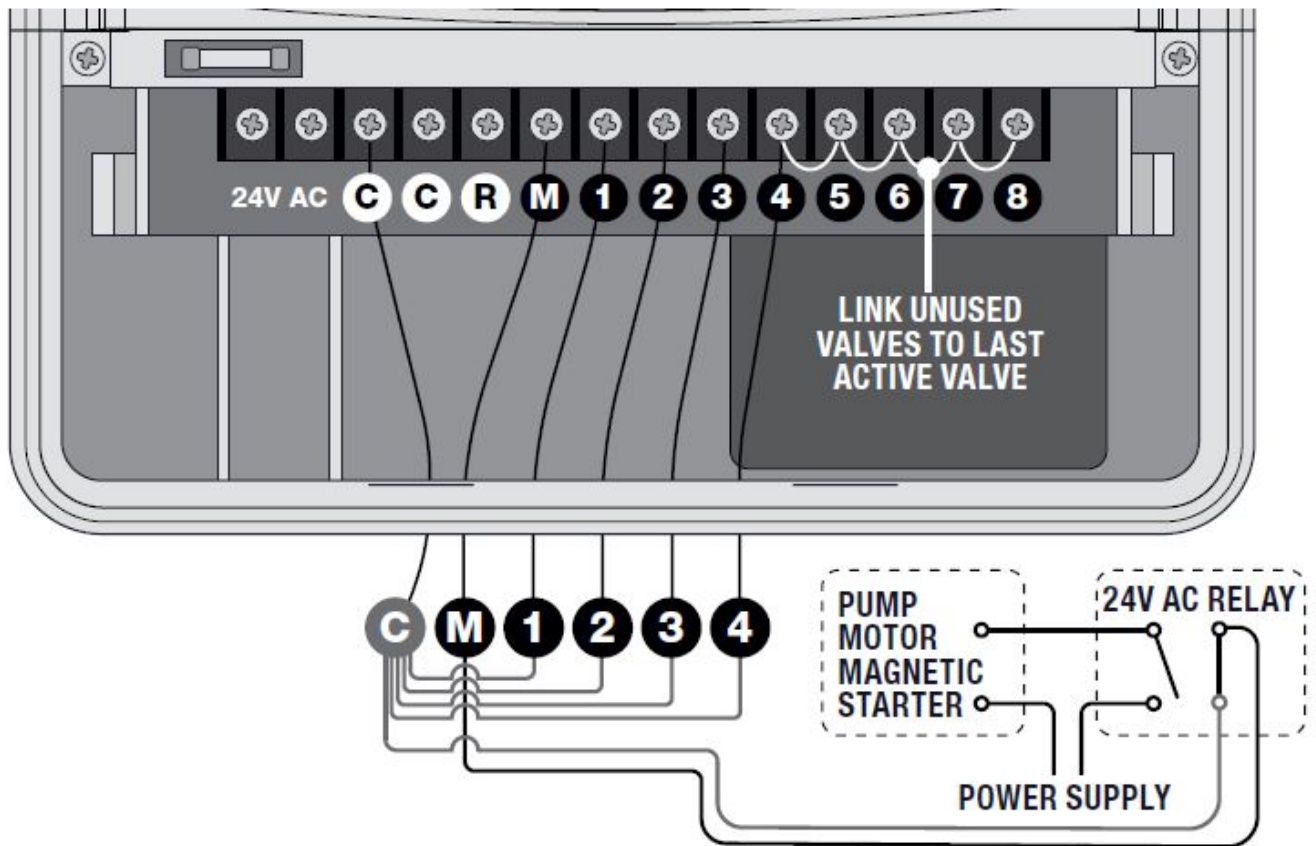
- This is to detect rainfall and automatically suspend watering, resuming after the sensor dries out.
- Remove the link connector between C and R, and replace with 2 wires from your rain sensor as shown below.



- Your WX8 is compatible with our EVIE Sensor. Refer to the sensor manual for setup help.
- EVIE Sensor will already be connected if it was included with your WX8 package.

## Pump Connection

- Your WX8 doesn't provide mains power to drive a pump. It does provide a low voltage signal to actuate a relay, enabling the contactor and the pump
- Do not attempt to drive a pump starter directly from the controller L Pump start is provided by connecting one side of the coil from a suitable relay to the MASTER VALVE/PUMP START (M) output of the controller and the other side to the controller common
- Unused stations must be connected back to the last used station to prevent running against a closed head if run times are incorrectly set



## Troubleshooting

Symptom	Suggestion

<p><b>WX8 cannot connect to Holman Home</b></p>	<p>When adding your <b>WX8</b> to <b>Holman Home</b>:</p> <ol style="list-style-type: none"> <li>1. Confirm your <b>WX8</b> is powered <b>ON</b></li> <li>2. Confirm wifi <b>AP</b> on your <b>WX8</b> is flashing <b>RED</b></li> <li>3. Confirm both your <b>WX8</b> and smartphone are within Wi-Fi range</li> <li>4. Make sure the network functions of your Wi-Fi router and smartphone are unblocked; firewalls can block certain ports</li> <li>5. Confirm your Wi-Fi network name (SSID) has been entered correctly, including spaces. Note this is case sensitive</li> <li>6. Confirm your Wi-Fi network password has been entered correctly</li> <li>7. Confirm your <b>WX8</b> is connected to a 2.4GHz Wi-Fi network (not 5GHz), enable the broadcast and do not allow the Wi-Fi network to be hidden</li> <li>8. Confirm your Wi-Fi router encryption method is WPA2-PSK and authentication type is AES, or both are set to automatic.</li> <li>9. If the number of connected devices to the Wi-Fi has reached the amount limit (usually 16 or 50 devices), turn off other Wi-Fi devices and configure again</li> <li>10. If your Wi-Fi router enables the MAC address filter, remove the device from MAC filter list and make sure the Wi-Fi router is allowing your <b>WX8</b> to be connected</li> <li>11. Make sure that the Wi-Fi router has the DHCP service enabled. If it is not enabled, the address will be occupied.</li> <li>12. Your Wi-Fi router may not be compatible with your <b>WX8</b>. It is recommended that you replace the Wi-Fi router and try again</li> </ol>
<p><b>WX8 was connected but wifi AP is now RED or OFF after mounting in desired position</b></p>	<p>This indicates a lack of Wi-Fi signal. You will need to move your <b>WX8</b> and Wi-Fi router closer to each other</p>
<p><b>wifi AP LED is OFF</b></p>	<p>Your <b>WX8</b> cannot connect; check your Wi-Fi router</p>

wifi <b>AP LED is RED</b>	Your <b>WX8</b> cannot connect to the cloud server; check your internet connection as you will not be able to control watering with <b>Holman Home</b>
<b>No LED lights on</b>	No AC power, or a blown fuse or transformer. Check fuse and transformer output. Turn power on
<b>Single zone not working</b>	Faulty solenoid coil, or break in field wire. Check solenoid coil (a good solenoid coil should read around 33Ω on a multi meter). Test field cable for continuity. Test common cable for continuity
<b>No automatic start</b>	Setup error, rain sensor is wet, <b>MAIN DIAL</b> is in <b>OFF</b> position, or blown fuse or transformer. If unit works manually then check the setup, rain sensor status or <b>MAIN DIAL</b> position. If not then check the fuse, wiring and transformer is supplying 24V AC (measured on a multimeter)
<b>Buttons not responding</b>	Please contact our Customer Service team
<b>Multiple zones watering at once</b>	Possible faulty driver triac, incorrect field wiring or broken or lost common wire in field. Check wiring and swap faulty valve wires on the controller terminal block with known working zones. If the same outputs are still locked on, please contact our Customer Service team
<b>Pump start relay chattering</b>	Faulty relay or pump contactor. Find an electrician to check voltage on relay or contactor

<b>Rain sensor not working</b>	For third party sensors, this could be faulty wiring or sensor. Check rain sensor information on <b>Holman Home</b> and check the wiring on sensor. For our <b>EVIE Sensor</b> , refer to the sensor manual provided for troubleshooting
<b>Test function not working</b>	Test function will not work unless appropriate <b>ZONES</b> have <b>RUN</b> times allocated to <b>STARTS A, B or C</b> in <b>Holman Home</b>

We really appreciate having you as a customer, and would like to say thank you for choosing us. Should you have any questions about this product or its operation please call customer service on 1300 716 188.

We hope you are happy with our product and if you have a moment to leave a review, we would like to hear your feedback on the Product Review website.

[www.productreview.com.au](http://www.productreview.com.au) then search for our product name

Head Office/Service

11 Walters Drive, Osborne Park WA 6017


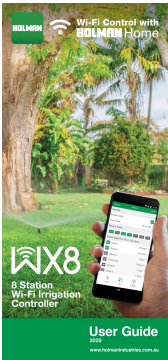
Tel: +61 8 9416 9999 Fax: +61 8 9416 9920

[service@holmanindustries.com.au](mailto:service@holmanindustries.com.au)

[www.holmanindustries.com.au](http://www.holmanindustries.com.au)

Copyright © 2020 Holman Industries

## Documents / Resources

 <p>The image shows the physical Holman WX8 8 Station Wi-Fi Irrigation Controller. It is a grey, rectangular unit with a circular dial and several buttons. The Holman logo and 'WX8' are visible at the top. Below the unit, there is a small icon of a smartphone and the text 'User Guide'.</p>	<p><a href="#">HOLMAN WX8 8 Station WiFi Irrigation Controller</a> [pdf] User Guide WX8, 8 Station WiFi Irrigation Controller</p>
 <p>The image shows the cover of the Holman WX8 8 Station Wi-Fi Irrigation Controller User Guide. It features a green background with a photo of a lush garden. A smartphone is shown in the foreground displaying the Holman Home app interface. The text 'WX8 8 Station Wi-Fi Irrigation Controller' and 'User Guide' are clearly visible.</p>	<p><a href="#">HOLMAN WX8 8 Station WiFi Irrigation Controller</a> [pdf] User Guide WX8, 8 Station WiFi Irrigation Controller</p>



