

 **HOLLYLAND** HOLLYLAND Hub8S Duplex Wireless Intercom System



HOLLYLAND Hub8S Duplex Wireless Intercom System User Guide

[Home](#) » [HOLLYLAND](#) » HOLLYLAND Hub8S Duplex Wireless Intercom System User Guide 

Contents

- [1 HOLLYLAND Hub8S Duplex Wireless Intercom System](#)
- [2 Introduction](#)
- [3 Installation](#)
- [4 Pairing](#)
- [5 Parameters](#)
- [6 FCC Requirement](#)
- [7 Frequently Asked Questions \(FAQ\)](#)
- [8 Documents / Resources](#)
 - [8.1 References](#)
- [9 Related Posts](#)



HOLLYLAND Hub8S Duplex Wireless Intercom System



Specifications

- **Product:** Hollyland Solidcom C1 Pro – Hub8S
- **Version:** V1.0.0
- **Description:** Full-duplex wireless noise-cancelling intercom system
- **Operating Band:** 1.9GHz
- **LOS Range:** Up to 1,100ft (350m)

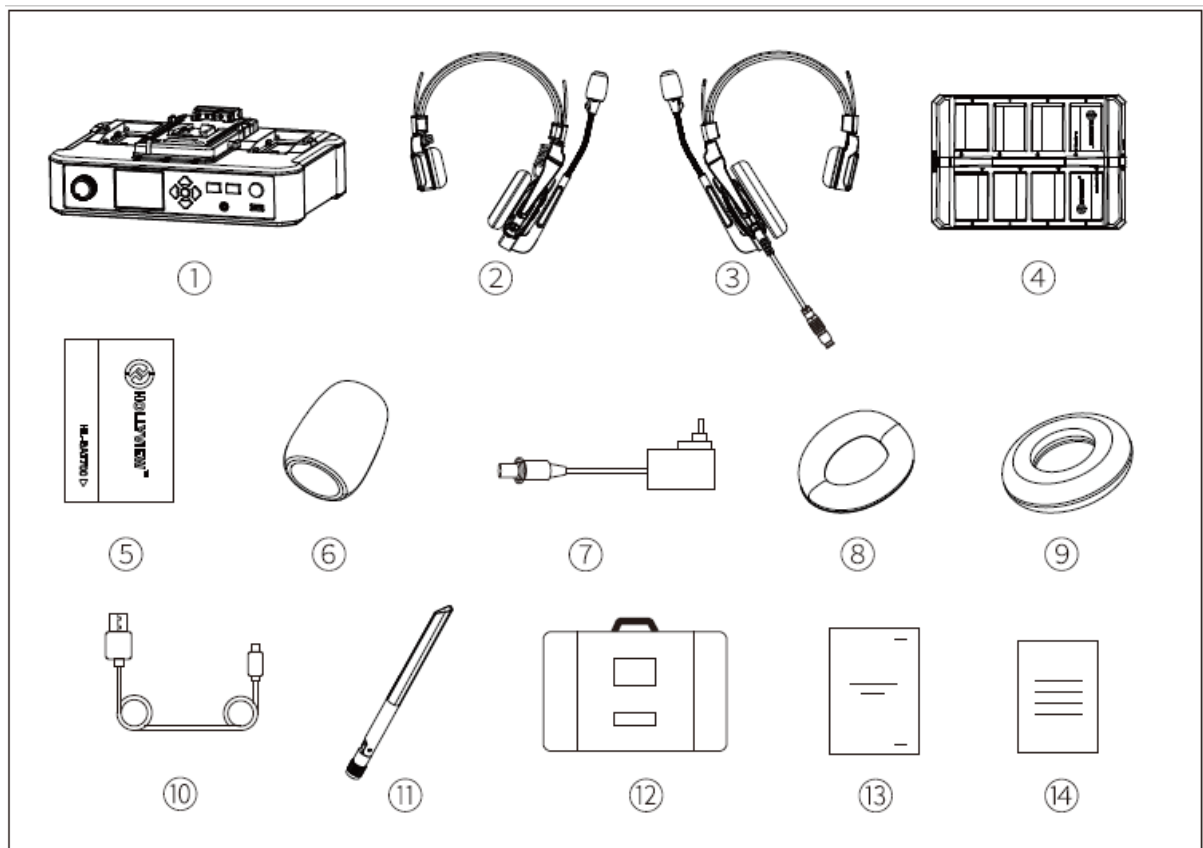
Introduction

Thank you for purchasing Hollyland Solidcom C1 Pro full-duplex wireless noise-cancelling intercom system.

The Solidcom C1 Pro – Hub8S is a full-duplex wireless noise-cancelling intercom system engineered to provide clear audio and all-day wearing comfort in a truly wireless design with no beltpack required. The system operates in the 1.9GHz band, providing a reliable LOS range of up to 1,100ft (350m).

His User Manual will help you through the installation and use of the equipment.

Packing List



Solidcom C1 Pro – Hub8S Intercom Headset Package

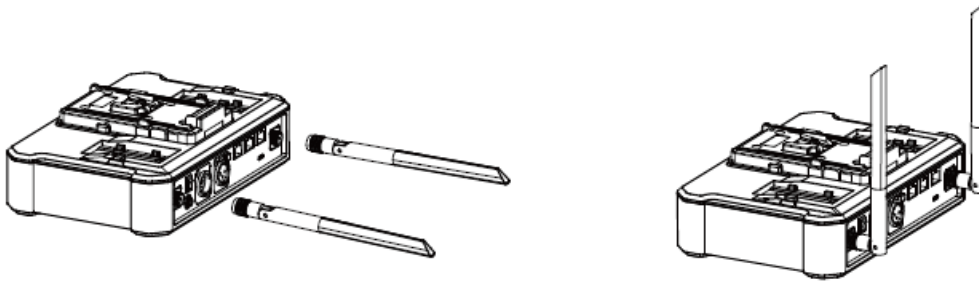
1. Hub x1
2. Remote Headset (With Blue Nameplate) x8
3. 0B10 Wired Headset (With Red Nameplate) x1
4. 8-Slot Charging Case x1
5. Headset Battery x16
6. Microphone Cushion x9
7. 12V/2A DC Adapter x2
8. Over-ear Leather Cushion x9
9. On-ear Foam Cushion x9
10. USB-A to USB-C Cable x1
11. High-Gain Antenna x4
12. Storage Case x1
13. User Manual x4
14. Warranty Card x1

Note: The quantity of the items depends on the product configuration

Quick Guide

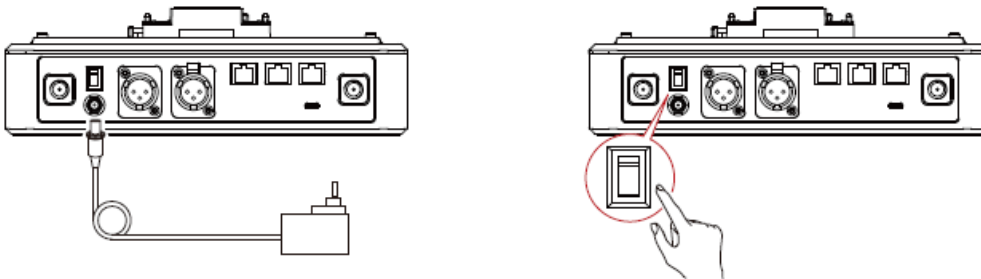
Installation

Installing the Hub Antennas



Powering on the Hub

- Connect the 12V/2A DC adapter to the hub.
- Switch on the Hub.



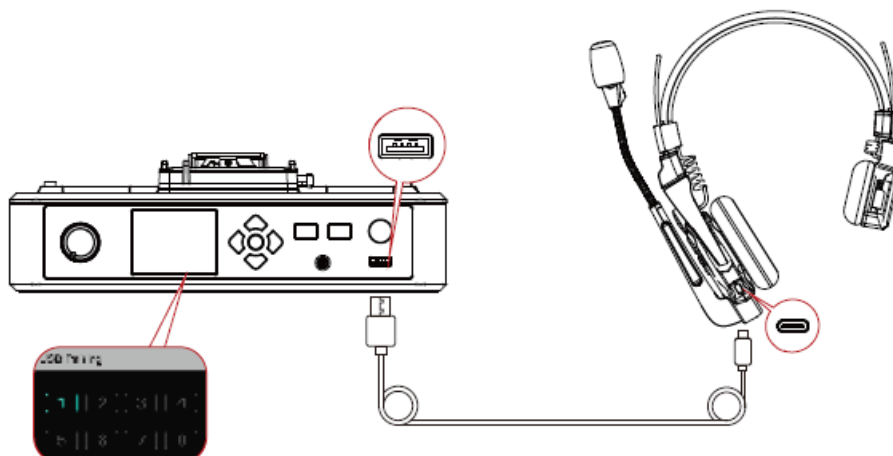
Note: The hub can also be powered on by NP-F batteries, V-mount batteries, or G-mount batteries.

Pairing

The hub and remote headsets that come from the same system will pair with each other automatically right out of the box. Manual pairing is only required when a new headset needs to be added or when a headset or the hub needs to be replaced.

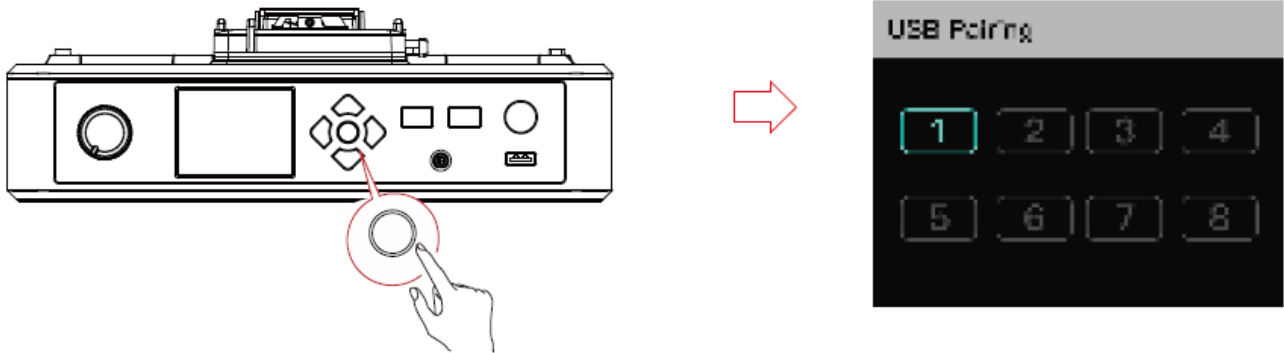
Connecting a Headset to the Hub Using a USB-C Cable

A USB-C cable is required for pairing. Connect the headset to the hub via the USB interface on the hub and the USB-C interface on the headset. Then, the number selection interface will automatically be displayed on the hub. Simply press the arrow buttons to select a number and press the round Menu/Confirmation button to complete number settings and pairing.



Setting Headset Numbers on the Hub

- When repairing and numbering a headset, be sure to turn on all the headsets to avoid selecting duplicate numbers. Otherwise, the other headsets may not be connected.
- In case of wrong numbering for the headset, simply connect it to the hub using a USB cable and perform pairing and numbering again.



Configuring the Hub on the Web Server

Turn on the hub, connect it to a computer using a network cable via the RJ45 interface on the hub and the network port on the computer, configure the same network segment for the computer and hub, open a browser on the computer, and then enter the following addresses (Check the corresponding addresses through the network menu on the hub):

- Default IP address of a master hub: 192.168.218.10
- Default IP address of a remote hub: 192.168.218.11

You can log in to the web server (default password: 12345678) to upgrade the hub, perform headset grouping, and set headset states.

Parameters

	Hub	Wired Headset
Interface	RJ45 interface Power interface (DC interface) 4-wire audio interface (RJ45 socket) USB interface 2-wire audio interface PGM audio interface USB-C interface 0B10 headset interface RF antenna interface	USB-C interface
Antenna	External	Built-in
Power Supply	DC power, NP-F battery, V-mount battery, G-mount battery	700mAh lithium polymer battery
Operation Time	/	About 10 hours
Charging Time	/	About 2.5 hours
Volume Adjustment	Adjustment knob	Adjustable in 7 gears
Power Consumption	<4.5W	<0.3W
Dimensions	(LxWxH):259.9mmx180.5mmx65.5mm (10.2"x7.1"x2.6")	(LxWxH):186.9mmx75.6mmx188.6mm (7.4"x3"x7.4")
Net Weight	About 1300g (45.9oz) with the antenna as excluded	About 170g (6oz) with the battery included
Transmission Range	1,100ft (350m) LOS	
Frequency Band	1.9 GHz (DECT)	
Wireless Technology	Adaptive Frequency Hopping	
Modulation Mode	GFSK	
Wireless Power	≤ 21dBm (125.9mW)	
Bandwidth	1.728MHz	
RX Sensitivity	<-90dBm	

Frequency Response	150Hz-7kHz
Signal-to-Noise Ratio	>55dB
Distortion	<1%
Input SPL	>115dB SPL
Temperature Range	0°C to 45°C (working condition) -10°C to 60°C (storage condition) Note: The highest working temperature is 40°C when the adapter is used for the power supply.

Safety Precautions

- Do not place the product near or inside heating devices (including but not limited to microwave ovens, induction cookers, electric ovens, electric heaters, pressure cookers, water heaters, and gas stoves) to prevent the battery from overheating and exploding.
- Do not use non-original charging cases, cables, and batteries with the product. The use of non-original accessories may cause electric shock, fire, explosion, or other dangers.

Support

If you encounter any problems in using the product or need any help, please contact Hollyland Support Team via the following ways:

- Hollyland User Group
- HollylandTech
- HollylandTech
- HollylandTech
- support@hollyland-tech.com
- www.hollyland-tech.com

Statement

All copyrights belong to Shenzhen Hollyland Technology Co., Ltd. Without the written approval of Shenzhen Hollyland Technology Co., Ltd., no organization or individual may copy or reproduce part or all of any written or illustrative content and disseminate it in any form.

Trademark Statement

All the trademarks are owned by Shenzhen Hollyland Technology Co., Ltd.

Note:

Due to product version upgrades or other reasons, this User Manual will be updated from time to time. Unless otherwise agreed, this document is provided as a guide for use only. All representations, information, and recommendations in this document do not constitute warranties of any kind, express, or implied.

FCC Requirement

Any changes or modifications not expressly approved by the party responsible for compliance could void the user's authority to operate the device. This device complies with Part 15 of the FCC Rules.

Operations are subject to the following two conditions:

1. This device may not cause harmful interference.
2. This device must accept any interference received, including interference that may cause undesired operations.

FCC Radiation Exposure Statement:

The device has been tested and complies with FCC SAR limits.

Note:

This device has been tested and found to comply with the limits for a Class B digital device, pursuant to Part 15 of the FCC Rules. These limits are designed to provide reasonable protection against harmful interference in a residential installation. This device generates, uses, and can radiate radio frequency energy, and if it is not


installed and used in accordance with the instructions, it may cause harmful interference to radio communications. However, there is no guarantee that interference will not occur in a particular installation. If this device does cause harmful interference to radio or television reception, which can be determined by turning the device off and on, the user is encouraged to try to correct the interference by one or more of the following measures:

- Reorient or relocate the receiving antenna.
- Increase the distance between the device and the receiver.
- Connect the device to an outlet on a circuit different from that to which the receiver is connected.
- Consult the dealer or an experienced radio/TV technician for help.

Frequently Asked Questions (FAQ)

- **Q: How do I charge the headset batteries?**
 - A: Place the headsets in the 8-Slot Charging Case provided and connect it to a power source using the included DC adapter.
- **Q: Can I use the system without the hub?**
 - A: No, the hub is essential for proper operation and communication between the headsets.

Documents / Resources

 Hollyland Solidcom C1 Pro - Hub8S User Manual	HOLLYLAND Hub8S Duplex Wireless Intercom System [pdf] User Guide Hub8S, Hub8S Duplex Wireless Intercom System, Hub8S, Duplex Wireless Intercom System, Wireless Intercom System, Intercom System, Intercom System
--	---

References

- [User Manual](#)

[Manuals+](#), [Privacy Policy](#)

This website is an independent publication and is neither affiliated with nor endorsed by any of the trademark owners. The "Bluetooth®" word mark and logos are registered trademarks owned by Bluetooth SIG, Inc. The "Wi-Fi®" word mark and logos are registered trademarks owned by the Wi-Fi Alliance. Any use of these marks on this website does not imply any affiliation with or endorsement.