



HOLLYLAND C1 Pro Solidcom Wireless Intercom Headsets User Manual

[Home](#) » [HOLLYLAND](#) » HOLLYLAND C1 Pro Solidcom Wireless Intercom Headsets User Manual 

Contents

- [1 HOLLYLAND C1 Pro Solidcom Wireless Intercom Headsets](#)
- [2 Product Information](#)
- [3 Product Usage Instructions](#)
- [4 Introduction](#)
- [5 Packing List](#)
- [6 Quick Guide](#)
- [7 Parameters](#)
- [8 Safety Precautions](#)
- [9 Support](#)
- [10 FCC Requirement](#)
- [11 Documents / Resources](#)
 - [11.1 References](#)
- [12 Related Posts](#)



HOLLYLAND C1 Pro Solidcom Wireless Intercom Headsets



Product Information

The Hollyland Solidcom C1 Pro – Hub8S is a full-duplex wireless noise-cancelling intercom system designed to provide clear audio and all-day wearing comfort. It features a truly wireless design with no beltpack required. The system operates in the 1.9GHz band, offering a reliable line-of-sight range of up to 1,100ft (350m). The package includes a hub, eight remote headsets, one 0B10 wired headset, an 8-slot charging case, headset batteries, microphone cushions, a 12V/2A DC adapter, over-ear leather cushions, on-ear foam cushions, a USB-A to USB-C cable, high-gain antennas, a storage case, user manual, and warranty card.

Packing List:

- Solidcom C1 Pro – Hub8S Intercom Headset Package
 - Hub x1
 - Remote Headset (With Blue Nameplate) x8
 - 0B10 Wired Headset (With Red Nameplate) x1
 - 8-Slot Charging Case x1
 - Headset Battery x16
 - Microphone Cushion x9
 - 12V/2A DC Adapter x2
 - Over-ear Leather Cushion x9
 - On-ear Foam Cushion x9

- USB-A to USB-C Cable x1
- High-Gain Antenna x4
- Storage Case x1
- User Manual x4
- Warranty Card x1

- **Note:** The quantity of the items depends on the product configuration.

Parameters:

Hub	Wired Headset	
Interface	RJ45 interface, Power interface (DC interface), 4-wire audio interface (RJ45 socket), USB interface, 2-wire audio interface, PG M audio interface, USB-C interface, 0B10 headset interface, RF antenna interface	
Antenna	External	Built-in
Power Supply	DC power, NP-F battery, V-mount battery, G-mount battery	
Operation Time	/	About 10 hours
Charging Time	/	About 2.5 hours
Volume Adjustment	Adjustment knob	Adjustable in 7 gears
Power Consumption	/	

Product Usage Instructions

Installing the Hub Antennas

To install the hub antennas, follow these steps:

1. Locate the antennas included in the package.
2. Connect the antennas to the designated RF antenna interfaces on the hub.

Powering on the Hub

To power on the hub, follow these steps:

- Connect the hub to a power source using the provided 12V/2A DC adapter or other compatible power sources like NP-F batteries, V-mount batteries, or G-mount batteries.
- Press the power button to turn on the hub.
- **Note:** The hub can also be powered on by NP-F batteries, V-mount batteries, or G-mount batteries.

Setting Headset Numbers on the Hub

When repairing and numbering a headset, follow these steps:

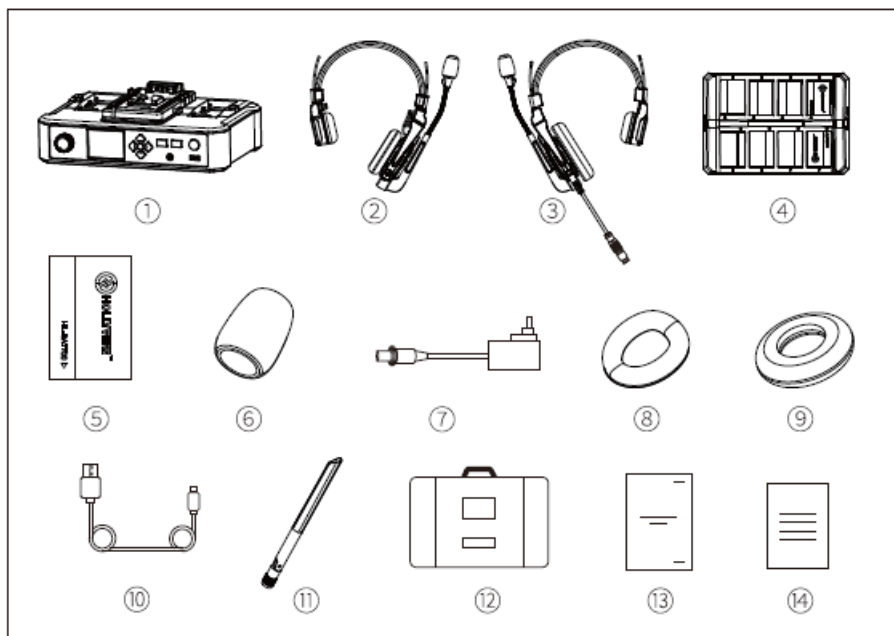
1. Ensure all headsets are turned on to avoid selecting duplicate numbers.
2. If a headset has been numbered incorrectly, connect it to the hub using a USB cable.
3. Perform pairing and numbering again to assign the correct number to the headset.

Introduction

Thank you for purchasing the Hollyland Solidcom C1 Pro full-duplex wireless noise-canceling intercom system. The Solidcom C1 Pro – Hub8S is a full-duplex wireless noise-canceling intercom system engineered to provide clear audio and all-day wearing comfort in a truly wireless design with no belt-pack required. The system operates in the 1.9GHz band, providing a reliable LOS range of up to 1,100ft (350m). This User Manual will help you through the installation and use of the equipment

Packing List

Solidcom C1 Pro – Hub8S Intercom Headset Package

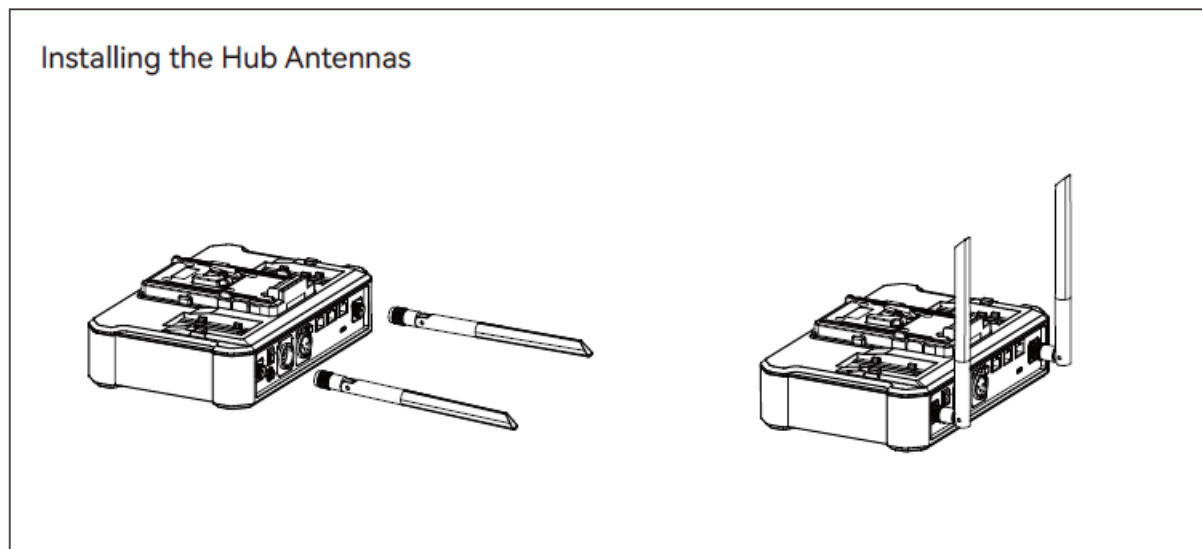


- Hub x1
- Remote Headset (With Blue Nameplate) x8
- 0B10 Wired Headset (With Red Nameplate) x1
- 8-Slot Charging Case x1
- Headset Battery x16
- Microphone Cushion x9
- 12V/2A DC Adapter x2
- Over-ear Leather Cushion x9
- On-ear Foam Cushion x9
- USB-A to USB-C Cable x1
- High-Gain Antenna x4
- Storage Case x1
- User Manual x4
- Warranty Card x1

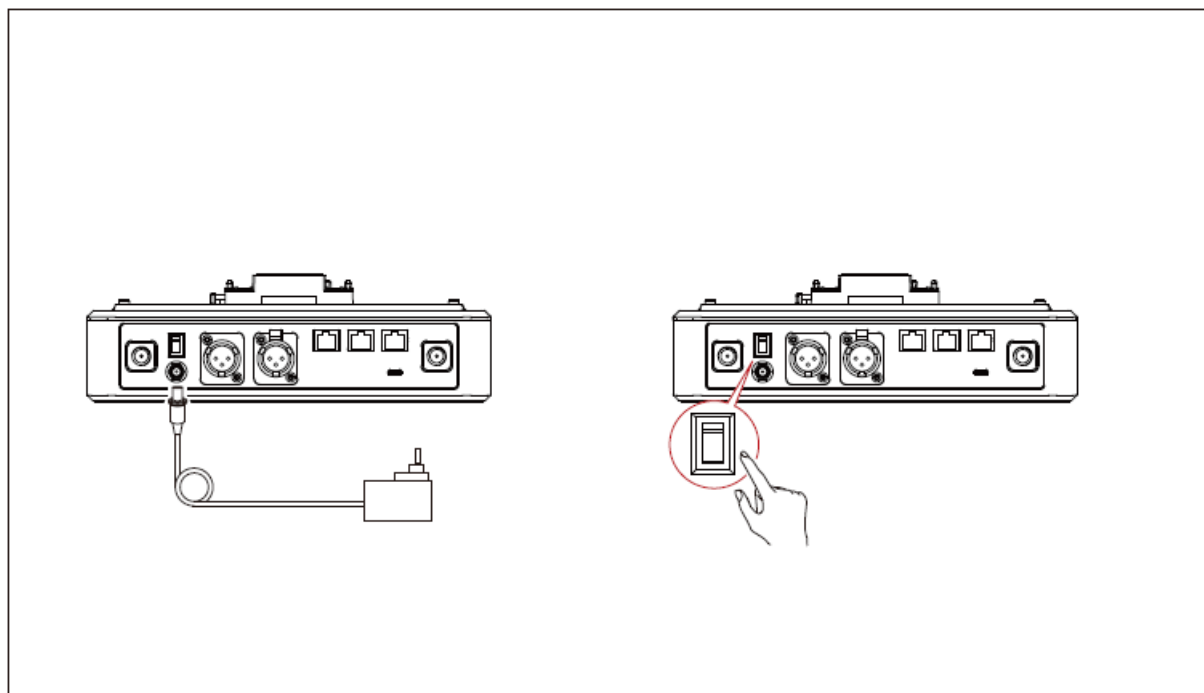
Note: The quantity of the items depends on the product configuration.

Quick Guide

Installing the Hub Antennas



Powering on the Hub



Note: The hub can also be powered on by NP-F batteries, V-mount batteries, or G-mount batteries

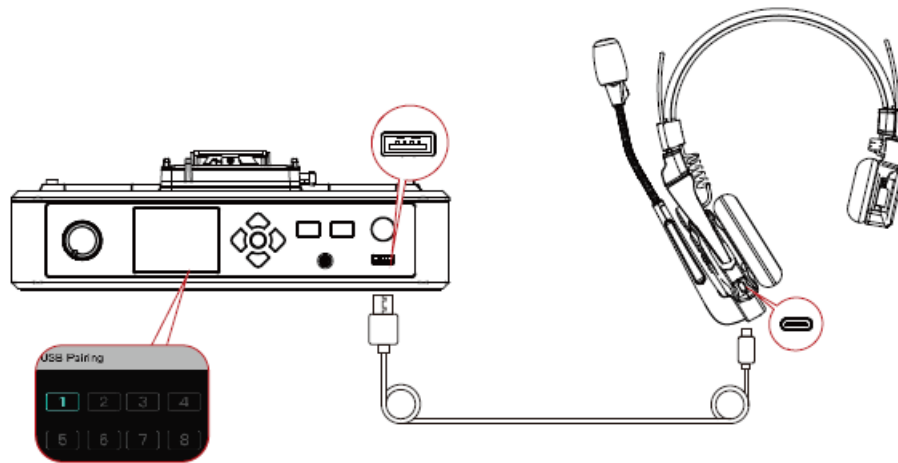
Pairing

The hub and remote headsets that come from the same system will pair with each other automatically right out of the box. Manual pairing is only required when a new headset needs to be added or when a headset or the hub needs to be replaced.

Connecting a Headset to the Hub Using a USB-C Cable

A USB-C cable is required for pairing. Connect the headset to the hub via the USB interface on the hub and the USB-C interface on the headset. Then, the number selection interface will automatically be displayed on the hub.

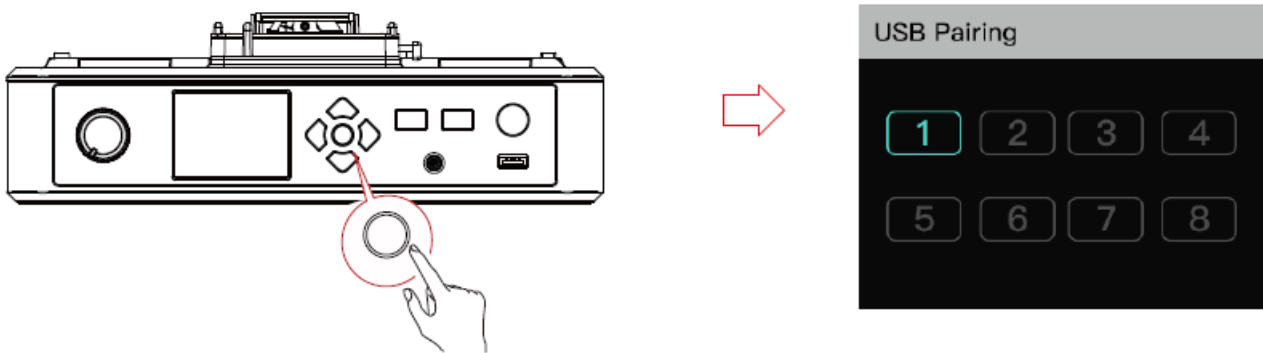
Simply press the arrow buttons to select a number and press the round Menu/Confirmation button to complete number settings and pairing.



Setting Headset Numbers on the Hub

When repairing and numbering a headset, be sure to turn on all the headsets to avoid selecting duplicate numbers. Otherwise, the other headsets may not be connected.

In case of wrong numbering for the headset, simply connect it to the hub using a USB cable and perform pairing and numbering again.



Configuring the Hub on the Web Server

Turn on the hub, connect it to a computer using a network cable via the RJ45 interface on the hub and the network port on the computer, configure the same network segment for the computer and hub, open a browser on the computer, and then enter the following addresses (Check the corresponding addresses through the network menu on the hub):

- Default IP address of a master hub: 192.168.218.10
- Default IP address of a remote hub: 192.168.218.11

You can log in to the web server (default password: 12345678) to upgrade the hub, perform headset grouping, and set headset states.

Parameters

	Hub	Wired Headset
Interface	RJ45 interface Power interface (DC interface) 4-wire audio interface (RJ45 socket) USB interface 2-wire audio interface PGM audio inte rface USB-C interface 0B10 headset interface RF antenna in terface	USB-C interface
Antenna	External	Built-in
Power Supply	DC power, NP-F battery, V-mount battery, G-mount battery	700mAh lithium polymer battery
Operation Time	/	About 10 hours
Charging Time	/	About 2.5 hours
Volume Adjustment	Adjustment knob	Adjustable in 7 gears
Power Consumption	<4.5W	<0.3W
Dimensions	(LxWxH): 259.9mmx180.5mmx65.5mm (10.2"x7.1"x2.6")	(LxWxH): 186.9mmx75.6mmx188.6mm (7.4"x3"x7.4")
Net Weight	About 1300g (45.9oz) with the antennas excluded	About 170g (6oz) with the battery included
Transmission Range	1,100ft (350m) LOS	
Frequency Band	1.9 GHz (DECT)	
Wireless Technology	Adaptive Frequency Hopping	
Modulation Mode	GFSK	
Wireless Power	≤ 21dBm (125.9mW)	
Bandwidth	1.728MHz	
RX Sensitivity	<-90dBm	

Frequency Response	150Hz–7kHz
Signal-to-Noise Ratio	>55dB
Distortion	<1%
Input SPL	>115dB SPL
Temperature Range	0°C to 45°C (working condition) –10°C to 60°C (storage condition) Note: The highest working temperature is 40°C when the adapter is used for the power supply.

Safety Precautions

- Do not place the product near or inside heating devices (including but not limited to microwave ovens, induction cookers, electric ovens, electric heaters, pressure cookers, water heaters, and gas stoves) to prevent the battery from overheating and exploding.
- Do not use non-original charging cases, cables, and batteries with the product. The use of non-original accessories may cause electric shock, fire, explosion, or other dangers

Support

If you encounter any problems in using the product or need any help, please contact Hollyland Support Team via the following ways:

support@hollyland-tedl.com
www.hollyland-tech.com

Statement

All copyrights belong to Shenzhen Hollyland Technology Co., Ltd. Without the written approval of Shenzhen Hollyland Technology Co., Ltd., no organization or individual may copy or reproduce part or all of any written or illustrative content and disseminate it in any form.

Trademark Statement

All the trademarks are owned by Shenzhen Hollyland Technology Co., Ltd.

Note:

Due to product version upgrades or other reasons, this User Manual will be updated from time to time. Unless otherwise agreed, this document is provided as a guide for use only. All representations, information, and recommendations in this document do not constitute warranties of any kind, express, or implied.

FCC Requirement

Any changes or modifications not expressly approved by the party responsible for compliance could void the

user’s authority to operate the device. This device complies with Part 15 of the FCC Rules.

Operations are subject to the following two conditions:

1. This device may not cause harmful interference.
2. This device must accept any interference received, including interference that may cause undesired operations.

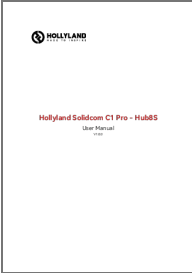
FCC Radiation Exposure Statement:

The device has been tested and complies with FCC SAR limits.

Note: This device has been tested and found to comply with the limits for a Class B digital device, pursuant to Part 15 of the FCC Rules. These limits are designed to provide reasonable protection against harmful interference in a residential installation. This device generates, uses, and can radiate radio frequency energy, and if it is not installed and used in accordance with the instructions, it may cause harmful interference to radio communications. However, there is no guarantee that interference will not occur in a particular installation. If this device does cause harmful interference to radio or television reception, which can be determined by turning the device off and on, the user is encouraged to try to correct the interference by one or more of the following measures:

- Reorient or relocate the receiving antenna.
- Increase the distance between the device and the receiver.
- Connect the device to an outlet on a circuit different from that to which the receiver is connected.
- Consult the dealer or an experienced radio/TV technician for help.

Documents / Resources

	<p>HOLLYLAND C1 Pro Solidcom Wireless Intercom Headsets [pdf] User Manual C1 Pro Solidcom Wireless Intercom Headsets, C1 Pro, Solidcom Wireless Intercom Headsets, Wireless Intercom Headsets, Intercom Headsets, Headsets</p>
---	--

References

- [User Manual](#)