

HOLLYLAND C1 Headset Solidcom HUB Base



HOLLYLAND C1 Headset Solidcom HUB Base User Guide

[Home](#) » [HOLLYLAND](#) » HOLLYLAND C1 Headset Solidcom HUB Base User Guide 

Contents

- [1 HOLLYLAND C1 Headset Solidcom HUB Base](#)
- [2 Product Usage Instructions](#)
- [3 PRODUCT INTERFACES](#)
- [4 PRODUCT INSTALLATION AND USAGE GUIDE](#)
- [5 FCC Requirement](#)
- [6 Documents / Resources](#)
 - [6.1 References](#)
- [7 Related Posts](#)



HOLLYLAND C1 Headset Solidcom HUB Base



Specifications

- **Type:** Monaural
- **Cable Length:** Approximately 61" (1550mm)
- **Frequency Information:**
 - **Speaker:** 100Hz ~ 10KHz
 - **Microphone:** 100Hz ~ 10KHz
- **Distortion:** < 1%
- **Microphone Sensitivity:** Electret (Single-Pointing)
- **Microphone Type:** Electret (Single-Pointing)
- **Impedance:** Not specified
- **Weight:** Not specified
- **Working Temperature:** Not specified

Product Usage Instructions

Product Installation

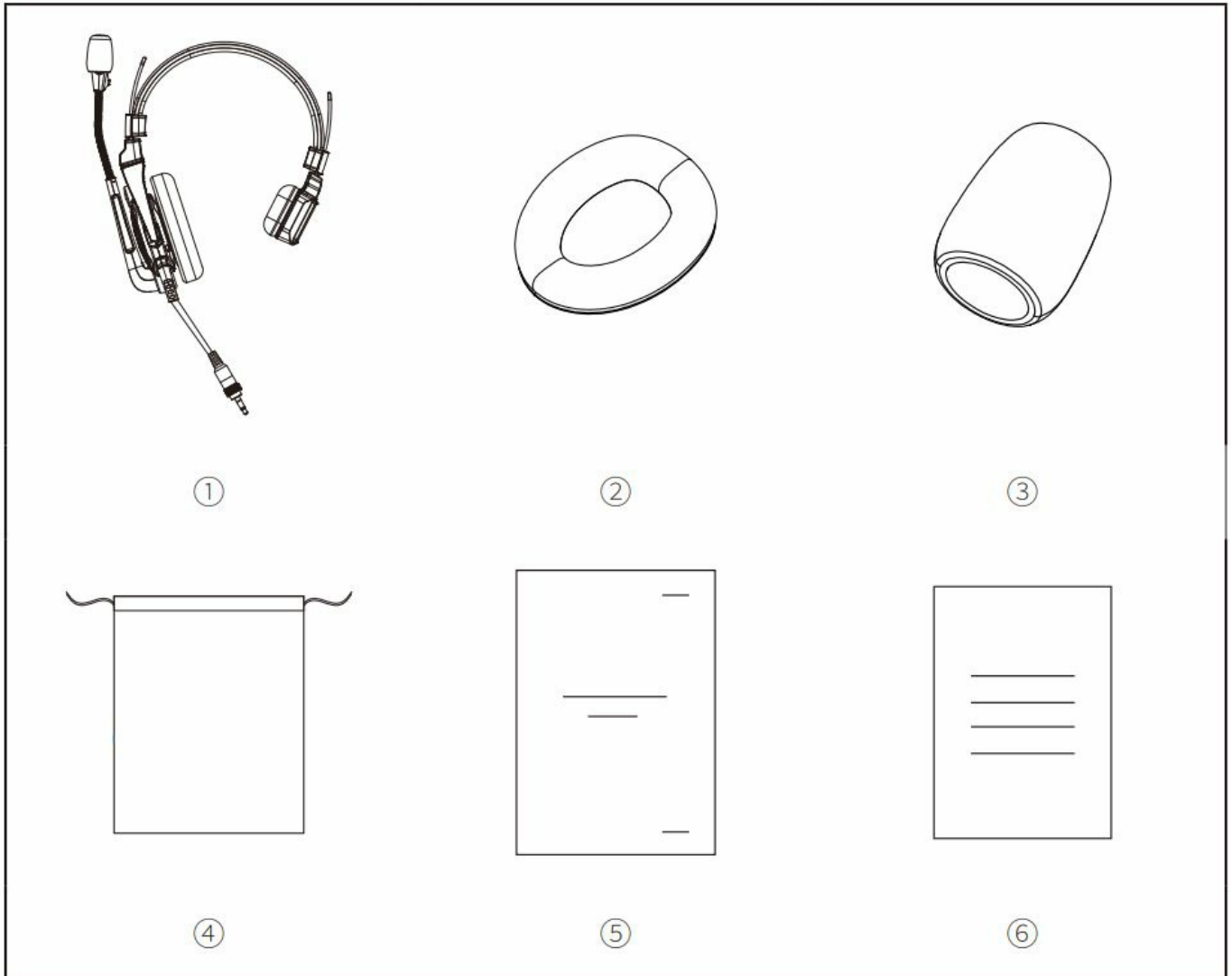
1. Install Solidcom C1 headset:
 - Plug the headset into the 3.5 mm port of the HUB Base and rotate the nut clockwise to secure the headset.
 - Move the microphone boom down until you hear a 'click'. You can now start talking.
 - To listen only, make the microphone boom upright. You will hear a 'click' sound, and the microphone will mute.

FAQ

- **Q: What should I do if I experience interference during usage?**

- **A:** If you experience interference, ensure that the headset is properly connected to the HUB Base. Check for any obstructions or other electronic devices that may be causing interference. If the issue persists, contact HollylandTech support for assistance.
- **Q: How do I clean the headset?**
 - **A:** Use a soft, dry cloth to gently wipe the headset's surfaces. Avoid using harsh chemicals or liquids that may damage the headset's components. Ensure the headset is unplugged before cleaning.

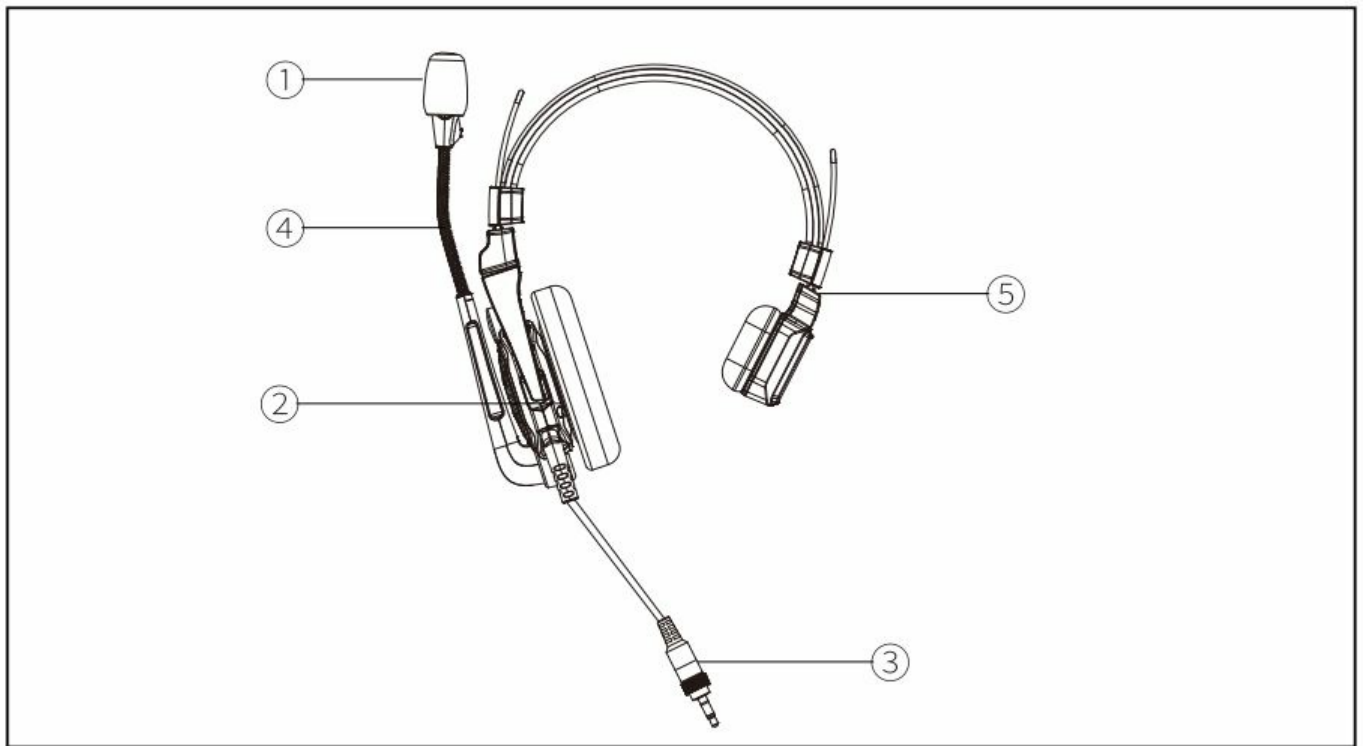
PACKING LIST



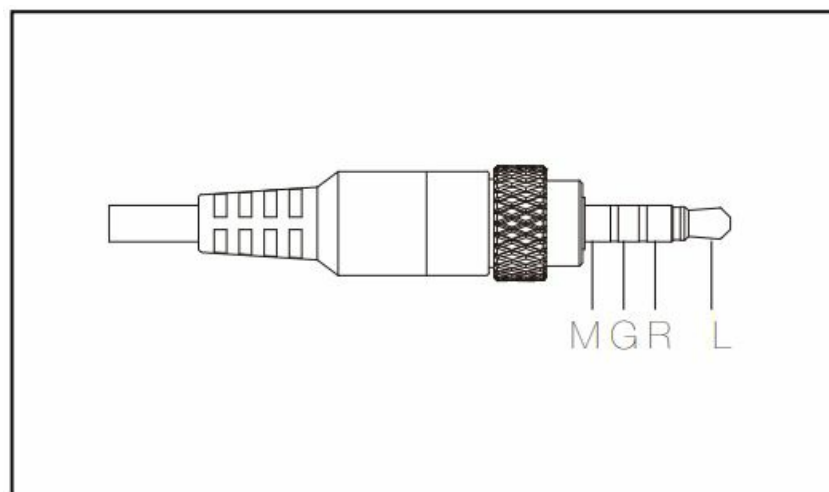
1. Headset
2. Over-ear Leather Cushion
3. Microphone Cushion
4. Storage Bag
5. Quick Guide
6. Warranty Card

Note: The amount of items depends on the configuration of a product.

PRODUCT INTERFACES



1. Microphone
2. Speaker
3. Headset Jack
4. Microphone Boom
5. Adjustable Headband



3.5 mm Headset Jack
Jack Definition: M G R L

PRODUCT INSTALLATION AND USAGE GUIDE



Install Solidcom C1 headset:

1. Plug the headset into the 3.5 mm port of the HUB Base and rotate the nut clockwise to secure the headset.
2. Move the microphone boom down, and you can hear a 'click'. Then you can start to talk.
3. If you just want to listen, make the microphone boom up right. Then, you will hear a 'click' sound. And microphone will be mute at the time.

SPECIFICATIONS

Type	Monaural
Cable Length	Approximately 61" (1550mm)
Frequency Information	Speaker: 100Hz ~ 10KHz Microphone: 100Hz ~ 10KHz
Distortion	< 1%
Microphone Sensitivity	-38±4 dBV @1KHz, 94dBSPL
Microphone Type	Electret (Single-Pointing)
Impedance	Speaker: $32\Omega \pm 15\%$ @1KHz 1mW Microphone: Max. 2.2k Ω
Weight	Approximately 6 oz. (170g)
Working Temperature	0~+45°C (working status) -10~ +60°C (working status)

Safety Precautions

Do not place the product near or inside heating devices including but not limited a microwave ovens, induction cookers, electric ovens, electric heaters, pressure cookers, water heaters, gas stoves) to prevent the battery from overheating and exploding. Never use non-original charging cases, cables, and batteries with the product. The use of non-original spare parts may cause electric shock, fire, explosion or other dangers.

Support

If you encounter any problems in using the product and need any help, please contact the Hollyland Support Team via the following ways:

- Hollyland User Group
- HollylandTech
- HollylandTech
- HollylandTech
- support@hollyland-tech.com
- www.hollyland-tech.com

Statement:

All copyrights belong to Shenzhen Hollyland Technology Co., LTD.

Trademark Statement:

Without the written approval of Shenzhen Hollyland Technology Co., LTD, no organization or individual may copy or reproduce part or all of the content of the text without authorization, and may not disseminate it in any form. organization or individual may copy or reproduce part or all of the content of the text without authorization, and may not disseminate it in any form.

Note:

Due to product version upgrades or other reasons, this quick guide will be updated from time to time. Unless otherwise agreed, this document is provided as a guide for use only. All representations, information, and recommendations in this document do not constitute warranties of any kind, express or implied.

FCC Requirement

Any changes or modifications not expressly approved by the party responsible for compliance could void the user's authority to operate the equipment. This device complies with Part 15 of the FCC Rules. Operation is subject to the following two conditions:

1. this device may not cause harmful interference
2. this device must accept any interference received, including interference that may cause undesired operation.

FCC Radiation Exposure Statement:

The device has been tested and complies with FCC SAR limits.

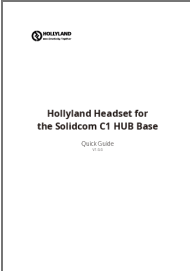
Note:

This equipment has been tested and found to comply with the limits for a Class B digital device, pursuant to Part 15 of the FCC Rules. These limits are designed to provide reasonable protection against harmful interference in a


residential installation. This equipment generates, uses, and can radiate radio frequency energy, and if not installed and used in accordance with the instructions, may cause harmful interference to radio communications. However, there is no guarantee that interference will not occur in a particular installation. If this equipment does cause harmful interference to radio or television reception, which can be determined by turning the equipment off and on, the user is encouraged to try to correct the interference by one or more of the following measures:

- Reorient or relocate the receiving antenna
- Increase the separation between the equipment and the receiver.
- Connect the equipment into an outlet on a circuit different from that to which the receiver is connected.
- Consult the dealer or an experienced radio/TV technician for help

Documents / Resources

	HOLLYLAND C1 Headset Solidcom HUB Base [pdf] User Guide C1 Headset Solidcom HUB Base, C1, Headset Solidcom HUB Base, Solidcom HUB Base, HUB Base
--	---

References

-  [Hollyland - Wireless Video Transmitter, Intercom, Microphone](#)
- [User Manual](#)

[Manuals+](#), [Privacy Policy](#)

This website is an independent publication and is neither affiliated with nor endorsed by any of the trademark owners. The "Bluetooth®" word mark and logos are registered trademarks owned by Bluetooth SIG, Inc. The "Wi-Fi®" word mark and logos are registered trademarks owned by the Wi-Fi Alliance. Any use of these marks on this website does not imply any affiliation with or endorsement.