

hohem V2S iSteady V2S Smartphone Gimbal with AI Sensor



hohem V2S iSteady V2S Smartphone Gimbal with AI Sensor User Manual

[Home](#) » [hohem](#) » hohem V2S iSteady V2S Smartphone Gimbal with AI Sensor User Manual 

Contents

- [1 hohem V2S iSteady V2S Smartphone Gimbal with AI Sensor](#)
- [2 iSteady V2S Overview](#)
- [3 Battery and Charging](#)
- [4 FAQs](#)
- [5 Warranty Terms](#)
- [6 Documents / Resources](#)
 - [6.1 References](#)
- [7 Related Posts](#)

hohem

hohem V2S iSteady V2S Smartphone Gimbal with AI Sensor



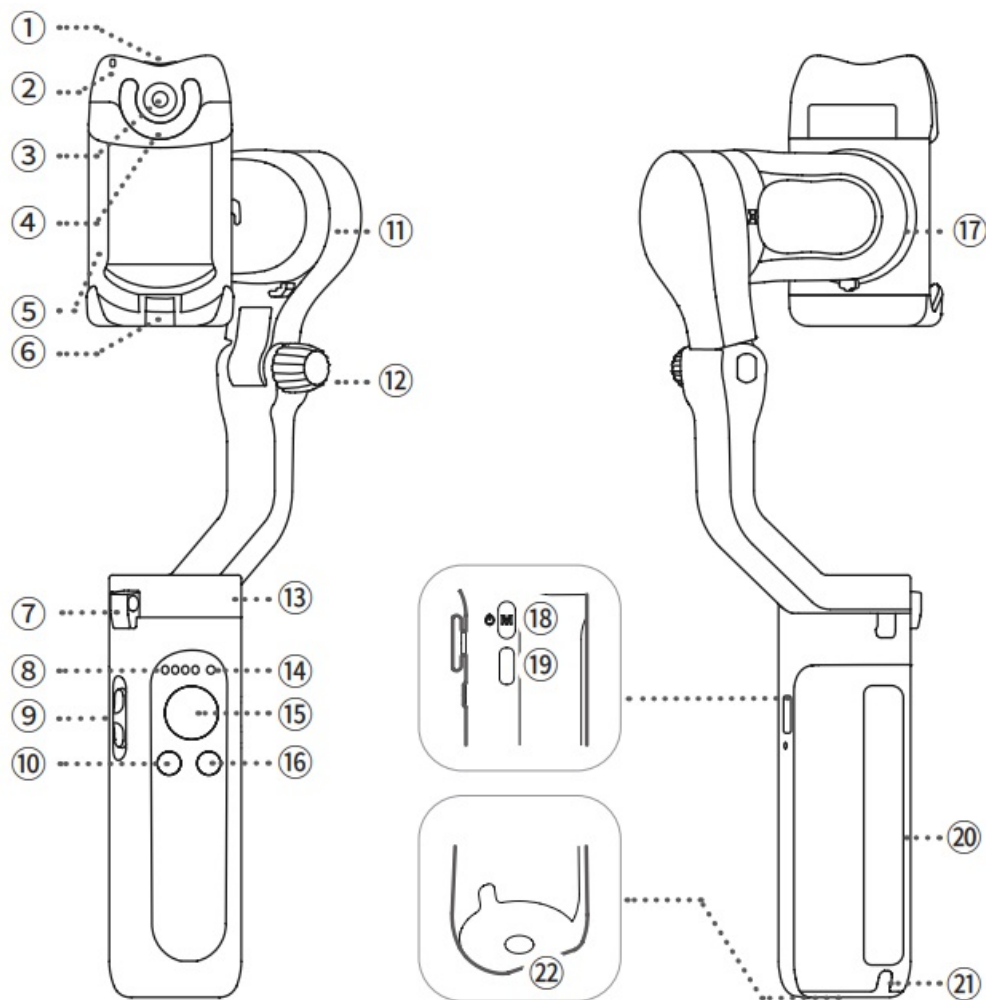
Warning & Disclaimer

Thank you for purchasing the Hohem product. By using this product, you hereby signify that you have read this disclaimer and warning carefully. In addition, you understand and agree to abide by the terms and conditions herein. You acknowledge that you are solely responsible for your conduct while interacting with this product and for any consequences thereof. You agree to use this product only for proper purposes and by all applicable laws, rules, and regulations, and all terms, precautions, practices, policies and guidelines Hohem has made and may make available. Hohem accepts no liability for damage, injury, or any legal responsibility incurred directly or indirectly from the use of this product. The user shall observe safe and lawful practices including, but not limited to, those outlined in this document.

This document and all other collateral documents are subject to change at the sole discretion of Hohem. For up-to-date product information, visit www.hohem.com and click on the product page for this product.

- Items marked “*” are optional accessories that are sold separately.
- Mount your mobile phone before powering on iSteady V2 S.
- If no mobile phone is detected or the motor is overloaded because the phone is not balanced well, the gimbal will shut down after a warning beeping.

iSteady V2S Overview



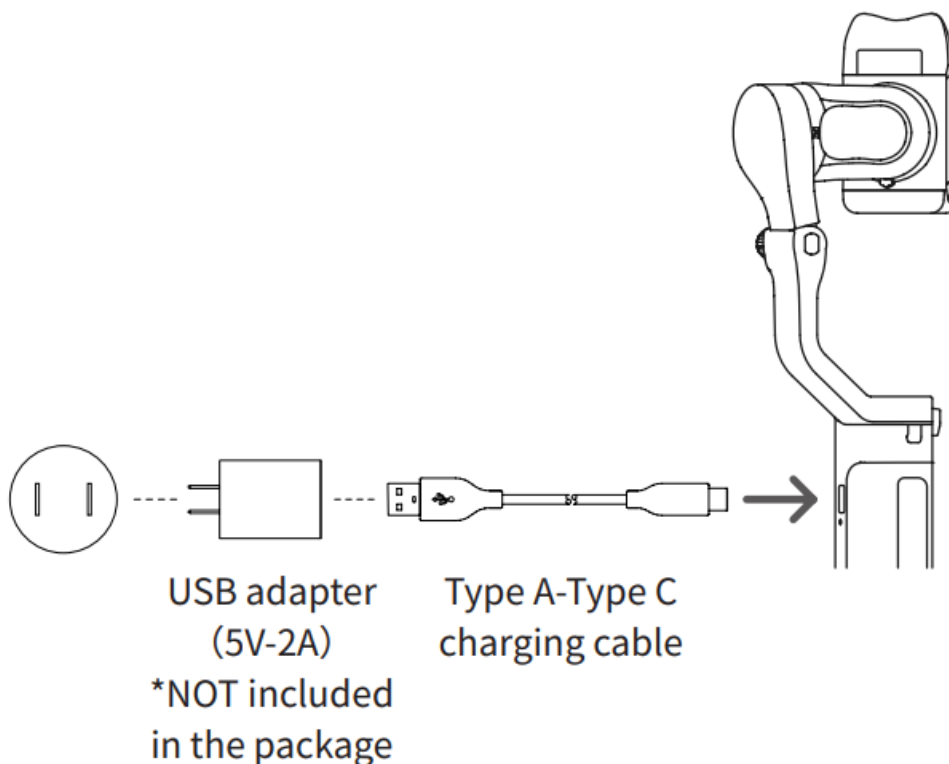
1. AI Vision Sensor & LED Video Light Power Button
2. AI Vision Indicator
3. AI Vision Sensor
4. LED Video Light
5. Phone Clamp
6. Folding Lock A
7. Folding Lock B
8. Working Mode Indicator (Battery Indicator)
9. Zoom Slider
10. Shutter Button
11. Tilt Motor
12. Knob
13. Pan Motor
14. Bluetooth Light
15. Joystick
16. Function Button
17. Roll Motor
18. M Button (Power On/Off)
19. Charging Port (Type C)
20. Handle (Battery built-in)
21. Lanyard Hole

Battery and Charging

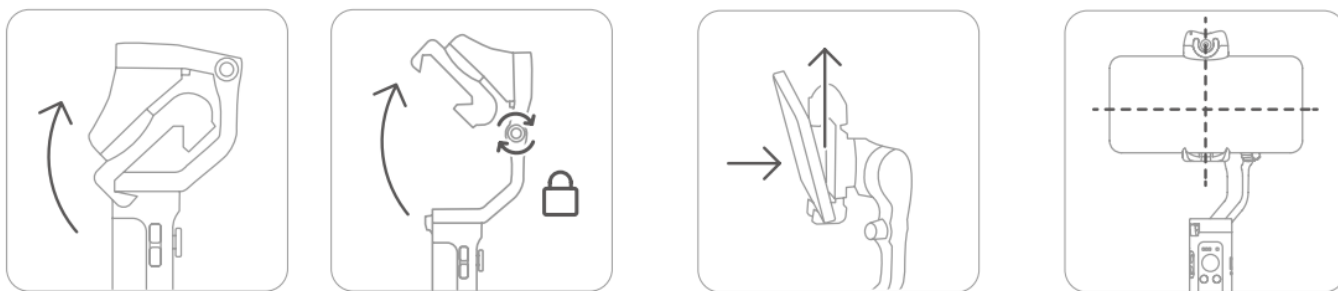
Please fully charge the iSteady V2S before using it for the first time.

Charging Method

To charge the iSteady V2S, connect a USB adapter (not included, choose 5V-2A for better results) to the charging port with the provided USB-C charging cable.



Mount & Balance Mobile Phone on the Gimbal?



1. Expand the gimbal

2. Tighten the knob by turning it clockwise.

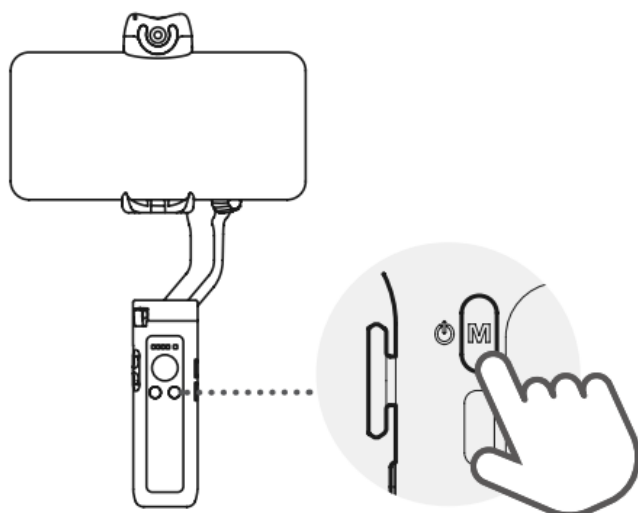
3. Make sure that the phone camera is on the left side of the clamp. Insert your mobile device by putting it stuck in the bottom of the phone clamp and pulling the top side of the clamp to clip it into place.

4. Slide the phone and keep it clamped and balanced centrally before powering on. The gimbal would not function properly if the knob was not tightened.

5. Ensure your phone is centrally clamped to the rubber pads, otherwise, the gimbal will vibrate or turn off automatically.

Booting up iSteady V2S

AI Visual Tracking & LED Video Light



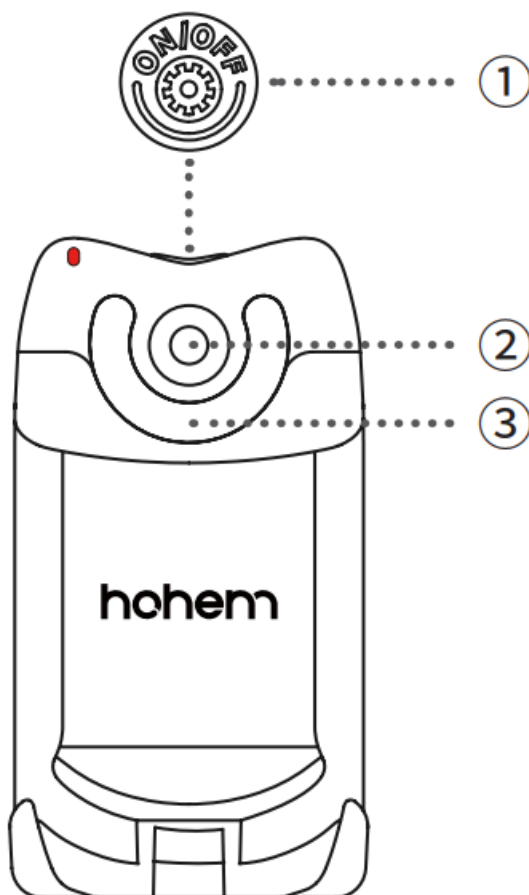
Long press M button for 3 seconds to power on

Before operation, ensure that the gimbal is powered on.

AI Tracking

Press the button on the top to power on the AI Vision Sensor (Press it for 3s to power it off). The red indicator LED light and double-flashed LED video light mean that the AI Sensor is on. (AI Smart Tracking starts after an OK gesture)

Gesture Control



(Note: The best distance of gesture control is between 0.5 and 1.5 meters (1.6 – 5 ft). Make sure that both gestures and faces are shown in front of the AI sensor within this range.)

LED Video Light (make sure that AI vision sensor is on)

Press the button to turn on the light and adjust the light intensity. LED turns according to low-medium high-close modes.



Start smart tracking

Take an OK gesture towards the AI vision sensor and the AI indicator turns green.



Turn off smart tracking: Show a palm gesture towards the AI vision sensor and AI vision the indicator turns red.

Switch between landscape and portrait mode



Portrait mode

Two thumbs right



Landscape mode

Two thumbs up

FAQs

How to make AI vision positioning adjustments?

(Customized Composition)

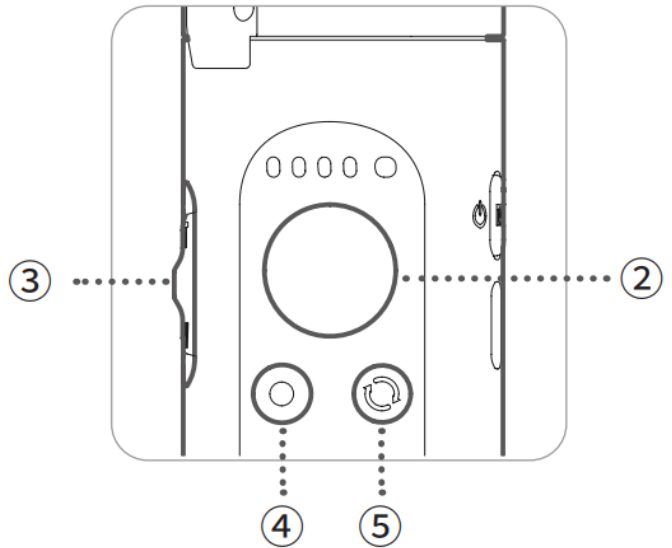
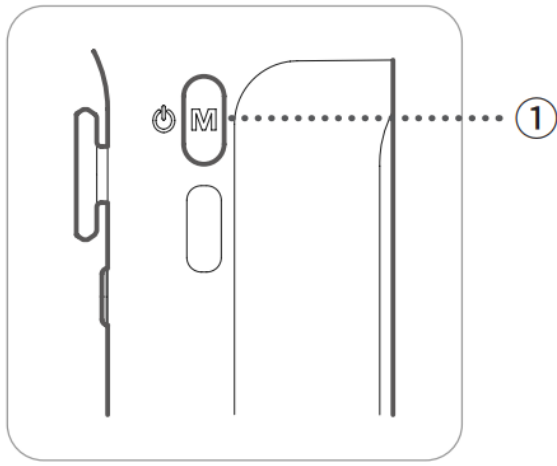


Scan the QR code for a tutorial on customized composition

If the framed subject cannot be centred on the phone screen, or you want to customize the AI vision position to be tracked:

1. Make sure the gimbal & AI vision sensors are on.
2. Take the gesture “👉👈” towards the AI vision sensor and the indicator light will quickly blink in green colour.
3. Move in front of the screen until you find the preferred position to be tracked.
4. Show the gesture “👉👈” to lock the position and create the ideal composition (the indicator light will stop flashing).

Button Function



1. M Button(Power Button)

- Press and hold for 3s: Power on/off
- Press once: Switch between working modes (PTF-PF-L-POV)
- Press twice: Standby mode (Press M button to exit)
- Press five times: Auto calibration

2. Joystick

- Up/Down Tilt rotation control
- Left/Right Pan rotation control
- (It can control the roll rotation through the “Left/Right Joystick” Setting in the Hohem Joy App)

3. Zoom Slider

- (Make sure that Bluetooth is already connected.Only Available in the Hohem Joy and Android 10.0 or later.)
- Push up: Zoom in
- Push down: Zoom out

4. Shutter Button (Please ensure the Bluetooth pairing)

- Press once: Take a photo, Start/End the video
- Press twice: PHOTO/VIDEO switch
- Press three times: Front/Rear camera switch (Make sure that Bluetooth is already connected. Only Available in the Hohem Joy and Android 10.0 or later.)

5. Function Button

- Press once: Landscape mode/Portrait mode
- Press twice: Recenter the gimbal
- Press three times: 180° inception mode/ 180° spin shot (auto rotation)
- Press seven times: Remote control* pairing
- When paired with a remote control*
- Press the function button once: Cancel pairing
- Press the function button twice to clear the paired remote control* (The paired remote control will be unavailable and needs to be repaired.)
- Press on the function button to check the gimbal battery level (The remote control is sold separately.)

Working Mode & Follow Speed

Working Mode

- Scan the QR code to View how to use working modes.

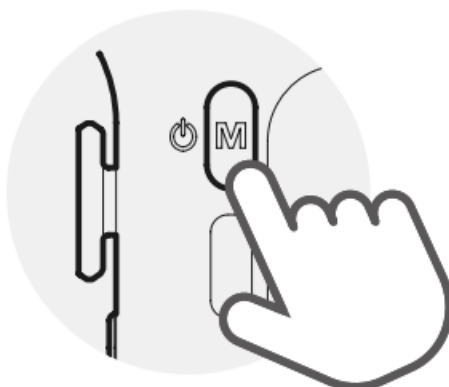


- Before pressing Zoom Slider and Shutter Button, please make sure that the Bluetooth is connected.

Follow the steps below

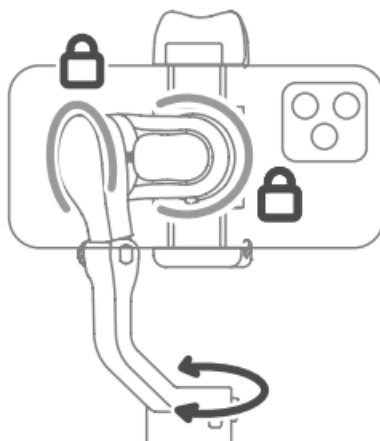
1. Turn on the Bluetooth of your mobile device.
2. Search for devices and tap on the device name starting with "V2S".
3. It is connected when the Bluetooth indicator shows green.

To switch between working modes, please press the M button once.



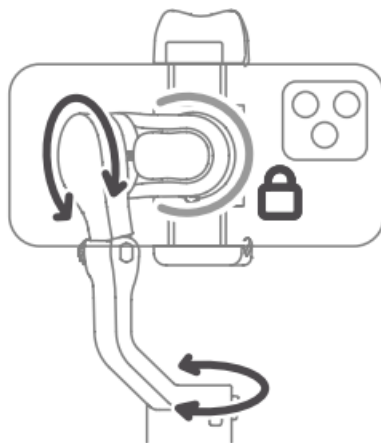
Pan Follow

When you rotate the handle left/right, the camera will follow the handle movements. The tilt motor does not follow within the angle range of -45° ~ $+45^{\circ}$ movement, if exceeds this range, the gimbal will follow the tilt movement, and the roll motor is locked without following the movement.



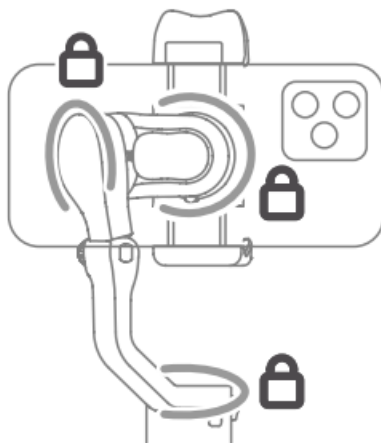
Pan&Tilt Follow

This is the default working mode. When you rotate the handle left/right/tilt up/tilt down, the camera will follow the handle movements and the roll motor is locked without following the movement.



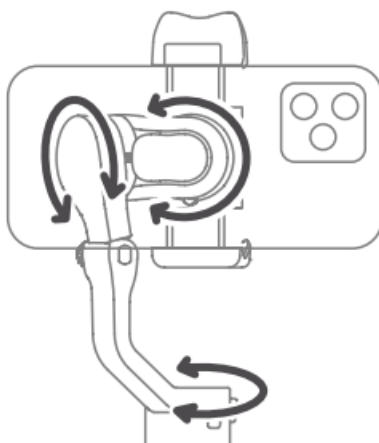
All Lock

The roll and pan motors are locked without following the movement. The tilt motor does not follow the angle range of -45° ~ $+45^{\circ}$ movement, if exceeds this range, the gimbal will follow the tilt movement.



POV (All Follow)

First-person view 360° following movement(Pan/Tilt/Roll)



Follow Speed

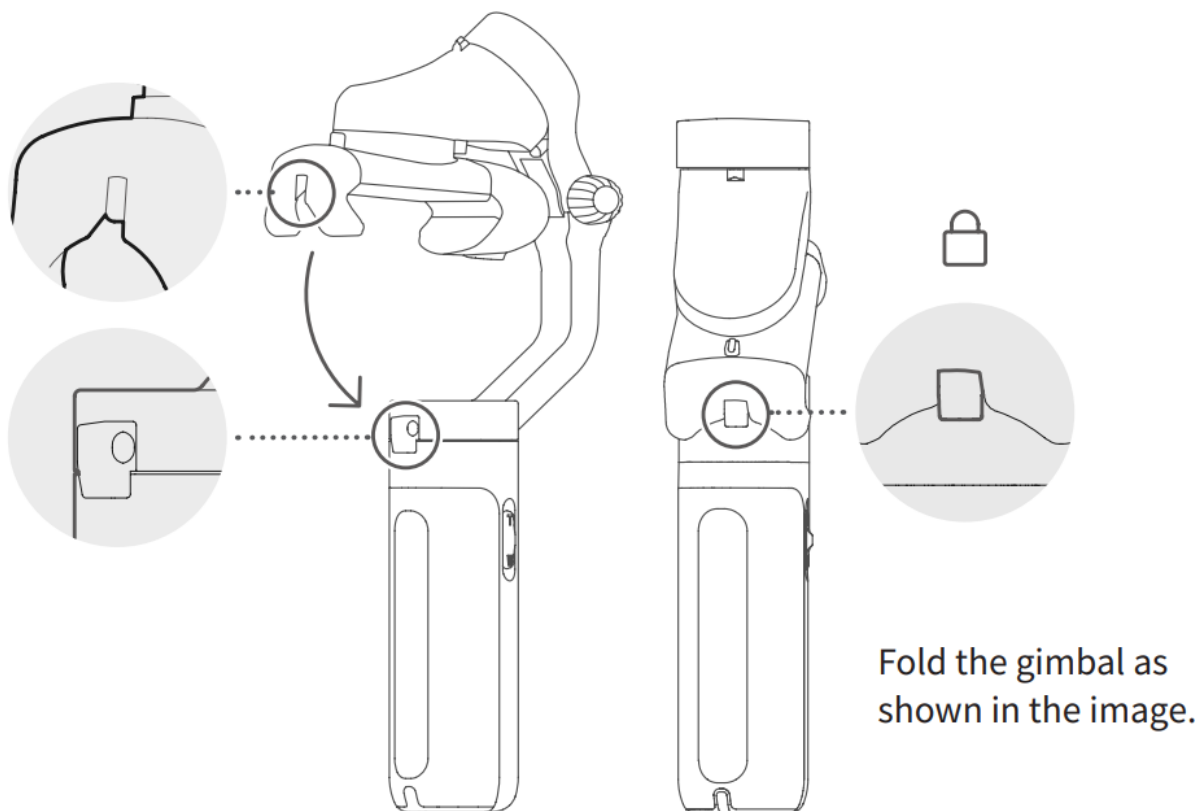
To change the following speed, please launch the Hohem Joy App – Start Recording – Gimbal Parameter Settings (Bluetooth connection is necessary.)

General	Shooting with general follow speed
Slow	To follow the slow movement
Medium	To follow the fast movement
Fast	Fast follow speed for video transition

General Shooting with general follow speed

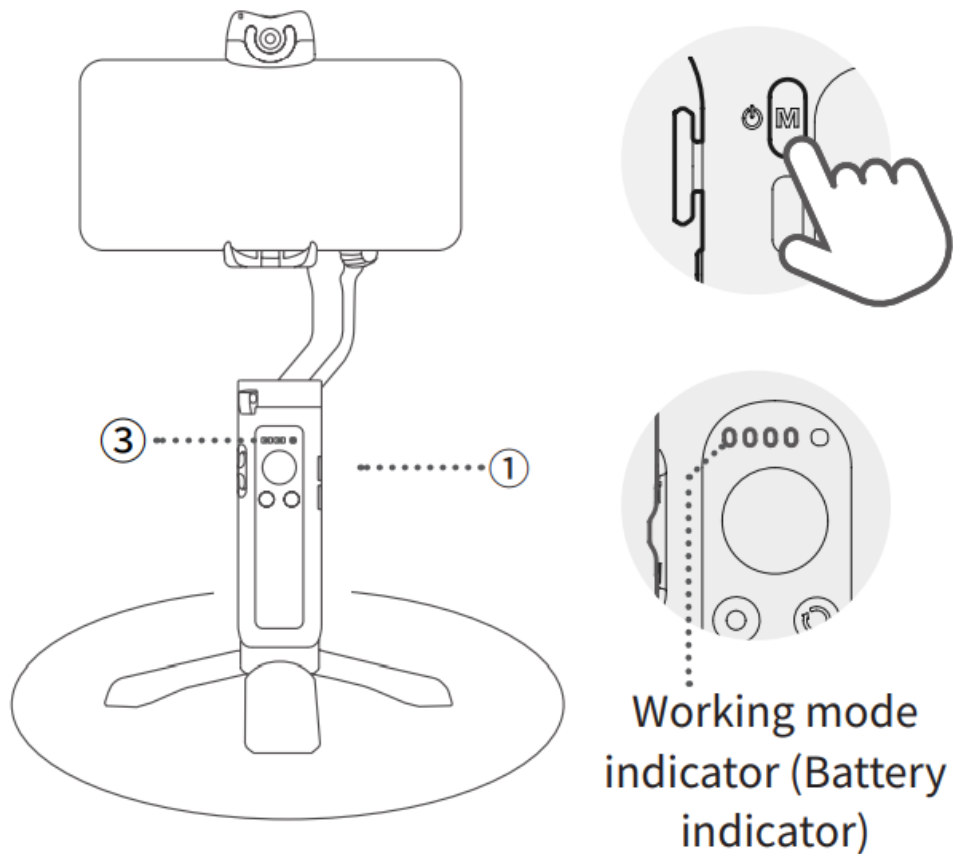
- Slow To follow the slow movement
- Medium To follow the fast movement
- Fast Fast follow speed for video transition

How to fold iSteady V2S?



How to calibrate iSteady V2S?

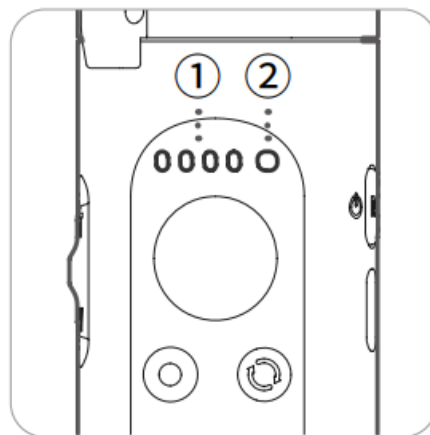
If the gimbal is not level after turning on, or the pan axis has a slight drift when the gimbal is still, please calibrate it.



Calibrate the gimbal on a flat surface and keep it stationary

1. Turn on the gimbal and press the function button five times.
2. Start calibration after a sound.
3. Alternating flashes of the first two battery lights and the last two battery lights.
4. The calibration is done after two beeps sound. The calibration takes about 40 seconds
5. Calibrate the gimbal on a flat surface and keep it stationary.

Battery Level Indicator & Bluetooth Indicator



1. Working mode indicator(Battery level indicator)

- Gimbal mode: If one of the working modes is in use, its mode light will be solid green.
- Battery level: Long-pressing
- Function Button to check out the battery level.

- Charging status: Light flashing means the gimbal is in charge, and Light staying on means the gimbal is fully charged.
- Others: Continuous flashing when calibrating the gimbal.

2. Bluetooth indicator

- Gimbal status
- Light off: Bluetooth disconnected
- Green: Bluetooth connected
- Pulse red: Low battery warning
- Blink red quickly: Low-battery shutdown countdown
- Solid red: Error warning
- Flashing red with a beep sound:
- Overloading
- Remote control* status
- Blink yellow and green alternatively: Pairing
- Blink yellow: Paired
- The remote control is sold separately.

Download Hohem Joy App

To Find More Many Functions



Scan the QR code or search “Hohem Joy” in the App Store or Google Play to download.
The App Hohem Joy requires iOS 10.0 or later, and Android 6.0 or later.

Gimbal Specifications

Product Name	iSteady V2S Foldable 3-Axis AI Tracking Smartphone Gimbal
Product Model	iSV2S
Weight	263g
Folded Size	179 X 79 X 39 mm
Battery Capacity	18650li-ion 2800mAh
Battery Life	9 hours 4 hours (with AI vision sensor) 2 hours (with AI vision sensor & LED video light)
Mechanical Range	Pan: 320° Roll: 320° Tilt: 320°
Controllable Range	Pan: 320° Tilt: -45° ~+45°
Compatible Phones	Weight: ≤ 280g Thickness: ≤ 11mm Width: 55mm~90mm

The motor would be shown on the screen due to some mobile cameras are designed in the middle of the phone, such as the Xiaomi Mi 10, Xiaomi Mi 10 Pro, and Xiaomi Mi CC9 PRO.

Warranty Terms

1. Customers are entitled to replacement service in case of quality deficits or functional disorders found in the product within 7 days of the purchase date. Ensure the commodity and package with no damage, and we will offer a brand-new replacement after confirming the product's problem is not related to artificial damage.
2. The warranty service is subject to normal use.
3. The valid warranty period is 12 months counting from the date of selling under normal use. Accessories are excluded from the warranty service.
4. This warranty service DOES NOT cover accidental or artificial damages (including but not limited to) caused by unauthorized modification, disassembly, incorrect use and operation.
5. Please keep and offer the warranty card for claiming the warranty service.

CALL CENTER -Toll-Free

UNITED STATES: +1(888)9658512 Mon-Fri: 9:00AM-5:00PM(EST)

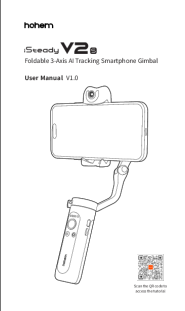
UNITED KINGDOM: +44(0)808 2737578 Mon-Fri: 2:00PM-10:00PM(GMT +0)

CANADA: +1(855)758-8939 Mon-Fri: 9:00AM-5:00PM(EST)


Warranty Card

- User Name
 - Contact No.
 - Address
 - Purchase Date
 - Prod. Serial No.
 - Failure Cause
 - Service Record
-

Documents / Resources

	<p>hohem V2S iSteady V2S Smartphone Gimbal with AI Sensor [pdf] User Manual V2S iSteady V2S Smartphone Gimbal with AI Sensor, V2S, iSteady V2S Smartphone Gimbal with AI Sensor, Smartphone Gimbal with AI Sensor, Gimbal with AI Sensor, AI Sensor</p>
--	---

References

-  [Hohem - Official Website - Gimbal, Gimbal Stabilizer, Phone Gimbal, Gimbal for iphone, 3 axis gimbal, Hohem, iSteady V2, AI Sensor, AI Gimbal, Tracking](#)
- [User Manual](#)

Manuals+ Privacy Policy

This website is an independent publication and is neither affiliated with nor endorsed by any of the trademark owners. The "Bluetooth®" word mark and logos are registered trademarks owned by Bluetooth SIG, Inc. The "Wi-Fi®" word mark and logos are registered trademarks owned by the Wi-Fi Alliance. Any use of these marks on this website does not imply any affiliation with or endorsement.