

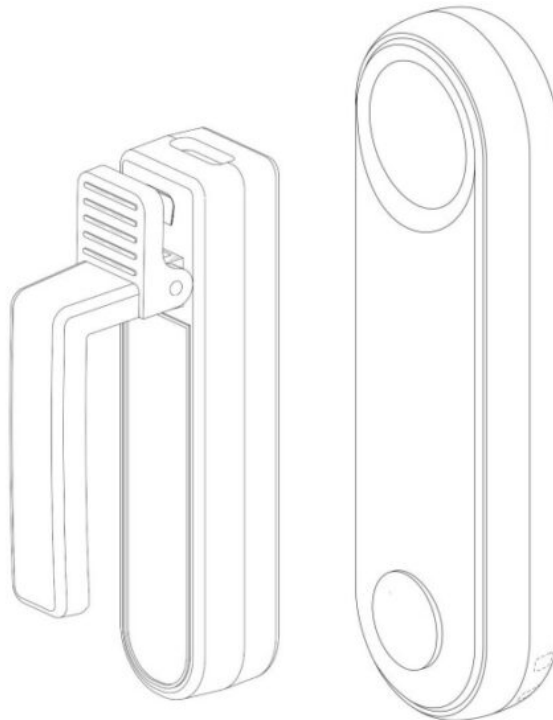


HOGANCE RCPT08 RF Remote Page Turner User Manual

[Home](#) » [HOGANCE](#) » HOGANCE RCPT08 RF Remote Page Turner User Manual 

HOGANCE

RF REMOTE PAGE TURNER
USER MANUAL



Model number: RCPT08
New ways of reading change your life!

Contents

- 1 **PRODUCT DESCRIPTION:**
- 2 **PRODUCT FEATURES:**
- 3 **PRODUCT COMPONENTS:**
- 4 **HOW TO USE:**
- 5 **TROUBLESHOOTING METHODS:**
- 6 **Q&A**
- 7 **FCC Statement**
- 8 **Documents / Resources**
 - 8.1 **References**

PRODUCT DESCRIPTION:

Thank you for purchasing this Page-turner controller. We developed this page turner controller mainly to make it be a easier way for you to read E-books.

This product is suitable for various e-readers (Kindles, Kobo, Mobile Phones, Tablets).

Please Kindly notice that the following Models are not compatible: Older Kindles, Kindle 7/8. Amazon Fire HD 10 (10th/11th generation

PRODUCT FEATURES:

1. Using RF wireless signals. Remote signal can reach all directions and any position.
2. Built-in battery can be recharged for use.
3. Built-in Intelligent hibernation system to ensure long standby time.
4. Usage time 48 hours. If you read for 2 hours a day, the will last 15 days on a single charge.
5. The product is compact and highly practical.
6. Low battery warning – (Clip) A flashing red indicator means the battery is low and needs to be recharged.

PRODUCT COMPONENTS:

1. Remote control X1
2. Clip the X1
3. Type-c charging cable X2

HOW TO USE:

1. Simply hold the receiver's button for 3 seconds until the red light stays on.
2. Then press the remote's page-turn button. A swift blue flash on the receiver signals a successful pairing.
3. Attach it onto your device's screen, and enjoy the freedom of wireless page navigation at your fingertips.

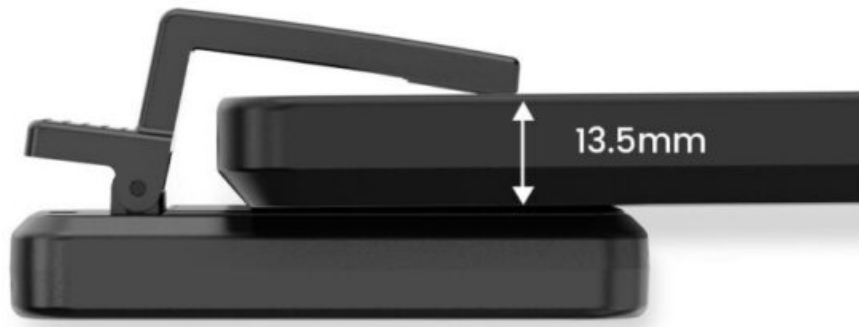
NOTE When the remote control has no operation within 30 minutes, the clip will automatically enter the hibernation energy saving standby mode.

Clip built-in intelligent sleep system, please press the button to activate before each use.

Next, clip the clip to the edge of the screen reading area to use.

TROUBLESHOOTING METHODS:

1. The total thickness of e-reader and cover can't exceed 13.5mm or 0.54 in; otherwise,remove the case to using.



2. When pressing the clip key, led no light, or red light is flashing, please charge it up before using it.
3. Input voltage is USB 5.0V. Phone chargers can be used.
4. Clips Indicator light flashes red when charging and goes out when fully charged. Remote control view LCD screen power percentage.
5. Ensure the clip trigger point touches to the screen during using. Ensure that the silicone pad effectively touch the screen. The function of the silicone touch on top of the clip is; (instead of a finger touching the screen) So the silicone contacts must touch the screen.



6. In the case of all green lights, please re-match the signal if the remote control cannot control the clip.
7. Please try the following operations when the e-reader can't turning pages
 1. Try more position and direction on the screen to find a suitable point to trigger.
 2. Clip the active clip to the screen. off the e-reader screen and on it again.
 3. Clip the clip to a certain number of the mobile calculator APP to test whether it works or not. If not, please send a message to contact us : Find your {Order ID} → Contact Seller.

1 YEAR WARRANTY:

We provide you with 1 year warranty and permanent US technical support.

This means that if anything goes wrong with the unit (other than accidenta damage) within the first year of ownership, we will replace the unit for fee, 100% at our cost.

Contact us at Find your {Order ID} → Contact Seller.

WARNING:

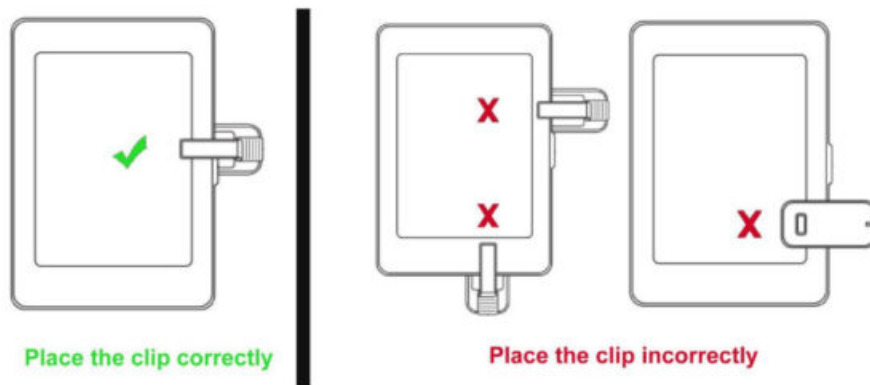
1. After long- term storage, please charge the product before using it.
2. Non-waterproof, please don't use in extremely cold, hot, humid environment.
3. Do not use the receiver sensor clip roughly to avoid breaking them.

Q&A

Q1: What should do if it doesn't work?

A1: Make sure the silicone pad on top of the receiver sensor clip is clean and touching the screen effectively.

Please see the following picture to show.



A2: Make sure the RF remote controller and receiver sensor clip are powered.

A3: Make sure the pairing is successful.

A4: Re-pair. Place the receiver sensor clip on the screen in a suitable position first, and then re-pair it.

Q2: What should do if the receiver sensor clip blocks the words?

A1: Adjust the position of the transmitter.

A2: Adjust the margins of the screen.

Q3: Can it be used to scroll on TikTok?

A: No, it can't scroll on TikTok.

Q4: Does it have to remove the kindle case before using the product?

A: Please kindly notice that while with a case on the kindle, the whole max thickness cannot exceed 13.5mm, if the thickness is over 13.5mm, the case need to be removed before using the page turner.

Q5: Support PDF file reading?

A: NO Support

FCC Statement

This equipment has been tested and found to comply with the limits for a Class B digital device, pursuant to part 15 of the FCC Rules. These limits are designed to provide reasonable protection against harmful interference in a residential installation. This equipment generates, uses and can radiate radio frequency energy and, if not installed and used in accordance with the instructions, may cause harmful interference to radio communications. However, there is no guarantee that interference will not occur in a particular installation. If this equipment does cause harmful interference to radio or television reception, which can be determined by turning the equipment off and on, the user is encouraged to try to correct the interference by one or more of the following measures:

- Reorient or relocate the receiving antenna.
- Increase the separation between the equipment and receiver.
- Connect the equipment into an outlet on a circuit different from that to which the receiver is connected.
- Consult the dealer or an experienced radio/TV technician for help.

Caution: Any changes or modifications to this device not explicitly approved by manufacturer could void your authority to operate this equipment.


This device complies with part 15 of the FCC Rules. Operation is subject to the following two conditions: (1) This device may not cause harmful interference, and (2) this device must accept any interference received, including interference that may cause undesired operation.

RF Exposure Information

The device has been evaluated to meet general RF exposure requirement.

The device can be used in portable exposure condition, compliance with exposure requirements.

HOGANCE

	<p>HOGANCE RCPT08 RF Remote Page Turner [pdf] User Manual</p> <p>RCPT08, RCPT08 RF Remote Page Turner, RF Remote Page Turner, Remote Page Turner, Page Turner, Turner</p>
---	---

References

- [User Manual](#)

Manuals+. [Privacy Policy](#)

This website is an independent publication and is neither affiliated with nor endorsed by any of the trademark owners. The "Bluetooth®" word mark and logos are registered trademarks owned by Bluetooth SIG, Inc. The "Wi-Fi®" word mark and logos are registered trademarks owned by the Wi-Fi Alliance. Any use of these marks on this website does not imply any affiliation with or endorsement.