



HOFFMAN AST44 Enclosure Pedestal Columns Instruction Manual

[Home](#) » [Hoffman](#) » HOFFMAN AST44 Enclosure Pedestal Columns Instruction Manual 

Contents

- [1 HOFFMAN AST44 Enclosure Pedestal Columns](#)
- [2 Product Information](#)
- [3 Product Usage Instructions](#)
- [4 Installation Instructions](#)
- [5 4x4 Mounting patterns](#)
- [6 Documents / Resources](#)
 - [6.1 References](#)
- [7 Related Posts](#)

HOFFMAN

HOFFMAN AST44 Enclosure Pedestal Columns



Product Information

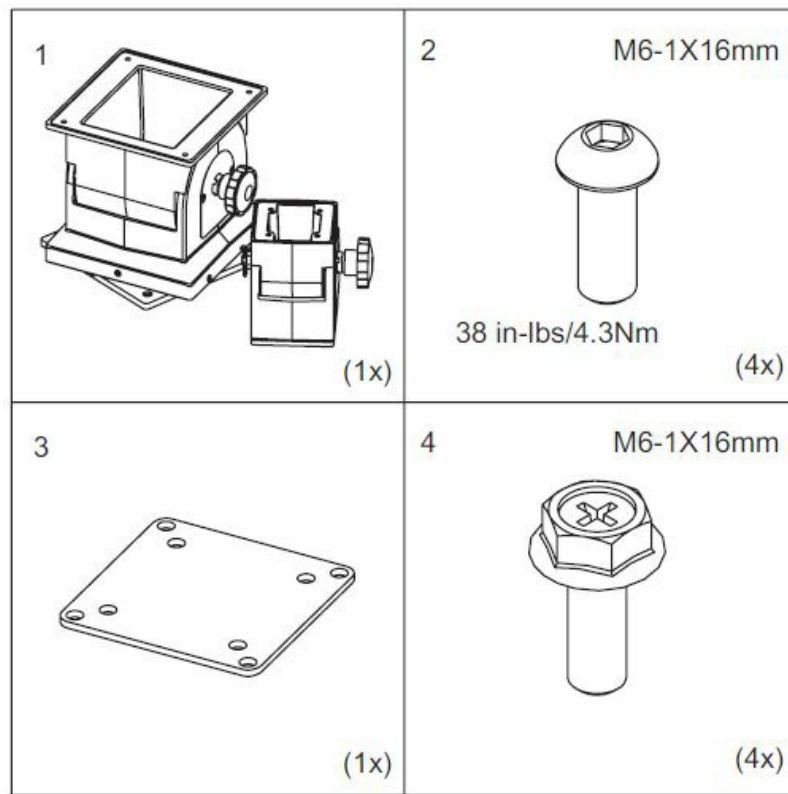
- Product Name: AST44 AST88
- Revision: E
- Part Number: 35356001
- Model Number: 87567886

Product Usage Instructions

1. Connect the product to a power source.
2. Ensure that the product is securely placed on a stable surface.
3. Read and understand the safety precautions mentioned in the user manual before operating the product.
4. To turn on the product, use the power button located on the front panel.
5. Follow the on-screen instructions to set up the product.
6. Refer to the user manual for detailed instructions on using the product features and functions.
7. If you encounter any issues or need assistance, refer to the troubleshooting section in the user manual or contact our customer support.

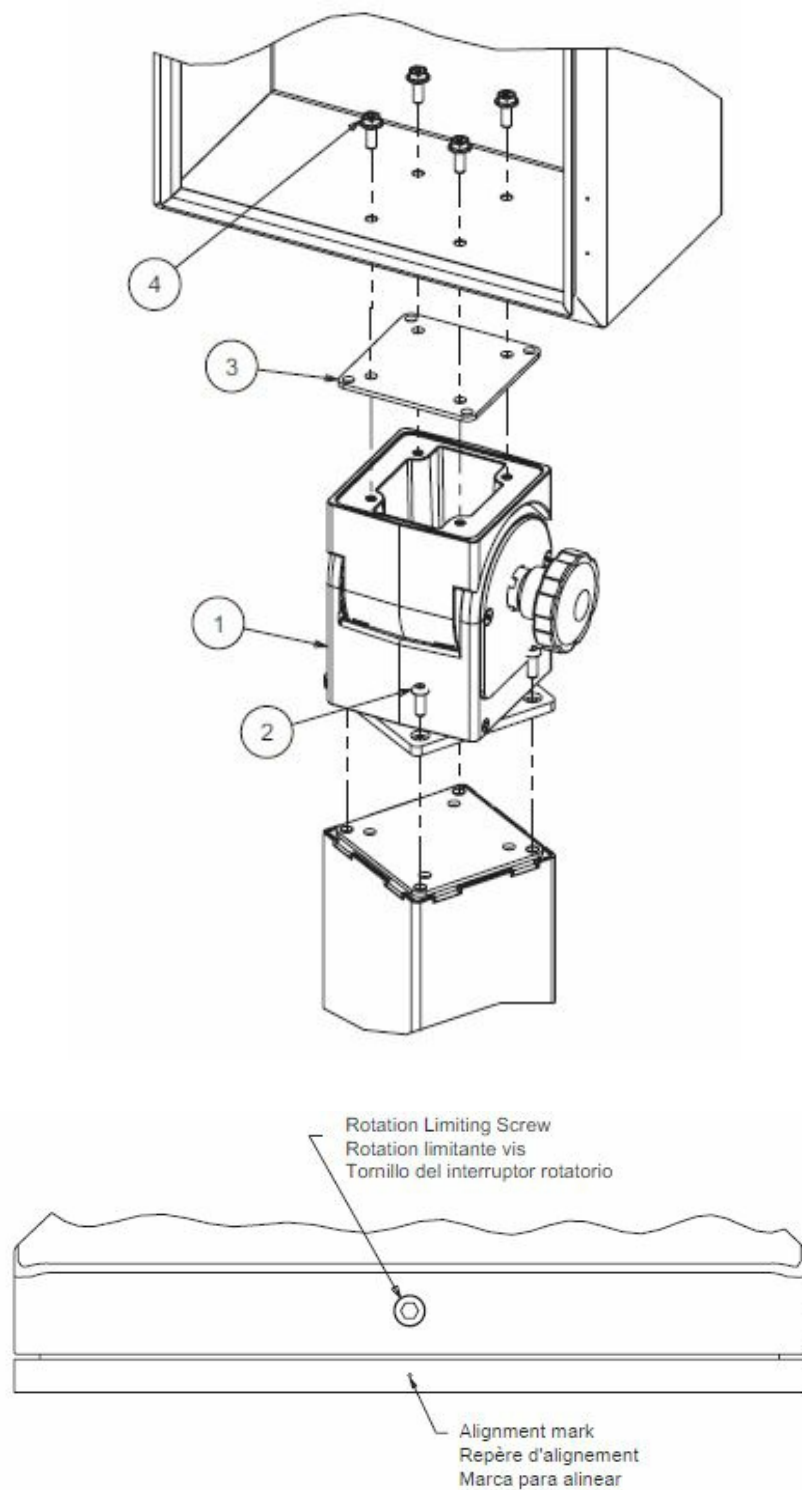
WARNING: To avoid serious product damage or personal injury, do not use this device in an overhead suspension application.

Installation Instructions

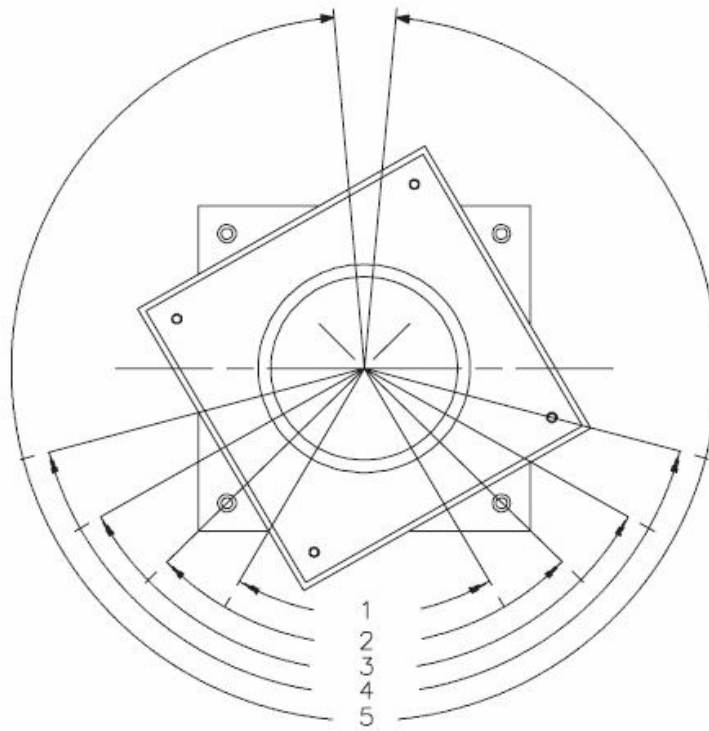


NOTE

- Enclosure stiffening brackets may be required in some applications.
- Contact your local Hoffman Sales Representative for more information.
- Tilt Knob: The tilt locking knob must be secured before attempting to adjust the tilt tension.
- Failure to do so may result in the unit moving unexpectedly.
- Torque: Min: 10 in-lbs/1.1 Nm
- Max: 240 in-lbs/26.7 Nm



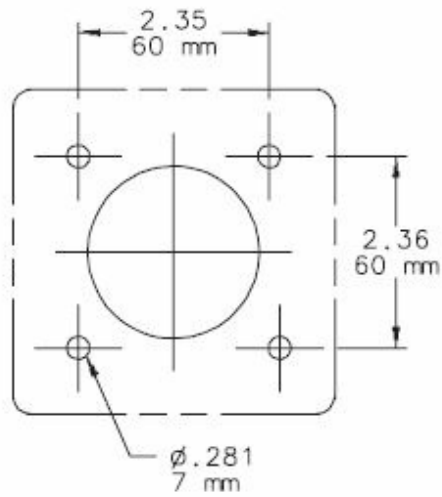
- With rotation limiting screw and the mark on the base aligned, turn the limiting screw clockwise until it bottoms.
- Turn the limiting screw back counter-clockwise the number of turns associated with the desired rotation shown on page 4.
- If the rotation limiting screw is removed, the rotation is limited to 350°



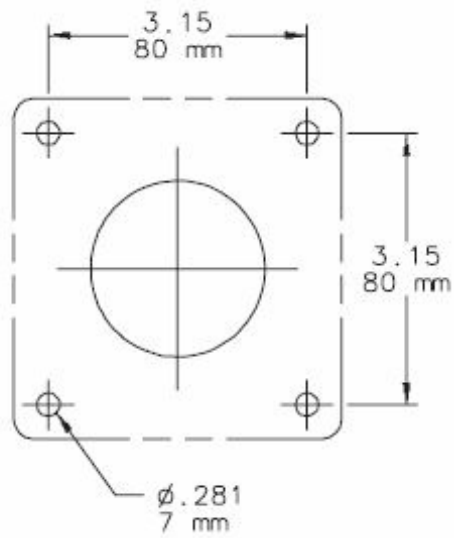
ANGLE	DEGREES/TURNS
1	60° bottom
2	90° 1.5 turns (counter-clockwise)
3	120° 3 turns (counter-clockwise)
4	150° 4.5 turns (counter-clockwise)
5	350° 7.5 turns (counter-clockwise)

4×4 Mounting patterns

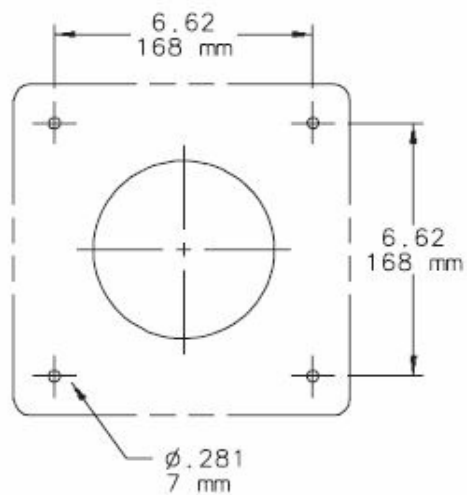
- Top Pattern




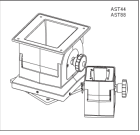
- Bottom Pattern



- 8×8 Mounting patterns



© 2018 Hoffman Enclosures Inc.
 PH 763 422 2211
nVent.com/HOFFMAN P/N
 35356001 87567886

 	<p>HOFFMAN AST44 Enclosure Pedestal Columns [pdf] Instruction Manual</p> <p>AST44, AST88, AST44 Enclosure Pedestal Columns, AST44, Enclosure Pedestal Columns, Pedestal Columns, Columns</p>
---	--

References

- 
[We connect and protect | nVent](#)