



HOERMANN EB073-A Sliding Door Set Running in Front of the Wall without Frame Instruction Manual

[Home](#) » [HOERMANN](#) » HOERMANN EB073-A Sliding Door Set Running in Front of the Wall without Frame Instruction Manual 

Contents

- [1 HOERMANN EB073-A Sliding Door Set Running in Front of the Wall without Frame](#)
- [2 Product Information](#)
- [3 Product Usage Instructions](#)
- [4 About these instructions](#)
- [5 LOCATION](#)
- [6 DIMENSIONS](#)
- [7 INSTALLATION INSTRUCTIONS](#)
- [8 Basic principles](#)
- [9 Fitting](#)
 - [9.1 Sliding door set running in front of the wall](#)
- [10 Fitting by qualified personnel and warranty](#)
- [11 Care and maintenance](#)
- [12 Documents / Resources](#)

The logo consists of the word "HOERMANN" in a bold, sans-serif font. The letters are white and set against a solid blue rectangular background.

HOERMANN EB073-A Sliding Door Set Running in Front of the Wall without Frame



Product Information

- This product is a sliding door set that runs in front of the wall without a frame.
- The product can be fitted by qualified personnel.
- It is important to follow the instructions and warnings provided in the user manual to ensure proper installation and use of the product.
- The product comes with a warranty, and care and maintenance instructions should be followed to ensure the product's longevity.

Product Usage Instructions

1. Before fitting the sliding door set, ensure that you have all the necessary tools required for installation as specified in the user manual.
2. Follow the instructions provided in the user manual for fitting the sliding door set running in front of the wall without a frame.
3. Check the fitting situation to ensure that the sliding door set is installed correctly.
4. This product should only be fitted by qualified personnel to ensure proper installation.
5. After installation, follow the care and maintenance instructions provided in the user manual to ensure proper functioning of the product and its longevity.

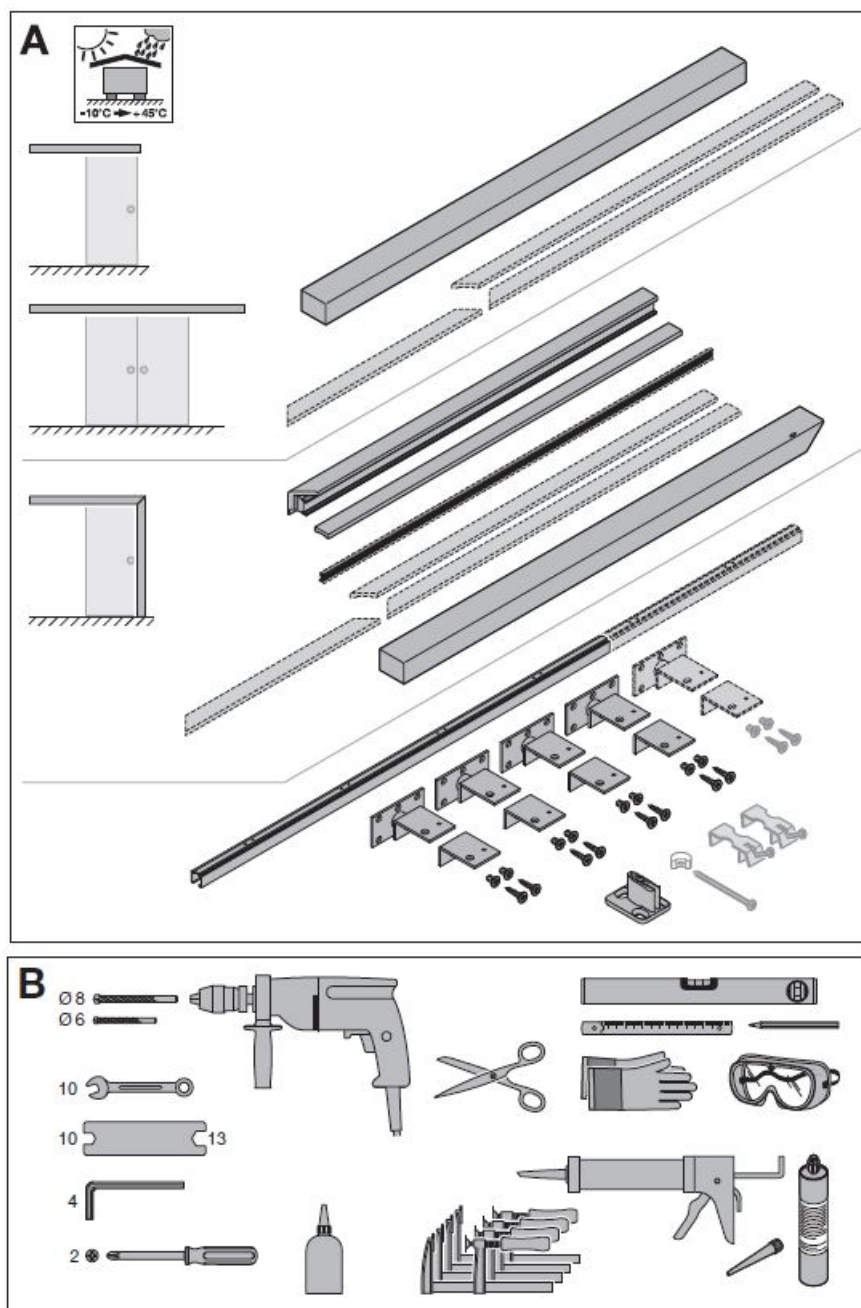
Dissemination as well as duplication of this document and the use and communication of its content are prohibited unless explicitly permitted. Noncompliance will result in damage compensation obligations. All rights reserved in the event of patent, utility model or design model registration. Subject to changes.

Dear Customer, We are delighted that you have chosen a quality product from our company.

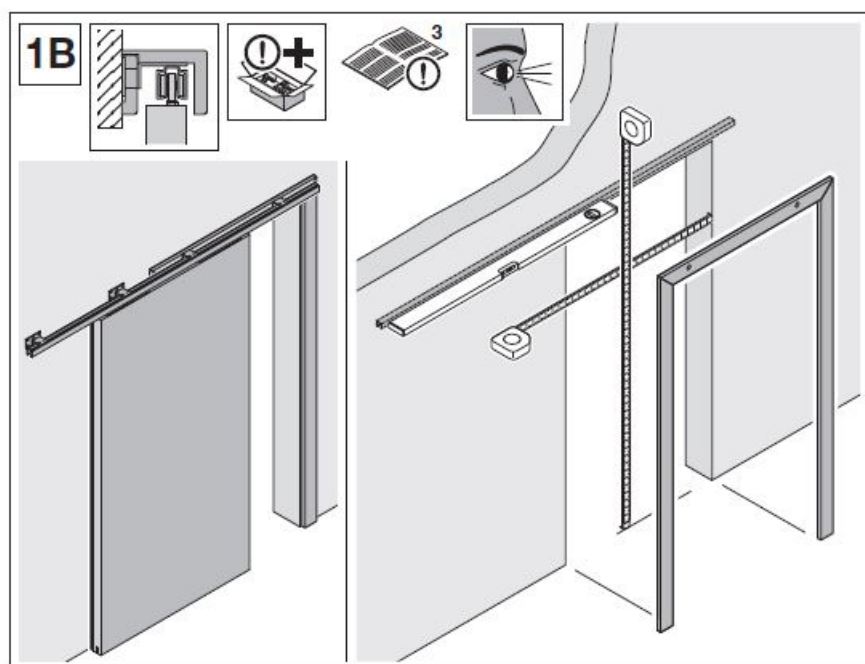
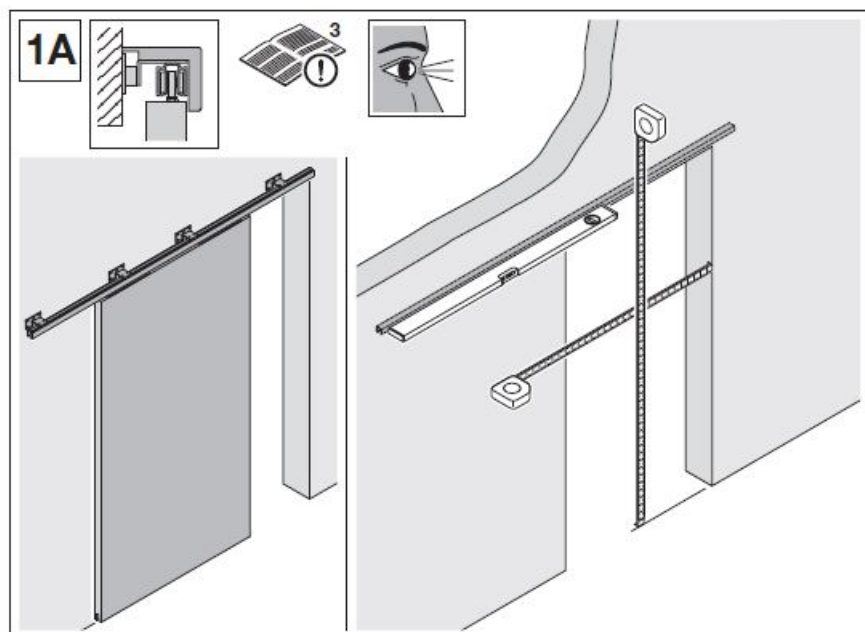
About these instructions

Read through all of the instructions carefully: they contain important information about the product and fitting. Pay attention to and follow the instructions provided, particularly the safety instructions and warnings. Please keep these instructions in a safe place and make sure that they are available to all users at all times. These instructions are important documentation for the building files. Expert fitting and careful maintenance increase the performance, availability and security.

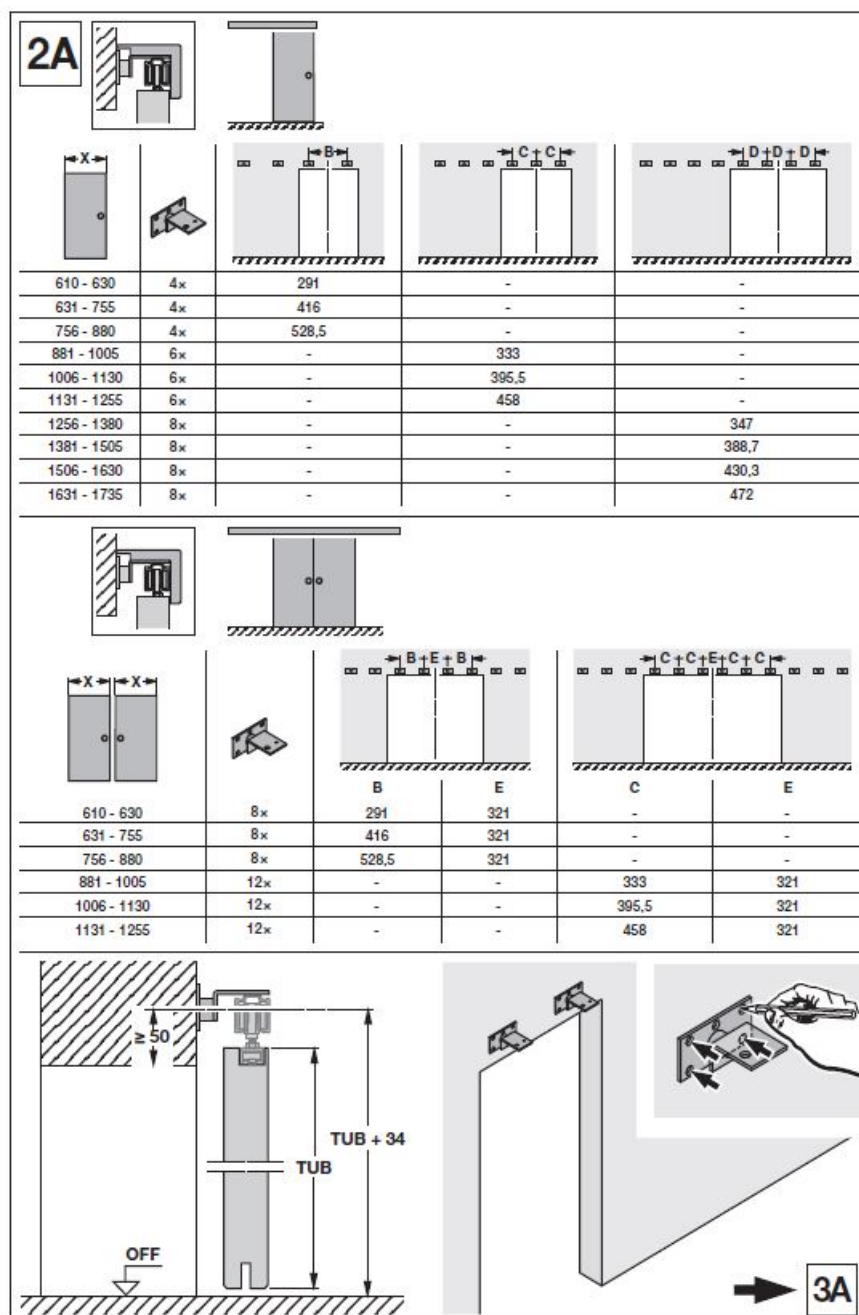
TOOLS AND PARTS



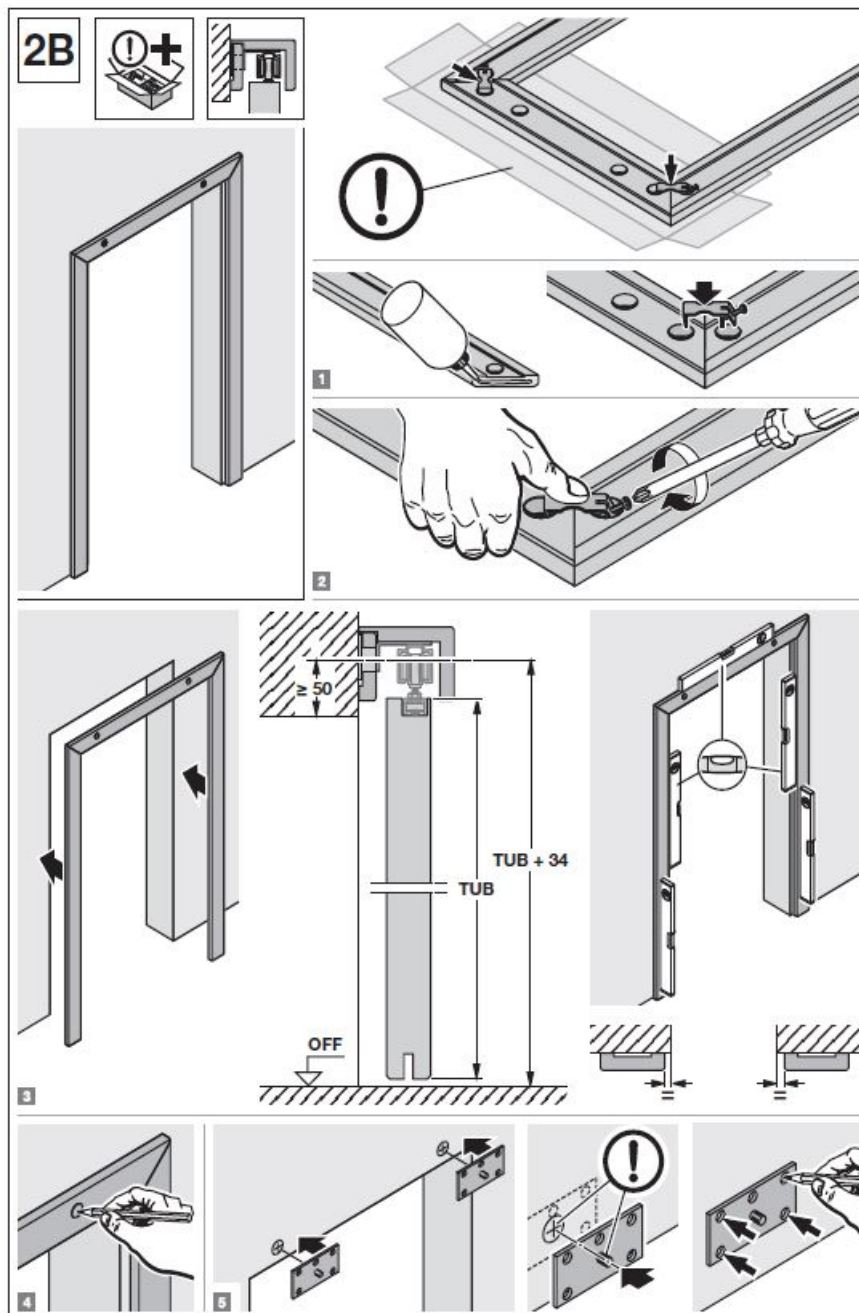
LOCATION

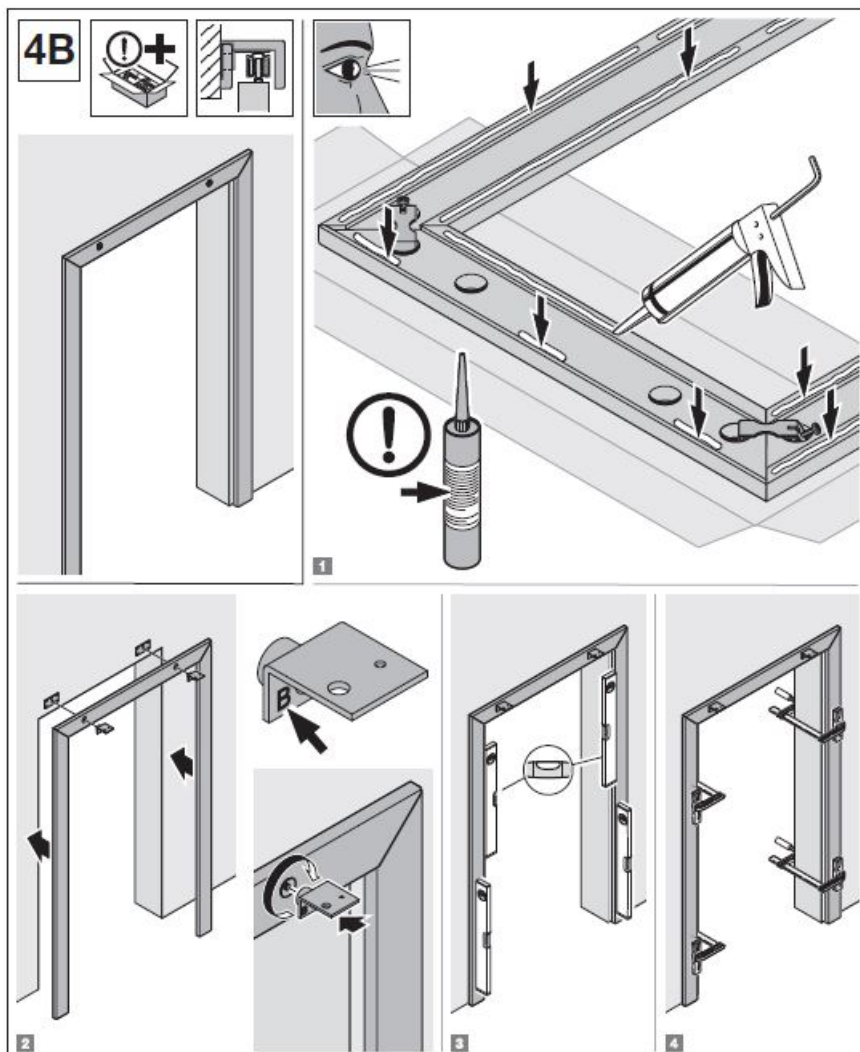
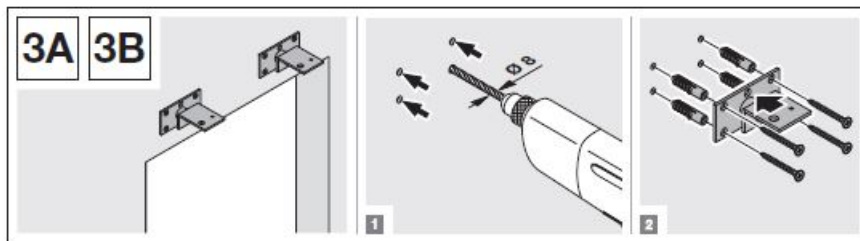


DIMENSIONS

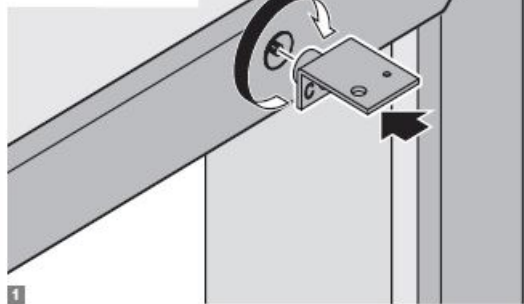
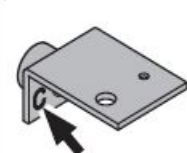
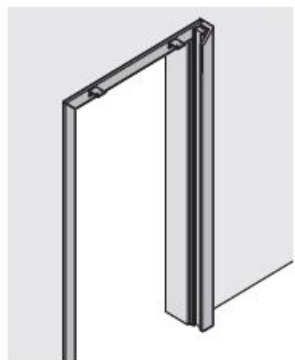
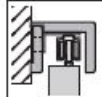


INSTALLATION INSTRUCTIONS

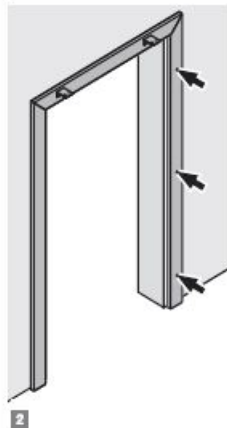




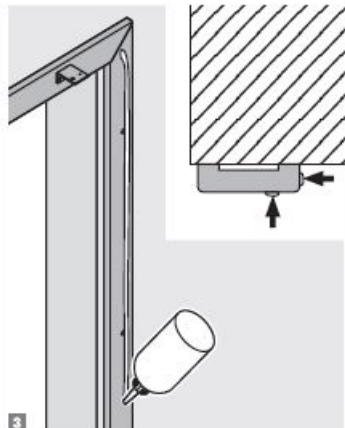
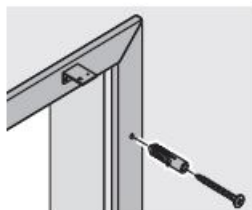
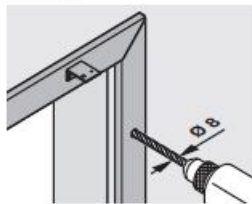
5C



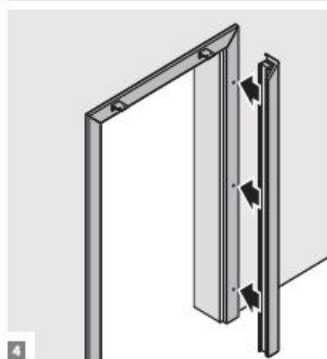
1



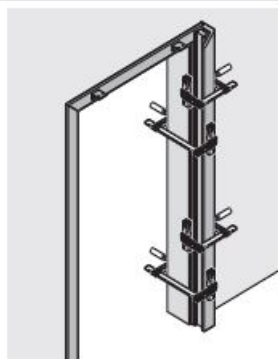
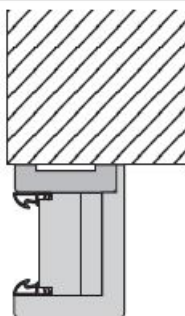
2

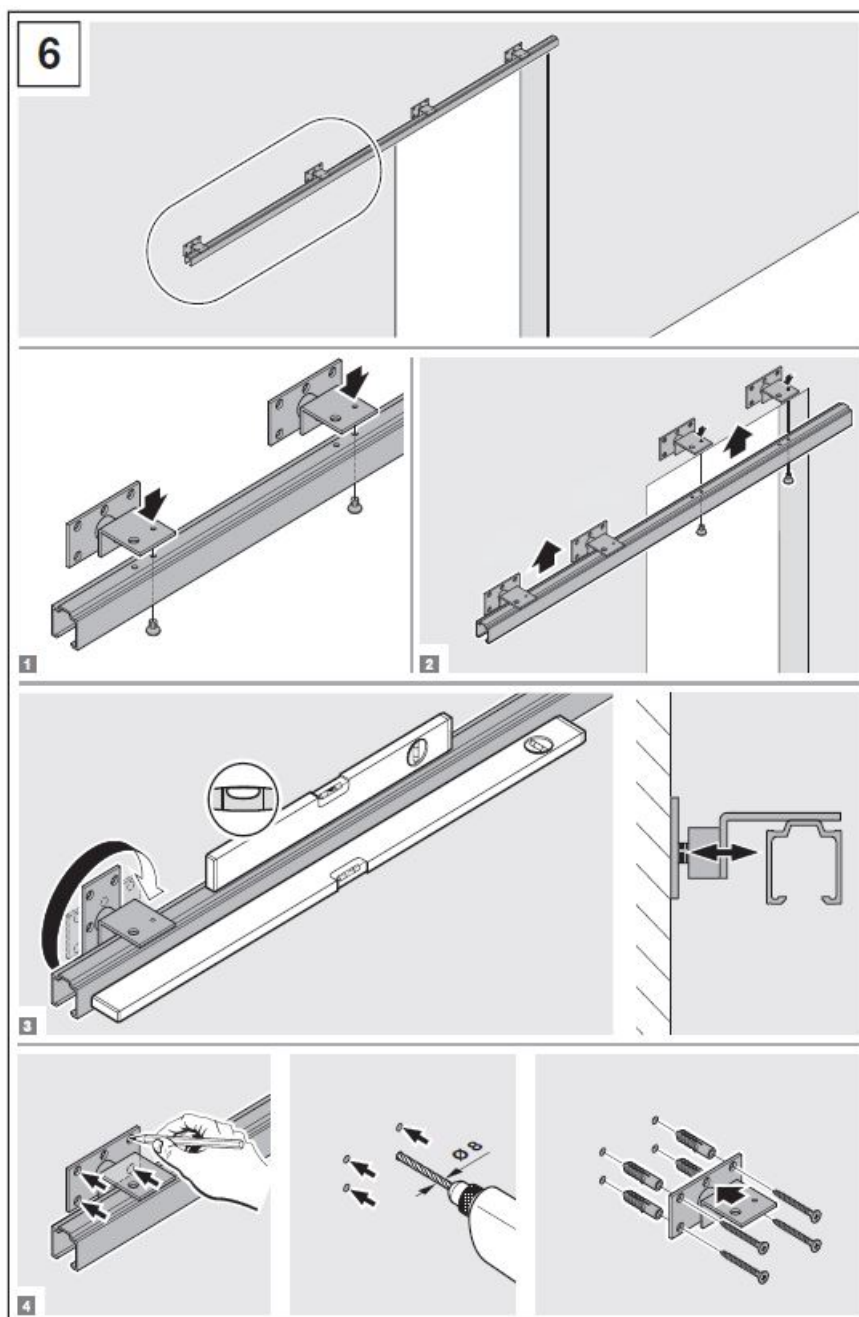


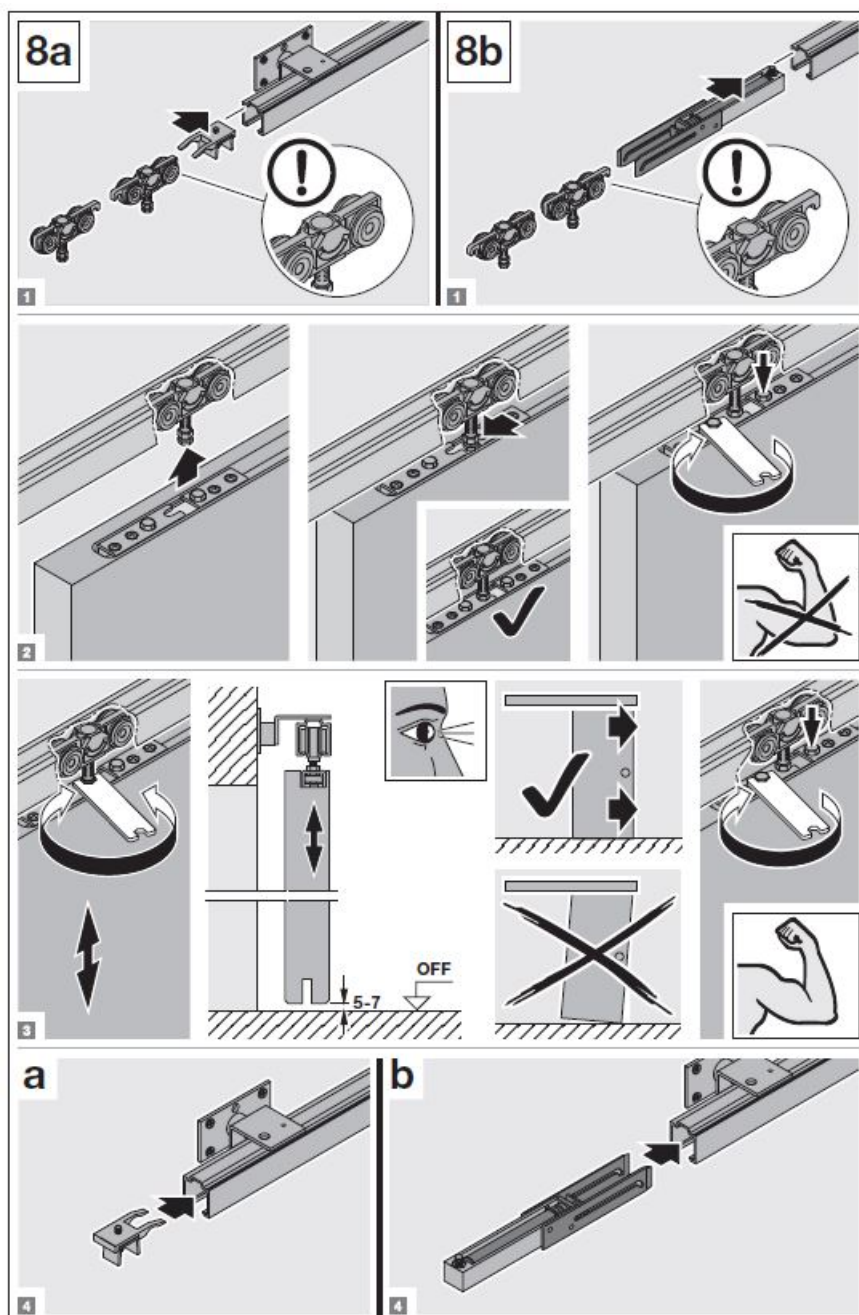
3

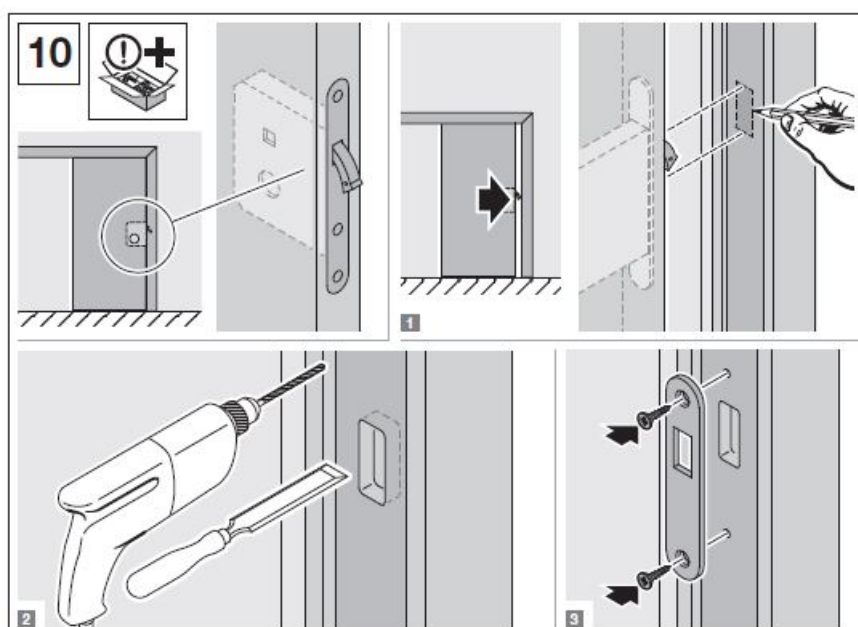
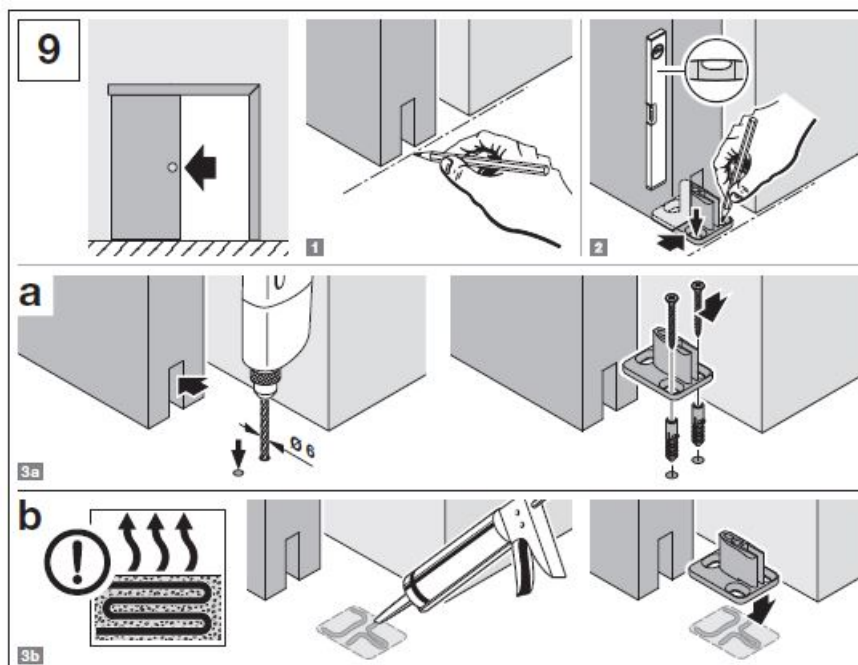


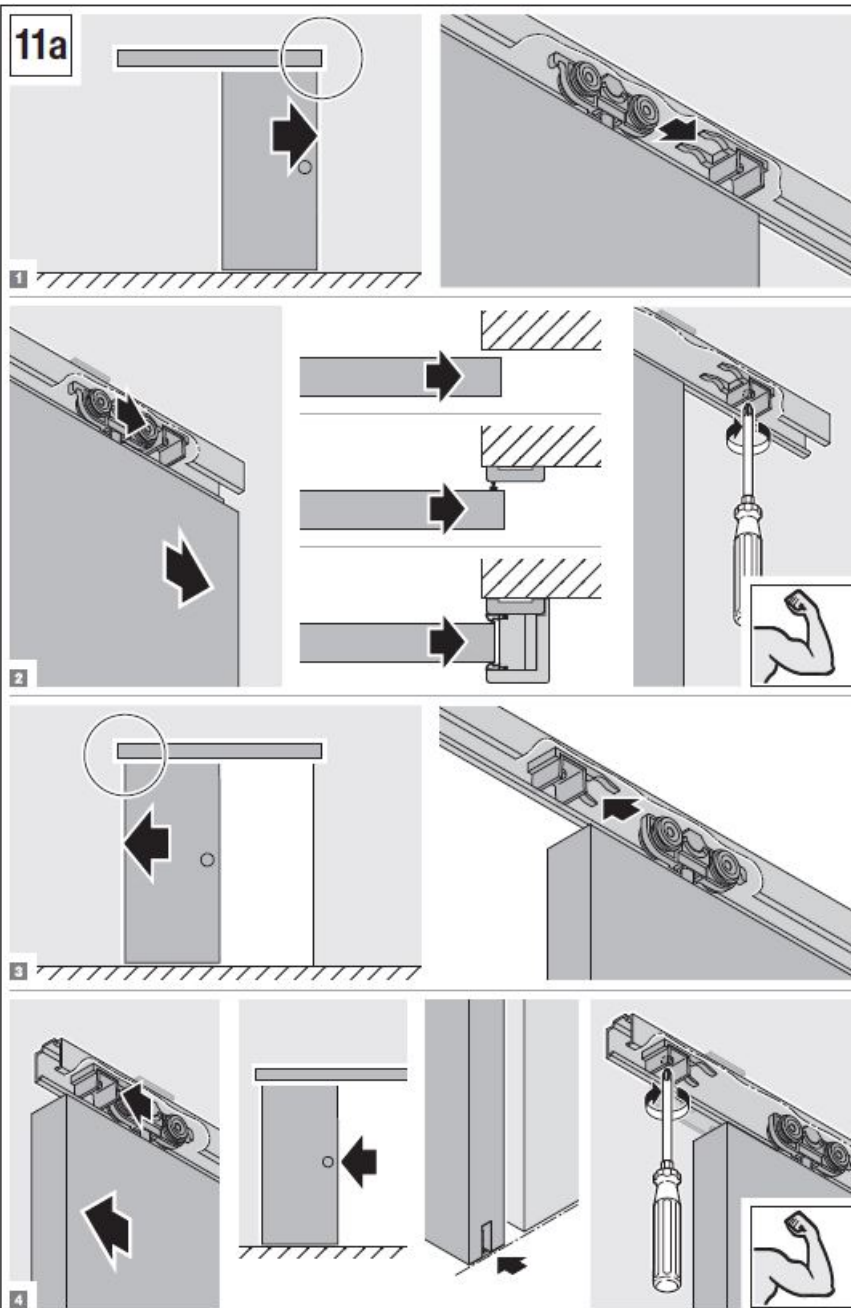
4

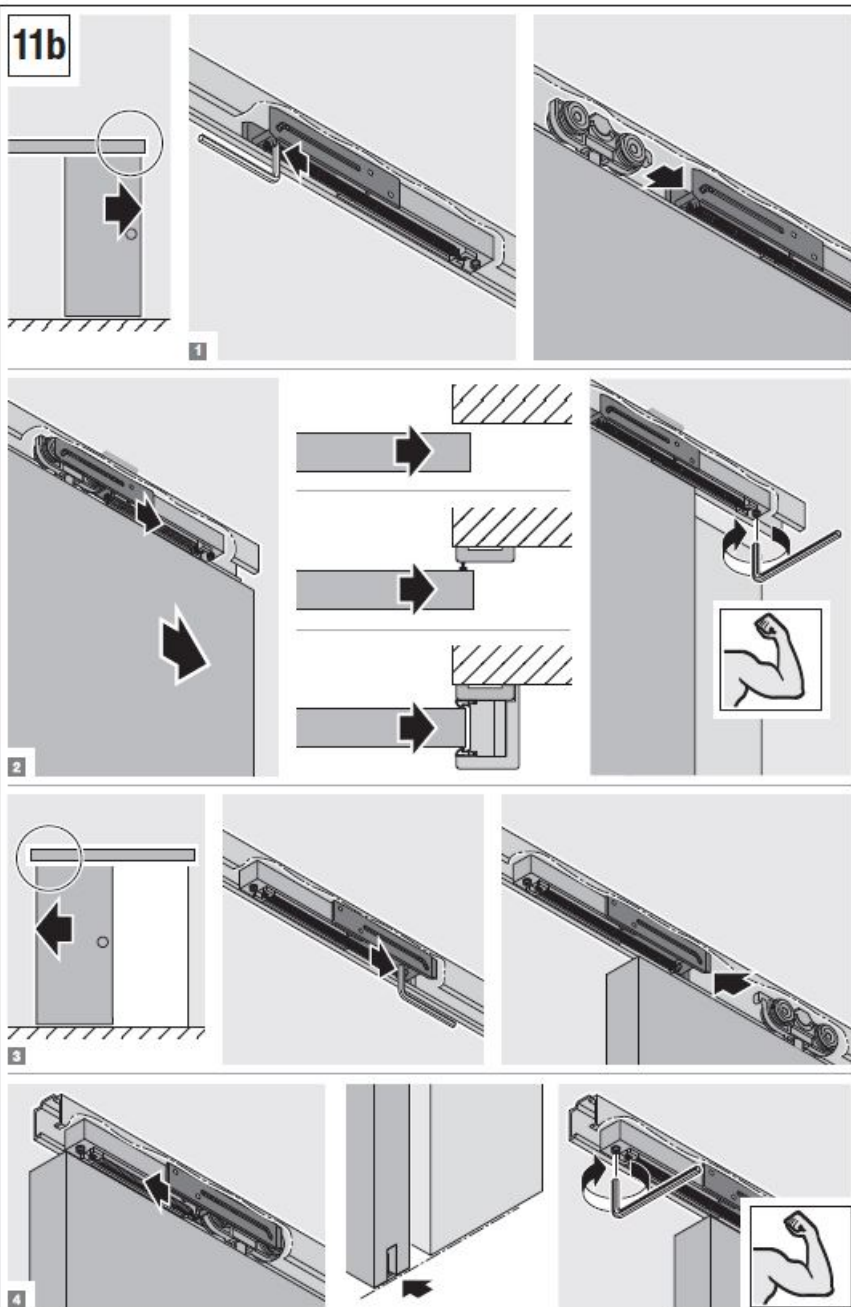


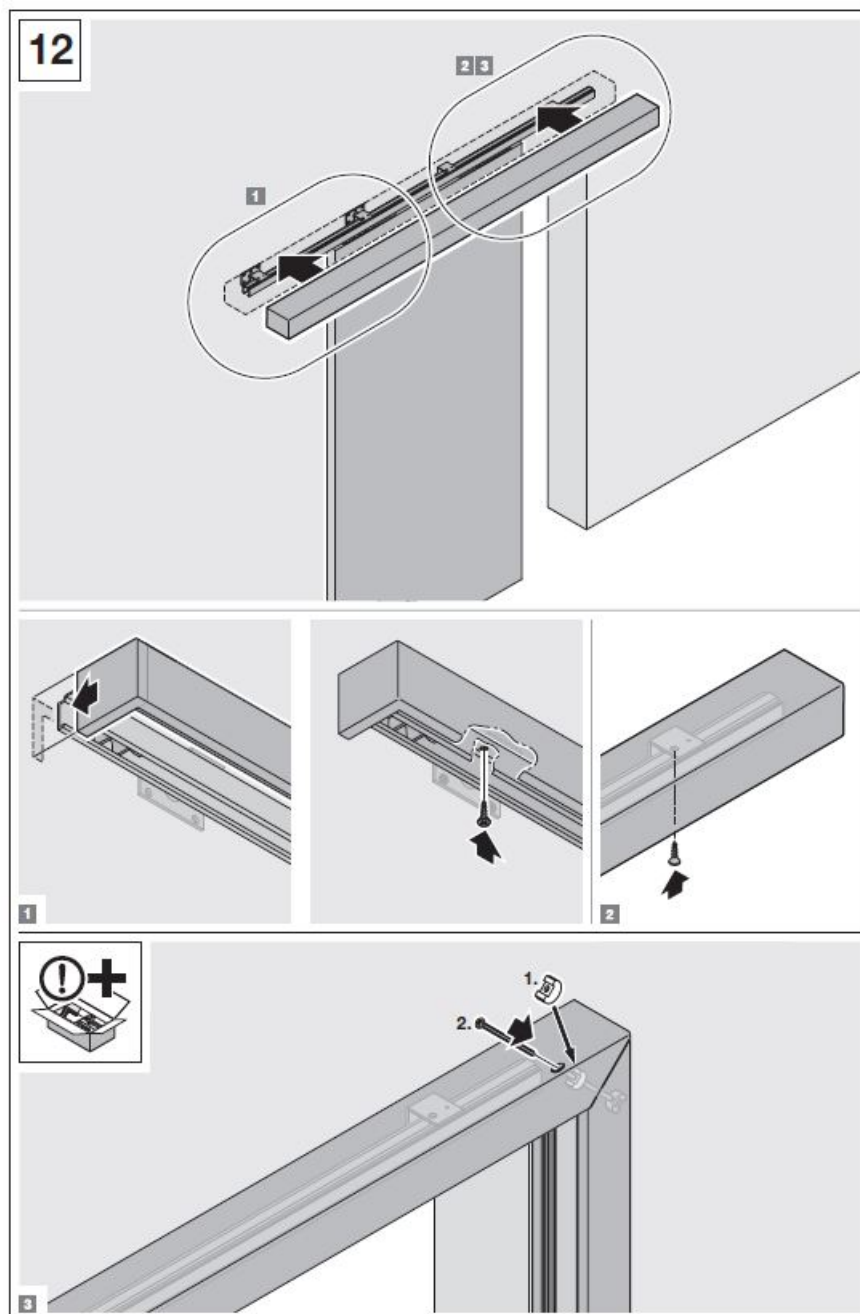












Warnings used

The general warning symbol indicates a danger that can lead to injury or death. In the text section, the general warning symbol will be used in connection with the caution levels described below. In the illustrated section, an additional instruction refers back to the explanation in the text.

ATTENTION

Indicates a danger that can lead to damage or destruction of the product

Symbols used



- Important advice to prevent injury to persons and damage to property
- Correct arrangement or activity
- Non-permissible arrangement or activity
- Protection against weather
- Indicates steps in the illustrated section that must be performed in sequence.
- Inspect
- Tighten the screws firmly
- See text section
- Optional

Abbreviations used

- OFF Finished floor level
- mm All dimensions in the illustrated section are in mm.

Basic principles

Sliding door set running in front of the wall with box and rail

1. Single-leaf system with upright threshold
2. Single-leaf system without upright threshold
3. Double-leaf system

Fitting

Sliding door set running in front of the wall

Check that the individual frame parts are free of faults and complete, check the dimensions and check that screws are tight before assembling the frame.

- Decorative edges to suit frame parts (optional)
- Fittings bag
- Sliding door box
- Sliding door rail

Note

Processed goods cannot be exchanged.

Checking fitting situation

- Suitability of the wall type
- Finished level / metre line of the floor
- Door opening sense
- Sliding door rail position

Observe building regulations.

Fitting by qualified personnel and warranty


The supplied products may only be fitted and put into operation by qualified personnel. We do not provide any warranty, as fitting is outside of our sphere of influence. These fitting instructions only provide recommendations, as there are several possibilities for professional and correct fitting. No legal claims can be derived from recommendations. Putting the door into operation is prohibited until it has been established that the door has been installed in accordance with our specifications and its function has been properly tested. A product's declaration of performance becomes invalid if an alteration to the product is carried out without consultation with us. Wood is a natural product with individual characteristics and nuances. It reacts to changes in air humidity, amongst others. The door and frame should be subjected to as few fluctuations in humidity as possible. We therefore advise against fitting in rooms with more than 60 % relative air humidity (take note of humidity in new buildings)

Care and maintenance

A slightly damp cloth, chamois or a lint-free microfibre cloth without using special detergents is enough to maintain the high-quality surfaces of doors and frames. This allows normal household dirt (e.g. fingerprints or water splashes) to be easily removed. Use lukewarm water with a squirt of washing-up liquid for stubborn dirt. Then dry off well. Do not use any abrasive or caustic solvent-based detergents! All important functional parts must be visually inspected on a regular basis (min. 1 × annually) for fastening and function. Identified defects (e.g. loose screws, damaged or missing seals, incorrectly set or stiff hinges) must be promptly addressed. Please ask your dealer for further processing, maintenance and care instructions and for certificates and verifications.

EB073-A RE / Stand: 01.2023 / Druck: 01.2023

Documents / Resources

	<p>HOERMANN EB073-A Sliding Door Set Running in Front of the Wall without Frame [pdf] Instruction Manual</p> <p>EB073-A Sliding Door Set Running in Front of the Wall without Frame, EB073-A, Sliding Door Set Running in Front of the Wall without Frame, Set Running in Front of the Wall without Frame, Front of the Wall without Frame, Wall without Frame, Frame</p>
---	---