

hoco **EQ1 5.3** **Wireless** **Connection**



HOCO EQ1 5.3 Wireless Connection Instruction Manual

[Home](#) » [hoco](#) » HOCO EQ1 5.3 Wireless Connection Instruction Manual 

Contents

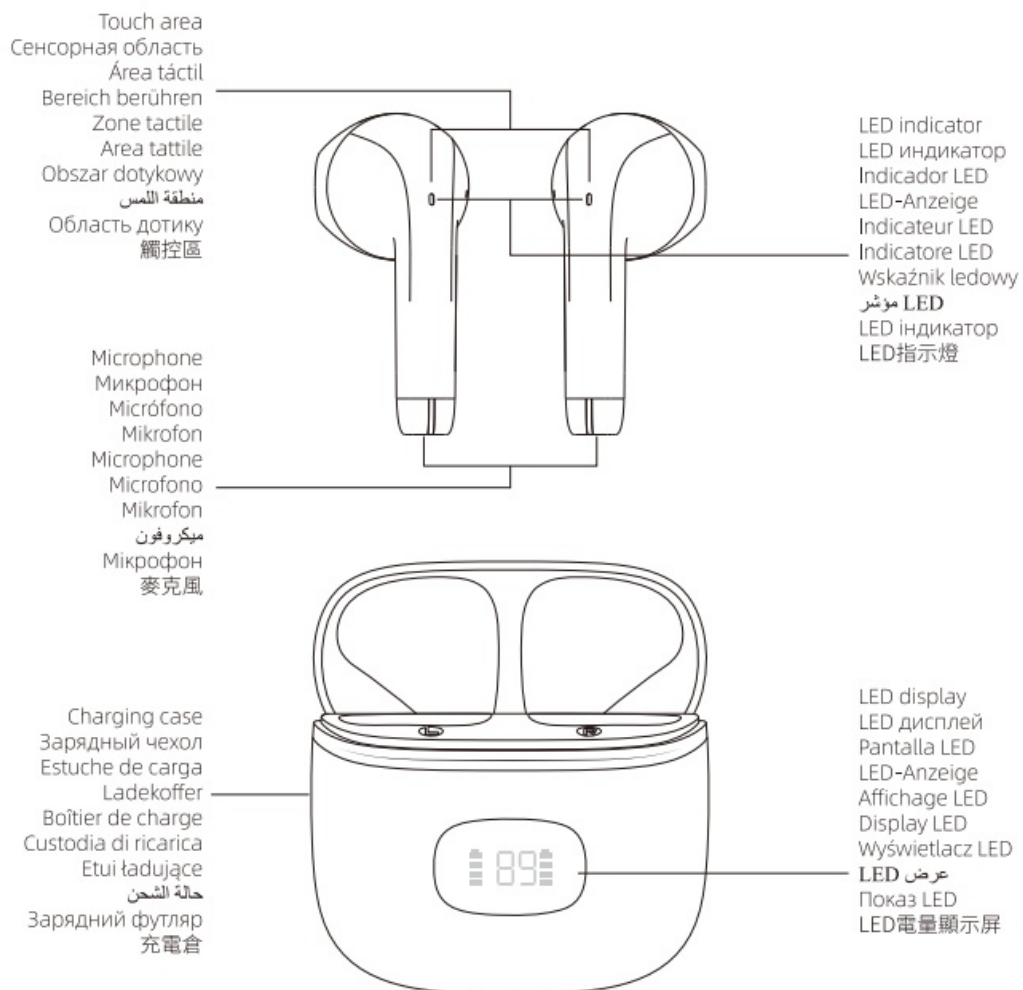
- [1 HOCO EQ1 5.3 Wireless Connection](#)
- [2 Headset Overview](#)
- [3 How to use](#)
- [4 Operation method](#)
- [5 Product parameters](#)
- [6 FCC STATEMENT](#)
- [7 WARRANTY](#)
- [8 Documents / Resources](#)
 - [8.1 References](#)

hoco

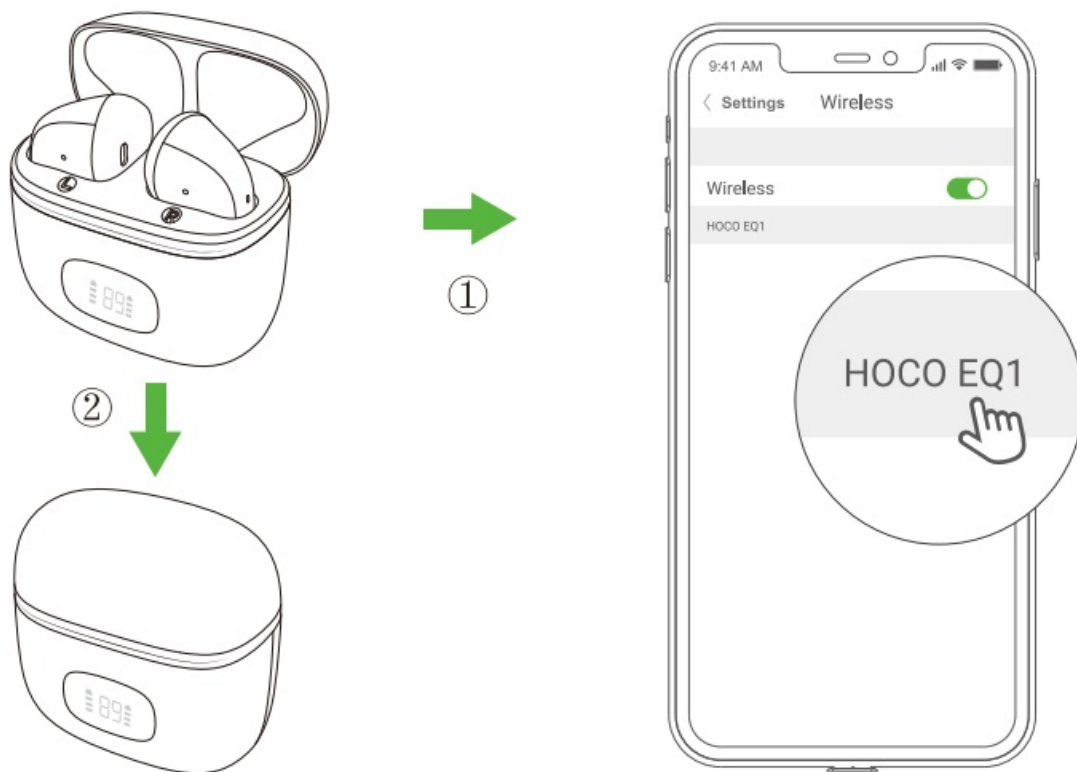
HOCO EQ1 5.3 Wireless Connection



Headset Overview

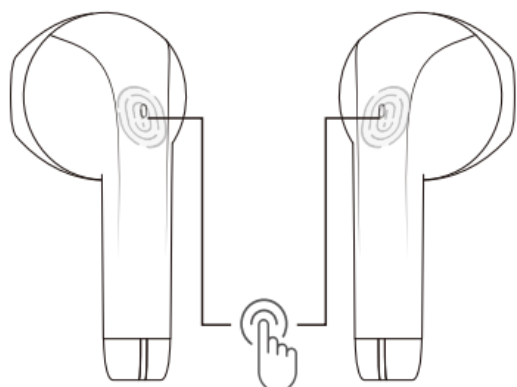


How to use



1. After opening the charging case, the headset will automatically turn on, and the left and right headset will automatically complete pairing. Turn on BT on your phone and search for the BT device "HOCO EQ1". You need to manually connect the device for the first time, and a prompt tone will sound after successful connection.
2. Place the headset in the charging case and close the charging case lid to shut down.

Operation method



	Tap on the touch area Playing/pausing music	
	Double tap on the touch area Next song	
	Triple tap on the touch area Previous song	
	Long press the touch area 2S Wake up "Siri"	
	Tap on the touch area Answer the call	
	Double tap on the touch area Hang up the call	
	Long press the touch area 2S Reject the call	

Product parameters

BT specification: BT 5.3	Charging time of charging case: about 1.5 hours
Support protocol: Headset Hands free A2DP AVRCP	Battery capacity of headset: 40mAh
Transmission range: 10m	Battery capacity of charging case: 400mAh
Transmission frequency: 2402-2480MHz	Talk time/music playback time: 7 hours (80% volume)
Charging voltage: DC5V	Headset standby time: 180 hours

WARNING

1. Do not expose the product to high temperatures, corrosive or high-pressure environments.
2. Do not attempt to disassemble the headset, or to replace any electronic components in it.
3. If the internal devices have fluid leakage, please stop use.
4. Do not expose the battery (battery or combined battery) to excessive heat such as sunlight, fire or similar.

FCC STATEMENT

NOTE: This equipment has been tested and found to comply with the limits for a Class B digital device, pursuant to part 15 of the FCC Rules. These limits are designed to provide reasonable protection against harmful interference in a residential installation. This equipment generates uses and can radiate radio frequency energy and, if not installed and used in accordance with the instructions, may cause harmful interference to radio communications. However, there is no guarantee that interference will not occur in a particular installation. If this equipment does cause harmful interference to radio or television reception, which can be determined by turning the equipment off and on, the user is encouraged to try to correct the interference by one or more of the following measures:

- Reorient or relocate the receiving antenna.
- Increase the separation between the equipment and the receiver.
- Connect the equipment in to an outlet on a circuit different from that to which the receiver is connected.
- Consult the dealer or an experienced radio / TV technician for help

Changes or modifications not expressly approved by the party responsible for compliance could void the user's authority to operate the equipment.

This device complies with Part 15 of the FCC Rules. Operation is subject to the following two conditions:

1. this device may not cause harmful interference, and
2. this device must accept any interference received, including interference that may cause undesired operation.

The device has been evaluated to meet general RF exposure requirements. The device can be used in portable exposure conditions without restriction.

WARRANTY

12-Month limited warranty

gwarancja|AR: 1 12

HOCO. provides 1 year warranty from the date of purchase for the workmanship, all parts of the product and materials. This warranty should be effective only if the warranty card is fully completed and mailed to the

authorized dealers for registration.

The consumers return the defective product to the authorized dealers in their country for repair or replacement after getting a response to the completed warranty card from the authorized dealers.

This warranty is null and void if the unit or components therein have been damaged by improper handling, use or unauthorized repair. In all cases of damage during shipping, for repair, a claim must be filled by purchaser and the shipping carrier, not by hoco. In all cases the manufacturer agree to repair or replace the defective parts but never to exceed the purchase price. As this is a limited warranty, hoco's liability for consequential and incidental damages expressly disclaimed and shall not exceed the purchase price paid.

Please keep this warranty card and valid purchase product certificate as a necessary certificate for warranty service. Please do not modify the content without authorization, otherwise it will be deemed invalid. The company reserves the right to interpret the product after-sales service regulations.

151719898777120

Manufacturer: Hoco technology development (SHENZHEN) co., Lto

Add: Rm 408,

Block A, Weidonglong Business Building, 2125 Meilong Road, Tsinghua Community, Longhua Street, Longhua

District, Shenzhen, P. R. China

Website: www.hocotech.com

WARRANT CARD

Model: _____ Date: _____

Code: _____

Name: _____ Phone: _____

Add: _____

Product maintenann records

維修日期 Repair date	維修編號 Repair number	維修記錄 Maintenance records	維修員簽字 Signature

This card is valid only if it is stamped by the authorised dealer ot Hoco Technology Development (SHENZHEN) co, Ltd

Documents / Resources



[HOCO EQ1 5.3 Wireless Connection](#) [pdf] Instruction Manual
EQ1 5.3 Wireless Connection, EQ1, 5.3 Wireless Connection, Wireless Connection,
Connection

References

- [User Manual](#)

[Manuals+](#), [Privacy Policy](#)

This website is an independent publication and is neither affiliated with nor endorsed by any of the trademark owners. The "Bluetooth®" word mark and logos are registered trademarks owned by Bluetooth SIG, Inc. The "Wi-Fi®" word mark and logos are registered trademarks owned by the Wi-Fi Alliance. Any use of these marks on this website does not imply any affiliation with or endorsement.