

HOCHIKI 408832 Fire Escape Lite



HOCHIKI 408832 Firescape Lite Instruction Manual

[Home](#) » [HOCHIKI](#) » HOCHIKI 408832 Firescape Lite Instruction Manual 

Contents

- 1 HOCHIKI 408832 Firescape Lite
- 2 General information
- 3 Components
- 4 KEY
- 5 Fitting Sequence
- 6 Battery Connections & Requirements
- 7 Parts List
- 8 KIT OPTIONS AVAILABLE
- 9 Technical Data
- 10 Documents / Resources
 - 10.1 References



HOCHIKI 408832 Firescape Lite

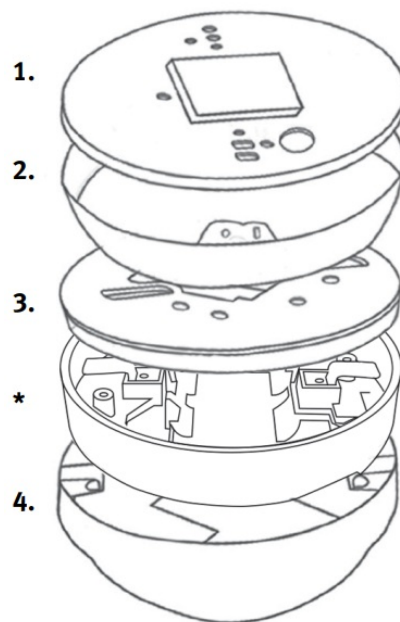


General information

FIREscape lite® is a highly cost-effective and environmentally friendly range of self-contained emergency lighting luminaires and exit signs, utilising the latest LED technology and featuring a uniquely designed 'step-down' transformer, which allows them to be mains-powered. The integral back-up battery provides enough power to illuminate the standard units for over three hours exceeding both UK and European standard requirements. FIREscape lite® units may be fitted at any location where a permanent live feed connection to the lighting circuit can be made. The luminaire range provides 3rd Party verified, ICEL-compliant levels of illumination for escape routes, points of emphasis, open areas and final exits with the high-power models able to perform at heights of 9 metres plus. The exit sign range provides ISO7010-compliant, easy-to-read signage in a variety of direction formats. The internal electronics of each device provide continual self-diagnosing of the charging circuit, back-up battery and the main LED. The integral bi-coloured status LED instantly indicates if there is a problem with the performance of any element, ensuring the device will always perform to its optimum. With these features, FIREscape lite® provides the ultimate in emergency lighting safety for your building and its occupants.

Components

The standalone lighting unit is installed in the following sequence (see below).

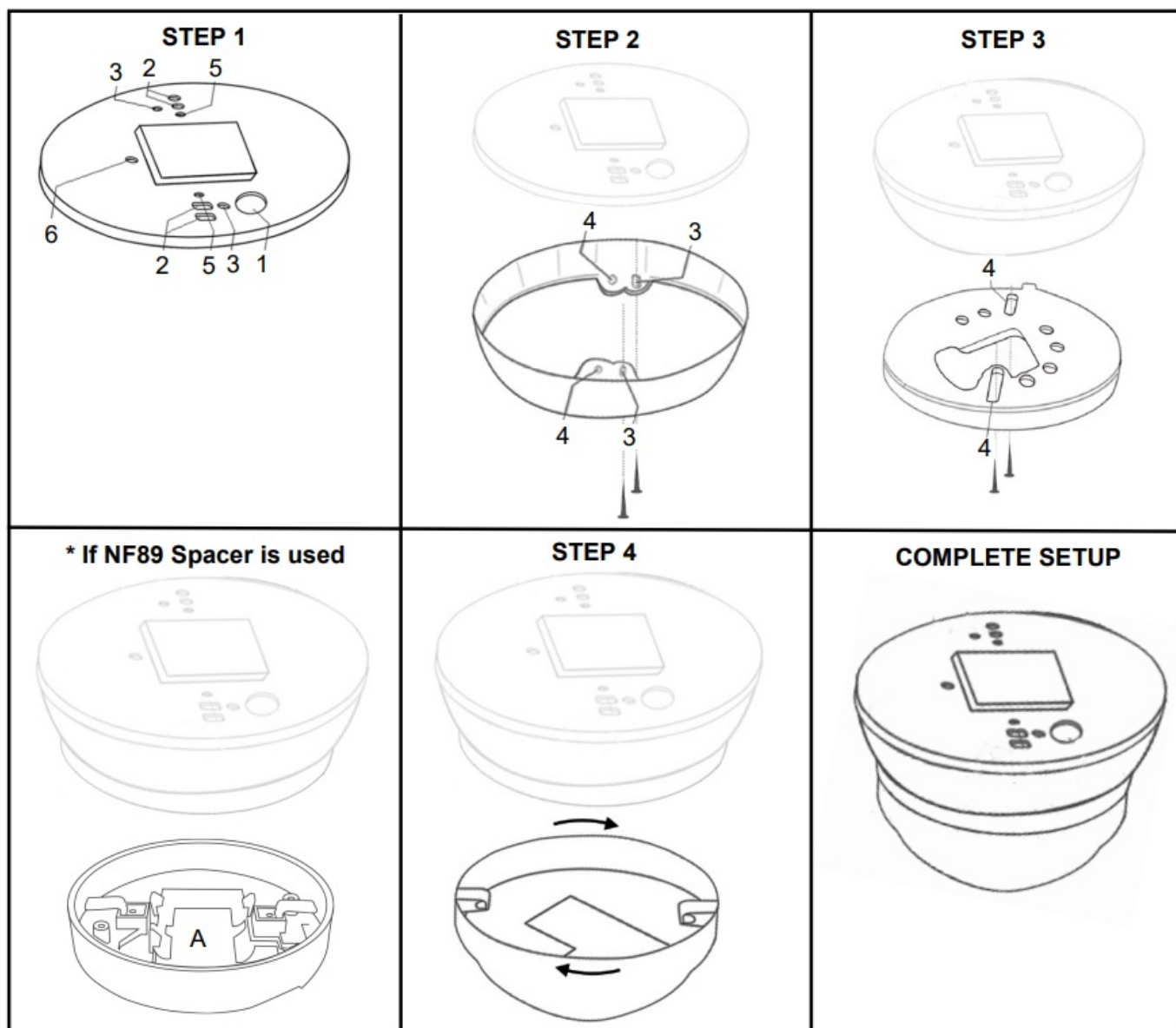


KEY

1. NFW-SDT Transformer
2. YBD-RA Spacer
3. YBN-R/3 Mounting Base NF89 Spacer (if required)
4. Luminaire / Exit Sign

SURFACE MOUNT ONLY, WILL NOT SECURE TO BESA BOX

Fitting Sequence



STEP 1

Thread the mains cable through the NFW-SDT using HOLE 1. Alternatively, if the cable runs along the surface of the fixing plane. Make a cable entry hole in the side of the spacer unit (YBD-RA). Fix the transformer unit to the fixing surface using HOLES 2 using screws (supplied). Note there are two sets of fixing holes for 60mm or 78mm. If necessary, use fastening plugs supplied. Connect the terminal blocks to the mains lead and then attach them to the brown and blue cables.

STEP 2

Fix the spacer unit (YBD-RA) onto the transformer unit using HOLES 3 and 4x16mm screws (supplied). Offer up the standard mounting base (YBN-R/3) to the fitted spacer unit and feed the flying leads from the transformer through the base's central hole.

STEP 3

Fit the mounting base to the spacer unit using HOLES 4 and screws (supplied)

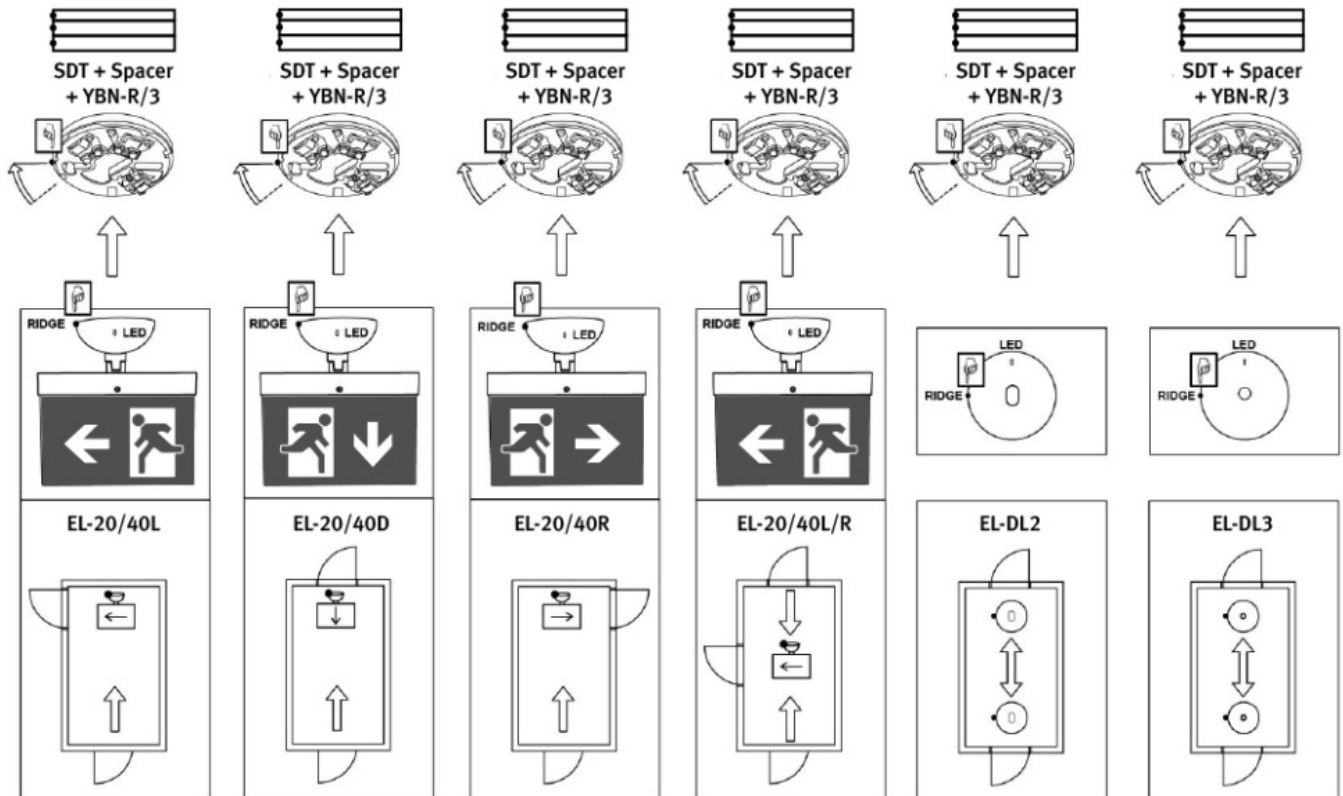
NF89

- If fitting a high-power luminaire, please fit the NF89 Battery Spacer: Fit the NF89 battery into section A & connect the battery to the luminaire. When completing step 4, if you have fitted the spacer, the luminaire or exit sign is fitted as normal to the spacer. Terminate the red & black flying leads from the transformer unit onto the following terminals on the mounting base.

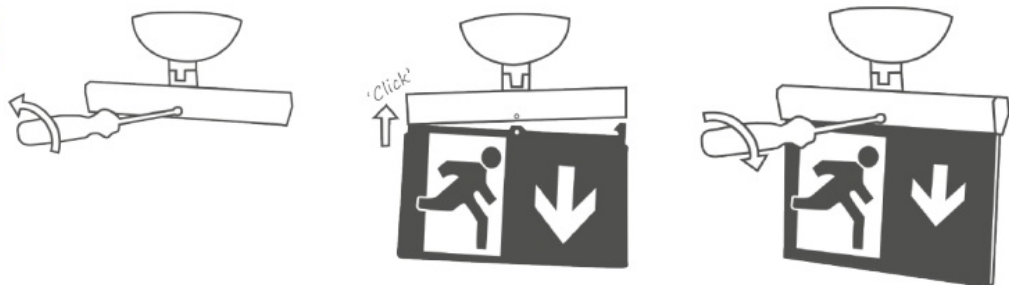
RED LEAD	TERMINALS 1 or 2
BLACK LEAD	TERMINALS 5 or 6

Fit an EL-BAT450 or an EL-NF89BAT battery to the luminaire or exit sign and twist it onto the mounting base.

FOR EXIT SIGN FITTING ONLY, PLEASE FOLLOW THE STEPS BELOW

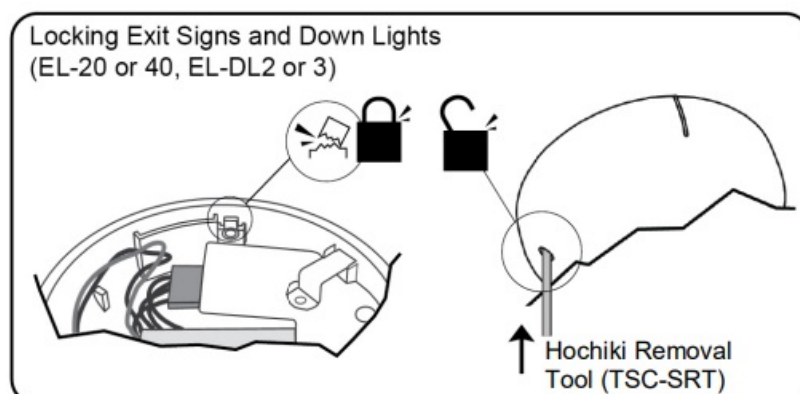


Lens Fitting Step Guide >





FOR ALL KITS

How to Lock Exit Signs & Down Lights Step Guide >



Battery Connections & Requirements

A battery is included in the box, but if a replacement battery is required, please review the parts list below .

Replacement Battery Requirements		 (BLUE)
Model	Battery Type	
NF89-O	EL-NF89BAT 2950mAh	
NF89-C	EL-NF89BAT 2950mAh	
DL2	EL-BAT450	
DL3	EL-BAT450	
EL20	EL-BAT450	
EL40	EL-BAT450	

Parts List

Standard Kit Contents	
Step Down Transformer	NFW-SDT
Common Mounting Base	YBN-R/3 (WHT)
Spacer	YBD-RA (WHT)
Battery Spacer	NFW89 Spacer
Battery	EL-NF89BAT / EL-BAT450 Battery
12 Variants	
Corridor Down Light	NFW-SDT/DL2 Kit
Open Space Down Light	NFW-SDT/DL3 Kit
High Power Corridor Down Light	NFW-SDT/NFW89/C
High Power Open Space Down Light	NFW-SDT/NFW89/O
FIREscape 20m Lens Right Arrow	NFW-SDT/EL20R Kit
FIREscape 20m Lens Down Arrow	NFW-SDT/EL20D Kit
FIREscape 20m Lens Left Arrow	NFW-SDT/EL20L Kit
FIREscape 20m Lens Up Arrow	NFW-SDT/EL20U Kit
FIREscape 40m Lens Right Arrow	NFW-SDT/EL40R Kit
FIREscape 40m Lens Down Arrow	NFW-SDT/EL40D Kit
FIREscape 40m Lens Left Arrow	NFW-SDT/EL40L Kit
FIREscape 40m Lens Up Arrow	NFW-SDT/EL40U Kit

KIT OPTIONS AVAILABLE



NFW-SDT/DL2 Kit

Kit Includes

- Corridor luminaire
- Step-Down Transformer
- Base
- Spacer
- Battery
- Instruction Manual

NFW-SDT/DL3 Kit

Kit Includes

- Open space luminaire
- Step-Down Transformer
- Base
- Spacer
- Battery
- Instruction Manual

NFW-SDT/NF89/C Kit

Kit Includes

- High-powered corridor luminaire
- Step-Down Transformer
- Base
- Spacer & Battery Spacer
- Battery
- Instruction Manual



NFW-SDT/NF89/O Kit

Kit Includes

- High powered open space luminaire
- Step-Down Transformer
- Base
- Spacer & Battery Spacer
- Battery
- Instruction Manual

NFW-SDT/EL20R Kit

Kit Includes

- 20m Frame
- Right Arrow Legend (ISO7010)
- Step-Down Transformer
- Base
- Spacer
- Battery
- Instruction Manual

NFW-SDT/EL20D Kit



Kit Includes

- 20m Frame
- Down Arrow Legend (ISO7010)
- Step-Down Transformer
- Base
- Spacer
- Battery
- Instruction Manual

NFW-SDT/EL20L Kit

Kit Includes

- 20m Frame
- Left Arrow Legend (ISO7010)
- Step-Down Transformer
- Base
- Spacer
- Battery
- Instruction Manual

NFW-SDT/EL20U Kit

Kit Includes

- 20m Frame
- Up Arrow Legend (ISO7010)
- Step-Down Transformer
- Base
- Spacer
- Battery

- Instruction Manual

NFW-SDT/EL40R Kit

Kit Includes

- 40m Frame
- Right Arrow Legend (ISO7010)
- Step-Down Transformer
- Base
- Spacer
- Battery
- Instruction Manual



NFW-SDT/EL40D Kit

Kit Includes

- 40m Frame
- Down Arrow Legend (ISO7010)
- Step-Down Transformer
- Base
- Spacer
- Battery
- Instruction Manual

NFW-SDT/EL40L Kit

Kit Includes

- 40m Frame
- Left Arrow Legend (ISO7010)
- Step-Down Transformer
- Base
- Spacer
- Battery

- Instruction Manual

NFW-SDT/EL40U Kit

Kit Includes

- 40m Frame
- Up Arrow Legend (ISO7010)
- Step-Down Transformer
- Base
- Spacer
- Battery
- Instruction Manual

Technical Data

Model	NFW-SDT including YBN-R/3(WHT) & YRD-RA(WHT)
Dimensions of Above (mm)	32H x 100 Ø
Dimensions (mm)	These figures include 32H from above
NFW89/O	94H x 100 Ø
NFW89/C	94H x 100 Ø
EL-DL2	72H x 100 Ø
EL-DL3	72H x 100 Ø
40m Exit Sign & Lens	322H x 330W
20m Exit Sign & Lens	242H x 200W
Mains transformer	1VA / 30VAC
Equipment supplied	2 x fastening plug, 2 x fastening screw, 4 x fastening screw for frame and rim Connection Block
Water Resistance	IP20

LED Status Indicator

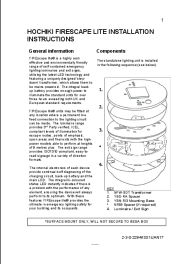
As soon as the luminaire or exit sign is attached to the mounting base the fitted battery will begin to trickle charge from the connected step down transformer. During this time the LED status indicator on the luminaire or exit sign will blink green. Once fully charged, the LED will show steady green.

The LED is bi-coloured and will show the following indications:

- **Steady Green** Fully charged and healthy
- **Blinking Green** Battery charging
- **Steady Red** LED and battery failure
- **Blinking Red** Battery fault
- **Blinking Red/Green** LED fault

Hochiki Europe (UK) Ltd Grosvenor Road, Gillingham Business Park, Gillingham, Kent, ME8 0SA, England
Telephone: +44(0)1634 260133 Facsimile: +44(0)1634 260132 Email: sales@hochikieurope.com Web: www.hochikieurope.com Hochiki Europe (UK) Ltd. reserves the right to alter the specification of its products from time to time without notice. Although every effort has been made to ensure the accuracy of the information contained within this document it is not warranted or represented by Hochiki Europe (UK) Ltd. to be a complete and up-to-date description. Please check our web site for the latest version of this document.

Documents / Resources



[HOCHIKI 408832 Firescape Lite \[pdf\] Instruction Manual](#)
408832 Firescape Lite, 408832, Firescape Lite, Lite

References

- [Home | Hochiki](#)
- [Manual-Hub.com - Free PDF manuals!](#)
- [User Manual](#)

[Manuals+.](#) [Privacy Policy](#)

This website is an independent publication and is neither affiliated with nor endorsed by any of the trademark owners. The "Bluetooth®" word mark and logos are registered trademarks owned by Bluetooth SIG, Inc. The "Wi-Fi®" word mark and logos are registered trademarks owned by the Wi-Fi Alliance. Any use of these marks on this website does not imply any affiliation with or endorsement.