



HOBO S-LIB-M003 Silicon Pyranometer Smart Sensor Owner's Manual

[Home](#) » [Hobo](#) » HOBO S-LIB-M003 Silicon Pyranometer Smart Sensor Owner's Manual 



Contents

[1 Silicon Pyranometer Smart Sensor \(S-LIB-M003\) Manual](#)

- [1.1 Silicon PyranometerSmart Sensor](#)
- [1.2 Specifications](#)
- [1.3 Spectral Characteristics](#)
- [1.4 Cosine Correction](#)
- [1.5 Mounting](#)
- [1.6 Specialized Application Mounting](#)
- [1.7 Operation](#)
- [1.8 Maintenance](#)
- [1.9 Verifying Sensor Accuracy](#)

[2 Documents / Resources](#)

[3 Related Posts](#)

Silicon Pyranometer Smart Sensor (S-LIB-M003) Manual



**Silicon Pyranometer
Smart Sensor**

S-LIB-M003


Accessories:

- Light sensor mounting bracket (M-LBB)
- Light sensor level (M-LLA)

The silicon pyranometer smart sensor is designed to work with HOBO® stations. The smart sensor has a plug-in modular connector that allows it to be added easily to a station. All calibration parameters are stored inside the smart sensor, which automatically communicates configuration information to the logger without any programming, calibration, or extensive user setup.

Specifications

Measurement Range	0 to 1280 W/m ²
Spectral Range	300 to 1100 nm (see Plot A)
Accuracy	Typically within ± 10 W/m ² or $\pm 5\%$, whichever is greater in sunlight; Additional temperature induced error ± 0.38 W/m ² /°C from 25°C (0.21 W/m ² /°F from 77°F)
Angular Accuracy	Cosine corrected 0 to 80 degrees from vertical (see Plot B); Azimuth Error < $\pm 2\%$ error at 45 degrees from vertical, 360 degree rotation
Resolution	1.25 W/m ²
Drift	< $\pm 2\%$ per year
Calibration	Factory recalibration available
Operating Temperature Range	-40° to 75°C (-40° to 167°F)
Environmental Rating	Weatherproof
Housing	Anodized aluminum housing with acrylic diffuser and O-ring seal
Dimensions	4.1 cm height x 3.2 cm diameter (1 5/8 in. x 1 1/4 in.)
Weight	120 g (4 oz)
Bits per Sample	10

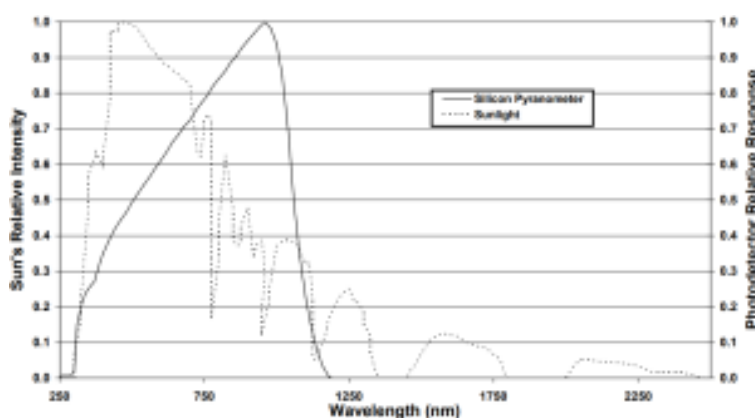
Number of Data Channels*	1
Measurement Averaging Option	Yes
Cable Length Available	3.0 m (9.8 ft)
Length of Smart Sensor Network Cable*	3.0 m (9.8 ft)
	The CE Marking identifies this product as complying with all relevant directives in the European Union (EU).

* A single HOBO station can accommodate 15 data channels and up to 100 m (328 ft) of smart sensor cable (the digital communications portion of the sensor cables).

Spectral Characteristics

This sensor uses a silicon photodiode to measure solar power per unit area (watts per square meter). Silicon photodiodes are not ideal for use as solar radiation sensors and the photodiode in this silicon pyranometer is no exception (see Plot A). An ideal pyranometer has equal spectral response from 280 to 2800 nm. However, when calibrated properly and used correctly, the silicon pyranometer smart sensor should perform well in most situations.

Sun's Relative Intensity and the Typical Relative Response of the Silicon Pyranometer versus Wavelength



Plot A: S-LIB-M003 Silicon Pyranometer Response Curve

The sensor is calibrated for use in sunlight (an Eppley Precision Spectral Pyranometer is used as reference standard). Accordingly, if the sensor is used under natural sunlight, the measurement errors will be small. Note that significant errors may result from using the sensor under artificial light, within plant canopies, in greenhouses, or any other conditions where the spectral content differs from sunlight.

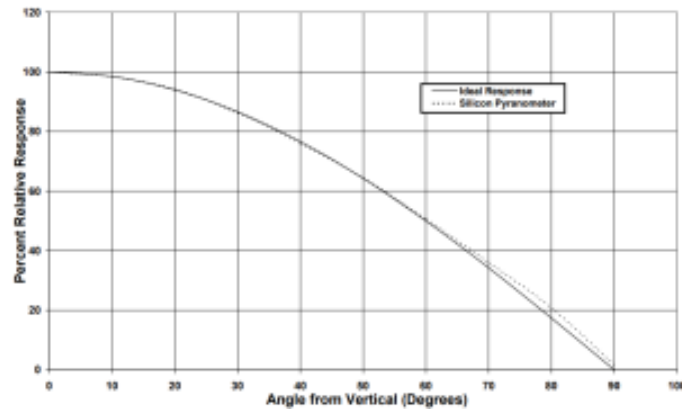
Cosine Correction

The silicon pyranometer smart sensor housing is designed to give an accurate cosine response. Plot B shows a

plot of relative intensity versus angle of incidence for a typical sensor and for the theoretical ideal response. Deviation from ideal response is less than 5% from 0 to 70 degrees and less than 10% from 70 to 80 degrees.

Note that as the angle approaches 90 degrees, the ideal cosine response approaches zero. As a result, small errors in measured intensity will result in very large percentage errors compared to the ideal response from 80 to 90 degrees.

Typical Cosine Response of Silicon Pyranometer



Plot B: S-LIB-M003 Typical Cosine Response Curve

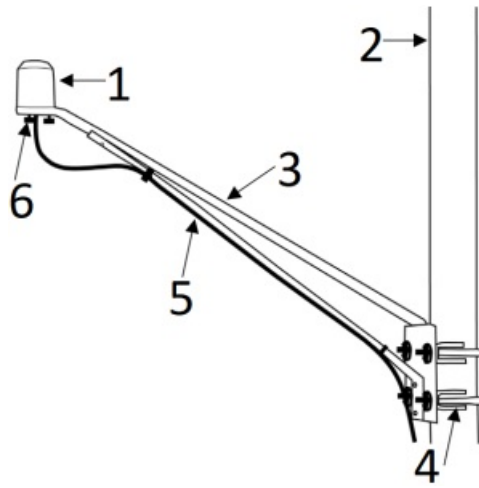
Mounting

Bracket Mounting

It is recommended that you mount the silicon pyranometer smart sensor with the light sensor bracket (M-LBB) on a pole or tripod. To mount the sensor using the bracket:

1. Attach the light sensor bracket to a 1¼ inch – 15/8 inch pole with the provided U-bolts.
Note: The bracket can also be mounted on a flat, vertical surface using four screws.
2. Position the silicon pyranometer sensor on top of the bracket with its cable running through the slot in the bracket.
3. Using the two screws supplied, attach the sensor to the bracket through the two holes on either side of the slot.
Note: Do not completely tighten the screws until you level the sensor.
4. Position the bracket so it faces toward the equator, minimizing the chance of shading.
5. Mount the bracket on the mast with the two U-bolt assemblies, mounting it high enough on the mast to avoid the possibility of shading the sensor.

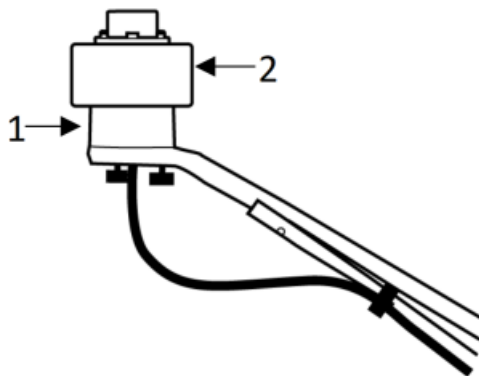
Note: If you mount the sensor above eye level, it is recommended that you use a step ladder or other secure platform when leveling the sensor so that you can clearly view the light sensor level (M-LLA).



Silicon Pyranometer Sensor Bracket Mounting

1. Silicon pyranometer smart sensor
2. Mast
3. Light sensor bracket
4. U-bolt assembly
5. Silicon pyranometer sensor cable
6. Thumbscrew

6. Make sure the screws holding the sensor to the mounting bracket are loose.
7. Place the light sensor level on the silicon pyranometer smart sensor.
8. Adjust the height of the thumbscrews to level the sensor (start with the thumbscrews protruding about 1/16 inch from the bracket).
9. Once the sensor is near level, tighten the Phillips head screws.
10. Check the level and repeat above steps if necessary.
11. **IMPORTANT:** Don't forget to remove the level when you are done with it.



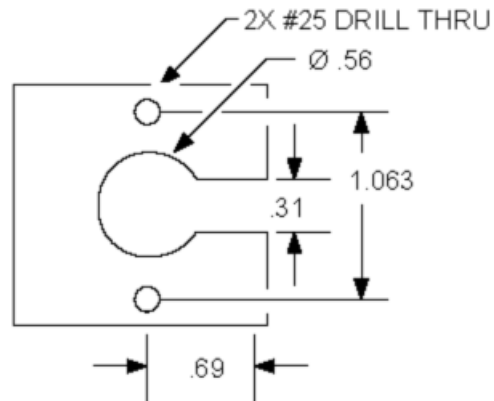
Leveling the Sensor on the Light Sensor Bracket

1. Silicon pyranometer sensor
2. Light sensor level (remove for operation)

Specialized Application Mounting

To mount the silicon pyranometer sensor using a mounting plate of your own design:

1. Drill a 0.56 (9/16) inch hole in the middle of the plate, then drill two #25 holes 1.063 (1-1/16) inches apart on either side of the center hole. Cut a 0.31 (5/16) inch-wide slot in the mounting plate. See diagram on next page. The plate should be a thickness of 1/8 inch or less.
2. Slide the sensor through the 0.31 (5/16) inch-wide slot.
3. Attach the sensor using two 6-32 x 3/8 inch screws and lock washers (not included).
4. Shim the sensor as necessary to level it.



Recommended Mounting Plate Dimensions

Mounting Considerations

- Small errors in alignment can produce significant errors. Be certain that the sensor is mounted level.
- Mount the sensor where it will not be in a shadow. Any obstruction should be below the plane of the sensor head. If that is not possible, try to limit obstructions to below 5 degrees, where the effect will be minimal.
- If possible, avoid locating the sensors in dusty locations. Dust, pollen, and salt residue that collect on the top of the sensor can significantly degrade accuracy.
- Refer to the station manual and Tripod Setup Guide for more information regarding setting up stations.

Connecting the Smart Sensor to a Station

To connect the sensor to a station, stop the station from logging and insert the smart sensor's modular jack into an available smart sensor port on the station. See the station manual for details on operating stations with smart sensors.


Operation

The silicon pyranometer smart sensor supports measurement averaging. When measurement averaging is enabled, data is sampled more frequently than it is logged. The multiple samples are then averaged together and the average value is stored as the data for the interval. For example, if the logging interval is set at 10 minutes and the sampling interval is set at 1 minute, each recorded data point will be the average of 10 measurements.

Measurement averaging is useful for reducing noise in the data. It is recommended that you use measurement averaging whenever the silicon pyranometer smart sensor is placed in an area where the light level can vary quickly with respect to the logging interval (for example, during partly cloudy conditions). Note that fast sampling intervals less than 1 minute may significantly reduce battery life. See the station manual for more details about battery life.


Maintenance

Dust on the sensor will degrade sensor accuracy. Periodically inspect the sensor, and if necessary, gently clean the diffuser with a damp sponge. Do not open the sensor as there are no user serviceable parts inside.

 **Warning:** DO NOT use alcohol, organic solvents, abrasives, or strong detergents to clean the diffuser element on the silicon pyranometer smart sensor. The acrylic material used in the sensors can be crazed by exposure to alcohol or organic solvents. Clean the sensor only with water and/or a mild detergent such as dishwashing soap if necessary. It is recommended that you use vinegar to remove hard water deposits from the diffuser element. Under no circumstances should the smart sensor be immersed in any liquid.

Verifying Sensor Accuracy

It is recommended that you check the accuracy of the solar radiation smart sensor annually. The solar radiation smart sensor cannot be user-calibrated. Onset uses precision components to obtain accurate measurements. If the sensor readings are slightly different than expected and you are using the sensor with an RX station, then you can use scaling in HOBOLink to perform a linear adjustment of the light sensor data to improve the accuracy. Use a light meter to take readings that you can use to determine a calibration factor to enter in HOBOLink. To do this:

1. Make sure the light meter is positioned at the same angle to the sun (or other light source) as the sensor (e.g. point the light meter straight up if the sensor is also pointing straight up).
2. Temporarily set the logging interval for the sensor in HOBOLink to 1 minute and Save.
3. Press the Connect button on the station.
4. Press the Start button if the station is not logging.
5. Make sure the station logs for at least 5 minutes so that there is a series of at least 5 readings (1 every minute). Note the light meter readings over the same time.
6. Divide the average light meter reading by the average solar radiation sensor reading to determine a calibration coefficient.
7. In HOBOLink, go to the device page and click  next to the sensor and enable scaling.
8. Enter the calibration coefficient from step 6 in the Multiplier field and leave the Offset field blank.
9. Fill in the Scaled Units with your preferred units, such as W/m². Type Solar Radiation in the Scaled Measurement Type field.
10. Save the changes.
11. Change the logging interval back to your preferred rate.

If the smart sensor is not providing accurate data even after the adjustment for scaling, then it may be damaged or too far out of calibration.



1-508-759-9500 (U.S. and International)
1-800-LOGGERS (564-4377) (U.S. only)

www.onsetcomp.com/support/contact

© 2001-2020 Onset Computer Corporation. All rights reserved. Onset and HOBO are trademarks or registered trademarks of Onset Computer Corporation. All other trademarks are the property of their respective companies.

6708-G



[HOB0 S-LIB-M003 Silicon Pyranometer Smart Sensor](#) [pdf] Owner's Manual
S-LIB-M003, Silicon Pyranometer Smart Sensor, S-LIB-M003 Silicon Pyranometer Smart Sensor, Pyranometer Smart Sensor, Smart Sensor