



HOBO MX1104 Multi Channel Data Loggers User Guide

[Home](#) » [Hobo](#) » HOBO MX1104 Multi Channel Data Loggers User Guide 

HOBO MX1104 Multi Channel Data Loggers User Guide

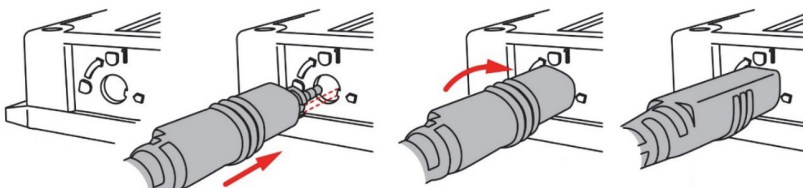


1. INSTRUCTION

- Download HOBOconnect® to a phone or tablet from the App Store® or Google Play™.
- Download HOBOconnect to a Windows® computer from www.onsetcomp.com/products/software/hoboconnect.

2. Open the app. Enable Bluetooth® in your device settings if prompted.

3. Install any external self-describing sensors as shown.



4. Press either button on the logger to wake it up.

5. Tap Devices in the app. Tap the logger tile in the app to connect to the logger. (Press the top button on the logger again to bring it to the top of the list if there are multiple loggers.) If the logger does not appear in the list,

make sure it is within range of your phone, tablet, or computer.

6. **a.** Once connected, tap Configure & Start to set up the logger.
b. Choose your logger settings, including selecting settings for any external analog sensors. Make sure all channels you want to log are enabled.
c. Tap Start to save the settings to the logger. The logger begins logging based on the settings you selected. Press the start button on the logger if you set it up to start logging with a button push.
7. Deploy the logger to the location where you want to monitor conditions. Insert one of the included plugs into any empty ports. Follow additional deployment guidelines in the full product manual at www.onsetcomp.com/resources/documentation/23968mx1104andmx1105manual.
8. Tap Devices, connect to the logger, and then tap Download Data. After the download is complete, you can choose to export and share the file. You can also view your files by tapping Data at the bottom of the screen.



1. Top button

- Cycle through each channel to view the latest sensor readings.
- Wake up the logger.
- Bring the logger to the top of the list in the app.
- Silence a beeping alarm.
- Turn on the LCD.

2. Bottom button

- Cycle through any statistics and alarm readings for the channel currently displayed (if applicable).
- Wake up the logger.
- Silence a beeping alarm.
- Turn on the LCD.



For detailed specifications and information about the logger, scan the code above or go to www.onsetcomp.com/support/manuals/23968-mx1104-and-mx1105-manual.

Contents

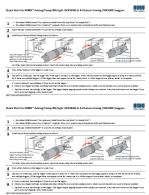
[1 Documents /](#)

[Resources](#)

[1.1 References](#)

[2 Related Posts](#)

Documents / Resources

	<p>HOBO MX1104 Multi Channel Data Loggers [pdf] User Guide MX1104, MX1105, MX1104 Multi Channel Data Loggers, Multi Channel Data Loggers, Data Loggers</p>
---	--

References

- [0 HOBOconnect Monitoring App | Onset's HOBO and InTemp Data Loggers](#)
- [0 HOBO® MX Analog/Temp/RH/Light \(MX1104\) and MX 4-Channel Analog \(MX1105\) Data Logger Manual | Onset's HOBO and InTemp Data Loggers](#)

[Manuals+](#).