

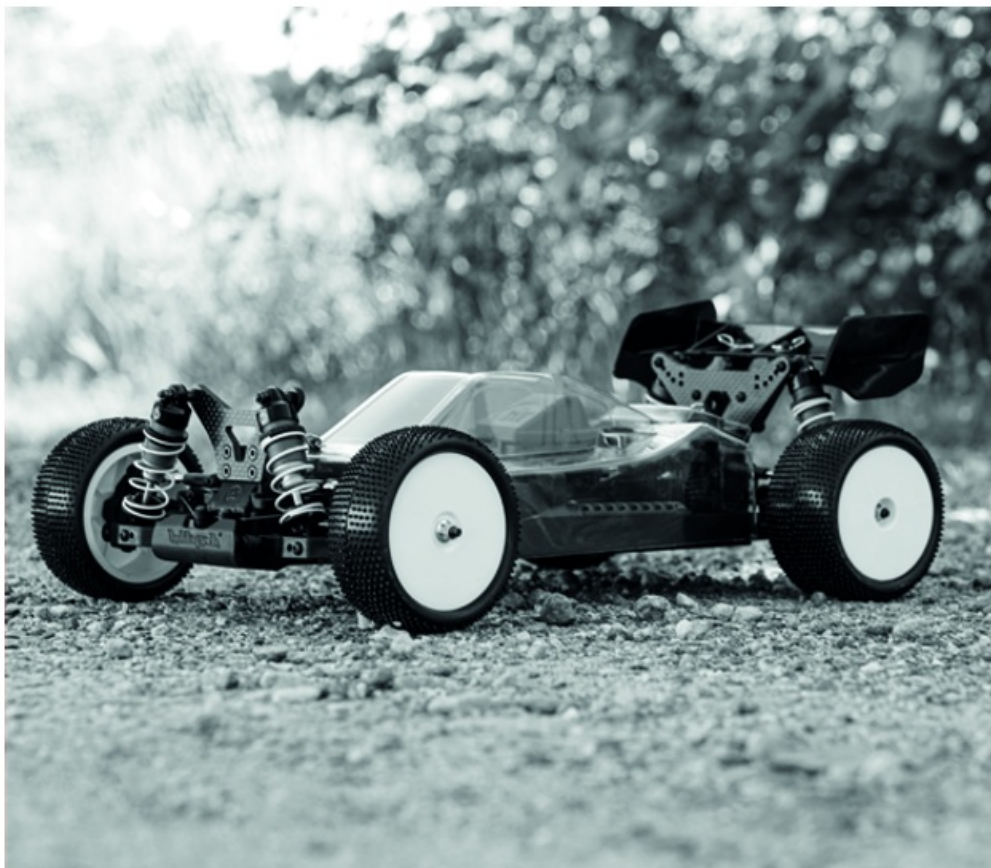


hobbytech 8.BXR-S2.KIT Combo Brushless Buggy Instruction Manual

[Home](#) » [hobbytech](#) » hobbytech 8.BXR-S2.KIT Combo Brushless Buggy Instruction Manual 



INSTRUCTION MANUAL



BXR-S2.KIT VERSION

Item # 8.BXR-S2.KIt



- This is not a toy! Not suitable for children under 14 years old without adult supervision.







Designed and developed in France



Contents

- 1 RECOMMENDED TOOLS (NOT PROVIDED)
- 2 ITEMS REQUIRED (NOT PROVIDED)
- 3 HARDWARE LIST
- 4 90 DAYS WARRANTY AND SERVICE INFORMATION
- 5 IMPORTANT – READ THIS BEFORE RUNNING
- 6 SAFETY PRECAUTIONS
- 7 FRONT & REAR DIFFERENTIAL ASSEMBLY
- 8 OPTION PARTS
- 9 Documents / Resources
 - 9.1 References

RECOMMENDED TOOLS (NOT PROVIDED)

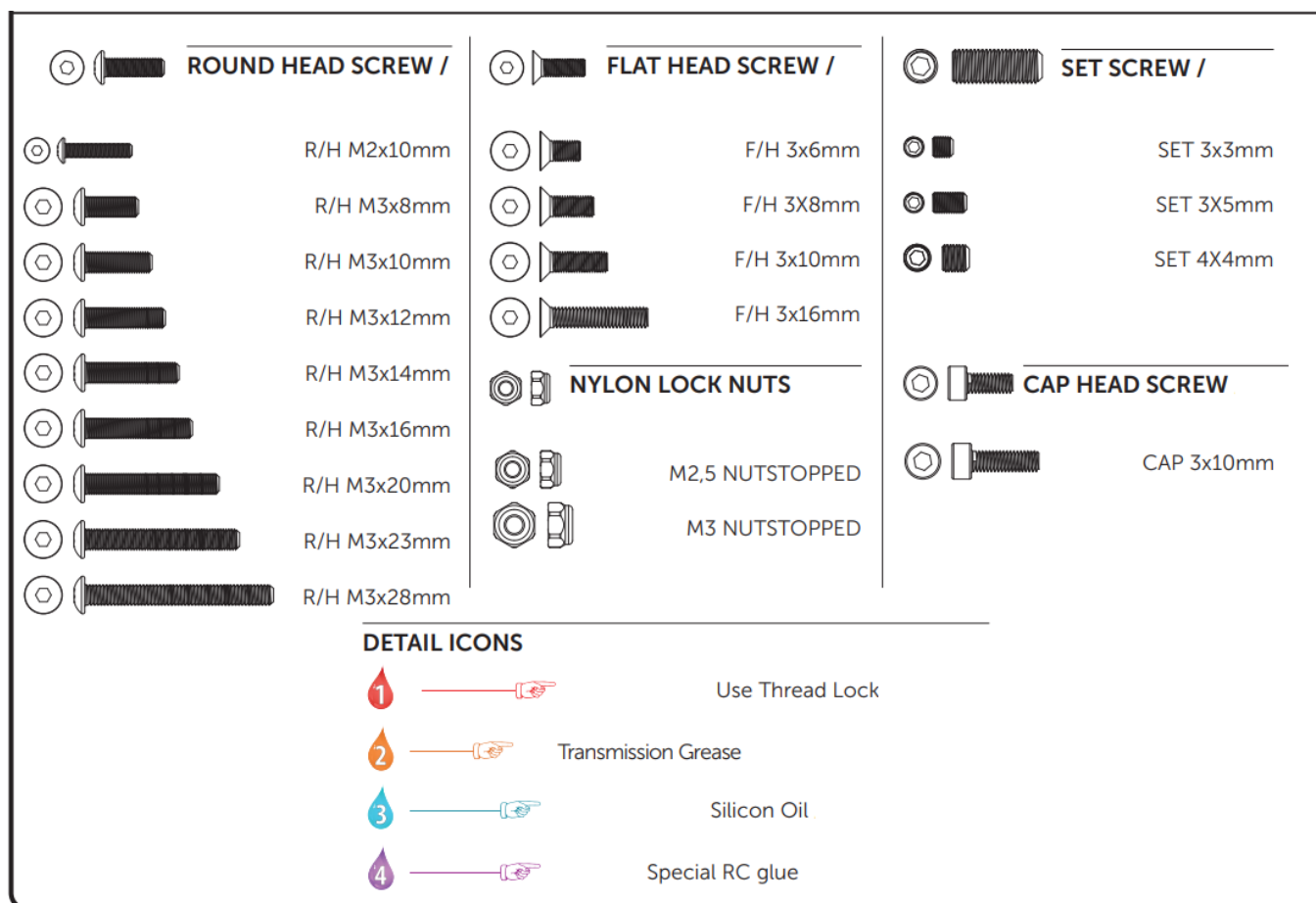
 <p>HTR-502 it of 4 allen screwdrivers 1.5 / 2 / 2.5 and 7mm socket</p>	 <p>Tools / Outillage Knife edge reamer / Knife / Plier / curved plier / (5 - 7 - 8mm) flat keys / 7mm wheel wrench / Lexan scissors /</p>		
 <p>1 Tread lock / Frein filet</p>	 <p>2 Transmission grease</p>	 <p>3 Silicon oil. Follow assembly manual for recommendation</p>	 <p>4 Special RC glue /</p>

ITEMS REQUIRED (NOT PROVIDED)

 <p>COMBO BRUSHLESS 50Amp WP + 4P 3652SL 4600Kv motor + program card Recommendation : # KN-COMBO-B3</p>		 <p>Transmitter & receiver. Recommendation : # KN-KT3X/SET 3 channels / 3 voies</p>
 <p>Steering servo Recommendation : # KN-1008LVRX</p>	 <p>Charger Recommendation : # KN-MULTI60-PLUS</p>	 <p>Special R/C body paint</p>
 <p>LiPo battery Recommendation : # KN-LP2S2200 2S 2200mAh LiPo battery</p>	 <p>LiPo battery Recommendation : # KN-LP2S4200 2S 4200mAh LiPo battery</p>	 <p>LiPo battery Recommendation : # KN-LP2S5600 2S 5600mAh LiPo battery</p>

HARDWARE LIST

Real size elements: Put the item to compare and check its size and prevent from mistakes!



90 DAYS WARRANTY AND SERVICE INFORMATIONS

COMPONENT WARRANTY PERIOD

PLEASE READ THE FOLLOWING INFORMATION CAREFULLY !

Please note this is a high-quality hobby product and not a toy. Therefore, it is necessary that children under 14 years are supervised by an adult. The guardians and / or parents have the responsibility to provide the appropriate guidance and supervision of the minors .

This product has a 90 day warranty, which is only guaranteed to the original purchaser. The warranty valid only to products that have been purchased from an authorized Hobbytech dealer. Warranty claims will be processed only with a valid proof of purchase / receipts. If within the warranty period, a portion of the product fails due to manufacturing defects, then it is within the discretion of Hobbytech to repair it or replace it. The decision to repair or replace the part will be taken by Hobbytech. After use, we do not offer new for old warranty.

WARRANTY DISCLAIMER

This high performance model was made with highest attention and care and should be treated with respect. Excluded from the warranty are components that have been damaged by wrong installation, mishandling, accident, operation, maintenance, lack of maintenance and care, as well as abuse and / or repair attempts. Furthermore excluded from the guarantee are wearing parts such as fuses and batteries, visual impairments, shipping -, transport costs.

WARRANTY CLAIM

Please contact your dealer with the warranty claim and / or repair. Your dealer and Hobbytech will make an proper decision that will help you as soon as possible. For invalid warranty claims you may be charged for the processing costs before the parts are returned. All repairs which are necessary by negligence or abuse are bill in advance. In case you decide that you not want to repair your product then Hobbytech editing and reserves the right to charge shipping costs .

IMPORTANT – READ THIS BEFORE RUNNING

PLEASE READ ALL INSTRUCTIONS AND FAMILIARIZE YOURSELF WITH THE PRODUCTS AND CONTROL BEFORE OPERATION.

This product is not a toy. It is a high performance model product. It is important to familiarize yourself with the model, its manual, and its construction before assembly and operation. Adult supervision is necessary

CAUTION

To avoid serious personal injury and property damage, operate all remotely controlled models in a responsive manner as out- lined below.

R/C car models can exceed speeds of 70km/h (43mph), and cannot be stopped quickly.

1. Never run R/C models on the street or highways, as it could cause or contribute to serious traffic accidents.
2. Never run an R/C model near people or animals, nor use people or animals as obstacles when operation R/C vehicles.
3. To avoid injury to persons or animals, and damage to property, never run a R/C model in a confined or crowded area.
4. Running R/C models into furniture or other inanimate objects will cause damage to the objects and the R/C models.

CAUTION DURING OPERATIONS

When the R/C model is in operation, do not touch any of its moving parts, such as drive shafts, wheels, as the rotating parts can cause serious injury.

1. The vehicle motor gets very hot during running and could cause burns if touched.
2. Make sure that no one else is using the same frequency as yours in your running area. Using the same frequency at the same time, whether is driving, flying or sailing, can cause loss of control of the R/C models, resulting in serious accidents.
3. Properly connect plugs. To prevent electrical shock and/or damage to the product resulting from a short-circuit: insulate connections with heat shrink tubing or electrical tape. Before running vehicle, check that battery wiring and plugs are not so loose as to drag on the ground. Properly secure cables using electrical tape or nylon tie-wraps.
4. Stiff rotation of gears, shafts, joints and wheels can burn out the motor. It's recommended to check proper joint and shaft rotation by using one 1,5V dry cell during assembly of the model. A worn motor will overheat and result in a short running time. Replace a worn out motor as soon as possible.
5. R/C models will run out of control when either the receiver or transmitter battery voltage drops off. Stop the vehicle immediately when the car starts to show down to prevent it from running out of control.

SAFETY PRECAUTIONS

Follow the outlined rules for safe radio control operation.

Avoid running the car in crowded area and near small children.

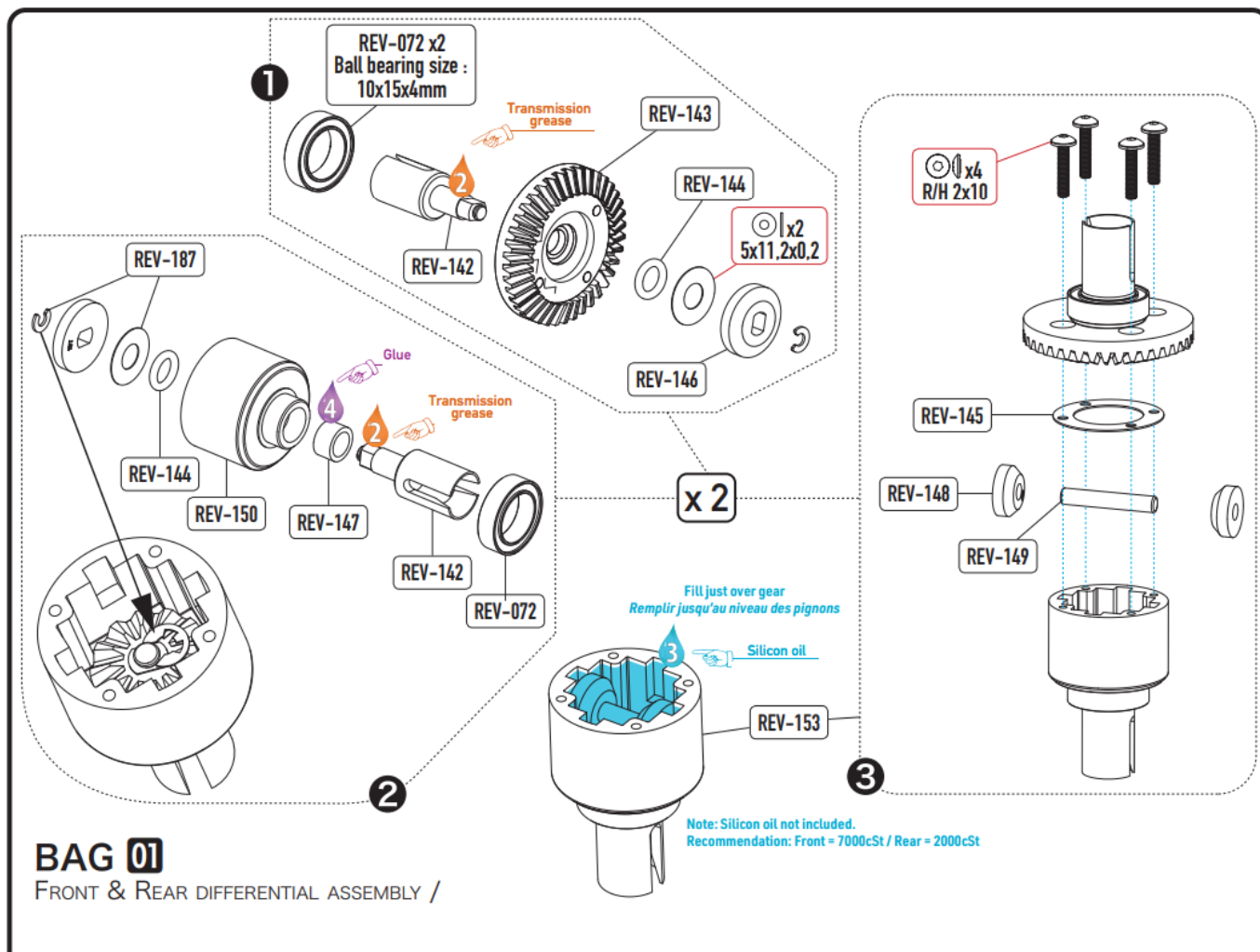
Make sure that no one else is using the same frequency in your running area. Using the same frequency at the same time can cause serious accidents, whether it's driving, flying or sailing.

Avoid running in standing water and rain. If R/C unit, motor, or battery get wet, clean and dry thoroughly in a dry shaded area.

R/C operating procedures

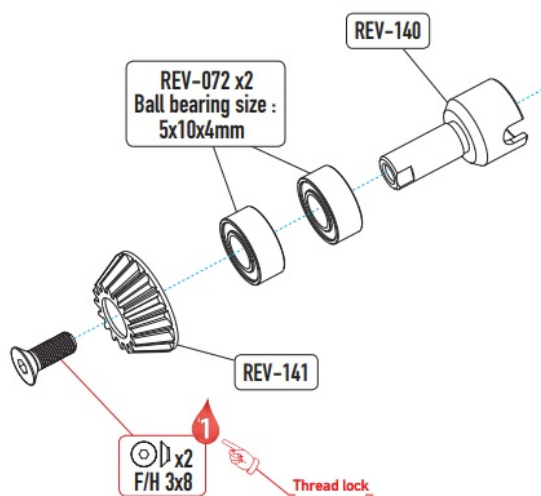
- ❶ Make sure the transmitter controls and trims are in neutral. Switch on transmitter.
- ❷ Switch on receiver.
- ❸ Inspect operation using transmitter before running.
- ❹ Adjust steering servo and trim so that the model runs straight with transmitter in neutral.
- ❺ Reverse sequence to shut down after running.
- ❻ Make sure to disconnect/remove all batteries.
- ❼ Completely remove sand, mud, dirt etc
- ❽ Store the car and batteries separately when not in use

FRONT & REAR DIFFERENTIAL ASSEMBLY

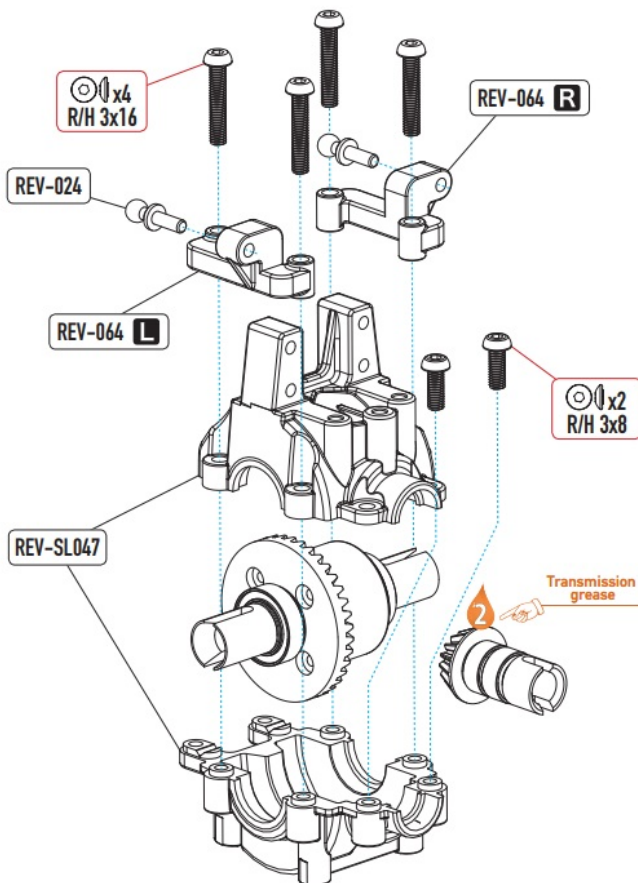


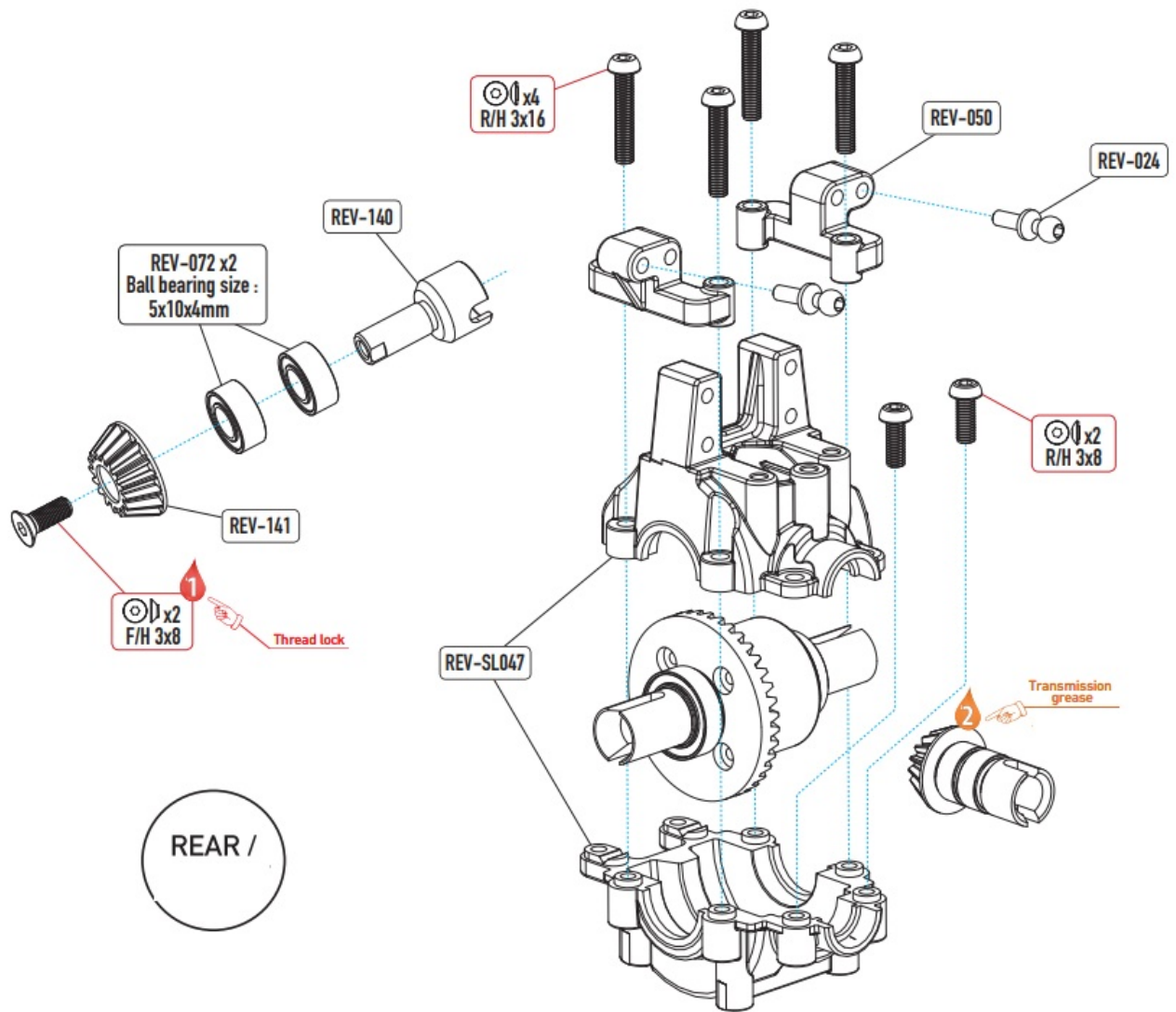
BAG 02

FRONT & REAR GEAR BOXES ASSEMBLY /



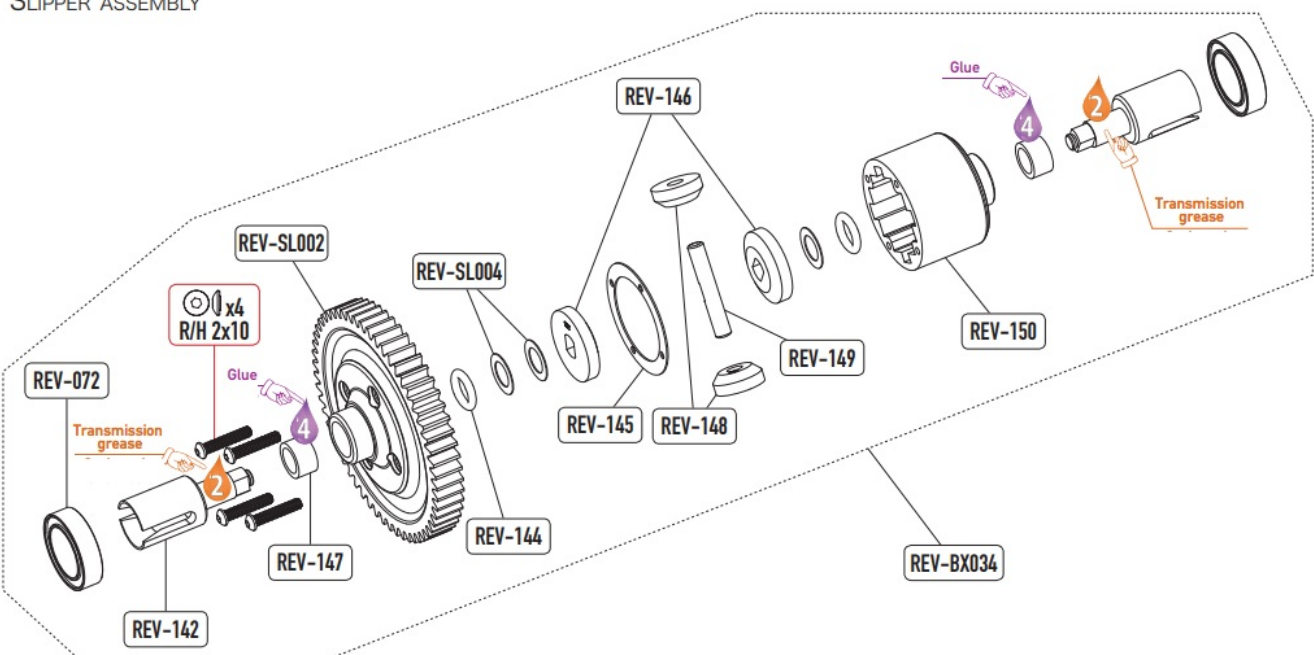
FRONT /
AVANT

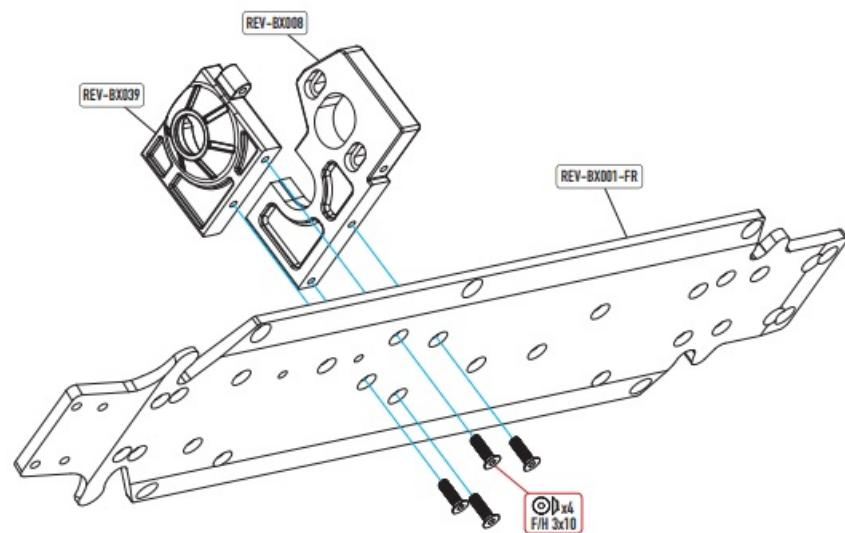




BAG 03

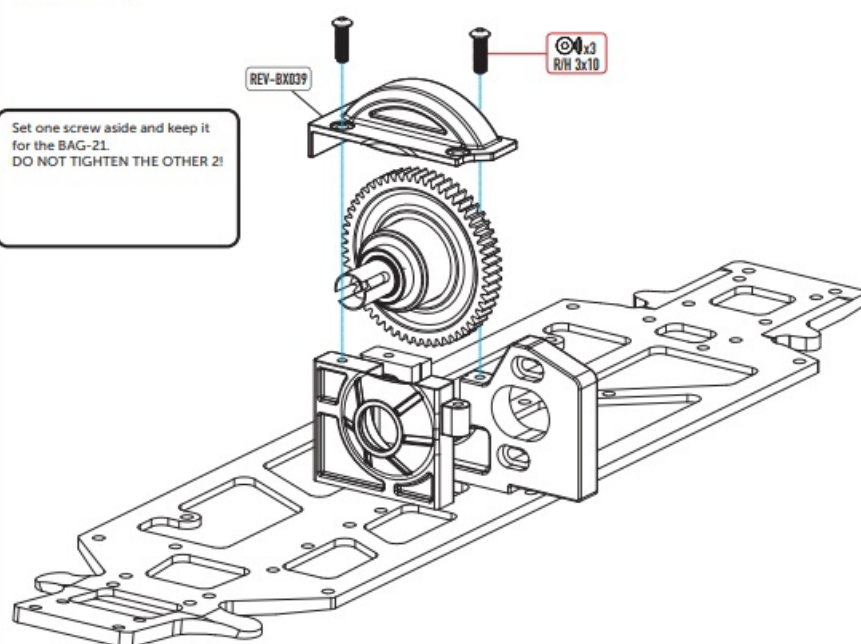
SLIPPER ASSEMBLY





BAG 04 SLIPPER MOUNT

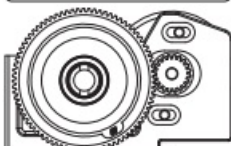
Set one screw aside and keep it
for the BAG-21.
DO NOT TIGHTEN THE OTHER 2!



MOTOR INSTALLATION /

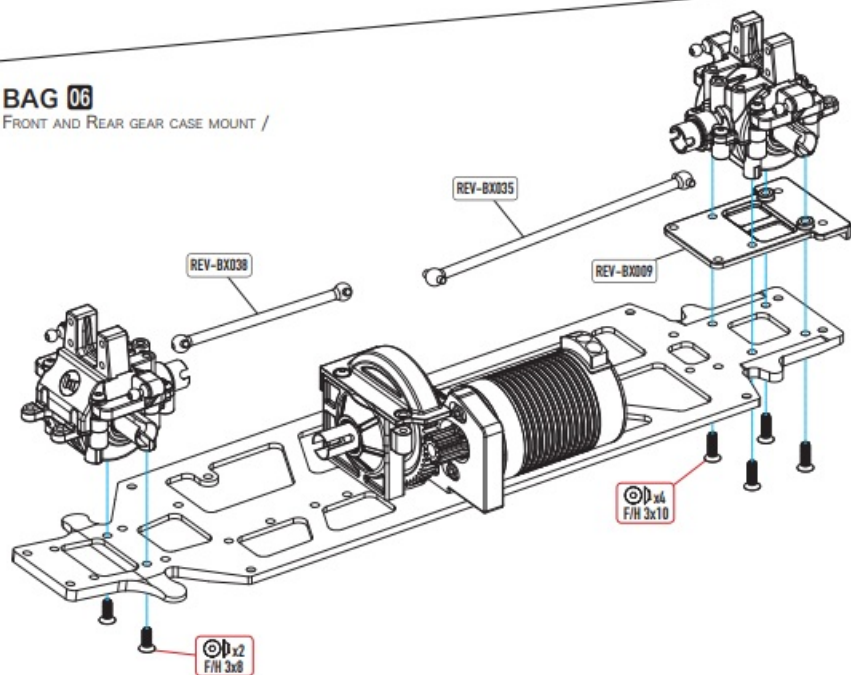


Hobbytech Kit BXR52		
Motor Kv	Motor Gear (T / Dents)	
	LiPo 2S (7.4V)	LiPo 3S (11.1V)
3500	14	11
4000	13	11
4500	13	10
5000	12	10
5500	12	9



Spur gear / pinion adjustment
Attention à bien régler votre entretoise

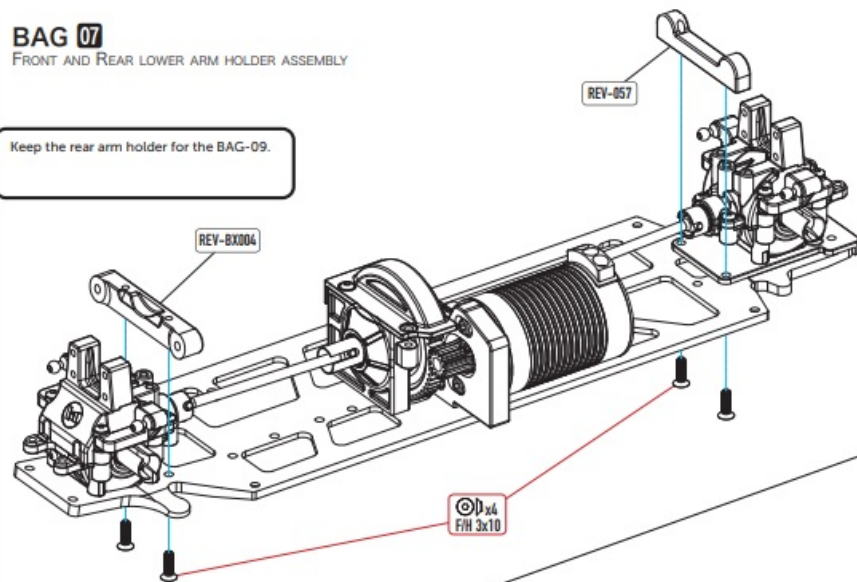
FRONT AND REAR GEAR CASE MOUNT /



BAG 07

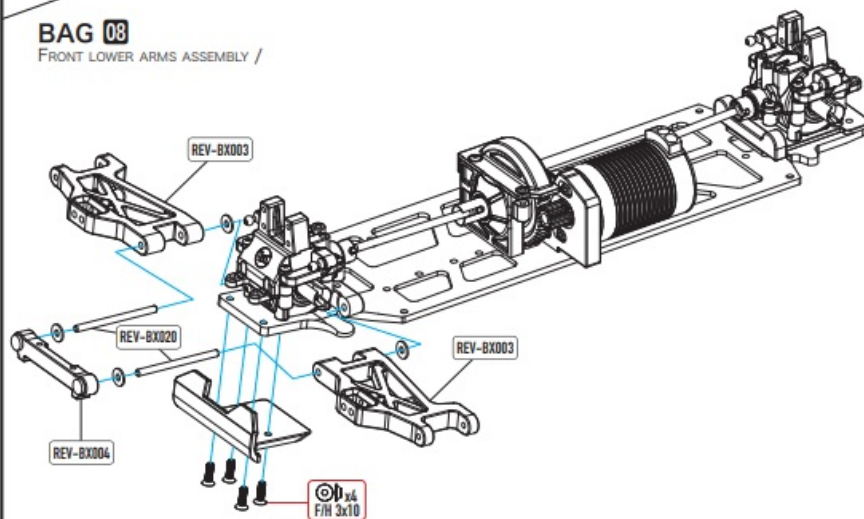
FRONT AND REAR LOWER ARM HOLDER ASSEMBLY

Keep the rear arm holder for the BAG-09.



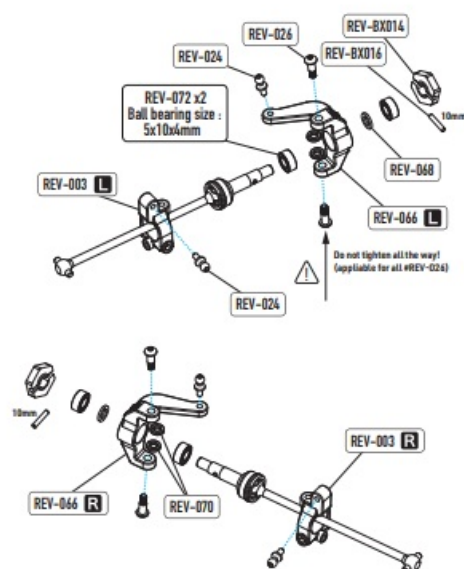
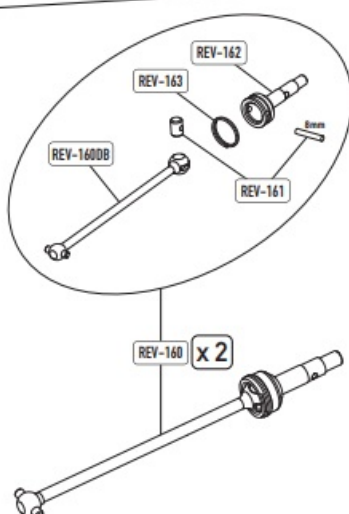
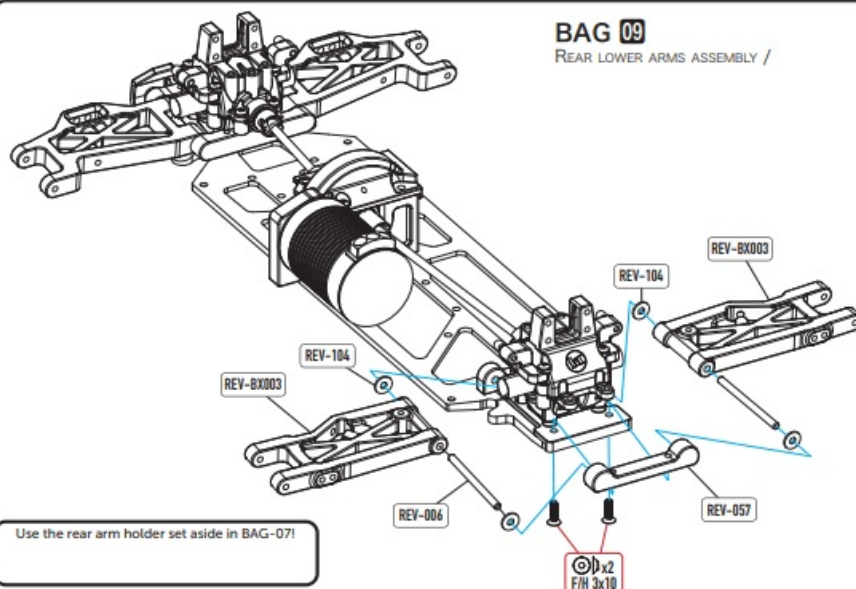
BAG 08

FRONT LOWER ARMS ASSEMBLY /

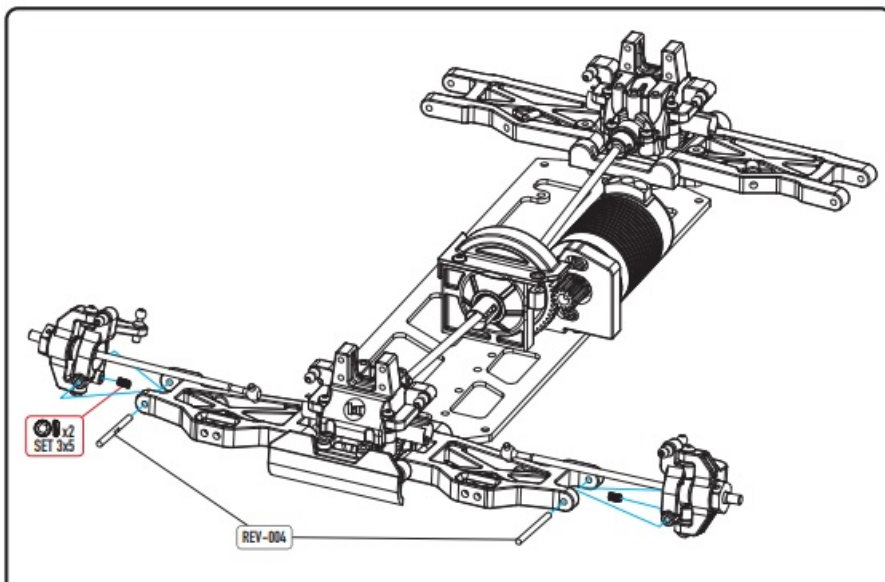


BAG 09

REAR LOWER ARMS ASSEMBLY /

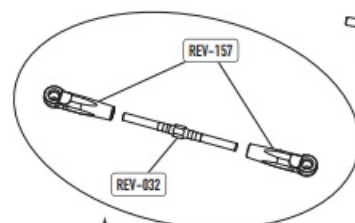
**BAG 10**

FRONT STEERING SYSTEM ASSEMBLY /

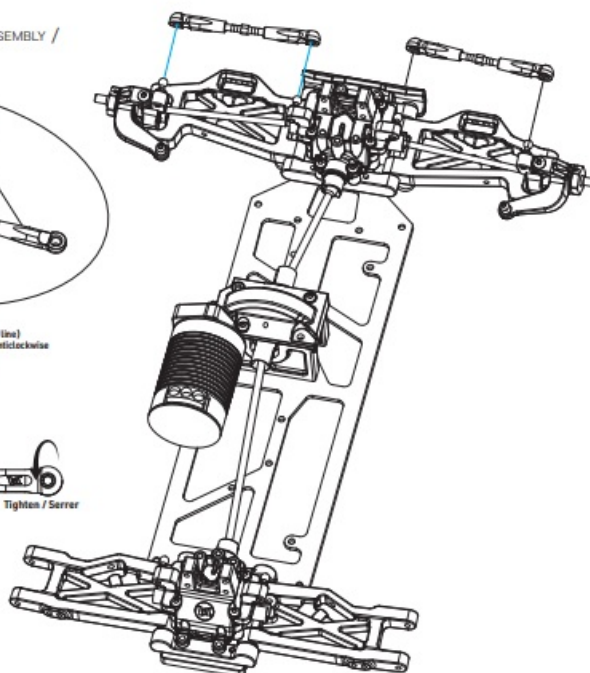


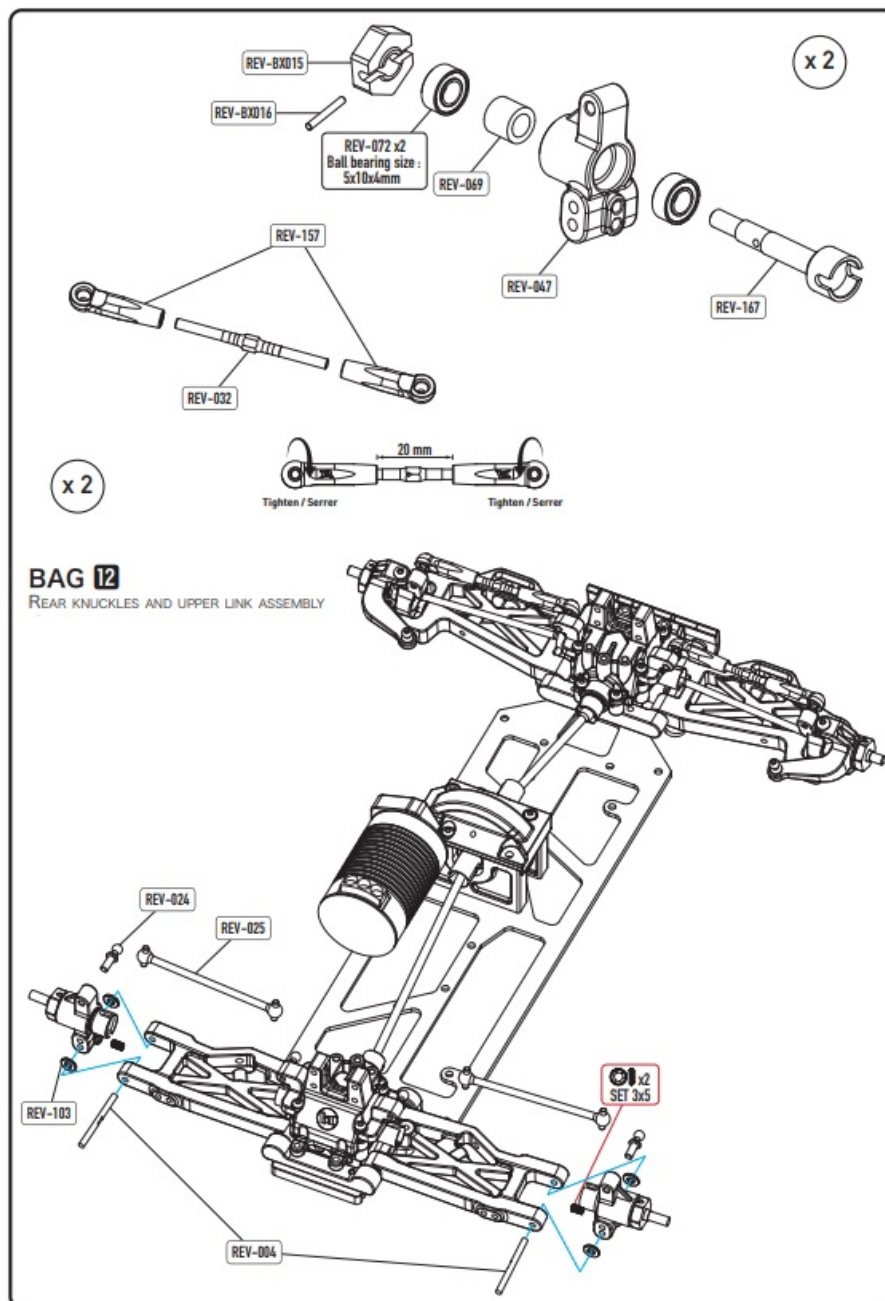
BAG II

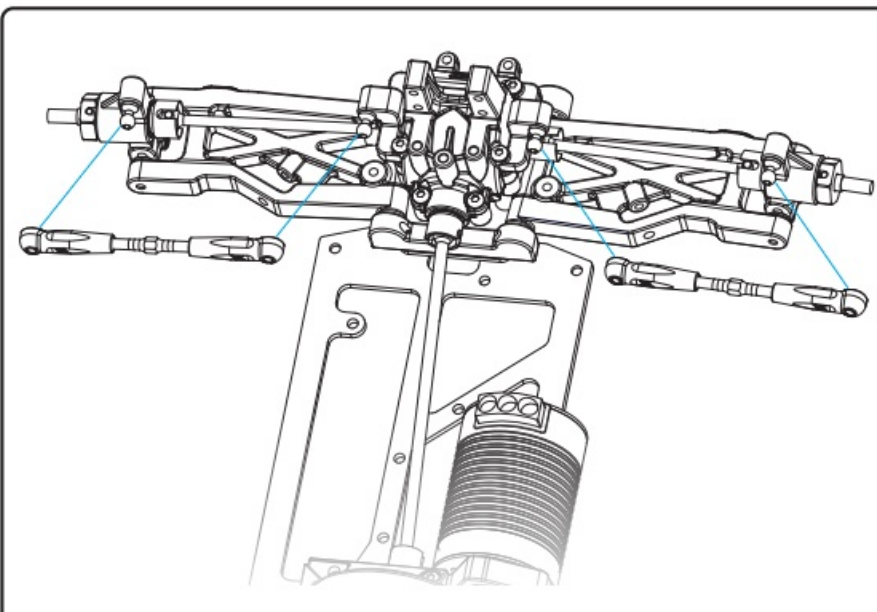
FRONT KNUCKLES AND UPPER LINK ASSEMBLY /



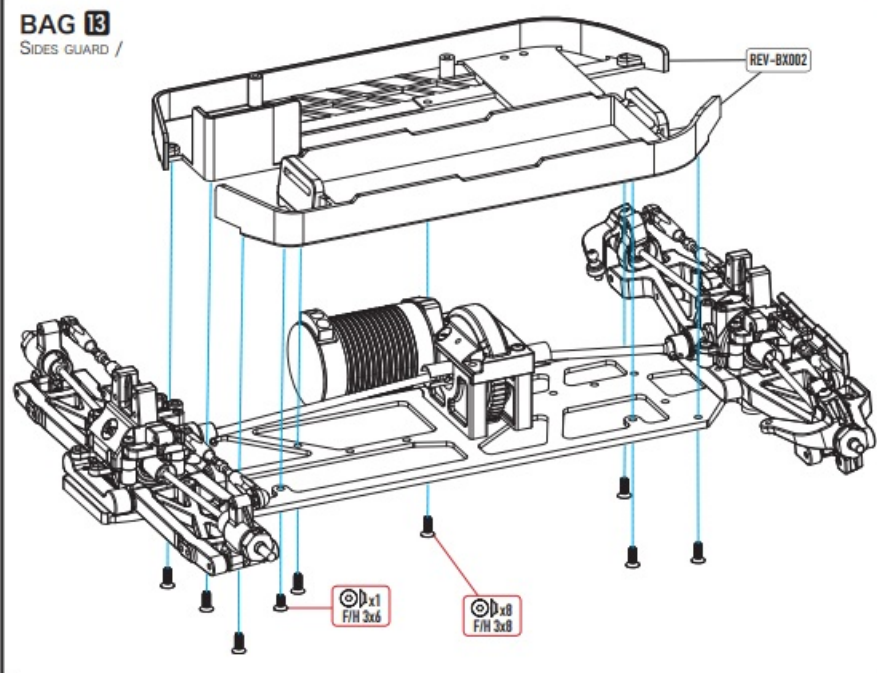
Turnbuckles!
Identify the center triangle (or line)
At the right of it's tip = tighten anticlockwise
At it's back = tighten clockwise



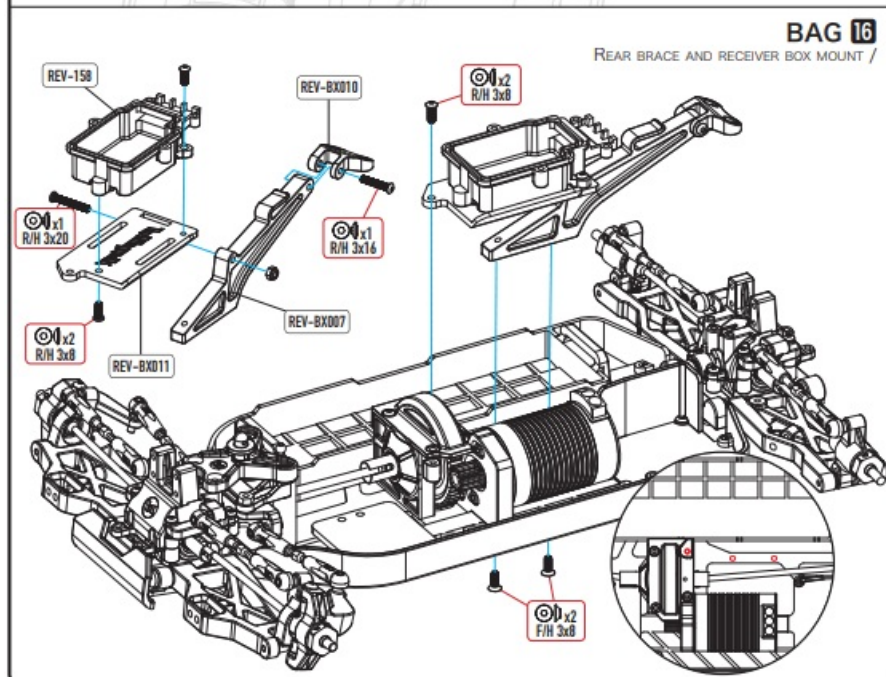
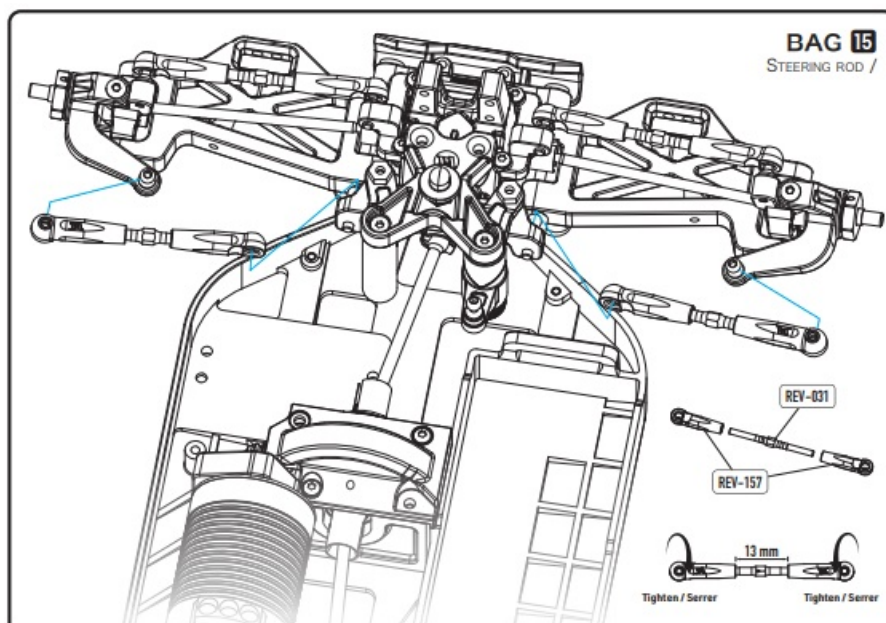




BAG 13
SIDES GUARD /

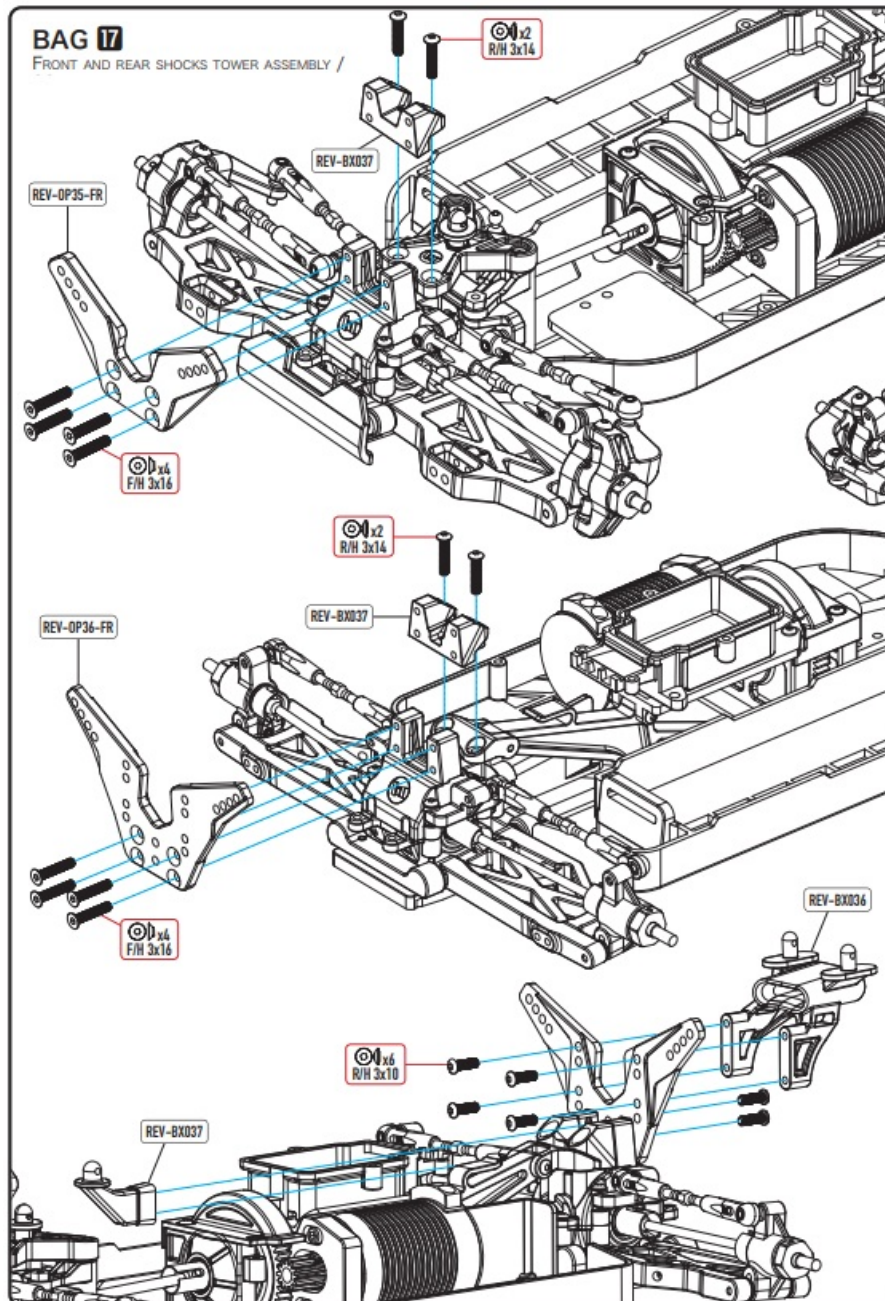


BAG 14
COMPLETING STEERING SYSTEM ASSEMBLY /



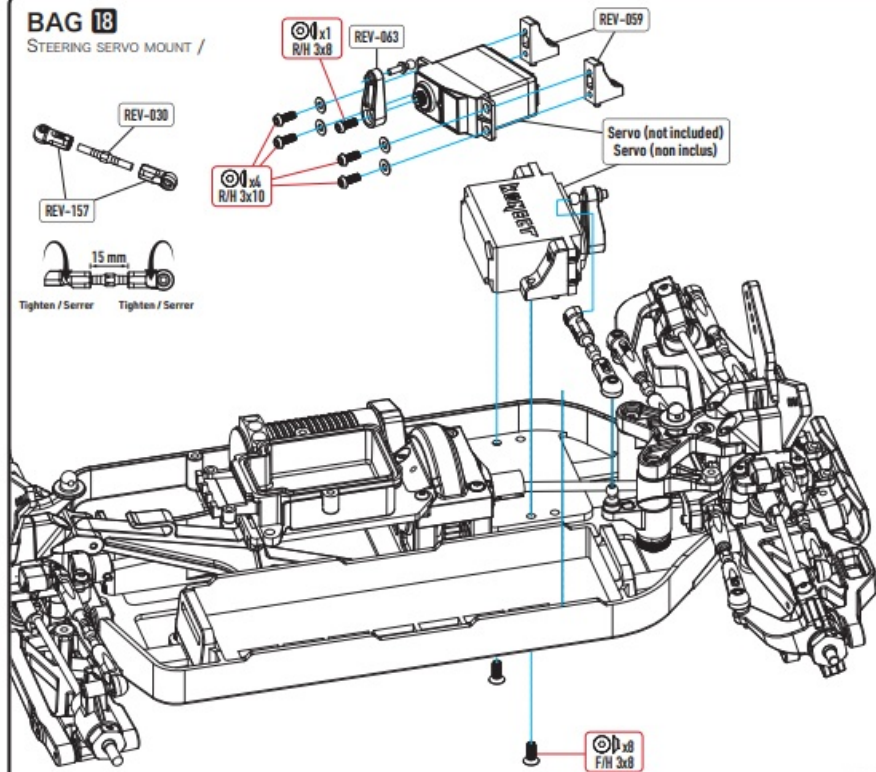
BAG 17

FRONT AND REAR SHOCKS TOWER ASSEMBLY /



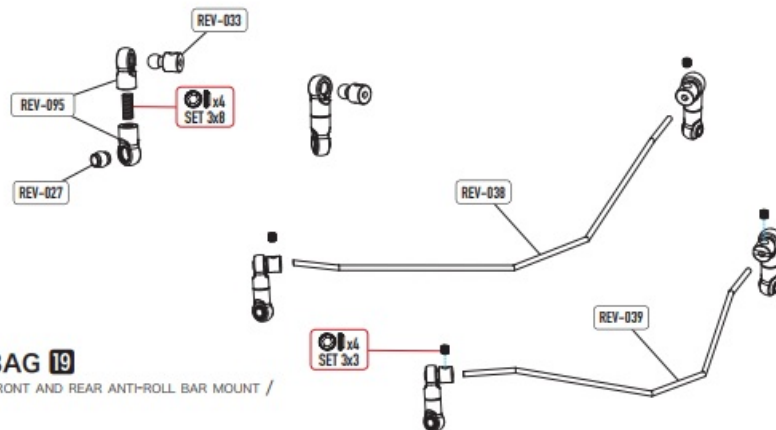
BAG 18

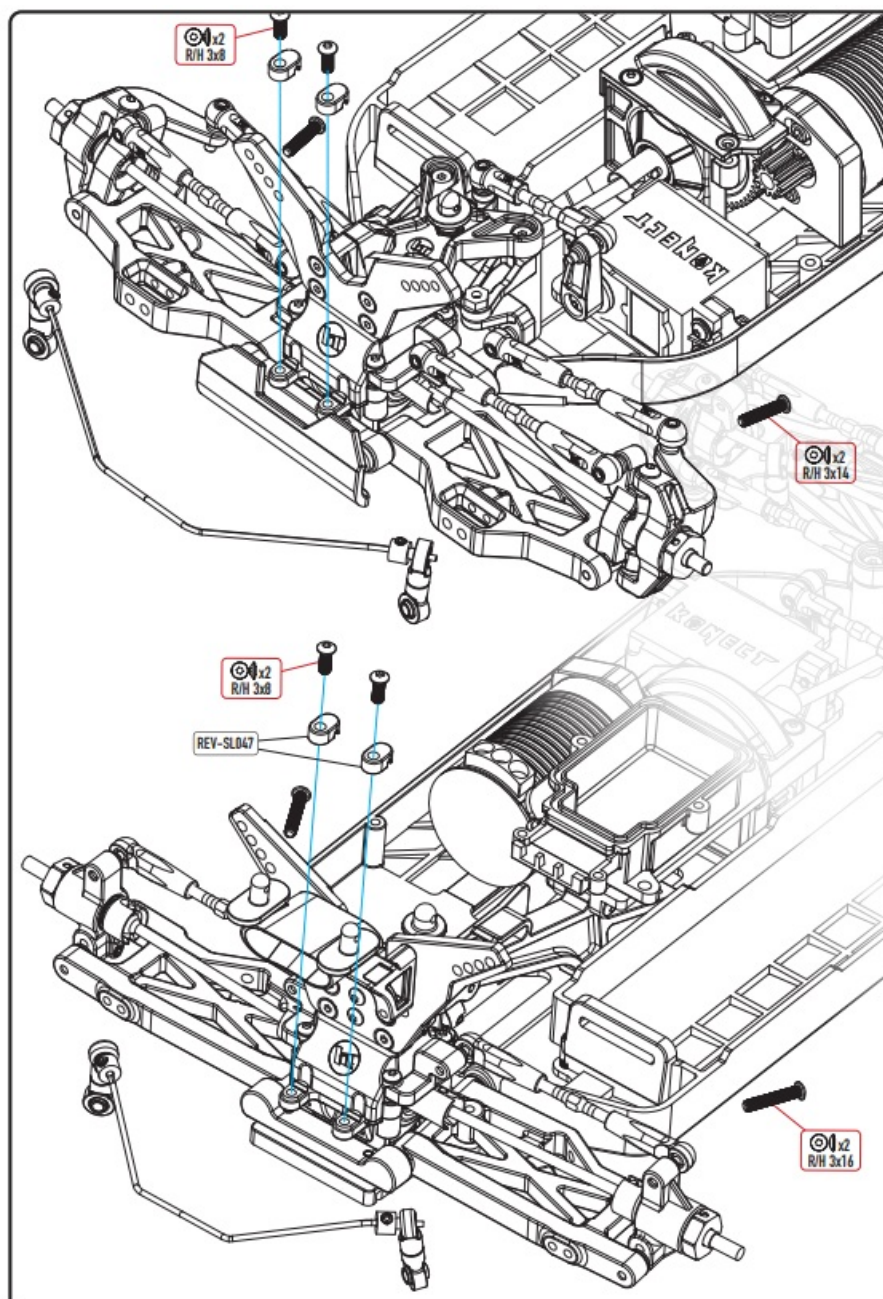
STEERING SERVO MOUNT /

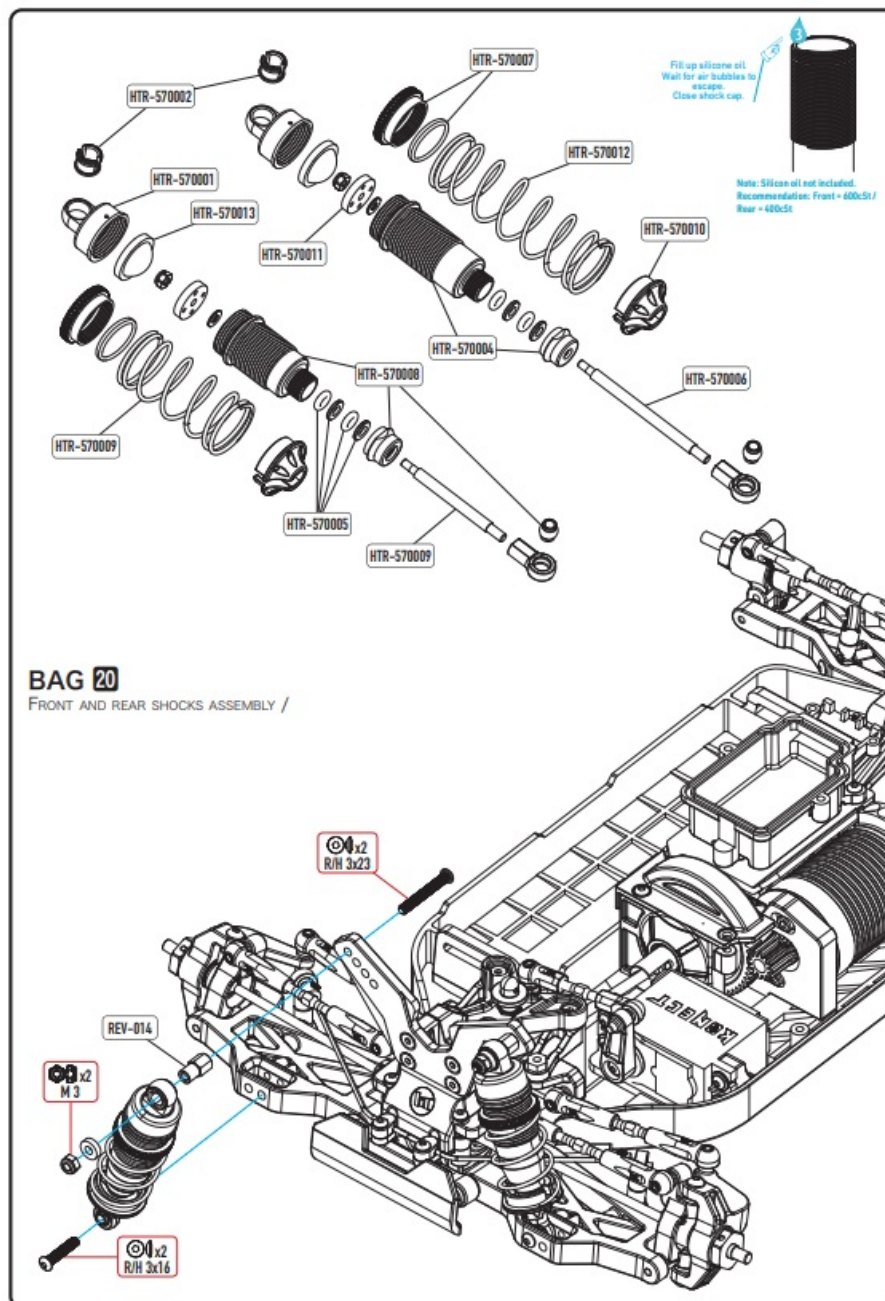


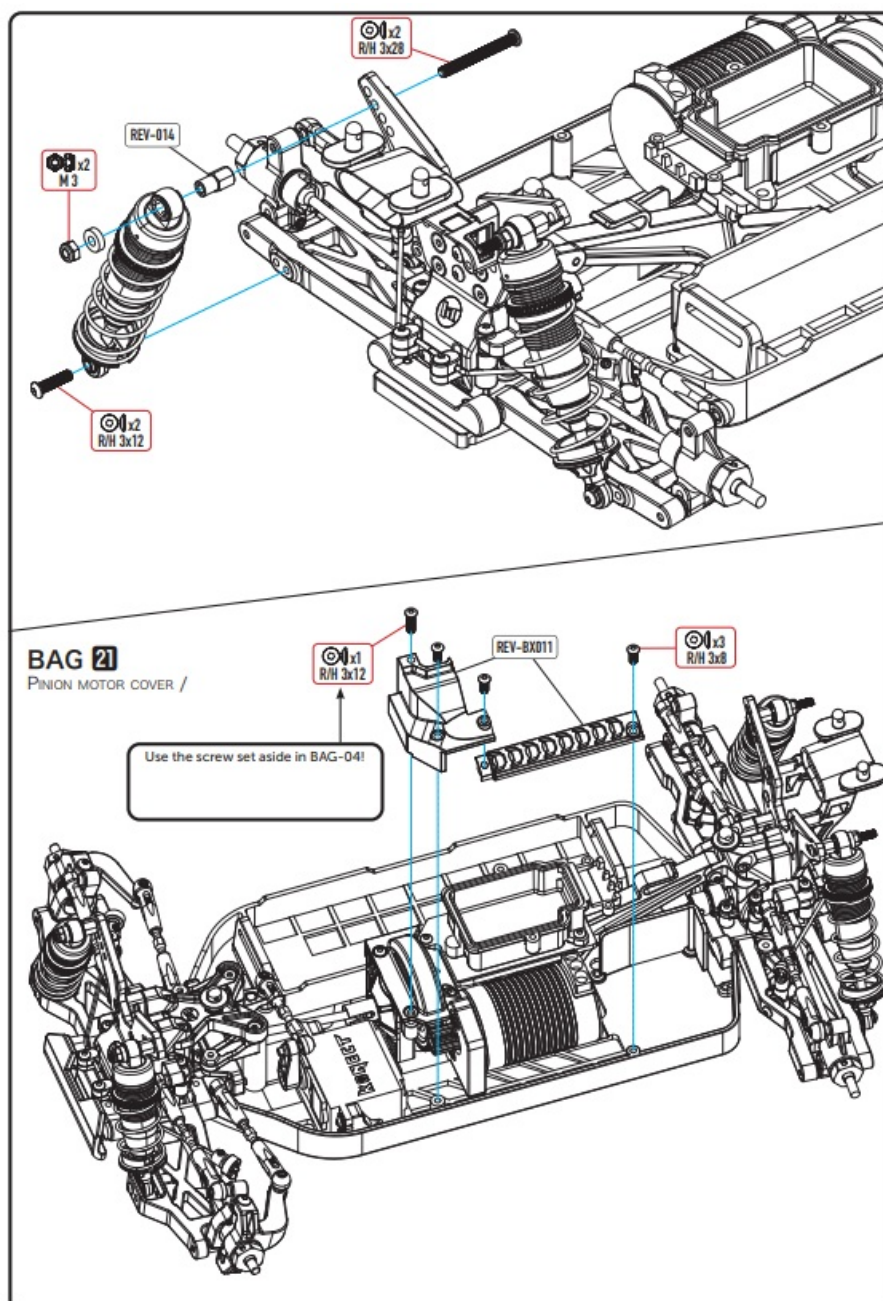
BAG 19

FRONT AND REAR ANTI-ROLL BAR MOUNT /

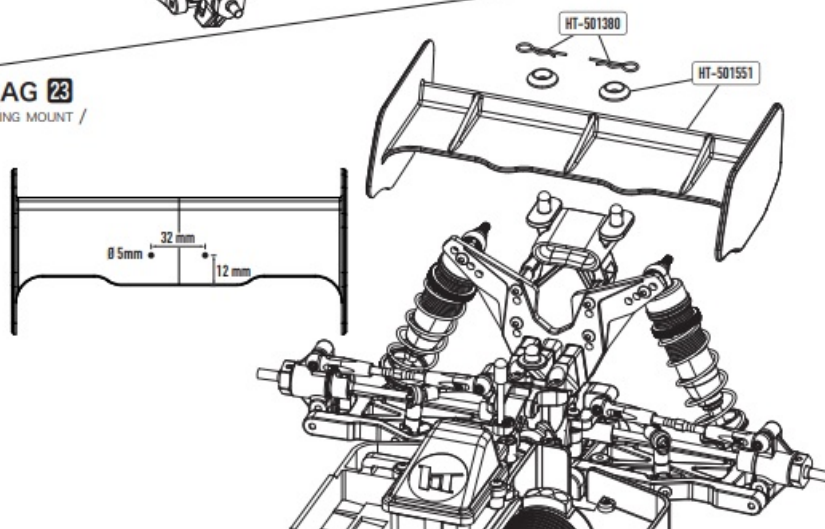
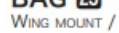


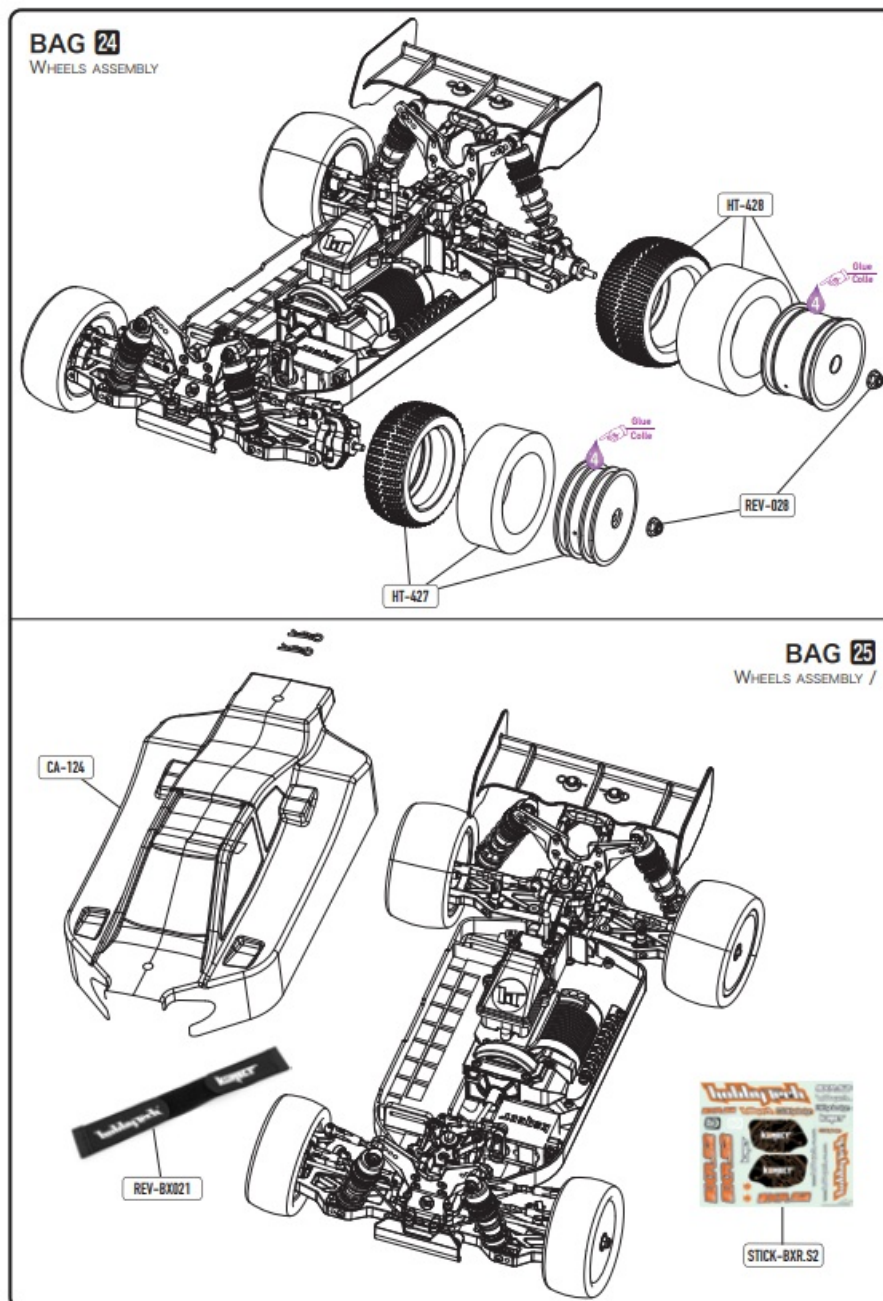






RECEIVER BOX COVER AND ESC MOUNT /





ITEM	DESIGNATION
CA-124	Buggy BXR.S1 Clear body
HT-427	Front Off road 1/10 tyres set mini pin
HT-428	Rear Off road 1/10 tyres set mini pin
HT-501380	Universal 1 / 10 body clips (10pcs)
HT-501551	1/10 off road black plastic wing
HTR570001	HTR 13 mm Big Bore Shocks Cap
HTR570002	HTR Shock cap bushing
HTR570003	42 mm shock shaft
HTR570004	HTR Shock body diam 13 L=44mm
HTR570005	HTR 13 mm Shocks Rebuilt Kit

HTR570006	52 mm shock shaft
HTR570007	HTR 13mm Shocks adjustable Screw + oring
HTR570008	HTR Shock body diam 13 L=34mm
HTR570009	45mm shock spring for HTR 13 mm
HTR570010	HTR 13mm Shock bottom holder ball ends
HTR570011	HTR 13 mm Shock piston 4 holes
HTR570012	65mm shock spring for HTR 13 mm
HTR570013	Racing HTR 13 mm Shocks Bladders (4)
HTR570014	HTR 13mm shocks balls
HTR570700	95mm BIG BORE 13mm Fully alum. adjustable shocks +3 springs (H/S/M)
HTR570720	95mm BIG BORE 13mm Fully alum. adjustable shocks +3 springs (H/S/M)
REV-003	L/R Front C-hub
REV-004	C-Hub Pin
REV-010	Lower suspension hinge
REV-014	Shock cap bushing
REV-015	Steering servo saver post
REV-016	Servo saver arm bushing
REV-024	Ball stud
REV-025	Rear drive shaft BX10
REV-026	C-Hub Screw
REV-027	Shock and stabilizer ball
REV-028	Wheel nut M4
REV-030	Turnbuckle M3x26
REV-031	Turnbuckle M3x35
REV-032	Turnbuckle M3x44
REV-033	Stabilizer ball (upper)
REV-034	Servo saver spring
REV-038	Front sway bar
REV-039	Rear sway bar
REV-047	Rear Hub set
REV-050	Rear tie-rod holder
REV-057	Rear to-in plate/Lower Susp arm
REV-059	Servo mount

REV-063	Servo horn arm
REV-064	Front tie-rod holder
REV-066	Front L/F steering block
REV-068	Front steering hub bushing
REV-069	Rear C-hub bushing
REV-070	C-hub washer
REV-072	Bearing set
REV-077	F/R body post
REV-078	Steering plate
REV-079	Steering set
REV-080	Servo saver pipe
REV-089	Servo saver nut
REV-095	Sway bar ball end set
REV-103	Rear hub washer
REV-104	Rear arm washer
REV-140	Pinion Diff Center F/R drive
REV-141	Pinion Diff Metal Bevel Gear 16T
REV-142	F/R diff drive cup set
REV-143	Differential bevel gear
REV-144	Differential O-Ring
REV-145	Differential Gaskets
REV-146	Diff Bevel gear 13T
REV-147	Diff case bushing
REV-148	10T Diff Bevel gear
REV-149	Diff. Bevel Gear Shaft
REV-150	Diff case
REV-151	BX10/ST10 Complety screw set
REV-153	Pinion Diff complety set
REV-157	New F/R/steering Ball Cups
REV-158	Watreproff receiver box
REV-160	2mm pin BX10 CVD front shaft
REV-160DB	2mm pin BX10 CVD front shaft axle
REV-161	2mm Pin Front CVD Drive Couple

REV-162	2mm Front CVD drive cup
REV-163	Security parts BX10 ST10 CVD
REV-167	2mm Rear drive cup
REV-178	32 Pitch Center Spur gear 56T
REV-186	Slipper repair parts
REV-187	Differential washers and clips kit
REV-BX001FR	Main chassis Hobbytech BXR.S2
REV-BX002	Side Guard BXR.S2/MT
REV-BX003	F/R lower suspension arm BXR.S2
REV-BX004	BXR.S2/MT Front to-in plate/Lower Susp arm
REV-BX005	BXR.S2 Front bumper
REV-BX006	BXR.S2/MT Plastic Front Plate
REV-BX007	BXR.S2/MT Rear Chassis Brace
REV-BX008	BXR.S1/MT Center diff and motor mount
REV-BX009	BXR.S2/MT rear diff case plate
REV-BX010	BXR.S2 Rear Brace Holder
REV-BX011	F/R lower suspension arm BXR.S1
REV-BX014	2mm pin Front wheel alum adaptator
REV-BX015	2mm pin Rear wheel alum adaptator
REV-BX016	Front/Rear drive pin 2×11.8mm
REV-BX020	BXR.S2/MT Front lower Susp pin 3x44mm
REV-BX021	Battery strap BXR.S2 / MT
REV-BX034	BXR-S2 completly center differential
REV-BX035	BXR-S2 center rear drive shaft
REV-BX036	BXR-S2 racing Wing mounts
REV-BX037	BXR-S2 gearbox plastics reinforcement kit
REV-BX038	BXR-S2 center front drive shaft
REV-BX039	BXR-S2 center differential mount parts
REV-OP32	BXR.S2 91 mm center rear drive shaft for 3s Slipper
REV-OP35FR	Front shock Holder 4mm Black OAS
REV-OP36FR	Rear shock Holder 4mm Black OAS
REV-SL002	32 Pitch Center Spur gear 56T spec SL
REV-SL004	SL completly center differential

REV-SL047	Pinion diff F/R Gearbox completely set for SL
STICK-BXR.S2	Hobbytech BXR.S2 buggy stickers sheet

OPTION PARTS



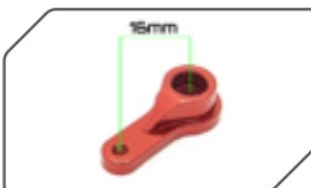
CA-123

Red buggy prepainted body



CA-125

Orange buggy prepainted body



HT-510035-RD

Racing short servo horn 17mm in aluminium RED 25T.



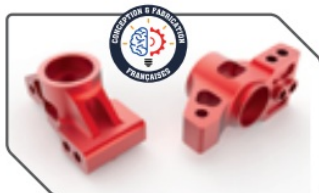
REV-OP04-FR

Aluminium front steering in alu. OAS (made in France)



REV-OP05-FR

Front C-Hub in alu. OAS (made in France)



REV-OP06

Aluminium rear C-Hub



REV-OP09-FR

Aluminium Rear Toe in Plate 2.5 in alu. OAS (made in France)



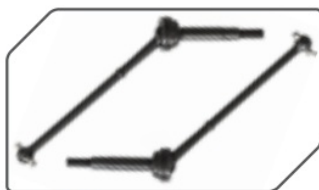
REV-OP10-FR

Rear Lower Sus. on Arm Holder in alu. OAS (made in France)



REV-OP11

Aluminium Rear Turnbuckle Holder (L R)



REV-OP12-NEW

BX10 Survolt/Revolt Rear CVD



REV-OP14

Aluminium Front Turnbuckle Holder(L R)



REV-OP17

Aluminium Servo saver set



REV-OP18

Aluminium Steering Plate



REV-OP19

Gear Diff Conversion set



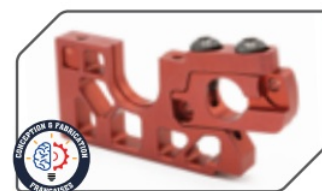
REV-OP26-FR

Front aluminium plate front diff case in alu. OAS (made in France)



REV-OP27-FR

Rear aluminium plate front diff case in alu. OAS (made in France)



REV-OP28-FR

Rear aluminium plate front diff case in alu. OAS (made in France)



REV-OP33

Extra strong Center F/R drive joint



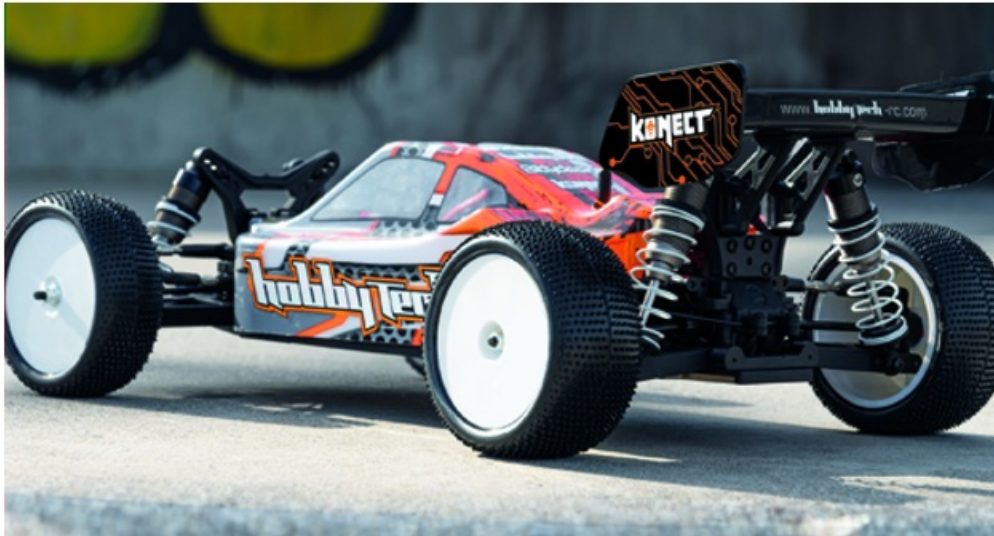
REV-OP34

Extra strong lightweight F/R Diff Drive Joint



ROG-OP02

56T Metal Center Spur gear (32 Pitch)



WWW.HOBBYTECH-RC.COM
info@hobbytech-rc.com General information

Specification are subject to change without notice.
Photograph shows model after assembly and painting.

Documents / Resources



[hobbytech 8.BXR-S2.KIT Combo Brushless Buggy](#) [pdf] Instruction Manual
8.BXR-S2.KIT Combo Brushless Buggy, 8.BXR-S2.KIT, Combo Brushless Buggy, Brushless Buggy, Buggy

References

- [User Manual](#)

[Manuals+](#), [Privacy Policy](#)

This website is an independent publication and is neither affiliated with nor endorsed by any of the trademark owners. The "Bluetooth®" word mark and logos are registered trademarks owned by Bluetooth SIG, Inc. The "Wi-Fi®" word mark and logos are registered trademarks owned by the Wi-Fi Alliance. Any use of these marks on this website does not imply any affiliation with or endorsement.