



i31 Open Face Helmet



HJC i31 Open Face Helmet Owner's Manual

[Home](#) » [HJC](#) » HJC i31 Open Face Helmet Owner's Manual 

Contents

- [1 HJC i31 Open Face Helmet](#)
- [2 Specifications](#)
- [3 Product Usage Instructions](#)
- [4 Important Safety Information](#)
- [5 Selecting the Right Helmet](#)
- [6 PARTS](#)
- [7 Using Your Helmet Correctly](#)
- [8 Maintaining Your Helmet Correctly](#)
- [9 Warranty](#)
- [10 FAQ](#)
- [11 Documents / Resources](#)
 - [11.1 References](#)



HJC i31 Open Face Helmet



Specifications

- Advanced Polycarbonate Compound (APC)
- Advanced Channeling Ventilation System
- Pinlock ready HJ-43 visor(shield)
- Provides 99% UV protection
- Removable and washable interior
- HJ-V12 Internal sunshield
- Interchangeable cheek pads throughout all sizes Micro buckle
- ECE R22.06 APPROVED

Product Usage Instructions

• **Selecting the Right Helmet**

This helmet provides good protection but may not offer as much coverage as a full-face helmet. For increased head coverage, consider purchasing a helmet with greater coverage.

• **Helmet Size Selection**

- Measure your head circumference about one inch (2.5cm) above your eyebrows.
- Refer to the sizing chart to find the helmet size that matches your head measurement.
- If your head size falls between two sizes, try on the larger size first and then the smaller size to ensure the best fit.

• **Proper Fit**

Ensure the helmet fits snugly on your head without being too tight. It should not move or shift while wearing it.

• **Helmet Care**

Regularly clean the interior and exterior of the helmet according to the manufacturer's instructions. Replace any damaged parts promptly.

• Sunshield Usage

The HJ-V12 internal sunshield can be activated as needed for sun protection. Follow the user manual for instructions on how to operate it.

• Visor Maintenance

Keep the visor clean and free of scratches for optimal visibility. Use recommended cleaning products and avoid abrasive materials.

WARNING

For your safety, it is important that you completely read the owner's manual and all warning labels.



- Advanced Polycarbonate Compound (APC)



- Advanced Channeling Ventilation System



- Pinlock ready HJ-43 visor(shield)



- Provides 99% UV protection



- Removable and washable interior



- HJ-V12 Internal sunshield



- Interchangeable cheek pads throughout all sizes



- Micro buckle



- ECE R22.06 APPROVED

Please visit www.hjchelmets.com for more information about HJC helmets.

WARNING

For your safety, it is important that you completely read the owner's manual and all warning labels.

Important Safety Information

WARNING

The instructions in this manual are designed to help you select the right helmet, wear it properly, take care of it, and know when to replace it. Failure to follow these instructions may increase your risk of serious injury or death in an accident.

In order to get the most protection possible from your helmet, you should always do the following:

- Wearing your helmet when you ride;
- Handle your helmet carefully to avoid accidental damage; and
- Ride safely – do not take risks because you are wearing a helmet.

Although your HJC helmet is designed to reduce or prevent some injuries when worn, no helmet can protect you from all possible or foreseeable impacts. For example, your helmet cannot protect you from spinal or neck injuries. In addition, there is no guarantee that your helmet will PREVENT injuries to the area of your head that is covered. A low speed accident may even result in serious injury or death.

Selecting the Right Helmet

WARNING

- This helmet does not provide as much coverage or protection as a full face helmet. You can get more protection by purchasing a helmet with greater head coverage.
- Never buy a used helmet or borrow someone else's helmet. Over time the protective foam in helmets will adjust to the contours of a user's head. A used or borrowed helmet may not offer as much protection as a new helmet.

Wearing the wrong size helmet can increase your risk of serious injury or death in an accident. A helmet that is too large for your head may be dislodged or knocked off in an accident. To select the right size helmet for your head, follow these instructions:

1. Measure your head. Wrap a tape measure around your head about one inch (2.5cm) above your eyebrows.
2. Use the sizing chart to select the helmet size that corresponds most closely to your head measurement. If your head size falls between two helmet sizes, try on the larger helmet first and then the smaller size.

Size Chart

The size chart is only for reference. Always try the helmet on and follow this manual's instructions for a proper fit.

Size	Hat Size	Centimeters	Inches
XS	6 5/8 – 6 3/4	54 – 55	20 7/8 – 21 1/4
S	6 7/8 – 7	55 – 56	21 5/8 – 22
M	7 1/8 – 7 1/4	57 – 58	22 1/2 – 22 7/8
L	7 3/8 – 7 1/2	58 – 59	23 1/4 – 23 5/8
XL	7 5/8 – 7 3/4	60 – 61	24 – 24 3/8
2XL	7 7/8 – 8	62 – 63	24 3/4 – 25 1/4

3. Try on the helmet by grasping both chin straps to pull the helmet completely onto your head, ensuring that the top of your head is in contact with the top of the helmet interior.
4. **Check for a proper fit. To make sure your helmet is the right size, check that :**
 - The helmet inner lining fits snugly around your head.
 - The top pad presses firmly on your head.
 - The cheek pads contact your cheeks.

- There is no space around your brow under the inner lining. Test this by trying to insert your fingers. If the helmet does not fit snugly, try on a smaller size.

5. Check your field of vision when trying on a helmet. Some helmets may obstruct or block your vision when looking left, right, up, or down.

WARNING: Always make sure you can see well enough to safely operate your motorcycle.

6. Test the helmet fit by placing your hands on each side of the helmet. While holding your head as motionless as possible, try rotating your helmet from left to right then up and down. If you can feel the helmet padding sliding on your head, it is too big, try a size smaller. You should feel the helmet move the skin on your head and face as you try to move the helmet.



7. Fasten the retention system (chin strap) as tight as possible under your jaw without causing pain. There must be no slack in the strap, and the strap must be tight up against your jaw. See page 8.

8. Test the retention system (chin strap)

- Put your hands on the back of the helmet and try to push the helmet off by rotating it forward.
- Put your hands on the front of the helmet above your forehead (or on the chin guard) and try to push the helmet off by rotating backward.

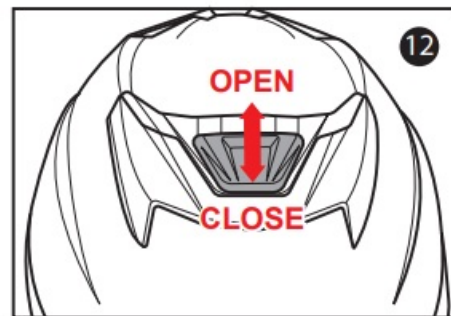
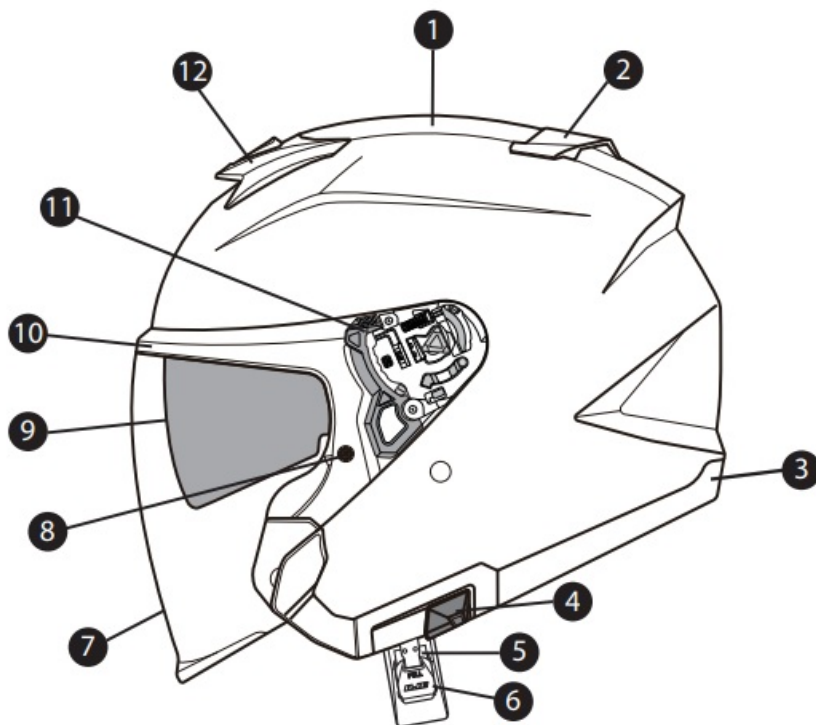


WARNING

If helmet comes off or shifts over your eyes, try another size or another model or brand. You must be able to see the edge in your upper field of vision.

Repeat steps 3 through 8 until you find a helmet that fits your head snugly and securely.

PARTS



1. Outer Shell
2. Rear Venturi Exhausts
3. Rubber Edge Trim
4. Sun shield Lever
5. Chin Strap
6. Micro Buckle
7. HJ-43 Visor(Shield)
8. Pinlock Pins
9. HJ-V12 Sun shield
10. Eyeport Gasket
11. Visor(Shield) Ratchet
12. Top Front Vent

Using Your Helmet Correctly

WARNING

To reduce the risk of serious injury or death and to help prevent damage to your helmet :

- Never adjust your helmet accessories while riding – Only make helmet adjustments when stopped.
- Never drop your helmet – Dropping your helmet may crack the shell or damage the protective foam. The damage may not be visible. Your helmet is only designed for ONE impact. Refer to “Helmet Replacement” (p. 13) for more information on what to do after a helmet has been dropped.
- Never wear anything between your head and your helmet – this may reduce the effectiveness of your helmet.
- Never hang or hook your helmet on anything including mirror stalks or sissy bars – Doing so may cause damage to the helmet protective foam or liner.
- Never use insect repellent on or around your helmet – insect repellent may damage your helmet’s visor(shield), shell, protective foam, or other components.

- Never expose helmet to gasoline or gasoline fumes – Gasoline may damage your helmet's visor(shield), shell, protective foam, or other components.
- Never use a dark or tinted face visor(shield) at night or in low visibility conditions. If you have any questions on what other substances may damage your helmet, please contact us.
- Always wear eye protection – If you are not using a helmet with a face visor(shield), always wear eye protection when riding. Always lock your face visor(shield) in place when you are riding.
- Always be alert for sounds – Your helmet may impair your hearing. However, your helmet is not a form of hearing protection.
- Always store your helmet in its helmet bag when not in use to help reduce accidental surface damage.

WARNING

To reduce the risk of serious injury or death, always use your helmet correctly.

Inspect your helmet

To ensure that your helmet is in the best condition to maximize your protection, always inspect your helmet for damage before riding :

- Check the visor(shield) and visor(shield) ratchet – re-tighten visor(shield) ratchet screws if necessary. Be sure not to overtighten any screws. Plastic base plate screws can break and plastic screws can strip the screw sleeves if over- tightened.
- Check for helmet damage. If your helmet is damaged or cracked, stop using it immediately. See “Helmet Replacement” (p. 13) section for further information. If your helmet has been dropped, you may not be able to see the damage.
- Check for worn or damaged parts. Plastic components may wear out over time. If you find worn or damaged parts, replace them or purchase a new helmet. See “Replacement Parts” (p. 13) for information on parts replacement.

WARNING

If parts fall off while riding, your vision may be blocked which could cause an accident.

- Check the retention system (chin strap) for damage. If it is frayed or ripped, replace the helmet.
- Check that all pads are in place. Both of the cheek pads and the crown pads must be in place.

Check Your Face Visor(Shield)

- If your face visor(shield) is scratched or damaged it may reduce the visibility-replace if necessary.
- Always make sure you can see well enough to safely operate your motorcycle.

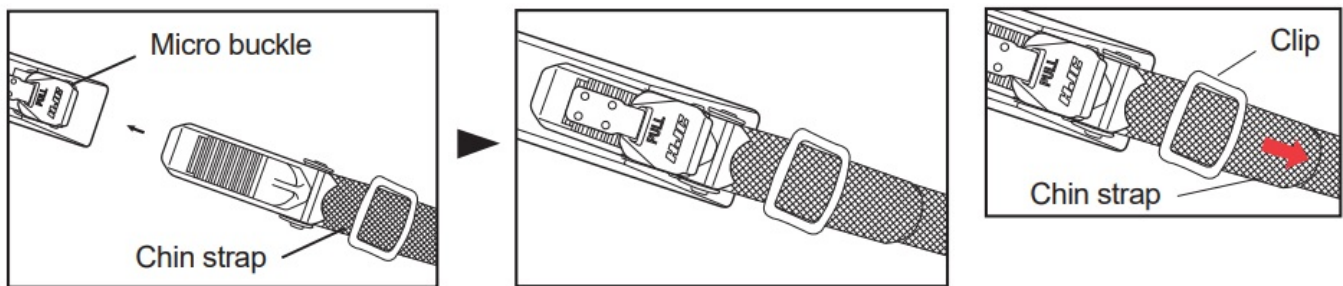
Fasten the Retention System

Fasten the retention system (chin strap) as tight as possible under your jaw without causing pain. There must be no slack in the strap, and the strap must be snug up against your jaw. If the retention system is not tight, your helmet may become dislodged or knocked off in an accident.

WARNING

Do not rely on the snap to secure the helmet. The snap is provided only to prevent the strap from flapping in the air.

Fasten the retention system only in the following manner: Micro Buckle



Hold the clip and pull the chin strap as directed above to adjust the fit.

Maintaining Your Helmet Correctly

Shell Cleaning

- Do not apply paint, stickers, petrol, or other solvents to this helmet.
- Only use approved methods to clean the helmet. Using other unapproved chemicals or methods may damage the helmet shell or lining. A damaged helmet may increase your risk of serious injury or death in an accident.
- Glossy Finish. HJC recommends cleaning your helmet with products designed for automotive cleaning and polishing. All HJC helmets are finished with an automotive type base coat/clear coat finish. Rubbing compounds can be used for deep cleaning to remove many scratches and scuffs. Follow the product's instructions diligently. Over polishing with rubbing compounds can cause light abrasions which may dull the finish of your helmet. Stickers and decals will leave adhesive residue when removed. To remove the adhesive residue, use alcohol swabs. Be certain to immediately wipe away the excess liquid and clean the area with soap and water once the adhesive residue is removed. Do not use excessive pressure while rubbing when attempting to remove the adhesive residue, instead use multiple light treatments.
- **Non-Glossy Finish.** For our flat finish (non-glossy) helmets, we recommend using warm water and mild soap. Use multiple treatments for heavier dirt. Do not use excessive pressure or rubbing compounds while cleaning the surface as a "glossy" effect could be created, running the flat finish appearance.

1. Please clean helmets from dust, bugs or grass within one day.

Cleaning progress

1. Clean the helmet with warm water and cloth.
2. If there are any remains left, dry the helmet and remove any remaining contamination with rubber eraser.
Do not use any alcohol or thinner to clean the helmet because they may damage the paint.
2. Avoid oil contamination as it is extremely difficult to clean once exposed.

Interior Cleaning

Although we recommend changing a helmet every 3 to 5 years, the accumulation of sweat, humidity and dirt can deteriorate the fabric and stitching and this may cause odor. To wash HJC removable pads, hand washing is recommended. If you use a washing machine, please use on "Delicate" setting and air dry. HJC do not recommend using spin-dryer for the interior pads as it may damage the material. For non-removable interiors, HJC recommends using anti-bacteria and mildew eliminating products such as "Helmet Fresh." or other similar product.

Vent Cleaning

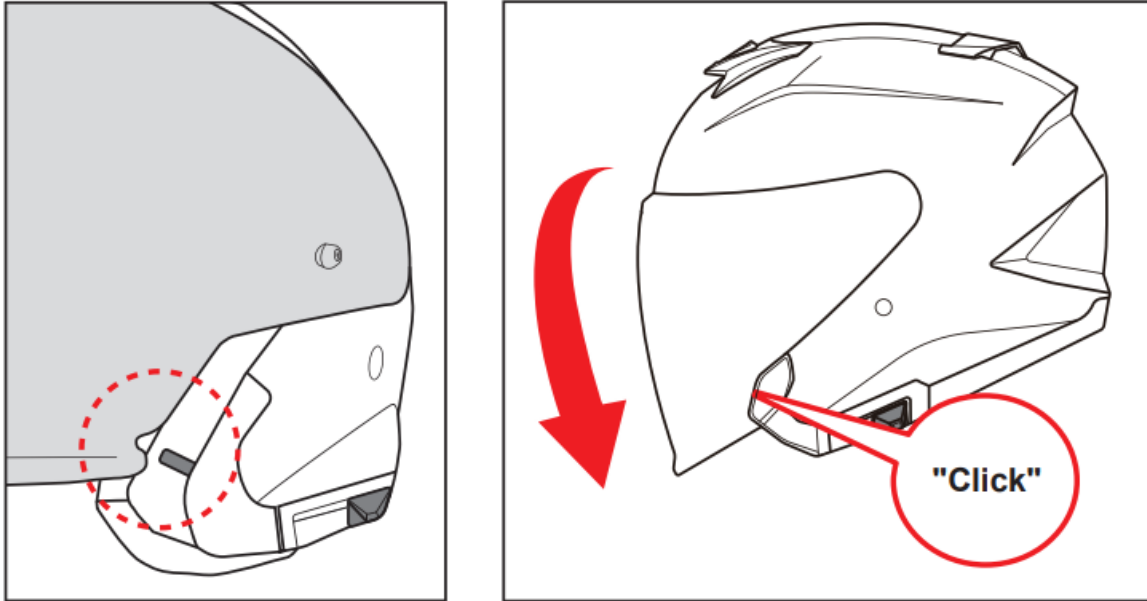
Dirt and debris can find its way into venting of your HJC helmet. Compressed air cans used for cleaning computer keyboards may be used to blow the debris from the ventilation system. It is recommended that you remove any removable pads before doing this process.

Visor(Shield) Cleaning

The helmet visor(shield) is made of polycarbonate materials with a polyurethane abrasion resistance coating. It should be cleaned using mild soap and warm water. Never use hot water, salt water, benzene, thinner, gasoline or any other harsh agents. Additionally, the use of commercial visor(shield) cleaners is not recommended because they may affect the quality of the visor(shield) material. Treat carefully when cleaning the visor(shield) to preserve the abrasion resistant coating. When deep scratches are visible, it is highly recommended that the helmet visor(shield) be replaced. Tinted visors (shield) are for "Day time use only" and are not suitable for use at night or in conditions of poor visibility.

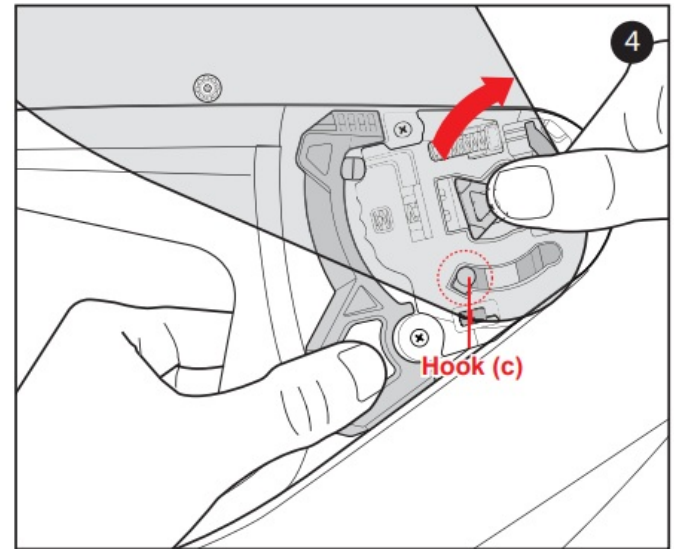
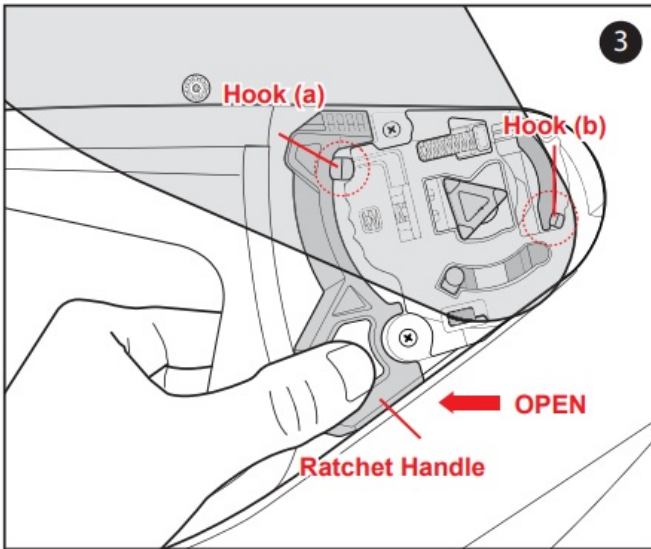
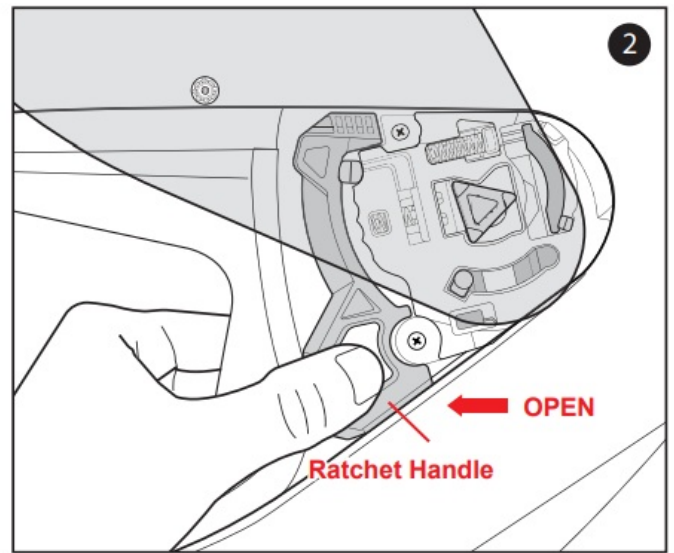
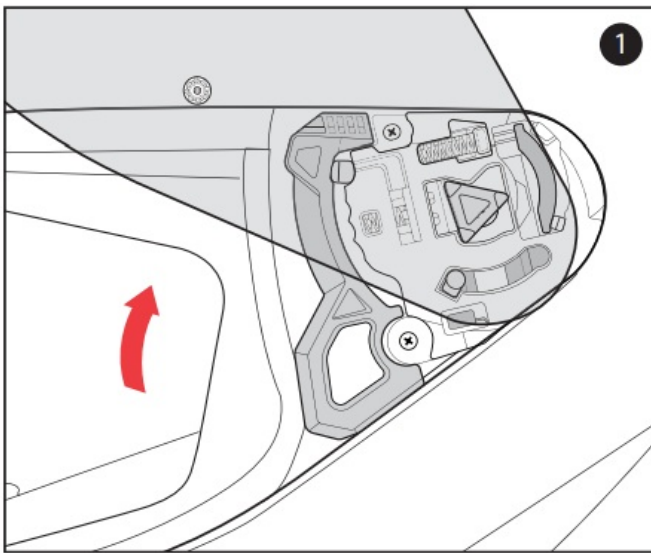
Visor(Shield) Operation

To ensure safe riding, make sure the visor(shield) is lowered completely until it "clicks" to the post.



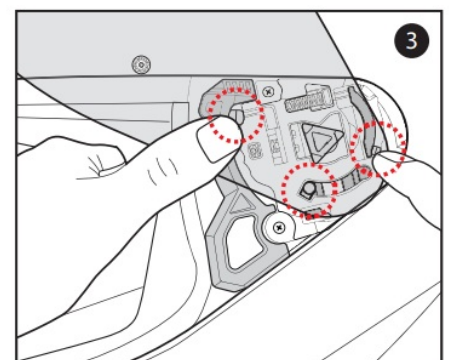
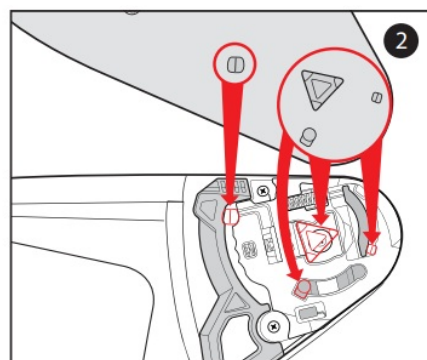
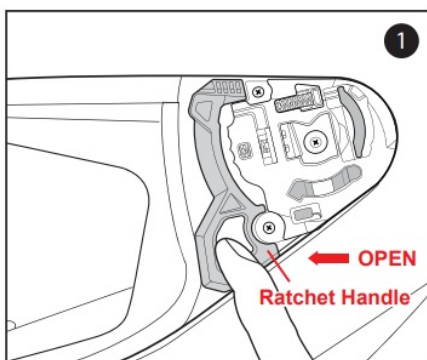
Visor(Shield) Removal

1. Lift visor(shield) open to maximum position.
2. Pull base plate handle to unlock position.
3. Pull visor(shield) to detach Hook(a) and Hook(b).
4. Remove Hook(c) by tilting Visor and pull in the direction of the arrow.(Repeat on opposite side.)



Visor(Shield) Installation

1. Ensure that the ratchet handle is in the open position.
2. Align and insert the top of the visor(shield) guide into the ratchet guide.
3. With the guides properly aligned, press the lower section of the visor(shield) into the ratchet mechanism. The locking tab should pop into position, locking the visor(shield) into place.

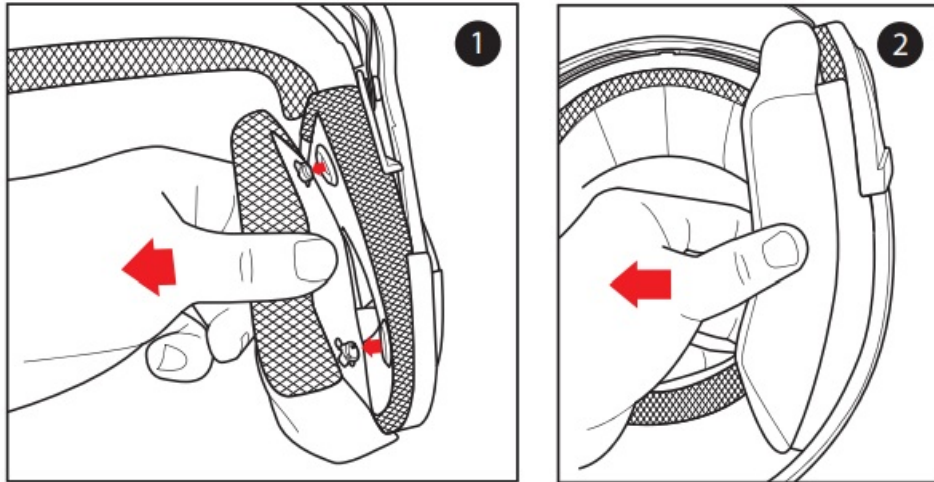


Always check to make sure helmet pads are installed before using the helmet. A helmet with missing or improperly installed pads may increase your risk of serious injury or death in an accident.

Cheek Pad Removal

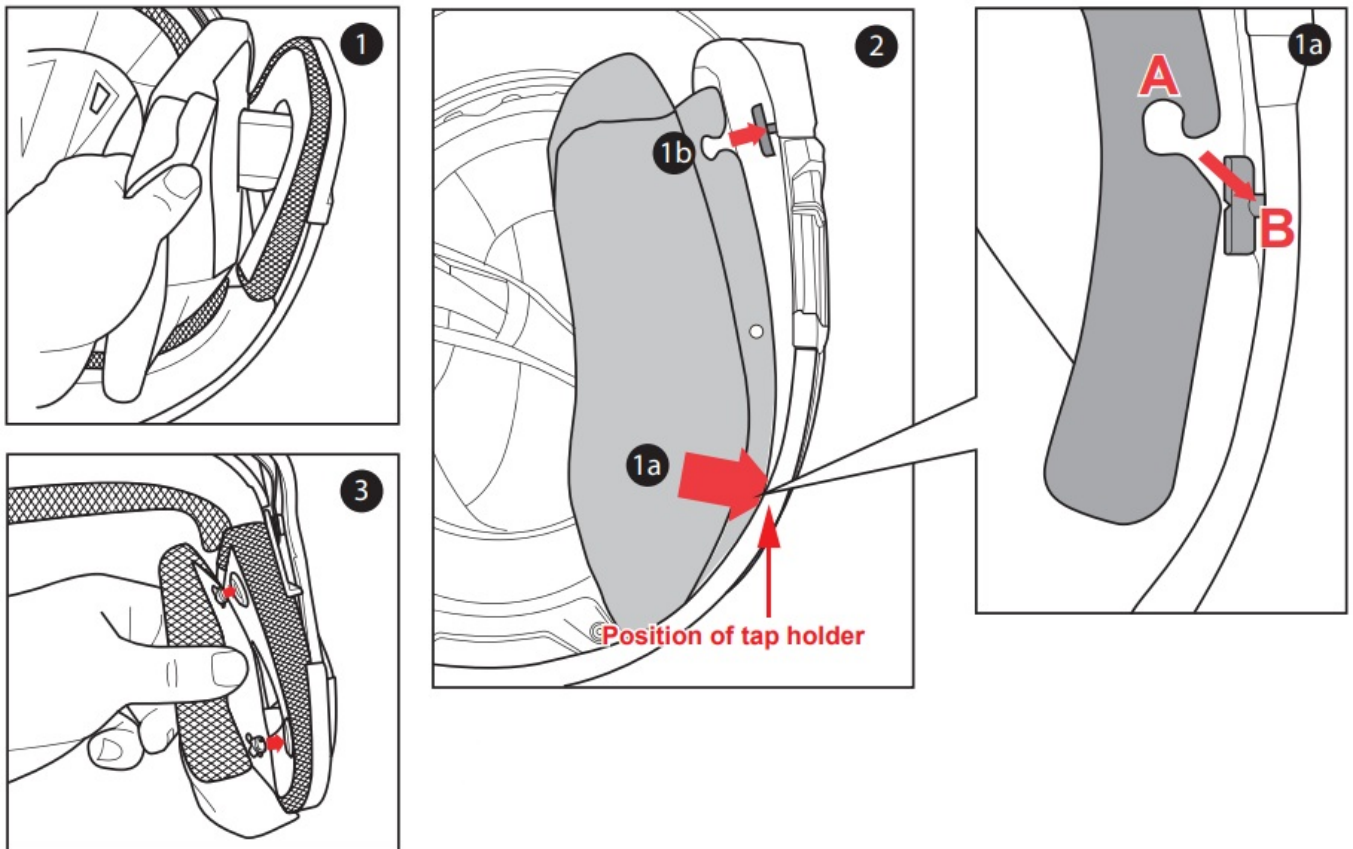
There are 3 snaps holding the cheek pad in place.

1. Gently pry the cheek pad away from the interior, releasing the snaps.
2. Grasp the cheek pad near its center and gently pull it free from the chin strap.



Cheek Pad Installation

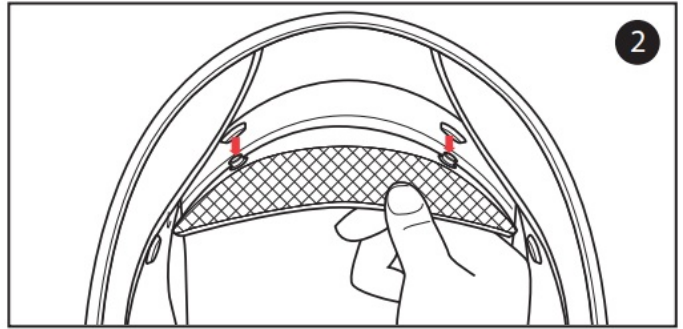
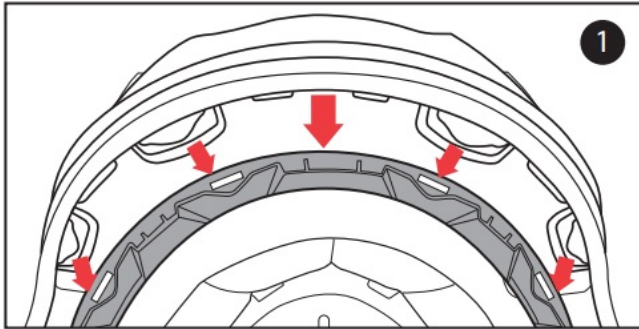
1. Feed the chin strap through the opening in the cheek pad.
2. Align and fully slide the cheek pad plastic plate between shell and Liner.
3. Clip the cheek pad's 3 small male snaps to the 3 female snaps fixed on the shell interior.



Slide tab 'A' from the cheek pad into the holder 'B'. (Repeat same on opposite side)

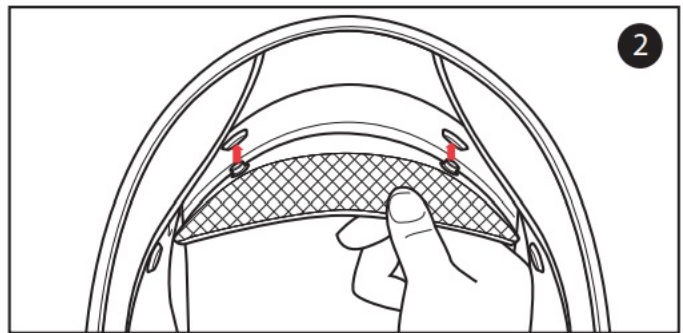
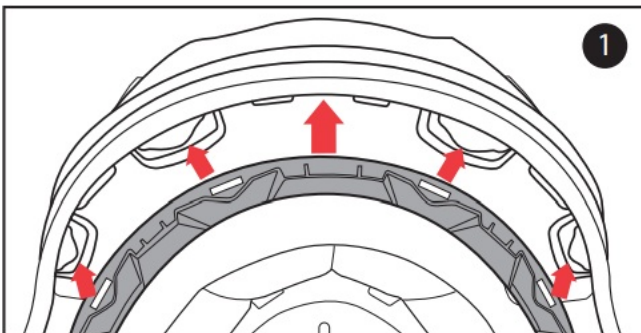
Comfort Liner Removal

1. Grasp the comfort liner fabric as close as possible to its plastic base and pull/pry away from the helmet. Notice how the comfort liner plastic section aligns with the shell plastic sleeve. This will help orient you with the reinstallation.
2. Repeat same at rear.



Comfort Liner Installation

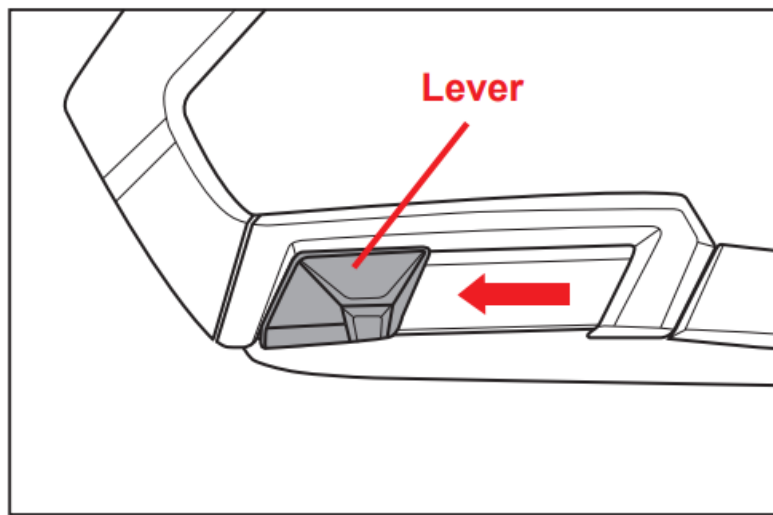
1. Install the front section first by aligning the plastic shell base and the comfort liner plastic sleeve, ensuring that the center and side holes are properly aligned. Press the comfort liner plastic sleeve (center portion) into the center of the channel which is built into the plastic shell base, working your way outward to each side.
2. Align and snap the two rear snaps into place.



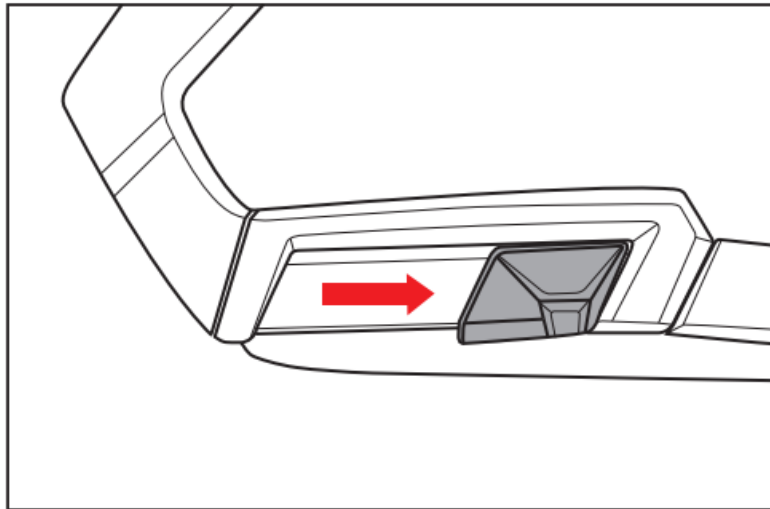
Try not to operate the sun shield while riding as this may impair your vision and may lead to an accident. DO NOT pull on the sun shield when it is already down. The sun shield may be ejected and this will increase the risk of serious injury or death in the event of an accident. DO NOT attempt to adjust the sun shield itself with your hands. Always use the sun shield lever. DO NOT use sun shield at night time. The sun shield is only for day time use. The sun shield does not provide eye protection. When you use the sun shield be sure that the clear visor(shield) is also in closed position.

Sun shield Operation

- Above illustration shows raised sun shield position.

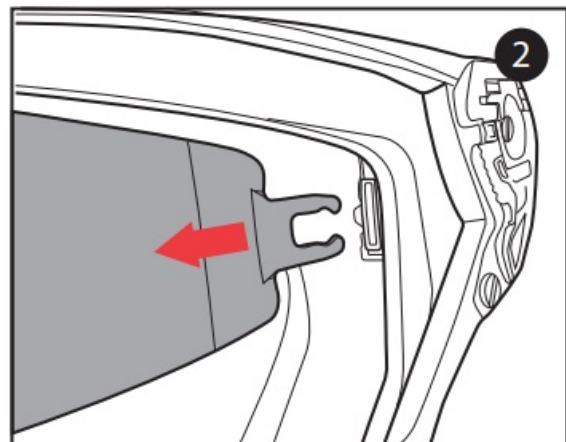
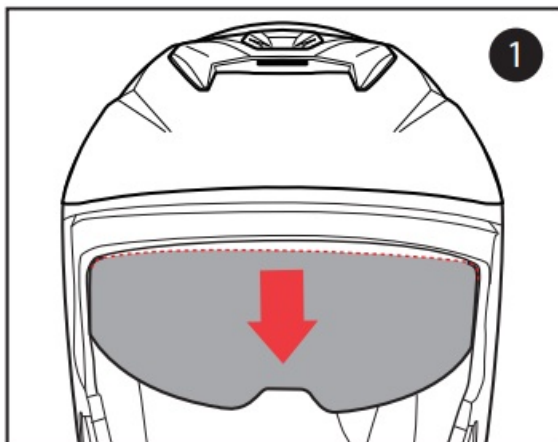


- Above illustration shows lowered sun shield position.



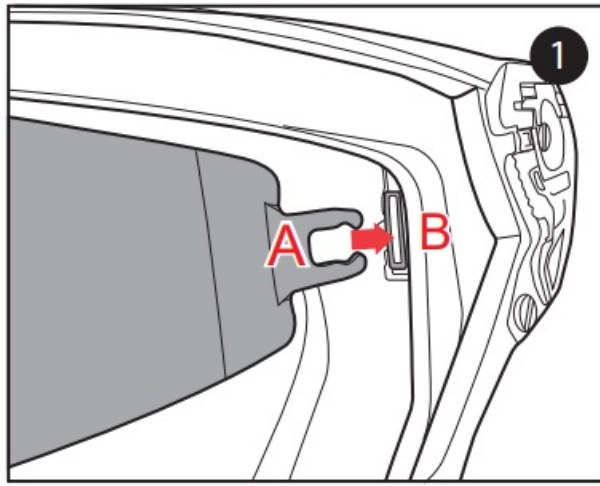
Sun shield Removal

1. While sun shield is in lower position, gently pull it until you see the top of the sun shield.
2. Gently pull one side of the sun shield as arrow indicates (repeat same for other side).



Sun shield Installation

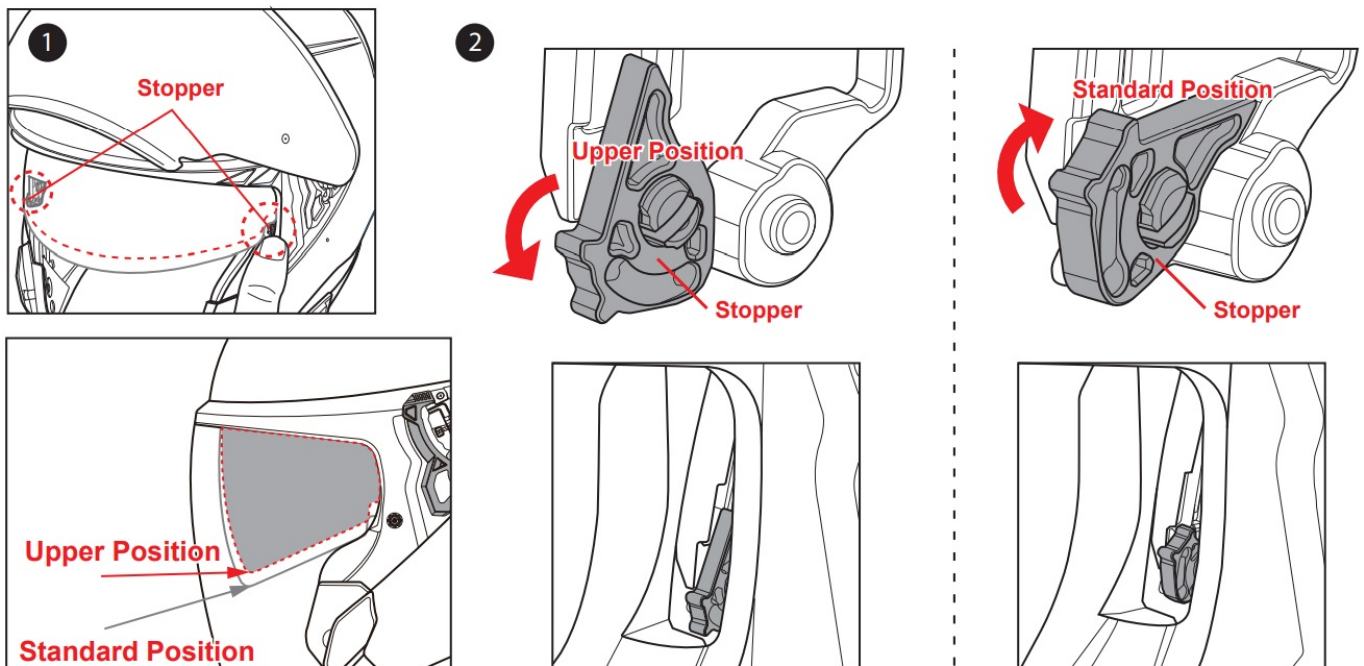
Insert sun shield tab 'A' into 'B' position.(Repeat same on opposite side)



When installing the sun shield, be sure to have it slid behind the tap 'B' holder.

Sun shield Position Guide

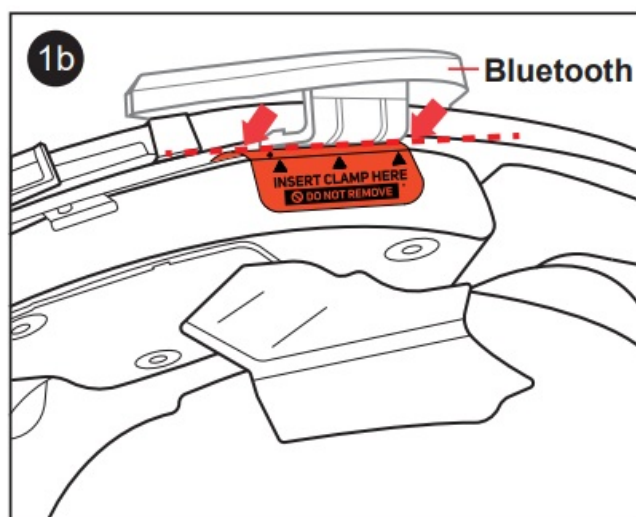
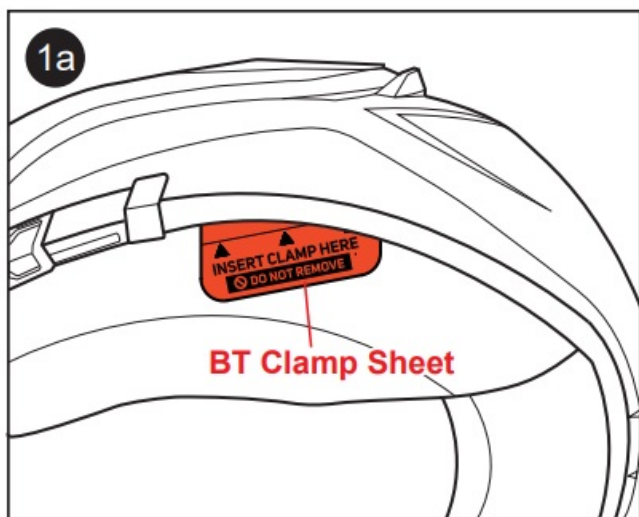
1. Check if the sun shield stoppers on both sides are in the standard position.
2. To raise the sun shield further and secure it, lower the stoppers towards the upper position. To return it to the standard position, raise the stoppers towards the standard position.



How to install Sheet Bluetooth

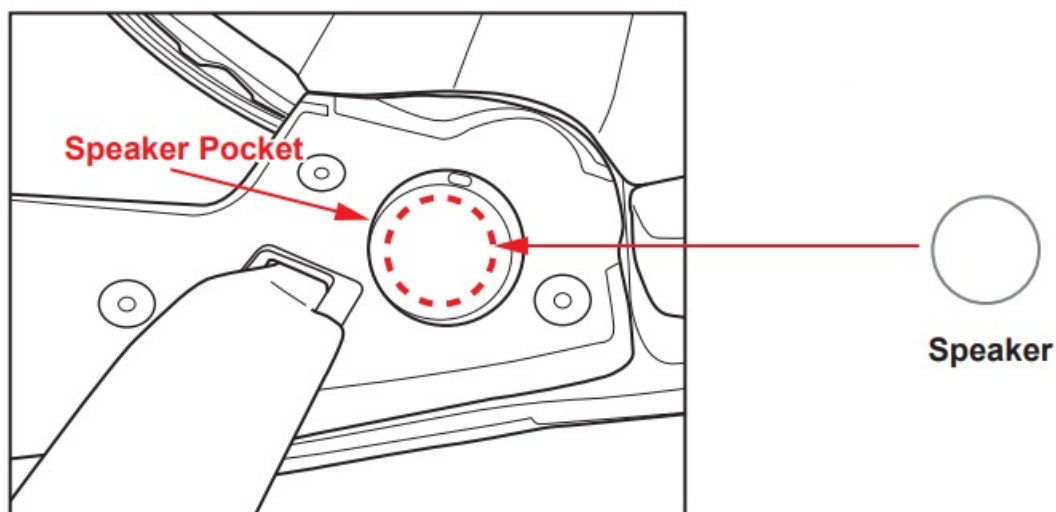
Remove the cheek pad (see P10 Cheek Pad Removal) and insert a Bluetooth device between the shell and the BT Clamp mounting plate. Install the Bluetooth device without overlapping the mounting plate.

Be careful not to let the BT Clamp mounting plate go between the shell when inserting Bluetooth.



How to install speaker pocket

If you install communication system speakers, please do not use the speaker pocket cover.



Replacement Parts

Always check to make sure helmet pads are installed before using the helmet. A helmet with missing or improperly installed pads may increase your risk of serious injury or death in an accident.

Do Not Modify Your Helmet

Your HJC helmet is designed to meet ECE R22.06 standard. Contact HJC Europe for more information about the ECE R22.06 standard. Modifying your helmet may increase your risk of serious injury or death in an accident. Do not modify your HJC helmet. Modifications include the following :

- drilling holes;
- cutting shell, liner, or strap;
- modifying the retention system, including adding a chin cup;
- removing parts;
- painting; and
- attaching accessories that are not manufactured by HJC for this helmet.

If you have questions about modifications, please contact HJC, See back cover for contact information.

Storing Your Helmet and Visor(Shield) Correctly

An improperly stored helmet and visor(shield) can become damaged and may increase your risk of serious injury or death in an accident. You should:

- Store helmet and visor(shield) in a cool and dry place,
- Keep helmet and visor(shield) away from pets and other animals,
- Keep helmet and visor(shield) away from heat in excess of 50°C and do not set on or near hot surfaces.
- When helmets left out in the sun for extended periods of time, it may fade overtime.

Helmet Replacement

Although your HJC helmet is constructed with the best materials available to offer a long-lasting product, it will eventually need to be replaced. Immediately replace your helmet if:

- It has suffered an impact. Your helmet is only designed for ONE impact. An impact may fracture the outer shell or compress the impact absorbing liner. You may not be able to detect this damage. Any impact in a crash or a drop from as low as 4 feet is enough to damage your helmet.
- The shell, lining, or retention system is damaged. The helmet shell, the impact absorbing lining, and the retention system must be in good condition to provide you with the most protection.

Even if your helmet has not been damaged, it needs to be replaced every 3 to 5 years depending on how much you use it. Over time, UV rays and adhesive and component aging will damage your helmet. Wearing a damaged helmet may increase your risk of serious injury or death in an accident. If you are unsure if you need to replace your helmet, contact HJC Europe before using your helmet again.

Helmet Disposal

If you buy a new helmet, destroy the old one to ensure it cannot be reused. Do not sell or give away your old helmet, even if it has not been damaged. Over time the protective foam in the helmet will adjust to the contours of your head. If someone else uses this helmet it will not provide them with as much protection.

Warranty

HJC hereby extends a limited warranty to the purchaser of a HJC helmet that the helmet is free of defects in materials and workmanship.

- **Coverage**

This warranty is applicable to manufacturer's defects only and the warranty period varies between HJC models. The RPHA Series warrants up to 5 years from the date of purchase or 7 years from date of manufacture, while all other models warrant up to 3 years from the date of purchase or 5 years from date of manufacture (whichever comes first). This warranty does not apply to any problems that arise from wearer's misuse, negligence, modifications, accidents, etc. A change of fluorescent color is not subject to warranty as this is a typical characteristic of fluorescent color; it may fade or degrade depending on the user's environment.

- **Disclaimer**

Any warranty of merchantability and any implied warranty are hereby expressly disclaimed. In addition, HJC shall not be liable for any consequential damages.

- **Procedure**

In order to receive warranty, please take your helmet, your receipt showing the date of purchase, and a brief memo that includes a description of the problem, your name, and phone number to the authorized HJC dealer from which you purchased your helmet.



Europe

- 1 rue Benjamin Silliman 67116 Reichstett-France
- **Tel.** +33 (0)3 90 22 74 00
- **Fax.** +33 (0)3 90 20 09 12

If you have any questions, please email us at info@hjc-europe.com

America

- 511 S. Harbor Blvd. #V, La Habra, California 90631
- Tel. [562-407-2186](tel:562-407-2186)
- Fax. [562-802-7706](tel:562-802-7706)

If you have any questions, please e-mail us at support@hjchelmets.com

www.hjchelmets.com

HJC Corp.

FAQ

Q: Is the helmet waterproof?

A: The helmet is designed to resist water ingress, but it is not completely waterproof. It is recommended to avoid prolonged exposure to heavy rain.

Q: Can I replace the visor myself?

A: Yes, the visor is replaceable. Follow the instructions provided in the user manual for safe and proper replacement.

Documents / Resources



[HJC i31 Open Face Helmet](#) [pdf] Owner's Manual
i31, i31 Open Face Helmet, i31, Open Face Helmet, Face Helmet, Helmet

References

- [User Manual](#)

[Manuals+](#), [Privacy Policy](#)

This website is an independent publication and is neither affiliated with nor endorsed by any of the trademark owners. The "Bluetooth®" word mark and logos are registered trademarks owned by Bluetooth SIG, Inc. The "Wi-Fi®" word mark and logos are registered trademarks owned by the Wi-Fi Alliance. Any use of these marks on this website does not imply any affiliation with or endorsement.