

HI-TEK
T316R Suitcase Record
Player



Hitek T316R Suitcase Record Player Instruction Manual

[Home](#) » [Hitek](#) » Hitek T316R Suitcase Record Player Instruction Manual 

Contents

- 1 Hitek T316R Suitcase Record Player
- 2 PRODUCT SPECIFICATIONS
- 3 PRODUCT OVERVIEW
- 4 SET UP & BASIC OPERATION
- 5 MAINTENANCE
- 6 FAQ
- 7 SPECIFICATIONS
- 8 PRODUCT OVERVIEW
- 9 SET UP & BASIC OPERATION
- 10 MAINTENANCE
- 11 INSTALLING A NEW STYLUS CARTRIDGE
- 12 Federal Communications Commission (FCC) Statement
- 13 Documents / Resources
 - 13.1 References
- 14 Related Posts

HI-TEK

Hitek T316R Suitcase Record Player



PRODUCT SPECIFICATIONS

- **Operating Voltage:** 5V DC
- **Speeds:** 33, 45, 78 RPM
- **Accessories:** 45 RPM Adapter, Dust Cover, Carrying Case

PRODUCT OVERVIEW

1. Secure case latch
2. Protective dust cover and carrying case
3. Adapter for use with 45 RPM records with cut out centers
4. Tone arm lift
5. Auto stop control
6. Function Switch
7. Pitch Control
8. Speakers
9. Power switch / Volume control
10. Speed selector (33, 45, 78 rpm)
11. Headphone jack
12. Cartridge
13. Aux in
14. Line out R channel
15. Line out L channel
16. DC power jack

SET UP & BASIC OPERATION

Power Connection

Ensure that the voltage of your home corresponds to the operating voltage of the unit. Connect the unit to a 5V DC adaptor.

Playing a Record

1. Place the record on the turntable.
2. Turn on the power using the On/Off Volume Knob.
3. Set the Function Switch to PHONO position.
4. Select the appropriate speed using the Speed Switch.
5. Release the tone arm lock and lift up the tonearm.
6. Move the tonearm over the record to start playing.

Connect to External Audio System

To connect to an external audio system, use RCA cables to connect the Line out plugs to the Line input of your mixer or amplifier.

Pitch Control

Adjust the turntable speed by rotating the Pitch Control Knob clockwise to increase speed or counter-clockwise to decrease speed.

MAINTENANCE

Maintaining the Turntable Needle (Stylus)

Dust the stylus with a soft brush dipped in rubbing alcohol occasionally. Clean vinyl records with an anti-static cloth after each use.

Transporting the Turntable

1. Place protective cap on the stylus and rest clip into pick-up arm.
2. Ensure the case is closed and latch is secure.

Installing or Replacing the Stylus

To replace the stylus, follow instructions carefully to avoid damage to tone arm and audio line wires.

FAQ

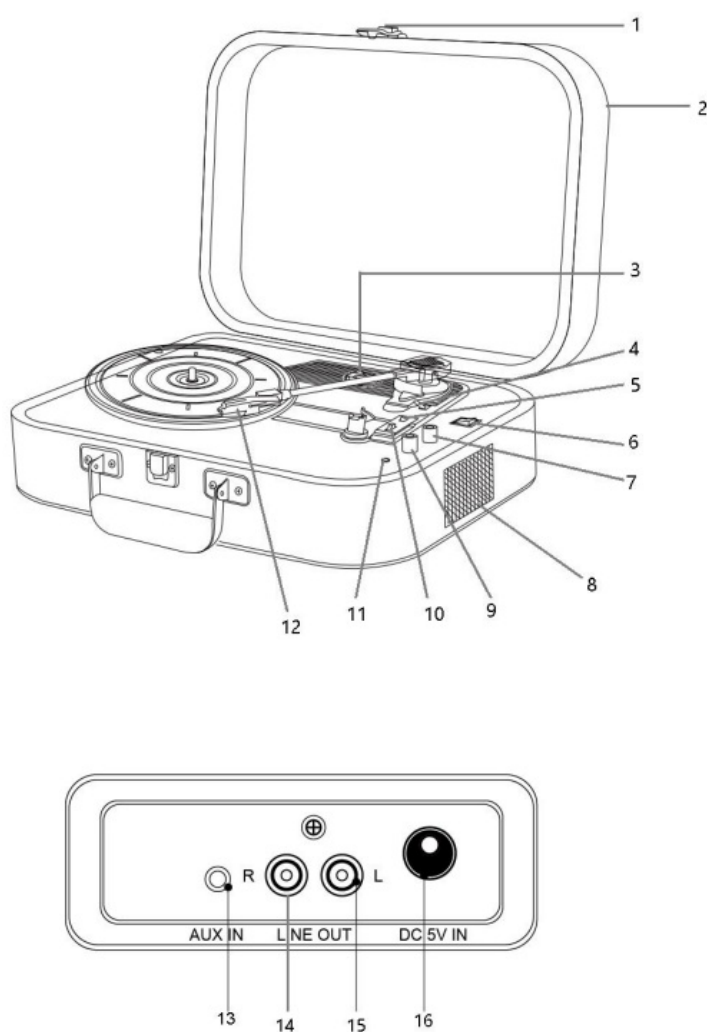
How often should I replace the stylus?

It is recommended to replace the stylus after 250 hours of play to maintain optimal performance.

SPECIFICATIONS

Product Name	Suitcase Record Player
Turntable Speed	33 1/3, 45, 78 RPM
Bluetooth® Version	Bluetooth® V5.3
Bluetooth® Frequency	2.40 GHz
Bluetooth® Operating Distance	Up to 33 Feet (10 Meters)*
Input	Aux In
Output	Line Out
Built-in Speakers	3" x 2
Speaker Output Power	1W x 2
Power Source	AC/DC 100-240V 50-60Hz 5V/1A
Accessories Included	ETL Approved Power Adaptor, User Manual, 45 RPM adapter

PRODUCT OVERVIEW



1. Secure case latch
2. Protective dust cover and carrying case
3. Adapter for use with 45 RPM records with cut out centers.

4. Tone arm lift
5. Auto stop control
6. Function Switch
7. Pitch Control
8. Speakers
9. Power switch / Volume control
10. Speed selector (33, 45, 78 rpm)
11. Headphone jack
12. Cartridge
13. Aux in
14. Line out R channel
15. Line out L channel
16. DC power jack

SET UP & BASIC OPERATION

Power Connection

Ensure that the voltage of your home corresponds to the operating voltage of the unit. Your unit is ready to be connected to a 5V DC adaptor.

Playing a Record

1. Place the record of your choice on the turntable. Use the 45 RPM Adapter if necessary.
2. Rotate the On/Off Volume Knob to turn on the power.
3. Set the Function Switch to PHONO position.
4. Set the Speed Switch accordingly by using the speed selection switch (33.3, 45 or 78 RPM).
5. Release the tone arm lock.
6. Use the Tonearm Lever to lift up the tonearm.
7. Gently move the tonearm over the record where play is desired to begin. Set the Tonearm Lever back to the down position, the tonearm will descend slowly onto the record and begin to play.
8. When a record comes to the end, the turntable will stop automatically if the auto-stop switch is in the ON position. If the switch is in the OFF position the turntable will keep revolving until the tone arm is returned to the tone arm rest.
9. Lift up the tone arm and put it on the rest when finished.
10. Replace the protective cap on the stylus and close the tone arm lock.
11. Turn off power.

Connect to External Audio System

You can listen to your new turntable using the built-in speakers but you may wish to connect it to your existing audio system. Connect the audio plugs to the Line input on your mixer or amplifier using an RCA cable (not supplied).

- Red plug into R/H channel input.
- White plug into L/H channel input.

Connect a Bluetooth® Device to the Turntable

1. Turn the Function Switch to Bluetooth mode , you will hear an activation sound from the unit.
2. Turn on the Bluetooth feature of your audio device, search for “T316R” and pair.
3. Once your device is successfully paired with the unit, you will hear a short confirmation sound from the unit

Pitch Control

The turntable speed can be increased or decreased by approximately 10% by rotating the Pitch Control Knob. To increase the speed, turn the Pitch Control Knob clockwise. To decrease the speed, turn the knob counter-clockwise.

MAINTENANCE

Maintaining the Turntable Needle (“Stylus”)

To extend the life of your stylus, dust the stylus occasionally with a very soft brush dipped in rubbing alcohol, brushing from the back to the front of the cartridge.

Maintaining Vinyl Records

To maximize sound quality and extend the life of your vinyl records, it is recommended you clean your records with an anti-static cloth after every use.

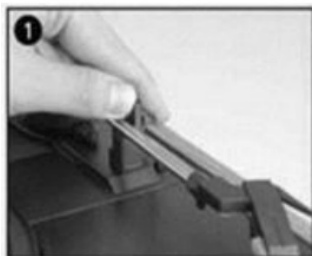
Transporting the Turntable

1. Place the protective cap on the stylus.
2. Put the rest clip into the pick-up arm.
3. Ensure the case is closed and the latch is secure.

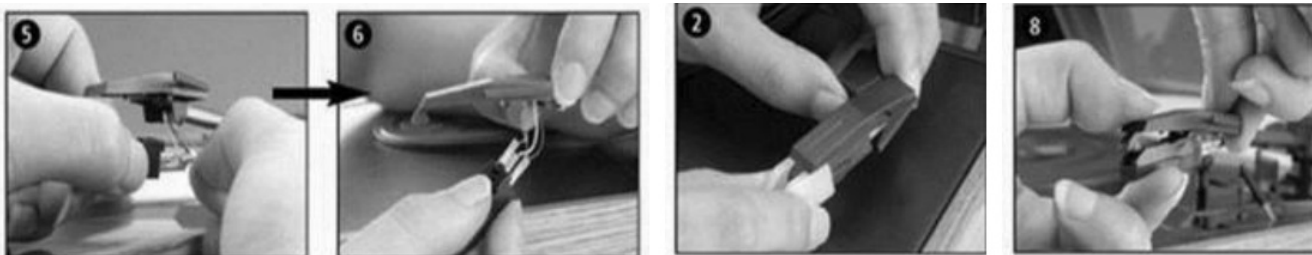
Installing or Replacing the Stylus

The stylus needs to be replaced periodically. It is recommended the stylus be replaced after 250 hours of play. To install a new stylus or replace the existing stylus, follow the steps below:

1. Push the arm lock to release the tone-arm.
2. Remove the cartridge cap to expose the needle.
3. Gently separate the cartridge from the socket.
4. Remove the audio-line from the cartridge.



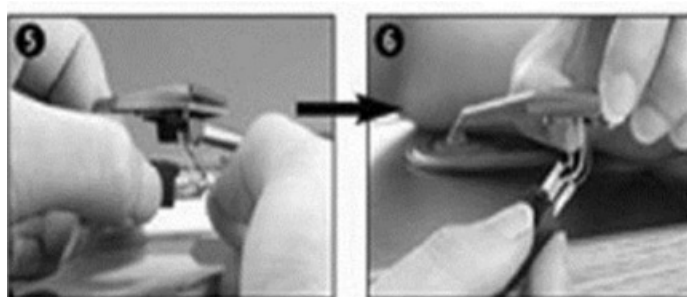
5. Align the audio-line with the new cartridge.
6. Insert the audio-line into the new cartridge.
7. Gently insert the cartridge into the socket.
8. Attach the cartridge cap.



NOTE: Please exercise extreme care whilst performing this operation so as to avoid the tone arm and audio line wires from any damage.

INSTALLING A NEW STYLUS CARTRIDGE

Refer to the figures 5 & 6



NOTES

- We advise you to clean your records with an anti-static cloth to gain maximum enjoyment from them and to make them last.
- We would also point out that for the same reason your stylus should be replaced periodically (approximately every 250 hours)
- Dust the stylus from time to time using a very soft brush dipped in alcohol (brushing from back to front of the cartridge)
- WHEN TRANSPORTING YOUR RECORD PLAYER DO NOT FORGET TO:
 - Replace the protective cap on the stylus.
 - Put the rest clip into the pick-up arm.

Federal Communications Commission (FCC) Statement

This device complies with part 15 of the FCC Rules. Operation is subject to the following two conditions:
This device may not cause harmful interference, and this device must accept any interference received, including interference that may cause undesired operation.

Note: This equipment has been tested and found to comply with the limits for a Class B digital device, pursuant to part 15 of the FCC Rules. These limits are designed to provide Reasonable protection against harmful interference in a residential installation. This equipment generates, uses and can radiate radio frequency energy and, if not installed and used in accordance with the instructions, may cause harmful interference to radio communications. However, there is no guarantee that interference will not occur in a particular installation. If this equipment does cause harmful interference to radio or television reception, which can be determined by turning the equipment off and on, the user is encouraged to try to correct the interference by one or more of the following measures:

- Reorient or relocate the receiving antenna.


- Increase the separation between the equipment and receiver.
- Connect the equipment into an outlet on a circuit different from that to which the receiver is connected.
- Consult the dealer or an experienced radio/TV technician for help.

Warning: Changes or modifications made to this device not expressly approved by Hitek Group Co., Limited may void the FCC authorization to operate this device. Note: The manufacturer is not responsible for any radio or TV interference caused by unauthorized modifications to this equipment. Such modifications could void the user’s authority to operate the equipment.

RF exposure statement:

This device complies with FCC RF radiation exposure limits set forth for an uncontrolled environment. The device is installed and operated without restriction.

Documents / Resources

	<p>Hitek T316R Suitcase Record Player [pdf] Instruction Manual 2APOQ-T316R, 2APOQT316R, T316R Suitcase Record Player, T316R, Suitcase Record Playe r, Record Player, Player</p>
---	---

References

- [User Manual](#)

[Manuals+.](#) [Privacy Policy](#)

This website is an independent publication and is neither affiliated with nor endorsed by any of the trademark owners. The "Bluetooth®" word mark and logos are registered trademarks owned by Bluetooth SIG, Inc. The "Wi-Fi®" word mark and logos are registered trademarks owned by the Wi-Fi Alliance. Any use of these marks on this website does not imply any affiliation with or endorsement.