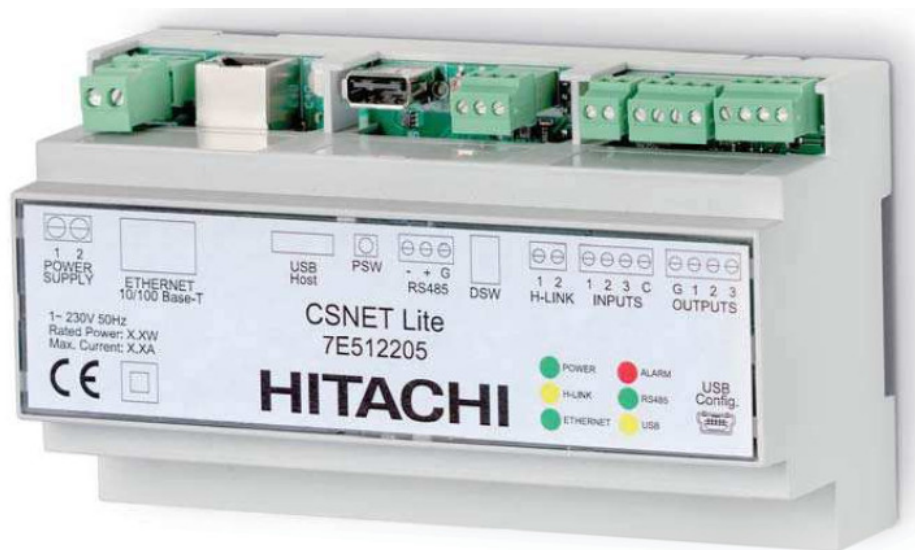


HITACHI CSNET Lite Air Conditioning SAS Instruction Manual

[Home](#) » [Hitachi](#) » HITACHI CSNET Lite Air Conditioning SAS Instruction Manual 

HITACHI

Original version
INSTRUCTION MANUAL



CSNET Lite

Contents

- [1 CSNET Lite Air Conditioning SAS](#)
- [2 SAFETY SUMMARY](#)
- [3 FACTORY-SUPPLIED COMPONENTS](#)
- [4 INSTALLATION](#)
- [5 Documents / Resources](#)

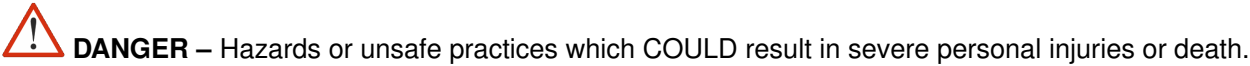
CSNET Lite Air Conditioning SAS

Specifications in this manual are subject to change without notice in order that HITACHI may bring the latest

innovations to their customers. Whilst every effort is made to ensure that all specifications are correct, printing errors are beyond HI-TACHI's control; HITACHI cannot be held responsible for these errors.



This product shall not be mixed with general house waste at the end of its life and it shall be retired according to the appropriated local or national regulations in a environmentally correct way. Contact to the corresponding authorities for more information.



CAUTION — Hazards or unsafe practices which COULD result in minor personal injury or product or property damage.



NOTE — The text following this symbol contains information or instructions that may be of use or that require a more thorough explanation.

The English version is the original one; other languages are translated from English. Should any discrepancy occur between the English and the translated versions, the English version shall prevail.

SAFETY SUMMARY

HITACHI cannot anticipate every possible circumstance that might involve a potential hazard.



IMPORTANT NOTE

Read carefully the document PMML0505 inside the USB Pen Drive Memory before performing the installation work.



DANGER

- Do not install CSNET Lite unit outdoors.
- Do not install this device in places accessible to the general public. Install it in enclosures or other places which are accessible only by the usage of a tool.
- Do not connect power supply before the device installation is correctly done. Always disconnect power supply from the device before any maintenance or servicing action.



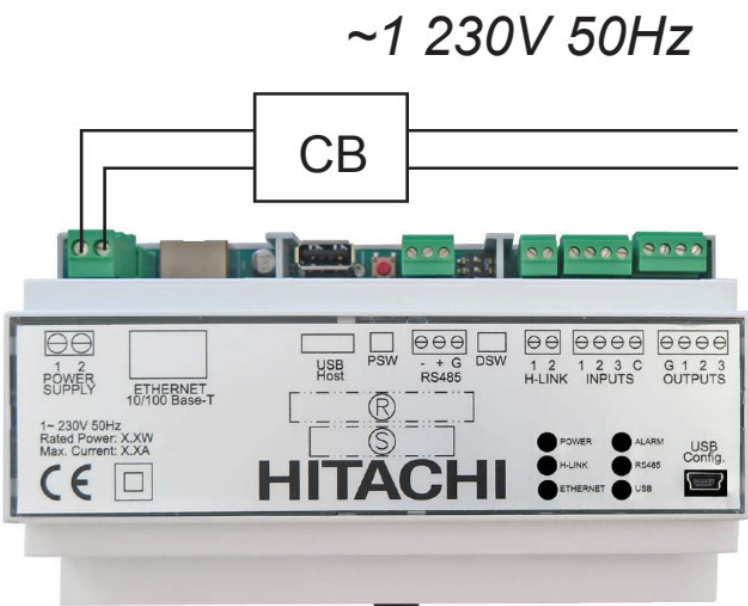
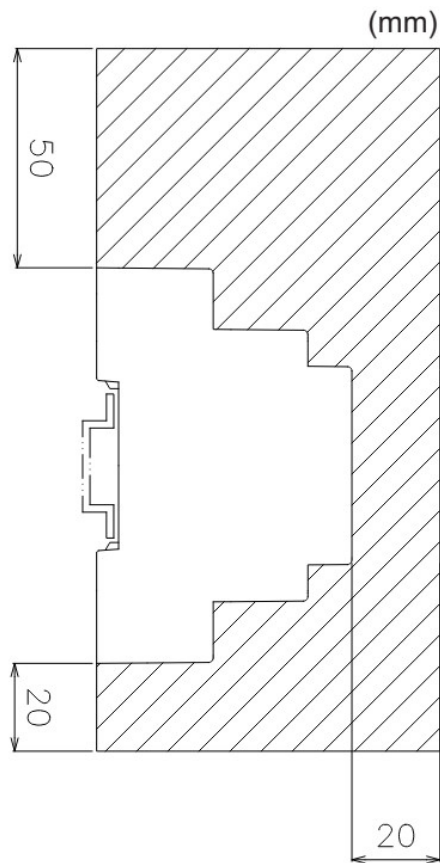
CAUTION

- This appliance must be used only by adult and capable people, having received the technical in- formation or instructions to handle properly and safely this appliance.
- Children should be supervised to ensure that they do not play with the appliance.
- Install the device inside an enclosure over a 35 mm DIN rail. The device power supplier must be a fixed installed wiring with an additional circuit breaker for power switch ON/OFF when required.


Item	Notes
CB	Circuit Breaker 5A
Cable	2 x 0.75 (1)

NOTE

1. Power cable type cannot be lighter than the (mm)



FACTORY-SUPPLIED COMPONENTS

ITEM	QUANTITY	IMAGE
CSNET Lite	1	

Instruction Sheet	1	 <p>The image shows the Hitachi CSNET Lite instruction sheet and the device. The instruction sheet is titled 'HITACHI' and lists the instruction manual in various languages: (EN) INSTRUCTION MANUAL, (ES) MANUAL DE INSTRUCCIONES, (DE) BEDIENUNGSANLEITUNG, (FR) MANUEL D'UTILISATION, (IT) MANUALE DI ISTRUZIONI, (RU) РУКОВОДСТВО ПО ЭКСПЛУАТАЦИИ, (DA) MANUAL INSTRUCCIONS, (PT) MANUAL DE INSTRUÇÕES, (NL) BRUGGAAHIDING, (SE) INSTALLATIONSHANDBOK, (EL) ΕΓΧΕΙΡΙΔΙΟ ΟΔΗΓΙΩΝ, and (CZ) NÁVOD K POUŽITÍ. Below the list is the 'CSNET Lite' logo. The device is a small, white, rectangular unit with a green terminal block on top and a label with the Hitachi logo and technical specifications.</p>
USB Memory	1	 <p>The image shows a Hitachi USB Memory device. It is a white, rectangular device with a black USB connector and a black circular button. The Hitachi logo is printed on the white body.</p>
ETHERNET Cable	1	 <p>The image shows a Hitachi Ethernet Cable. It is a long, thin, grey cable with RJ45 connectors at both ends.</p>

INSTALLATION

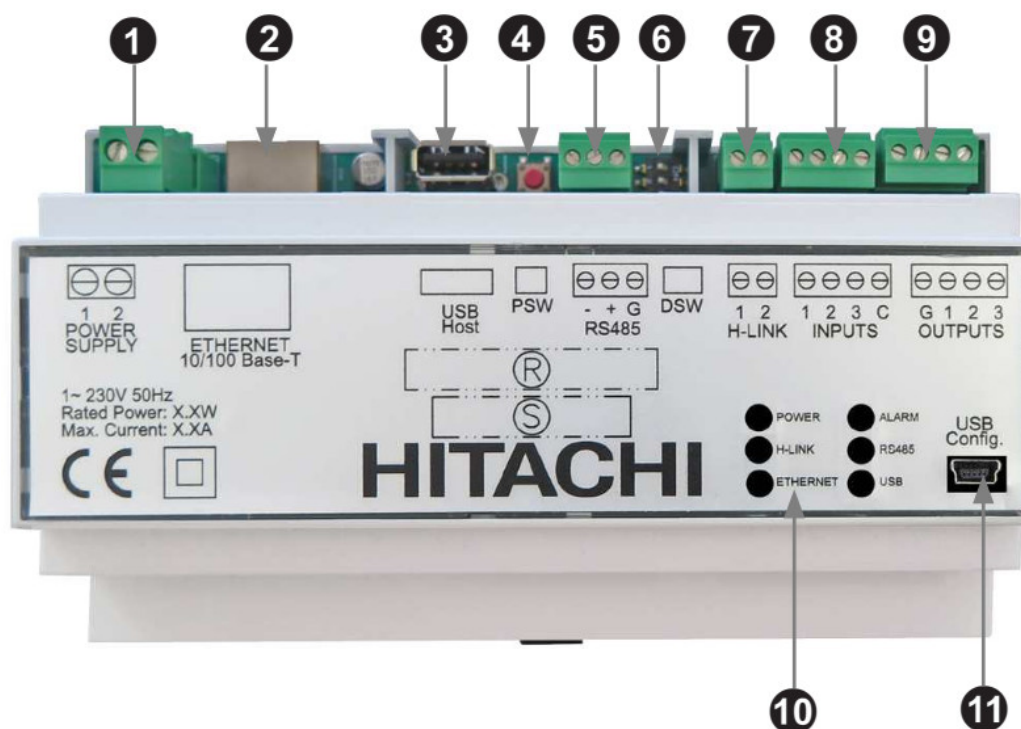


- Disregarding the safety and assembly instructions may result in the falling of and / or damage to your electrical appliance. Opening the package represents your undertaking to closely read and follow the instructions. This device is not intended for use in public places.
- Local or national regulations must be followed at all times during the preliminary work to prepare the electric power line for the equipment.



For further information consult the current regulations in the country where the unit is to be installed.

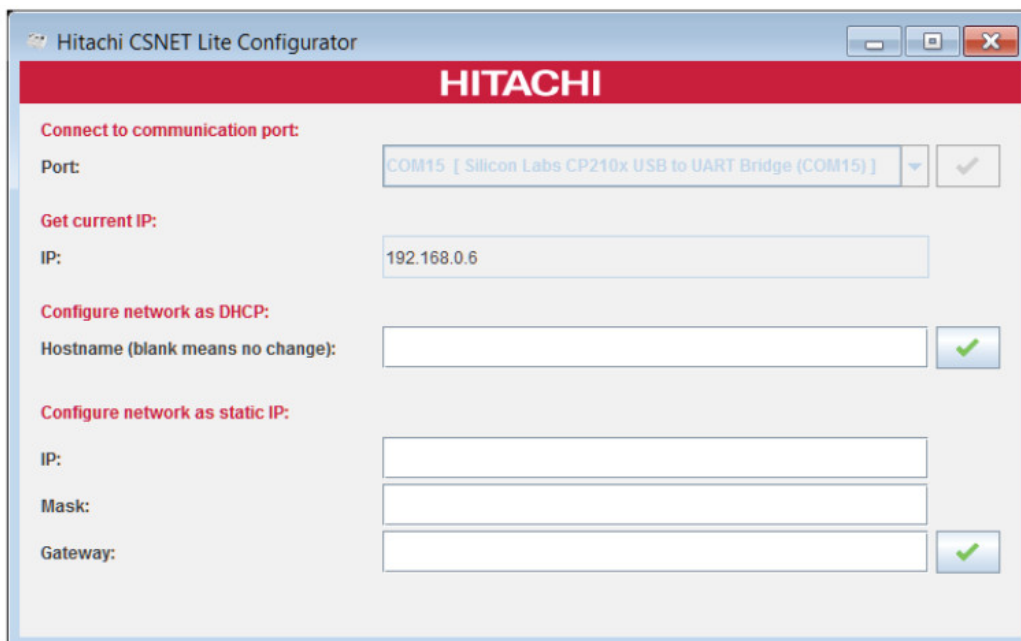
3.1 CONNECTORS DESCRIPTION



No.	Description
1	Power supply
2	RJ45 Ethernet
3	USB for log
4	Push button
5	RS485 for Modbus RTU
6	DSW for device configuration
7	H LINK comunication
8	Inputs
9	Ouputs
10	LEDs for operation indication
11	USB at configuration time only

3.2 START UP PROCESS

1. Connect the device to the network using a LAN cable.
2. Turn the device On.
3. There are two ways to interface with the device:
 - a. **Direct Connection:**
 - i. Connect PC to CSNET Lite using USB cable (supplied with
 - ii. Use CSNET Lite configuration tool to connect to CSNET Lite (supplied with configuration kit).



C-Sh7L.0 co noguraisan toot



- iii. Select communication port and click connect
- iv. Configure network as DHCP: it is necessary to give a hostname. This hostname is given by the customer IT service.
- v. Configure network as static IP: it is necessary to fill IP, Mask and Gateway fields. This information is given by the customer IT service.



NOTE Any changes may require some time to be updated by network server. IP field gives information about configuration state.


b. Remote Connection:

- i. Use a computer connected to the same network as the device.
- ii. Open the address <https://192.168.0.6> in a web browser.

PMML0503 rev.0 – 05/2019

HITACHI

Documents / Resources

	<p>HITACHI CSNET Lite Air Conditioning SAS [pdf] Instruction Manual CSNET Lite, CSNET Lite Air Conditioning SAS, Air Conditioning SAS, SAS</p>
---	--