



HIPPO V18I Action Camera Instruction Manual

[Home](#) » [HIPPO](#) » HIPPO V18I Action Camera Instruction Manual 

Contents

- 1 HIPPO V18I Action Camera
- 2 MAINTENANCE
- 3 OVERVIEW OF CAMERA
- 4 Button Operation Instructions
- 5 GETTING STARTED
- 6 OVERVIEW OF SHOOTING MODES
- 7 CUSTOMIZING YOUR CAMERA
- 8 CONNECTING TO THE APP
- 9 PLAYBACK YOUR CONTENT
- 10 BATTERY
 - 10.1 BATTERY STORAGE AND HANDLING
- 11 2-IN-1 WIRELESS TRANSMITTER
 - 11.1 overview of 2-in-1 transmitter
- 12 FCC Warning
- 13 Documents / Resources
 - 13.1 References

HIPPO

HIPPO V18I Action Camera



MAINTENANCE

Underwater Usage Notes

This camera are splash, water, and dust resistant and were tested under controlled laboratory conditions with a rating of IP68 under IEC standard 60529 (maximum depth of 20 meters up to 30 minutes). Splash, water, and dust resistance are not permanent conditions and resistance might decrease as a result of normal wear.

In order to ensure the waterproof performance of the camera, please carefully refer to the operation and maintenance precautions as following. The machine is not waterproof due to improper operation and improper maintenance, which is not covered by the warranty.

1. Make sure to check whether the silicone pads on the waterproof cover is clean before using underwater. Otherwise it will affect the camera's waterproof ability, and a single hair or sand will cause leakage!
2. Make sure to check whether the silicone pad on the battery waterproof cover is intact, Damage to the silicone pad will cause water leakage!
3. Make sure that the battery waterproof cover is tightly closed before using underwater. If not, the camera will not be waterproof.
4. Avoid jumping into water a high speed with camera. Otherwise, the impact may result in water water leakage.
5. DO NOT use the camera in a hot spring or expose the product directly to high temperatures over 40°C. High temperature may cause deformation of the waterproof seal on the camera body and lose its waterproof function.
6. Keep it safe from falling and dropping. Falling and drop will cause damage to the watertight seal on the camera body and the camera is not waterproof.
7. The microphone and speaker's hole on the camera has built in waterproof material. DO NOT remove the waterproof material or poke the holes. Otherwise, the camera will no longer be waterproof.
8. Clean the camera with clean water after using underwater. Allow it to dry naturally before using again.
9. This camera is not waterproof unless the battery cover are closed.

CAUTIONS

- This is a 5K action camera, It is normal for the housing to exert heat under use.
- Don't expose the product directly to high temperatures over 45°C.
- Please properly protect well the lens and screen of camera after using.
- Keep it safe from falling and dropping.
- Keep it distance from any strong magnetic interference objects like electrical machine to avoid strong radio waves that might be damaging the product and affect the sound or image quality.
- In case of overheating, unwanted smoke from the device, unplug it immediately from the power outlet to prevent hazardous fire.
- Keep it safety from children while on charging.
- Stored the device in a cool, dry and dust free location.
- Do not modify the camera it in any way,if the camera has been detached,the warranty will be void.

OVERVIEW OF CAMERA

The camera is an all-weather action camera, equipped with 6-axis gyroscope EIS technology, which can take clear 20MP photos and capture stable videos at 5k/30fps. This camera adopting water tight seal and a hydrophobic coating on the camera body, which can reach IP68 waterproof level. This action camera is weatherproof and distinct to unlock all the filming scenarios and ease your vlogging experience. Its water-resistant design can protect the action camera from rain, snow and water splashing.



1. Lens
2. Speaker
3. Internal Microphone
4. Shutter Button / Select Button
5. Front Screen
6. Battery Waterproof Cover
7. Indicator
8. Power Button / Mode Button
9. Touch Screen

Button Operation Instructions

Power Button / Mode Button

Press and hold seconds to power on/off.

Press shortly to switch between Video Mode and Photo Mode.

Shutter Button

Press shortly to start/stop recording video.

Press shortly to shoot photos.

Press and hold seconds to switch between front and rear screens.

Notes

- You can't switch screens during recording or in Setting Mode.
- Front and rear screens cannot work at the same time.

GETTING STARTED

Welcome to your new camera. To capture video and photos, you need a micro SD card (sold separately).

STORAGE/MICRO CARDS

We strongly recommend to use the branded memory cards purchased from regular channels for maximum reliability and stability during recording and in high vibration activities.

UHS-III rating at least for 4K Video resolution

(at least 60MB/S or above read and writing speed)

- Capacity up to 128GB (FAT32)

The bigger memory may have an effect on the compatibility with the camera.

Notes

- Please format the micro SD, micro SDHC and micro SDXC memory card on the camera before using.
- Please insert the memory card in correct way . if not , the card slot maybe damage by the wrong way.
- To keep your micro SD card in good condition, reformat it on a regular basis.
- Reformatting erases all of your content, so be sure to offload your photos and videos first.
- Don't place your Micro SD card near strong magnetic objects to avoid data error or loss.
- FAT32 format memory card stops recording when the storage of each file is over 4GB and starts to record again on a new file.

POWERING ON+ OFF

To Power On

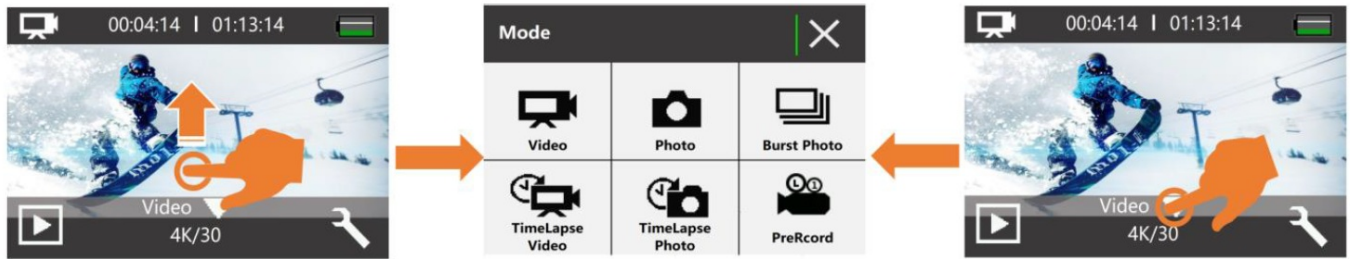
Press and hold the Power button for seconds. The camera beeps while the camera status light is on. When information appears on the LCD display or the camera status screen, your camera is on.

To Power Off

Press and hold the Mode button for three seconds.

OVERVIEW OF SHOOTING MODES

There are 6 shooting modes: Video Mode, Photo Mode, Burst Photo Mode, Time Lapse Video Mode, Time Lapse Photo Mode and Prerecord Mode.



Video Mode

Video Mode is the default mode when you turn on the camera. In Video Mode, press Shutter button, the camera start recording video, press Shutter button again to stop recording video.

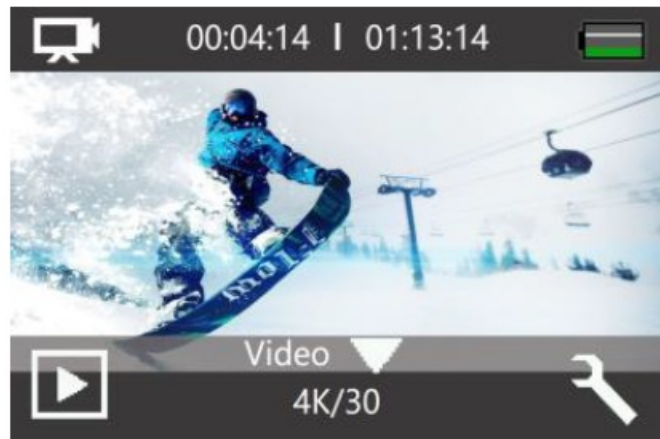
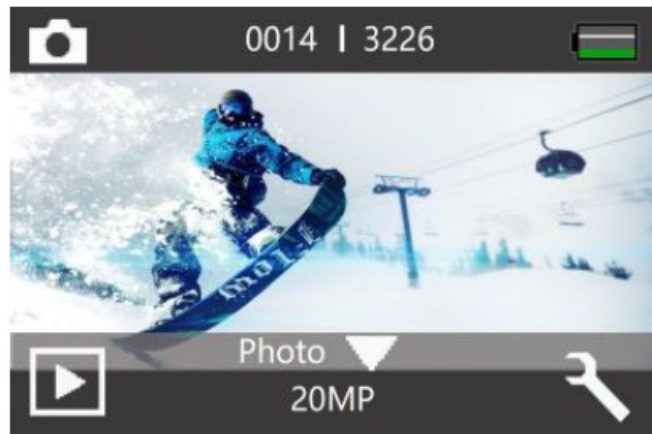
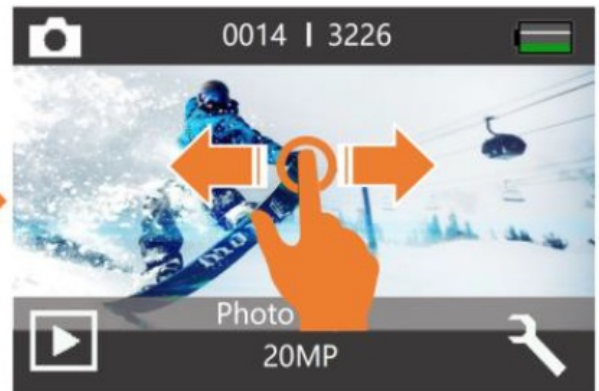
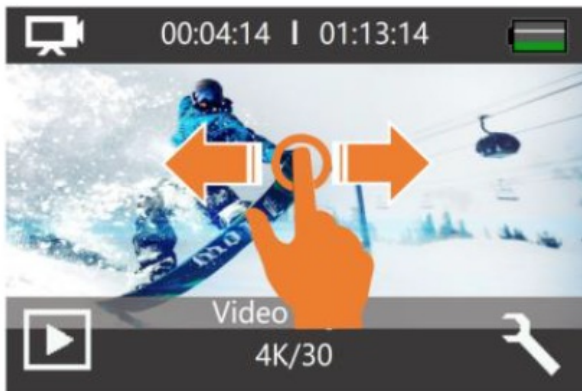


Photo Mode

Press Mode button once to switch to Photo Mode after you turn on camera. In Photo Mode, press Shutter button, the camera takes a photo.



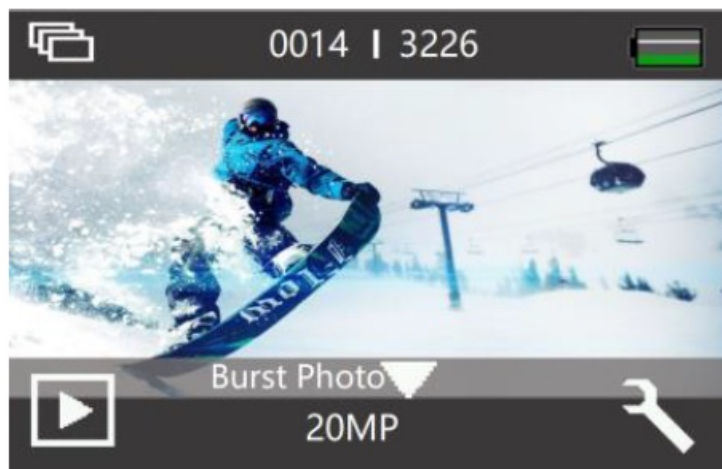
In Video Mode or Photo Mode, quickly slide from right to left or slide from left to right on the touch screen to switch between Video Mode and Photo Mode.



Burst Photo Mode

Burst captures up to 15 photos per time, so it is perfect for capturing fast-moving activities.

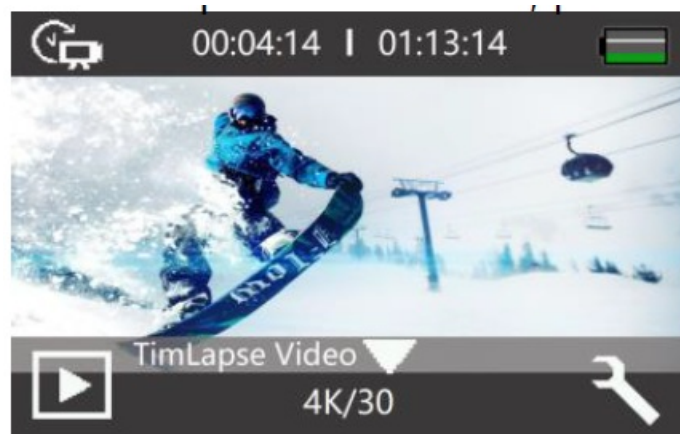
In Burst Photo Mode, press Shutter button, , the camera will continuously capture 3, 7, or 15 photos.



Time Lapse Video Mode

Time Lapse Video creates video from frames captured at specific intervals. This option lets you capture a time lapse event and immediately view or share it as a video. Time Lapse Video is captured without audio.

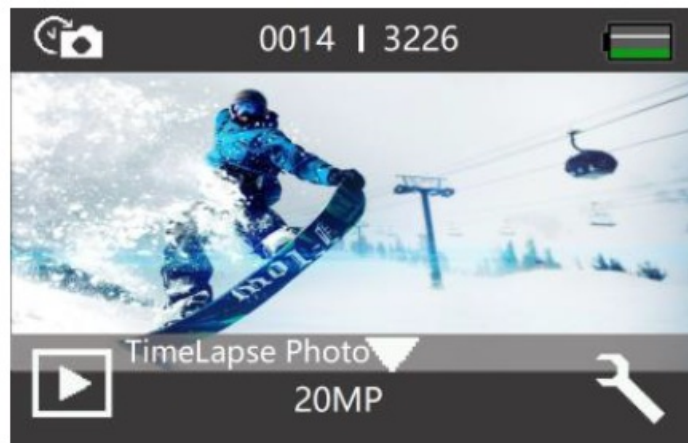
In Time Lapse Video Mode, press the Shutter button, the camera will take a series of videos at the set interval.



Time Lapse Photo Mode

Time Lapse Photo captures a series of photos at specified intervals. Use this mode to capture photos of any activity, then choose the best ones later.

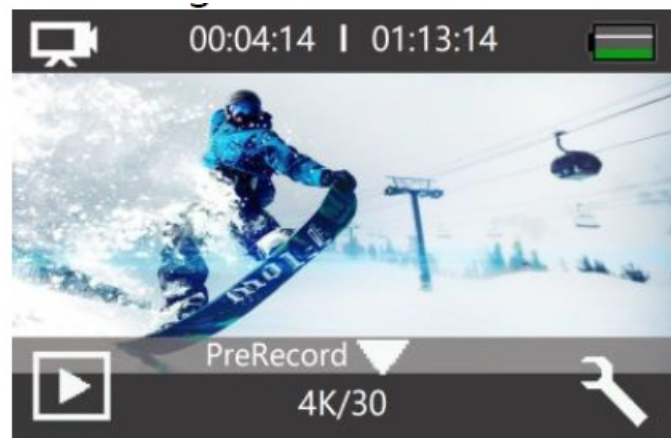
In Time Lapse Photo Mode, press the Shutter button, the camera will take a series of photos at the set interval.



Prerecord Mode

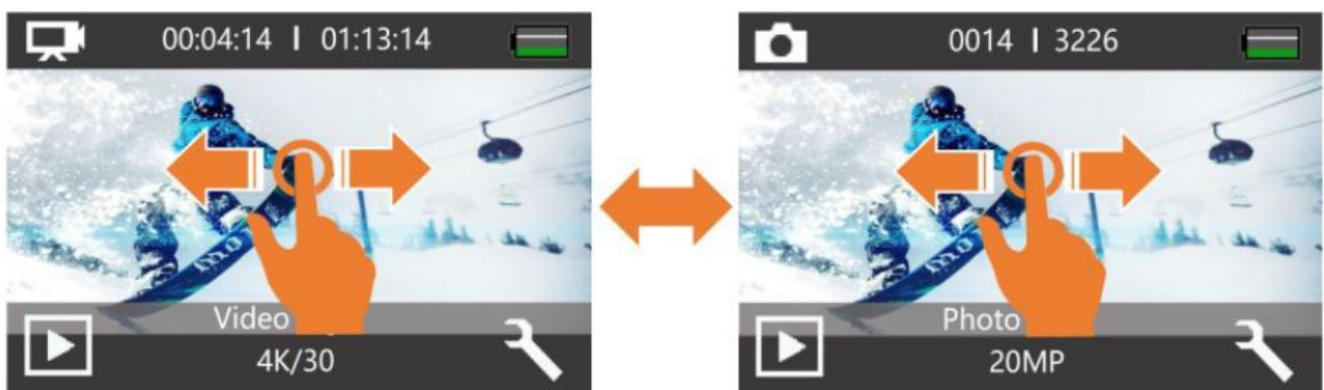
After enabling prerecord, the camera can start recording videos from a few seconds before pressing the shutter button.

The prerecord function is very suitable for recording exciting moments of unexpected activities, such as fishing, etc. In Prerecord Mode, press the Shutter button, the camera will start recording video, press Shutter button again to stop recording video.



Tips:

In the shooting preview interface, quickly swipe left or right on the screen to switch between different video and photo modes.



CUSTOMIZING YOUR CAMERA

There are 3 Setting Mode: Video Setting Mode, Photo Setting Mode and System Setting Mode.

Video Setting Mode

Verified in Video/Time Lapse Video/Prerecord Mode, tap Stetting icon to enter Video/Time Lapse Video/Prerecord Setting Mode.



Notes:

- When capturing video at high resolution or high frame rates such as 4K 60/30fps, the camera may become hot and consume more power, which is normal.
- When capturing video at high resolutions or high frame rates in warm ambient temperatures, the camera may become warm and use more power.
- Image Stabilization is disabled when you select 1080P 120fps or 720P 120/240fps.
- If you turn on EIS, Slow Motion ,Auto Low Light and LDC will not be available automatically.
- FAT32 format Micro SD card stops recording when the storage of each file is over 4GB and starts to record again on a new file. You cannot set 5min video file length when camera is at 4K 60fps, 5min 4K 60fps video file is over 4GB.
- If you turn on Loop Video, Time-Lapse Video, TL Duration and Slow Motion will not be available automatically.
- Time Lapse Video is captured without audio.
- If you use Time-Lapse Video function, the camera can not recorded the video over 30fps.
- If you use Time-Lapse Video function, Loop Video, Slow Motion and Fast Motion will not be available automatically.
- If you want to set Time Lapse Duration, please turn on Time Lapse Interval first.
- Please select 1080P 120FPS, 720P 240FPS or 720P 120FPS when you want to record slow motion movie.
- If you use Slow Motion function, EIS, Time-Lapse Video and Fast Motion will not be available automatically.
- Using as a dash cam, we suggest to turn on the Loop Video, Driving Mode and Screen Saver at same time.

Photo Setting Mode

Verified in Photo/Burst Photo/Time Lapse Photo Mode, tap Stetting icon to enter Photo/Burst Photo/Time Lapse Photo Setting Mode.

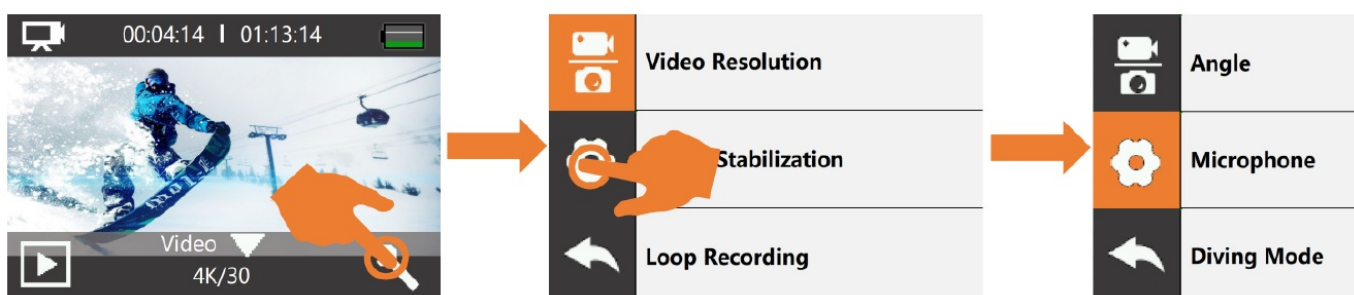


Notes:

- If use Long Exposure function, Time Lapse Photo, TL Duration, Burst Photo and Delay Timer will not be available automatically.
- If use Time Lapse Photo function, Burst Photo, Delay Timer and Long Exposure will not be available automatically.
- If you want to use TL Duration, please turn on Time Lapse Photo interval first.
- If use Burst Photo function, Time Lapse Photo, TL Duration and Long Exposure will not be available automatically.

System Setting Mode

Verified in Video Mode or Photo Mode, tap Stetting icon to enter Video Setting Mode or Photo Setting Mode, then tap System Setting icon to enter System Setting Mode:



Notes:

- Snorkeling mode provides color correction while capturing footage in blue water or clear freshwater at depths of 5 to 33ft (1.5 to 10m)
- If the battery is removed from the camera for an extended period of time, the date and time will be reset automatically.
- Software version is the main information of firmware upgrade, troubleshooting and after-sales. If necessary, please provide the software version information to our after-sales team so that we can serve you in time.

CONNECTING TO THE APP

The Wi-Fi App lets you control your camera remotely using a smart phone or tablet. Features include full camera control, live preview, playback and sharing of selected content and more.

Download and Install iSmart DV2 app

Option 1: Download the iSmart DV2 App or to your phone from the Google Play or Apple App Store.

Option 2: Scan the QR code below to download the iSmart DV2 App or to your phone.



For Andriod Device



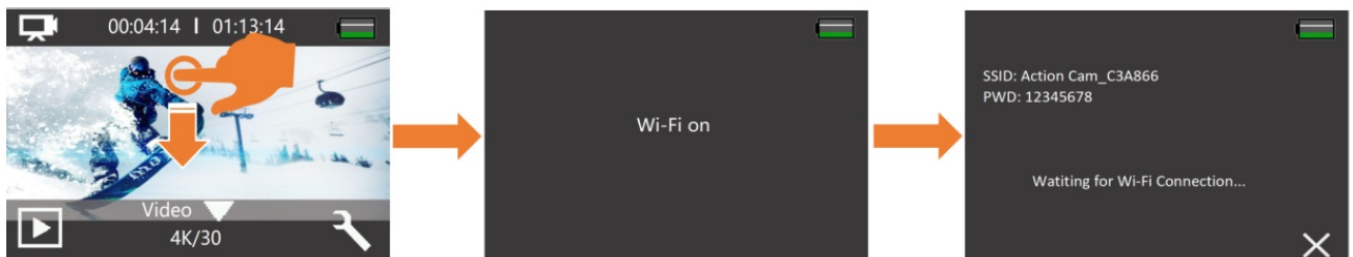
For IOS Device

Notes:

Google, Android, Google play, App Store and other marks are the trademarks of Google LLC.

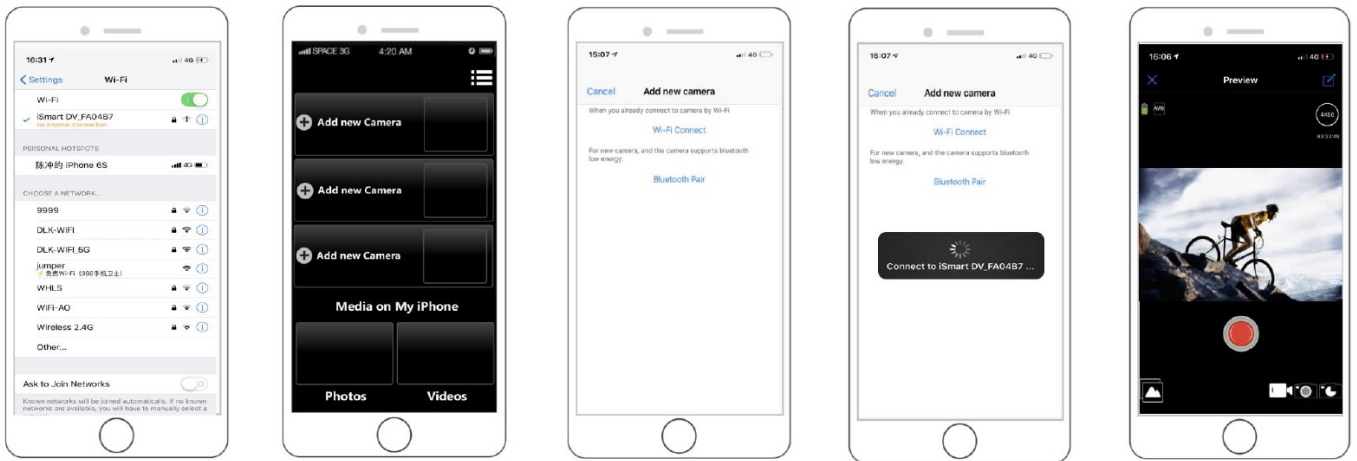
Turn On / Off Camera Wi-Fi

Turn on the camera, and verified it is in Video/Photo mode, slide down on the screen to turn on the camera's WIFI



Connect to the iSmart DV2 APP

1. Turn on Wi-Fi in camera System Setting;
2. Turn on Wi-Fi Setting of your mobile device, connect to the Wi-Fi SSID named "iSmart DV__xxxxxx (Random serial number)";
3. Enter the password: "1234567890";
4. Launch the app "iSmart DV2" on your phone.
5. Tap "Add new camera";
6. Tap "Wi-Fi Connect";



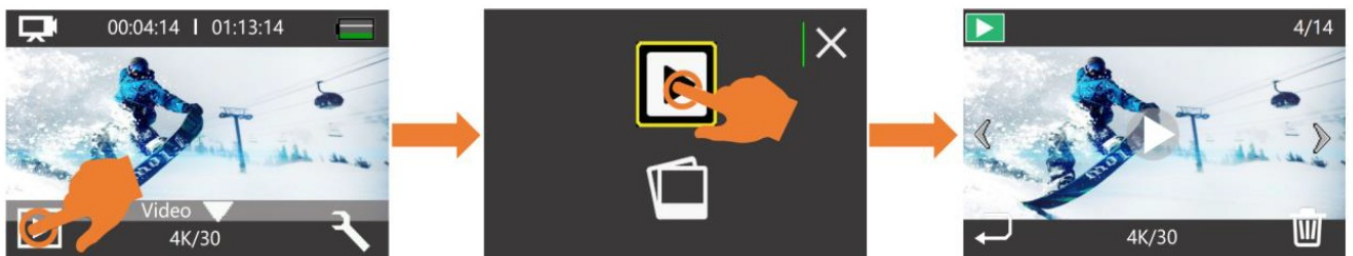
PLAYBACK YOUR CONTENT

You can playback your content on the camera's display, your computer, TV, or smartphone/tablet. You can also play back content by inserting the memory card directly into a device, such as a computer or compatible TV. With this method, playback resolution depends on the resolution of the device and its ability to play back that resolution.

There are 2 Playback Mode: Video Playback Mode and Photo Playback Mode. In Playback Mode, You can playback or delete your content on the camera.



Playback videos and photos on your camera



1. Turn on camera.
2. Tap Playback icon at the left corner of the screen to enter playback mode.
3. Tap video file icon or photo file icon.
4. Tap Forward or Backward icon to playback video or photo files.
5. Tap video playback icon to playback video in full-screen view.
6. To exit the video or photo files, tap return icon.

Note: If your memory card contains a lot of content, it might take a minute for it to load.

Delete videos and photos on your camera

1. Enter playback mode.
2. Tap video file icon or photo file icon .
3. Tap Forward or Backward icon to locate the video or photo file you want to delete.
4. Tap . The screen shows “Delete this file? Yes/No”.
5. Tap “Yes”, the selected file will be deleted.

BATTERY

The camera contains sensitive components, including the battery. Avoid exposing your camera to very cold or very hot temperatures. Low or high temperature conditions may temporarily shorten the battery life or cause the camera to temporarily stop working properly. Avoid dramatic changes in temperature or humidity when using the camera, as condensation may form on or within the camera.

BATTERY STORAGE AND HANDLING

- Do not store in temperature above 140°F/60°C.
- Avoid exposing your camera to very cold or very hot temperatures. Low or high temperature conditions may temporarily shorten the battery life or cause the camera to temporarily stop working properly. Avoid dramatic changes in temperature or humidity when using the camera, as condensation may form on or within the camera.
- Do not dry the camera or battery with an external heat source such as a microwave oven or hair dryer.
- Damage to the camera or battery caused by contact with liquid inside the camera is not covered under the warranty.
- Do not store your battery with metal objects, such as coins, keys or necklaces. If the battery terminals come in contact with metal objects, this may cause a fire.
- Do not make any unauthorized alterations to the camera. Doing so may compromise safety, regulatory compliance, performance, and may void the warranty.
- Please do not throw the camera or its battery to the garbage, find a specific recycling point for it.

WARNING

- Do not drop, disassemble, open, crush, bend, deform, puncture, shred, microwave, incinerate or paint the camera or battery.
- Do not insert foreign objects into the battery opening on the camera.
- Do not use the camera or the battery if it has been damaged – for example, if cracked, punctured or harmed by water.

Disassembling or puncturing the battery can cause an explosion or fire.

CHARGING THE BATTERY

1. Connect the camera to USB power supply (5V/1A commended).
2. The charging status light remains ON while the battery is charging.
3. The charging status light will turn OFF when the battery is fully charged.

Notes

- Charging time: 4-hours for 5V 1A power supply
- Please make sure the camera is shuttled down while charging.
- Remove the battery before using as a dash camera and use 5V/1A brand-name car charger.

MAXIMIZING BATTERY LIFE

If the battery reaches 0% while recording, the camera saves the file and powers off.

To maximize battery life, follow these guidelines when possible:

- Turn off Wireless Connections
- Capture video at lower frame rates and resolutions
- Use Screen Saver setting.

2-IN-1 WIRELESS TRANSMITTER

The 2-in-7 transmitter is designed specifically for our camera and uses 2.4G low latency wireless transmission technology, which is compatible with wireless microphone and wireless remote control functions.

Remark: If the camera you purchased does not have an optional of 2-in-1 transmitter, the 2-in-1 transmitter will not be included in the packaging.

overview of 2-in-1 transmitter



1. On/Off Button
 1. Power on: Press and hold for 3 seconds.
 2. Shutdown: In the power on state, press and hold for 3seconds.
2. Pairing Button
 1. Pairing On: Press and hold for 3 seconds to enable pairing with the camera.
 2. Pairing Off: After pairing, press and hold for 3 seconds again to cancel pairing with the camera.
3. Record button
 1. Start recording: When the camera is turned on, briefly press to start recording.
 2. Stop recording: During the recording process, short press to stop recording.
4. Work indicator light: blue light, red light
 1. Blue light: working state/fully charged
 2. Red light: charging state
5. Pairing indicator Light

1. Paired successfully: the blue light remains on-Waiting for pairing: Blue light flashing
6. Photo button
 1. Short press to take a photo
7. Pickup hole
8. Back clip
9. Charging port

FCC Warning

This equipment has been tested and found to comply with the limits for a Class B digital device, pursuant to part 15 of the FCC Rules. These limits are designed to provide reasonable protection against harmful interference in a residential installation. This equipment generates, uses and can radiate radio frequency energy and, if not installed and used in accordance with the instructions, may cause harmful interference to radio communications. However, there is no guarantee that interference will not occur in a particular installation. If this equipment does cause harmful interference to radio or television reception, which can be determined by turning the equipment off and on, the user is encouraged to try to correct the interference by one or more of the following measures:

- Reorient or relocate the receiving antenna.
- Increase the separation between the equipment and receiver.
- Connect the equipment into an outlet on a circuit different from that to which the receiver is connected.
- Consult the dealer or an experienced radio/TV technician for help.


Caution: Any changes or modifications to this device not explicitly approved by manufacturer could void your authority to operate this equipment.

This device complies with part 15 of the FCC Rules. Operation is subject to the following two conditions:

(1) This device may not cause harmful interference, and (2) this device must accept any interference received, including interference that may cause undesired operation.

This equipment complies with FCC radiation exposure limits set forth for an uncontrolled environment. This equipment should be installed and operated with minimum distance 0cm between the radiator and your body.

Documents / Resources

	<p>HIPPO V18I Action Camera [pdf] Instruction Manual 2BFKC-V18I, 2BFKCV18I, v18i Camera, V18I Action Camera, V18I, Action Camera, Camera</p>
---	--

References

- [User Manual](#)