

**HIOS®**  
**HIOS VMS**  
**Series Vertical**  
**Operation**  
**Screwdriver**  
**Stands**



# **HIOS VMS Series Vertical Operation Screwdriver Stands Instruction Manual**

[Home](#) » [HIOS](#) » HIOS VMS Series Vertical Operation Screwdriver Stands Instruction Manual 

## **Contents**

- [1 HIOS VMS Series Vertical Operation Screwdriver Stands](#)
- [2 PRODUCT INTRODUCTION](#)
- [3 Specifications](#)
- [4 Screwdriver Stand Parts](#)
- [5 Accessories](#)
- [6 External Dimensions](#)
- [7 Setup Instructions](#)
- [8 Frequently Asked Questions](#)
- [9 Documents / Resources](#)
  - [9.1 References](#)

**HIOS®**

**HIOS VMS Series Vertical Operation Screwdriver Stands**



## **PRODUCT INTRODUCTION**

The Vertical-Operation Screwdriver Stands keep HIOS Screwdrivers in vertical position and help insure normal and efficient operation, thereby minimizing cases of improper fastening screws. When the operator release the driver, it automatically returns to its pre-set position.

The following table shows the respective series of HIOS Screwdrivers that can be used with the three Vertical-Operation Screwdriver Stands.

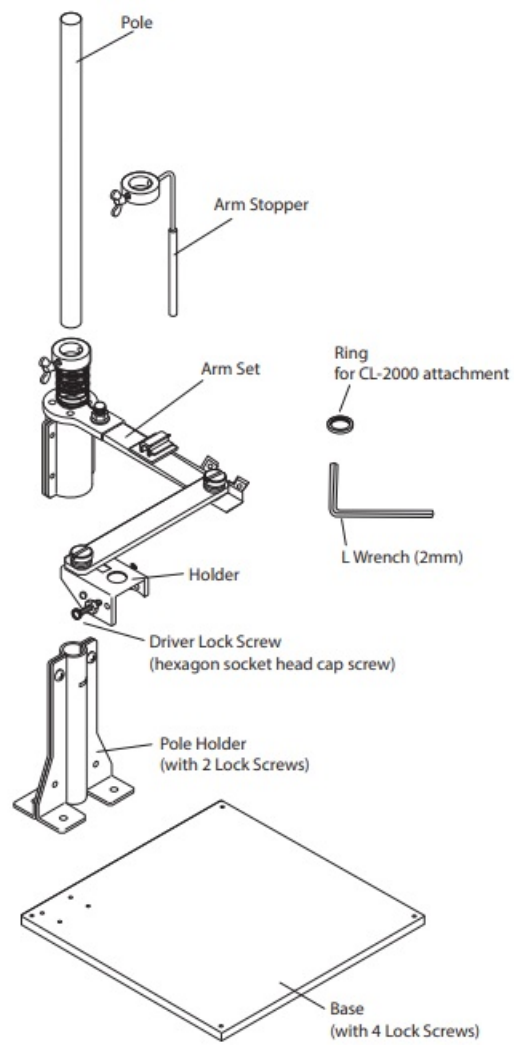
### **Caution**

Note that HIOS Vertical-Operation Screwdriver Stands cannot be used with screwdrivers made by other manufacturers.

## **Specifications**

Models	VMS-40	VMS-50	VMS-50VZ	Holder Model NO. (order code)	
Pole Height	515mm	615mm	615mm		
Weight	2.5kg	2.65kg	2.65kg		
BL Series	BL-2000/BL-3000/BL-5000		—	VMS40-0180	Standard
CL Series	CL-2000/CL-3000/CL-4000/CL-6500/CL-7000				
VZ Series	—		All models (except VZ-1510 Series)	VMS-0900-VZ18	
PG Series	—	PG-3000		VMS-0900-PG3	Optional
		PG-5000		VMS-3910-PG5	
		PG-7000		VMS-0900-PG7	
BLG-ZERO1 Series	BLG-4000ZERO1/BLG-5000ZERO1		—	VMS-0900-BLG45	
BLG-BC2 Series	BLG-4000BC2/BLG-5000BC2				
BLG-BC1 Series	BLG-4000BC1/BLG-5000BC1				
BLG Series	BLG-4000/BLG-5000				
BL Series	BL-7000			VMS-0900-BL7	
VB Series	—	VB-1510/VB-1510PS		VMS-0910-PG5	
		VB-1820/VB-3012		VMS-0900-PG7	
		VB-1820PS/VB-3012PS		VMS-0900-VB18PS	
VZ Series	VZ-1510/VZ-1510PS		—	VMS50-0190	

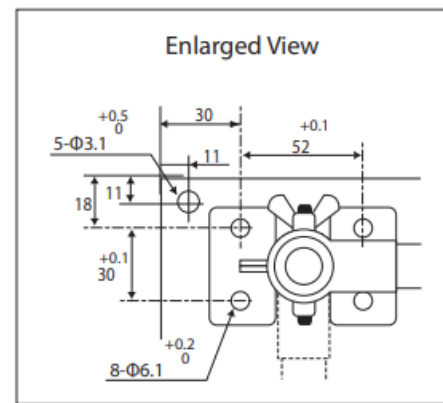
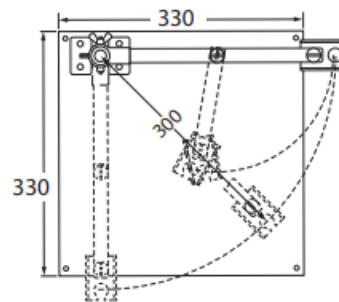
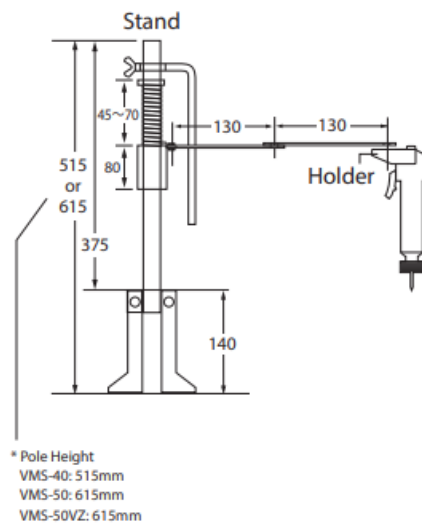
## Screwdriver Stand Parts



## Accessories

model	VMS-40 VMS-50	VMS-50VZ
Pole	○	○
Arm Stopper	○	○
Arm-Set	○	○
Pole Holder	○	○
Base	○	○
Ring (for CL-2000)	○	—
L Wench	○	—

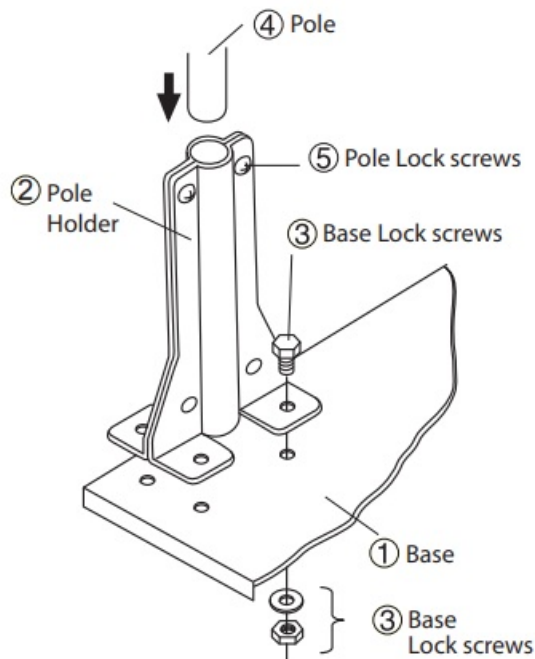
## External Dimensions



## Setup Instructions

### 1. Attach Pole to Base.

Use the four Lock screws③ to attach the Pole Holder② to the Base①. Next, insert the Pole ④ into the Pole Holder ② and fix, using the two Pole Lock screws ⑤.



## 2. Attach the screwdriver to Holder.

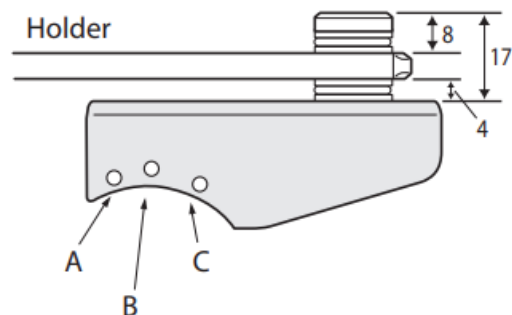
### 1. When using Models VMS-40 and VMS-50

- The holes (in the Driver Holder) to be used for attaching the screwdriver depend on the model of screwdriver.

Please confirm the screwdriver model to be used.

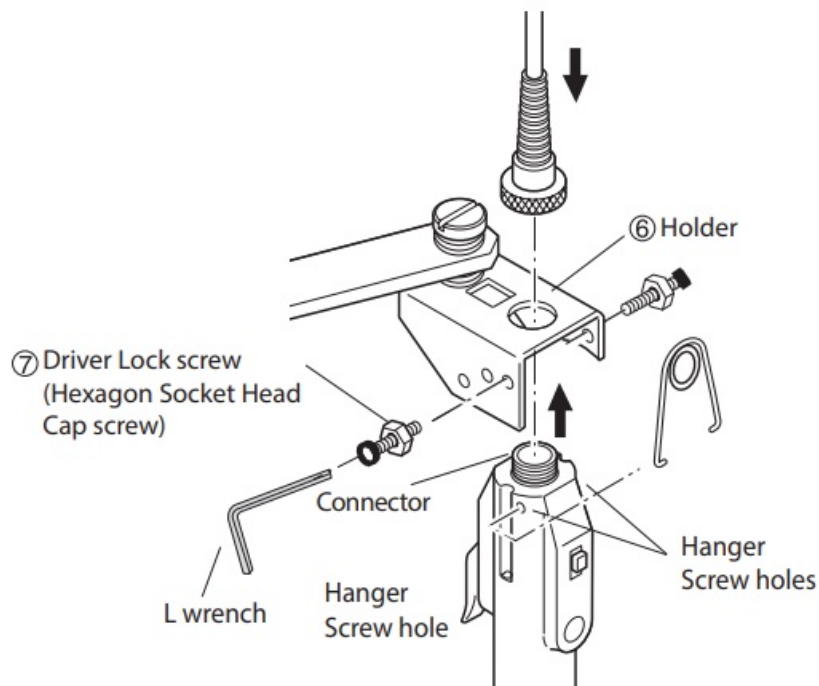
#### Applicable Screwdrivers

A	B	C
CL-2000 BL-2000	CL-3000/4000	BL-3000/5000 CL-6500/7000



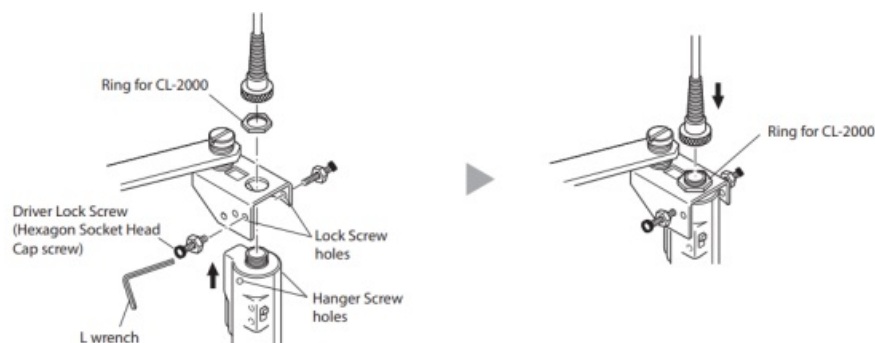
unit: mm

- Remove the Hanger and Driver Cord from the screwdriver before attaching it.
- Loosen the two Driver Lock screws ⑦ and set the screwdriver as in the right figure so that the Switch Lever faces the Driver Holder.
- It requires a certain amount of force to fit the Driver Connector into the Holder ⑥. Pass the Connector through the Driver Holders.
- Align the Driver Holder Lock Screw holes and Hanger Screw holes, then fasten the Driver Lock screws ⑦.



### Attaching CL-2000 Holder

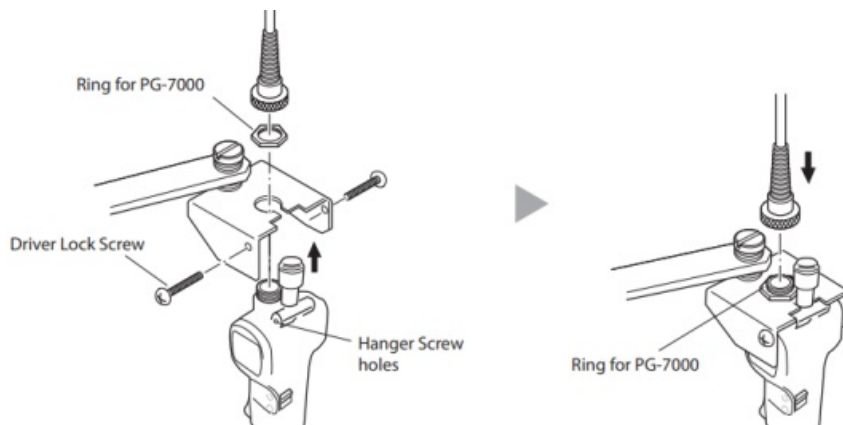
After setting the screwdriver in step 2-1-4, fit ring onto the connector and connect the Driver Cord. Align the Lock Screw holes in the Holder and the Hanger Screw holes, then fasten the Driver Lock screws.



### Attaching VMS-0900-PG7 Holder

\*Spacers are not used on models other than the PG-7000.

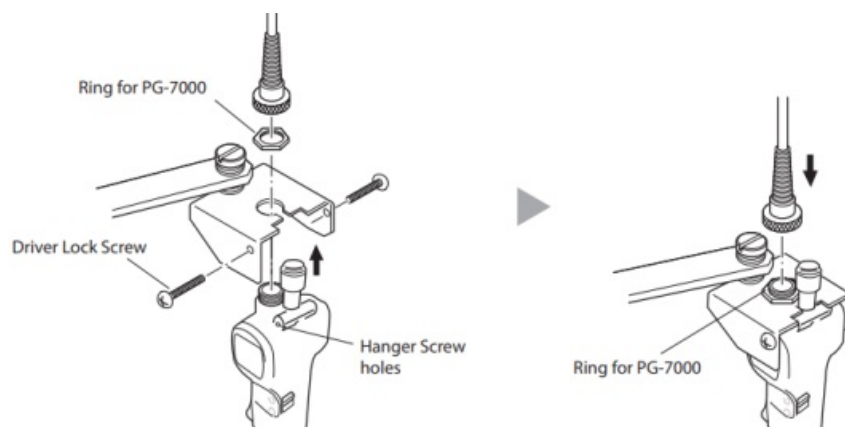
After setting the screwdriver in step 2-1-4, fit ring onto the connector and connect the Driver Cord. Align the Lock Screw holes in the Holder and the Hanger Screw holes, then fasten the Driver Lock screws



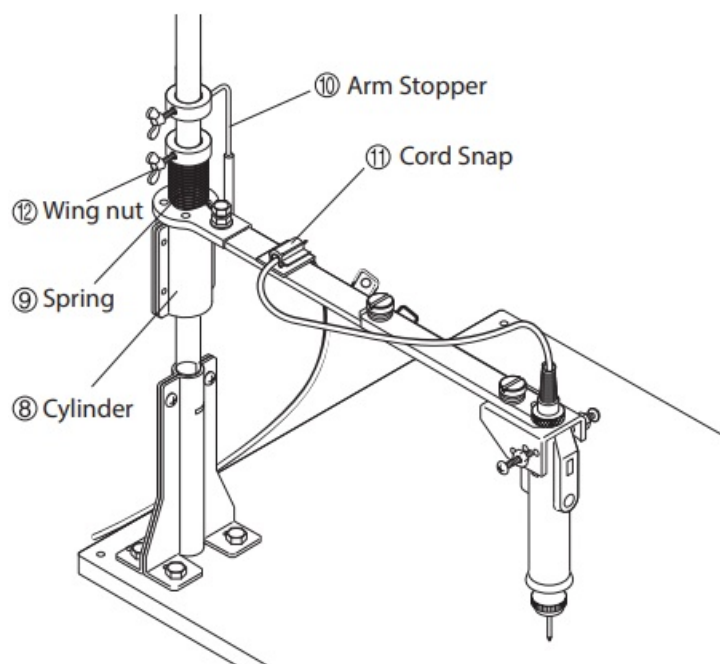
## 2. When using Model VMS-50VZ

1. 2-2-1 Remove the Hanger from the VZ Screwdriver and Loosen the Connector Cap. (Fig. 1) 2-2-2 Loosen the two Driver Lock screws and set the driver as in the figure. (Fig. 2)

Pass the Driver Connector through the Holder and fasten the Connector Cap to fix the driver.  
Align the Lock Screw holes in the Holder and the Hanger Screw holes, then fasten the Driver Lock screws.



3. Pass the Pole through the Cylinder®, Spring® and Arm Stopper®, then fix the Driver Cord in the Cord Snap to refrain it from interfering operation.
4. To adjust the screwdriver to a comfortable operating height, loosen the Wing nut and move the Cylinder up or down as necessary.
5. The screwdriver automatically returns to its pre-set position when the operator release it. Its position can be set by adjusting the Arm Stopper.



Check that the screwdriver returns to the desired position when it is released. Now it is ready for use.

#### **HIOS Inc.**

1-35-1 Oshiage, Sumida-ku Tokyo, Japan 131-0045  
TEL: 81-3-6661-8821 FAX: 81-3-6661-8828


### **Frequently Asked Questions**

**Q: Can these stands be used with screwdrivers from other brands?**

A: No, the stands are only compatible with HIOS Screwdrivers and should not be used with screwdrivers from other manufacturers.



Documents / Resources

	<p><a href="#">HIOS VMS Series Vertical Operation Screwdriver Stands</a> [pdf] Instruction Manual VMS-40, VMS-50, VMS-50VZ, BL-2000, BL-3000, BL-5000, CL-2000, CL-3000, CL-4000, CL-6500, CL-7000, VMS Series Vertical Operation Screwdriver Stands, VMS Series, Vertical Operation Screwdriver Stands, Operation Screwdriver Stands, Screwdriver Stands, Stands</p>
---	---

References

- [User Manual](#)

Manuals+. [Privacy Policy](#)

This website is an independent publication and is neither affiliated with nor endorsed by any of the trademark owners. The "Bluetooth®" word mark and logos are registered trademarks owned by Bluetooth SIG, Inc. The "Wi-Fi®" word mark and logos are registered trademarks owned by the Wi-Fi Alliance. Any use of these marks on this website does not imply any affiliation with or endorsement.