




## HINKLEY 5536BZ-LMA Luminaire Instruction Manual

[Home](#) » [HINKLEY](#) » HINKLEY 5536BZ-LMA Luminaire Instruction Manual 

# HINKLEY

5536BZ-LMA Luminaire

Item No:

5536LMA

Instruction Manual

### Contents

[1 5536BZ-LMA Luminaire](#)

[2 Junction Box Cover  
Instruction](#)

[3 Assembly Instructions](#)

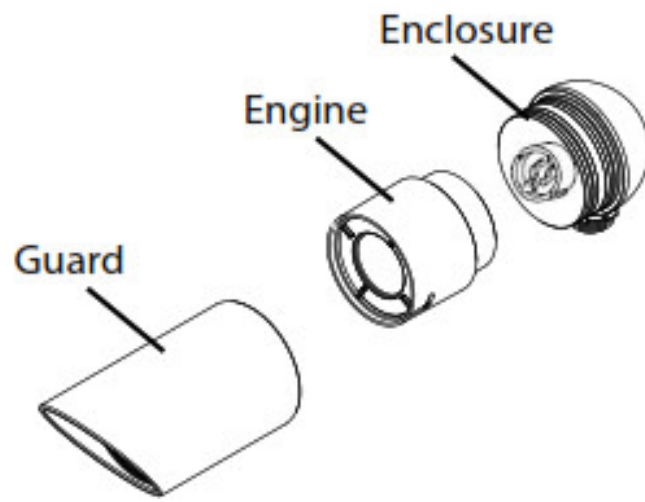
[4 Documents / Resources](#)

[4.1 References](#)

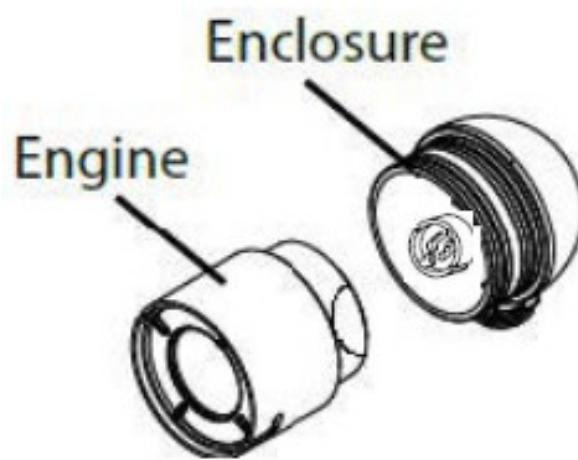
[5 Related Posts](#)

### 5536BZ-LMA Luminaire

#### Drawing 1



**Drawing 2**



**5536BZ-LMA**



**start here**

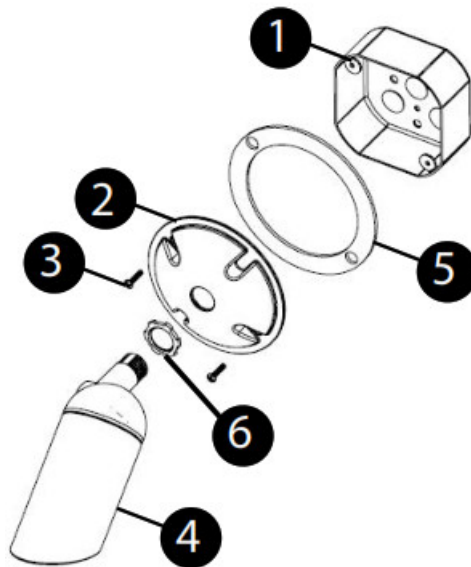
1. Find a clear area in which you can work.
2. Unpack fixture and glass from carton.
3. Carefully review instructions prior to assembly.

#### LUMINAIRE MOUNTING: (for typical ground stake mounting)

1. To prevent electrical shock, disconnect transformer from electrical supply before installation or service.
2. Run wire from Luminaire through mounting hole in top of ground stake.
3. Attach Luminaire to ground stake by threading to the mounting hole in stake until it fits snugly against the bottom of stem.
4. Place stake in desired position and insert into ground until the flange of stake is flush with ground.
5. Strip the two wire leads from the Luminaire and connect to the main supply wire using the provided wirenuts and silicone tube

To wire fixture please connect supply neutral wire to white fixture wire, and connect live supply wire to black fixture wire. Use green wire to ground fixture.

#### **Drawing 1**

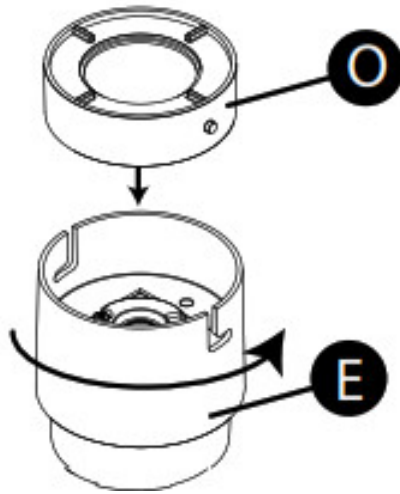


#### **Junction Box Cover Instruction**

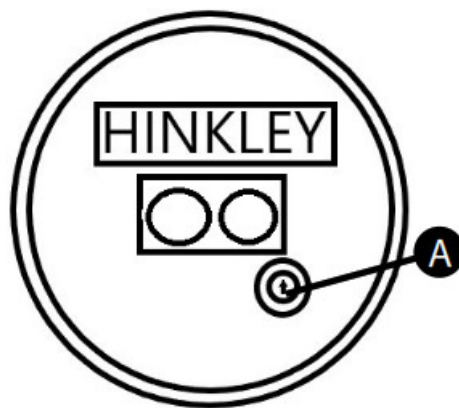
The fixture can be installed to ground by ground stake, also can be installed to junction box use cover instructions listed below

1. Make sure junction box power is off
2. Slip fixture wires through hole in the center junction box of cover (2) and make wiring connections between junction box (1) and fixture (4)
3. Secure junction box cover (2) and gasket (5) to junction box (1) using screws (3)
4. Thread conduit nut (6) onto fixture (4)
5. Next thread on fixture (4) to box cover (2). Use conduit nut (6) to tighten fixture (4) into place
6. Fixture can now be powered on

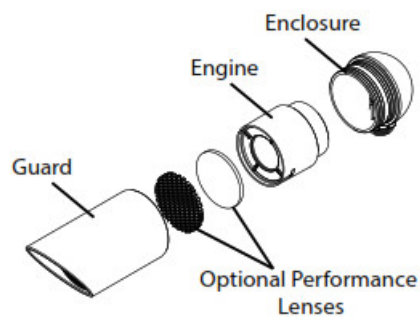
#### **Drawing 1 – Engine Assembly**



**Drawing 2 LED wattage adjustment**



**Drawing 3 – Fixture Assembly Example**



## Assembly Instructions

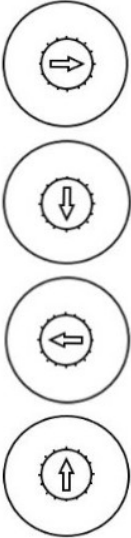
### start here

1. In order to lamp the fixture you need to first assemble the engine.
2. Take the optic (O) and push it into the top of the engine (E) and twist it into place – see Drawing 1.  
**Note:** Engine optic (O) comes in 3 types.
3. Hold the Lumacore with the Hinkley Logo so that its readable. The rotational switch (A) can be adjusted by your fingers or a small flat bladed screwdriver.  
 Rotate until the switch falls into a stop. For reference, the wattage settings are roughly akin to hours on a

standard clock face. -See Drawing 2

1. After the engine is assembled, you can lamp the fixture by pushing the engine into place inside the enclosure.
2. Finish by reassembling the fixture – See Drawing 3

## IOUTPUT SWITCH SETTINGS

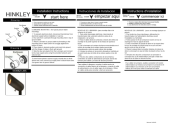
	3 Watts, 3.2 VA, 260 Lumens
	5 Watts, 5.3 VA, 350 Lumens
	8 Watts, 7.8 VA, 475 Lumens
	12 Watts, 12.4 VA, 750 Lumens

Black – Flood, 60°	White – Spot, 20°	Grey – Medium Spread, 40°
Noir – Inonder, 60°	Blac – Place, 20°	Gris – propagation moyenne, 40°
Negro – Inundar, 60°	Blonco – Lugar, 20°	Gris – propagación media, 40°

# HINKLEY

33000 Pin Oak Parkway, Avon Lake,  
OH 44012 800.446.5539  
440.653.5500  
[hinkley.co](http://hinkley.co)

## Documents / Resources

	<a href="#">HINKLEY 5536BZ-LMA Luminaire</a> [pdf] Instruction Manual 5536BZ-LMA Luminaire, 5536BZ-LMA, Luminaire
---	--

## References

- H [HINKLEY - Lighting and Ceiling Fans – Home Page](#)