

Contents [[hide](#)]

- [1 HILTI SDK2-PDK2 Setting Tool](#)
- [2 Product Using Instructions](#)
- [3 Installation Instructions](#)
- [4 Choose options](#)
- [5 Features & Applications](#)
- [6 Applications](#)
- [7 Technical Data](#)
- [8 FAQ](#)
- [9 Documents / Resources](#)
 - [9.1 References](#)



HILTI SDK2-PDK2 Setting Tool

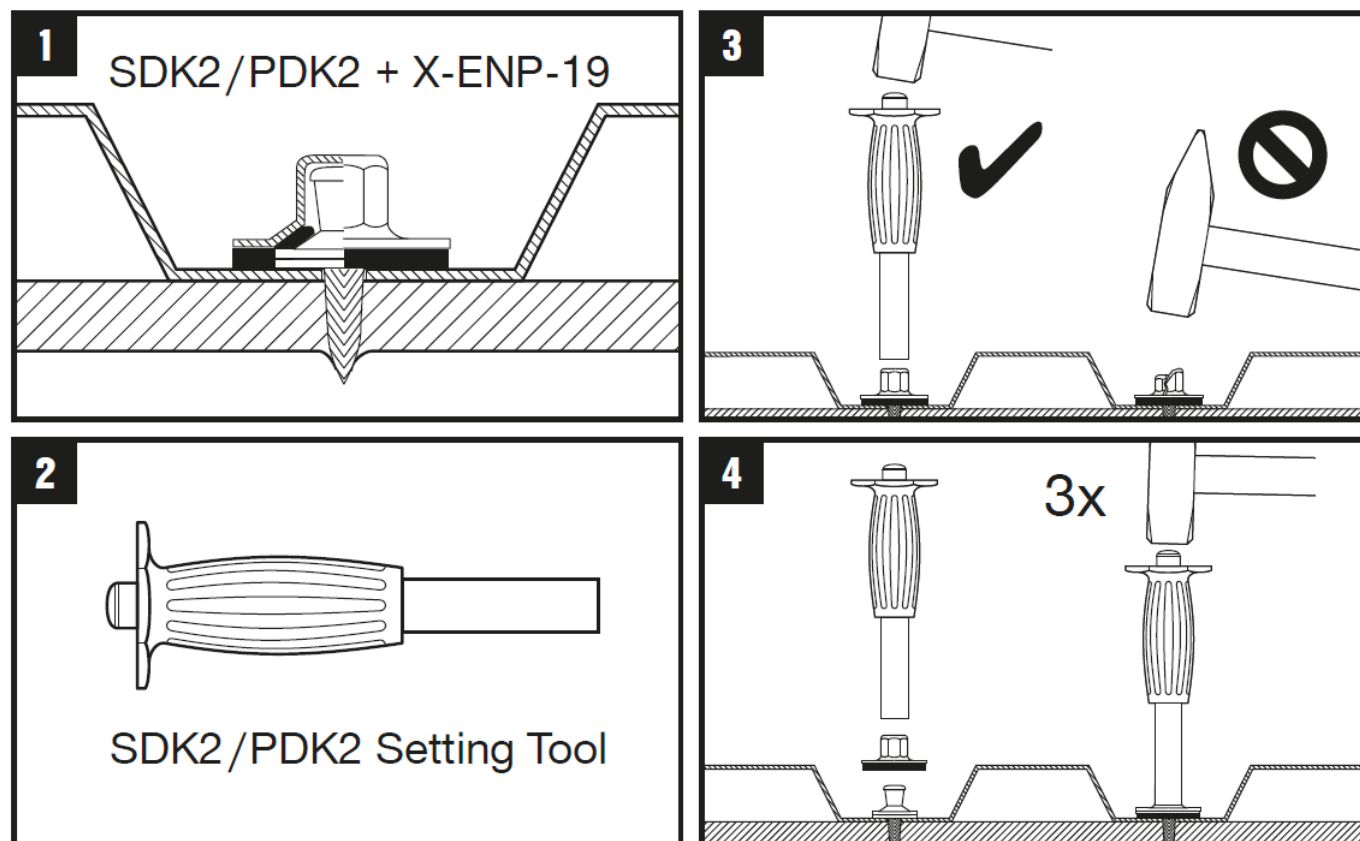


Product Using Instructions

- Combine the SDK2/PDK2 with the X-ENP-19 component.
- Ensure the parts are aligned correctly as shown in the diagram.

- Use the SDK2/PDK2 Setting Tool. The tool should be positioned as illustrated to ensure proper installation.
- Use a hammer to gently tap the setting tool. Ensure the tool is upright and stable.
- Avoid hitting the tool at an angle to prevent damage.
- Repeat the hammering process three times to secure the installation.
- Ensure each strike is firm and consistent.

Installation Instructions



Sealing cap for nails used in exposed roofs and cladding

- Application: Waterproofing
- For use with (tools): BX 3, DX 351, DX 460, DX 5, DX 6, GX 120, GX 3
- Corrosion protection: Stainless steel A4(316) or equivalent

Choose options

- Height: 0.6 in
- Diameter: 7/8 in
- Fastener shank length: 15/16 in

- Pack size: 100 pc

Product options

- Sealing cap SDK2 #52708

Quantity

- 1/ Package

Total pieces

- 100

You can not see your company prices

- Please log in or register to see your company prices. Prices vary for Hawaii, Alaska, and U.S. territories.

Features & Applications

Features

- Water-resistant and visually clean
- Easy assembly with the setting tool and hammer

Applications

- Water-resistant sealing of X-ENP-19 nails in steel fastening applications
- SDK2 stainless steel sealing caps for water resistance in roof deck applications
- PDK2 plastic caps for water resistance in siding applications

Technical Data

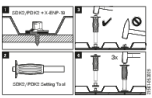
- Application: Waterproofing
- For use with (tools): BX 3, DX 351, DX 460, DX 5, DX 6, GX 120, GX 3
- Corrosion protection: Stainless steel A4(316) or equivalent

- Environmental Conditions: Dry indoor
- Approvals: N/A
- Base materials: Steel
- Product Class: Premium

FAQ

- **What is the purpose of the SDK2/PDK2?**
 - The SDK2/PDK2 is used for secure installations in construction or assembly projects.
- **How many times should I strike the setting tool?**
 - You should strike the setting tool three times to ensure a secure fit.
- **Can I use any hammer for the installation?**
 - Yes, but ensure the hammer is used correctly to avoid damaging the components.

Documents / Resources

	HILTI SDK2-PDK2 Setting Tool [pdf] Instruction Manual SDK2, PDK2, SDK2-PDK2 Setting Tool, SDK2-PDK2, Setting Tool
--	--

References

- [User Manual](#)

 HILTI, PDK2, SDK2, SDK2-PDK2, SDK2-PDK2 Setting Tool, Setting

 HILTI Tool

Leave a comment

Your email address will not be published. Required fields are marked *

Comment *

Name

Email

Website

☐ Save my name, email, and website in this browser for the next time I comment.

Post Comment

Search:

e.g. whirlpool wrf535swhz

Search

[Manuals+](#) | [Upload](#) | [Deep Search](#) | [Privacy Policy](#) | [@manuals.plus](#) | [YouTube](#)

This website is an independent publication and is neither affiliated with nor endorsed by any of the trademark owners. The "Bluetooth®" word mark and logos are registered trademarks owned by Bluetooth SIG, Inc. The "Wi-Fi®" word mark and logos are registered trademarks owned by the Wi-Fi Alliance. Any use of these marks on this website does not imply any affiliation with or endorsement.