



HILTI RT 6-A22 Cordless Rivet Tool Instruction Manual

[Home](#) » [HILTI](#) » HILTI RT 6-A22 Cordless Rivet Tool Instruction Manual 

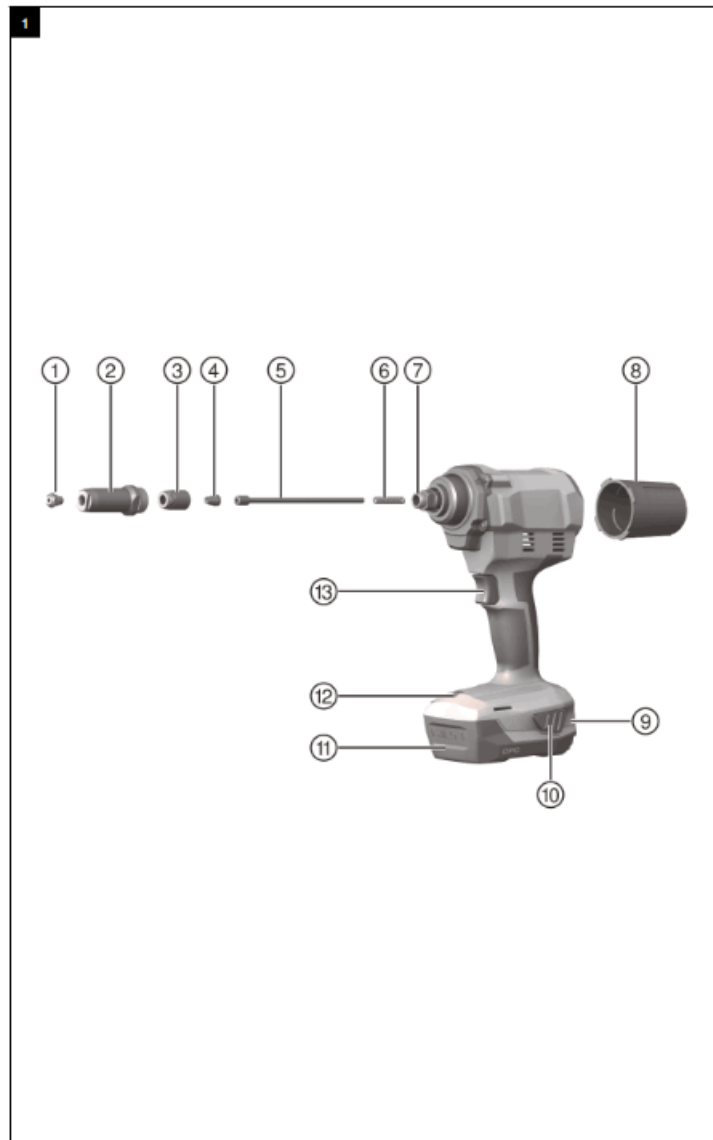


6-A22 Cordless Rivet Tool Instruction Manual

Contents

- [1 RT 6-A22 Cordless Rivet Tool](#)
- [2 Information about the operating instructions](#)
- [3 Safety](#)
- [4 Description](#)
- [5 Technical data](#)
- [6 Preparations at the workplace](#)
- [7 Types of work](#)
- [8 Care and maintenance of the product](#)
- [9 Transport and storage of cordless tools and batteries](#)
- [10 Troubleshooting](#)
- [11 Disposal](#)
- [12 Manufacturer's warranty](#)
- [13 Documents / Resources](#)
 - [13.1 References](#)
- [14 Related Posts](#)

RT 6-A22 Cordless Rivet Tool



Original operating instructions

Information about the operating instructions

1.1 About these operating instructions

- Read these operating instructions before the product is used or operated for the first time. This is a prerequisite for safe, trouble-free handling and use of the product.
- Observe the safety instructions and warnings in these operating instructions and on the product.
- Always keep the operating instructions with the product and make sure that the product is accompanied by these operating instructions only, when the product is given to other persons.

1.2 Explanation of symbols used

1.2.1 Warnings

Warnings alert persons to hazards that occur when handling or using the product. The following signal words are used:



DANGER !

- Draws attention to imminent danger that will lead to serious personal injury or fatality.



WARNING !

► Draws attention to a potential threat of danger that can lead to serious injury or fatality.







CAUTION !

► Draws attention to a potentially dangerous situation that could lead to personal injury or damage to the equipment or other property.


1.2.2 Symbols in the documentation

The following symbols are used in this document:

	Read the operating instructions before use.
	Instructions for use and other useful information
	Dealing with recyclable materials
	Do not dispose of electric equipment and batteries as household waste

1.2.3 Symbols in the illustrations


The following symbols are used in illustrations:

2	These numbers refer to the corresponding illustrations found at the beginning of these operating instructions
3	The numbering reflects the sequence of operations shown in the illustrations and may deviate from the steps described in the text
11	Item reference numbers are used in the overview illustrations and refer to the numbers used in the product overview section
	This symbol is intended to draw special attention to certain points when handling the product.

1.3 Product-dependent symbols

1.3.1 Symbols on the product

The following symbols can be used on the product:

	Wear eye protection
	Wear ear protection
	Wear a hard hat
	Direct current (DC)
	The power tool supports near-field communication (NFC) technology, which is compatible with iOS and Android platforms.
	Li-ion battery
	Hilti Li-ion battery type series used. Observe the information given in the section headed Intended use.
	Never use the battery as a striking tool.
	Do not drop the battery. Never use a battery that has suffered an impact or is damaged in any other way.

1.4 Product information

HILTI products are designed for professional users and only trained, authorized personnel are permitted to operate, service and maintain the products. This personnel must be specifically informed about the possible hazards. The product and its ancillary equipment can present hazards if used incorrectly by untrained personnel or if used not in accordance with the intended use. The type designation and serial number are printed on the rating plate.

► Write down the serial number in the table below. You will be required to state the product details when contacting Hilti Service or your local Hilti organization to inquire about the product.

Product information

Blind-rivet setting tool, cordless	RT 6
Generation:	1
Serial number:	

1.5 Declaration of conformity

We declare, on our sole responsibility, that the product described here complies with the applicable directives and standards. A copy of the declaration issued by the certification department can be found at the end of this documentation.

The technical documentation is filed here:

Hilti Entwicklungsgesellschaft mbH | Tool Certification | Hiltistrasse 6 | 86916 Kaufering, Germany

Safety

2.1 Safety instructions

2.1.1 General power tool safety warnings

WARNING Read all safety warnings, instructions, illustrations and specifications provided with this power tool. Failure to follow all instructions listed below may result in electric shock, fire and/or serious injury. Save all warnings and instructions for future reference.

The term “power tool” in the warnings refers to your mains-operated (corded) power tool or battery-operated (cordless) power tool.

Work area safety

- Keep work area clean and well lit. Cluttered or dark areas invite accidents.
- Do not operate power tools in explosive atmospheres, such as in the presence of flammable liquids, gases or dust. Power tools create sparks which may ignite the dust or fumes.
- Keep children and bystanders away while operating a power tool. Distractions can cause you to lose control.

Electrical safety

- ▶ Power tool plugs must match the outlet. Never modify the plug in any way. Do not use any adapter plugs with earthed (grounded) power tools. Unmodified plugs and matching outlets will reduce risk of electric shock.
- ▶ Avoid body contact with earthed or grounded surfaces, such as pipes, radiators, ranges and refrigerators. There is an increased risk of electric shock if your body is earthed or grounded.
- ▶ Do not expose power tools to rain or wet conditions. Water entering a power tool will increase the risk of electric shock.
- ▶ Do not abuse the cord. Never use the cord for carrying, pulling or unplugging the power tool. Keep cord away from heat, oil, sharp edges or moving parts. Damaged or entangled cords increase the risk of electric shock.
- ▶ When operating a power tool outdoors, use an extension cord suitable for outdoor use. Use of a cord suitable for outdoor use reduces the risk of electric shock.
- ▶ If operating a power tool in a damp location is unavoidable, use a residual current device (RCD) protected supply. Use of an RCD reduces the risk of electric shock. **Personal safety**
- ▶ Stay alert, watch what you are doing and use common sense when operating a power tool. Do not use a power tool while you are tired or under the influence of drugs, alcohol or medication. A moment of inattention while operating power tools may result in serious personal injury.
- ▶ Use personal protective equipment. Always wear eye protection. Protective equipment such as a dust mask, non-skid safety shoes, hard hat or hearing protection used for appropriate conditions will reduce personal injuries.
- ▶ Prevent unintentional starting. Ensure the switch is in the off-position before connecting to power source and/or battery pack, picking up or carrying the tool. Carrying power tools with your finger on the switch or energising power tools that have the switch on invites accidents.
- ▶ Remove any adjusting key or wrench before turning the power tool on. A wrench or a key left attached to a rotating part of the power tool may result in personal injury.
- ▶ Do not overreach. Keep proper footing and balance at all times. This enables better control of the power tool in unexpected situations.
- ▶ Dress properly. Do not wear loose clothing or jewellery. Keep your hair and clothing away from moving parts. Loose clothes, jewellery or long hair can be caught in moving parts.
- ▶ If devices are provided for the connection of dust extraction and collection facilities, ensure these are connected and properly used. Use of dust collection can reduce dust-related hazards.
- ▶ Do not let familiarity gained from frequent use of tools allow you to become complacent and ignore tool safety principles. A careless action can cause severe injury within a fraction of a second.

Power tool use and care

- ▶ Do not force the power tool. Use the correct power tool for your application. The correct power tool will do the job better and safer at the rate for which it was designed.
- ▶ Do not use the power tool if the switch does not turn it on and off. Any power tool that cannot be controlled with the switch is dangerous and must be repaired.
- ▶ Disconnect the plug from the power source and/or remove the battery pack, if detachable, from the power tool before making any adjustments, changing accessories, or storing power tools. Such preventive safety measures reduce the risk of starting the power tool accidentally.
- ▶ Store idle power tools out of the reach of children and do not allow persons unfamiliar with the power tool or these instructions to operate the power tool. Power tools are dangerous in the hands of untrained users.
- ▶ Maintain power tools and accessories. Check for misalignment or binding of moving parts, breakage of parts and any other condition that may affect the power tool's operation. If damaged, have the power tool repaired before use. Many accidents are caused by poorly maintained power tools.
- ▶ Keep cutting tools sharp and clean. Properly maintained cutting tools with sharp cutting edges are less likely to bind and are easier to control.
- ▶ Use the power tool, accessories and tool bits etc. in accordance with these instructions, taking into account the working conditions and the work to be performed. Use of the power tool for operations different from those intended could result in a hazardous situation.
- ▶ Keep handles and grasping surfaces dry, clean and free from oil and grease. Slippery handles and grasping surfaces do not allow for safe handling and control of the tool in unexpected situations.

Battery tool use and care

- ▶ Recharge only with the charger specified by the manufacturer. A charger that is suitable for one type of battery pack may create a risk of fire when used with another battery pack.
- ▶ Use power tools only with specifically designated battery packs. Use of any other battery packs may create a risk of injury and fire.
- ▶ When battery pack is not in use, keep it away from other metal objects, like paper clips, coins, keys, nails, screws or other small metal objects, that can make a connection from one terminal to another. Shorting the battery terminals together may cause burns or a fire.
- ▶ Under abusive conditions, liquid may be ejected from the battery; avoid contact. If contact accidentally occurs,

flush with water. If liquid contacts eyes, additionally seek medical help. Liquid ejected from the battery may cause irritation or burns.

- ▶ Do not use a battery pack or tool that is damaged or modified. Damaged or modified batteries may exhibit unpredictable behaviour resulting in fire, explosion or risk of injury.
- ▶ Do not expose a battery pack or tool to fire or excessive temperature. Exposure to fire or temperature above 130° C (265 °F) may cause explosion.
- ▶ Follow all charging instructions and do not charge the battery pack or tool outside the temperature range specified in the instructions. Charging improperly or at temperatures outside the specified range may damage the battery and increase the risk of fire.

Service

- ▶ Have your power tool serviced by a qualified repair person using only identical replacement parts. This will ensure that the safety of the power tool is maintained.
- ▶ Never service damaged battery packs. Service of battery packs should only be performed by the manufacturer or authorized service providers.

2.1.2 Basic safety precautions

In addition to the safety instructions given in the various sections of these operating instructions, the following points must be strictly observed at all times.

Personal safety

- ▶ Never tamper with or modify the power tool in any way.
- ▶ Use the right tool for the job. Do not use the tool for purposes for which it was not intended. Use it only as directed and when in technically faultless condition.
- ▶ The tool is designed exclusively for setting blind rivets.
- ▶ Stay alert, watch what you are doing and use common sense when operating the tool. Do not use the tool if your full attention is not on the job.
- ▶ To reduce the risk of injury use only genuine Hilti accessories and spare parts or those of equivalent quality.
- ▶ Use only fasteners of a type approved for use with the tool.
- ▶ Observe the information printed in the operating instructions concerning operation, care and maintenance.
- ▶ Never point the tool toward yourself or other persons.
- ▶ Never press the nosepiece of the tool against your hand or against any other part of your body (or other person's hand or part of their body).
- ▶ Drive the fasteners into metal only. Do not attempt to drive fasteners into other materials.
- ▶ Pull the trigger only when the nosepiece of the tool is in contact with the working surface and the tool is fully compressed.
- ▶ When driving fasteners, always hold the fastening tool at right angles to the working surface in order to prevent the fastener being deflected by the surface.
- ▶ Never re-attempt to drive a fastener, because this can cause breakage.
- ▶ Keep the grips dry, clean and free from oil and grease.
- ▶ Never leave a loaded tool unattended.
- ▶ Always remove the rivet before cleaning, servicing or carrying out maintenance work on the tool.
- ▶ Never leave the tool unattended.
- ▶ Unload (remove blind rivet) the tool when it is not being used and store it in a locked, dry place where it is inaccessible to children.
- ▶ Do not disassemble the tool while it is hot. If this is unavoidable, wear protective gloves.
- ▶ Do not operate the tool when parts are damaged or when the controls do not function correctly. Have the tool repaired by Hilti Service.
- ▶ Do not press the switch when there is a blind rivet in the tool.
- ▶ Do not look directly into the light source (LEDs) of the power tool and do not aim the beam at other persons' faces. Risk of dazzling or eye damage.

Safety at the workplace

- ▶ Ensure that the working area is well lit.
- ▶ Keep the workplace tidy. Objects which could cause injury should be removed from the working area.
- ▶ Wear non-skid shoes.
- ▶ You and any other persons in the vicinity must wear suitable eye protection, a hard hat, ear protection and protective gloves while the tool is in use.
- ▶ Keep the tool and blind rivets locked away when not in use, and always keep them out of reach of children.
- ▶ Keep children and other persons away from the working area.
- ▶ Avoid unusual body positions. Keep proper footing and balance at all times.
- ▶ Before driving fasteners, check that no one is present on the other side of the sheet metal to be fastened.
- ▶ Take the influences of the surrounding area into account. Do not use the tool where there is a risk of fire or

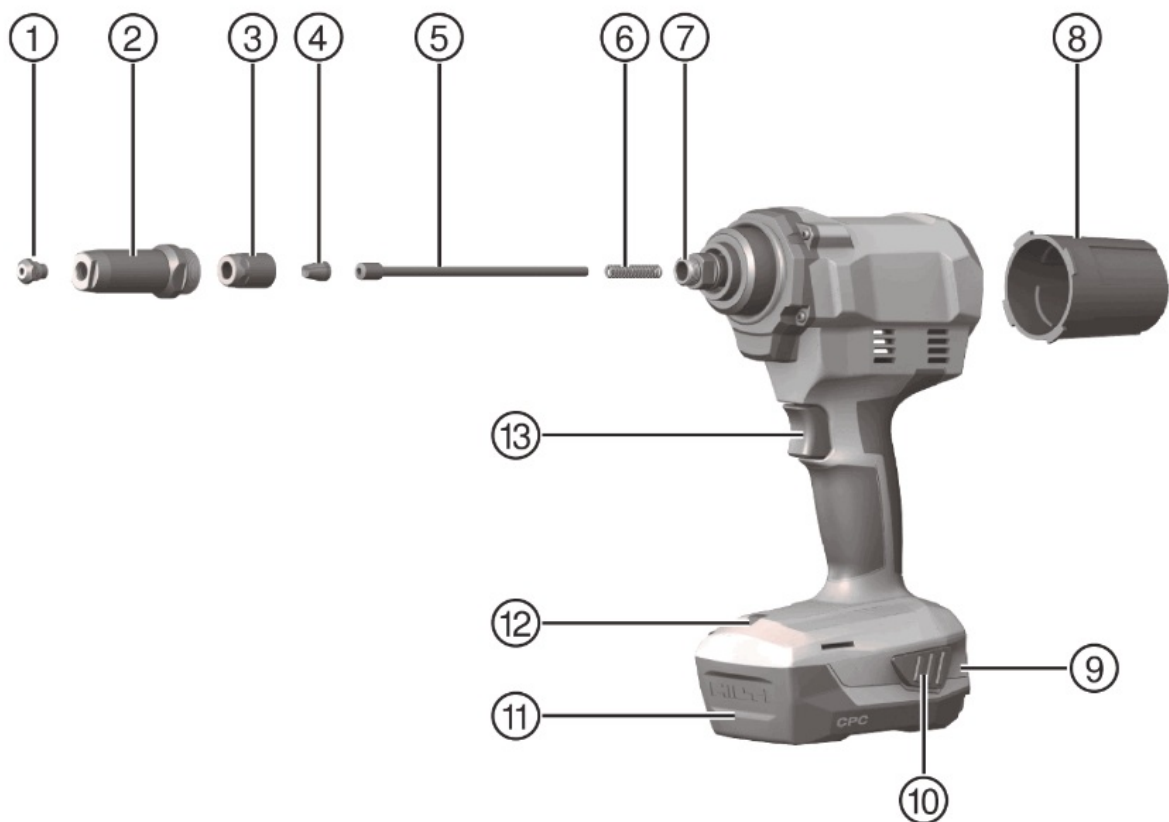
explosion.

2.1.3 Careful handling and use of batteries

- Observe the special guidelines applicable to the transport, storage and use of lithium-ion batteries.
- Do not expose batteries to high temperatures, direct sunlight or fire.
- Do not disassemble, crush or incinerate batteries and do not subject them to temperatures over 80 °C (176 °F).
- Do not use or charge batteries that have suffered mechanical impact, have been dropped from a height or show signs of damage. In this case, always contact your Hilti Service.
- If the battery is too hot to touch it may be defective. Put the battery in a place where it is clearly visible and where there is no risk of fire, at an adequate distance from flammable materials. Allow the battery to cool down. If it is still too hot to touch after an hour, the battery is faulty. Contact Hilti Service.

Description

3.1 Overview of the product 1



Nosepiece Steel sleeve Jaw housing Jaws Jaw pusher Pressure spring Adapter	Mandrel container Battery charge-status and fault indicator Battery release buttons (also used to release the battery) Battery Light source / overload LED Switch
--	--

3.2 Items supplied

Blind-rivet setting tool, 4 nosepieces, wrench, removable mandrel container, operating instructions.

Other system products approved for use with this product can be found at your local Hilti Store or at: www.hilti.group

3.3 Intended use

The product described is a hand-held cordless blind-rivet setting tool.

- Use only Hilti Li-ion batteries of the B22 series with this product.

► Use only Hilti battery chargers of the C4/36 series for these batteries.

3.4 Lithiumion battery status display

The Li-ion battery state of charge and malfunctions of the power tool are indicated by the display on the Liion battery. The Liion battery state of charge is displayed after pressing one of the two battery release buttons.

Status	Meaning
4 LEDs light.	State of charge: 75 % to 100 %
3 LEDs light.	State of charge: 50 % to 75 %
2 LEDs light.	State of charge: 25 % to 50 %
1 LED lights.	State of charge: 10 % to 25 %
1 LED flashes.	State of charge: < 10 %
1 LED flashes, the power tool is not in working order. 4 LEDs flash, the power tool is not in working order.	The battery has overheated or is completely discharged. The power tool is overloaded or has overheated.

Battery state of charge cannot be displayed while the control switch is pressed and for up to 5 seconds after releasing the control switch.

If the battery display LEDs flash, please observe the instructions given in the Troubleshooting section.

3.5 Overload protection



If an overload occurs the tool switches off automatically and the overload LED flashes for 10 seconds.

The tool cannot be used during this time. Overloading is generally caused by residues in the jaw mechanism, which has to be cleaned accordingly. Follow the instructions on removing residues in the section on care and maintenance. The tool should start working again once the blockage has been removed.

Technical data

Rated voltage
Weight including battery B22/8.0
Stroke length

4.1 Battery

Battery operating voltage	21.6
Ambient temperature for operation	-17 (1 °C)
Storage temperature	-20 (-4 °C)
Battery charging starting temperature	-10 (14 °C)

4.2 Table correlating nosepieces and blind rivets to be used

Nosepiece designation	Blind rivet diameter, all commercially available materials
RTN 2.4	2.4 mm (3/32")
RTN 3.2	3.2 mm (1/8")
RTN 4.0	4 mm (5/32")
RTN 4.8	4.8 mm (3/16")

Preparations at the workplace

5.1 Preparations at the workplace



WARNING

Risk of injury by inadvertent starting!

- Before inserting the battery, make sure that the product is switched off.
 - Remove the battery before making any adjustments to the power tool or before changing accessories.
- Observe the safety instructions and warnings in this documentation and on the product.

5.1.1 Charging the battery

1. Before charging the battery, read the operating instructions for the charger.
2. Make sure that the contacts on the battery and the contacts on the charger are clean and dry.
3. Use an approved charger to charge the battery. → page 5

5.1.2 Inserting the battery



WARNING

Risk of injury by short circuit or falling battery!

- Before inserting the battery, make sure that the contacts on the battery and the contacts on the product are free of foreign matter.
- Make sure that the battery always engages correctly.

1. Charge the battery fully before using it for the first time.
2. Push the battery into the product until it engages with an audible click.
3. Check that the battery is seated securely.

5.1.3 Removing the battery

1. Press the battery release buttons.
2. Remove the battery from the tool.

5.1.4 Changing the nosepiece

CAUTION

Risk of injury A blind rivet can injure you.

- Make sure there is no blind rivet in the fastening tool.

1. Press and hold down the switch.
2. Use a ring wrench of the correct size (12 mm) to slacken the nosepiece and unscrew it.
3. Screw the new nosepiece into position.

4. Use a ring wrench of the correct size to tighten the nosepiece.

Types of work

6.1 Setting a blind rivet

1. Install the correct nosepiece for the rivet diameter you are going to use.
2. Insert the blind rivet into the nosepiece.
3. Hold the product in position on the workpiece.



Only predrilled workpieces can be riveted.

4. Briefly press the switch to set the blind rivet.
5. Tilt the product to the rear so that the sheared rivet mandrel can drop into the mandrel container.

6.2 Emptying the mandrel container

1. Turn the mandrel container counter-clockwise to remove.
2. Empty the mandrel container.
3. Screw the mandrel container back on to the product.

Care and maintenance of the product

7.1 Removal of metallic residues

1. Use an open-ended wrench of the correct size (24 mm) to slacken the steel sleeve.
2. Completely unscrew the steel sleeve.
3. Carefully tap all residues out of the steel sleeve.
4. Unscrew the nosepiece and with a cloth, rub the steel sleeve until no traces of metallic residues remain.
5. Screw the nosepiece on again.
6. Use a ring wrench of the correct size (17 mm) to open the jaw housing and unscrew it completely.
7. Remove the three-part jaw assembly (jaws).
8. Carefully tap all residues out of the jaw housing.
9. Use a cloth sprayed with rust inhibitor to rub the jaw housing and the jaws until no traces of metallic residues remain.



Replace the jaws if they are worn.

10. Now remove the jaw pusher and its spring.
11. Clean the jaw pusher and the spring with a cloth.
12. Clean the adapter with a cloth.
13. Use a 15 mm wrench to make sure that the connecting shaft is secure.
14. Reinsert all the parts in the reverse of the disassembly procedure.



In this process, coat the jaw pusher and the jaw housing on the outside with a Hilti grease. Spray a drop of oil into the jaw housing.

15. Tighten the steel sleeve with an open-ended wrench of the correct size (24 mm).

7.2 Removal of metal parts from the jaw housing

1. Use an open-ended wrench of the correct size (24 mm) to slacken the steel sleeve.
2. Completely unscrew the steel sleeve.
3. Carefully tap all residues out of the steel sleeve.
4. Use a ring wrench of the correct size (17 mm) to slacken the jaw housing and unscrew it completely.
5. Carefully tap all residues out of the jaw housing.
 - This causes the three-part jaw assembly and the metal parts to fall out.
6. Reinsert all the parts in the reverse of the disassembly procedure.



Spray a drop of oil into the jaw housing.

7. Tighten the steel sleeve with an open-ended wrench of the correct size (24 mm).

7.3 Check of jaw housing correct seating

1. Use an open-ended wrench of the correct size to slacken the steel sleeve.
2. Completely unscrew the steel sleeve.
3. Check that the jaw housing is seated correctly.
4. If applicable, completely screw the jaw housing back on to the adapter.
5. Screw the sleeve on again.
6. Use an open-ended wrench of the correct size to tighten the steel sleeve.

7.4 Care and maintenance



WARNING

Risk of injury with battery inserted !

- Always remove the battery before carrying out care and maintenance tasks!

Care of the product

- Carefully remove stubborn dirt.
- Carefully clean the air vents, if present, with a dry, soft brush.
- Use only a slightly damp cloth to clean the housing. Do not use cleaning agents containing silicone as these can attack the plastic parts.
- Use a dry, clean cloth to clean the contacts of the product.

Care of the Li-ion batteries

- Never use a battery with clogged air vents. Clean the air vents carefully using a dry, soft brush.
- Avoid unnecessary exposure of the battery to dust and dirt. Never expose the battery to high levels of moisture (e.g. by being dipped in water or left in the rain).

If a battery has been soaked by moisture, treat it as a damaged battery. Isolate it in a non-flammable container and consult Hilti Service.

- Keep the battery free of extraneous oil and grease. Do not permit dust or dirt to accumulate unnecessarily on the battery. Clean the battery with a dry, soft brush or a clean, dry cloth. Do not use cleaning agents containing silicone as these can attack the plastic parts.

Do not touch the contacts of the battery and do not remove the factory-applied grease from the contacts.

- Use only a slightly damp cloth to clean the housing. Do not use cleaning agents containing silicone as these can attack the plastic parts.

Maintenance

- Check all visible parts and controls for signs of damage at regular intervals and make sure that they all function correctly.
- Do not use the product if signs of damage are found or if parts malfunction. Immediately have the product repaired by Hilti Service.
- After cleaning and maintenance, install all guards and protective devices and check that they are in full working order.



To help ensure safe and reliable operation, use only genuine Hilti spare parts and consumables. Spare parts, consumables and accessories approved by Hilti for use with your product can be found at your Hilti Store or online at: www.hilti.group

Transport and storage of cordless tools and batteries

Transport



CAUTION

Accidental starting during transport !

- ▶ Always transport your products with the batteries removed!
- ▶ Remove the battery/batteries.
- ▶ Never transport batteries loose and unprotected. During transport, batteries should be protected from excessive shock and vibration and isolated from any conductive materials or other batteries that may come in contact with the terminals and cause a short circuit. Comply with the locally applicable regulations for transporting batteries.
- ▶ Do not send batteries through the mail. Consult your shipper for instructions on how to ship undamaged batteries.
- ▶ Prior to each use and before and after prolonged transport, check the product and the batteries for damage.

Storage



WARNING

Accidental damage caused by defective or leaking batteries !

- ▶ Always store your products with the batteries removed!
- ▶ Store the product and the batteries in a cool and dry place. Comply with the temperature limits stated in the technical data.
- ▶ Do not store batteries on the charger. Always remove the battery from the charger when the charging operation has completed.
- ▶ Never leave batteries in direct sunlight, on sources of heat, or behind glass.
- ▶ Store the product and batteries where they cannot be accessed by children or unauthorized persons.
- ▶ Prior to each use and before and after prolonged storage, check the product and the batteries for damage.

Troubleshooting

If the trouble you are experiencing is not listed in this table or you are unable to remedy the problem by yourself, please contact Hilti Service.

9.1 Blind-rivet setting tool is not in working order

Malfunction	Possible cause	Action to be taken

The LEDs do not light up.	The battery is not fully inserted.	► Push the battery in until it engages with a click.
	Battery is discharged.	► Change the battery and charge the empty battery.
	The battery is too hot or too cold.	► Bring the battery to the recommended working temperature.
1 LED flashes.	Battery is discharged.	► Change the battery and charge the empty battery.
	The battery is too hot or too cold.	► Bring the battery to the recommended working temperature.
4 LEDs flash.	Product momentarily overloaded.	► Release the control switch and then press it again.
	Protection against overheating.	► Allow the product to cool down and clean the air vents.
	Overload protection.	► Remove metallic residues . -. page 8
Blind rivet is not set.	Battery is discharged.	► Change the battery and charge the empty battery.
	Jaws are dirty or worn.	► Clean the jaws or, if applicable, -. page 8 replace them.
	Jaw housing not correctly screwed on.	► Screw the jaw housing on correctly - page 8
	Spring weak or defective.	► Replace the spring -page 8

No rivet mandrel disposal.	Use of the wrong nosepiece.	► Change the nosepiece- page 7
	Nosepiece is worn.	► Change the nosepiece -page 7
	Rivet mandrel wedged in jaws.	4 Remove the rivet-mandrel residues from the jaw housing . -. page 8
	Steel sleeve is dirty.	4 Clean the steel sleeve . -. page 8
	Mandrel container is full.	4 Empty the mandrel container . -. page 7

Disposal



Most of the materials from which Hilti tools and appliances are manufactured can be recycled. The materials must be correctly separated before they can be recycled. In many countries, your old tools, machines or appliances can be returned to Hilti for recycling. Ask Hilti Service or your Hilti representative for further information.



► Do not dispose of power tools, electronic equipment or batteries as household waste!

Manufacturer's warranty

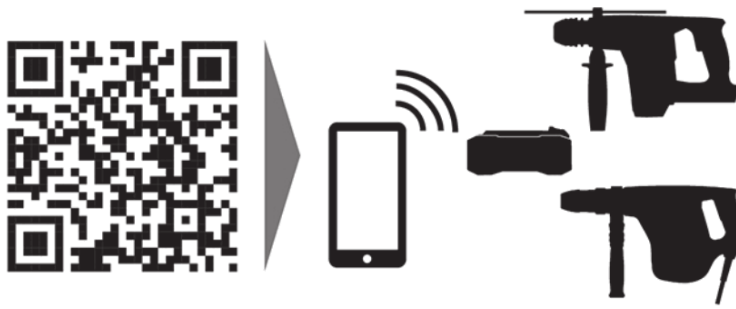
► Please contact your local Hilti representative if you have questions about the warranty conditions.



US This Product is Certified



Hilti Corporation
LI-9494 Schaan
Tel.: +423 234 21 11
Fax: +423 234 29 65
www.hilti.com





<https://hilti.to/ontrackapp>



2225142

Documents / Resources

	<p>HILTI RT 6-A22 Cordless Rivet Tool [pdf] Instruction Manual RT 6-A22 Cordless Rivet Tool, RT 6-A22, RT 6-A22 Rivet Tool, Cordless Rivet Tool, Cordless Rivet Tool, Rivet Tool</p>
	<p>HILTI RT 6-A22 Cordless Rivet Tool [pdf] Instruction Manual RT 6-A22 Cordless Rivet Tool, RT 6-A22, Cordless Rivet Tool, Rivet Tool</p>

References

- [🇺🇸 HILTI Country selector](#)
- [🇷🇺 Официальный сайт - Hilti Россия](#)