



# HILTI ON Track Tag AI L3 Bluetooth Smart Tag Instruction Manual

[Home](#) » [HILTI](#) » HILTI ON Track Tag AI L3 Bluetooth Smart Tag Instruction Manual 

## HILTI ON Track Tag AI L3 Bluetooth Smart Tag Instruction Manual



### Contents

- [1 Original operating instructions](#)
- [2 Safety](#)
- [3 Instructions for use](#)
- [4 Gaps in the numerical sequence](#)
- [5 Do not crease or fold the ON!Track Tag.](#)
  - [5.1 Do not touch the adhesive surface](#)
  - [5.2 Application](#)
  - [5.3 Cleaning the surface](#)
- [6 Application pressure](#)
  - [6.1 Manufacturer's warranty](#)
- [7 Documents / Resources](#)
- [8 Related Posts](#)

**Original operating instructions**

## Safety

### General safety instructions

#### Read all safety instructions and other instructions.

Keep all safety instructions and other instructions for future reference.

#### General safety instructions

- Do not cover the type identification plate or other labels.
- Do not cover openings in the casing of the tool or appliance.
- Do not obstruct switches, displays and warning lights.
- To avoid surface damage or chemical reactions, check that the label adhesive is compatible with the surface before applying the label.
- Keep away from children.
- Use of an additional primer is recommended in order to improve the adhesion of the labels.
- If you use additional products supplied by a third party, such as a cleaning agent or primer, observe their instructions.
- Shelf life is 2 years from the date of manufacture (see packaging).

### Description

#### Intended use

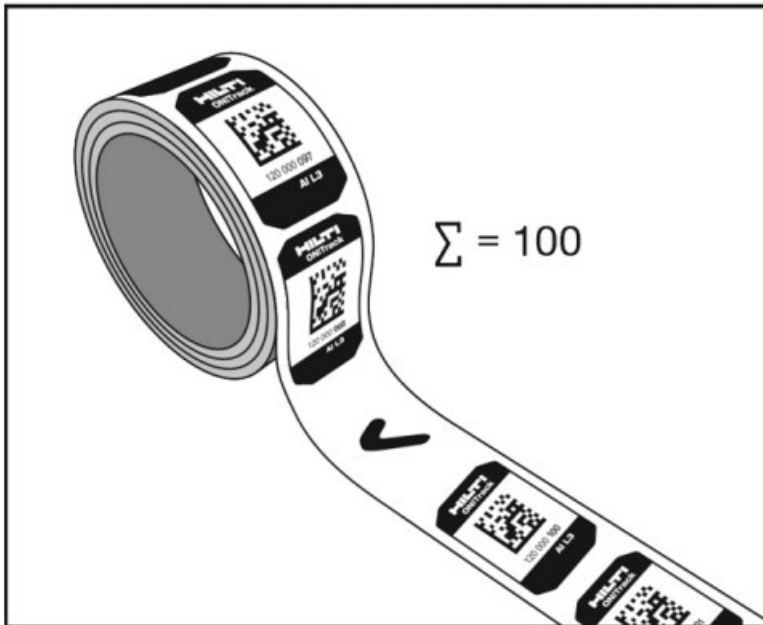
ON!Track Tags are intended to be used to mark items of equipment with a unique identification number for inclusion in the **Hilti** ON!Track asset management system.

#### Technical data

Application and storage temperature	–20 °C ... 45 °C (–4 °F ... 113 °F)
Surface temperature during application	21 °C ... 38 °C (70 °F ... 100 °F)

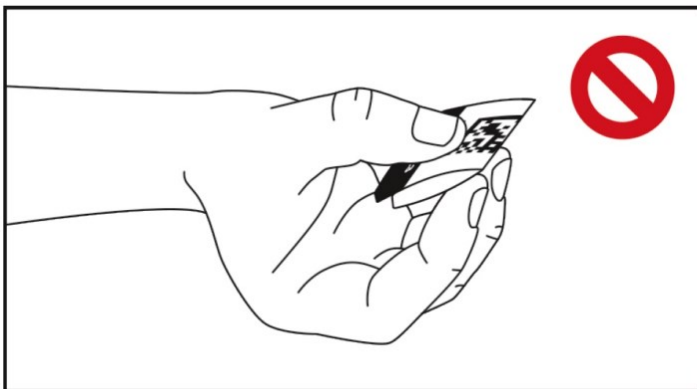
### Instructions for use

#### Gaps in the numerical sequence



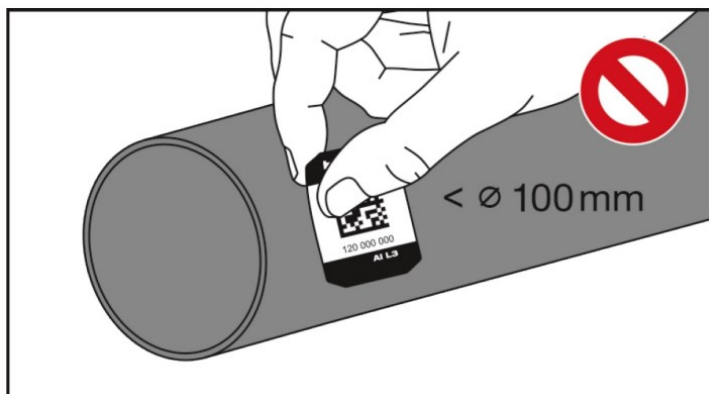
Gaps in the numerical sequence are the result of quality checks. Each package contains 100 ON!Track Tags.

**Do not crease or fold**



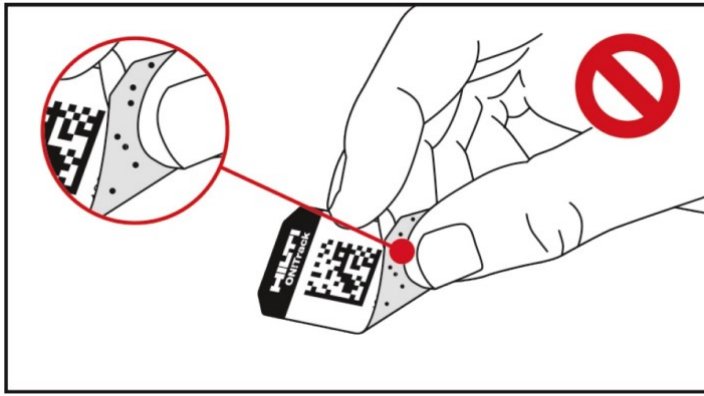
Do not crease or fold the ON!Track Tag.

**Do not crease or fold the ON!Track Tag.**



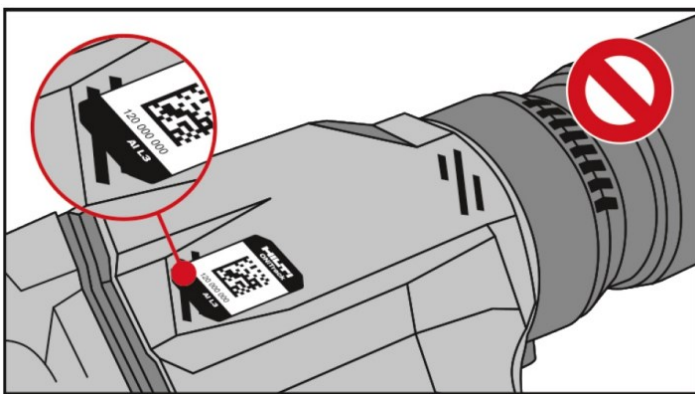
Do not attach an ON!Track Tag to a surface with a diameter of less than 100 mm (3.94").

**Do not touch the adhesive surface**



Do not touch or contaminate the adhesive surface of the ON!Track Tag when removing it from the roll.

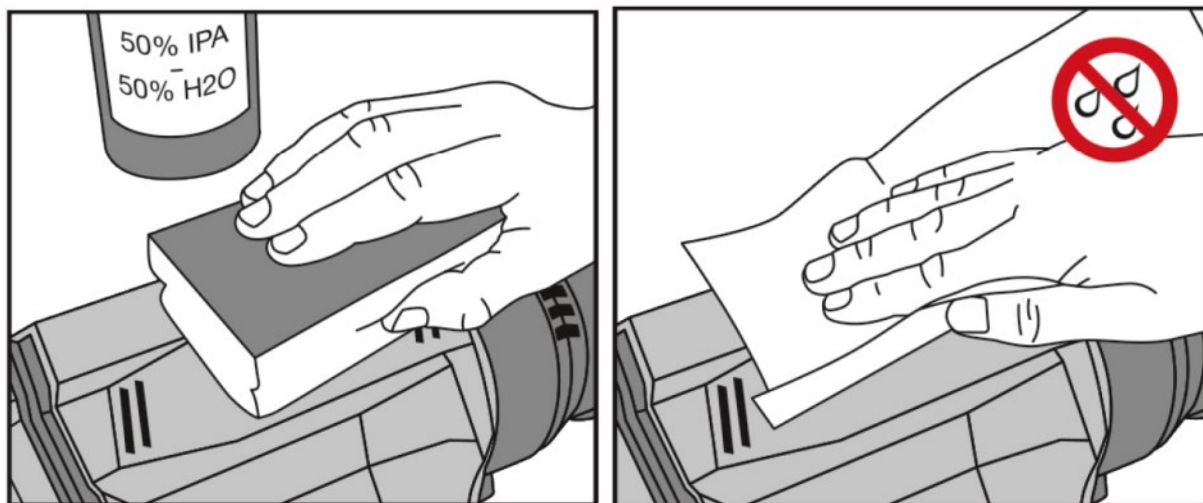
### Position for attaching the ON!Track Tag



Attach the ON!Track Tag only in a position where it is protected from wear and tear. Make sure that the ON!Track Tag does not project beyond edges.

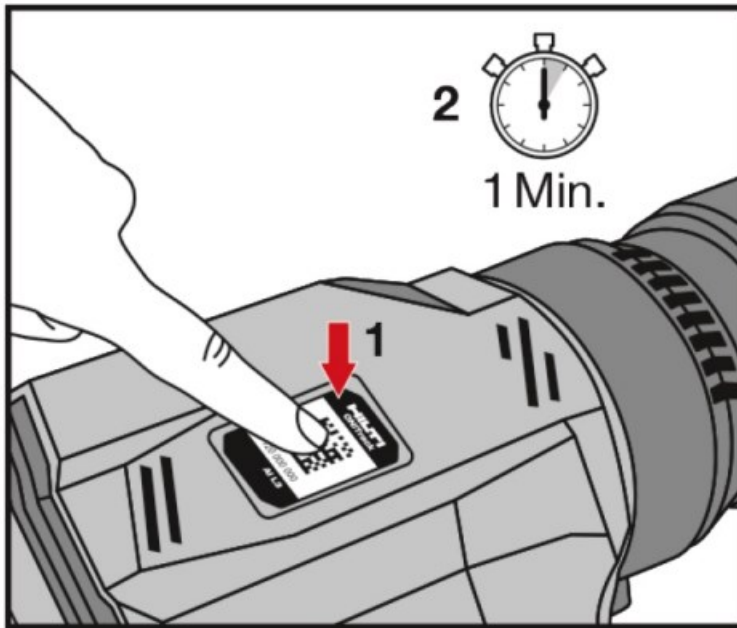
### Application

#### Cleaning the surface



Before applying the ON!Track Tag, clean the surface thoroughly to remove all traces of contaminants, especially oil and grease. We recommend use of a suitable cleaning agent and a lint-free cleaning cloth. Dry the surface thoroughly in order to achieve optimum adhesion.

## Application pressure




Press the ON!Track Tag down with the heel of your hand or apply even pressure with a roller. The ON!Track Tag achieves a better bond when applied with high pressure. After applying the ON!Track Tag, wait a few minutes before using the items of equipment.

### Manufacturer's warranty

- Please contact your local **Hilti** representative if you have questions about the warranty conditions

## Documents / Resources

 The image shows the Hilti ON Track Tag AI L3 Bluetooth Smart Tag. It is a small, rectangular, black tag with a white label that includes the Hilti logo and the text 'ON Track Tag AI L3'. The tag is shown next to a ruler for scale.	<p><a href="#">HILTI ON Track Tag AI L3 Bluetooth Smart Tag</a> [pdf] Instruction Manual ON Track Tag AI L3, Bluetooth Smart Tag, ON Track Tag AI L3 Bluetooth Smart Tag</p>
--	--