



Contents [[hide](#)]

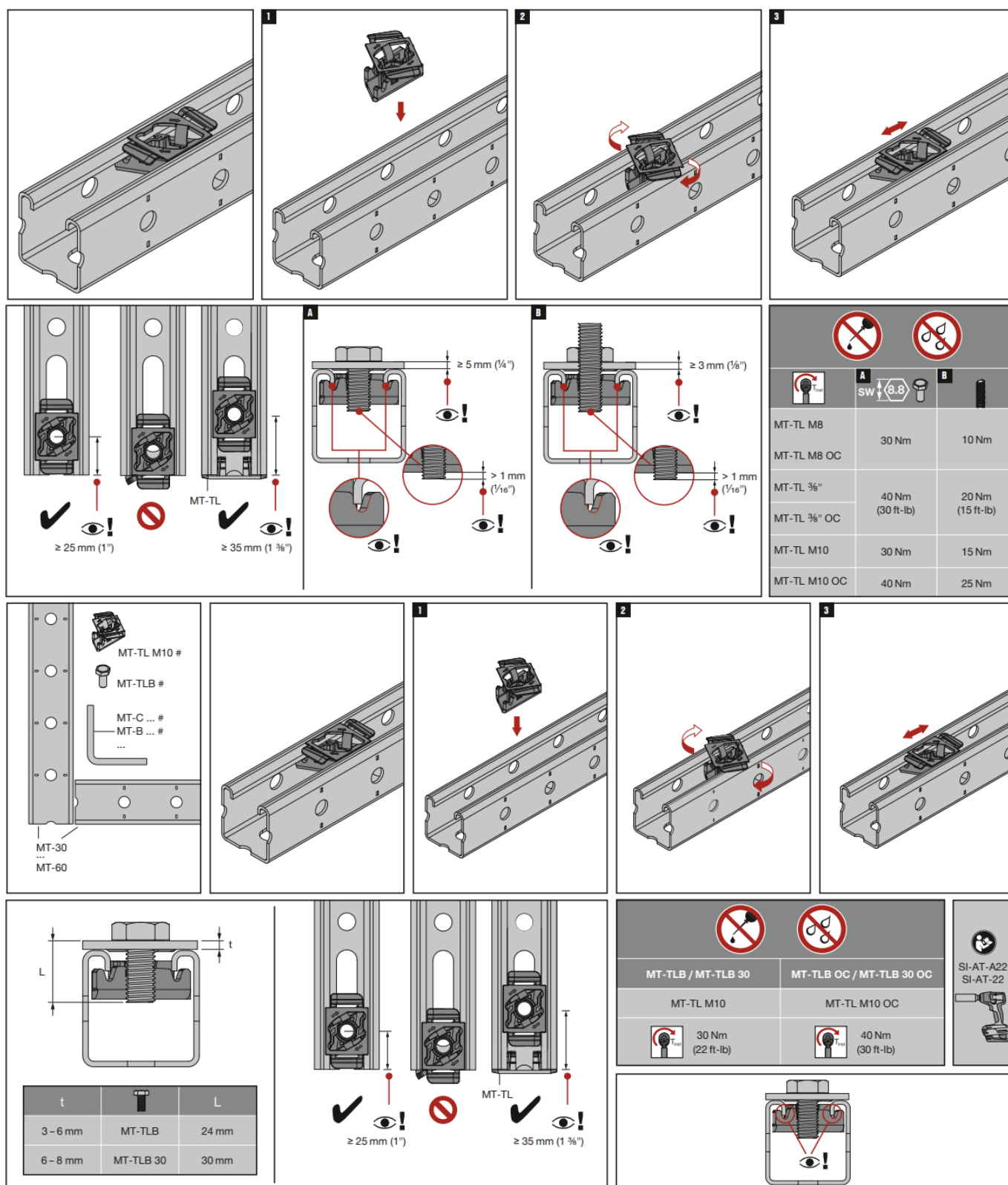
- [1 HILTI MT-TL Twist Lock Channel nut System](#)
- [2 Installation Instruction](#)
- [3 Product Specifications](#)
- [4 Product Usage Instructions](#)
- [5 Frequently Asked Questions](#)
- [6 Documents / Resources](#)
 - [6.1 References](#)



HILTI MT-TL Twist Lock Channel nut System



Installation Instruction



Product Specifications

- Model: MT-TL M8 / MT-TL M10 / MT-TL M8 OC / MT-TL M10 OC
- Part Number: 2311342-04.2025
- Dimensions:
 - MT-TL M8: 25 mm (1 inch)
 - MT-TL M10: 35 mm (1 inch)

- MT-TLB: 24 mm
- MT-ML M10: 30 mm
- Torque Specifications:
 - MT-TL M8: 30 Nm
 - MT-TL M8 OC: 40 Nm (30 ft-lb)
 - MT-TL M10: 30 Nm
 - MT-TL M10 OC: 40 Nm (30 ft-lb)
 - MT-TLB: 15 Nm
 - MT-TLB OC: 20 Nm (15 ft-lb)
 - MT-TLB 30: 30 Nm (22 ft-lb)
 - MT-TLB 30 OC: 40 Nm (30 ft-lb)
- Other Specifications:
 - SW: 8.8
 - SI-AT-A22, SI-AT-22 compatibility

Product Usage Instructions

Installation

1. Identify the appropriate model based on your requirements.
2. Ensure the dimensions match the specifications needed for your application.
3. Use the specified torque values to securely fasten the product in place.

Maintenance

Regularly check the torque settings to maintain proper functionality. Lubricate moving parts if necessary.

Compatibility

Ensure compatibility with SI-AT-A22 and SI-AT-22 for seamless integration with other components.

Frequently Asked Questions

Q: What are the torque specifications for MT-TL M8 and MT-TL M10?

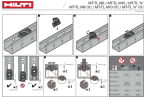
A: The torque specification for MT-TL M8 is 30 Nm, while for MT-TL M10, it is 30 Nm

without OC and 40 Nm with OC.

Q: How do I identify the correct model for my application?

A: Refer to the dimensions provided in the specifications section and choose the model that fits your requirements.

Documents / Resources

	<p>HILTI MT-TL Twist Lock Channel nut System [pdf] Instructions</p> <p>M8, M10, M8 OC, M10 OC, OC, MT-TL Twist Lock Channel nut System, MT-TL, Twist Lock Channel nut System, Lock Channel nut System, Channel nut System, System</p>
---	---

References

- [User Manual](#)

■ HILTI

◆ Channel nut System, HILTI, Lock Channel nut System, M10, M10 OC, M8, M8 OC, MT-TL, MT-TL Twist Lock Channel nut System, oc, System, Twist Lock Channel nut System

Leave a comment

Your email address will not be published. Required fields are marked *

Comment *

Name

Email

Website

☐ Save my name, email, and website in this browser for the next time I comment.

Post Comment

Search:

e.g. whirlpool wrf535swhz

Search

[Manuals+](#) | [Upload](#) | [Deep Search](#) | [Privacy Policy](#) | [@manuals.plus](#) | [YouTube](#)

This website is an independent publication and is neither affiliated with nor endorsed by any of the trademark owners. The "Bluetooth®" word mark and logos are registered trademarks owned by Bluetooth SIG, Inc. The "Wi-Fi®" word mark and logos are registered trademarks owned by the Wi-Fi Alliance. Any use of these marks on this website does not imply any affiliation with or endorsement.