



Contents [[hide](#)]

- [1 HILTI CFS-BTS Bottom Track Seal Preformed Firestop](#)
- [2 Product Information](#)
- [3 Specifications](#)
- [4 Installation Instructions](#)
- [5 FAQ](#)
- [6 Documents / Resources](#)
 - [6.1 References](#)



HILTI CFS-BTS Bottom Track Seal Preformed Firestop



Product Information

Introduction

Before handling and for specific application details, refer to Hilti product literature, third-party published listings, and national approvals. For professional use only.



CFS-BTS



Specifications

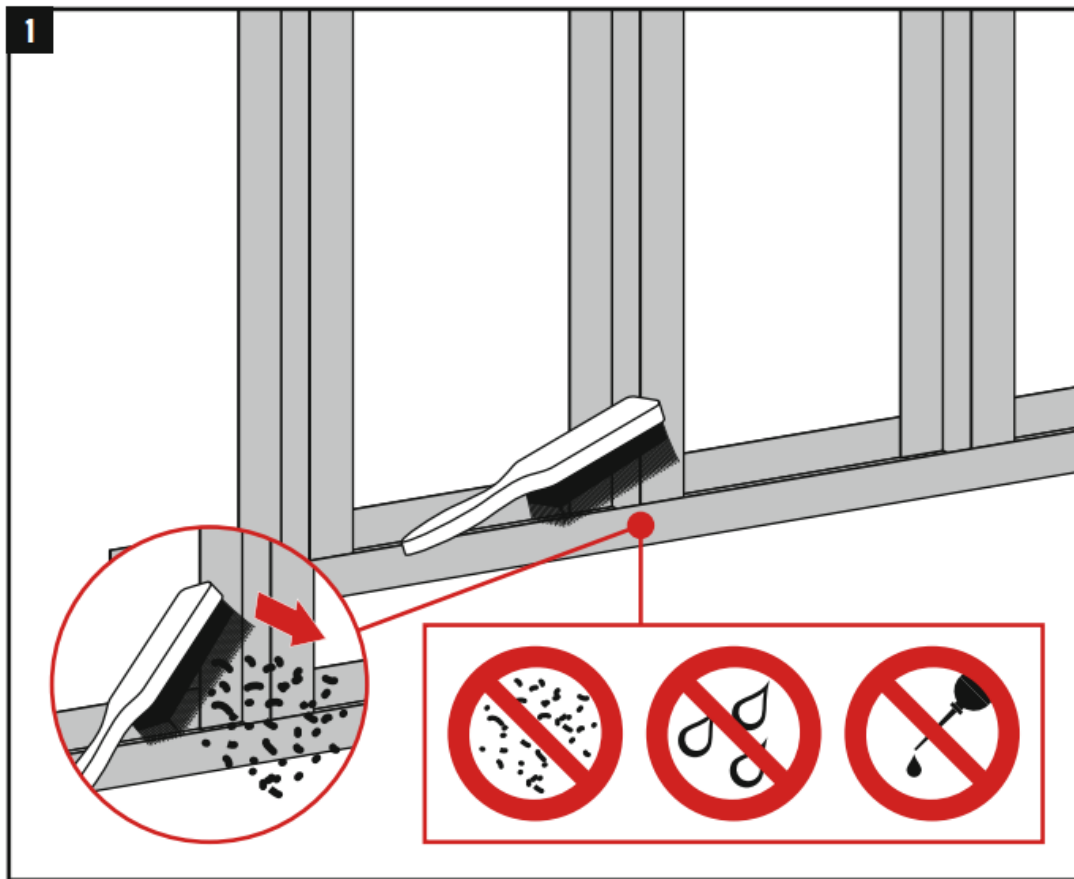
Product	Size	Fire Rating
CFS-BTS	5/8" (16mm)	1 hour
CFS-BTS	1 1/4" (32mm)	2 hours

	<table><tr><td>CFS-BTS 5/8" (16mm)</td><td>→</td><td></td><td>→</td><td></td><td>1h</td><td>✓</td></tr><tr><td>CFS-BTS 1 1/4" (32mm)</td><td>→</td><td></td><td>→</td><td></td><td>2h</td><td>✓</td></tr></table>	CFS-BTS 5/8" (16mm)	→		→		1h	✓	CFS-BTS 1 1/4" (32mm)	→		→		2h	✓
CFS-BTS 5/8" (16mm)	→		→		1h	✓									
CFS-BTS 1 1/4" (32mm)	→		→		2h	✓									

Installation Instructions

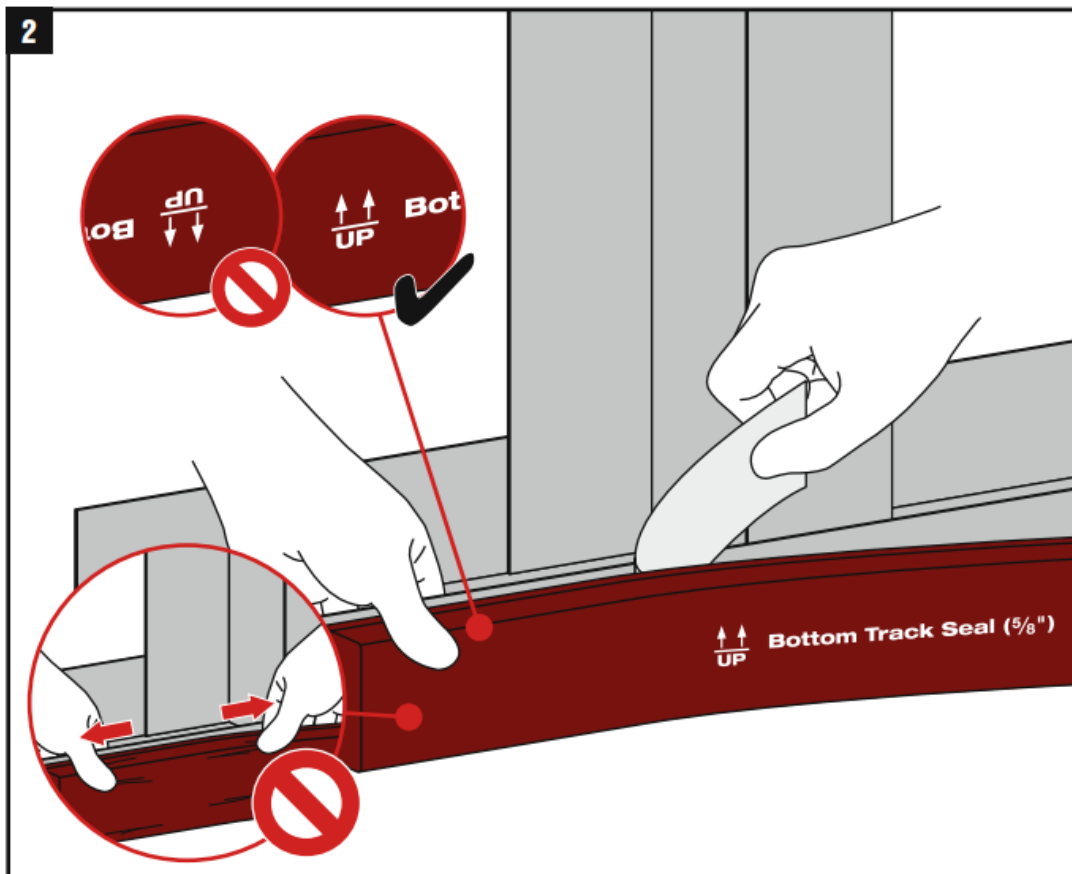
Step 1

Clean the surface where the Bottom Track Seal will be applied. Do not use any materials that could compromise adhesion.



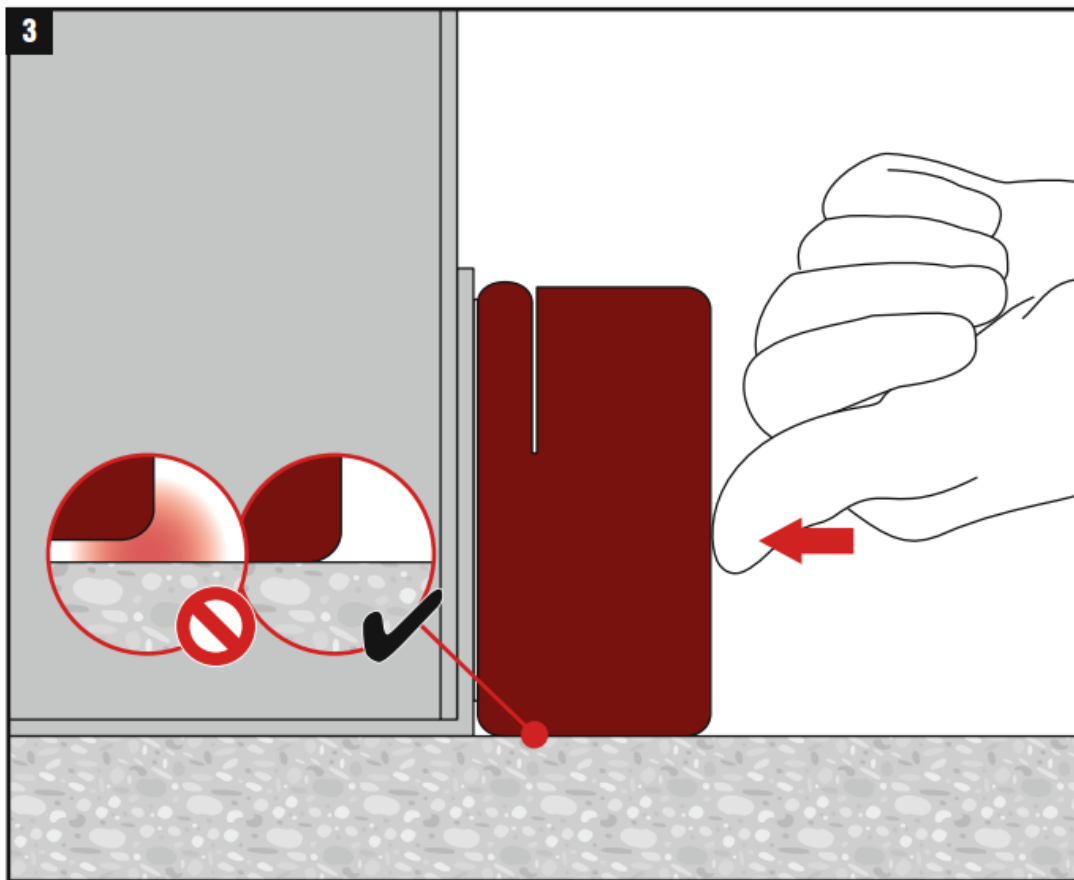
Step 2

Align the Bottom Track Seal with the track, ensuring the “UP” side is facing upwards. Press firmly to ensure proper adhesion.



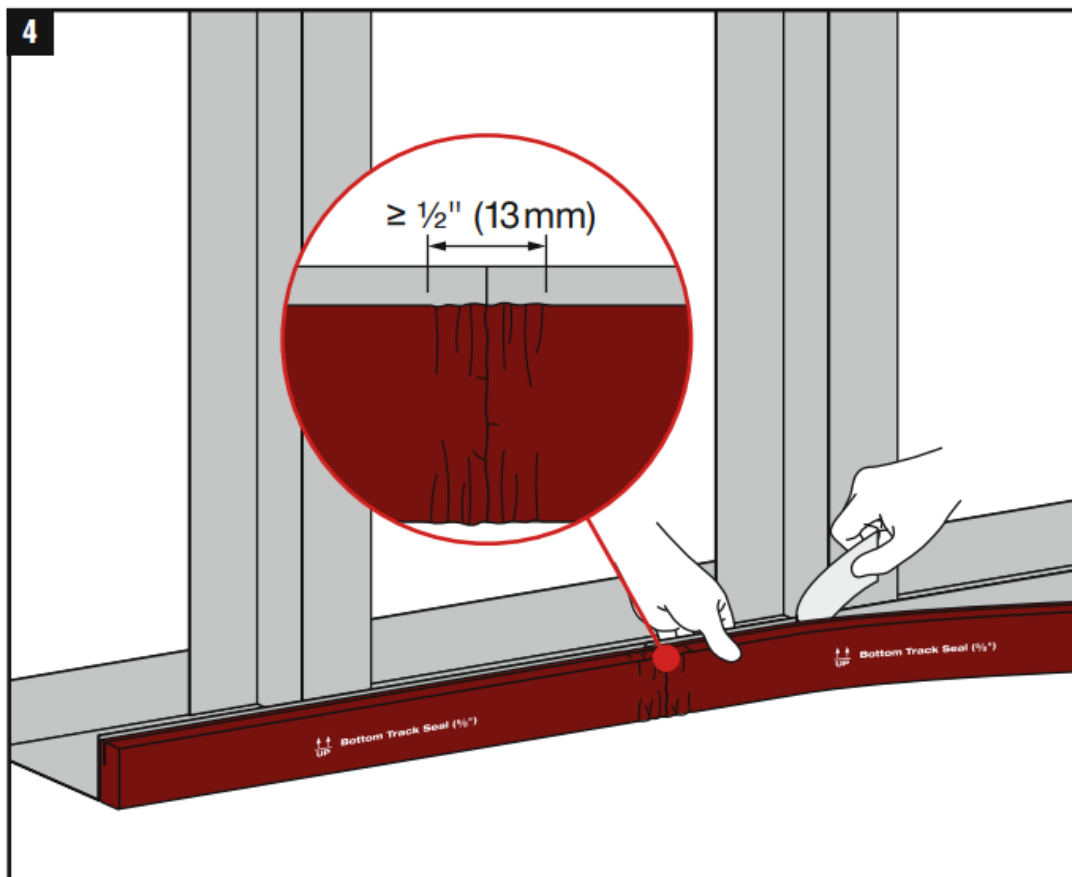
Step 3

Ensure the seal is pressed tightly into the corner to prevent gaps.



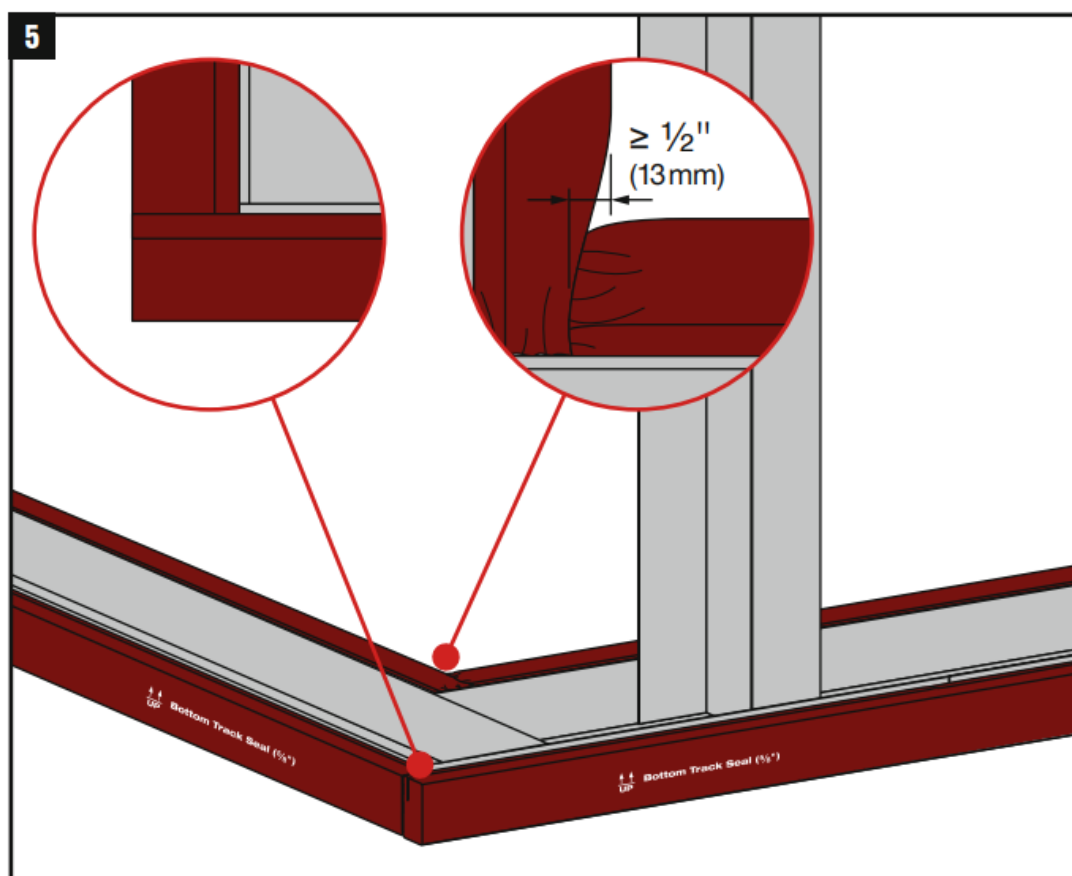
Step 4

Maintain a minimum overlap of 1/2" (13mm) at joints to ensure a continuous seal.



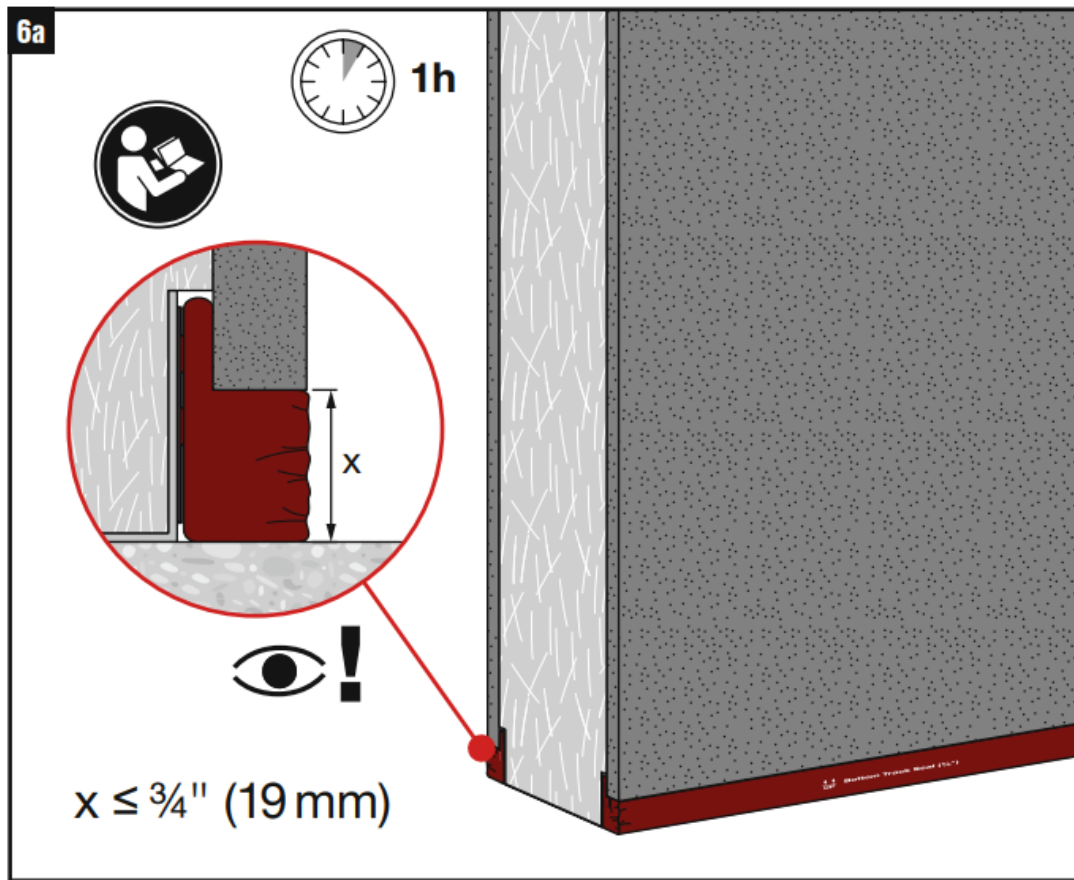
Step 5

For corner installations, ensure the seal is continuous and overlaps by at least 1/2" (13mm).



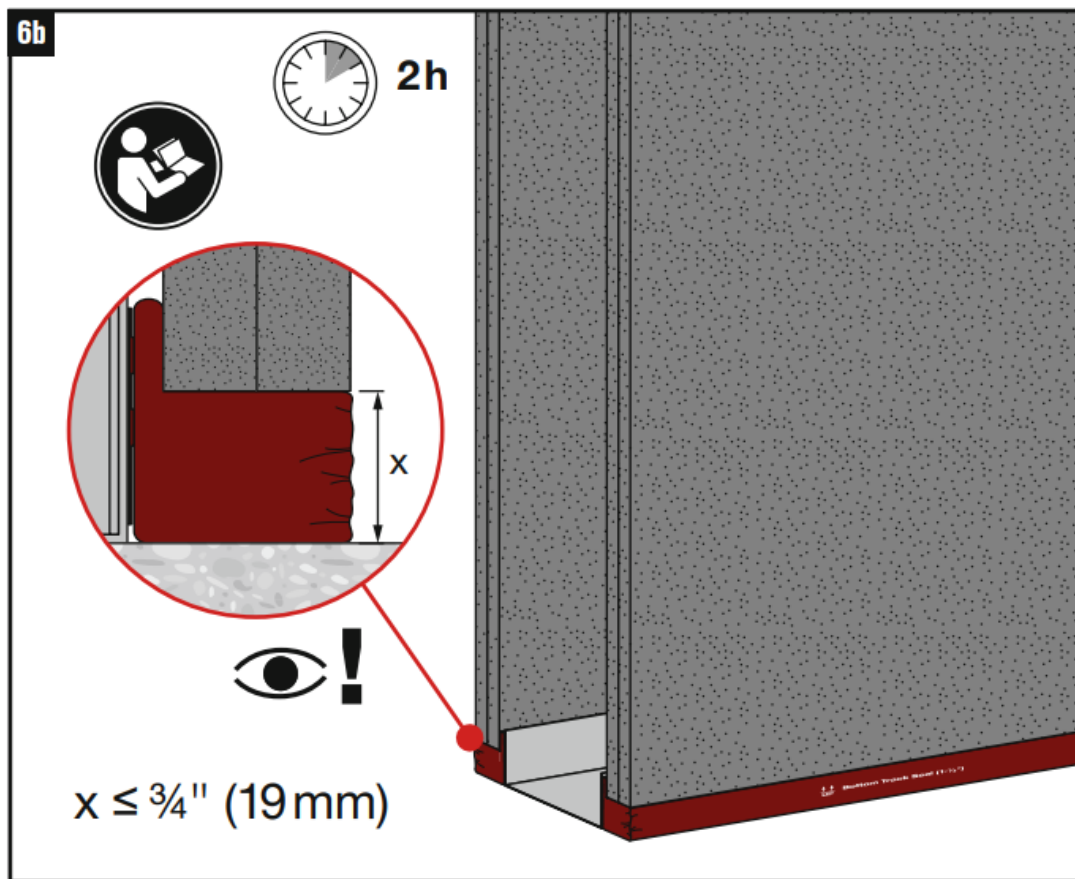
Step 6a

For 1-hour fire rating, ensure the seal height does not exceed 3/4" (19mm).



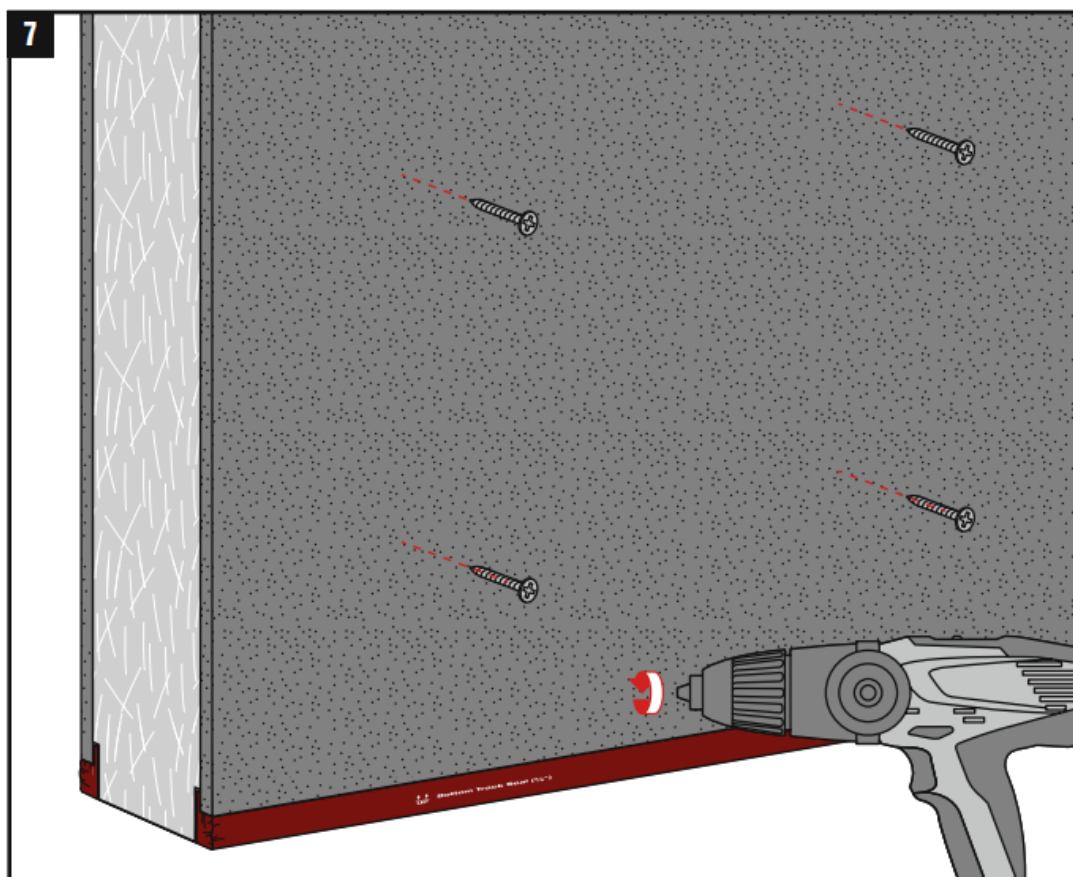
Step 6b

For 2-hour fire rating, ensure the seal height does not exceed 3/4" (19mm).



Step 7

Secure the installation with appropriate fasteners as needed.



FAQ


• **Q: Can the CFS-BTS be used for residential applications?**

A: No, the CFS-BTS is designed for professional use only and should not be used in residential settings.

• **Q: What is the recommended maintenance schedule for the CFS-BTS?**

A: It is recommended to inspect the CFS-BTS regularly, at least once every six months, for any damage or wear and clean it as needed.

Documents / Resources

	<p>HILTI CFS-BTS Bottom Track Seal Preformed Firestop [pdf] Instruction Manual</p> <p>CFS-BTS Bottom Track Seal Preformed Firestop, CFS-BTS, Bottom Track Seal Preformed Firestop, Track Seal Preformed Firestop, Seal Preformed Firestop, Preformed Firestop, Firestop</p>
---	---

References

- [User Manual](#)

■ HILTI

◆ Bottom Track Seal Preformed Firestop, CFS-BTS, CFS-BTS Bottom Track Seal Preformed Firestop, FIRESTOP, HILTI, Preformed Firestop, Seal Preformed Firestop, Track Seal Preformed Firestop

Leave a comment

Your email address will not be published. Required fields are marked *

Comment *

Name

Email

Website

☐ Save my name, email, and website in this browser for the next time I comment.

Post Comment

Search:

e.g. whirlpool wrf535swhz

Search

[Manuals+](#) | [Upload](#) | [Deep Search](#) | [Privacy Policy](#) | [@manuals.plus](#) | [YouTube](#)

This website is an independent publication and is neither affiliated with nor endorsed by any of the trademark owners. The "Bluetooth®" word mark and logos are registered trademarks owned by Bluetooth SIG, Inc. The "Wi-Fi®" word mark and logos are registered trademarks owned by the Wi-Fi Alliance. Any use of these marks on this website does not imply any affiliation with or endorsement.