



HIKVISION Wireless Portable Emergency Button DS-PDEBP-EG2-WE User Manual

[Home](#) » [Hikvision](#) » HIKVISION Wireless Portable Emergency Button DS-PDEBP-EG2-WE User Manual 



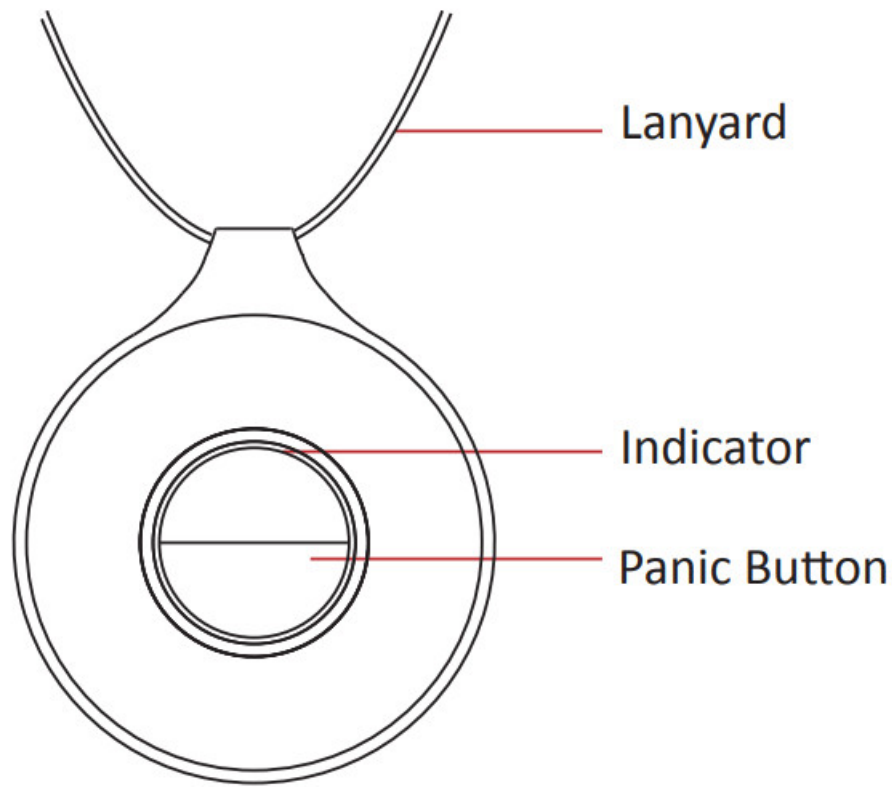
DS-PDEBP-EG2-WE
Wireless Portable Emergency Button

| | |
|--|---|
| EN 50131-1:2006+A1: 2009+A2:2017 EN 50131-3:2009 EN 50131-5-3:2017 | Security Grade(SG) 2 Environmental Class(EC) II Certified by Telefication |
|--|---|

Contents

- 1 [Appearance](#)
- 2 [Enrollment](#)
- 3 [Test](#)
- 4 [Replace Battery](#)
- 5 [Functions](#)
- 6 [Formatting](#)
- 7 [Set up with App](#)
- 8 [Operation Caution and Device Maintenance](#)
- 9 [Specification](#)
- 10 [Documents / Resources](#)
 - 10.1 [References](#)
- 11 [Related Posts](#)

Appearance



Enrollment

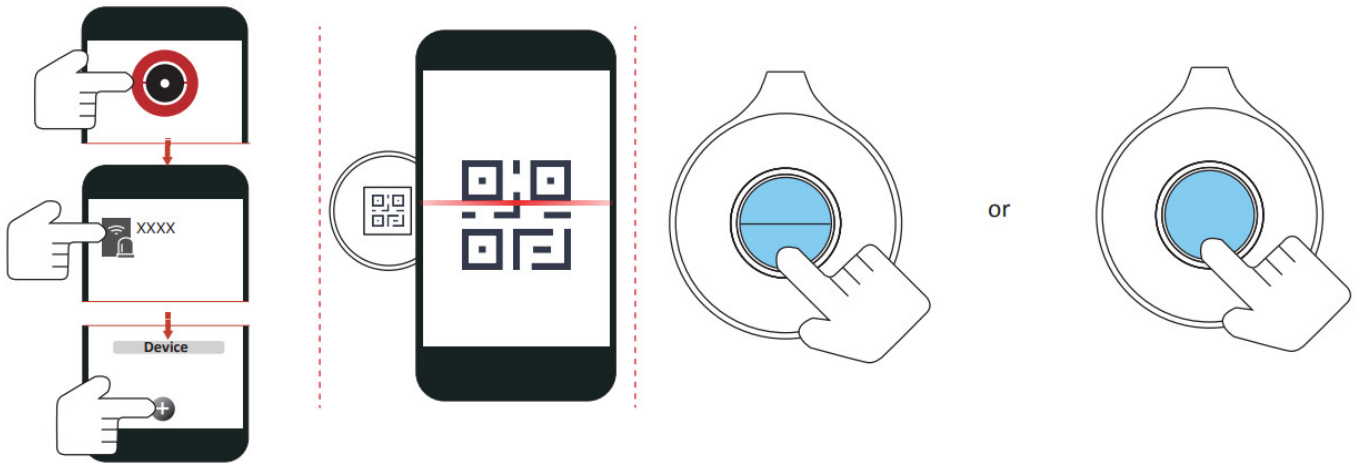
1. Log in to the APP Store, download, and install the App.
2. Power on the security control panel.
3. Log in to the APP and tap the icon “+”. Scan the QR code or input the control panel serial No. to add the control panel.

Enroll the Peripheral Locally

1. In the APP, tap the “Enrollment Mode” button on the control panel page to make the control panel enter the enrollment status.
2. Trigger the peripheral, and it will be automatically enrolled to the control panel.

Enroll the Peripheral with QR Code and Serial No.

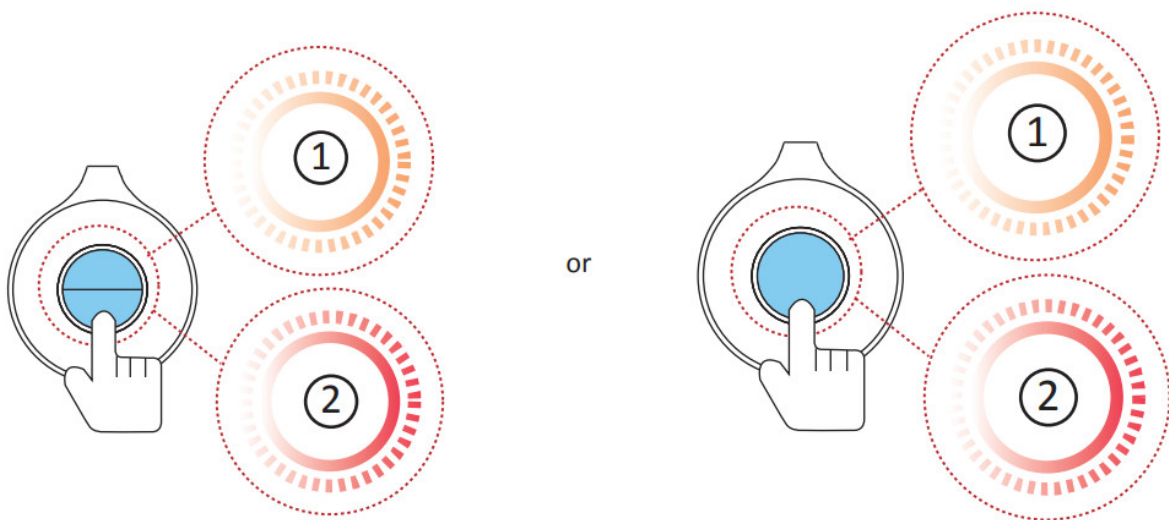
1. In the APP, tap the icon “+” and scan the QR code or serial No. on the peripheral.
2. Trigger the peripheral, and it will be automatically enrolled to the control panel.



Test

Trigger the emergency button, and the LED indicates the operation result.

1. Button
2. Alarm Received



Replace Battery

1. Pry the groove on the side of the panic button to open the rear sheet.
2. Replace the battery.
3. Close the rear sheet.

CAUTION

RISK OF EXPLOSION IF BATTERY IS REPLACED BY AN INCORRECT TYPE.
REPLACEMENT OF A BATTERY WITH AN INCORRECT TYPE CAN DEFEAT A SAFEGUARD.

CAUTION

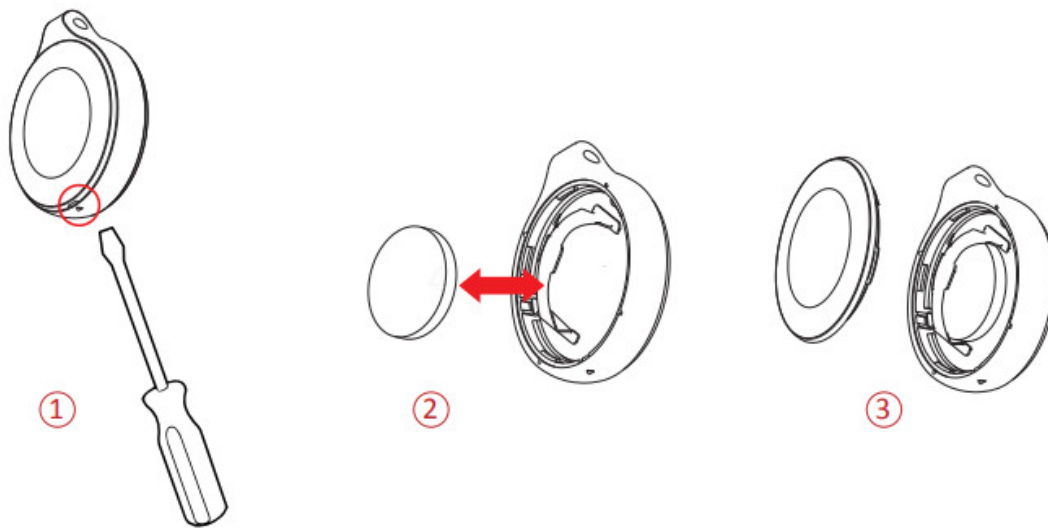
CHEMICAL BURNING DANGER DOES NOT LOWER THE BATTERY KEEP NEW AND USED BATTERIES AWAY FROM THE CHILDREN.
IF YOU THINK BATTERIES MIGHT HAVE INFLAMED OR PLACED INSIDE ANY PART OF THE BODY, SEEK IMMEDIATE MEDICAL ATTENTION.

CAUTION

IF THE BATTERY COMPARTMENT DOES NOT CLOSE SECURELY, STOP USING THE PRODUCT AND KEEP IT AWAY FROM CHILDREN.

CAUTION

DISPOSE OF USED BATTERIES ACCORDING TO THE INSTRUCTIONS AND LOCAL REGULATIONS.

**Functions**

| Function | Description |
|---------------|--|
| Panic Alarm | Press the button to trigger the alarm while in an emergency condition. The LED keeps red for 2 s. |
| Medical Alarm | Set the panic button as a medical button via the AX PRO client. Press the button to trigger the alarm while in an emergency condition. The LED keeps red for 2 s. |
| Panic Alarm | Press the two buttons synchronously to trigger the alarm while in emergency conditions. The LED keeps red for 2 s. |
| Medical Alarm | Set the panic button as a medical button via the AX PRO client. Press the two buttons synchronously to trigger the alarm while in emergency conditions. The LED keeps red for 2 s. |

Formatting

Remove the battery. Hold any button for 8 seconds and meanwhile put the battery in. The red LED flashes 3 times when the formatting is completed.

Set up with App

You can view the device status including temperature, signal intensity, battery level, connection, 24-hour zone, and operation mode on the device page. Tap the  button to enter the settings page.

| | |
|-----------------------------|---|
| Zone Type | Select the zone type of the detector. |
| Enable Silent Zone | Slide to green to make the zone keep silent while the alarm is triggered. |
| Cross Zone | If the alarm is triggered in both of the linked zones within the set time, two alarm messages will be reported. |
| Link Camera | Link with a camera for intruder verification. |
| Accidental Press Protection | Set the protection mode to prevent false alarms. |
| Polling Rate | Set the interval of a heartbeat. |

Operation Caution and Device Maintenance

- All the electronic operations should be in strict compliance with the electrical safety regulations, fire prevention regulations, and other related regulations in your local region.
- Do not drop the device or subject it to physical shock, and do not expose it to high electromagnetism radiation. Avoid the equipment installation on vibrations surfaces or places subject to shock (ignorance can cause equipment damage).
- Please make sure that the power has been disconnected before you wire, install or dismantle the device.
- If smoke, odors, or noise rise from the device, turn off the power at once and unplug the power cable, and then please contact the service center.
- Do not drop the device or subject it to physical shock, and do not expose it to high electromagnetism radiation. Avoid the equipment installation on vibrations surfaces or places subject to shock (ignorance can cause equipment damage).
- Do not place the device in extremely hot (refer to the specification of the device for the detailed operation temperature), cold, dusty, or damp locations, and do not expose it to high electromagnetic radiation.
- The device for indoor use shall be kept from rain and moisture.
Exposing the equipment to direct sunlight, low ventilation, or heat sources such as heater or radiator is forbidden (ignorance can cause fire danger).
- Do not aim the device at the sun or extra bright places. A blooming or smear may occur otherwise (which is not a malfunction, however), and affecting the endurance of the sensor at the same time.
- Improper use or replacement of the battery may result in a hazard of explosion. Replace with the same or equivalent type only. Dispose of used batteries according to the instructions provided by the battery manufacturer.
- Do not expose the device to corrosive gas. Otherwise, equipment damage may occur.
- Do not expose the device to an explosive situation.

Specification

| | |
|------------------------|---|
| LED indicators | Red or Green (alarm) |
| LED alarm confirmation | Flashing LED |
| IP rating | IP54 |
| Operating temperature | -10 °C to 55 °C (14 °F to 131 °F) -10 °C to 40 °C (14 °F to 104 °F) EN Certified |
| Storage temperature | -20 °C to 60 °C (-4 °F to 140 °F) |
| Operating humidity | 10% to 90% |

| | |
|-----------------------------------|--|
| Dimension (D × D) | φ38 × 12mm |
| Weight | 13.5g |
| Neckless strap | Yes |
| Button color | Programmable Red or Green |
| Watch bracelet | Optional supplied separately |
| Wireless technology | Tri-X Wireless Technology |
| Environment temperature indicator | No |
| 2-way wireless communication | Yes |
| Transmission frequency | 868MHz |
| Frequency hopping | Multichannel transmission |
| Transmission encryption | AES-128 encryption |
| RF range | 1.2Km (Open area) |
| Enrolling methods | Power up, Remote ID, QR code |
| Battery | CR2032 x 1 (included) 210 mAh capacity |
| Standard battery life | 3 years |
| PS type | Type C |

| | |
|-------------------|-------------------------------------|
| Low voltage level | 2.45 V |
| Consumption | Quiescent Current: 1uA Max: 45.56mA |
| Classification | Portable |
| ACE type | Type B |

©2020 Hangzhou Hikvision Digital Technology Co., Ltd. All rights reserved.

About this Manual

The Manual includes instructions for using and managing the Product. Pictures, charts, images, and all other information hereinafter are for description and explanation only. The information contained in the Manual is subject to change, without notice, due to firmware updates or other reasons. Please find the latest version of this Manual at the Hikvision website (<https://www.hikvision.com/>).

Please use this Manual with the guidance and assistance of professionals trained in supporting the Product.

HIKVISION and other Hikvision trademarks and logos are the properties of Hikvision in various jurisdictions. Other trademarks and logos mentioned are the properties of their respective owners.





Disclaimer

TO THE MAXIMUM EXTENT PERMITTED BY APPLICABLE LAW, THIS MANUAL AND THE PRODUCT DESCRIBED, WITH ITS HARDWARE, SOFTWARE AND FIRMWARE, ARE PROVIDED “AS IS” AND “WITH ALL FAULTS AND ERRORS”. HIKVISION MAKES NO WARRANTIES, EXPRESS OR IMPLIED, INCLUDING WITHOUT LIMITATION, MERCHANTABILITY, SATISFACTORY QUALITY, OR FITNESS FOR A PARTICULAR PURPOSE. THE USE OF THE PRODUCT BY YOU IS AT YOUR OWN RISK. IN NO EVENT WILL HIKVISION BE LIABLE TO YOU FOR ANY SPECIAL, CONSEQUENTIAL, INCIDENTAL, OR INDIRECT DAMAGES, INCLUDING, AMONG OTHERS, DAMAGES FOR LOSS OF BUSINESS PROFITS, BUSINESS INTERRUPTION, OR LOSS OF DATA, CORRUPTION OF SYSTEMS, OR LOSS OF DOCUMENTATION, WHETHER BASED ON BREACH OF CONTRACT, TORT (INCLUDING NEGLIGENCE), PRODUCT LIABILITY, OR OTHERWISE, IN CONNECTION WITH THE USE OF THE PRODUCT, EVEN IF HIKVISION HAS BEEN ADVISED OF THE POSSIBILITY OF SUCH DAMAGES OR LOSS.

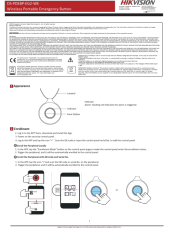
YOU ACKNOWLEDGE THAT THE NATURE OF THE INTERNET PROVIDES FOR INHERENT SECURITY RISKS, AND HIKVISION SHALL NOT TAKE ANY RESPONSIBILITIES FOR ABNORMAL OPERATION, PRIVACY LEAKAGE OR OTHER DAMAGES RESULTING FROM CYBER-ATTACK, HACKER ATTACK, VIRUS INSPECTION, OR OTHER INTERNET SECURITY RISKS; HOWEVER, HIKVISION WILL PROVIDE TIMELY TECHNICAL SUPPORT IF REQUIRED.

YOU AGREE TO USE THIS PRODUCT IN COMPLIANCE WITH ALL APPLICABLE LAWS, AND YOU ARE SOLELY RESPONSIBLE FOR ENSURING THAT YOUR USE CONFORMS TO THE APPLICABLE LAW. ESPECIALLY, YOU ARE RESPONSIBLE, FOR USING THIS PRODUCT IN A MANNER THAT DOES NOT INFRINGE ON THE RIGHTS OF THIRD PARTIES, INCLUDING WITHOUT LIMITATION, RIGHTS OF PUBLICITY, INTELLECTUAL PROPERTY RIGHTS, OR DATA PROTECTION, AND OTHER PRIVACY RIGHTS. YOU SHALL NOT USE THIS PRODUCT FOR ANY PROHIBITED END-USES, INCLUDING THE DEVELOPMENT OR PRODUCTION OF WEAPONS OF MASS DESTRUCTION, THE DEVELOPMENT OR PRODUCTION OF CHEMICAL OR BIOLOGICAL WEAPONS, ANY ACTIVITIES IN THE CONTEXT RELATED TO ANY NUCLEAR EXPLOSIVE OR UNSAFE NUCLEAR FUEL-CYCLE, OR IN SUPPORT OF HUMAN RIGHTS ABUSES.

IN THE EVENT OF ANY CONFLICTS BETWEEN THIS MANUAL AND THE APPLICABLE LAW, THE LATTER PREVAILS.

| | |
|---|--|
|  | <p>This product and – if applicable – the supplied accessories too are marked with “CE” and comply therefore with the applicable harmonized European standards listed under the RE Directive 2014/53/EU, the RoHS Directive 2011/65/EU.</p> |
|  | <p>2012/19/EU (WEEE directive): Products marked with this symbol cannot be disposed of as unsorted municipal waste in the European Union. For proper recycling, return this product to your local supplier upon the purchase of equivalent new equipment, or dispose of it at designated collection points. For more information see: www.recyclethis.info</p> |
|  | <p>replacement of a battery with an incorrect type that can defeat a safeguard (for example, in the case of some lithium battery types);</p> <ul style="list-style-type: none"> – disposal of a battery into fire or a hot oven, or mechanically crushing or cutting of a battery, that can result in an explosion; – leaving a battery in an extremely high temperature surrounding environment that can result in an explosion or the leakage of flammable liquid or gas; and – a battery subjected to the extremely low air pressure that may result in an explosion or the leakage of flammable liquid or gas |
|  | <p>2006/66/EC (battery directive): This product contains a battery that cannot be disposed of as unsorted municipal waste in the European Union. See the product documentation for specific battery information. The battery is marked with this symbol, which may include lettering to indicate cadmium (Cd), lead (Pb), or mercury (Hg). For proper recycling, return the battery to your supplier or to a designated collection point. For more information see: www.recyclethis.info</p> |

Documents / Resources

| | |
|---|---|
|  | <p>HIKVISION Wireless Portable Emergency Button DS-PDEBP-EG2-WE [pdf] User Manual HIKVISION, Wireless, Portable, Emergency, Button, DS-PDEBP-EG2-WE</p> |
|---|---|

References

- [HOME](#)
- [Hikvision US | The world's largest video surveillance manufacturer |](#)