



# HIKVISION Wireless Emergency Button User Guide

[Home](#) » [Hikvision](#) » HIKVISION Wireless Emergency Button User Guide

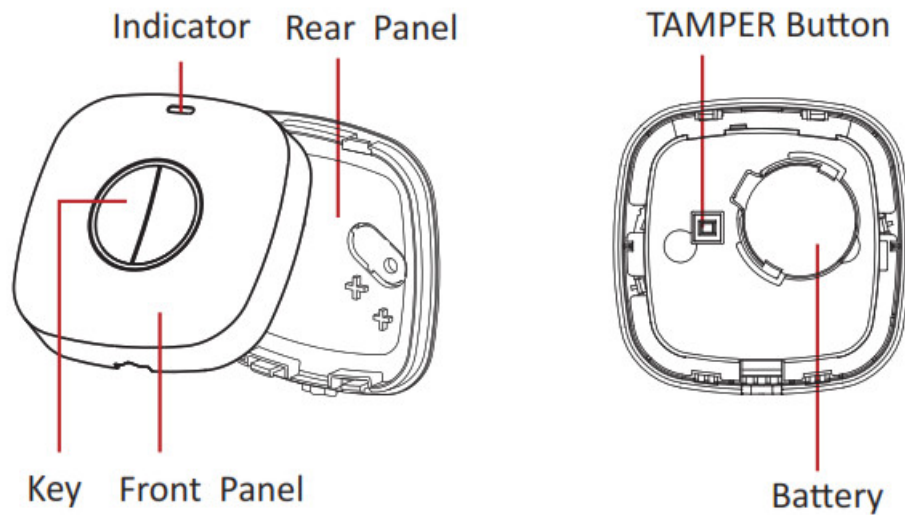


**DS-PDEB-EG2-WE**  
**Wireless Emergency Button**

## Contents [ [hide](#) ]

- [1 Appearance](#)
- [2 Enrollment](#)
- [3 Installation](#)
- [4 Test](#)
- [5 REPLACE BATTERY](#)
- [6 Function](#)
- [7 Formatting](#)
- [8 Set-Up with App](#)
- [9 Operation Caution and Device Maintenance](#)
- [10 Specification](#)
- [11 Documents / Resources](#)
  - [11.1 References](#)
- [12 Related Posts](#)

## Appearance



## Indicator

Alarm: Flashing red indicates the alarm is triggered.

Signal Strength: In the signal strength checking mode,

Signal LED turns green for 3 s: Strong.

Signal LED turns orange for 3 s: Medium.

Signal LED turns red for 3 s: Weak.

Signal LED flashes red for 3 s: Disconnected.

## TAMPER Button:

Tampering Alarm: Trigger alarm when the device is disassembled.

Formatting: Format the emergency button.

## Enrollment

1. Log in to the APP Store, download, and install the App.
2. Power on the security control panel.
3. Log in to the APP and tap the icon "+". Scan the QR code or input the control panel serial No. to add the control panel.
4. Log in to the APP Store, download, and install the App.
5. Power on the security control panel.
6. Log in to the APP and tap the icon "+". Scan the QR code or input the control panel serial No. to add the control panel.

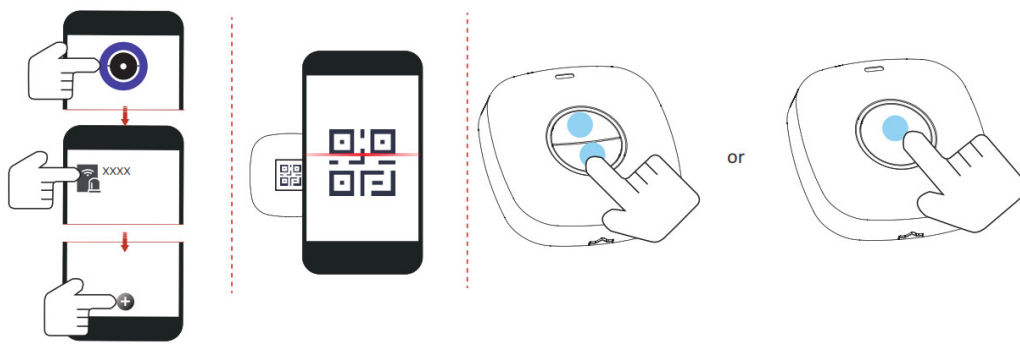
### 1.Enroll the Peripheral Locally

1. In the APP, tap the "Enrollment Mode" button on the control panel page to make the control panel enter the enrollment status.
2. Trigger the peripheral, and it will be automatically enrolled to the control panel.

### 2.Enroll the Peripheral

1. In the APP, tap the icon "+" and scan the QR code or serial No. on the peripheral.

2. Trigger the peripheral, and it will be automatically enrolled to the control panel.



## Installation

### Check signal strength

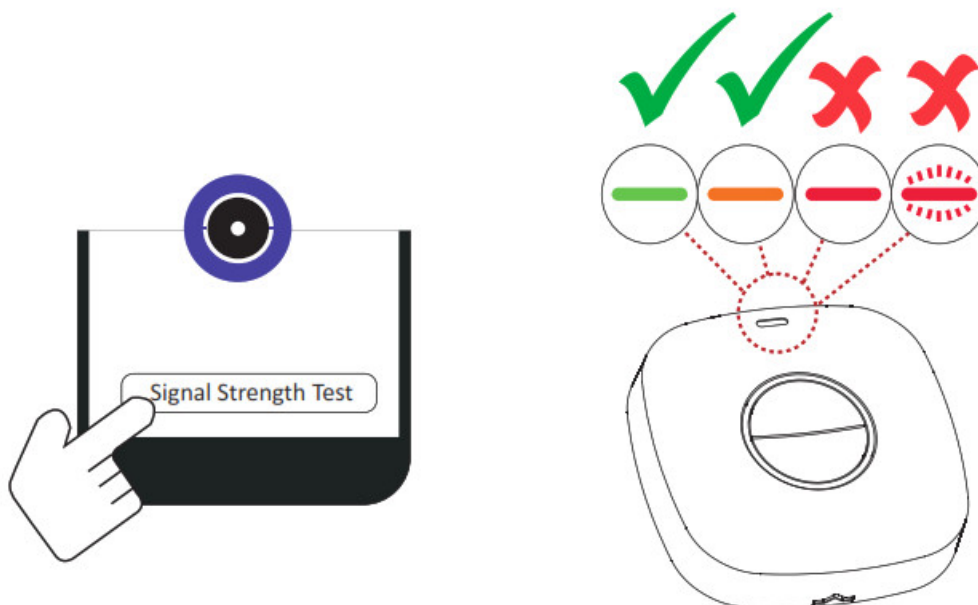
Enter the signal checking mode by operating on the control panel.

Solid green for 3 s: Strong signal.

Solid orange for 3 s: Medium signal.

Solid red for 3 s: Weak signal.

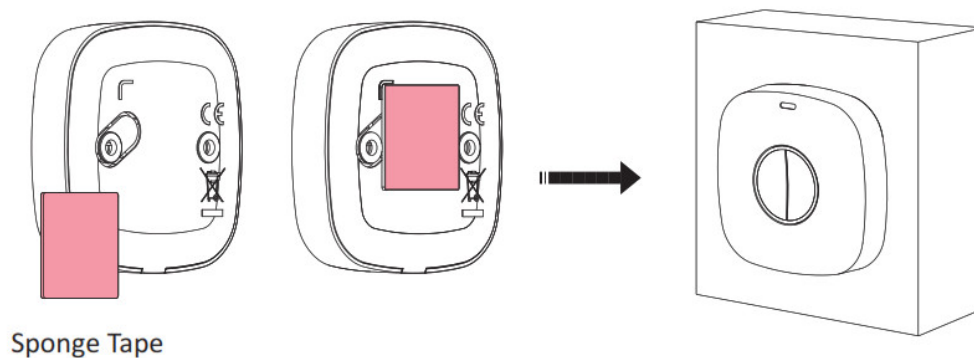
Red flashes for 3 s: Lost signal.



### Install the panic button

#### 1. Installation with Sponge Tape

1. Paste the sponge tape on the rear panel.
2. Paste the rear panel on the required place.



Sponge Tape

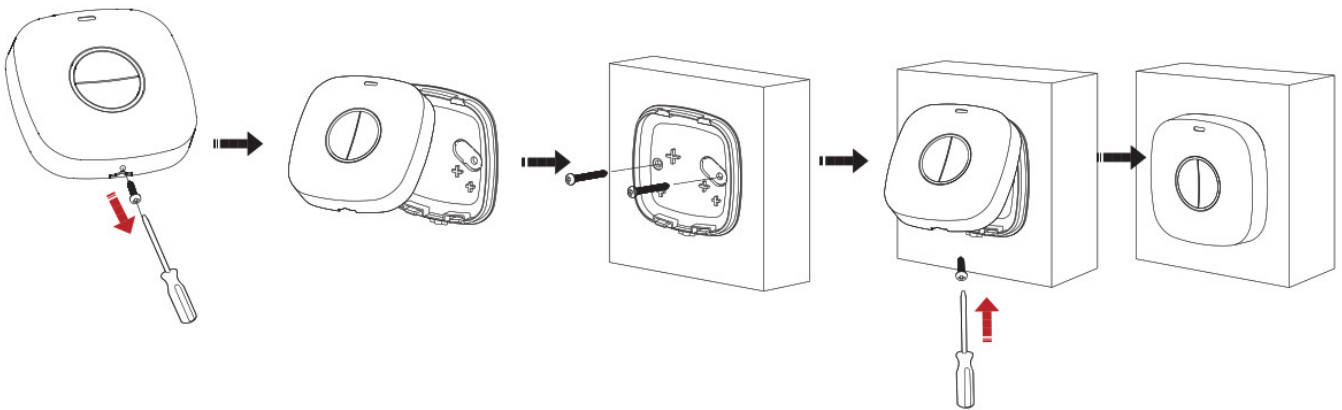
## Note: Non-EN compliant after Installation with Sponge Tape

### CAUTION

IF THE BATTERY COMPARTMENT DOES NOT CLOSE SECURELY, STOP USING THE PRODUCT AND KEEP IT AWAY FROM CHILDREN.

### 2. Installation with Screw

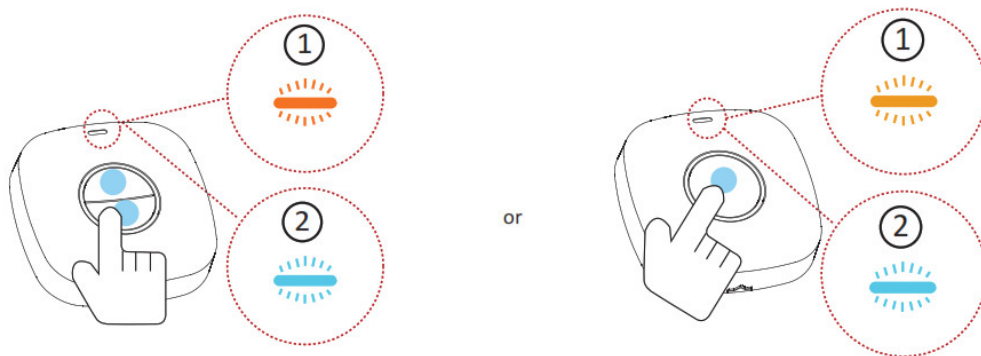
1. Insert and rotate the screwdriver in the groove to disassemble the device.
2. Secure the device to the wall with two screws through the holes in the rear panel.
3. Align the front panel and the rear panel and buckle them together.



### Test

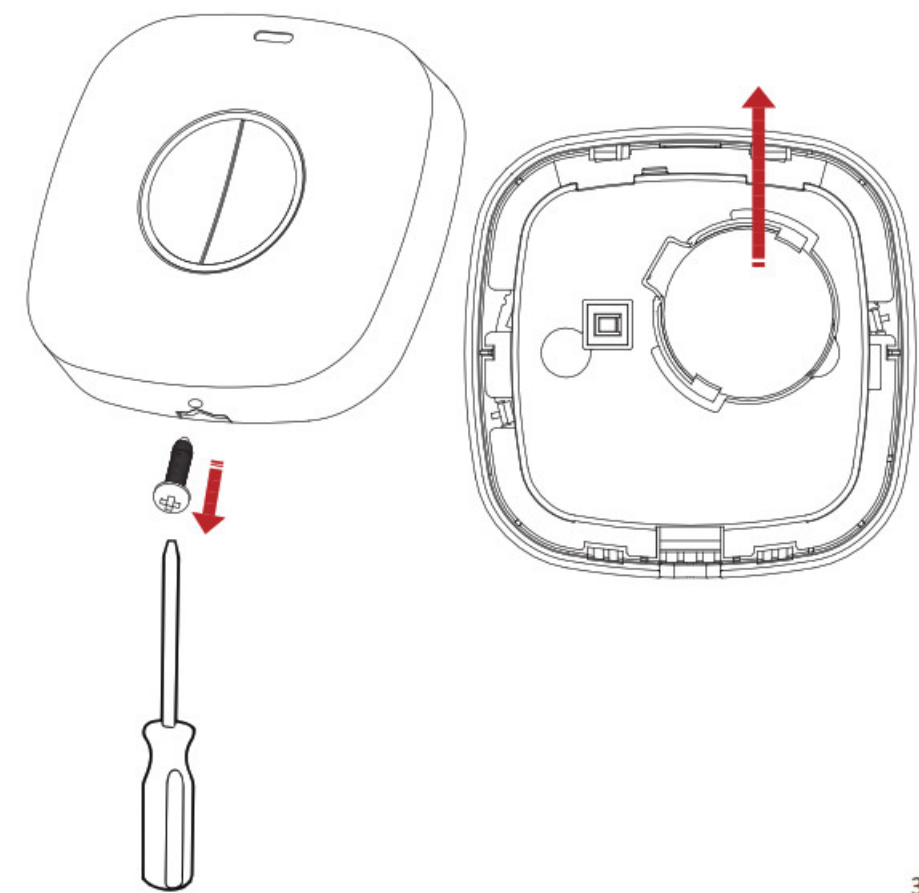
Trigger the emergency button, and the LED indicates the operation result.

1. Button
2. Alarm Received



### REPLACE BATTERY

1. Insert and rotate the screwdriver in the groove to disassemble the device.
2. Replace the battery.



3

#### CAUTION

RISK OF EXPLOSION IF BATTERY IS REPLACED BY AN INCORRECT TYPE.  
REPLACEMENT OF A BATTERY WITH AN INCORRECT TYPE CAN DEFEAT A SAFEGUARD.

#### CAUTION

DISPOSE OF USED BATTERIES ACCORDING TO THE INSTRUCTIONS AND LOCAL REGULATIONS.

#### CAUTION

CHEMICAL BURNING DANGER DOES NOT SWALLOW THE BATTERY KEEP NEW AND USED BATTERIES AWAY FROM THE CHILDREN. IF YOU THINK BATTERIES MIGHT HAVE BEEN SWALLOWED OR PLACED INSIDE ANY PART OF THE BODY, SEEK IMMEDIATE MEDICAL ATTENTION.

#### Function

Function	Description
Panic Alarm	Press the button to trigger the alarm while in an emergency condition. The LED keeps red for 2 s.
Medical Alarm	Set the panic button as a medical button via the AX PRO client. Press the button to trigger the alarm while in an emergency condition. The LED keeps red for 2 s.
Panic Alarm	Press the two buttons synchronously to trigger the alarm while in emergency conditions. The LED keeps red for 2 s.
Medical Alarm	Set the panic button as a medical button via the AX PRO client. Press the two buttons synchronously to trigger the alarm while in emergency conditions. The LED keeps red for 2 s.

## Formatting

Remove the battery. Hold the tamper button and meanwhile power the device on at the same time. The red LED flashes 3 times when the formatting is completed.

## Set-Up with App

You can view the device status including temperature, signal intensity, battery level, connection, 24-hour zone, and operation mode on the device page.

Tap the button to enter the settings page.

Function	Description
Zone Type	Select the zone type of the detector
Enable Silent Zone	Slide to green to make the zone keep silent while the alarm is triggered.
Cross Zone	If the alarm is triggered in both of the linked zones within the set time, two-alarm messages will be reported.
Link Camera	Link with a camera for intruder verification.
Polling Rate	Set the interval of a heartbeat.
Signal Strength Test	Enter the test mode, and view the LED indication.

## Operation Caution and Device Maintenance

- All the electronic operations should be strict in compliance with the electrical safety regulations, fire prevention regulations, and other related regulations in your local region.
- Do not drop the device or subject it to physical shock, and do not expose it to high electromagnetism radiation. Avoid the equipment installation on vibrations surfaces or places subject to shock (ignorance can cause equipment damage).
- Please make sure that the power has been disconnected before you wire, install or dismantle the device.
- If smoke, odors, or noise rise from the device, turn off the power at once and unplug the power cable, and then please contact the service center.
- Do not drop the device or subject it to physical shock, and do not expose it to high electromagnetism radiation. Avoid the equipment installation on vibrations surfaces or places subject to shock (ignorance can cause equipment damage).
- Do not place the device in extremely hot (refer to the specification of the device for the detailed operation temperature), cold, dusty or damp locations, and do not expose it to high electromagnetic radiation.
- The device for indoor use shall be kept from rain and moisture.  
Exposing the equipment to direct sunlight, low ventilation or heat source such as heater or radiator is forbidden (ignorance can cause fire danger).
- Do not aim the device at the sun or extra bright places. A blooming or smear may occur otherwise (which is not a malfunction, however), and affecting the endurance of the sensor at the same time.
- Improper use or replacement of the battery may result in a hazard of explosion. Replace with the same or equivalent type only. Dispose of

used batteries according to the instructions provided by the battery manufacturer.

- Do not expose the device to corrosive gas. Otherwise, equipment damage may occur.
- Do not expose the device to an explosive situation.

## Specification

LED indicator	Red (alarm)
LED alarm confirmation	Flashing LED
Tamper protection	Front & Back
Encapsulated plastic	Yes
Operating temperature	•10 °C to 55°C (14 °F to 131 °F) •10 °C to 40 °C (14 °F to 104 °F) EN Certified
Storage temperature	•20 °C to 60°C (-4 °F to 140 °F)
Operating humidity	10% to 90%
Dimension (W x H x D)	63.8mm x 63.8mm x 17.9mm
Weight	45.5g
Button colour	Red or green keymat
Wireless technology	Tri-X Wireless Technology
Environment temperature indicator	Yes
2-way wireless communication	Yes
Transmission frequency	868MHz
Frequency hopping	Multichannel transmission
Transmission encryption	AES-128 encryption
Signal strength indicators	Yes
RF range	1.2Km (Open area)
Enrolling methods	Power up, Remote ID, QR code
Battery	CR2450 x 1 (included) 620mAh capacity
Standard battery life	5 years
PS type	Type C
Low voltage level	2.60 V
Consumption	Quiescent Current: 23.02uA Max: 36.89mA
Classification	Use inside the supervised premises

EN 50131-1:2006+A1: 2009+A2:2017  
EN 50131-3:2009  
EN 50131-5-3:2017

Security Grade(SG) 2  
Environmental Class(EC) II  
Certified by Telefication

©2020 Hangzhou Hikvision Digital Technology Co., Ltd. All rights reserved.

#### About this Manual

The Manual includes instructions for using and managing the Product. Pictures, charts, images, and all other information hereinafter are for description and explanation only. The information contained in the Manual is subject to change, without notice, due to firmware updates or other reasons. Please find the latest version of this Manual at the Hikvision website (<https://www.hikvision.com/>).

Please use this Manual with the guidance and assistance of professionals trained in supporting the Product.

## HIKVISION

and other Hikvision trademarks and logos are the properties of Hikvision in various jurisdictions. Other trademarks and logos mentioned are the properties of their respective owners.

#### Disclaimer

TO THE MAXIMUM EXTENT PERMITTED BY APPLICABLE LAW, THIS MANUAL AND THE PRODUCT DESCRIBED, WITH ITS HARDWARE, SOFTWARE, AND FIRMWARE, ARE PROVIDED “AS IS” AND “WITH ALL FAULTS AND ERRORS”. HIKVISION MAKES NO WARRANTIES, EXPRESS OR IMPLIED, INCLUDING WITHOUT LIMITATION, MERCHANTABILITY, SATISFACTORY QUALITY, OR FITNESS FOR A PARTICULAR PURPOSE. THE USE OF THE PRODUCT BY YOU IS AT YOUR OWN RISK. IN NO EVENT WILL HIKVISION BE LIABLE TO YOU FOR ANY SPECIAL, CONSEQUENTIAL, INCIDENTAL, OR INDIRECT DAMAGES, INCLUDING, AMONG OTHERS, DAMAGES FOR LOSS OF BUSINESS PROFITS, BUSINESS INTERRUPTION, OR LOSS OF DATA, CORRUPTION OF SYSTEMS, OR LOSS OF DOCUMENTATION, WHETHER BASED ON BREACH OF CONTRACT, TORT (INCLUDING NEGLIGENCE), PRODUCT LIABILITY, OR OTHERWISE, IN CONNECTION WITH THE USE OF THE PRODUCT, EVEN IF HIKVISION HAS BEEN ADVISED OF THE POSSIBILITY OF SUCH DAMAGES OR LOSS.

YOU ACKNOWLEDGE THAT THE NATURE OF THE INTERNET PROVIDES FOR INHERENT SECURITY RISKS, AND HIKVISION SHALL NOT TAKE ANY RESPONSIBILITIES FOR ABNORMAL OPERATION, PRIVACY LEAKAGE, OR OTHER DAMAGES RESULTING FROM CYBER-ATTACKS, HACKER ATTACKS, VIRUS INSPECTIONS, OR OTHER INTERNET SECURITY RISKS; HOWEVER, HIKVISION WILL PROVIDE TIMELY TECHNICAL SUPPORT IF REQUIRED. YOU AGREE TO USE THIS PRODUCT IN COMPLIANCE WITH ALL APPLICABLE LAWS, AND YOU ARE SOLELY RESPONSIBLE FOR ENSURING THAT YOUR USE CONFORMS TO THE APPLICABLE LAW. ESPECIALLY, YOU ARE RESPONSIBLE, FOR USING THIS PRODUCT IN A MANNER THAT DOES NOT INFRINGE ON THE RIGHTS OF THIRD PARTIES, INCLUDING WITHOUT LIMITATION, RIGHTS OF PUBLICITY, INTELLECTUAL PROPERTY RIGHTS, OR DATA PROTECTION, AND OTHER PRIVACY RIGHTS. YOU SHALL NOT USE THIS PRODUCT FOR ANY PROHIBITED END-USES, INCLUDING THE DEVELOPMENT OR PRODUCTION OF WEAPONS OF MASS DESTRUCTION, THE DEVELOPMENT OR PRODUCTION OF CHEMICAL OR BIOLOGICAL WEAPONS, ANY ACTIVITIES IN THE CONTEXT RELATED TO ANY NUCLEAR EXPLOSIVE OR UNSAFE NUCLEAR FUEL-CYCLE, OR IN SUPPORT OF HUMAN RIGHTS ABUSES. IN THE EVENT OF ANY CONFLICTS BETWEEN THIS MANUAL AND THE APPLICABLE LAW, THE LATTER PREVAILS.



This product and – if applicable – the supplied accessories too are marked with “CE” and comply therefore with the applicable harmonized European standards listed under the EMC Directive 2014/30/EU, RE Directive 2014/53/EU, the RoHS Directive 2011/65/EU.



2012/19/EU (WEEE directive): Products marked with this symbol cannot be disposed of as unsorted municipal waste in the European Union. For proper recycling, return this product to your local supplier upon the



purchase of equivalent new equipment, or dispose of it at designated collection points. For more information see: [www.recyclethis.info](http://www.recyclethis.info)



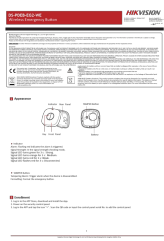
replacement of a battery with an incorrect type that can defeat a safeguard (for example, in the case of some lithium battery types);

- disposal of a battery into fire or a hot oven, or mechanically crushing or cutting of a battery, that can result in an explosion;
- leaving a battery in an extremely high temperature surrounding environment that can result in an explosion or the leakage of flammable liquid or gas; and
- a battery subjected to the extremely low air pressure that may result in an explosion or the leakage of flammable liquid or gas



2006/66/EC (battery directive): This product contains a battery that cannot be disposed of as unsorted municipal waste in the European Union. See the product documentation for specific battery information. The battery is marked with this symbol, which may include lettering to indicate cadmium (Cd), lead (Pb), or mercury (Hg). For proper recycling, return the battery to your supplier or to a designated collection point. For more information see: [www.recyclethis.info](http://www.recyclethis.info)

## Documents / Resources

	<a href="#">HIKVISION Wireless Emergency Button</a> [pdf] User Guide Wireless Emergency Button, DS-PDEB-EG2-WE
--	---

## References

- [HOME](#)
- [Hikvision US | The world's largest video surveillance manufacturer |](#)