



# HIKVISION Solar Powered PT Camera User Guide

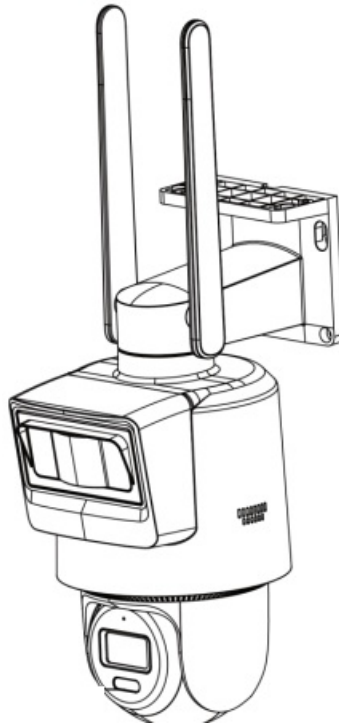
[Home](#) » [Hikvision](#) » HIKVISION Solar Powered PT Camera User Guide 

## Contents

- [1 HIKVISION Solar Powered PT Camera](#)
- [2 Product Information](#)
- [3 Product Usage Instructions](#)
- [4 Symbols and Marks](#)
- [5 Interface](#)
- [6 Camera Indicator](#)
- [7 MicroSD Card and SIM Card Installation](#)
- [8 Camera Installation](#)
- [9 Documents / Resources](#)
  - [9.1 References](#)
- [10 Related Posts](#)



**HIKVISION Solar Powered PT Camera**



## Product Information

### Specifications

- Model: UD38022B-A
- Power Source: Solar-powered supply system
- Storage: MicroSD card (not included)
- Network Interface: For network debugging only
- Indicator Lights: Solid red, Fast-flashing red, Slow-flashing red, Fast-flashing blue, Slow-flashing blue
- Installation Options: Wall Mount, Vertical Pole Mount, Ceiling Mount
- Waterproof: Yes, suitable for outdoor installation

## Product Usage Instructions

### Interface Setup

1. Connect the network interface for debugging purposes only.
2. Connect the power input interface to the camera for power supply.
3. Connect the solar panel power output interface to the battery for power supply.
4. Connect the battery power input interface to the battery for power input.
5. Use the load output interface to connect the battery with external devices like the camera.

### Camera Indicator:

- Solid red: Powering up
- Fast-flashing red: Memory card or temperature sensor exception
- Slow-flashing red (1): Not activated or not connected to the network
- Slow-flashing red (2): Low power mode (sleep mode)

- Fast-flashing blue: Network connection failed
- Slow-flashing blue: Operating normally or waiting for activation

#### **MicroSD Card and SIM Card Installation:**

- Insert a MicroSD card (not included) for storage. SIM card not required.

#### **Solar-Powered Supply System Installation:**

##### **D.1 Wall Mount**

- Follow instructions for wall mounting the solar panel and battery.

##### **D.2 Vertical Pole Mount**

- Follow instructions for mounting on a vertical pole.

#### **FAQ**

##### **Q: What do the different indicator lights mean?**

A: Solid red indicates powering up, fast-flashing red indicates exceptions, slow-flashing red shows activation status, fast-flashing blue is for network connection issues, and slow-flashing blue indicates normal operation or waiting for activation.

#### **Solar-Powered PT Camera Setup**

Quick Start Guid











User Manual

Read this manual before using the product.

Product appearance is for reference only and may differ from the actual product.

#### **Symbols and Marks**

	Warning		i. Not necessarily included accessory. ii. Variable accessory amount. iii. Skip this step if not required.
	Correct	microSD 	MicroSD card
	Incorrect	SIM 	SIM card
	Purchase separately		Other situations omitted

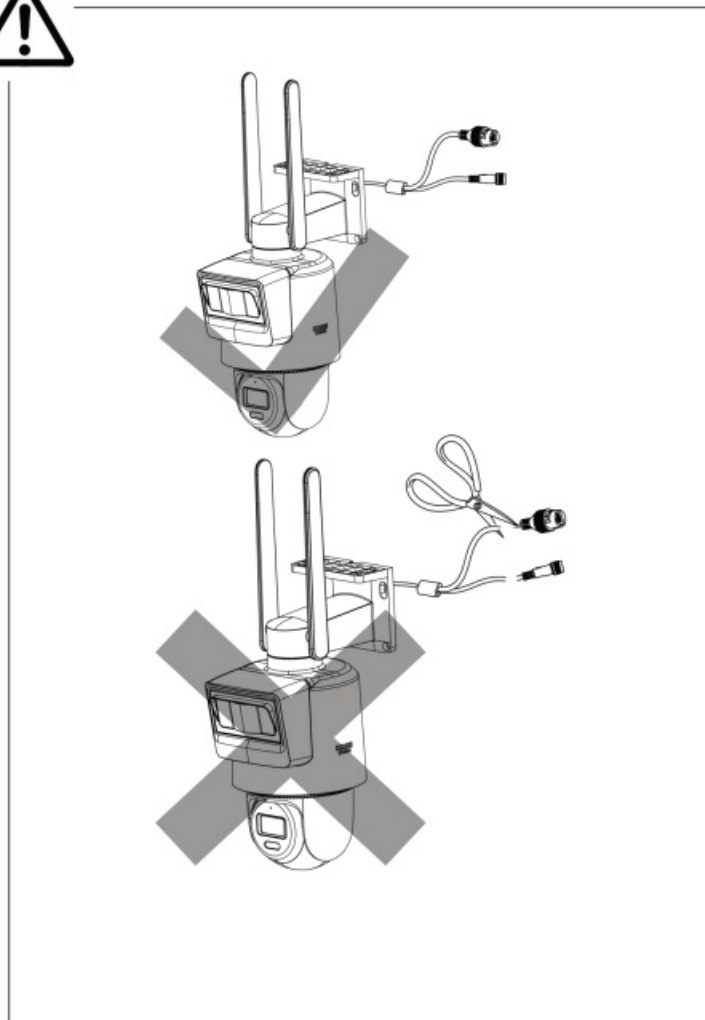
#### Related Documentation



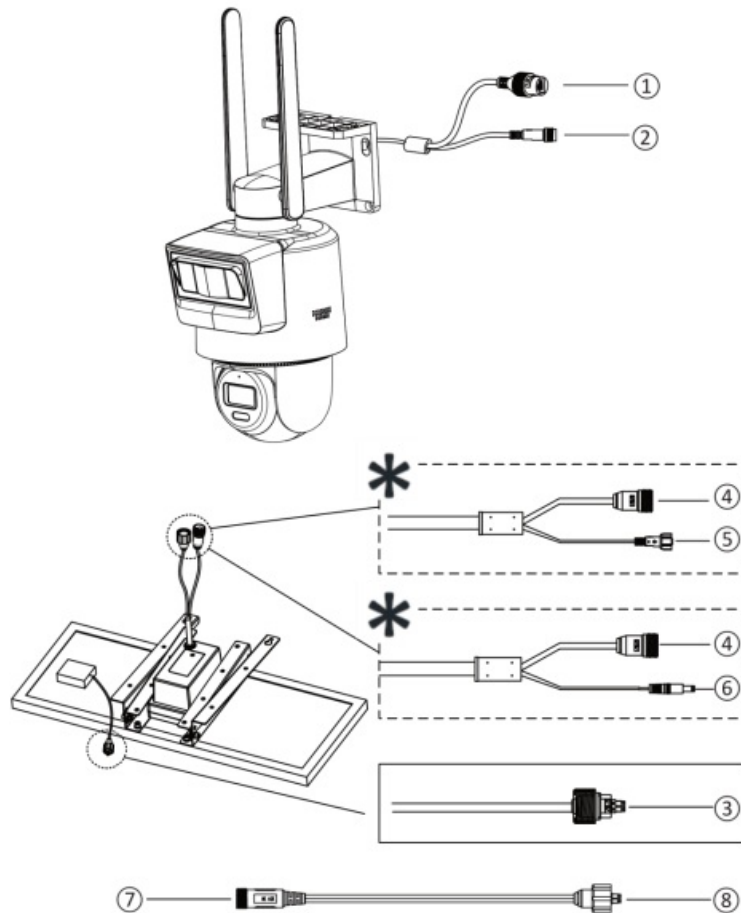
Protective Measures for  
Outdoor Installation



Activate and Access  
Network Camera



## Interface



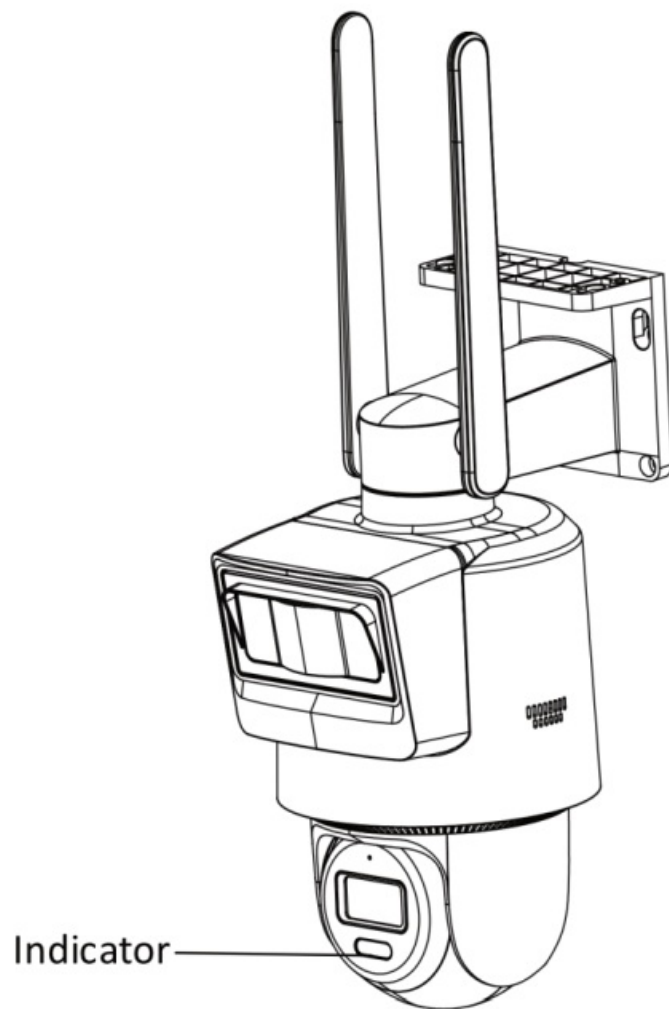
## Camera

1. Network interface: For network debugging only. Disconnect the interface after debugging.
2. Power input interface: Connect it with ⑤ or ⑥ for camera power input.
- Solar-powered supply system:
3. Solar panel power output interface: Connect it with ④ for battery power supply.
4. Battery power input interface: Connect it with ③ for battery power input.
5. Load output interface: It is used to connect the battery with external devices such as the camera for power supply. You can view the battery percentage with the browser, software, and app. The client varies with the models.
6. Load output interface: It is used to connect the battery with external devices such as the camera for power supply.
7. &⑧ Converter interface:
 

Before the initial use of the solar-powered supply system, it is recommended to charge the battery with a power adapter. Connect ⑧ with ④ and connect ⑦ with a 12 VDC power adapter. The converter cable is for debugging only. Disconnect the interface after debugging.

**Note:** The interface varies with the models. Please refer to the product datasheet for details.

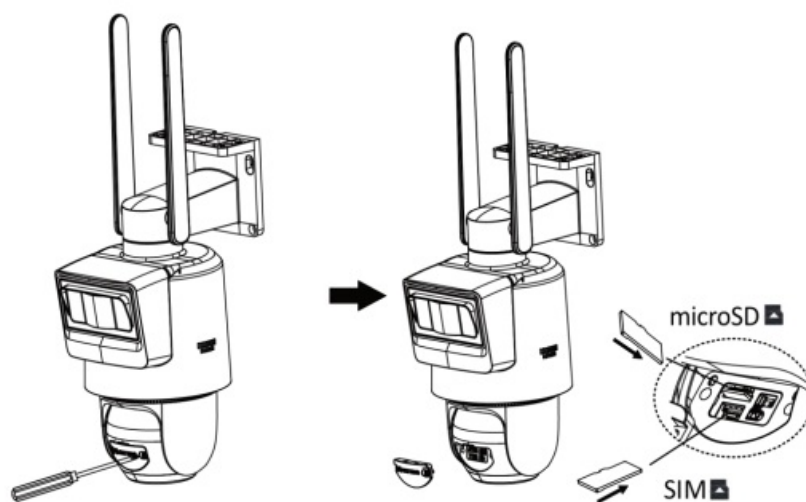
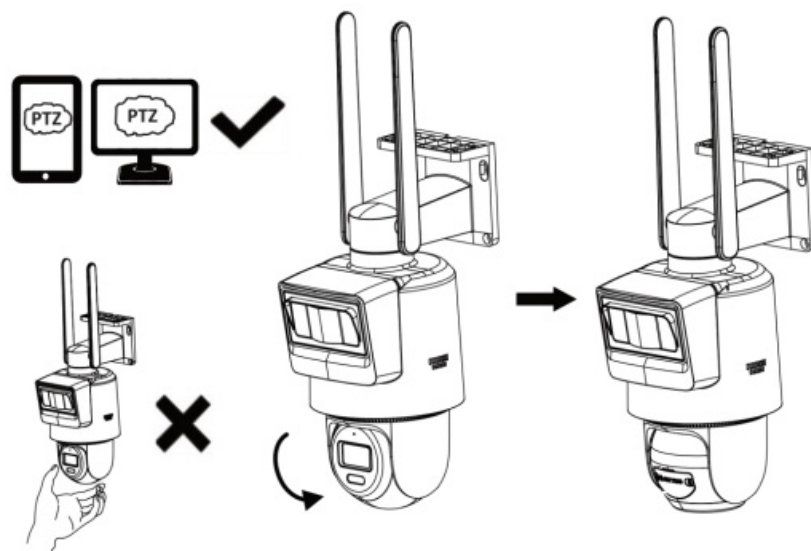
## Camera Indicator



### **Indicator**

1. Solid red: The camera is powering up.
2. Fast-flashing red: Memory card exception or other exceptions, such as the temperature sensor exception.
3. Slow-flashing red (1): The camera is not activated and not connected to the network. The frequency is approximately on for 2 seconds, off for 2 seconds.
4. Slow-flashing red (2): The camera is in low power mode (sleep mode). The frequency is approximately on for 2 seconds, off for 5 seconds.
5. Fast-flashing blue: Network connection failed.
6. Slow-flashing blue: The camera is operating normally or waiting for activation.

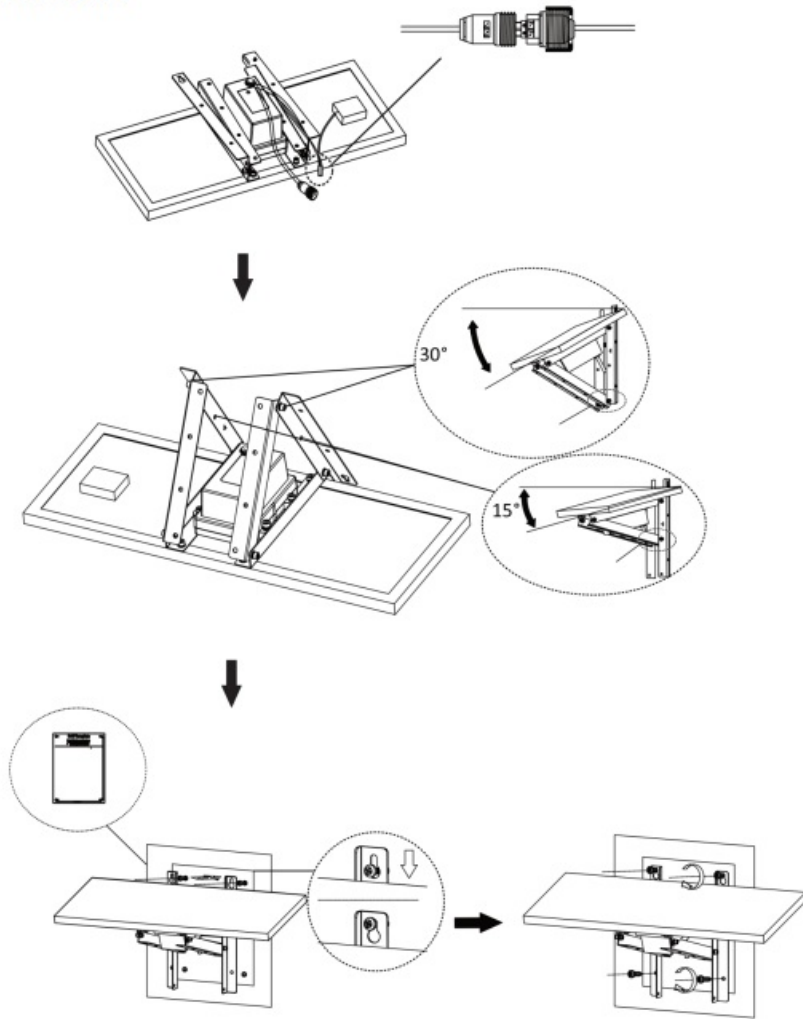
### **MicroSD Card and SIM Card Installation**



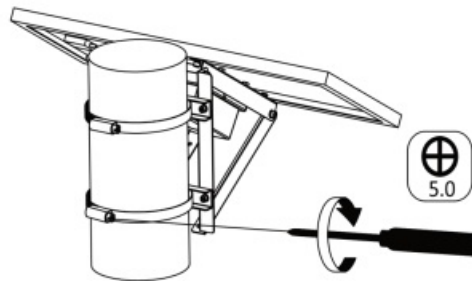
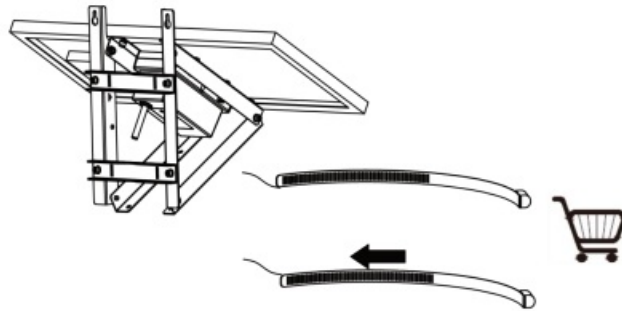
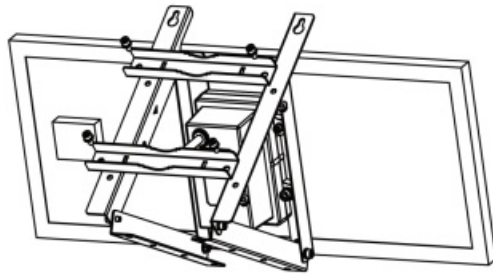
## Solar-Powered Supply System Installation



### D.1 Wall Mount

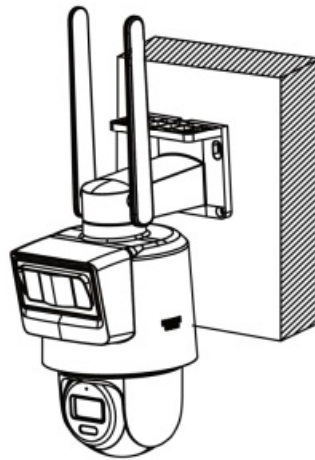
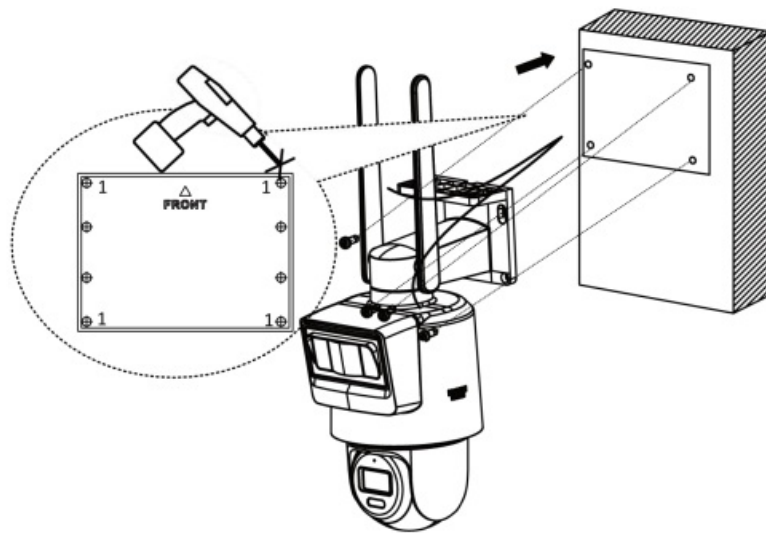


### Vertical Pole Mount

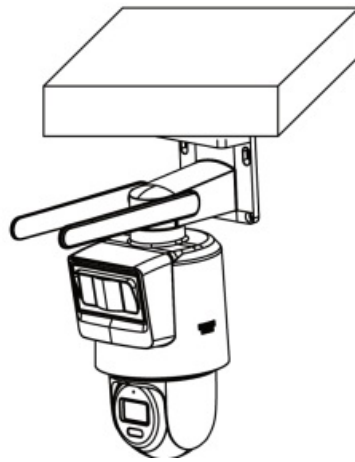
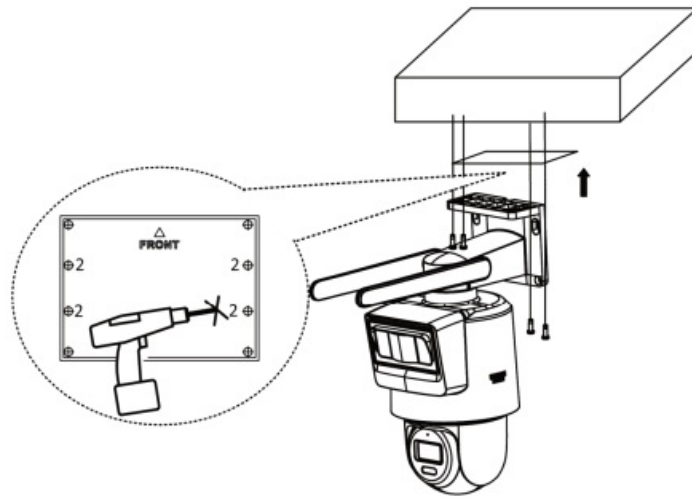


## Camera Installation

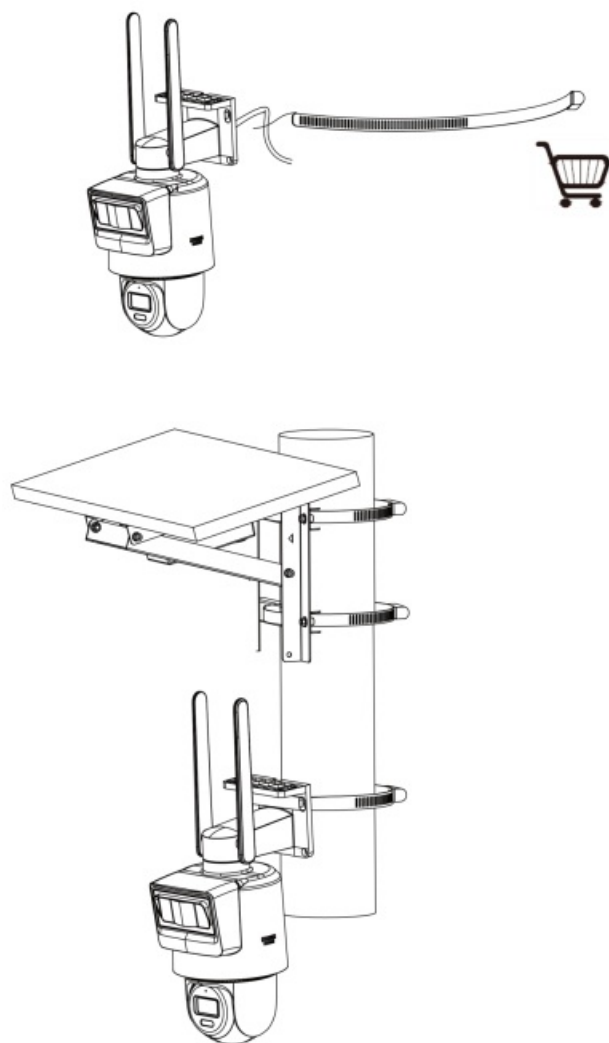
### Wall Mount



**Ceiling Mount**

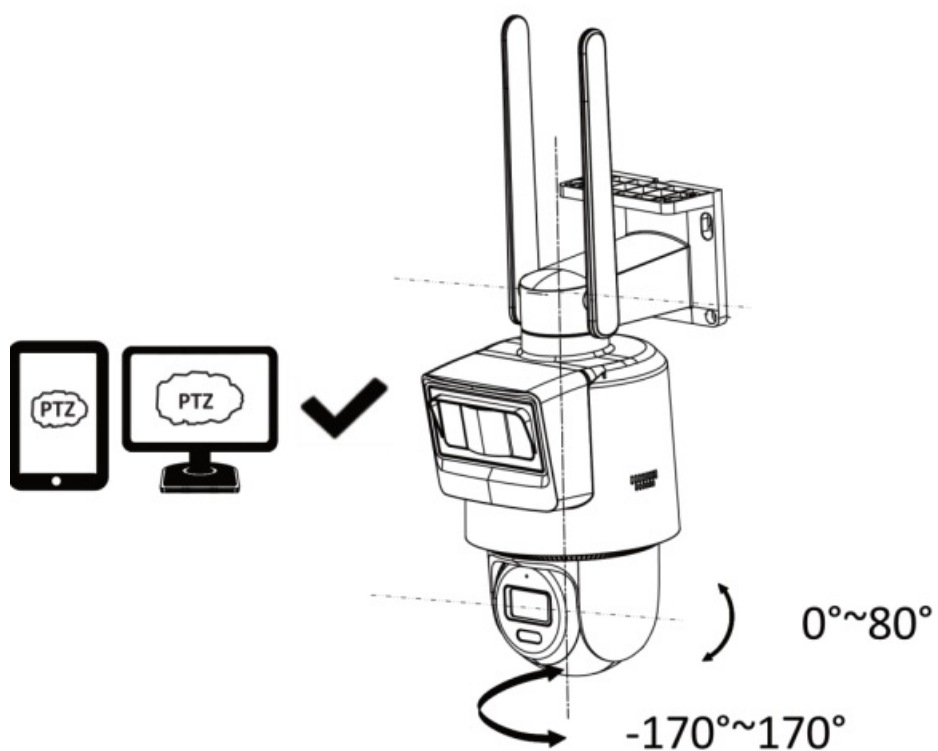


**Vertical Pole Mount**

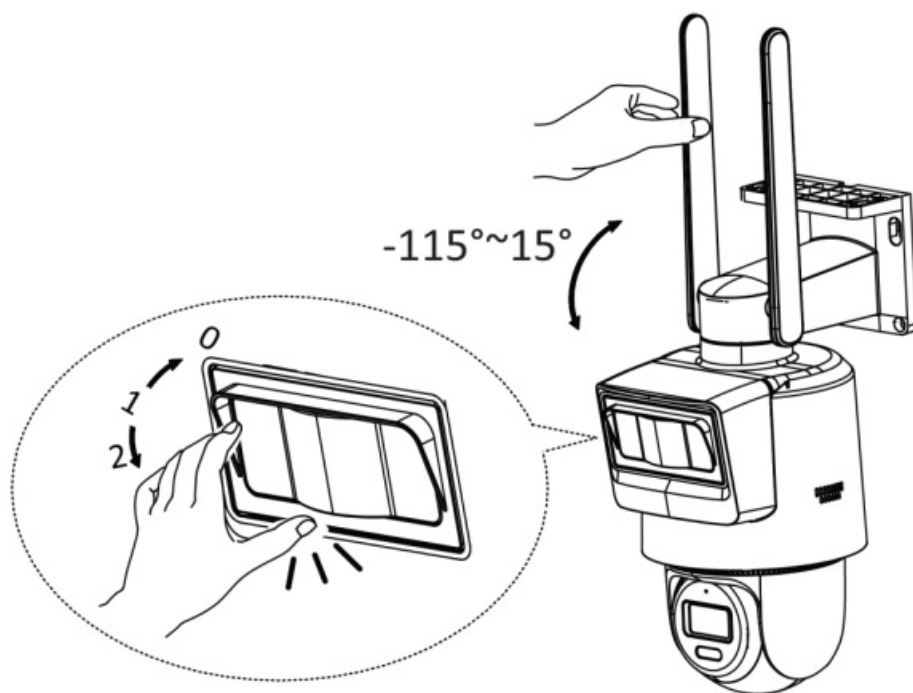


## Camera: Angle Adjustment

### View Adjustment

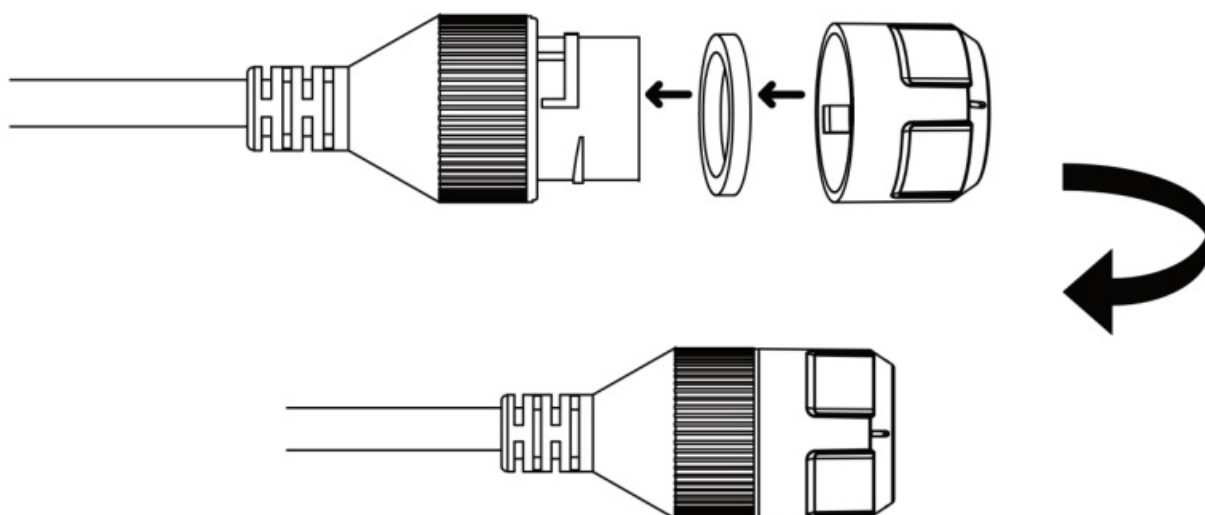


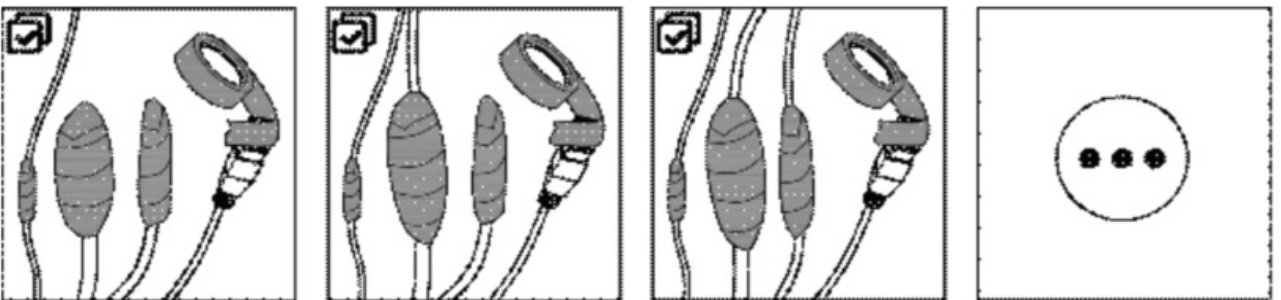
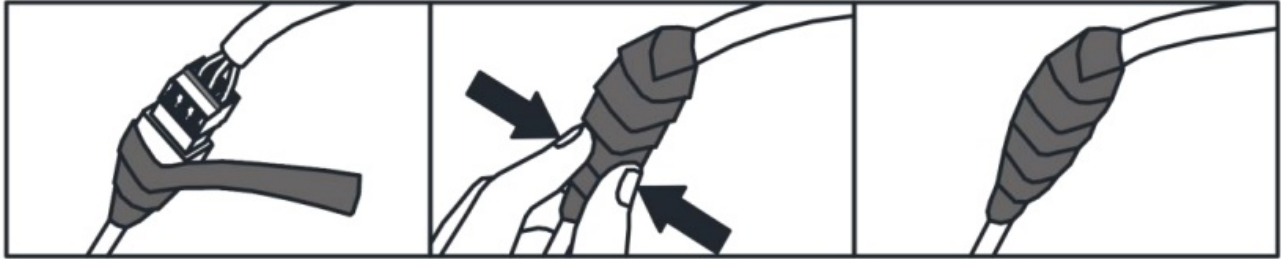
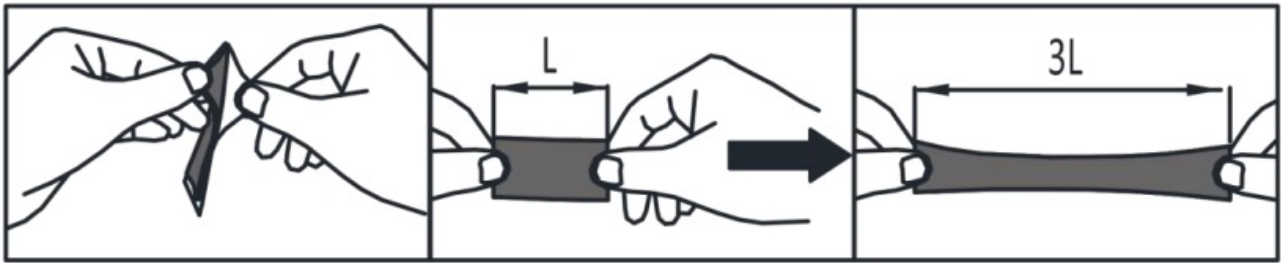
## Antenna and Radar Adjustment



**Note:** The adjustable angle varies with the models. For the radar detection angle, please refer to the product datasheet for details.


## Waterproof for Outdoor Installation





UD38022B-A

## Documents / Resources

	<p><a href="#">HIKVISION Solar Powered PT Camera</a> [pdf] User Guide Solar Powered PT Camera, Powered PT Camera, PT Camera</p>
---	---

## References

- [User Manual](#)

[Manuals+.](#) [Privacy Policy](#)

This website is an independent publication and is neither affiliated with nor endorsed by any of the trademark owners. The "Bluetooth®" word mark and logos are registered trademarks owned by Bluetooth SIG, Inc. The "Wi-Fi®" word mark and logos are registered trademarks owned by the Wi-Fi Alliance. Any use of these marks on this website does not imply any affiliation with or endorsement.