



## HIKVISION PG2387C Network Camera User Manual

[Home](#) » [Hikvision](#) » HIKVISION PG2387C Network Camera User Manual

# HIKVISION®

### PG2387C Network Camera User Manual



**Statement**  
**Network Camera User Manual**  
**Network Camera**  
**2021-Version01**

Thank you very much for purchasing our products. If you have any questions or needs during the use, please feel free to contact us.

This manual is written according to the current software and hardware. Due to the update, modification and upgrade of the software version, and the upgrade of the hardware device, the technical problems described in the manual may be inaccurate or imperfect. Please understand.

If you cannot solve the problem according to the manual during use, please call our technical department for relevant operation methods. The manual will be updated regularly.

## Chapter1 System Requirement

### Contents [ [hide](#)

#### 1 Operating System

#### 2 Chapter 2 Network Connection

#### 3 Chapter 3 Access to the Network Camera

#### 4 Chapter 4 Camera General Configurations

#### 5 How to reset the password?

#### 6 Documents / Resources

##### 6.1 References

#### 7 Related Posts

## Operating System

Microsoft Windows XP SP1/7/8/10

### CPU

3.0 GHz or higher

### RAM

4G or higher

### Display

1024×768 resolution or higher

### Web Browser

#### For a camera that supports plug-in free live view

Internet Explorer 8 11, Mozilla Firefox 30.0 and above version, and Google Chrome 41.0 and above version.

**Note:** For Google Chrome 45 and its above version or Mozilla Firefox 52 and its above version which are plug-in free, Picture and Playback functions are hidden. To use mentioned functions via web browser, change to their lower version, or change to Internet Explorer 8.0 and above version.

## Chapter 2 Network Connection

### 2.1 Setting the Network Camera over the LAN

#### Purpose:

To view and configure the camera via a LAN, you need to connect the network camera in the same subnet with your computer, and install the AjDevTools or SADP software to search and change the IP of the network camera.

#### AjDevTools: Download

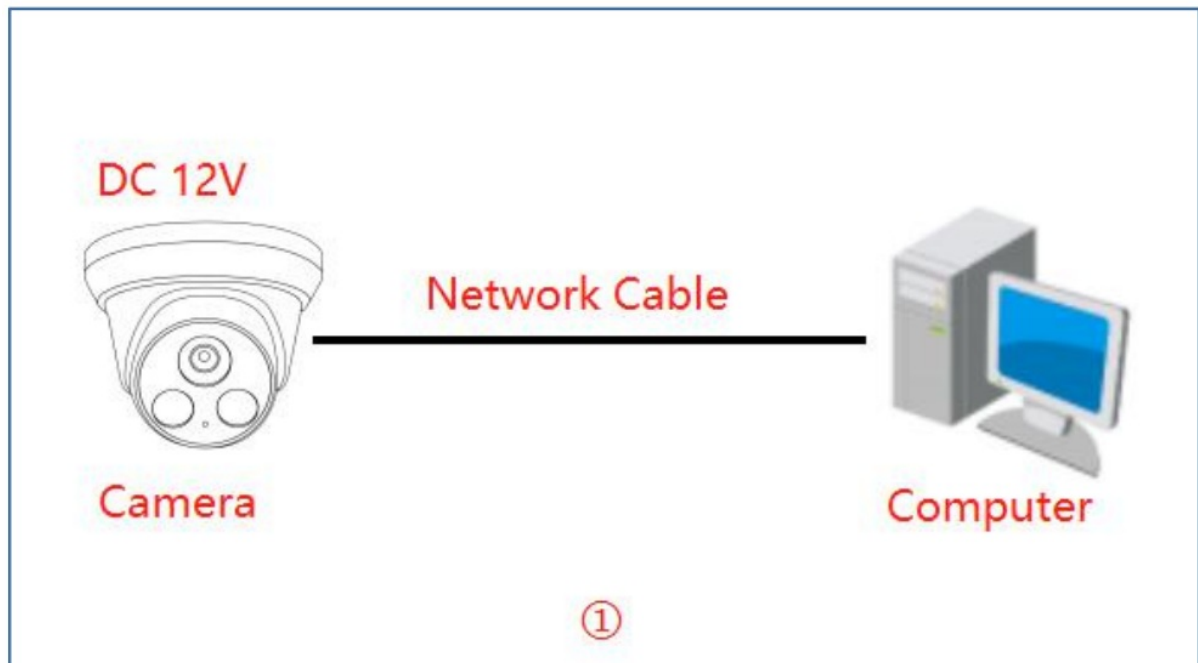
#### SADP: Download

### 2.2 Wiring over the LAN

The following figures show the two ways of cable connection of a network camera and a computer:

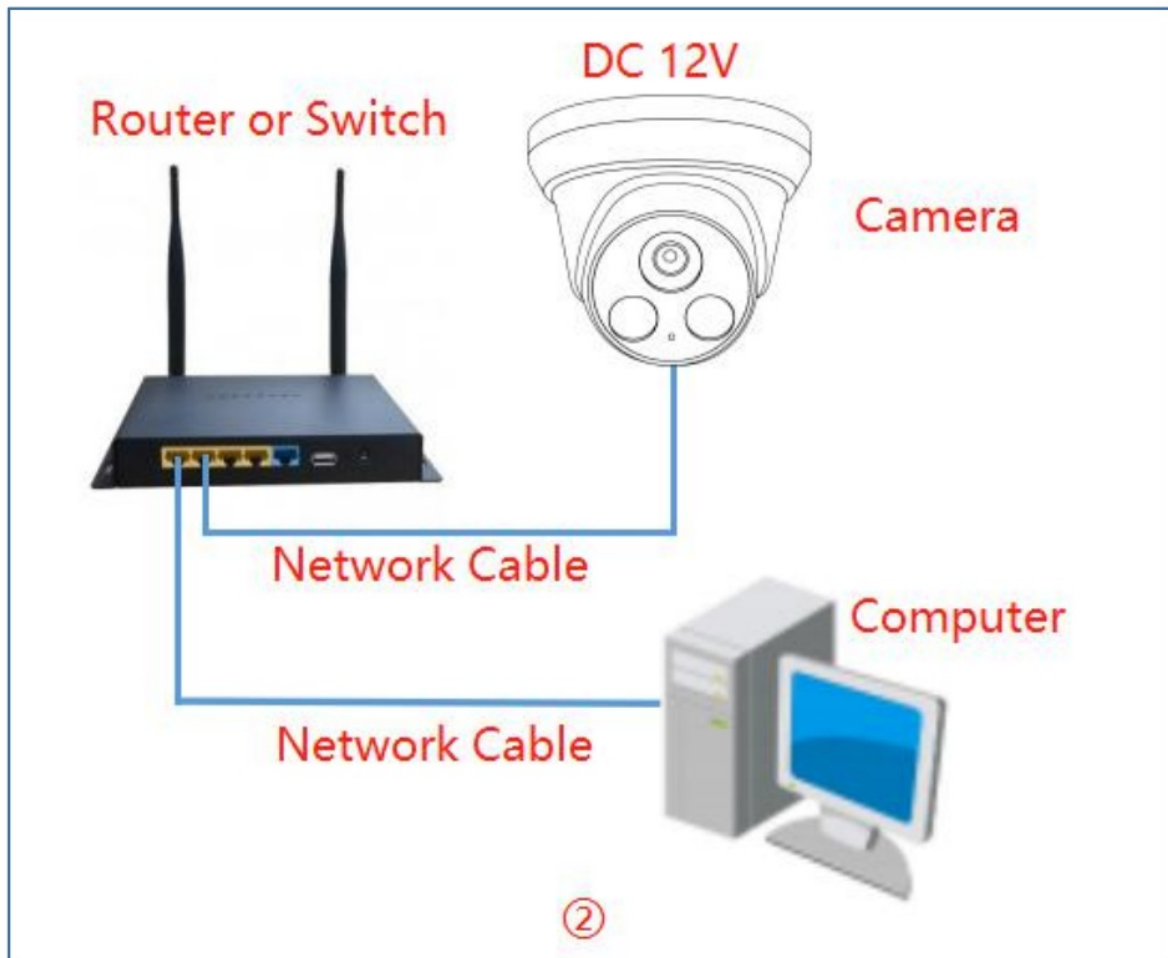
**Purpose:** To test the network camera, you can directly connect the network camera to the computer with a network cable.

**Connecting directly must supply the camera with DC 12V power supply**



#### Connecting Directly

Set network camera over the LAN via a switch or a router. (If it is a POE switch, you do not need to power the camera).



#### Connecting via a Router or a Switch

### Chapter 3 Access to the Network Camera

#### 3.1 Accessing by Web Browsers

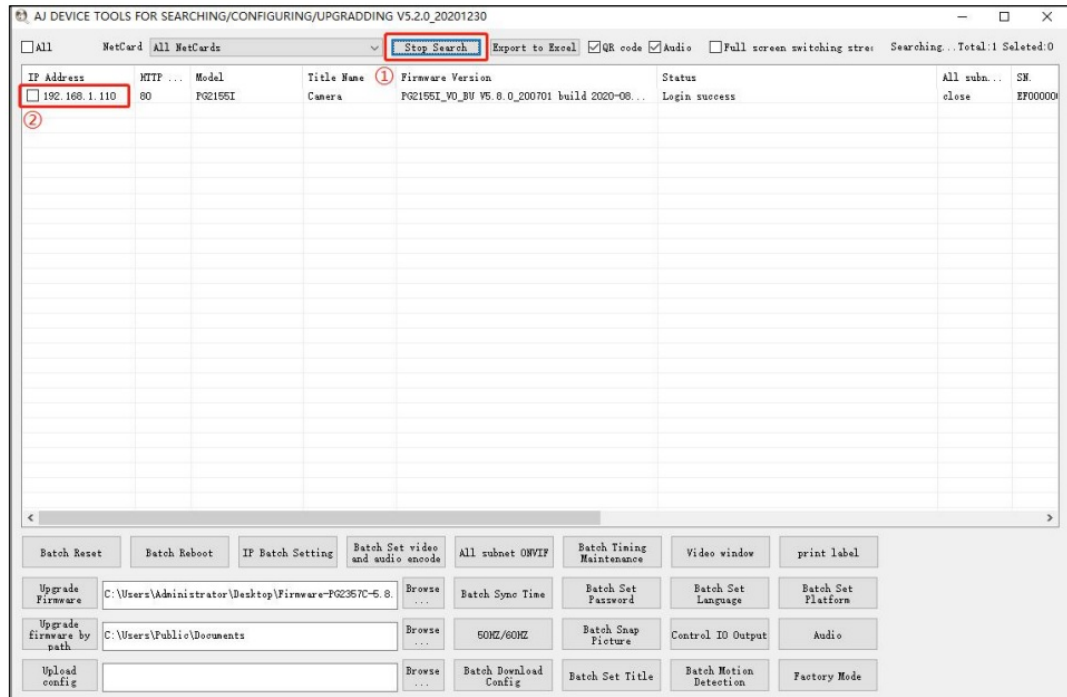
##### Steps:

1. Computer download and install the AjDevTools or SADP software tool.

2. After installation, open the software and click the Start Search.

1 Search for the IP address of the camera

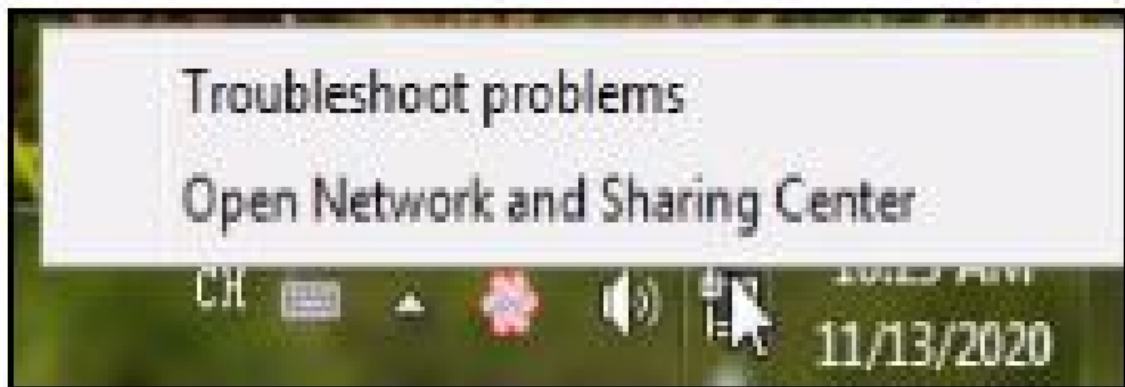
2 Query the IP address of the Camera

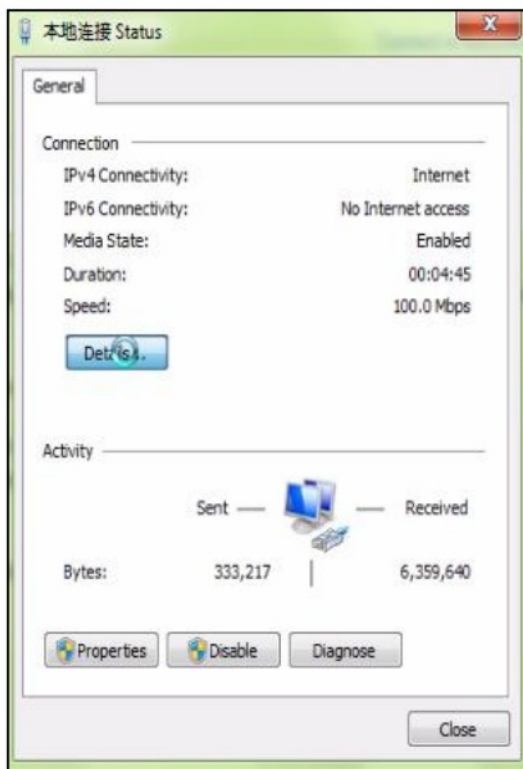


3. Query your computer

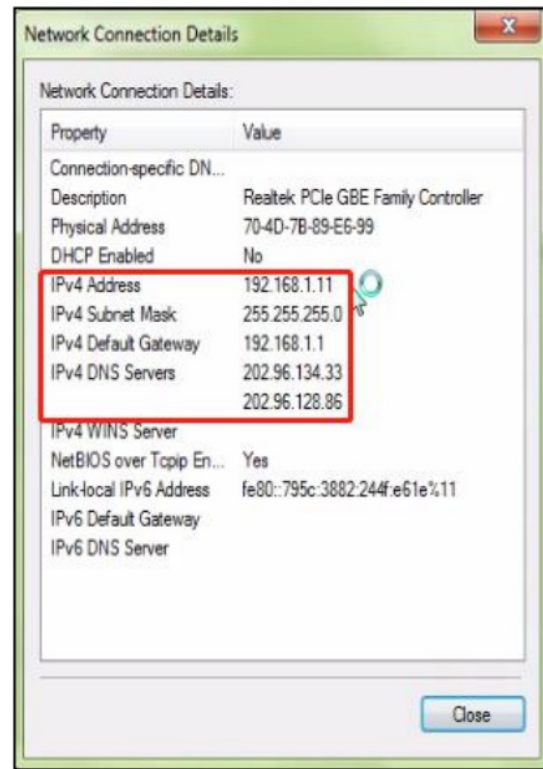
IP address Open Network and Sharing Center— Details

View your computer's IPv4 Address Subnet Mask and Gateway





②

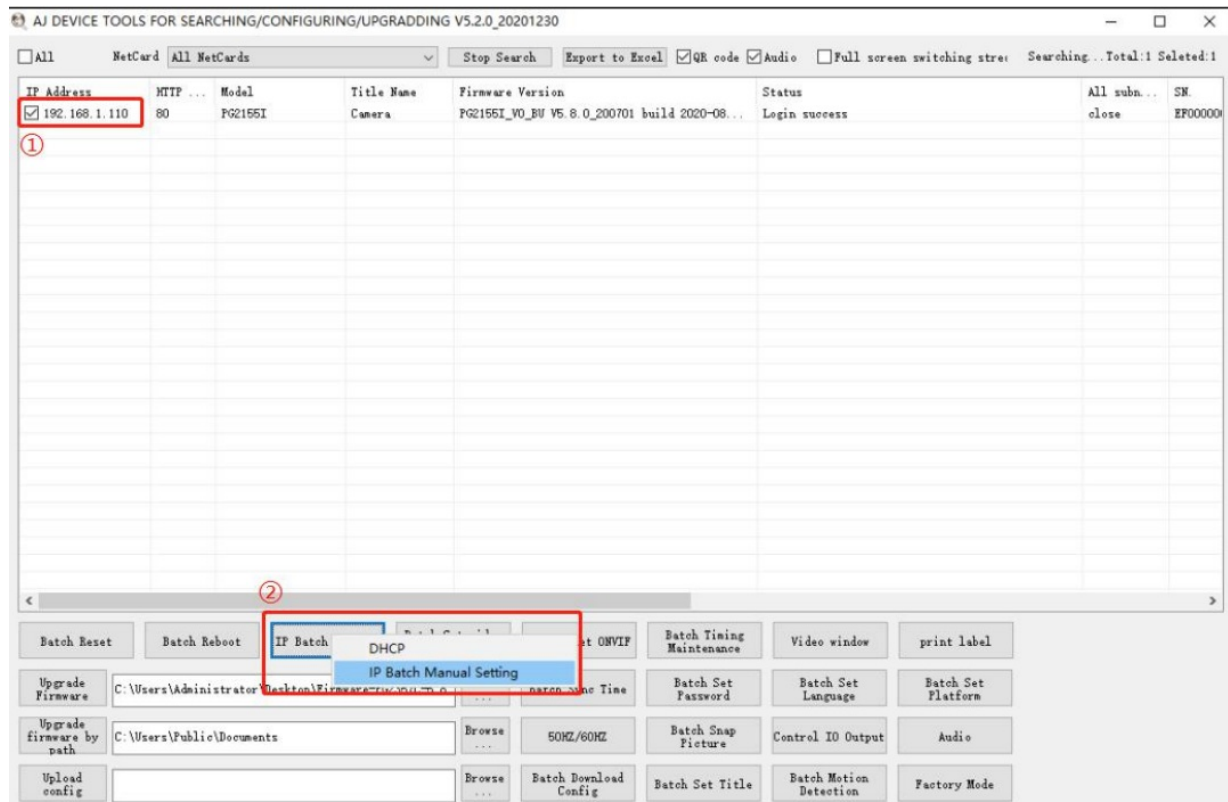


③

4. Modify the IP address of the camera and computer in the same network segment

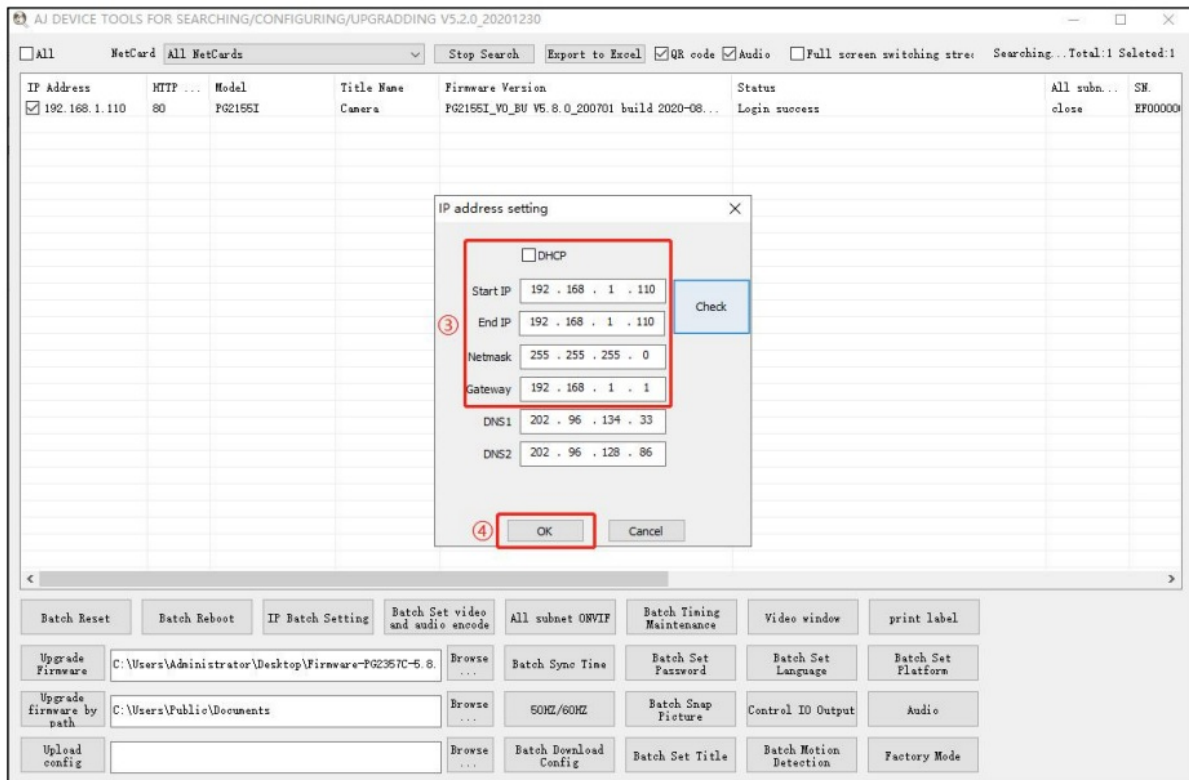
**Setting method:**

1. Select the IP address of the camera
2. Click IP Batch Manual Setting IP address
- 3.

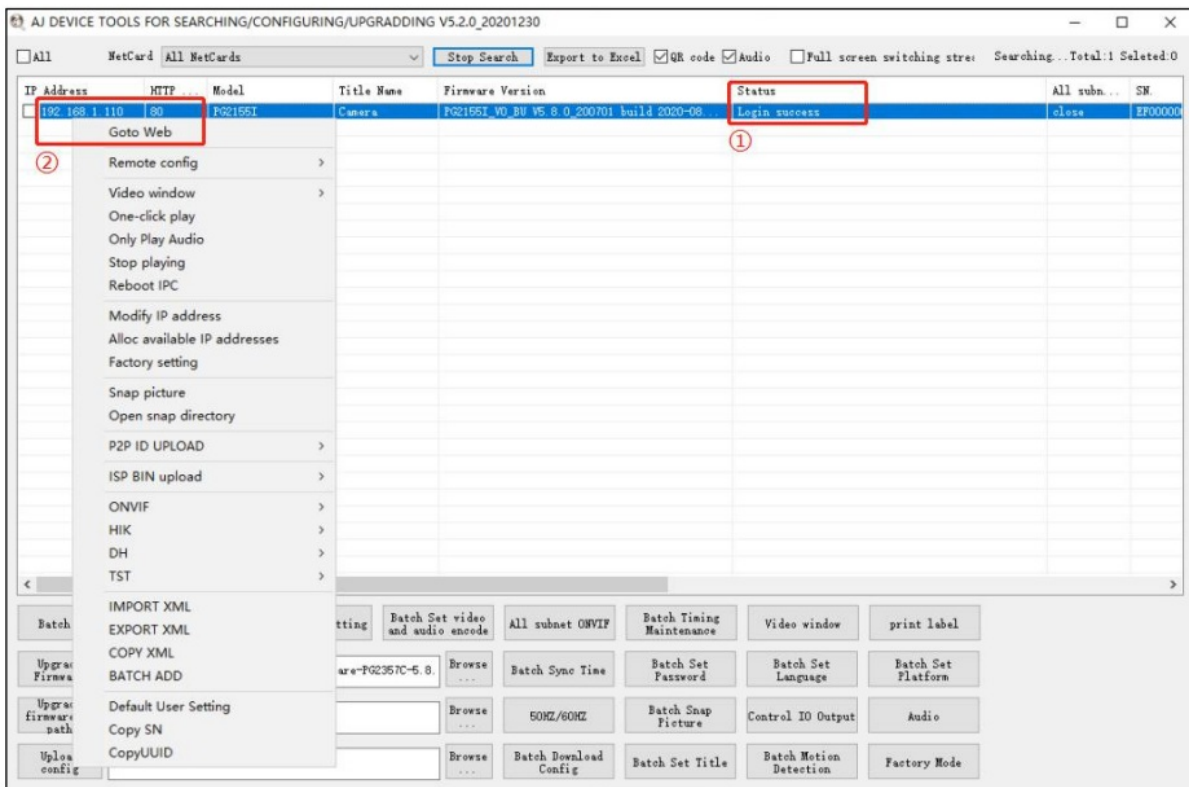


Modify the IP address of the camera to be in the same network segment as the IP address of the computer or choose DHCP to obtain an IP address automatically

4. Select OK—Successfully modified



5. The status shows that the Login success, it can be accessed by the computer Web;

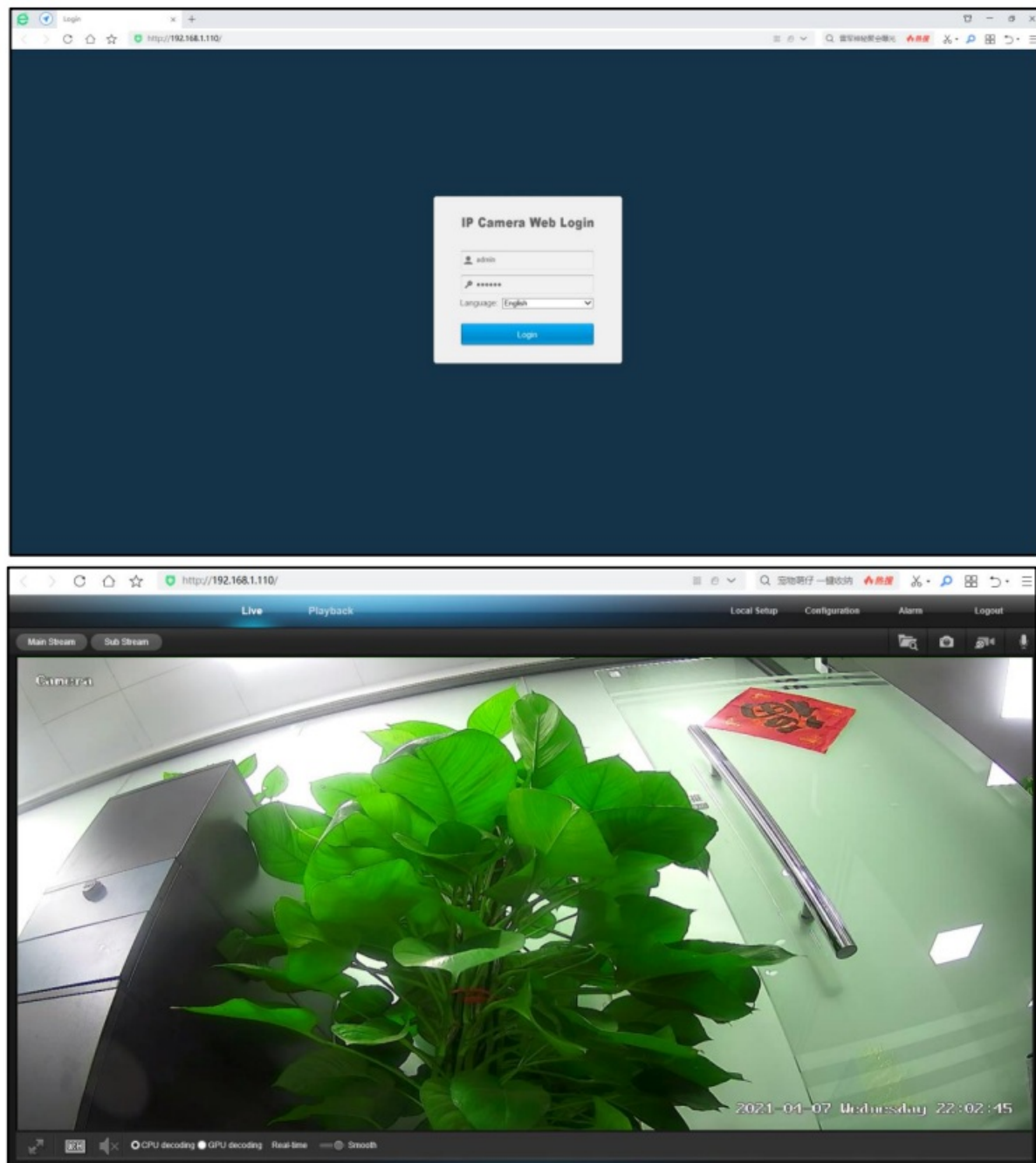


### 3.2 Web login

1. Open the web browser or click Go to web
2. In the browser address bar, input the IP address of the network camera, and press the Enter key to enter the login interface
3. Input the user name and password and click Login.



**Note: The default IP address is 192.168.1.110. Username admin Password123456 First login Click “install Web Plug-in” when prompted. You have to download and run the executable as administrator.**



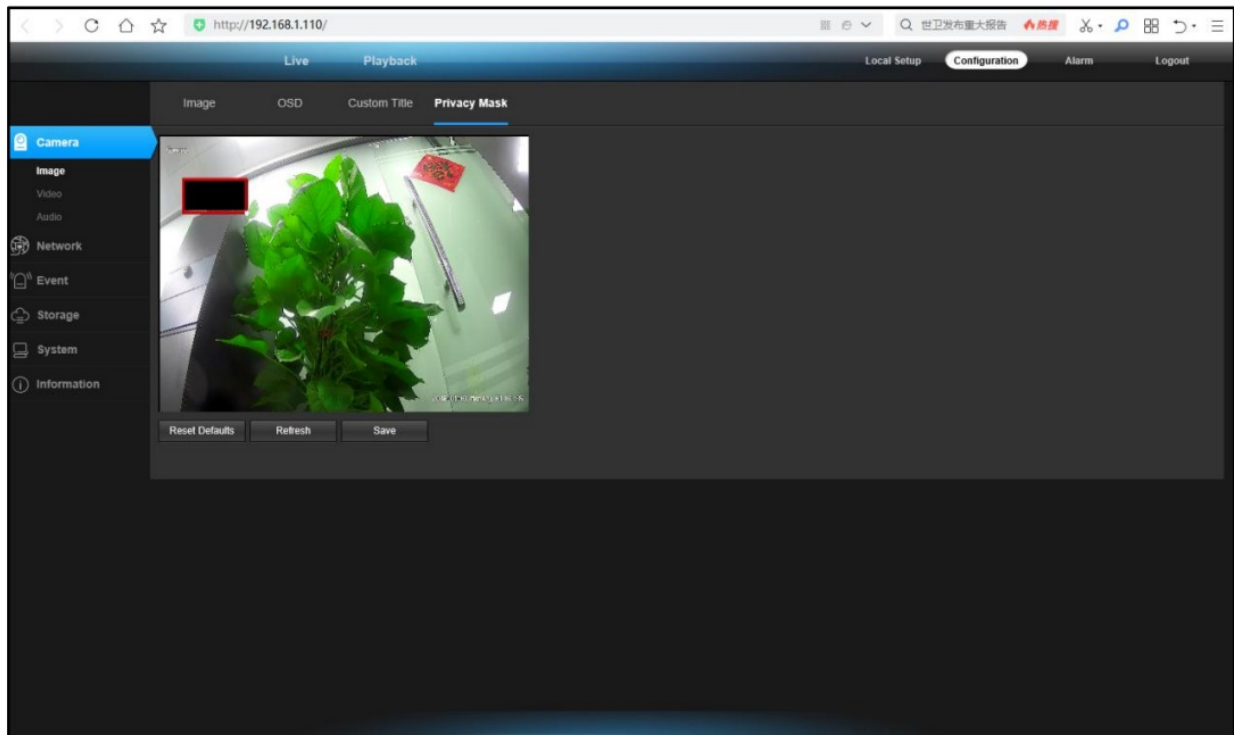
## Chapter 4 Camera General Configurations

### 4.1 Modify the camera “Title name”

Steps: Configuration > Camera > Image > OSD > Title Message.

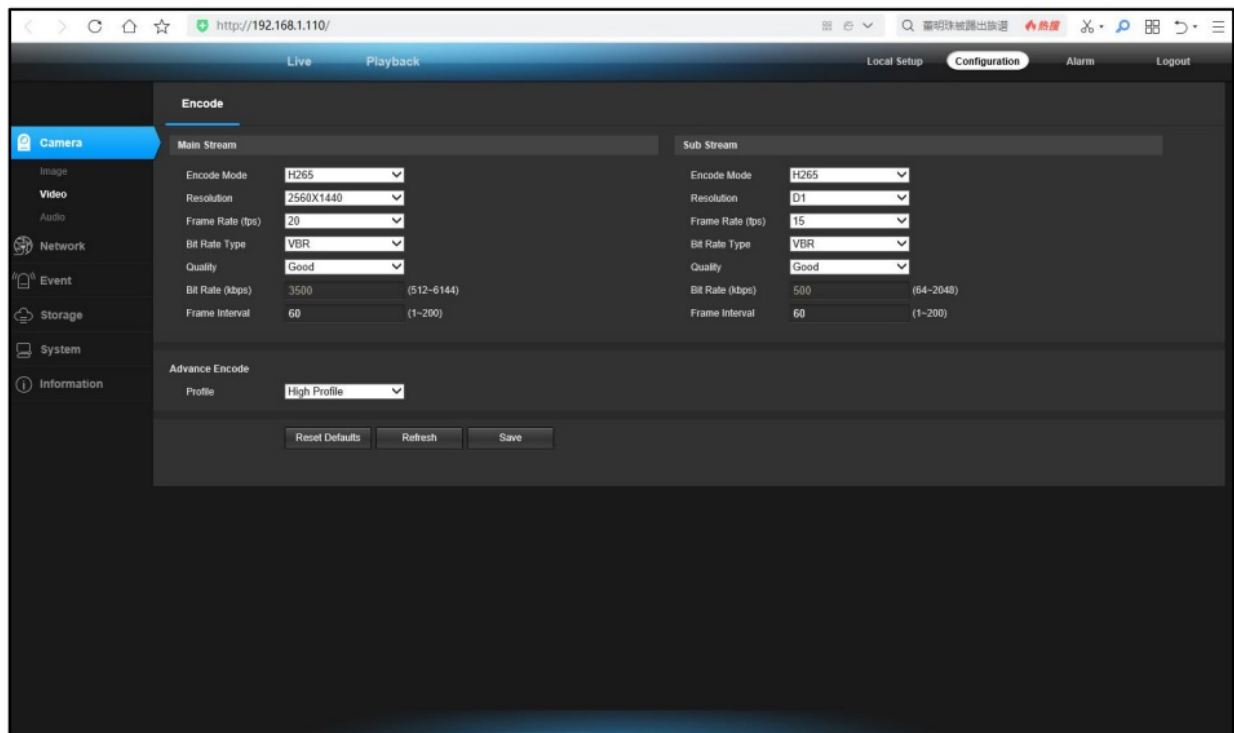
### 4.2 Privacy Mask function settings

Steps: Configuration > Camera > Image > Privacy Mask > Left mouse button > Select the privacy section > Save. (Can choose four Privacy Mask parts.)



### 4.3 Video parameter settings

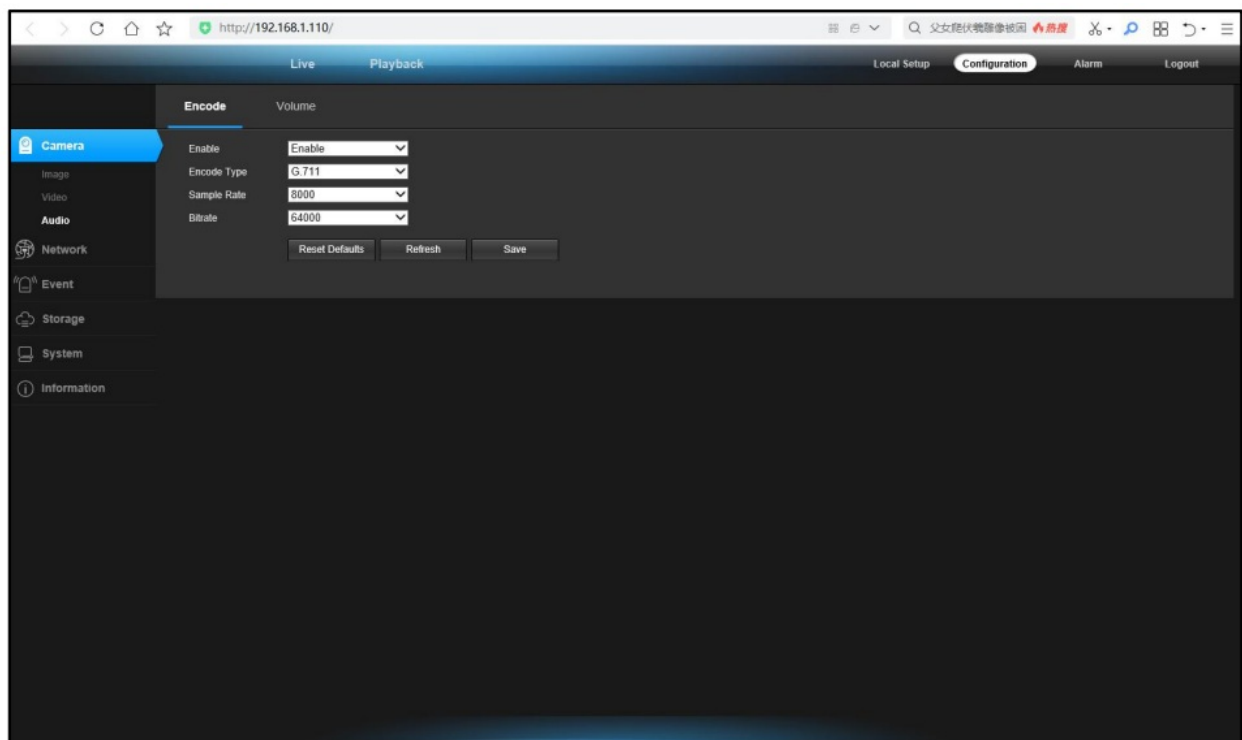
**Steps:** Configuration > Camera > Video > Encode > Main Stream > Sub Stream > Advance Encode > Save.  
**(Can Modify Encode Mode -Resolution-FPS-Video Quality-Bit Rate.)**



### 4.4 Audio settings

**Steps:** Configuration > Camera > Audio > Encode > Volume > Save.

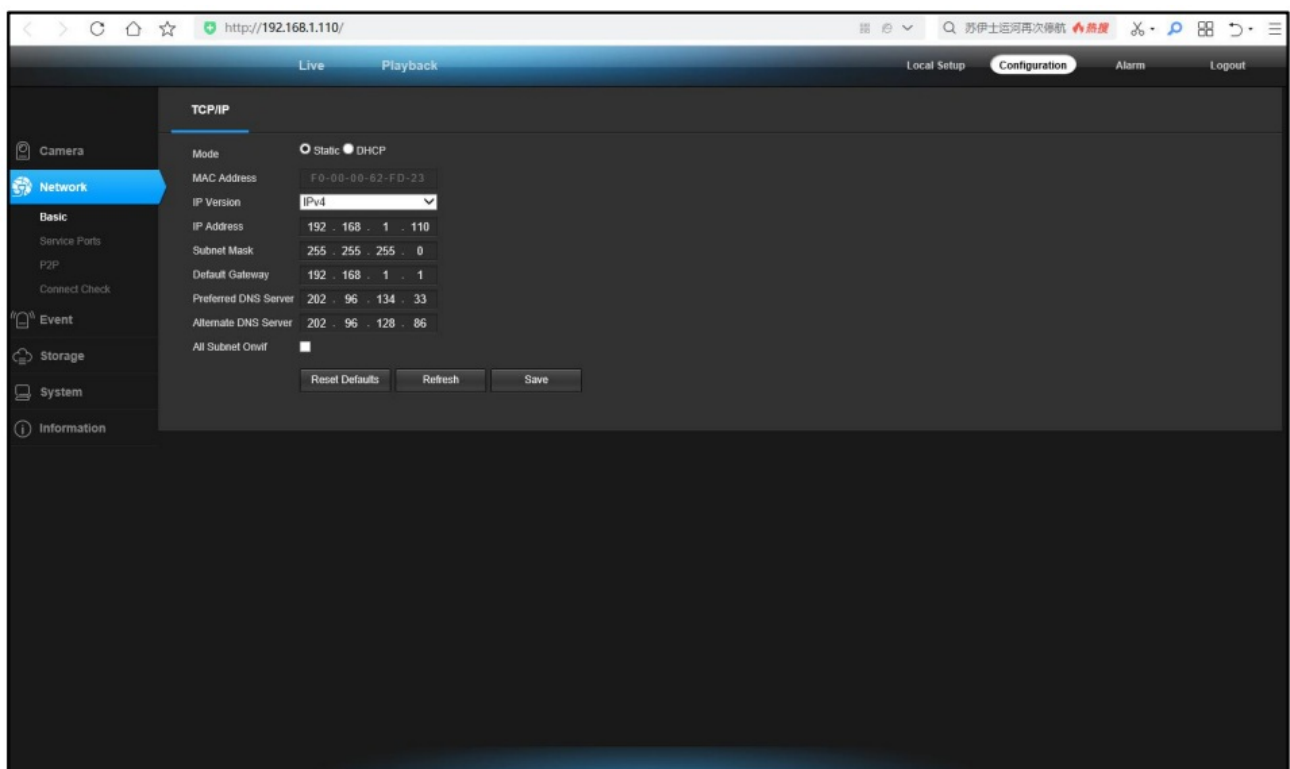




#### 4.5 TCP/IP settings

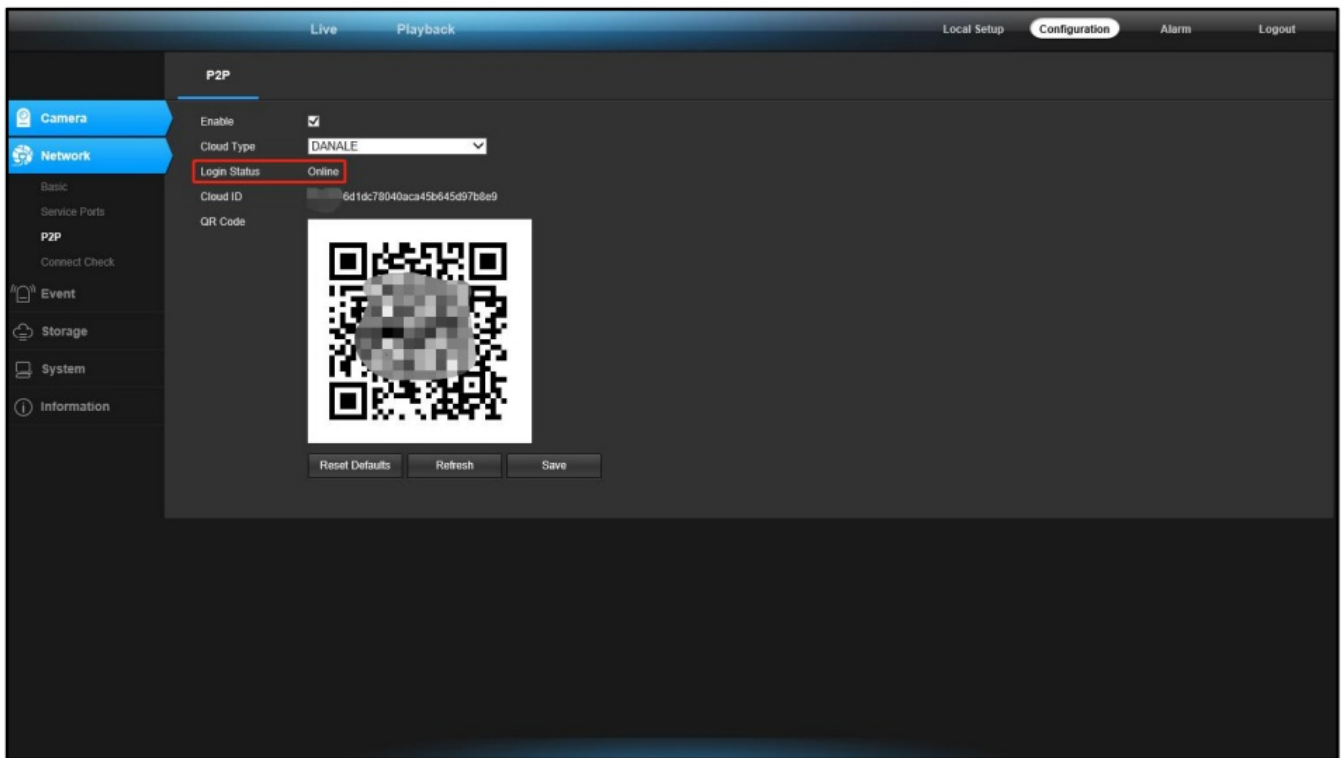
Steps: Configuration > Network > TCP/IP > Save.

(Can manually modify and automatically obtain the IP address.)

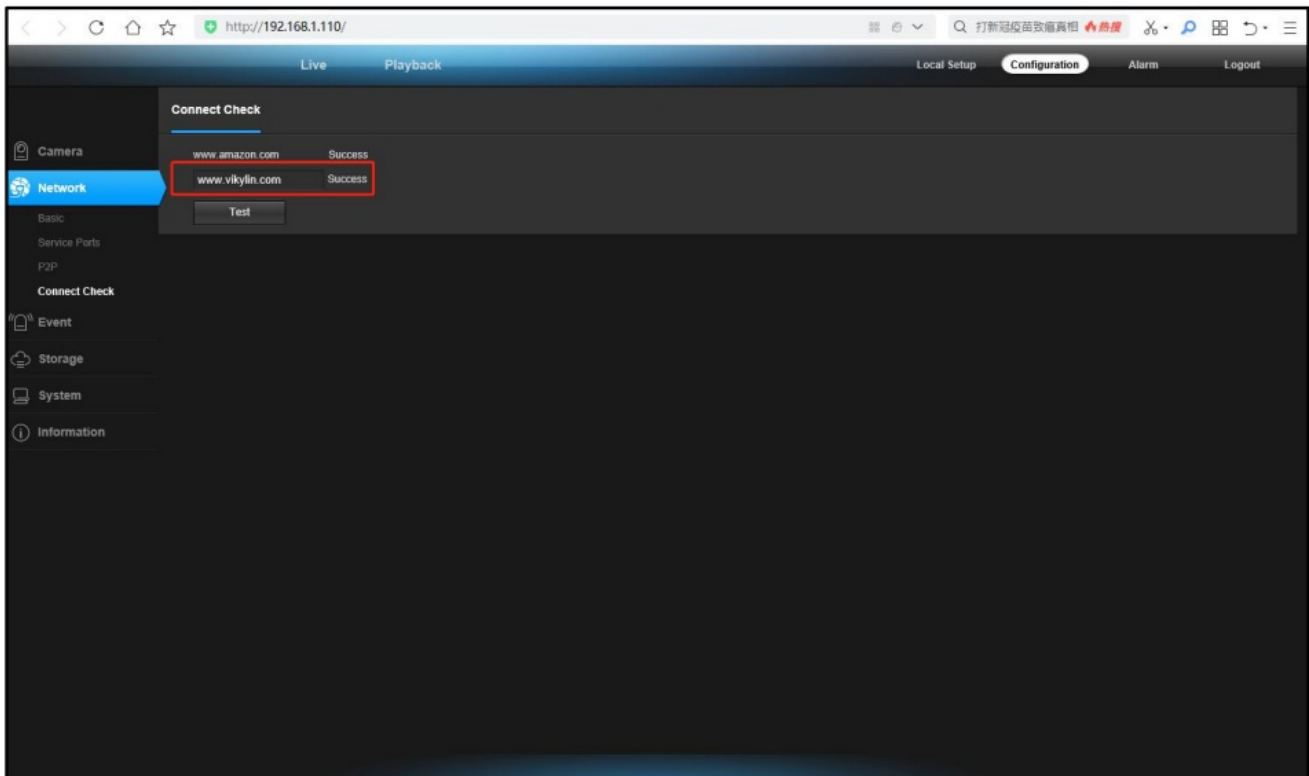


#### 4.6 P2P function settings

Steps: Configuration > Network > P2P > Enable > Save.



#### 4.7 Network Connect Check



Using the P2P ID and QR code, you can access the camera remotely anywhere via smart phone with Internet access.

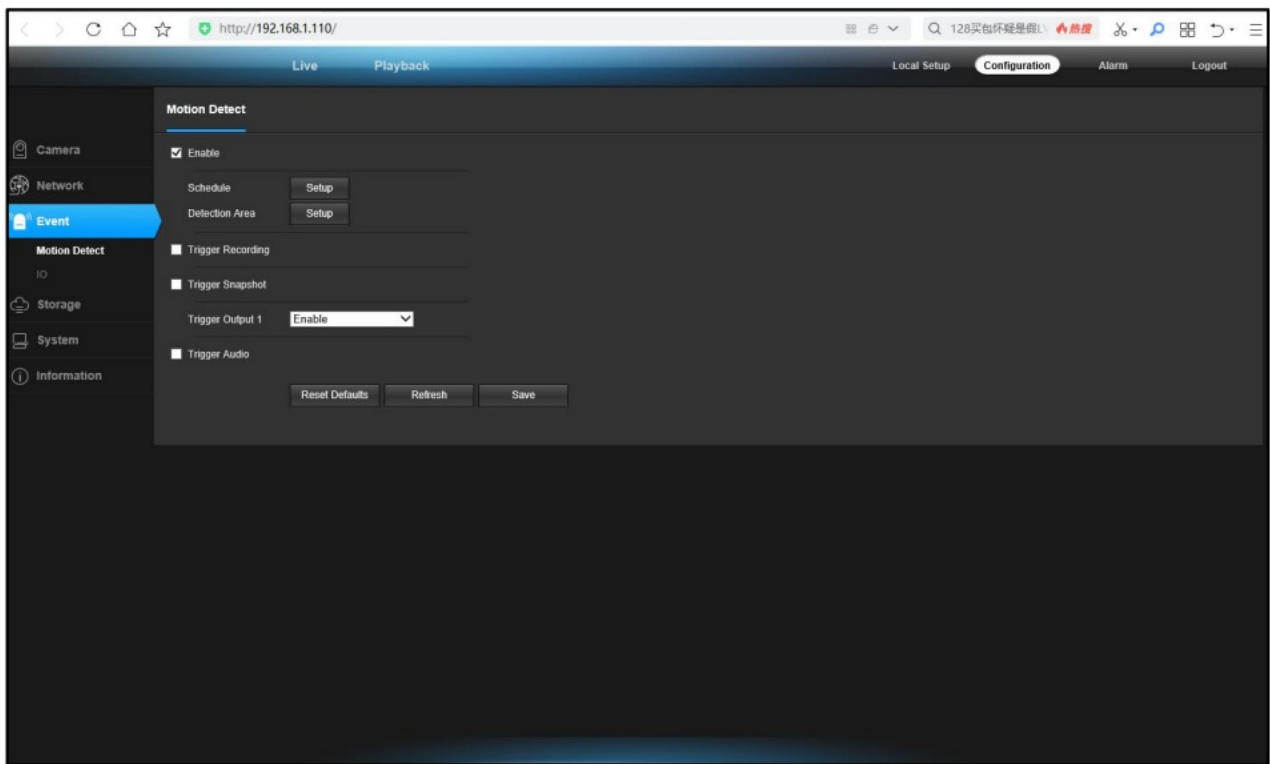
Please register an account via mobile phone after installing the Danale APP from APP Store or Google Play Market, then log in and add your camera to start previewing. Or you can go to the website <http://www.danale.com/> to register if you need PC remote access.

You can download APP from the website to find out more.

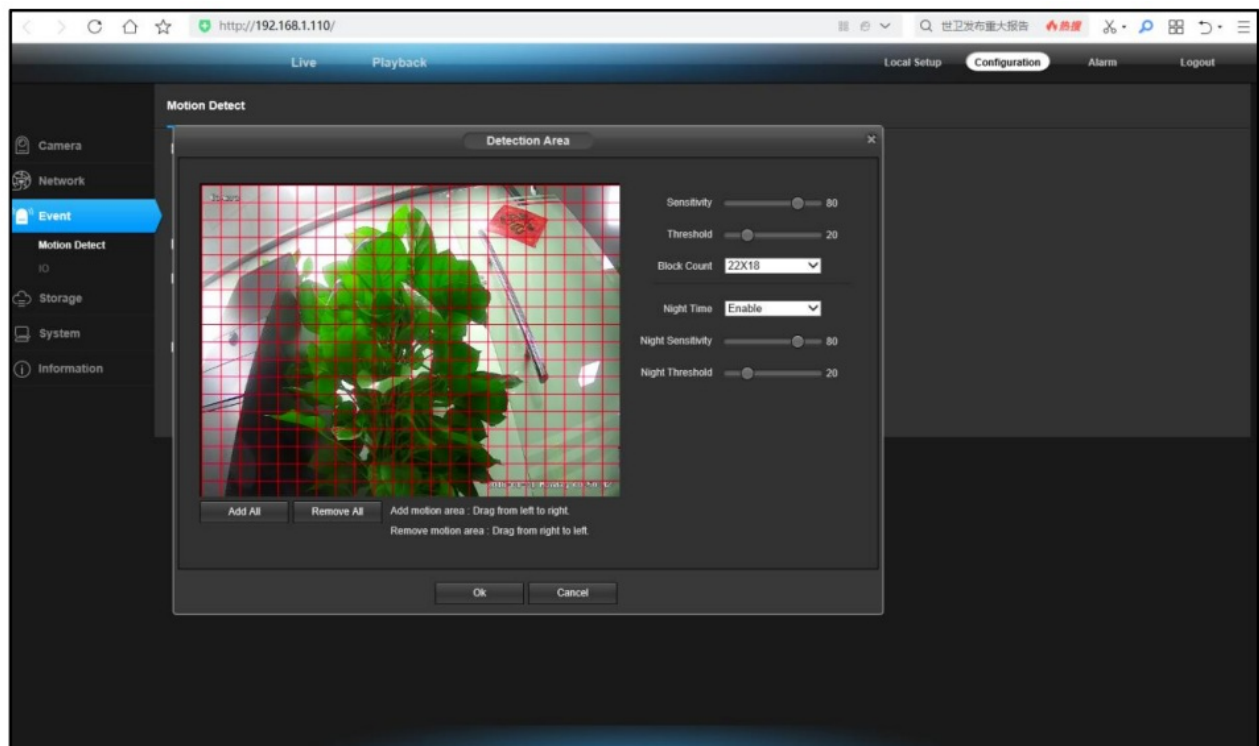
**Note:** If the Login Status shows “offline”, please check your Internet connection and IP camera TCP/IP network configurations. Please make sure that the IP address of the camera can go outside the Internet. Select Connect Check to enter a web address that can access the Internet. The test it can be displayed Success.

#### 4.8 Enable Motion Detection Alarm

Steps: Configuration > Event > Video Detection > Enable > Setup Schedule > Setup Detection Area.



The motion detection area can be set according to the scene–Sensitivity–Threshold –Block Count–Night-Time(Enable)–Night Sensitivity–Night Threshold.



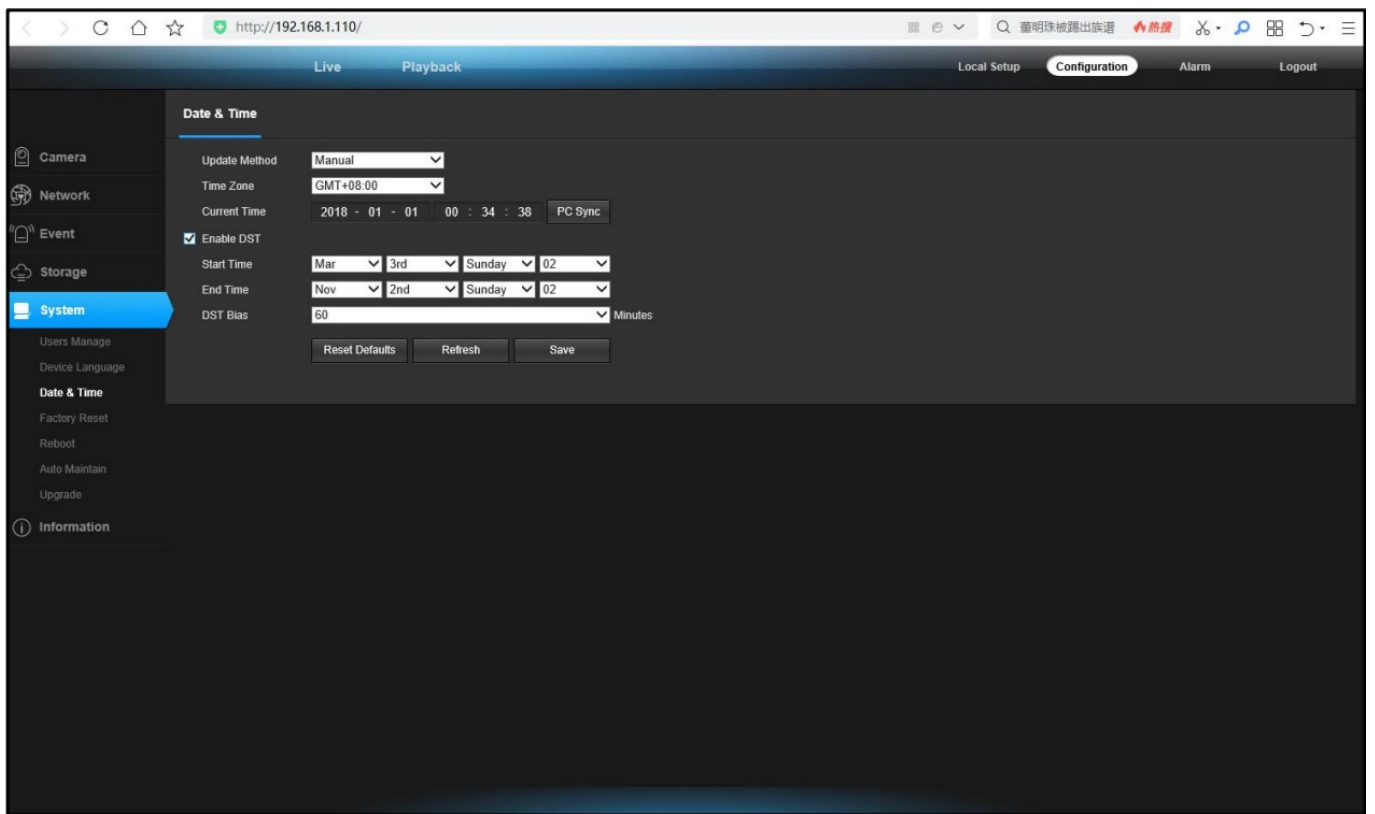
#### 4.9 Modify the camera “Time & Date”

**Steps:** Configuration > System > Time setup.

**There are two time update modes available: Manual and NTP.**

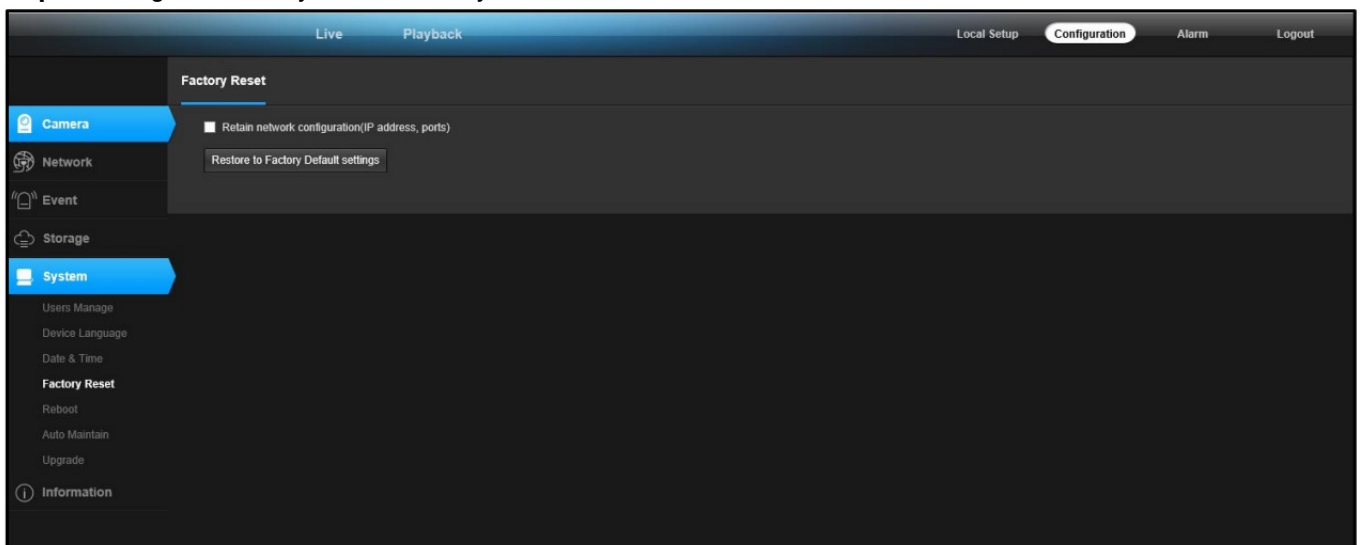
Select your Time Zone, and click PC Sync, click Save, You can also set up the DST (Daylight Savings Time) if necessary. (Time and date will reset to 2018-01-01 if camera was restarted)

If the camera is connected to the Internet, you can set up a NTP server for the camera to sync the time and date automatically.



#### 4.10 Factory Reset

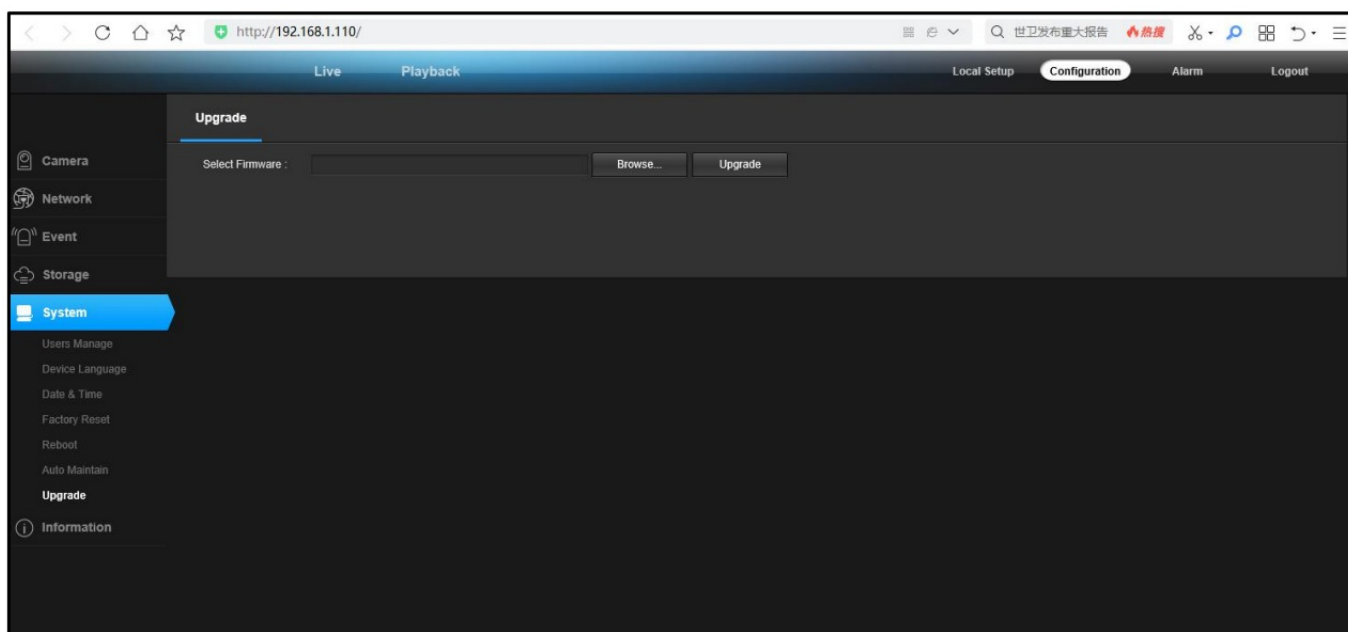
**Steps:** Configuration > System > Factory Reset.



#### 4.11 Version firmware upgrade

**Steps:** Configuration > System > Upgrade > Select Firmware.

**Normal state, it is not recommended to upgrade the firmware, please confirm the version with the technician before upgrading.**



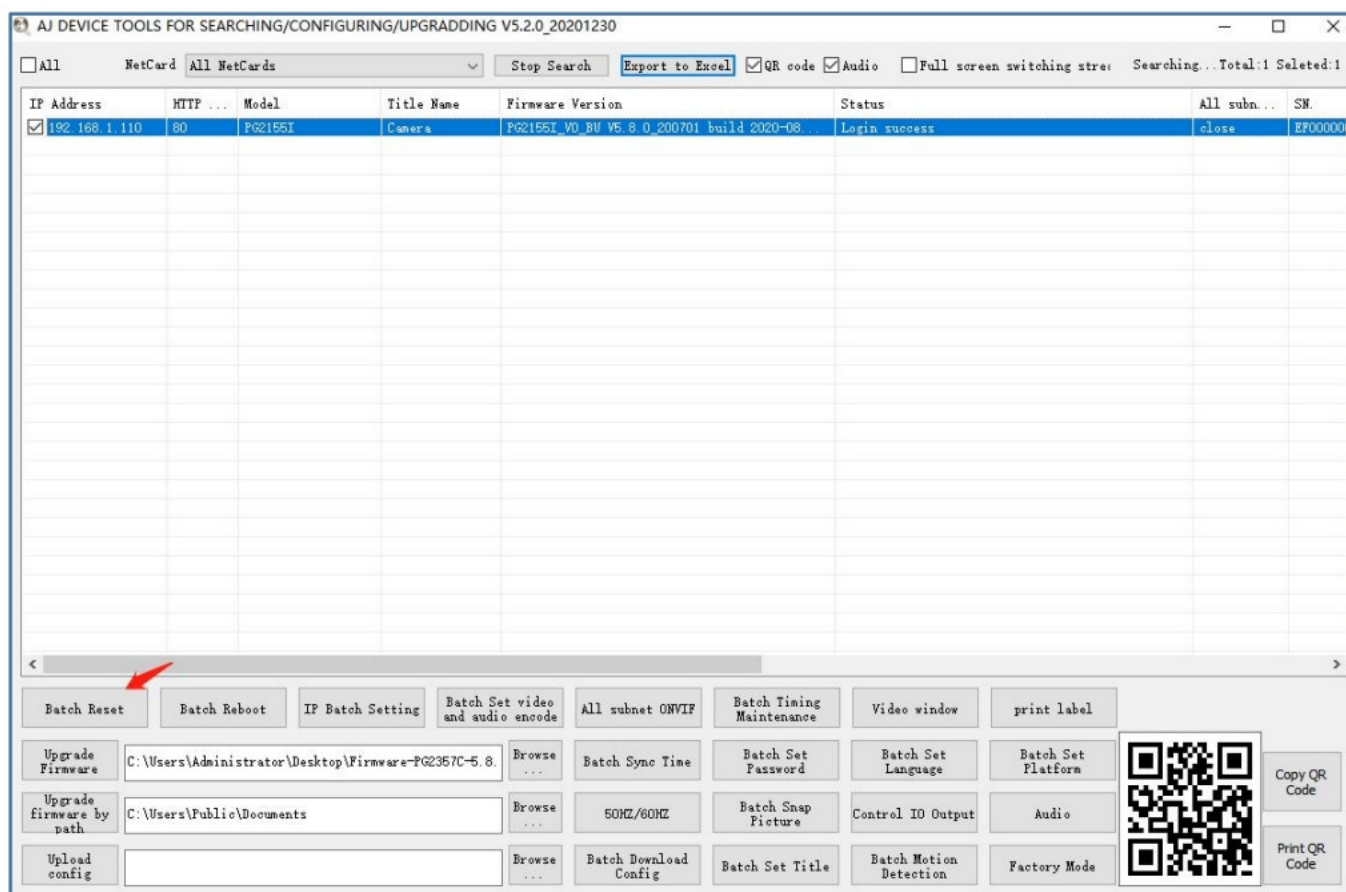
## Chapter 5 Frequently Asked Questions

### Why can't I open the default IP address 192.168.1.110 via web browser ?

The default IP address may not match your LAN's IP scheme. Check your computer's IP address before accessing the camera. If the IP address does not match the 192.168.1.x scheme, please install the IP search tool from the download website to modify the camera's IP address. Make sure the IP address of the camera matches the LAN IP scheme. For example, if the your LAN is 192.168.0.xxx, then set the IP camera to 192.168.0.123 and so on.

### How to reset the password?

The default username: is admin, Password: 123456. If you lost the password or want to reset the camera's setting, please install the search tool to search the camera IP and click Batch Reset button.



### How to upgrade the IP camera ?

Ask the supplier for the suitable firmware. You can use the web browser, search tool, or PC client to upgrade the camera. Go to the Configuration > System > update, click browse and select the firmware, then click Upgrade button and wait for the operation to complete.

### How to fetch the RTSP video stream and http snapshot ?

1. Main Stream: rtsp://IP:554/h264?username=admin&password=123456
2. Sub Stream: rtsp://IP:554/h264cif?username=admin&password=123456
3. Low-resolution snapshot: http://IP/cgi-bin/snapshot.cgi?stream=1
4. HD snapshot: http://IP/cgi-bin/snapshot.cgi?stream=0


### Why does the NVR not show image after adding your IP camera ?

1. Make sure you selected the right protocol and enter the correct username and password when adding the cameras.
2. Make sure the NVR and IP camera are the same IP scheme. (eg. NVR:192.168.1.x, and IP camera:192.168.1.y).
3. Try changing the camera encode mode to H.264 if the NVR can't support **H.265. (Configuration -> Camera -> Video > Encode mode: H.264)**

### How to make the NVR record in motion detection mode ?

1. Enable the IP camera motion detection function via web browser.
2. add the IP camera via ONVIF protocol.
3. change the NVR record mode to Motion Detection mode.
4. check the NVR screen motion detection icon and try playback (Please refer to your NVR's manual for NVR's motion record option.)

## Documents / Resources

	<p><a href="#">HIKVISION PG2387C Network Camera</a> [pdf] User Manual PG2387C Network Camera, PG2387C, Network Camera</p>
---	---

## References

-  [Danale](#)