

HIKVISION K5 Hik Dashcam User Manual

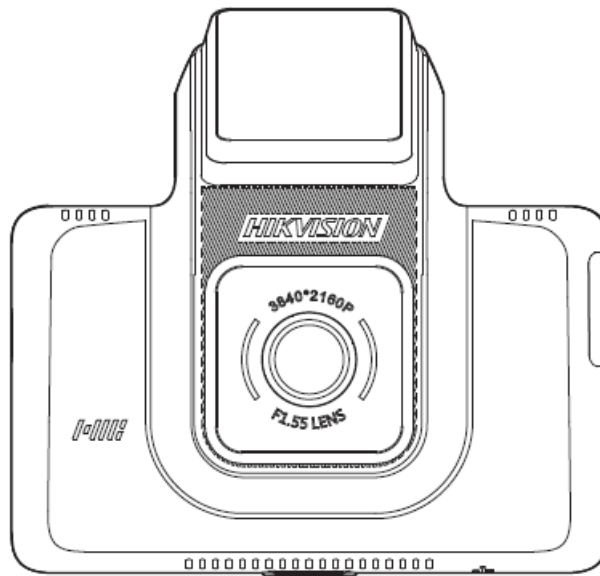
[Home](#) » [Hikvision](#) » HIKVISION K5 Hik Dashcam User Manual 

Contents

- 1 HIKVISION K5 Hik Dashcam
- 2 Legal Statement
- 3 Packing List
- 4 Parts Introduction
- 5 Installation
- 6 Install Camera
- 7 Mobile Phone Connection
- 8 Basic Description
- 9 Specifications
- 10 Safety Instruction
- 11 Troubleshooting
- 12 Regulatory Information
- 13 Documents / Resources
 - 13.1 References
- 14 Related Posts

HIKVISION

HIKVISION K5 Hik Dashcam



Legal Statement

©2021 Hangzhou HikAuto Technology Co., Ltd. All rights reserved.

About this Manual

The Manual includes instructions for using and managing the Product. Pictures, charts, images and all other information hereinafter are for description and explanation only. The information contained in the Manual is subject to change, without notice, due to firmware updates or other reasons.

Trademarks

- and other Hikvision's trademarks and logos are the properties of Hikvision in various jurisdictions.
- Other trademarks and logos mentioned are the properties of their respective owners.

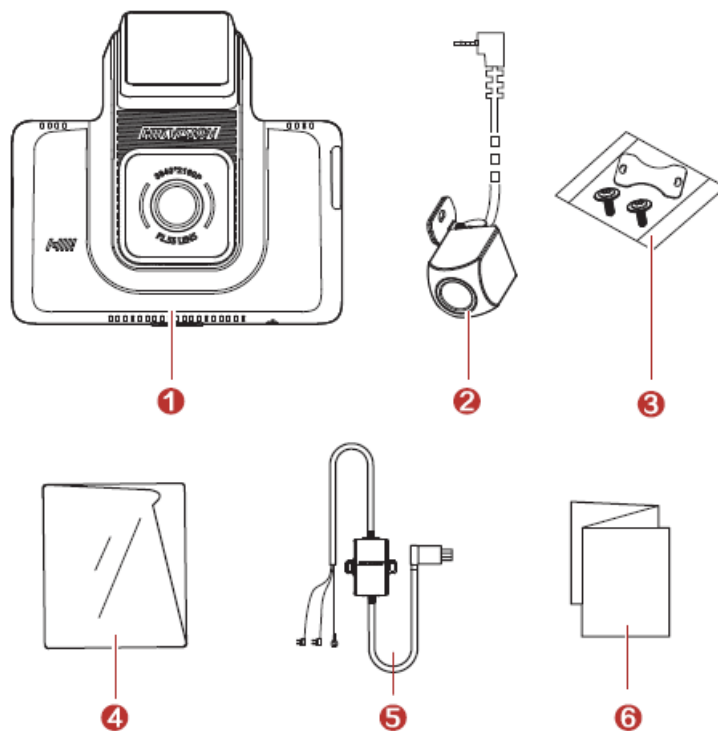
Disclaimer

TO THE MAXIMUM EXTENT PERMITTED BY APPLICABLE LAW, THIS MANUAL AND THE PRODUCT DESCRIBED, WITH ITS HARDWARE, SOFTWARE AND FIRMWARE, ARE PROVIDED "AS IS" AND "WITH ALL FAULTS AND ERRORS". HIKAUTO MAKES NO WARRANTIES, EXPRESS OR IMPLIED, INCLUDING WITHOUT LIMITATION, MERCHANTABILITY, SATISFACTORY QUALITY, OR FITNESS FOR A PARTICULAR PURPOSE. THE USE OF THE PRODUCT BY YOU IS AT YOUR OWN RISK. IN NO EVENT WILL HIKAUTO BE LIABLE TO YOU FOR ANY SPECIAL, CONSEQUENTIAL, INCIDENTAL, OR INDIRECT DAMAGES, INCLUDING, AMONG OTHERS, DAMAGES FOR LOSS OF BUSINESS PROFITS, BUSINESS INTERRUPTION, OR LOSS OF DATA, CORRUPTION OF SYSTEMS, OR LOSS OF DOCUMENTATION, WHETHER BASED ON BREACH OF CONTRACT, TORT (INCLUDING NEGLIGENCE), PRODUCT LIABILITY, OR OTHERWISE, IN CONNECTION WITH THE USE OF THE PRODUCT, EVEN IF HIKAUTO HAS BEEN ADVISED OF THE POSSIBILITY OF SUCH DAMAGES OR LOSS.

YOU ACKNOWLEDGE THAT THE NATURE OF INTERNET PROVIDES FOR INHERENT SECURITY RISKS, AND HIKAUTO SHALL NOT TAKE ANY RESPONSIBILITIES FOR ABNORMAL OPERATION, PRIVACY LEAKAGE OR OTHER DAMAGES RESULTING FROM CYBER-ATTACK, HACKER ATTACK, VIRUS INFECTION, OR OTHER INTERNET SECURITY RISKS; HOWEVER, HIKAUTO WILL PROVIDE TIMELY TECHNICAL SUPPORT IF REQUIRED. YOU AGREE TO USE THIS PRODUCT IN COMPLIANCE WITH ALL APPLICABLE LAWS, AND YOU ARE SOLELY RESPONSIBLE FOR ENSURING THAT YOUR USE CONFORMS TO THE APPLICABLE LAW. ESPECIALLY, YOU ARE RESPONSIBLE, FOR USING THIS PRODUCT IN A MANNER THAT DOES NOT INFRINGE ON THE RIGHTS OF THIRD PARTIES, INCLUDING WITHOUT LIMITATION, RIGHTS OF PUBLICITY, INTELLECTUAL PROPERTY RIGHTS, OR DATA PROTECTION AND OTHER PRIVACY RIGHTS. YOU SHALL NOT USE THIS PRODUCT FOR ANY PROHIBITED END-USES, INCLUDING THE DEVELOPMENT

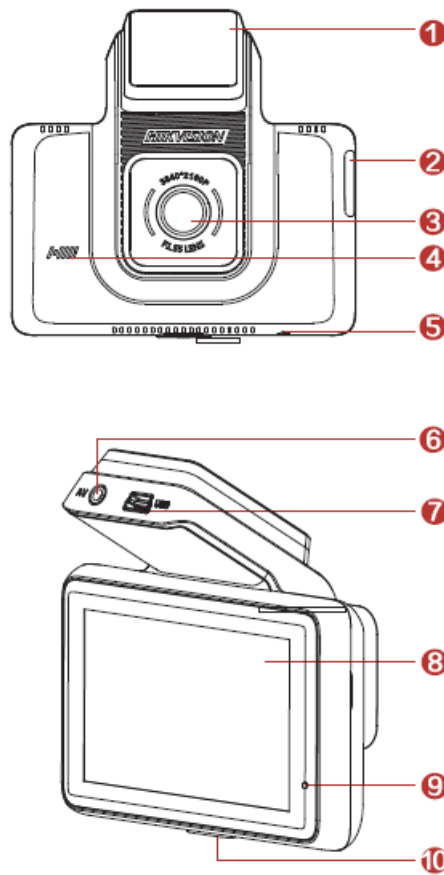
OR PRODUCTION OF WEAPONS OF MASS DESTRUCTION, THE DEVELOPMENT OR PRODUCTION OF CHEMICAL OR BIOLOGICAL WEAPONS, ANY ACTIVITIES IN THE CONTEXT RELATED TO ANY NUCLEAR EXPLOSIVE OR UNSAFE NUCLEAR FUEL-CYCLE, OR IN SUPPORT OF HUMAN RIGHTS ABUSES. IN THE EVENT OF ANY CONFLICTS BETWEEN THIS MANUAL AND THE APPLICABLE LAW, THE LATER PREVAILS.

Packing List



1. Dashcam × 1
2. Camera × 1
3. Accessory Package × 1
4. Electrostatic Film × 1
5. Power Cord × 1
6. User Manual ×

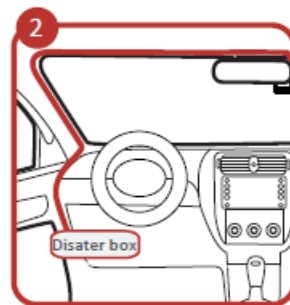
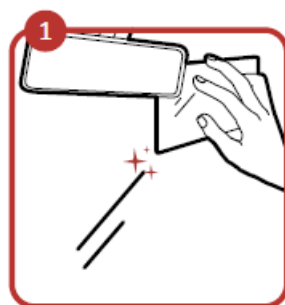
Parts Introduction



1. 3M Tape
2. TF Card Slot
3. Lens
4. Loudspeaker
5. Microphone
6. Interface
7. Power Supply Interface
8. Touch Screen
9. Indicator
10. power Button

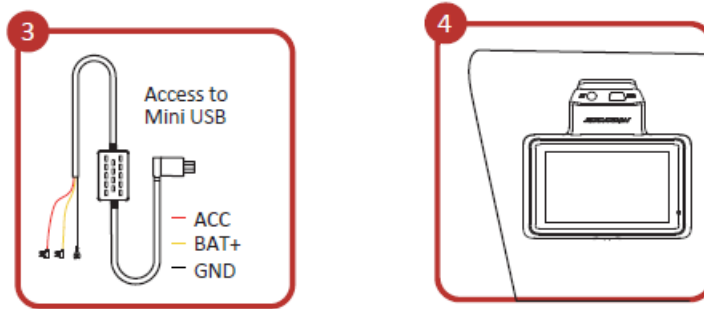
Installation

1. Clean the windshield and paste the electrostatic film onto it. Avoid introducing air bubble. DO NOT paste the film repeatedly
2. Paste the device onto the electrostatic film and route cable to the disater box for power supply.



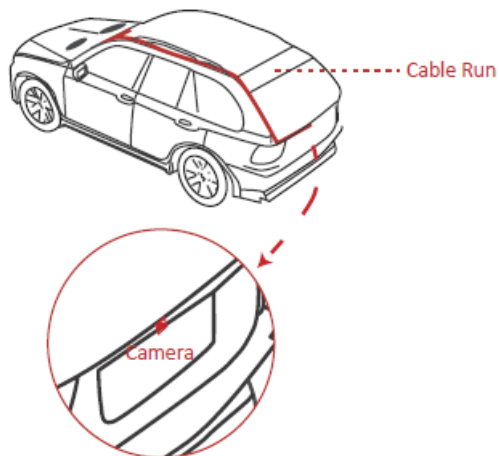
3. Connect the power cord as the figure above

4. Adjust the angle to the target direction

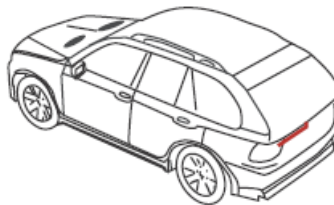


Install Camera

1. Peel off the adhesive release paper on the camera bracket. Install camera on the appropriate location near the license plate.
2. Connect the camera to the dashcam according to the following cable run.



3. Connect the red reversing line of the camera to the reverse light power line of the car.



Mobile Phone Connection

1. Scan the QR code to download and install HikDashcam app.



2. Add the dashcam to the app.
 1. Run the HikDashcam app.
 2. Tap Wi-Fi Connection.
 3. In Wi-Fi list, select the Wi-Fi SSID of the target dashcam and enter Wi-Fi password to build connection.
3. Edit the dashcam password to activate it to avoid abnormal recording after connecting to Wi-Fi.

Basic Description

Start Up

Connect the power cord to the car battery.

Start Up/Shut Down Manually

Hold the power button for 3 s to shut down the device. Press the power button to start up the device.

Recording

Recordings are divided to ordinary video and emergency video. You can set the video voice on/off via System Settings or Hikdashcam APP.

Upgrade

1. Step1: Power on the device and connect it to Wi-Fi.
2. Step2: Run the Hikdashcam APP, add the device to download upgrading package.
3. Step3: Upgrade the device.

Specifications

Model	AE-DC4328-K5
Aperture	F1.55
Pixel	2560 * 1440 P
Max. Resolution	Front(without camera): 2160 P@30 fps Front(with camera):1440 P@30 fps, Rear: 1080 P@25 fps
Angle	Horizontal: 105°, Diagonal: 123.4°, Verizontal: 56.4°
Screen	3"
Storage	TF card, 16 GB to 128 GB
G-Sensor	Built-in, collision triggered recording and recording lock
Wi-Fi	Yes
Sound Recording	Yes
Power Supply	5 VDC, 2 A
Power Consumption	Approx. 5 W
Operating Temperature and Humidity	-20 °C to 70 °C (-4° F to 158° F). Humidity 95% or less.
Installation Type	General
Dimensions (L × W × H)	89 × 42 × 80 mm (3.5" × 1.7" × 3.2")
Weight	Approx. 110 g (0.24 lb.)

Safety Instruction

These instructions are intended to ensure that users can use the product correctly to avoid danger or property loss.

Cautions: Injury or equipment damage may occur if any of the cautions are neglected.

- In the use of the dashcam, you must be in strict compliance with the local laws and regulations.
- You are recommended to install the dashcam on the location of rear mirror to ensure the dashcam can record with the best surveillance view. DO NOT install the dashcam on the location that will block the driver's sight.
- Keep the user manual properly for future reference. See initial connection of dashcam in user manual.
- Purchase the TF card from legal channel. To ensure safe and stable data transmission, it is recommended to use TF card of Class 10 or above.
- Format the new TF card first before using the card.
- To protect TF card from damage, shut down the dashcam before installing and uninstalling TF card.
- If the dashcam is directly connected with the vehicle power system, you are recommended to power off the dashcam when the engine is off. Disconnect cigarette lighter to avoid insufficient voltage and abnormal startup. Reconnect cigarette lighter to ensure dashcam work normally when you start the car again.
- Operating temperature is from -20°C to 70°C (-4°F to 158°F). To protect the dashcam, DO NOT use it in high temperature, low temperature, or high-humidity environment. Keep the dashcam from rain and dust.

- The manual is subject to update. The functions of dashcam may vary according to different models.
- The driving assistance function of the device only sends alarm or warning to the driver and cannot replace the driver's judgement and operation. With the device, you also should drive carefully to avoid traffic accident or violation. Pedestrian or object recognition failure or recognition error may occur due to external factors. DO NOT overly rely on the driving assistance function.

Troubleshooting

Trouble	Solution
The dashcam drops easily.	<ul style="list-style-type: none"> • Clean the windshield before installation. • Check whether the 3M tape is tightly stucked to the electrostatic film before the installation.
Starting the dashcam failed.	<ul style="list-style-type: none"> • Check whether the vehicle is started and power supply is normal. • Check whether the car charger is tightly connected. • Restore to defaults: hold the RESET button until the startup music is heard.
The dashcam powers off easily.	<ul style="list-style-type: none"> • Make sure the power cord is in good condition. • Make sure the power cord is tightly connected to the according interfaces.
Recording is abnormal and indicator is unlit.	<ul style="list-style-type: none"> • Make sure that the dashcam started up successfully. • Check whether the TF card is inserted. • Check the status of TF card, e.g. its format, its lifespan. • Change TF card if it is not well.
Recording is blurred.	<ul style="list-style-type: none"> • Make sure the protective film is peeled off. • Check whether the windshield or the lens of dashcam is blurred.
Recording is mute.	<ul style="list-style-type: none"> • Set audio settings on the device or turn on sound recording in HikDashcam app. • Turn on sound through the the audio control function of the dashcam.
Dashcam reboots itself.	<ul style="list-style-type: none"> • Check whether the car charger is tightly connected. • Check whether the car charger is equipped with power supply interface of 5 VDC, ≥ 2 A.
Mobile phone cannot connect to dashcam.	<ul style="list-style-type: none"> • Make sure HikDashcam app is installed. • Please restart the dashcam to the app.

Regulatory Information

FCC Information

Please take attention that changes or modification not expressly approved by the party responsible for compliance could void the user's authority to operate the equipment.

FCC compliance:

This equipment has been tested and found to comply with the limits for a Class B digital device, pursuant to part 15 of the FCC Rules. These limits are designed to provide reasonable protection against harmful interference when the equipment is operated in a residential environment. This equipment generates, uses and can radiate radio frequency energy and, if not installed and used in accordance with the instructions, may cause harmful interference to radio communications. However, there is no guarantee that interference will not occur in a particular installation. If this equipment does cause harmful interference to radio or television reception, which can be determined by turning the equipment off and on, the user is encouraged to try to correct the interference by one or more of the following measures:

- Reorient or relocate the receiving antenna.
- Increase the separation between the equipment and receiver.
- Connect the equipment into an outlet on a circuit different from that to which the receiver is connected.
- Consult the dealer or an experienced radio/TV technician for help FCC Conditions

This device complies with part 15 of the FCC Rules. Operation is subject

Documents / Resources

	HIKVISION K5 Hik Dashcam [pdf] User Manual AEK5, 2ADTD-AEK5, 2ADTDAEK5, K5 Hik Dashcam, K5, Hik Dashcam
---	--

References

-  [HOME](#)