



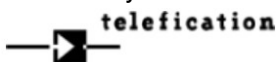
# HIKVISION DS-PS1-E-WA Wireless External Sounder User Guide

[Home](#) » [Hikvision](#) » HIKVISION DS-PS1-E-WA Wireless External Sounder User Guide 



## DS-PS1-E-WA Wireless External Sounder Quick Start Guide

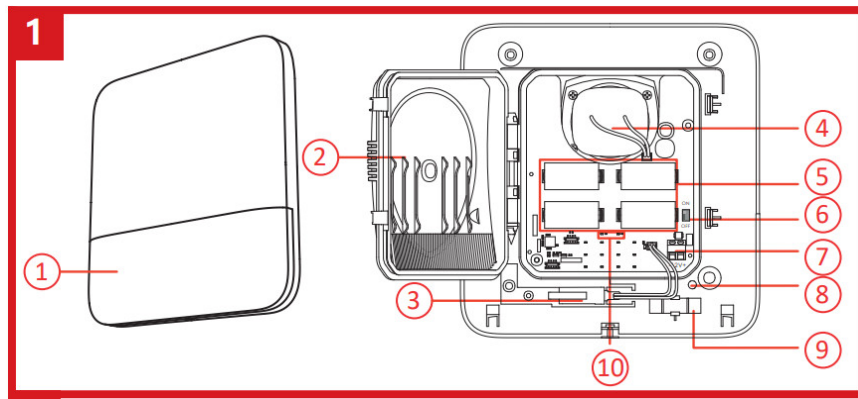
EN 50131-1:2006+A2:2017  
EN 50131-4:2019  
EN 50131-6:2017  
EN 50131-5-3:2017  
Security Grade(SG) 2  
Environmental Class(EC) IV  
Certified by Telefication



### Contents

- [1 Appearance](#)
- [2 Power On](#)
- [3 Enrollment](#)
- [4 Installation](#)
- [5 Specification](#)
- [6 Documents / Resources](#)
- [7 Related Posts](#)

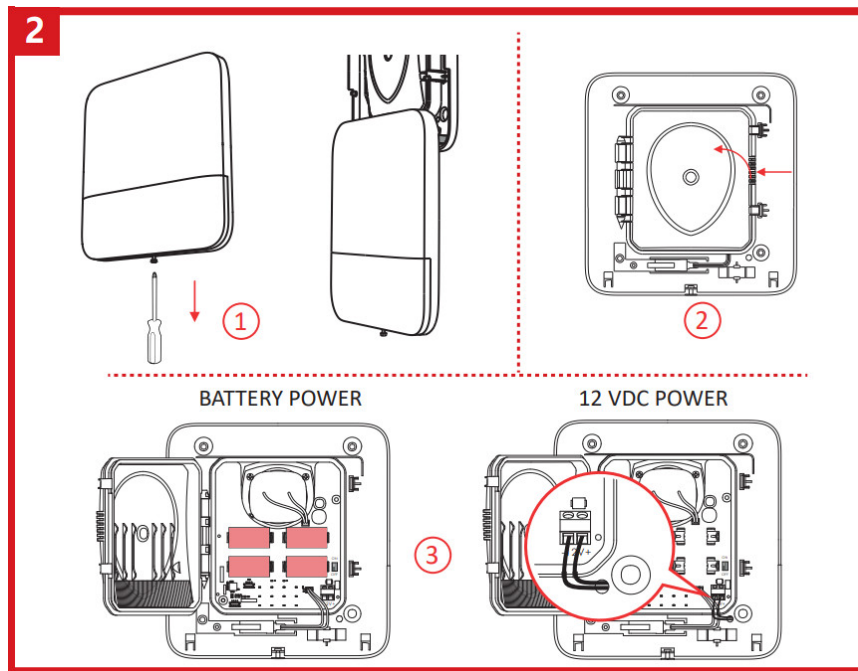
## Appearance



1. Strobe Light
2. Water-Proof Transparency Cover
3. Tamper Switch
4. Buzzer
5. Battery Connector

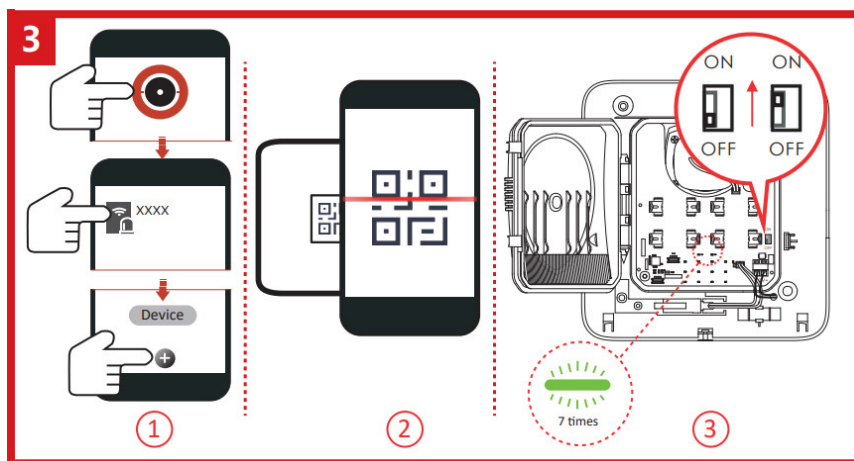
6. Power Switch
7. 12 VDC Power Terminal
8. Power Cable Knock Out
9. Gradienter
10. Indicator

## Power On

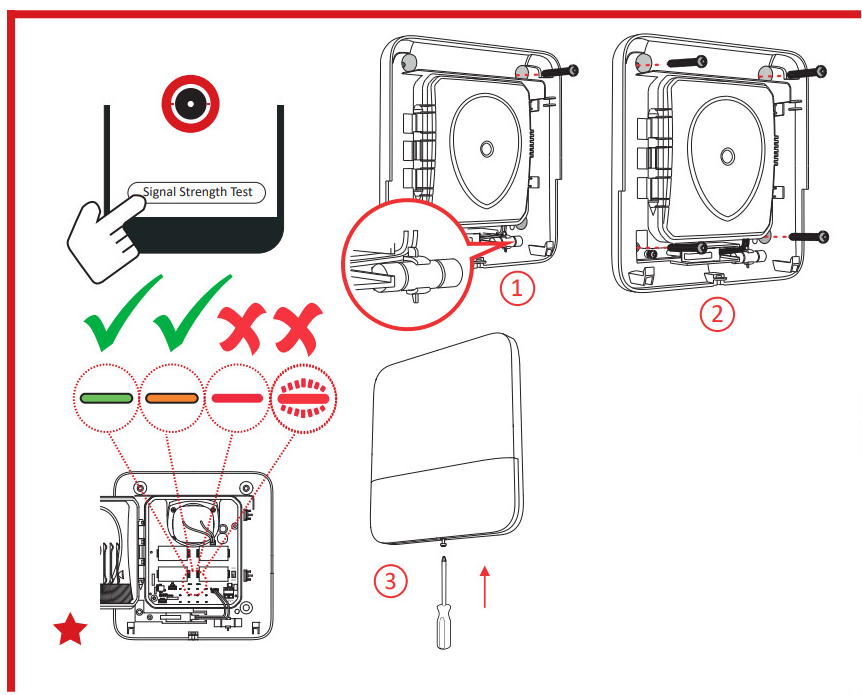


**Battery Power**  
**12 VDC Power**

## Enrollment



## Installation



★ Check signal strength.

**Note:** for 12 VDC power supplies, route the cables before installation.

## User Manual

Scan the QR code for more information and operation help.



<http://enpinfodata.hikvision.com/analysisQR/showQR/70d5db47>

## Specification

<b>RF</b>	Frequency	915 MHz
	Method	Two-way communication
	Distance	1.6KM
<b>Indication</b>	Indicator	Red/Green
	Strobe light	Red/Blue (white on the board)
<b>Power</b>	Power	Battery (default power supply method) or 12 VDC
	Consumption	Quiescent Current: 40uA Battery: Max. 3 V/4A (alerts in volume level 3 ) 12 VDC: Max. 12 V/1.3A (alerts in volume level 3 )
	Low Battery Cut Off	2.45 V
	Voltage Range	Fully charged (new) to 2.45V DC (battery)
	Battery life span	4 CR123A, 3 years in work status(triggered every two weeks and alerting 90 s for each triggering)
<b>Interface</b>	Power switch	Power switch
	Tamper switch	Front and rear tamper-proof
<b>Buzzer</b>	Piezo Decibel	102 db
	Max. Sound Duration	15min (900s)
<b>General</b>	Operation Temperature	-25 °C to 60 °C (-13 °F to 140 °F)
	Operation Humidity	10% to 90%
	Material	PC+ABS
	Dimension (W x H x D)	190 x 200 x 47.3mm (7.48" x7.87" x 1.86")
	Weight	606.5g
	Protection Level	IP65
	Installation	Wall mounting

©2020 Hangzhou Hikvision Digital Technology Co., Ltd. All rights reserved.

#### About this Manual

The Manual includes instructions for using and managing the Product. Pictures, charts, images, and all other information hereinafter are for description and explanation only.

The information contained in the Manual is subject to change, without notice, due to firmware updates or other reasons. Please find the latest version of this Manual at the Hikvision website (<https://www.hikvision.com/>).

Please use this Manual with the guidance and assistance of professionals trained in supporting the Product.

**HIKVISION** and other Hikvision trademarks and logos are the properties of Hikvision in various jurisdictions. Other trademarks and logos mentioned are the properties of

their respective owners.



### Disclaimer

TO THE MAXIMUM EXTENT PERMITTED BY APPLICABLE LAW, THIS MANUAL AND THE PRODUCT DESCRIBED, WITH ITS HARDWARE, SOFTWARE, AND FIRMWARE, ARE PROVIDED “AS IS” AND “WITH ALL FAULTS AND ERRORS”. HIKVISION MAKES NO WARRANTIES, EXPRESS OR IMPLIED, INCLUDING WITHOUT LIMITATION, MERCHANTABILITY, SATISFACTORY QUALITY, OR FITNESS FOR A PARTICULAR PURPOSE. THE USE OF THE PRODUCT BY YOU IS AT YOUR OWN RISK. IN NO EVENT WILL HIKVISION BE LIABLE TO YOU FOR ANY SPECIAL, CONSEQUENTIAL, INCIDENTAL, OR INDIRECT DAMAGES, INCLUDING, AMONG OTHERS, DAMAGES FOR LOSS OF BUSINESS PROFITS, BUSINESS INTERRUPTION, OR LOSS OF DATA, CORRUPTION OF SYSTEMS, OR LOSS OF DOCUMENTATION, WHETHER BASED ON BREACH OF CONTRACT, TORT (INCLUDING NEGLIGENCE), PRODUCT LIABILITY, OR OTHERWISE, IN CONNECTION WITH THE USE OF THE PRODUCT, EVEN IF HIKVISION HAS BEEN ADVISED OF THE POSSIBILITY OF SUCH DAMAGES OR LOSS.


YOU ACKNOWLEDGE THAT THE NATURE OF THE INTERNET PROVIDES FOR INHERENT SECURITY RISKS, AND HIKVISION SHALL NOT TAKE ANY RESPONSIBILITIES FOR ABNORMAL OPERATION, PRIVACY LEAKAGE, OR OTHER DAMAGES RESULTING FROM CYBER-ATTACK, HACKER ATTACK, VIRUS INFECTION, OR OTHER INTERNET SECURITY RISKS; HOWEVER, HIKVISION WILL PROVIDE TIMELY TECHNICAL SUPPORT IF REQUIRED.

YOU AGREE TO USE THIS PRODUCT IN COMPLIANCE WITH ALL APPLICABLE LAWS, AND YOU ARE SOLELY RESPONSIBLE FOR ENSURING THAT YOUR USE CONFORMS TO THE APPLICABLE LAW. ESPECIALLY, YOU ARE RESPONSIBLE, FOR USING THIS PRODUCT IN A MANNER THAT DOES NOT INFRINGE ON THE RIGHTS OF THIRD PARTIES, INCLUDING WITHOUT LIMITATION, RIGHTS OF PUBLICITY, INTELLECTUAL PROPERTY RIGHTS, DATA PROTECTION, AND OTHER PRIVACY RIGHTS. YOU SHALL NOT USE THIS PRODUCT FOR ANY PROHIBITED END-USES, INCLUDING THE DEVELOPMENT OR PRODUCTION OF WEAPONS OF MASS DESTRUCTION, THE DEVELOPMENT OR PRODUCTION OF CHEMICAL OR BIOLOGICAL WEAPONS, ANY ACTIVITIES IN THE CONTEXT RELATED TO ANY NUCLEAR EXPLOSIVE OR UNSAFE NUCLEAR FUEL-CYCLE, OR IN SUPPORT OF HUMAN RIGHTS ABUSES.


IN THE EVENT OF ANY CONFLICTS BETWEEN THIS MANUAL AND THE APPLICABLE LAW, THE LATTER PREVAILS.

	This product and – if applicable – the supplied accessories too are marked with “CE” and comply therefore with the applicable harmonized European standards listed under the RE Directive 2014/53/EU, the EMC Directive 2014/30/EU, the RoHS Directive 2011/65/EU.
	2012/19/EU (WEEE directive): Products marked with this symbol cannot be disposed of as unsorted municipal waste in the European Union. For proper recycling, return this product to your local supplier upon the purchase of equivalent new equipment, or dispose of it at designated collection points. For more information see: <a href="http://www.recyclethis.info">www.recyclethis.info</a>
	2006/66/EC (battery directive): This product contains a battery that cannot be disposed of as unsorted municipal waste in the European Union. See the product documentation for specific battery information. The battery is marked with this symbol, which may include lettering to indicate cadmium (Cd), lead (Pb), or mercury (Hg). For proper recycling, return the battery to your supplier or to a designated collection point. For more information see: <a href="http://www.recyclethis.info">www.recyclethis.info</a>

### BATTERY CAUTION

	<p>replacement of a battery with an incorrect type that can defeat a safeguard (for example, in the case of some lithium battery types);</p> <ul style="list-style-type: none"> <li>– disposal of a battery into fire or a hot oven, or mechanically crushing or cutting of a battery, that can result in an explosion;</li> <li>– leaving a battery in an extremely high temperature surrounding environment that can result in an explosion or the leakage of flammable liquid or gas; and</li> <li>– a battery subjected to the extremely low air pressure that may result in an explosion or the leakage of flammable liquid or gas.</li> </ul> <p>Chemical burning danger Do not swallow the battery. Keep new and used batteries away from the children. If you think batteries might have been swallowed or placed inside any part of the body, seek immediate medical attention. Risk of explosion if batteries are replaced by an incorrect type. Replacement of a battery with an incorrect type can defeat a safeguard.</p> <p>Dispose of used batteries according to the instructions and local regulations. If the battery compartment does not close securely, stop using the product and keep it away from children. Install the batteries according to the polarity mark on the battery holder. The opposite polarity may cause device damage.</p>
---	--

### INSTALLATION CAUTION

	<p>The additional force shall be equal to three times the weight of the equipment but not less than 50 N. The equipment and its associated mounting means shall remain secure during the installation. After the installation, the equipment, including any associated mounting plate, shall not be damaged. Install the device on the place with nonflammable surfaces, such as a concrete wall.</p>
--	---



### FCC Information


Please take attention that changes or modifications not expressly approved by the party responsible for compliance could void the user's authority to operate the equipment.

This device complies with Part 15 of the FCC Rules. Operation is subject to the following two conditions:

- (1) This device may not cause harmful interference, and
- (2) This device must accept any interference received, including interference that may cause undesired operation.

This equipment complies with FCC radiation exposure limits set forth for an uncontrolled environment. This equipment should be installed and operated with a minimum distance of 20cm between the radiator & your body.

### Documents / Resources

	<p><a href="#">HIKVISION DS-PS1-E-WA Wireless External Sounder</a> [pdf] User Guide S020203113, 2ADTD-S020203113, 2ADTDS020203113, DS-PS1-E-WA Wireless External Sounder, Wireless External Sounder, External Sounder, Sounder</p>
---	--