



# HIKVISION DS-PM1-I16O2-WE Multi IO Transmitter User Guide

[Home](#) » [Hikvision](#) » HIKVISION DS-PM1-I16O2-WE Multi IO Transmitter User Guide



## Contents [ [hide](#) ]

- [1 DS-PM1-I16O2-WE Multi IO Transmitter](#)
- [2 Appearance](#)
- [3 Set up](#)
- [4 Specification](#)
- [5 Documents / Resources](#)
  - [5.1 References](#)
- [6 Related Posts](#)

## DS-PM1-I16O2-WE Multi IO Transmitter

EN 50131-1:2006+A1:2009+A2:2017+A3:2020

EN 50131-3:2009

EN 50131-5-3:2017

EN 50131-6:2017+A1:2021

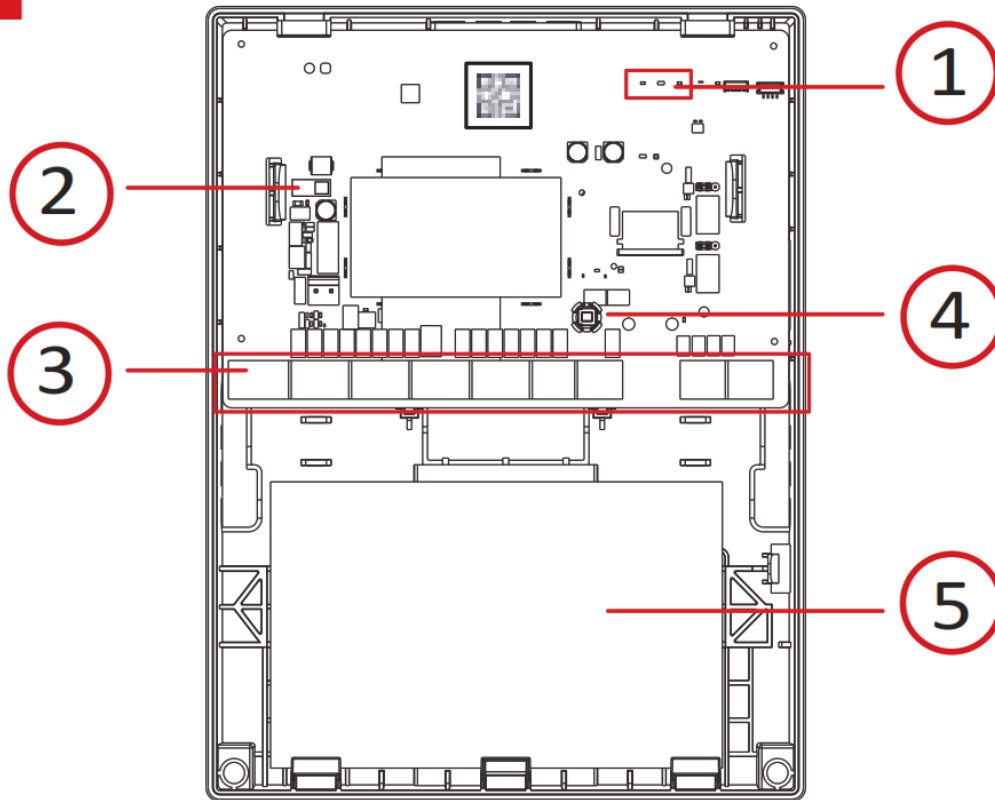
EN 50130-4:2011+A1:2014

EN 50130-5:2011

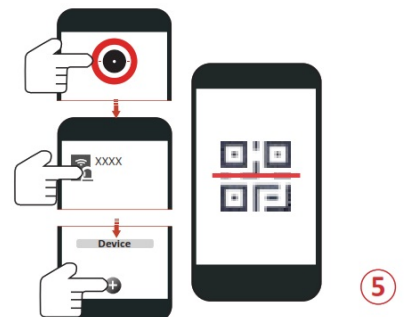
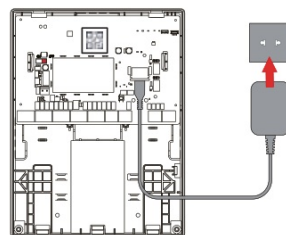
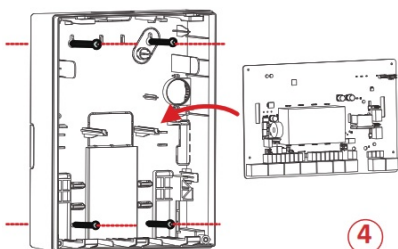
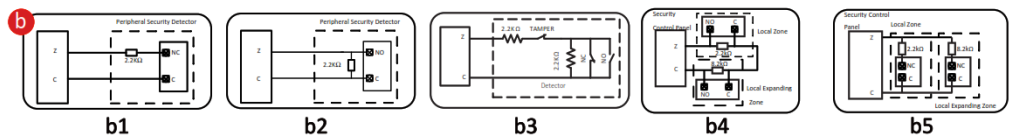
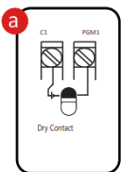
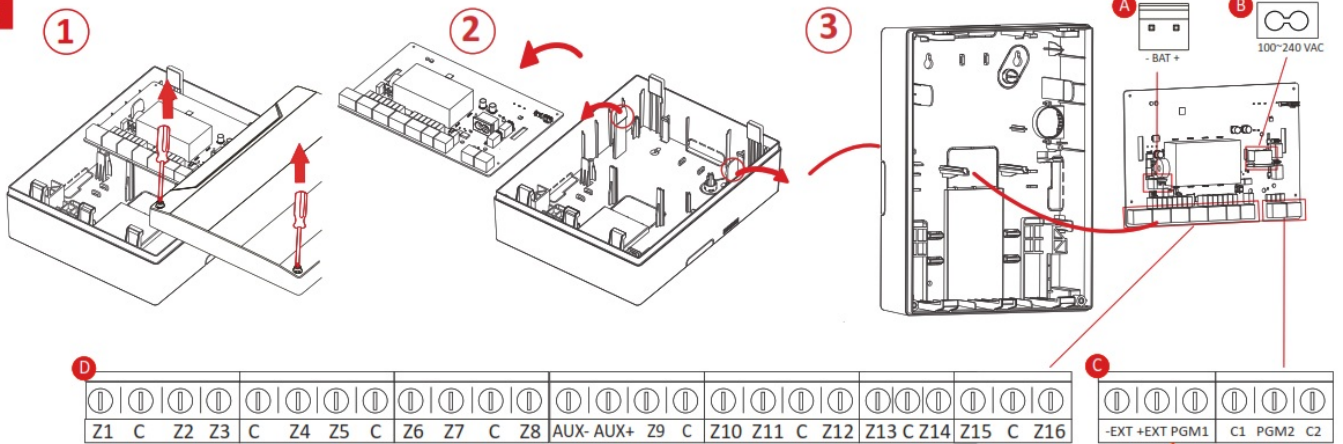
Security Grade(SG) 2

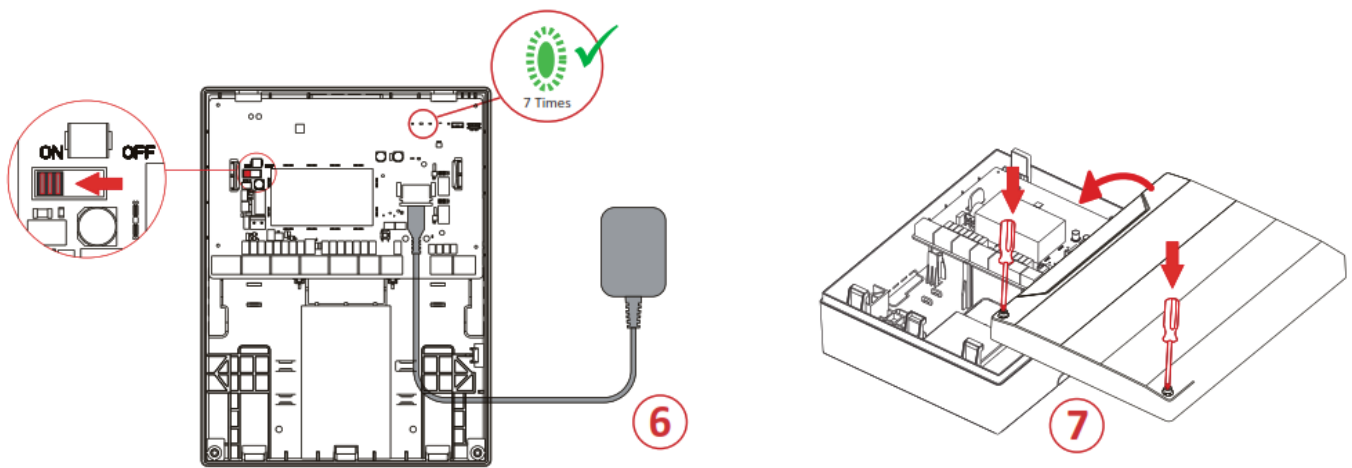
Environmental Class(EC) II

# 1



## 2





<http://enpinfodata.hikvision.com/analysisQR/showQR/95feeb7>

## Appearance

### 1. LED Indicator

1. Alarm Indicator Fault Indicator Enrollment Indicator	Alarm: Solid red for 2s Fault alarm: Solid amber Enrollment completed: Flashing green for 7 times
---	--

2. Power Switch
3. Wiring Terminal
4. Tamper Switch
5. Battery Holder

## Set up

1. Open the shell.
2. Wiring
  - A. Battery Plug
  - B. Power Supply: 100 to 240 VAC
  - C. Power Supply: -EXT and +EXT; AUX- and AUX+
    - a. Alarm Output (NO1/NC1 and COM1): PGM1 and C1
    - b. Alarm Input (NO2/NC2 and COM2): PGM2 and C2

- b1. NC Detector
  - b2. NO Detector
  - b3. Tamper-proof
  - b4. Dual-Zone Series Connection
  - b5. Dual-Zone Parallel Connection
  - D. Zone Input: Z1 to Z16 and C
3. Installation
  4. Set up with App.
  5. Power on the transmitter.

Enrollment completed: Flashing green 7 times.

## Specification

RF Frequency	868 MHz
Modulation	2GFSK
Method	Two-way communication
RF Distance	800 m (open area)
Zone Input	16
EOL	1K, 2.2K, 4.7K, 8.2K
Tamper Switch	2 (Front and Rear)
Relay Output	2
12 V Input	1, Connects to the Battery
12 V Output	2-channel Total Consumption: 1 A
Power Switch	1
Series Port	1
LED Status	3: Alarm/Tamper (Red), Fault (Amber), Signal Strength (Green/Red)
Power Supply	100 to 240 VAC
Operation temperature	-10°C to 40°C
Operation humidity	10% to 90%
Dimension (W x H x D)	199 x 261 x 86.4mm
Weight	975 g(without battery)

**Note:** The maximum altitude to use the transmitter is 5000 m.

UD24267B-C

©2021 Hangzhou Hikvision Digital Technology Co., Ltd. All rights reserved.

About this Manual

The Manual includes instructions for using and managing the Product. Pictures, charts, images, and all other information hereinafter are for description and explanation only. The information contained in the Manual is subject to change, without notice, due to firmware updates or other reasons. Please find the latest version of this Manual on the Hikvision website (<https://www.hikvision.com/>).

Please use this Manual with the guidance of professionals trained in supporting the Product.

and other Hikvision trademarks and logos are the properties of Hikvision in various jurisdictions.

Other trademarks and logos mentioned are the properties of their respective owners.

#### **Disclaimer**

TO THE MAXIMUM EXTENT PERMITTED BY APPLICABLE LAW, THIS MANUAL AND THE PRODUCT DESCRIBED, WITH ITS HARDWARE, SOFTWARE, AND FIRMWARE, ARE PROVIDED “AS IS” AND “WITH ALL FAULTS AND ERRORS”. HIKVISION MAKES NO WARRANTIES, EXPRESS OR IMPLIED, INCLUDING WITHOUT LIMITATION, MERCHANTABILITY, SATISFACTORY QUALITY, OR FITNESS FOR A PARTICULAR PURPOSE. THE USE OF THE PRODUCT BY YOU IS AT YOUR OWN RISK. IN NO EVENT WILL HIKVISION BE LIABLE TO YOU FOR ANY SPECIAL, CONSEQUENTIAL, INCIDENTAL, OR INDIRECT DAMAGES, INCLUDING, AMONG OTHERS, DAMAGES FOR LOSS OF BUSINESS PROFITS, BUSINESS INTERRUPTION, OR LOSS OF DATA,

CORRUPTION OF SYSTEMS, OR LOSS OF DOCUMENTATION, WHETHER BASED ON BREACH OF CONTRACT, TORT (INCLUDING NEGLIGENCE), PRODUCT LIABILITY, OR OTHERWISE, IN CONNECTION WITH THE USE OF THE PRODUCT, EVEN IF HIKVISION HAS BEEN ADVISED OF THE POSSIBILITY OF SUCH DAMAGES OR LOSS.

YOU ACKNOWLEDGE THAT THE NATURE OF THE INTERNET PROVIDES FOR INHERENT SECURITY RISKS, AND HIKVISION SHALL NOT TAKE ANY RESPONSIBILITY FOR ABNORMAL OPERATION, PRIVACY LEAKAGE, OR OTHER DAMAGES RESULTING FROM CYBER-ATTACKS, HACKER ATTACKS, VIRUS INFECTIONS, OR OTHER INTERNET SECURITY RISKS; HOWEVER, HIKVISION WILL PROVIDE TIMELY TECHNICAL SUPPORT IF REQUIRED.

YOU AGREE TO USE THIS PRODUCT IN COMPLIANCE WITH ALL APPLICABLE LAWS, AND YOU ARE SOLELY RESPONSIBLE FOR ENSURING THAT YOUR USE CONFORMS TO THE APPLICABLE LAW. ESPECIALLY, YOU ARE RESPONSIBLE, FOR USING THIS PRODUCT IN A MANNER THAT DOES NOT INFRINGE ON THE RIGHTS OF THIRD PARTIES, INCLUDING WITHOUT LIMITATION, RIGHTS OF PUBLICITY, INTELLECTUAL PROPERTY RIGHTS, DATA PROTECTION, AND OTHER PRIVACY RIGHTS. YOU SHALL NOT USE THIS PRODUCT FOR ANY PROHIBITED END-USES, INCLUDING THE DEVELOPMENT OR PRODUCTION OF WEAPONS OF MASS DESTRUCTION, THE DEVELOPMENT OR PRODUCTION OF CHEMICAL OR BIOLOGICAL WEAPONS, ANY ACTIVITIES IN THE CONTEXT RELATED TO ANY NUCLEAR EXPLOSIVE OR UNSAFE NUCLEAR FUEL CYCLE, OR IN SUPPORT OF HUMAN RIGHTS ABUSES.

IN THE EVENT OF ANY CONFLICTS BETWEEN THIS MANUAL AND THE APPLICABLE LAW, THE LATTER PREVAILS.



This product and – if applicable – the supplied accessories too are marked with “CE” and comply therefore with the applicable harmonized European standards listed under the RE Directive 2014/53/EU, the EMC Directive 2014/30/EU, the RoHS Directive 2011/65/EU.



2012/19/EU (WEEE directive): Products marked with this symbol cannot be disposed of as unsorted municipal waste in the European Union. For proper recycling, return this product to your local supplier upon the purchase of equivalent new equipment, or dispose of it at designated collection points. For more information see:

[www.recyclethis.info](http://www.recyclethis.info)



2006/66/EC (battery directive): This product contains a battery that cannot be disposed of as unsorted municipal waste in the European Union. See the product documentation for specific battery information. The battery is marked with this symbol, which may include lettering to indicate cadmium (Cd), lead (Pb), or mercury (Hg). For proper recycling, return the battery to your supplier or to a designated collection point. For more information see: [www.recyclethis.info](http://www.recyclethis.info).



**CAUTION**

1. Install the equipment according to the instructions in this manual.
2. This equipment is not suitable for use in locations where children are likely to be present.
3. This equipment is suitable for use in gang boxes or other enclosure-protected devices only.
4. To prevent injury, this equipment must be securely attached to the floor/wall in accordance with the installation instructions.
5. No naked flame sources, such as lighted candles, should be placed on the equipment.
6. The equipment has been designed when required, modified for connection to an IT power distribution system.
7. A readily accessible disconnect device shall be incorporated external to the equipment.
8. The socket-outlet shall be installed near the equipment and shall be easily accessible.
9. Burned fingers when handling the device. Wait one-half hour after switching off before handling the parts.
10. Use only power supplies at the standard of 100 VAC to 240 VAC, 50/60 HZ.
11. The equipment shall not be exposed to dripping or splashing and no objects filled with liquids, such as vases, shall be placed on the equipment.



Ensure correct wiring of the terminals for connection to an AC mains supply.



indicates hazardous life and the external wiring connected to the terminals requires installation by an instructed person.

## Documents / Resources



**[HIKVISION DS-PM1-I16O2-WE Multi IO Transmitter](#)** [pdf] User Guide

DS-PM1-I16O2-WE Multi IO Transmitter, DS-PM1-I16O2-WE, Multi IO Transmitter, Multi Transmitter, IO Transmitter, DS-PM1-I16O2-WE Transmitter, Transmitter

## References

- [🌐 HOME](#)
- [🌐 Hikvision US | The world's largest video surveillance manufacturer |](#)