



HIKVISION DS-PK1-LT-WE Wireless LCD Keypad User Guide

[Home](#) » [Hikvision](#) » HIKVISION DS-PK1-LT-WE Wireless LCD Keypad User Guide 

Contents

1 HIKVISION DS-PK1-LT-WE Wireless LCD Keypad

2 Diagram Reference

3 Specification

4 Documents / Resources

4.1 References

5 Related Posts



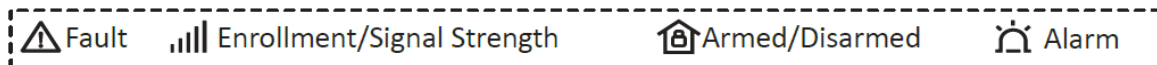
HIKVISION DS-PK1-LT-WE Wireless LCD Keypad



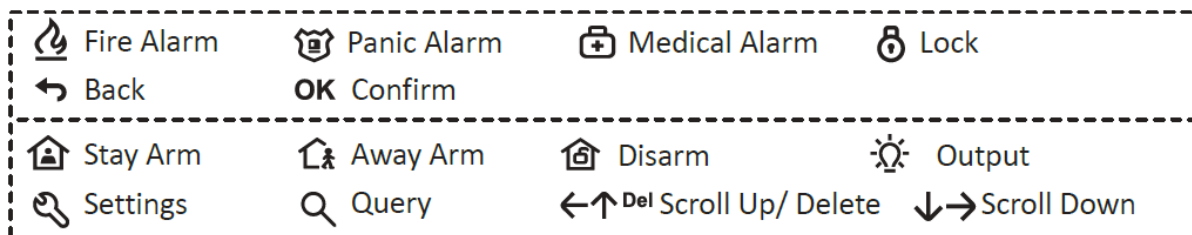
Diagram Reference

1. Appearance

1. Indicator



2. Numeric and Function Key



3. Swipe Tag Area

4. Tamper Switch

5. MCU Serial Port

6. RFM Serial Port

7. Power Switch

8. Touch Key Serial Port

2. Enrollment

3. Installation

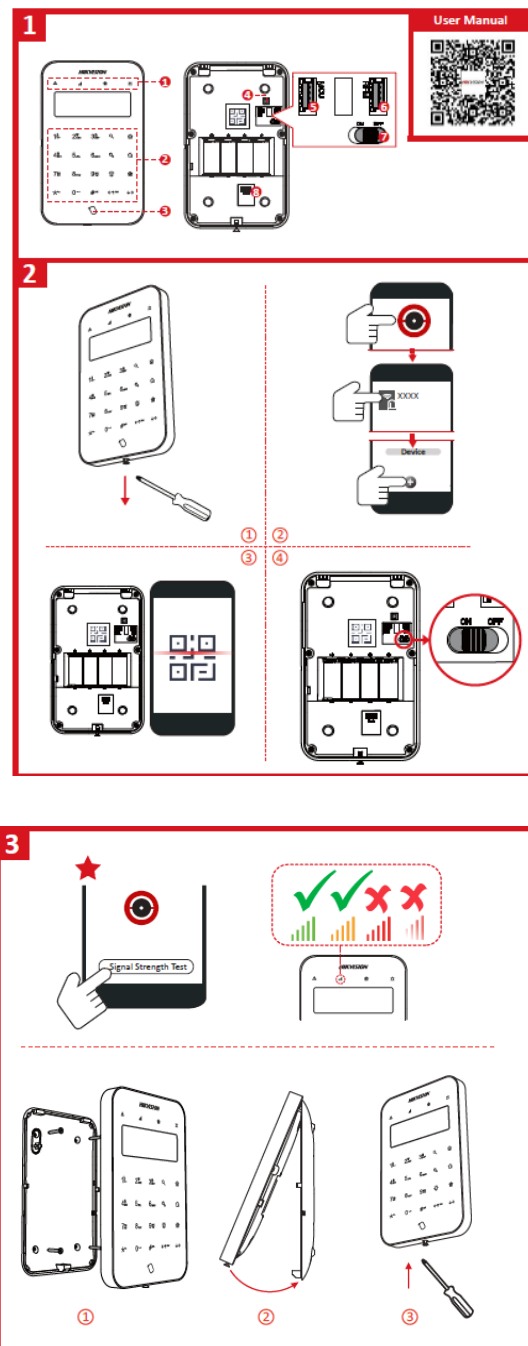
Check signal strength.

User Manual

Scan the QR code for more information and operation help.

Specification

Wireless Keypad		
RF	Wireless technology	Tri-X, two-way communication
	RF frequency	868 MHz
	RF modulation	2GFSK
	RF distance	1200 m (open area)
Interface	LED indicator	Fault (orange), enrollment/signal (red/green), arm (blue), disarm (green), alarm (red)
	Buzzer	Supported
	Power switch	Power on/off
	Tamper-proof	Supported, front and rear
	Serial port	3
	Tag reader built-in	Supported
	Numeric key	Number key: 0 to 9 Function key: *, #, query, away arm, stay arm, disarm, output, settings, right, left
LCD Display	System fault display	Supported
	System status display	Supported
	Operation	Supported
	Configuration	Supported
Electrical & Battery	Power consumption	Quiescent current: 80 μ A Max current: 300 mA Voltage: 3 V
	Battery type	Four CR123 batteries
	Battery life span	Standby time more than two years
Other	Operation temperature	-10°C to 55°C
	Operation humidity	10% to 90%
	Color	White
	Installation method	Wall-mounting
	Dimension (WxHxD)	174.63 mm x 109.62 mm x 25.25 mm
	Weight	With batteries: 348 g Without batteries: 282 g



©2022 Hangzhou Hikvision Digital Technology Co., Ltd. All rights reserved.

About this Manual

The Manual includes instructions for using and managing the Product. Pictures, charts, images and all other information hereinafter are for description and explanation only. The information contained in the Manual is subject to change, without notice, due to firmware updates or other reasons. Please find the latest version of this Manual at the Hikvision website (<https://www.hikvision.com/>).

Please use this Manual with the guidance and assistance of professionals trained in supporting the Product.

Trademarks

and other Hikvision's trademarks and logos are the properties of Hikvision in various jurisdictions. Other trademarks and logos mentioned are the properties of their respective owners.

Disclaimer

TO THE MAXIMUM EXTENT PERMITTED BY APPLICABLE LAW, THIS MANUAL AND THE PRODUCT DESCRIBED, WITH ITS HARDWARE, SOFTWARE AND FIRMWARE, ARE PROVIDED "AS IS" AND "WITH ALL FAULTS AND ERRORS". HIKVISION MAKES NO WARRANTIES, EXPRESS OR IMPLIED, INCLUDING WITHOUT LIMITATION, MERCHANTABILITY, SATISFACTORY QUALITY, OR FITNESS FOR A PARTICULAR PURPOSE. THE USE OF THE PRODUCT BY YOU IS AT YOUR OWN RISK. IN NO EVENT WILL HIKVISION BE LIABLE TO YOU FOR ANY SPECIAL, CONSEQUENTIAL, INCIDENTAL, OR INDIRECT DAMAGES, INCLUDING, AMONG OTHERS, DAMAGES FOR LOSS OF BUSINESS PROFITS, BUSINESS INTERRUPTION, OR LOSS OF

DATA, CORRUPTION OF SYSTEMS, OR LOSS OF DOCUMENTATION, WHETHER BASED ON BREACH OF CONTRACT, TORT (INCLUDING NEGLIGENCE), PRODUCT LIABILITY, OR OTHERWISE, IN CONNECTION WITH THE USE OF THE PRODUCT, EVEN IF HIKVISION HAS BEEN ADVISED OF THE POSSIBILITY OF SUCH DAMAGES OR LOSS.

YOU ACKNOWLEDGE THAT THE NATURE OF THE INTERNET PROVIDES FOR INHERENT SECURITY RISKS, AND HIKVISION SHALL NOT TAKE ANY RESPONSIBILITIES FOR ABNORMAL OPERATION, PRIVACY LEAKAGE OR OTHER DAMAGES RESULTING FROM CYBER-ATTACK, HACKER ATTACK, VIRUS INFECTION, OR OTHER INTERNET SECURITY RISKS; HOWEVER, HIKVISION WILL PROVIDE TIMELY TECHNICAL SUPPORT IF REQUIRED.

YOU AGREE TO USE THIS PRODUCT IN COMPLIANCE WITH ALL APPLICABLE LAWS, AND YOU ARE SOLELY RESPONSIBLE FOR ENSURING THAT YOUR USE CONFORMS TO THE APPLICABLE LAW. ESPECIALLY, YOU ARE RESPONSIBLE, FOR USING THIS PRODUCT IN A MANNER THAT DOES NOT INFRINGE ON THE RIGHTS OF THIRD PARTIES, INCLUDING WITHOUT LIMITATION, RIGHTS OF PUBLICITY, INTELLECTUAL PROPERTY RIGHTS, OR DATA PROTECTION AND OTHER PRIVACY RIGHTS. YOU SHALL NOT USE THIS PRODUCT FOR ANY PROHIBITED END-USES, INCLUDING THE DEVELOPMENT OR PRODUCTION OF WEAPONS OF MASS DESTRUCTION, THE DEVELOPMENT OR PRODUCTION OF CHEMICAL OR BIOLOGICAL WEAPONS, ANY ACTIVITIES IN THE CONTEXT RELATED TO ANY NUCLEAR EXPLOSIVE OR UNSAFE NUCLEAR FUEL-CYCLE, OR IN SUPPORT OF HUMAN RIGHTS ABUSES. IN THE EVENT OF ANY CONFLICTS BETWEEN THIS MANUAL AND THE APPLICABLE LAW, THE LATTER PREVAILS.

- This product and – if applicable – the supplied accessories too are marked with “CE” and comply therefore with the applicable harmonized European standards listed under the RE Directive 2014/53/EU, the EMC Directive 2014/30/EU, the RoHS Directive 2011/65/EU
- 2012/19/EU (WEEE directive): Products marked with this symbol cannot be disposed of as unsorted municipal waste in the European Union. For proper recycling, return this product to your local supplier upon the purchase of equivalent new equipment, or dispose of it at designated collection points. For more information see: www.recyclethis.info
- 2006/66/EC (battery directive): This product contains a battery that cannot be disposed of as unsorted municipal waste in the European Union. See the product documentation for specific battery information. The battery is marked with this symbol, which may include lettering to indicate cadmium (Cd), lead (Pb), or mercury (Hg). For proper recycling, return the battery to your supplier or to a designated collection point. For more information see: www.recyclethis.info

Caution

+ identifies the positive terminal(s) of equipment which is used with, or generates direct current. -identifies the negative terminal(s) of equipment which is used with, or generates direct current.

No naked flame sources, such as lighted candles, should be placed on the equipment.

The serial port of the equipment is used for debugging only.

Install the equipment according to the instructions in this manual.

To prevent injury, this equipment must be securely attached to the floor/wall in accordance with the installation instructions.

Keep correct direction when moving or using the equipment.

The additional force shall be equal to three times the weight of the equipment but not less than 50N. The equipment and its associated mounting means shall remain secure during the installation.

After the installation, the equipment, including any associated mounting plate, shall not be damaged.

Documents / Resources



[HIKVISION DS-PK1-LT-WE Wireless LCD Keypad](#) [pdf] User Guide

DS-PK1-LT-WE Wireless LCD Keypad, DS-PK1-LT-WE, Wireless LCD Keypad, Wireless Keypa
d, LCD Keypad, Keypad

References

- [🌐 Hikvision US | The world's largest video surveillance manufacturer |](#)
- [🌐 HOME](#)
- [🌐 Hikvision US | The world's largest video surveillance manufacturer |](#)