



# HIKVISION DS-PK1-LT-WE-WB Series Wireless LCD Keypad User Manual

[Home](#) » [Hikvision](#) » HIKVISION DS-PK1-LT-WE-WB Series Wireless LCD Keypad User Manual 

## Contents

- 1 HIKVISION DS-PK1-LT-WE-WB Series Wireless LCD Keypad User Manual
- 2 Diagram References
- 3 Disclaimer
- 4 Appearance
- 5 Indication LED Description
- 6 Buzzer Description
- 7 Enrollment
- 8 Enroll the Peripheral Locally
- 9 Enroll the Peripheral with QR Code or Serial No.
- 10 Enroll the Peripheral with QR Code or Serial No
- 11 Installation
- 12 Command
- 13 Arming Process (Enabled/Disabled on Control Panel) Pre-arming
- 14 Fault Checking Indication:
- 15 Exit Delay
- 16 Indication:
- 17 Indication:
- 18 Indication:
- 19 Reset
- 20 Simple Mode
- 21 Disarm
- 22 Note:
- 23 Settings
- 24 Specification
- 25 Read More About This Manual & Download PDF:
- 26 Documents / Resources
  - 26.1 References
- 27 Related Posts

# HIKVISION DS-PK1-LT-WE-WB Series Wireless LCD Keypad User Manual



## Diagram References

©2022 Hangzhou Hikvision Digital Technology Co., Ltd. All rights reserved. About this Manual  
The Manual includes instructions for using and managing the Product. Pictures, charts, images and all other information hereinafter are for description and explanation only. The information contained in the Manual is subject to change, without notice, due to firmware updates or other reasons. Please find the latest version of this Manual at the Hikvision website (<https://www.hikvision.com/>). Please use this Manual with the guidance and assistance of professionals trained in supporting the Product.  
Trademarks and other Hikvision's trademarks and logos are the properties of Hikvision in various jurisdictions. Other trademarks and logos mentioned are the properties of their respective owners.

## Disclaimer

TO THE MAXIMUM EXTENT PERMITTED BY APPLICABLE LAW, THIS MANUAL AND THE PRODUCT DESCRIBED, WITH ITS HARDWARE, SOFTWARE AND FIRMWARE, ARE PROVIDED "AS IS" AND "WITH ALL FAULTS AND ERRORS". HIKVISION MAKES NO WARRANTIES, EXPRESS OR IMPLIED, INCLUDING WITHOUT LIMITATION, MERCHANTABILITY, SATISFACTORY QUALITY, OR FITNESS FOR A PARTICULAR PURPOSE. THE USE OF THE PRODUCT BY YOU IS AT YOUR OWN RISK. IN NO EVENT WILL HIKVISION BE LIABLE TO YOU FOR ANY SPECIAL, CONSEQUENTIAL, INCIDENTAL, OR INDIRECT DAMAGES, INCLUDING, AMONG OTHERS, DAMAGES FOR LOSS OF BUSINESS PROFITS, BUSINESS INTERRUPTION, OR LOSS OF DATA, CORRUPTION OF SYSTEMS, OR LOSS OF DOCUMENTATION, WHETHER BASED ON BREACH OF CONTRACT, TORT (INCLUDING NEGLIGENCE), PRODUCT LIABILITY, OR OTHERWISE, IN CONNECTION WITH THE USE OF THE PRODUCT, EVEN IF HIKVISION HAS BEEN ADVISED OF THE POSSIBILITY OF SUCH DAMAGES OR LOSS.

YOU ACKNOWLEDGE THAT THE NATURE OF THE INTERNET PROVIDES FOR INHERENT SECURITY RISKS, AND HIKVISION SHALL NOT TAKE ANY RESPONSIBILITIES FOR ABNORMAL OPERATION, PRIVACY LEAKAGE OR OTHER DAMAGES RESULTING FROM CYBER-ATTACK, HACKER ATTACK, VIRUS INFECTION, OR OTHER INTERNET SECURITY RISKS; HOWEVER, HIKVISION WILL PROVIDE TIMELY TECHNICAL SUPPORT IF REQUIRED. YOU AGREE TO USE THIS PRODUCT IN COMPLIANCE WITH ALL APPLICABLE LAWS, AND YOU ARE SOLELY RESPONSIBLE FOR ENSURING THAT YOUR USE CONFORMS TO THE APPLICABLE LAW. ESPECIALLY, YOU ARE RESPONSIBLE, FOR USING THIS PRODUCT IN A MANNER THAT DOES NOT INFRINGE ON THE RIGHTS OF THIRD PARTIES, INCLUDING WITHOUT LIMITATION, RIGHTS OF PUBLICITY, INTELLECTUAL PROPERTY RIGHTS, OR DATA PROTECTION AND OTHER PRIVACY RIGHTS. YOU SHALL NOT USE THIS PRODUCT FOR ANY PROHIBITED END-USES, INCLUDING THE DEVELOPMENT OR PRODUCTION OF WEAPONS OF MASS DESTRUCTION, THE DEVELOPMENT OR PRODUCTION OF CHEMICAL OR

BIOLOGICAL WEAPONS, ANY ACTIVITIES IN THE CONTEXT RELATED TO ANY NUCLEAR EXPLOSIVE OR UNSAFE NUCLEAR FUEL-CYCLE, OR IN SUPPORT OF HUMAN RIGHTS ABUSES. IN THE EVENT OF ANY CONFLICTS BETWEEN THIS MANUAL AND THE APPLICABLE LAW, THE LATTER PREVAILS.



+ identifies the positive terminal(s) of equipment which is used with, or generates direct current. – identifies the negative terminal(s) of equipment which is used with, or generates direct current.

No naked flame sources, such as lighted candles, should be placed on the equipment.

The serial port of the equipment is used for debugging only.

Install the equipment according to the instructions in this manual.

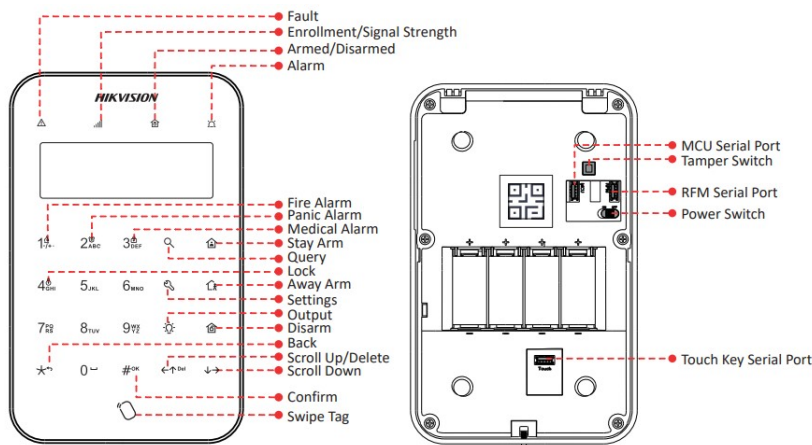
To prevent injury, this equipment must be securely attached to the floor/wall in accordance with the installation instructions.

Keep right direction when using the equipment.





The additional force shall be equal to three times the weight of the equipment but not less than 50N. The equipment and its associated mounting means shall remain secure during the installation.

After the installation, the equipment, including any associated mounting plate, shall not be damaged

## Appearance



## Indication LED Description

	With Fault No Fault	Solid orange Off		Enrollment	Flashing orange: Enrolling Green flashes 7 times: Enrolled
	Alarm	Tampering Alarm: Solid red Event Alarm: Flashing red No Alarm: Off		Signal Strength	Flashing green: Strong Flashing orange: Medium Flashing red: Weak/Disconnect
	Note: Event Alarm Priority > Tampering Alarm Priority			Power On	Solid green for 1 s
	Armed	Solid blue	Back Light		
	Disarmed	Solid green	<p>-The back light is on by default, you can set the On/Off schedule on the web client/APP of the control panel. Refer to the user manual of control panel.</p> <p>-It turns off when there is no key operation for more than 10 s to 30 s (adjustable).</p> <p>-If the keypad is not enrolled to the control panel, the back light is off.</p>		
	Entry Delay	Flashing green			
	Exit Delay	Flashing blue			

## Buzzer Description

Two short beeps: Operation succeeded

Three short beeps: Operation failed

Rapid short beeps: Entry delay

Slow short beeps: Exit delay

Repeated sound effects: Fire alarm/Medical alarm/Panic alarm/Lid opened alarm

## Enrollment

1. Remove the screw on the bottom of the keypad.
2. Disassemble the keypad and remove the rear panel.
3. Power on the security control panel.
4. Download and install APP.
5. Log in APP and tap the icon "+". Scan the QR code or enter the control panel serial No. to add the control panel.
6. Enroll the peripheral locally, with OR code, or with serial No..

### Enroll the Peripheral Locally

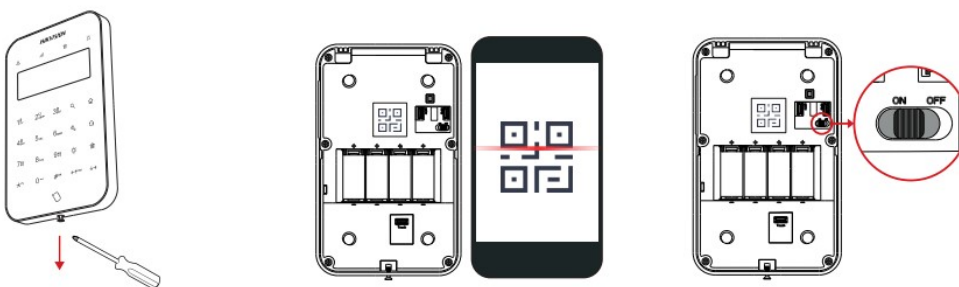
1. In the APP, tap the "Enrollment Mode" button on the control panel page to make the control panel enter the enrollment status.
2. Push the power switch of the peripheral to ON, and it will be automatically enrolled to the control panel.  
Note: when the keypad has been enrolled to the control panel A, if there is a control panel B in the enrollment mode around when the power is turned on, the keypad will enroll to the control panel B.

### Enroll the Peripheral with QR Code or Serial No.

1. In the APP, tap the icon "+" and scan the QR code or enter the serial No. on the peripheral.
2. Push the power switch of the peripheral to ON, and it will be automatically enrolled to the control panel.

### Enroll the Peripheral with QR Code or Serial No

1. In the APP, tap the icon "+" and scan the QR code or enter the serial No. on the peripheral.
2. Push the power switch of the peripheral to ON, and it will be automatically enrolled to the control panel.



Remove the screw on the bottom of the keypad. Disassemble the keypad and remove the rear panel. Scan the QR code on the rear panel of the keypad. Push the power switch to ON.

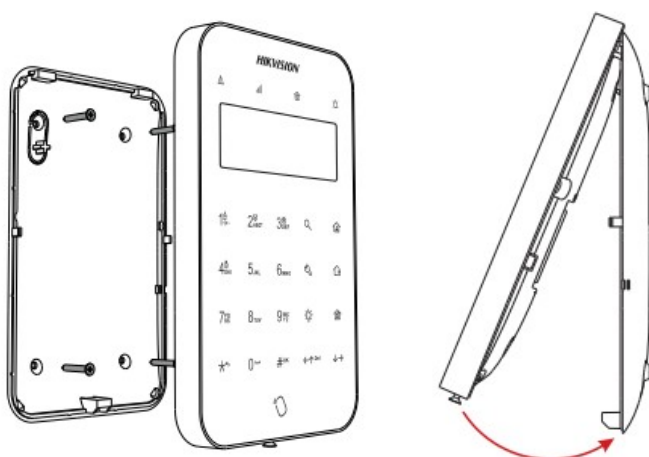
## Installation

Note: The additional force shall be equal to three times the weight of the equipment but not less than 50N. The equipment and its associated mounting means shall remain secure during the installation. After the installation, the equipment, including any associated mounting plate, shall not be damaged.

Check signal strength and select installation place

Enter the signal checking mode by operating on the control panel.

Signal LED flashes green: Strong.  
Signal LED flashes orange: Medium.  
Signal LED flashes red: Weak/Disconnected.



**CAUTION**  
IF THE BATTERY COMPARTMENT  
DOES NOT CLOSE SECURELY,  
STOP USING THE PRODUCT AND  
KEEP IT AWAY FROM CHILDREN.



1. Secure the rear panel on the wall with four supplied screws
2. Attach the front panel onto the rear panel.
3. Tighten the screw on the bottom to complete.

## Command

The keypad command is shown as follows. A short tag swiping (<3 s) is equal to a password.

Events		Codes	Notes
Arm	Away arm	Password/Tag +	
	Stay arm	Password/Tag +	
	Area away arm	Password/Tag + # + Area No. +	
	Area stay arm	Password/Tag + # + Area No. +	
Disarm	Disarm	Password/Tag +	1. When the area is selected, the corresponding page will be displayed. 2. Duress passwords can be configured on the control panel.
	Area disarm	Password/Tag + # + Area No. +	
	Duress password disarm	Duress password +	
Silence	Silence	Password/Tag + (Hold ≥3 s)	
Alarm	Fire alarm	(Hold ≥3 s)	
	Panic alarm	(Hold ≥3 s)	
	Medical alarm	(Hold ≥3 s)	
Lock	Lock/Unlock keypad	Hold  (≥3 s) to lock the keypad for 60 s. Hold  (≥3 s) again or wait 60 s to unlock.	
Relay	Relay output	1. Password/Tag +  to enter the relay selection page 2. Use # to select/cancel the relay 3. Use  to confirm	
Settings	Settings	Password/Tag +	Only the administrator and the installer have this permission.
Query	Query fault	1. Password/Tag + 2. Use # to confirm	Only the administrator and the installer and operators have this permission.
One-push Arm	One-push Arm	After enabled, the keypad can be armed with  or	The one-push arming is configured on the web client or APP of the control panel. The one-push arming does not require area selection.
Delete	Backspace	(Short press)	
	Delete all	(Hold ≥3 s)	

## Arming Process (Enabled/Disabled on Control Panel) Pre-arming

Indication:

The keypad displays “Waiting for arming”

The fault LED turns solid orange

### Fault Checking Indication:

All faults of the control panel and the zones to be operated will be displayed. You need to use scroll keys to view all faults

before next operation.

– Away arming: Confirm by

– Stay arming: Confirm by

– Cancel:

The fault LED turns flashing orange

### Exit Delay

Indication:

The keypad displays “Exit delay”

The arming LED turns flashing blue and the buzzer indicates exit delay. Arm Directly  
Press the or to arm the device.

### Indication:

Armed: arming LED solid blue for 5 s. Buzzer beeps twice.

Arming failed: Buzzer beeps three time. Cancel

Press the to cancel the arming process.

## **Indication:**

Armed: Buzzer beeps twice.

Arming failed: Buzzer beeps three time.

No Instant Operation

The count down is finished.

Armed:

## **Indication:**

arming LED solid blue for 5 s. Buzzer beeps twice.

Arming failed: Buzzer beeps three time.

## **Reset**

Hold the Tamper Switch and turn on the power until the LED flashes red 3 times.

## **Simple Mode**

Arm

The keypad is diarmed.

A short tag swiping (<3 s) to away arm.

A long tag swiping ( $\geq 3$  s) to stay arm.

## **Disarm**

The keypad is armed.

A short tag swiping (<3 s) to disarm.

## **Note:**

1. A single swiping interval needs to be longer than 3 s. Multiple swipings within 3 s count as one time.
2. Simple mode does not support arming process.

## **Settings**

User Management: Add/Edit/Delete users.

Tag Managment: Add/Edit/Delete tags.

Restore Alarm: Confirm alarm or restore tamper of the control panel. (Only when the control panel supports and enables

PD6662. Only installer has this permission.)

Company/Telephone: Edit company name and telephone number.

Control Panel Lock/Unlock: One-push to lock or unlock the control panel. (Only installer has this permission.)

Bypass/Restore Bypass: Bypass/Restore bypass zones.

## **Specification**

The keypad technical specification is shown as follows.

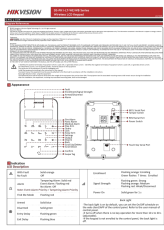


Model		WE Series	WB Series
RF	Wireless technology	Tri-X, two-way communication	
	RF frequency	868 MHz	433 MHz
	RF modulation	2GFSK	
	RF distance	1200 m (open area)	800 m (open area)
Interface	LED indicator	Fault (orange), enrollment/signal (red/green), arm (blue), disarm (green), alarm (red)	
	Buzzer	Supported	
	Power switch	Power on/off	
	Tamper-proof	Supported, front and rear	
	Serial port	3	
	Tag reader built-in	Supported	
	Numeric key	Number key: 0 to 9 Function key: *, #, query, away arm, stay arm, disarm, output, settings, right, left	
LCD Display	System fault display	Supported	
	System status display	Supported	
	Operation	Supported	
	Configuration	Supported	
Electrical & Battery	Power consumption	Quiescent current: 80 uA Max current: 300 mA Voltage: 3 V	
	Battery type	Four CR123 batteries	
	Battery life span	Standby time more than two years	
Other	Operation temperature	-10°C to 55°C	
	Operation humidity	10% to 90%	
	Color	White	
	Installation method	Wall-mounting	
	Dimension (W × H × D)	174.63 mm × 109.62 mm × 25.25 mm	
	Weight	With batteries: 348 g Without batteries: 282 g	

***Read More About This Manual & Download PDF:***

**Documents / Resources**



	<p><b><a href="#">HIKVISION DS-PK1-LT-WE-WB Series Wireless LCD Keypad</a></b> [pdf] User Manual DS-PK1-LT-WE-WB Series, Wireless LCD Keypad, LCD Keypad, Wireless Keypad, Keypad</p>
--	---

References

- [🌐 Hikvision US | The world’s largest video surveillance manufacturer |](#)