

HIKVISION

**HIKVISION DS-
PK1-E-WE, DS-
PK11-E-WEUHK
Wireless LED
Keypad**



HIKVISION DS-PK1-E-WE, DS-PK11-E-WEUHK Wireless LED Keypad User Guide

[Home](#) » [Hikvision](#) » HIKVISION DS-PK1-E-WE, DS-PK11-E-WEUHK Wireless LED Keypad User Guide 

Contents

- 1 [HIKVISION DS-PK1-E-WE, DS-PK11-E-WEUHK Wireless LED Keypad](#)
- 2 [FAQ](#)
- 3 [Diagram Reference](#)
- 4 [User Manual](#)
- 5 [Power Supply](#)
- 6 [Arm/Disarm Functions:](#)
- 7 [Output Control:](#)
- 8 [Signal Strength Test:](#)
- 9 [Specification](#)
- 10 [Documents / Resources](#)
 - 10.1 [References](#)

HIKVISION

HIKVISION DS-PK1-E-WE, DS-PK11-E-WEUHK Wireless LED Keypad



FAQ

Q: How often should I replace the batteries?

A: It is recommended to replace the AA batteries with a capacity of 2300 mAh each every two years or when low power is indicated.

Q: Can the device be used for both residential and commercial purposes?

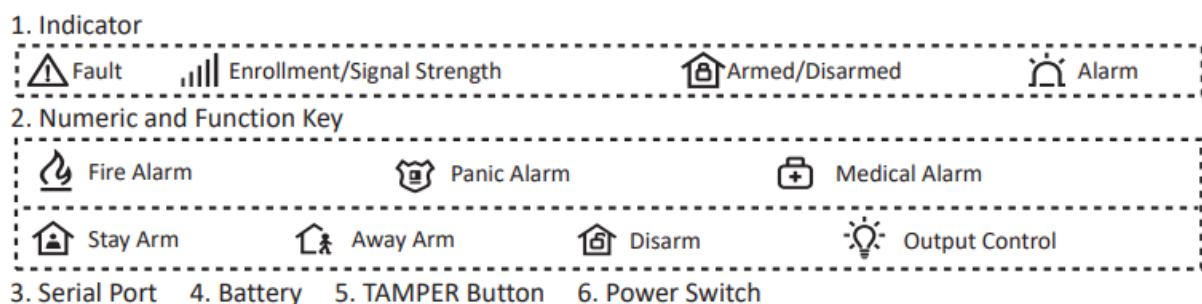
A: Yes, the device is suitable for both residential and commercial use due to its security grade and environmental class certifications.

Q: What is the weight of the device without batteries?

A: The device weighs 151g without batteries.

Diagram Reference

1. Appearance



2. Enrollment

3. Installation

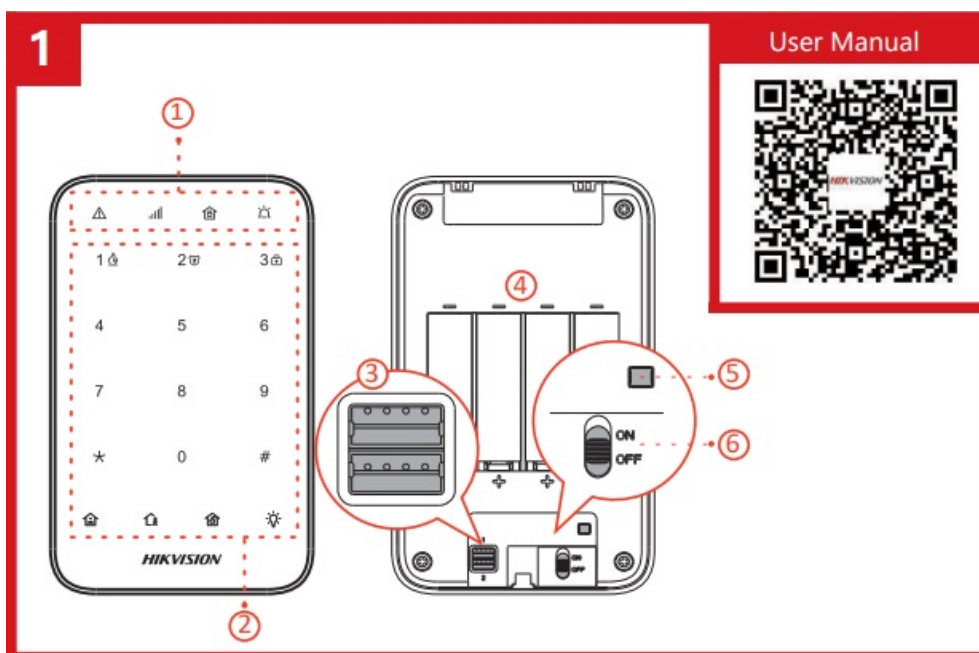
★ Check signal strength.

User Manual

Scan the QR code for more information and operation help.

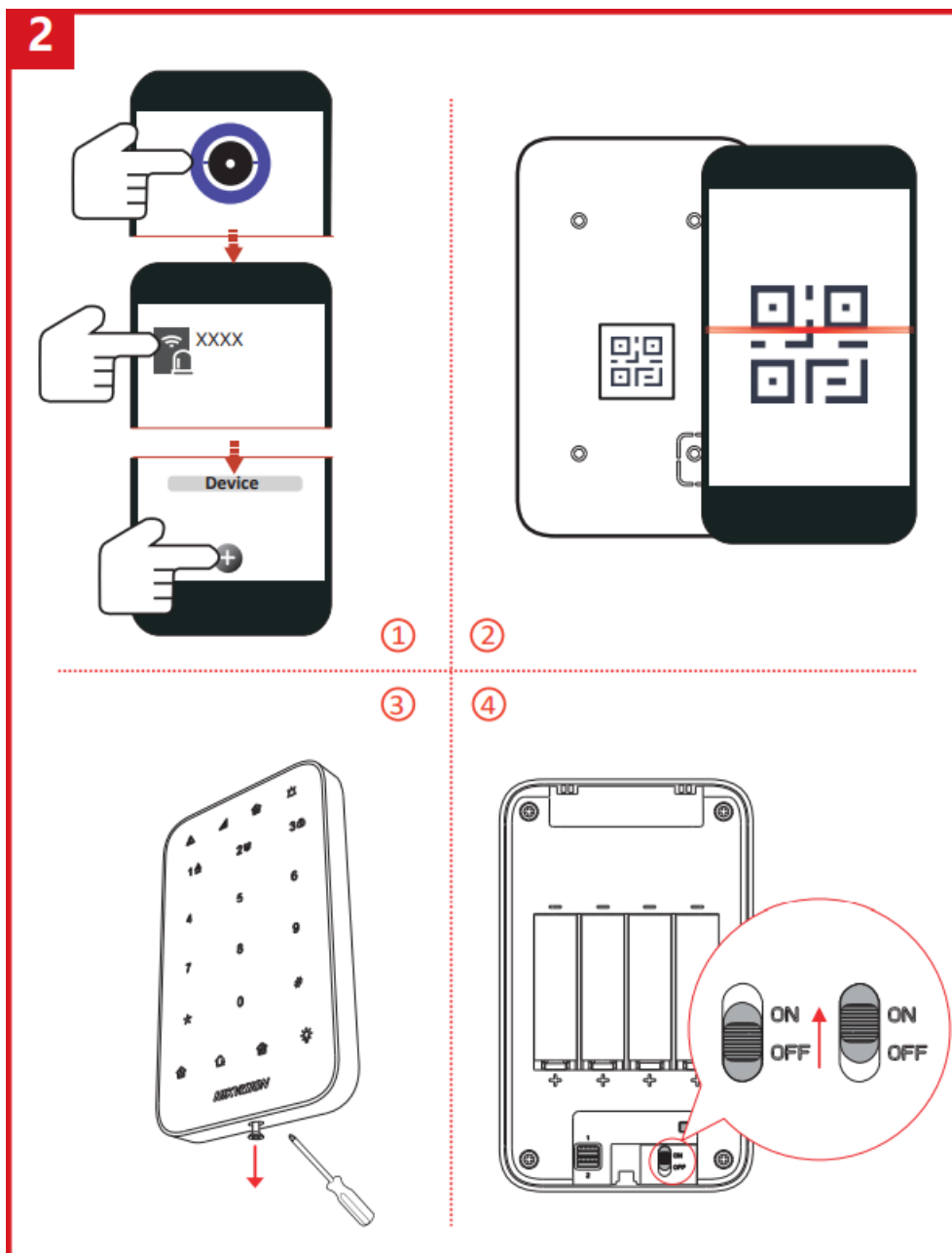
Installation

Ensure the device and mounting elements are secured during installation. Protect equipment like mounting plates from damage. Install the device on a non-flammable surface like a concrete wall.



Power Supply

The device operates on two AA batteries with a capacity of 2300 mAh each. Ensure the batteries are inserted correctly with the correct polarity. Replace batteries every two years or when low power is indicated.



Arm/Disarm Functions:

Use the numeric and function keys to arm/disarm different alarm modes such as fire alarm, panic alarm, and medical alarm. Away arm and disarm functions are available for remote operation.

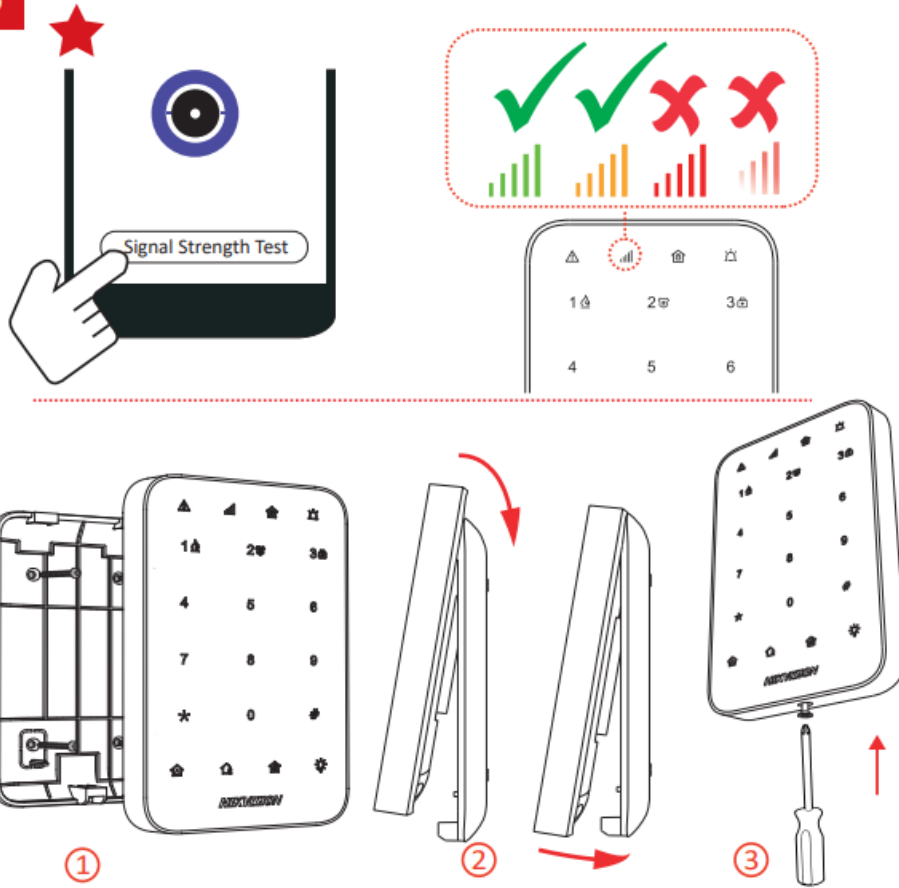
Output Control:

The device features an output control function for managing external devices or systems.

Signal Strength Test:

Perform signal strength tests to ensure reliable communication.

3



Specification

Wireless Keypad		
RF	Speed	42 Kbps
	Frequency	868 MHz
	Method	2GFSK
	Distance	1200 m (open area)
	Transmission power	13 dBm
Interface	Tamper switch	1, front and rear panel tamper-proof
	Wireless module	For wireless communication
	Power switch	Power on/off
	Buzzer	1
Display	Indicator	4: fault (orange), enrollment/signal (red/green), arming(red/green/blue), and alarm (red)
	Backlight	white
Key	Number key	10:0 to 9
	Function key	5:*, #, stay arming, away arming, disarming, and output
Operation Environment	Humidity	10 to 90
	Temperature	-10 °C to 55 °C (14 °F to 131 °F) -10 °C to 40 °C (14 °F to 104 °F) EN Certified
Appearance	Color	White/Black
	Dimension (W x H x D)	140 mm x 86 mm x 22 mm
Installation	Installation	Screw mounting
Power Supply	Power supply	1.5 VDC, four AA batteries (included, Capacity: 2300 mAh each), standby time more than two years
	Current	Max. current: 200 mA Quiescent current: 200 μA
	Low voltage value	1.1 V
	Voltage Range	Fully charged (new) to 1.1 V (battery)
Weight	Weight without batteries	151 g, and 23 g each battery
Others	PSt type	Type C
	Classification	Use inside the supervised premises

The additional force shall be equal to three times the weight of the equipment but not less than 50N. The equipment and its associated mounting means shall remain secure during the installation. After the installation, the equipment, including any associated mounting plate, shall not be damaged.
Install the device on the place with nonflammable surface, such as concrete wall.

EN 50131-1:2006+A1:2009+A2:2017

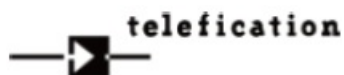
EN 50131-3:2009

EN 50131-5-3:2017


Security Grade(SG) 2

Environmental Class(EC) II

Certified by Telefication



Documents / Resources

	HIKVISION DS-PK1-E-WE, DS-PK11-E-WEUHK Wireless LED Keypad [pdf] User Guide DS-PK1-E-WE, DS-PK11-E-WEUHK, DS-PK1-E-WE DS-PK11-E-WEUHK Wireless LED Keypad, DS-PK1-E-WE DS-PK11-E-WEUHK, Wireless LED Keypad, LED Keypad, Keypad
---	---

References

- [🇧🇷 Anatel — Agência Nacional de Telecomunicações](#)
- [User Manual](#)

Manuals+. [Privacy Policy](#)

This website is an independent publication and is neither affiliated with nor endorsed by any of the trademark owners. The "Bluetooth®" word mark and logos are registered trademarks owned by Bluetooth SIG, Inc. The "Wi-Fi®" word mark and logos are registered trademarks owned by the Wi-Fi Alliance. Any use of these marks on this website does not imply any affiliation with or endorsement.