



HIKVISION DS-PDTPH-E-WB Wireless Temperature Detector User Guide

[Home](#) » [Hikvision](#) » HIKVISION DS-PDTPH-E-WB Wireless Temperature Detector User Guide 

Contents

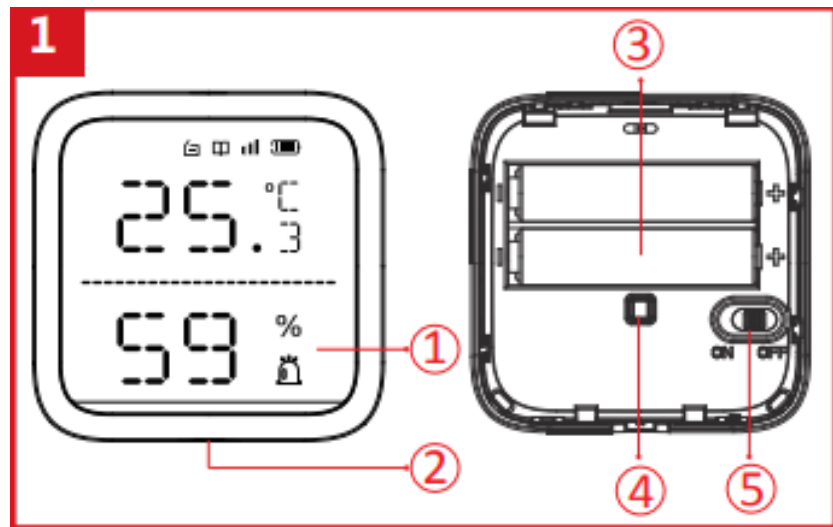
- [1 HIKVISION DS-PDTPH-E-WB Wireless Temperature Detector](#)
- [2 APPEARANCE](#)
- [3 INDICATION](#)
- [4 ENROLLMENT](#)
- [5 INSTALLATION](#)
- [6 APPLICATION](#)
- [7 Specification](#)
- [8 FCC NOTES](#)
- [9 INSTALLATION CAUTION](#)
- [10 Documents / Resources](#)
 - [10.1 References](#)
- [11 Related Posts](#)



HIKVISION DS-PDTPH-E-WB Wireless Temperature Detector



APPEARANCE



- 1. Screen
- 2. Probe Interface
- 3. Battery
- 4. Tamper Button
- 5. Power Switch

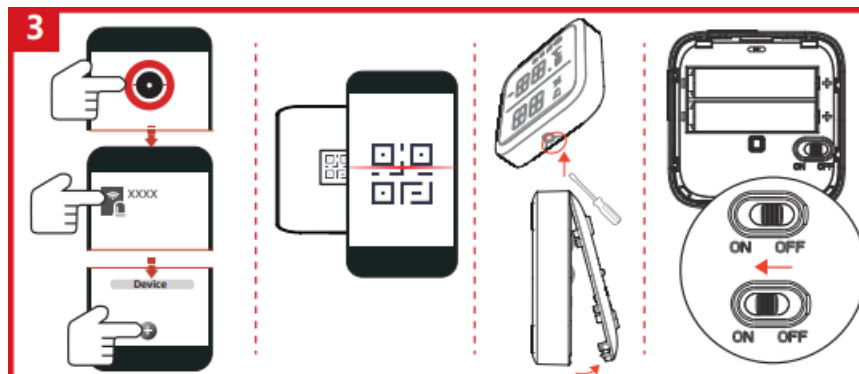
INDICATION



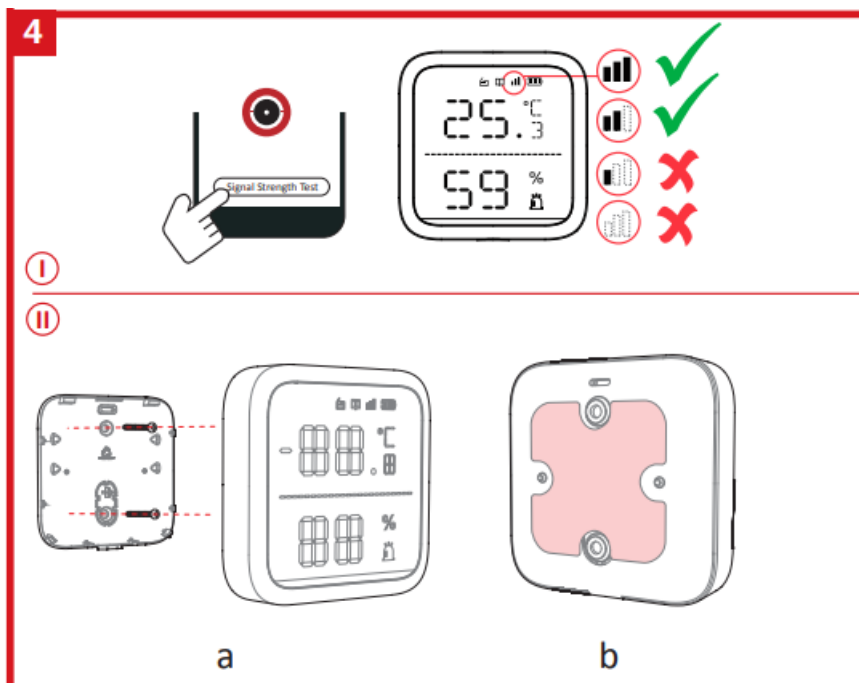
- A. Tamper Alarm

- B. Enrollment
- C. Signal Strength
- D. Battery Level
- E. Temperature Alarm

ENROLLMENT

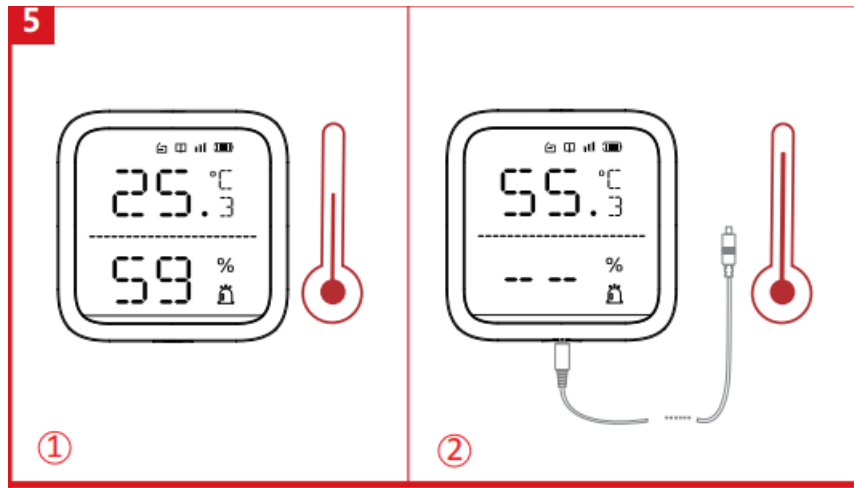


INSTALLATION



1. Check signal strength.
2. Install the detector.
 - Mount with screws.
 - Mount with sponge tape.

APPLICATION



1. Standalone Work
2. Work with Probe

Note: The humidity detection will be disabled when using probe.

Scan the QR code for more information and operation help.



Specification

Detection Gap	According to the magnet detection performance table
Tamper Protection	Front,Rear
Alarm Input	2
LED Indicator	Blue(Alarm)
Transmission Frequency	433MHz
Transmission Range	1000m (open area)
Battery Type	CR123A × 1
Standard Battery Life	5 years
Operation Temperature	-20 °C to 60 °C(-4 °F to 140 °F)
Storage Temperature	-30 °C to 65 °C (-22 °F to 149 °F)
Operation Humidity	10% to 90%
Dimension(WxHxD)	Sensor: 40.5 mm × 146 mm × 40.9 mm Magnetic Stick: 30.5mm × 146mm × 40.9 mm
Weight	247 g
Application Scenario	Outdoor, IP66

FCC NOTES

©2020 Hangzhou Hikvision Digital Technology Co., Ltd. All rights reserved. About this Manual The Manual includes instructions for using and managing the Product. Pictures, charts, images and all other information hereinafter are for description and explanation only. The information contained in the Manual is subject to change, without notice, due to firmware updates or other reasons. Please find the latest version of this Manual at the Hikvision website (<https://www.hikvision.com/>). Please use this Manual with the guidance and assistance of professionals trained in supporting the Product. and other Hikvision trademarks and logos are the properties of Hikvision in various jurisdictions. Other trademarks and logos mentioned are the properties of their respective owners.

Disclaimer

TO THE MAXIMUM EXTENT PERMITTED BY APPLICABLE LAW, THIS MANUAL AND THE PRODUCT DESCRIBED, WITH ITS HARDWARE, SOFTWARE AND FIRMWARE, ARE PROVIDED “AS IS” AND “WITH ALL FAULTS AND ERRORS”. HIKVISION MAKES NO WARRANTIES, EXPRESS OR IMPLIED, INCLUDING WITHOUT LIMITATION, MERCHANTABILITY, SATISFACTORY QUALITY, OR FITNESS FOR A PARTICULAR PURPOSE. THE USE OF THE PRODUCT BY YOU IS AT YOUR OWN RISK. IN NO EVENT WILL HIKVISION BE LIABLE TO YOU FOR ANY SPECIAL, CONSEQUENTIAL, INCIDENTAL, OR INDIRECT DAMAGES, INCLUDING, AMONG OTHERS, DAMAGES FOR LOSS OF BUSINESS PROFITS, BUSINESS INTERRUPTION, OR LOSS OF DATA, CORRUPTION OF SYSTEMS, OR LOSS OF DOCUMENTATION, WHETHER BASED ON BREACH OF CONTRACT, TORT (INCLUDING NEGLIGENCE), PRODUCT LIABILITY, OR OTHERWISE, IN CONNECTION WITH THE USE OF THE PRODUCT, EVEN IF HIKVISION HAS BEEN ADVISED OF THE POSSIBILITY OF SUCH DAMAGES OR LOSS. YOU ACKNOWLEDGE THAT THE NATURE OF INTERNET PROVIDES FOR INHERENT SECURITY RISKS, AND HIKVISION SHALL NOT TAKE ANY RESPONSIBILITY FOR ABNORMAL OPERATIONS, PRIVACY LEAKAGE OR OTHER DAMAGES RESULTING FROM CYBER-ATTACK, HACKER ATTACKS, VIRUS INSPECTION, OR OTHER INTERNET SECURITY RISKS; HOWEVER, HIKVISION WILL PROVIDE TIMELY TECHNICAL SUPPORT IF REQUIRED. YOU AGREE TO USE THIS PRODUCT IN COMPLIANCE WITH ALL APPLICABLE LAWS, AND YOU ARE SOLELY RESPONSIBLE FOR ENSURING THAT YOUR USE CONFORMS TO THE APPLICABLE LAW. ESPECIALLY, YOU ARE

RESPONSIBLE, FOR USING THIS PRODUCT IN A MANNER THAT DOES NOT INFRINGE ON THE RIGHTS OF THIRD PARTIES, INCLUDING WITHOUT LIMITATION, RIGHTS OF PUBLICITY, INTELLECTUAL PROPERTY RIGHTS, OR DATA PROTECTION AND OTHER PRIVACY RIGHTS. YOU SHALL NOT USE THIS PRODUCT FOR ANY PROHIBITED END-USES, INCLUDING THE DEVELOPMENT OR PRODUCTION OF WEAPONS OF MASS DESTRUCTION, THE DEVELOPMENT OR PRODUCTION OF CHEMICAL OR BIOLOGICAL WEAPONS, ANY ACTIVITIES IN THE CONTEXT RELATED TO ANY NUCLEAR EXPLOSIVE OR UNSAFE NUCLEAR FUEL CYCLE, OR IN SUPPORT OF HUMAN RIGHTS ABUSES. IN THE EVENT OF ANY CONFLICTS BETWEEN THIS MANUAL AND THE APPLICABLE LAW, THE LATER PREVAILS.

This product and – if applicable – the supplied accessories too are marked with “CE” and comply therefore with the applicable harmonized European standards listed under the RE Directive 2014/53/EU, the EMC Directive 2014/30/EU, the RoHS Directive 2011/65/EU. 2012/19/EU (WEEE directive): Products marked with this symbol cannot be disposed of as unsorted municipal waste in the European Union. For proper recycling, return this product to your local supplier upon the purchase of equivalent new equipment, or dispose of it at designated collection points. For more information see: www.recyclethis.info 2006/66/EC (battery directive): This product contains a battery that cannot be disposed of as unsorted municipal waste in the European Union. See the product documentation for specific battery information. The battery is marked with this symbol, which may include lettering to indicate cadmium (Cd), lead (Pb), or mercury (Hg). For proper recycling, return the battery to your supplier or to a designated collection point. For more information see: www.recyclethis.info

BATTERY CAUTION

- replacement of a battery with an incorrect type that can defeat a safeguard (for example, in the case of some lithium battery types);
- disposal of a battery into fire or a hot oven, or mechanically crushing or cutting of a battery, that can result in an explosion;
- leaving a battery in an extremely high temperature surrounding environment that can result in an explosion or the leakage of flammable liquid or gas; and
- a battery subjected to the extremely low air pressure that may result in an explosion or the leakage of flammable liquid or gas
- Chemical burning danger Do not swallow the battery.
- Keep new and used batteries away from the children.
- If you think batteries might have been swallowed or placed inside any part of the body, seek immediate medical attention.
- Risk of explosion if battery is replaced by an incorrect type.
- Replacement of a battery with an incorrect type can defeat a safeguard.
- Dispose of used batteries according to the instructions and local regulations.
- If the battery compartment does not close securely, stop using the product and keep it away from children.
- + identifies the positive terminal(s) of equipment that is used with, or generates direct current. – identifies the negative terminal(s) of equipment which is used with, or generates direct current.

INSTALLATION CAUTION

The additional force shall be equal to three times the weight of the equipment but not less than 50N. The equipment and its associated mounting means shall remain secure during the installation. After the installation, the equipment, including any associated mounting plate, shall not be damaged.

Documents / Resources



[HIKVISION DS-PDTPH-E-WB Wireless Temperature Detector](#) [pdf] User Guide
D2100001, 2ADTD-D2100001, 2ADTDD2100001, DS-PDTPH-E-WB Wireless Temperature Detector, Wireless Temperature Detector

References

- [🌐 HOME](#)
- [🌐 Hikvision US | The world's largest video surveillance manufacturer |](#)