



HIKVISION DS-PDTPH-E-WA Wireless Temperature Detector User Guide

[Home](#) » [Hikvision](#) » HIKVISION DS-PDTPH-E-WA Wireless Temperature Detector User Guide 

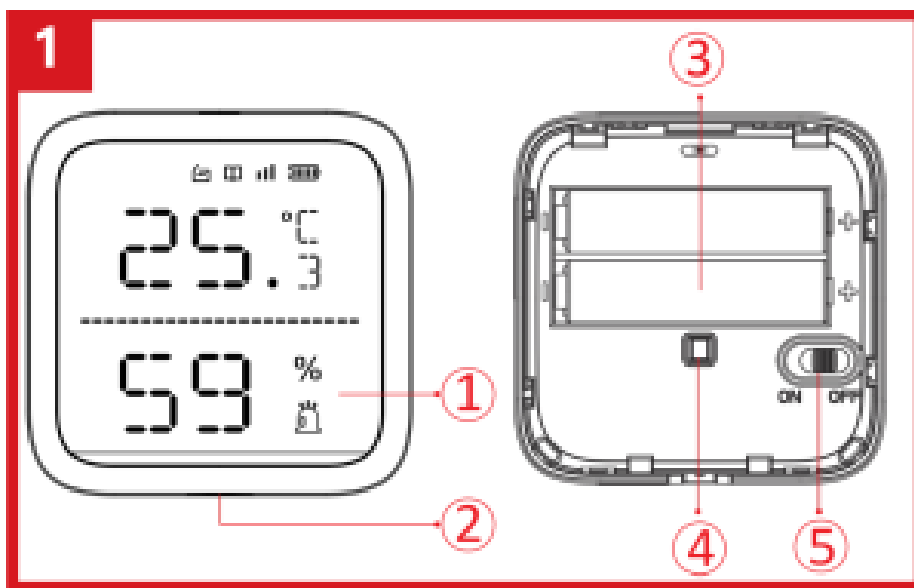
HIKVISION DS-PDTPH-E-WA Wireless Temperature Detector



Contents

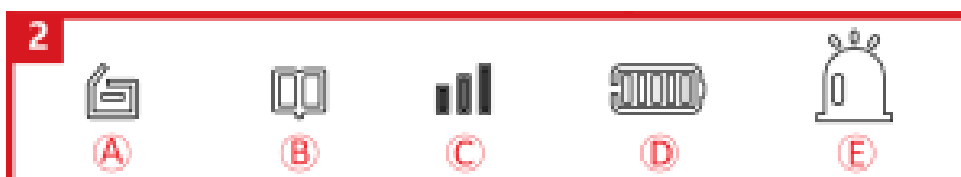
- 1 APPEARANCE
- 2 INDICATION
- 3 ENROLLMENT
- 4 INSTALLATION
- 5 APPLICATION
- 6 User Manual
- 7 Specification
- 8 About this Manual
- 9 Disclaimer
- 10 Documents / Resources
- 11 Related Posts

APPEARANCE



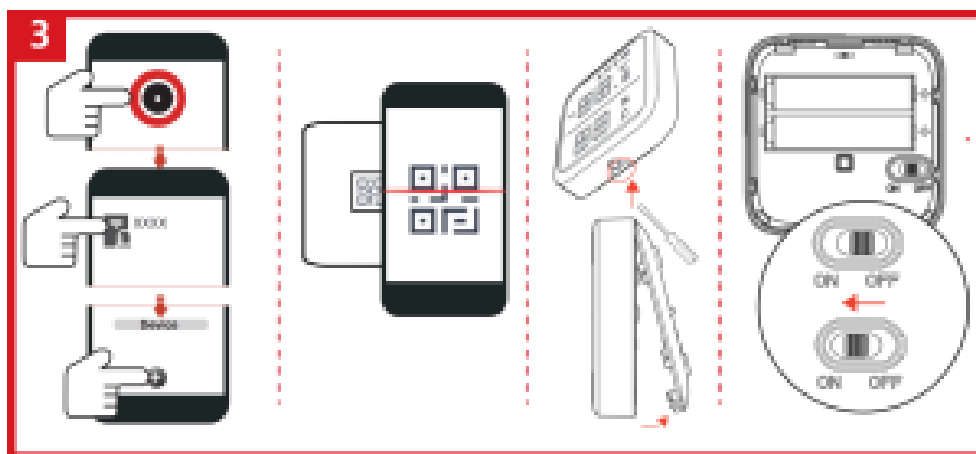
- 1. Screen
- 2. Probe Interface
- 3. Battery
- 4. Tamper Button
- 5. Power Switch

INDICATION



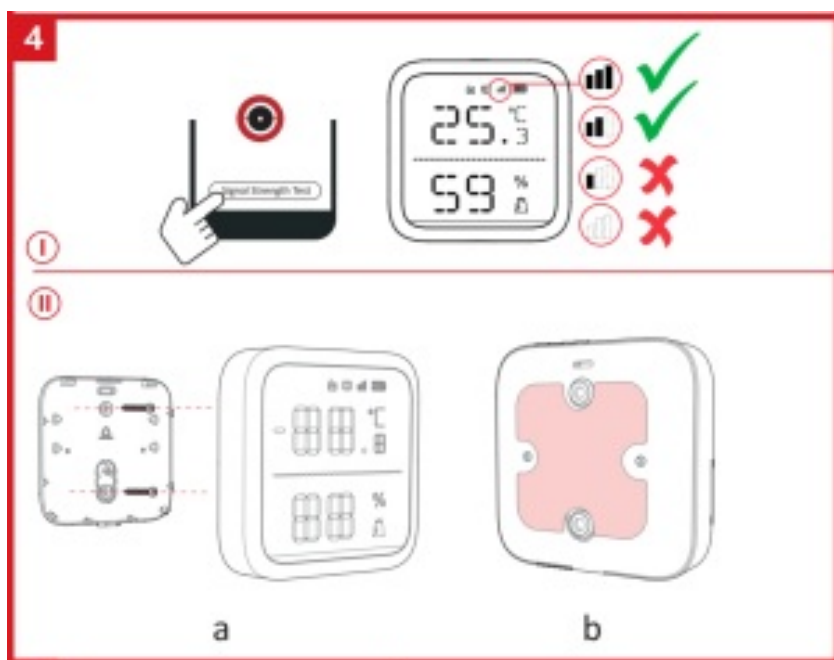
- A. Tamper Alarm
- B. Enrollment
- C. Signal Strength
- D. Battery Level
- E. Temperature Alarm

ENROLLMENT



INSTALLATION

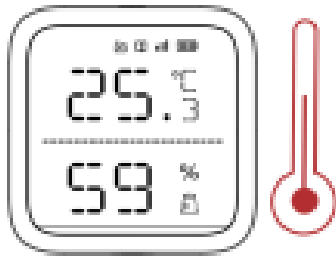
- I. Check signal strength.
- II. Install the detector.
 - a. Mount with screws.
 - b. Mount with sponge tape.



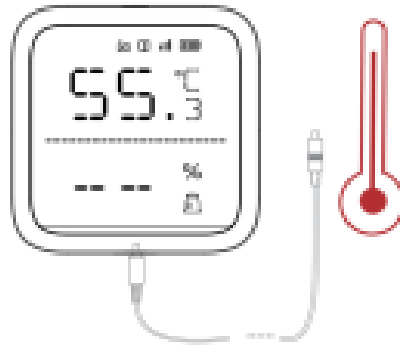
APPLICATION

1. Standalone Work
2. Work with Probe

Note: The humidity detection will be disabled when using probe.



①



②

User Manual



Specification

Detection method	Temperature sensor
Detection range	-10 °C to 55 °C (standalone) -35 °C to 99 °C (with probe)
Tamper protection	Front, rear
Indicator	On screen display
Transmission frequency	915 MHz
Battery type	AAA × 2
Typical voltage	3V
Standard battery life	2 Years
Operation temperature	-10 °C to 55 °C (14 °F to 131 °F)
Storage temperature	-20 °C to 60 °C (-4 °F to 140 °F)
Operation humidity	10% to 90%
Dimension(W x H x D)	62.6mm × 62.6mm × 18mm
Weight	73.5 g

©2021 Hangzhou Hikvision Digital Technology Co., Ltd. All rights reserved.

About this Manual

The Manual includes instructions for using and managing the Product. Pictures, charts, images and all other information hereinafter are for description and explanation only. The information contained in the Manual is subject to change, without notice, due to firmware updates or other reasons. Please find the latest version of this Manual at the Hikvision website (<https://www.hikvision.com/>).

Please use this Manual with the guidance and assistance of professionals trained in supporting the Product.

HIKVISION and other Hikvision's trademarks and logos are the properties of Hikvision in various jurisdictions. Other trademarks and logos mentioned are the properties of their respective owners.

Disclaimer

TO THE MAXIMUM EXTENT PERMITTED BY APPLICABLE LAW, THIS MANUAL AND THE PRODUCT DESCRIBED, WITH ITS HARDWARE, SOFTWARE AND FIRMWARE, ARE PROVIDED "AS IS" AND "WITH ALL FAULTS AND ERRORS". HIKVISION MAKES NO WARRANTIES, EXPRESS OR IMPLIED, INCLUDING WITHOUT LIMITATION, MERCHANTABILITY, SATISFACTORY QUALITY, OR FITNESS FOR A PARTICULAR PURPOSE. THE USE OF THE PRODUCT BY YOU IS AT YOUR OWN RISK. IN NO EVENT WILL HIKVISION BE LIABLE TO YOU FOR ANY SPECIAL, CONSEQUENTIAL, INCIDENTAL, OR INDIRECT DAMAGES, INCLUDING, AMONG OTHERS, DAMAGES FOR LOSS OF BUSINESS PROFITS, BUSINESS INTERRUPTION, OR LOSS OF DATA, CORRUPTION OF SYSTEMS, OR LOSS OF DOCUMENTATION, WHETHER BASED ON BREACH OF CONTRACT, TORT (INCLUDING NEGLIGENCE), PRODUCT LIABILITY, OR OTHERWISE, IN CONNECTION

WITH THE USE OF THE PRODUCT, EVEN IF HIKVISION HAS BEEN ADVISED OF THE POSSIBILITY OF SUCH DAMAGES OR LOSS. YOU ACKNOWLEDGE THAT THE NATURE OF THE INTERNET PROVIDES FOR INHERENT SECURITY RISKS, AND HIKVISION SHALL NOT TAKE ANY RESPONSIBILITIES FOR ABNORMAL OPERATION, PRIVACY LEAKAGE OR OTHER DAMAGES RESULTING FROM CYBER-ATTACK, HACKER ATTACK, VIRUS INFECTION, OR OTHER INTERNET SECURITY RISKS; HOWEVER, HIKVISION WILL PROVIDE TIMELY TECHNICAL SUPPORT IF REQUIRED. YOU AGREE TO USE THIS PRODUCT IN COMPLIANCE WITH ALL APPLICABLE LAWS, AND YOU ARE SOLELY RESPONSIBLE FOR ENSURING THAT YOUR USE CONFORMS TO THE APPLICABLE LAW. ESPECIALLY, YOU ARE RESPONSIBLE, FOR USING THIS PRODUCT IN A MANNER THAT DOES NOT INFRINGE ON THE RIGHTS OF THIRD PARTIES, INCLUDING WITHOUT LIMITATION, RIGHTS OF PUBLICITY, INTELLECTUAL PROPERTY RIGHTS, OR DATA PROTECTION AND OTHER PRIVACY RIGHTS. YOU SHALL NOT USE THIS PRODUCT FOR ANY PROHIBITED END-USES, INCLUDING THE DEVELOPMENT OR PRODUCTION OF WEAPONS OF MASS DESTRUCTION, THE DEVELOPMENT OR PRODUCTION OF CHEMICAL OR BIOLOGICAL WEAPONS, ANY ACTIVITIES IN THE CONTEXT RELATED TO ANY NUCLEAR EXPLOSIVE OR UNSAFE NUCLEAR FUEL-CYCLE, OR IN SUPPORT OF HUMAN RIGHTS ABUSES.

IN THE EVENT OF ANY CONFLICTS BETWEEN THIS MANUAL AND THE APPLICABLE LAW, THE LATER PREVAILS.

	This product and – if applicable – the supplied accessories too are marked with “CE” and comply therefore with the applicable harmonized European standards listed under the RE Directive 2014/53/EU, the EMC Directive 2014/30/EU, the RoHS Directive 2011/65/EU.
	2012/19/EU (WEEE directive): Products marked with this symbol cannot be disposed of as unsorted municipal waste in the European Union. For proper recycling, return this product to your local supplier upon the purchase of equivalent new equipment, or dispose of it at designated collection points. For more information see: www.recyclethis.info
	2006/66/EC (battery directive): This product contains a battery that cannot be disposed of as unsorted municipal waste in the European Union. See the product documentation for specific battery information. The battery is marked with this symbol, which may include lettering to indicate cadmium (Cd), lead (Pb), or mercury (Hg). For proper recycling, return the battery to your supplier or to a designated collection point. For more information see: www.recyclethis.info


FCC Please take attention that changes or modification not expressly approved by the party responsible for compliance could void the user’s authority to operate the equipment.

This device complies with Part 15 of the FCC Rules. Operation is subject to the following two conditions:

- (1) This device may not cause harmful interference, and
- (2) This device must accept any interference received, including interference that may cause undesired operation.

This equipment complies with FCC radiation exposure limits set forth for an uncontrolled environment. This equipment should be installed and operated with minimum distance 20cm between the radiator & your body.

CAUTION

1.  Do not ingest battery, Chemical Burn Hazard
2. Keep new and used batteries away from the children.
3. If the battery compartment does not close securely, stop using the product and keep it away from children.
4. If you think batteries might have been swallowed or placed inside any part of the body, seek immediate medical attention.
5. Risk of fire or explosion if the battery is replaced by an incorrect type.
6. Improper replacement of the battery with an incorrect type may defeat a safeguard (for example, in the case of some lithium battery types).
7. Do not dispose of the battery into fire or a hot oven, or mechanically crush or cut the battery, which may result

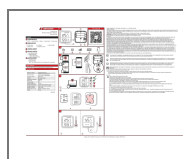
in an explosion.

8. Do not leave the battery in an extremely high temperature surrounding environment, which may result in an explosion or the leakage of flammable liquid or gas.
9. Do not subject the battery to extremely low air pressure, which may result in an explosion or the leakage of flammable liquid or gas.
10. Dispose of used batteries according to the instructions
11. The equipment is not suitable for use in locations where children are likely to be present.
12. + identifies the positive terminal(s) of equipment which is used with, or generates direct current. – identifies the negative terminal(s) of equipment which is used with, or generates direct current
13. The additional force shall be equal to three times the weight of the equipment but not less than 50N. The equipment and its associated mounting means shall remain secure during the installation. After the installation, the equipment, including any associated mounting plate, shall not be damaged.

Hangzhou Hikvision Digital Technology CO., Ltd. No.555 Qianmo Road, Binjiang District, Hangzhou 310052, China



Documents / Resources



[HIKVISION DS-PDTPH-E-WA Wireless Temperature Detector](#) [pdf] User Guide
D2100003, 2ADTD-D2100003, 2ADTDD2100003, DS-PDTPH-E-WA, Wireless Temperature Detector